

Registration, classes delayed by snow

KENTUCKY Kernel

an independent student newspaper

Newspaper/Microtext

JAN 11 1977

University of Kentucky
Library

University of Kentucky
Lexington, Kentucky

Vol. LXVIII, Number 84
Monday, January 10, 1977

Controlled madness

Drop-Add procedure begins Wednesday

By THOMAS CLARK
Kernel Reporter

Yes Virginia, there is a method to the madness of Drop-Add.

Although the prevailing attitude on campus is that Drop-Add is still a royal bear, the facts are that George Dexter is receiving fewer complaints than he did four or five years ago. Dexter, advising conferences and registration associate registrar, believes that it is because more and more people are learning how to use advance registration.

"We are now able to fill approximately 96 per cent of the student's class requests," said Dexter. "They have gotten into the habit of advance registration and so very few need to go through drop-add."

For those who do need to use it (like those who requested non-existent courses this semester)

things have been simplified through the centralization of drop-add that occurs Wednesday, Jan. 12 in Memorial Coliseum.

The centralized system is fairly simple. It usually lasts about 10 minutes and rarely will it take more than an hour. The procedure is as follows:

1. Students should obtain a drop-add slip from his or her college (Arts and Sciences, etc.).
2. Students should report to the Coliseum at the proper time that their letter of the alphabet will be accommodated. A student's change will not be processed until the proper time.

3. If the desired class is open, students should then pick up a class card at the department table.

4. Students should then return the class card to his or her college.

That's the method to the madness. Wednesday is the only day drop-add is centralized. After that the

student must drop and add classes at his or her respective college. This process runs until Jan. 18.

Students who didn't advance register go through late registration. This program begins at 8:30 a.m. Thursday on the Patterson Office Tower Mezzanine. The students receive their directions, go to their departments for class registration and then back to the Mezzanine.

Dexter cautioned students about checking to make sure that their class additions have been processed. Class roles are given to the teachers several times during the semester and students should check to make sure they are on them. The corrections should be made early, rather than at the end of the semester.

If you're still in doubt about the system, take two Alka-Seltzers and call George Dexter, Administration Annex-Room 110, 257-1966.

Corrected registration schedule

Registration, Drop-Add and classes have been delayed by inclement weather. Below is the corrected schedule for these activities.

TUESDAY, JAN. 11

For new students who are registering late, there will be an advising conference at 7:45 a.m. in Classroom Building 118.

Registration:
1:00 A-CHE 3:30 P-SM
1:30 CHF-F 3:30 SN-Z
2:00 G-KH 4:00-5:00 Misc.
2:30 KI-O

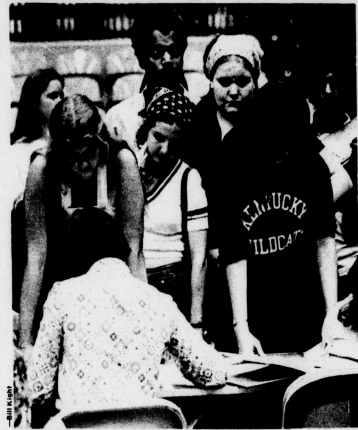
WEDNESDAY, JAN. 12

Centralized Drop-Add for advance registered students only.

10:00 DJ-F 1:00 RJ-SM
10:30 G-HEN 1:30 SN-U
11:00 HEO-KH 2:00 V-Z
12:00 MC-O 3:00 BM-CHE
12:30 P-RI 3:30 CHF-DI

THURSDAY, JAN. 13

Late registration for returning students. Classes begin.



Format changes mark Drop-Add history

By JIM McNAIR
Kernel Reporter

Centralized drop-add doesn't go back very far. Specifically, it first appeared in the schedule of classes calendar in the fall of 1973. Before that, drop-add procedures guided clambering students around campus not unlike the way Virgil guided Dante through Hell.

Jack Delap, director of records and registration for the College of Arts and Sciences, and Dr. Ben Black, assistant dean of that college, were the original experimenters with centralized drop-add until it was activated in 1972.

"The difference was a mechanical thing really," Delap recollected. "In the old days, the drop-add slip was the same. What a person had to do was get the paper from his advisor and have him sign it, then go to the department where the course was taught, notify them of the drop, then process it through his dean's office." Delap explained the Arts and Sciences situation and how it confronted the problem amidst uncertainty. "The thing that triggered the awareness of the need for centralized drop-add was the Patterson Office Tower. After it was erected, when masses of people rode the elevators up to the history department on the 17th floor or geography

on the 14th to get signatures, the building ceased to function."

Arts and Sciences brought centralized drop-add to life in January 1972 with a three-day operation in Buell Armory. "The first day was a bit trying," said Delap, "but by the afternoon of the third day, waiting times were minimized. For handling such a big crowd, we were moving along. The dean was there and someone acted as an advisor to sign routine changes."

Just as it was the first college to use the centralized drop-add, Arts and Sciences also first proposed a University level drop-add. Knowing that the armory was too small for the stupendous setting, A &

S decided that if late registration could be done for the entire student body in one arena, so too, could a centralized drop-add. The University took the bait and got hooked.

"The crux of the matter was that there are some 25,000 drop-add actions altogether," said Delap, "so a lot of people had to get involved and cooperate. We would have it on one day, Tuesday, and if students missed it, they had to do the pillar to post thing."

Dr. Black reflected profound satisfaction with the new procedure. Of the old one he said disparagingly, "It was a nuisance."



Resignation to registration

Registration is overwhelming, frustrating, intimidating — and necessary. Here, a student takes a break, surveying the furor from her station in the stands.

Students not alone in bearing Drop - Add bureaucracy

By BONNIE HARRELL
Kernel Reporter

The next time you fill out a schedule card, or have a hard time going through drop-add, just think you may have the easy end of the deal.

The university end is a complex and time-consuming process that involves much of the administration and academic staff, according to Robert Larson, assistant dean for

research and data management. The research and data management department is the coordinating force behind the various activities needed to prepare for registration and drop-add.

"The first thing we do is to establish a schedule of courses. Each academic department makes up material for the schedule, after finding out how many new freshmen are expected to come in the next

semester. Then they estimate how many sections of courses they're going to need," Larson said. "The college of Arts and Sciences particularly has problems because they teach about ninety percent of the courses offered by the University."

The next step involves the student, who selects the courses he wants and has the card approved by the dean of his college. The card then goes to the data processing center for the first run-through, and keypunch

operators figure the "dean's count" that shows how many requests have been made for all courses. After the colleges make adjustments between the number of courses and the number of students, the requests are run through the computers a second time and scheduled according to certain priorities.

"Handicapped students are given first priority because they know what buildings are accessible to

them," Larson said. Athletes and students with the highest grade point average (GPA) are processed next. Freshmen registering for their first semester are given priority according to their high school GPA.

The computers are also used for the drop-add process. "One-third of the students we register go through drop-add. Drop-add cards are processed about two weeks after drop-add, and then the final records

are made and class rolls sent out." Larson's office also coordinates the classes offered and the available classroom space. "If a building was designed for a particular department, then that department has priority," Larson said. It's difficult to use space efficiently, especially when there are only about 200 classrooms on the entire campus. The main problem is that people all try to schedule their classes at prime times, from 9 a.m. to 2 p.m."

Choose quality classes, dean urges students

By PATTY ROMERO
Kernel Reporter

During registration, a student may feel that organized chaos and confusion have been plotted against him. But then he discovers drop-add. The most wonderful invention since thermal underwear. The chaos is not over. It has just begun. Now it is time for secretaries, professors, and deans to examine a schedule for the oncoming students.

The drop-add procedure is absolutely necessary," said Warren Walton, assistant dean of engineering. "Though it is a hassle to change schedule cards, it still is better for the students. The problem we have with this procedure is that this holds up class space for the students who really want to be in," added Walton.

In a course such as surveying, enrollment is highly subscribed. Only 25 students are allowed in this class due to the limited amount of equipment. When students enroll in this class and drop out, the students waiting for this class do not get in unless they talk to the professor.

Many students do not realize this and miss the course for the semester.

"It's not difficult to go through drop-add in engineering," said Vickie Wittwer, freshman engineering major. "They have a tentative schedule. Usually they do it to lighten the load. The drop-add procedures mostly involve changing sections."

The biggest problem with drop-add for the College of Engineering is that almost every student tries drop-add. "Most are swapping classes. We urge the students to choose quality. It would be better for them in the future," said Walton. "It disturbs me to see students signing up for an excess number of classes when they know they can't handle it. I think this is when drop-add is abused."

A W is given when a student drops a course passing. On the other hand, when a student is failing and drops the course he receives an E. No grade is given if the student has never been to class. The administration takes it for granted that something went wrong with the schedule.

CACTUS - CACTI
Exotic Cactus Dishes A Specialty




854 E. High St.
266-8414

ORIENTAL FOODS & GIFTS
東洋食品
276-2013
357 Southland Dr.
Lexington, Ky.
40503

Have a PAP test.
American Cancer Society.

"Every good cause needs some good Advertising."

If your club or organization is planning something this semester which needs participation and input from the UK community, the Kernel can be a big help. We have special low rates for student groups, too. Call today for more information. Cindy Cash, 258-4646.



Have we got a spring semester for you!

The Chevy Store will be going **ALL OUT** in 1977. Why not be a part of it?

266-4441 In the heart of Chevy Chase

WELCOME BACK!



Our Worthy Menu

- 1/2 lb. Sirloin Strip Steak Dinner 2.39
- 6 oz. Top Butt Sirloin Steak Dinner 2.19
- 1/2 lb. Chopped Sirloin Steak Dinner .. 1.89
- 3/4 lb. T-Bone Steak Dinner 3.29

(All dinners include baked potato, fresh garden salad and hot buttered roll.)

- 1/4 lb. Chopped Steak Sandwich with Steak Fried Potatoes 99¢

DAILY LUNCHEON SPECIALS
Luncheons served Monday thru Saturday to 3 p.m.

- 6 oz. Chopped Sirloin Lunch 1.29
- 1/4 lb. Rib Eye Steak Lunch 1.29

(Luncheons include steak, fried potatoes, fresh garden salad and hot buttered roll.)

- York Junior Chef Salad Delight 99¢
- Large York Chef Salad Delight 1.49

(Salads include crisp garden lettuce, Jutienne ham, turkey, cheese, egg, tomato and choice of dressing.)

FAYETTE MALL
Sun-Thurs. 11am-9:30pm Fri & Sat 11am-10pm

FREE DRINK WITH UK I.D. SUNDAY

Supplement to Spring Schedule 1977

INFORMATION AND INSTRUCTIONS

This Supplement must be used in conjunction with the regular schedule since the days when classes meet, times, and rooms are listed only for those courses (or sections) which have been added or where there has been a change in the original information.

The format of this Supplement is the same as the regular schedule, i.e., the colleges are listed alphabetically.

THESE ARE OPEN COURSES ONLY

NOTE: Advance registration dates for Summer and Fall 1977 are April 11-20, 1977. Advance registration is required for all continuing students.


EXPERIMENTAL EDUCATION		PUBLIC ADMINISTRATION (GRADUATE SCHOOL)		COLLEGE OF AGRICULTURE	
PKR 300-1		PA 621-91 PFA 627 PA 623-91	PFA 629 EIM 722	EIM 738-2 *PFS 553	PS 584
		PFS 553 Urban Govt & Pol	3 MWF 10-10:50		CS 238 Lpna
AGRICULTURAL ECONOMICS					
ARC 301-1 ARC 313 FARC 441	ARC 640 ARC 768	ARC 502 ARC 535			
FARC 302-1 FARC 311 ARC 480	ARC 640 ARC 769	FARC 516 ARC 790			
ARC 302-2 ARC 312 ARC 501	ARC 641 ARC 780	ARC 531 ARC 606			
ARC 312					
AGRICULTURAL ENGINEERING					
FARN 212-2 AEN 212-3 AEN 431					
AGRONOMY					
AGR 206-3 AGR 361-3 AGR 401	FAGR 560 AGR 638	AGR 735 AGR 770-1			
AGR 360 AGR 366 AGR 510-2	FAGR 566 AGR 681	AGR 764 AGR 770-2			
AGR 361-1 FAGR 367-2 FAGR 550	AGR 599 AGR 721	AGR 769 AGR 799			
AGR 361-2 AGR 367-3					
*FAGR 556 Seed Technology	3 M 3-4:50			AGSM 8-11 Theory	
	TTh 10-10:50			AGSM 9-108	
ANIMAL SCIENCES					
FASC 109-3 FASC 361-2 FASC 395	ASC 470-2 ASC 564	FASC 687 ASC 782			
FASC 301 FASC 362 ASC 404	ASC 532 ASC 640	ASC 771 ASC 790			
ASC 306 FASC 364 ASC 408	ASC 534 ASC 684	ASC 780 ASC 791			
FASC 321 FASC 378 ASC 430	ASC 538 ASC 684	ASC 781 FASC 792			
FASC 360 ASC 380 ASC 442					
COOPERATIVE EXTENSION					
CEX 501					
ENTOMOLOGY					
ENT 397 ENT 626 ENT 680					
ENT 401 ENT 635 ENT 684					
FORESTRY					
FOR 305 FOR 350 FOR 410-2	FOR 430 FFOR 440-1	FOR 512 FOR 601			
*FFOR 310-1 *FFOR 405 FFOR 412	FOR 435 FFOR 440-2	FOR 599 FOR 749			
*FOR 310-2					
*FFOR 310-1 Forest Photogrammetry	2 M 12-12:50	TPC 113 L4a			
*FOR 310-2 Forest Photogrammetry	2 M 12-12:50	TPC 109			
*FFOR 405 Mecha Physics of Wood	3 TBA 3-4:50	TPC 113 L4a			
		TPC 109			
		TPC 113 Tamg			
GENERAL AGRICULTURE					
GEN 102-2 GEN 106-1					
HORTICULTURE AND LANDSCAPE ARCHITECTURE					
HOR 329-3 HROK 402-1 HOR 512-1	HOR 524-1 HOR 570	HOR 748 HOR 790			
HOR 332 HROK 510-2 HOK 512-2	HOR 524-2 HOR 736	HOR 770			
Landscpe Architecture					
FLA 332 LA 441	LA 490 FLA 575	FLA 576			
PLANT PATHOLOGY					
PFA 401 PFA 410-2 PFA 640	PFA 769 PFA 770	PFA 784 PFA 794			
PFA 410-1 PFA 503 PFA 768					
SOCIOLOGY					
SOC 515 SOC 534	SOC 565 SOC 773	POC 790 SOC 797			
VETERINARY SCIENCE					
VS 330 PVS 395 PVS 769	PVS 781 PVS 786	PVS 791 PVS 793			
PVS 331 PVS 768 PVS 770	PVS 785				

*Added course
*Changed course
**Fire or leave vacancies


Keith
of
Timothy hairdressers
offering the latest in precision cuts and dimension coloring, is now open in the Lexington Center. 233-4442
9.5 Mon.-Fri. 9-6:30 Thur. 9-2 Sat.



If a little birdie tells you something, let us in on it too.
KERNEL News: 257-3244



J&H Army Surplus
109 N. Broadway
"We'll be looking for You"
Field Jackets
P-coats
Winter Parkas
fatigues & jeans



COLLEGE OF ALLIED HEALTH PROFESSIONS

ALLIED HEALTH EDUCATION AND RESEARCH

ARE 500 ARE 690 ARE 856 ARE 861 ARE 863 ARE 866 ARE 870
ARE 595 ARE 841 ARE 860 ARE 862 ARE 865 ARE 869 ARE 871
ARE 876

*ARE 841 Rich Care Spec Clubhp 3 TRA Connally, Clark

CLINICAL NUTRITION

CNU 500-1 CNU 502-2 CNU 602 CNU 702 CNU 748 CNU 781 CNU 782

CLINICAL PASTORAL CONSULTING

CPC 501

COMMUNITY HEALTH

CH 430 CH 481 CH 501 CH 511

DENTAL HYGIENE

DHM 523 DHM 527 DHM 537 DHM 552

HEALTH RADIATION SCIENCES

HRS 690 HRS 695 HRS 710 HRS 715 HRS 721

MEDICAL TECHNOLOGY

MT 850 MT 853-2 MT 845 MT 856 MT 858 MT 860 *MT 866
MT 853-1 MT 855 MT 853 MT 857

*MT 866 Clin Bacteriology Lab 3 TRV 2-4:50 NRS 124 Collins

PHYSICAL THERAPY

PT 608 PT 618 PT 636 PT 656 PT 668 PT 698

COLLEGE OF ARCHITECTURE

ARC 101 ARC 202 ARC 820 *ARC 840-2 ARC 961 *ARC 964-5 *ARC 964-12
*ARC 100-1 ARC 221 ARC 821 *ARC 910 *ARC 962 *ARC 964-6 *ARC 964-14
*ARC 102-2 ARC 231 ARC 833 ARC 911 *ARC 964-7 *ARC 964-13
*ARC 102-3 ARC 810 ARC 833 ARC 912 *ARC 964-8 *ARC 964-14
*ARC 102-4 ARC 811 ARC 833 ARC 914 *ARC 964-3 *ARC 964-10 *ARC 964-18
*ARC 121 *ARC 812 ARC 833 ARC 950 *ARC 964-4 *ARC 964-11 *ARC 964-19
*ARC 201 ARC 813 ARC 840-1
*ARC 964-4 Adv Spec Prob ARC II 3 Th 11-12:50 Pence 113 Groves
& 1 hr by appt
*ARC 964-11 Adv Spec Prob ARC II 3 T 2-4:50 Pence Shop Wejclik
Th 3-3:50 Pence Shop Wejclik
*ARC 964-12 Adv Spec Prob ARC II 3 T 2-4:50 Pence Shop Wejclik
Th 3-3:50 Pence Shop Wejclik
*ARC 964-16 Adv Spec Prob ARC II 3 T 2-4:50 Pence 314 Carpenter
*ARC 100-16 Adv Spec Prob ARC II 3 Th 3-5:30 ME 102 Zimels
*ARC 964-18 Adv Spec Prob ARC II 3 T 6:30-9:30 Pence 003 Buccanove
*ARC 964-19 Adv Spec Prob ARC II 3 W 12-12:50 Pence 209 Jullian
& 1 hr by appt

COLLEGE OF ARTS AND SCIENCES

AAS 102
AEROSPACE STUDIES
AS 111-1 AS 113-3 AS 211-1 AS 212-2 AS 213-1 AS 213-2 AS 242-2
AS 112-1 AS 112-4 AS 212-1 AS 212-3 AS 212-2 AS 242-1 AS 395
AS 112-2 AS 112-5

ANTHROPOLOGY

ANT 120-4 ANT 120-15 ANT 121-10 ANT 253 *ANT 519 *ANT 590 *ANT 721
ANT 120-5 ANT 120-16 ANT 121-11 ANT 332 ANT 525 *ANT 580-91 ANT 725
ANT 120-7 ANT 121-3 ANT 121-12 ANT 383 ANT 526 *ANT 581 ANT 720
ANT 120-8 ANT 121-4 ANT 121-14 ANT 399 ANT 529 ANT 582 ANT 787
ANT 120-10 ANT 121-7 ANT 121-15 ANT 430 ANT 528 ANT 585 ANT 786
ANT 120-11 ANT 121-6 ANT 121-16 ANT 438 ANT 541 *ANT 605 ANT 789
ANT 120-12 ANT 121-7 ANT 121-19 ANT 542 ANT 542 ANT 780
ANT 120-13 ANT 121-8 ANT 141 ANT 516 ANT 550 ANT 813 ANT 790
ANT 120-14 ANT 121-9 ANT 221 ANT 518-91 ANT 570 ANT 690

BIOLOGICAL SCIENCES

BIO 102 BIO 108-1 *BIO 203-5 BIO 476-2 BIO 570 BIO 707 BIO 795
BIO 103-1 BIO 109-2 BIO 203-6 BIO 515 BIO 596-2 BIO 716 BIO 796
BIO 104-2 BIO 109-3 BIO 203-7 BIO 521 BIO 596-3 BIO 718 BIO 797
BIO 104 BIO 109-4 BIO 203-8 *BIO 523-1 BIO 596-4 BIO 720 BIO 798
*BIO 105-6 BIO 109-5 BIO 203-9 BIO 524 BIO 617 BIO 725 BIO 796
BIO 106 BIO 109-6 BIO 240-1 *BIO 525 BIO 621 BIO 740 BIO 789
BIO 107-1 *BIO 109-7 BIO 261 *BIO 544-2 BIO 635 BIO 768 MB 748
BIO 107-2 BIO 109-8 BIO 310 *BIO 550 BIO 640 BIO 769 BIO 789
BIO 107-3 BIO 109-9 BIO 404 BIO 552 *BIO 680 BIO 770-2 BIO 786
BIO 107-5 BIO 202 BIO 476-1 BIO 557 BIO 670 BIO 771 BIO 789
BIO 108 BIO 203-4

CHEMISTRY

CHE 103 CHE 112-3 CHE 226-3 CHE 232-1 CHE 443 *CHE 590 CHE 776-1
CHE 106-3 CHE 112-5 CHE 226-3 *CHE 232-2 CHE 512 *CHE 633 CHE 776-2
CHE 108-3 CHE 112-3 CHE 226-3 CHE 232-3 CHE 513 CHE 645 *CHE 736-3
CHE 108-4 CHE 112-4 CHE 226-5 CHE 232-3 CHE 513 CHE 736-4
CHE 108-5 CHE 112-5 CHE 230 CHE 234 CHE 547 CHE 736 CHE 780
CHE 110-1 CHE 112-6 CHE 232-1 CHE 441 CHE 522 CHE 748 CHE 790
CHE 110-2 CHE 226-1 CHE 232-2 CHE 442 CHE 522 CHE 572

*CHE 776-4 Graduate Seminar 1 Th 8-8:50p CR 137 Corio

CLASSICAL LANGUAGES AND LITERATURES

CLA 107-1 CLA 152 CLA 230-4 CLA 261 CLA 512 CLA 542 CLA 603
CLA 108-2 CLA 202 CLA 235 CLA 302 CLA 530 CLA 580 *CLA 604
CLA 109-3 CLA 230-1 CLA 236 CLA 511 CLA 552 CLA 601 CLA 748
CLA 131-1 CLA 230-2 *CLA 525 CLA 511 CLA 541 CLA 602 CLA 790
CLA 131-2 CLA 230-3

*CLA 525 Intermediate Greek 3 MW 2-2:50 OT 108 Martin

COMPARATIVE LITERATURE

CLT 265 ENG 348 FR 361-1 FR 437 GER 301 SO 463 RPT 397
CLT 395 ENG 473 FR 261-2 FR 612 GER 306 RPT 261 *RPT 407
CLA 235 ENG 560 FR 304 FR 622 GER 511 RPT 263 RPT 412
CLA 236 *ENG 563 FR 305 FR 666 SO 440 RPT 316 RPT 521
CLA 261 ENG 566 FR 436

*RPT 407 Lit Soc Protect Sp Am 3 MW 11-11:50 CR 209 Sanns

COMPUTER SCIENCE

CS 221-1 CS 221-7 CS 396 CS 472-2 CS 540 CS 612 CS 688-1
CS 221-3 CS 221-8 CS 420 CS 472-3 CS 562 CS 650 CS 688-2
CS 221-5 CS 290-3 CS 421 CS 502 CS 570 CS 683 CS 768
CS 221-6 CS 310 CS 445 CS 538

DEVELOPMENTAL STUDIES

ENG 101-101 ENG 101-103 ENG 101-105 MA 108B-12 MA 108B-14 SP 181-19 SP 181-20
ENG 101-102 ENG 101-104 MA 108B-11 MA 108B-13

PATTERSON SCHOOL OF DIPLOMACY

DEP 748 DEP 769 DEP 777 DEP 795

PHYSICS

PHYS 101-1 ENG 100-6 ENG 100-30 ENG 252-2 ENG 356 ENG 431 *ENG 563
ENG 101-2 ENG 100-5 ENG 100-21 ENG 222-3 ENG 363 *ENG 586 ENG 588
ENG 101-3 ENG 100-8 ENG 100-22 ENG 251 ENG 364-1 ENG 439 ENG 578-1
ENG 101-4 ENG 100-9 ENG 100-24 ENG 252-1 ENG 364-2 ENG 440 ENG 578-2
ENG 101-5 ENG 100-7 ENG 101-1 ENG 252-2 ENG 365 ENG 451 ENG 581
ENG 101-6 ENG 100-6 ENG 101-16 ENG 251-1 ENG 364-1 ENG 453 ENG 581
ENG 101-7 ENG 100-8 ENG 101-91 ENG 261-4 *ENG 366-2 ENG 454 ENG 600
ENG 101-8 ENG 100-9 ENG 101-10 ENG 261-5 ENG 366-3 ENG 455-2 ENG 611
ENG 101-9 ENG 100-2 ENG 101-20 ENG 262-4 *ENG 380-1 ENG 473 *ENG 612
ENG 101-10 ENG 100-3 ENG 101-21 ENG 262-8 ENG 380-2 ENG 499 ENG 613
ENG 101-11 ENG 100-6 ENG 101-22 ENG 263-10 ENG 414-2 ENG 510 ENG 613
ENG 101-12 ENG 100-8 ENG 101-23 ENG 263-11 ENG 422 ENG 516 ENG 643
ENG 101-13 ENG 100-5 ENG 101-24 ENG 263-12 ENG 423-91 ENG 518 ENG 748
ENG 101-14 ENG 100-13 ENG 221-2 ENG 263-13 ENG 424 ENG 580 ENG 735
ENG 101-15 ENG 100-14 ENG 221-3 ENG 263-14 ENG 427 ENG 542 ENG 753
ENG 101-81 ENG 100-18 ENG 222-1 ENG 301 ENG 428 ENG 560 ENG 771
ENG 100-92

*ENG 101-12 Freshman Comp 3 TH 11:30-1:45 NVR 206 Staff
*ENG 455-2 The Nat Amer Novel 3 MW 1-1:50 HB 303 Staff
*ENG 625 Stud Mag Lit 1500-1600 3 TH 11:30-1:45 CH 431 Staff

FOREIGN LANGUAGE AND LITERATURE

FR 011-1 FR 111 FR 112-2 FR 121-1 *FR 202-6 FR 305 FRP 517
FR 011-2 FR 112 FRP 116-1 FR 121-2 *FR 203-1 FRP 395 FRP 612
*FR 101-6 FR 113 FR 116-2 FR 121-1 FRP 203-2 FR 407 FR 452
*FR 100-6 FR 114-1 FRP 117-1 FR 122-2 FR 261-1 FRP 412 FR 666
FR 100-91 FR 114-2 FR 117-2 FR 122-3 FR 261-2 *FR 436 FRP 768
FR 106 FR 113-1 FR 118 *FR 201-5 FR 304 FR 437

*Added course
*Changed section
*Five or less vacancies

SPRING SEMESTER CHECKLIST: HAVE YOU



PAID YOUR HEALTH FEE ?



RENEWED YOUR PARKING PERMIT IF YOU NEED TO ?



CONFIRMED YOUR SPRING SCHEDULE ?



PAID YOUR TUITION ?



BOUGHT A CALENDAR SO YOU CAN COUNT THE DAYS UNTIL SPRING BREAK ?



Copyright 1977-The Kroger Co. Quantity rights reserved. Items & prices good at Euclid Ave. Lexington Kroger Superstore Jan. 10 thru Jan. 16, 1977.

Make Kroger Your One-Stop College Shop For Great Food Buys!

Mini-Mizer COUPON SPECIAL
Frozen Totino's Pizza
13-oz. package 69¢
Limit 2 pkgs. with this coupon & \$10 purchase

Mini-Mizer COUPON SPECIAL
Country Oven Twin Pack Potato Chips
8-oz. Pack 39¢
Limit 2 packs with this coupon & \$10 purchase

Mini-Mizer COUPON SPECIAL
Refreshing Diet Rite or R.C. Cola
16-oz. bottles 78¢
Additional 8 Paks. .99¢ Plus Bottle Deposit

VALUABLE COUPON
FREE Pepsi
with the purchase of a Stacked Sandwich
(Ham, Roast Beef or Corned Beef ea. \$1.99)

VALUABLE COUPON
Fresh Mushrooms
1-lb. package 99¢
Limit 2 pkgs. with this coupon

College of Arts and Sciences - cont

FRANCIS LANGUAGE AND LITERATURE - CORE

#FR 101-4	Elementary French	3	MOV	1-1:50	CR 231	Staff
#FR 201-5	Intermediate French	3	TTh	12:30-1:45	CR 211	Staff
#FR 202-6	Intermediate French	3	MOV	2-2:50	CR 137	Staff

CONCORDANCE

GRD 151-1	GRD 152-3	GRD 153-91	GRD 532	GRD 540	GRD 655	GRD 748
GRD 151-2	GRD 152-4	GRD 153-92	GRD 533	GRD 541	GRD 656	GRD 749
GRD 151-3	GRD 152-5	GRD 153-93	GRD 534	GRD 542	GRD 657	GRD 750
GRD 151-4	GRD 152-6	GRD 153-94	GRD 535	GRD 543	GRD 658	GRD 751
GRD 151-5	GRD 152-7	GRD 153-95	GRD 536	GRD 544	GRD 659	GRD 752

COLOGY

GLY 144-1	GLY 144-2	GLY 214	GLY 395	GLY 511	GLY 654	GLY 748
GLY 144-3	GLY 144-4	GLY 215	GLY 396	GLY 512	GLY 655	GLY 749
GLY 144-5	GLY 210	GLY 380	GLY 510	GLY 650	GLY 740	GLY 750

#GLY 242-5	Elea Cology Engrs, Lec Lab	4	MOV	10-10:50	CR 208	Deanen Staff
			T	9-11:50	CR 207	Staff

GERMANIC LANGUAGES AND LITERATURES

GER 021-2	GER 121-6	GER 122-8	GER 202	GER 222-1	GER 396	GER 540
GER 121-1	GER 121-7	GER 122-9	GER 203	GER 222-2	GER 397	GER 541
GER 121-2	GER 121-8	GER 122-10	GER 204	GER 222-3	GER 398	GER 542
GER 121-3	GER 121-9	GER 122-11	GER 205	GER 222-4	GER 399	GER 543
GER 121-4	GER 121-10	GER 122-12	GER 206	GER 222-5	GER 400	GER 544

HISTORY

HIS 100-3	HIS 100-91	HIS 230-3	HIS 350	HIS 522	HIS 577	HIS 625
HIS 100-4	HIS 100-92	HIS 230-4	HIS 351	HIS 523	HIS 578	HIS 626
HIS 100-5	HIS 100-93	HIS 230-5	HIS 352	HIS 524	HIS 579	HIS 627
HIS 100-6	HIS 100-94	HIS 230-6	HIS 353	HIS 525	HIS 580	HIS 628
HIS 100-7	HIS 100-95	HIS 230-7	HIS 354	HIS 526	HIS 581	HIS 629
HIS 100-8	HIS 100-96	HIS 230-8	HIS 355	HIS 527	HIS 582	HIS 630

LATIN AMERICAN STUDIES

LAS 201	LAS 301	PSY 210	#PSY 211-2	#PSY 311-2	#PSY 311-91	#PSY 407
#LSP 407	Lit Soc Present Sp Jn					

MATHEMATICS

MA 108-2	MA 108-11	MA 113-20	MA 123-91	MA 261	MA 483	MA 651
MA 108-3	MA 108-12	MA 113-21	MA 123-92	MA 262	MA 484	MA 652
MA 108-4	MA 108-13	MA 113-22	MA 123-93	MA 263	MA 485	MA 653
MA 108-5	MA 108-14	MA 113-23	MA 123-94	MA 264	MA 486	MA 654
MA 108-6	MA 108-15	MA 113-24	MA 123-95	MA 265	MA 487	MA 655
MA 108-7	MA 108-16	MA 113-25	MA 123-96	MA 266	MA 488	MA 656

MIDDLE EAST CIVILIZATION

#ME 121	#ME 252	HIS 501	PRE 504	#O 131	#O 211	#O 444
#ME 383	HIS 230	HIS 538	PRE 505	#O 132	#O 212	#O 445
#ME 438	HIS 748	HIS 595	PRE 506	#O 133	#O 213	#O 446

MILITARY SCIENCE

MS 102-1	MS 102-4	MS 202-2	MS 202-9	MS 302-3	MS 342-1	MS 342-9
MS 102-2	MS 102-5	MS 202-3	MS 202-10	MS 302-4	MS 342-2	MS 343
MS 102-3	MS 102-6	MS 202-4	MS 202-11	MS 302-5	MS 342-3	

PHILOSOPHY

#PHI 100-10	#PHI 120-13	#PHI 240-1	#PHI 395	#PHI 518	#PHI 545	#PHI 715
#PHI 100-11	#PHI 120-14	#PHI 240-2	#PHI 396	#PHI 519	#PHI 546	#PHI 716
#PHI 100-12	#PHI 120-15	#PHI 240-3	#PHI 397	#PHI 520	#PHI 547	#PHI 717

PHYSICS AND ASTRONOMY

PHY 151	PHY 211-5	PHY 231-9	PHY 242-4	PHY 320	PHY 549	PHY 715
PHY 152	PHY 211-6	PHY 232-3	PHY 242-5	PHY 321	PHY 550	PHY 716
PHY 201-4	PHY 211-7	PHY 232-4	PHY 242-6	PHY 322	PHY 551	PHY 717

ASTRONOMY

AST 192-1	AST 192-2	AST 192-91	AST 391	AST 495
-----------	-----------	------------	---------	---------

POLITICAL SCIENCE

PS 131-2	PS 201-1	PS 250	PS 300-1	PS 556	PS 579	PS 750
PS 131-3	PS 201-2	PS 251-1	PS 300-2	PS 557	PS 580	PS 751
PS 131-4	PS 201-3	PS 251-2	PS 300-3	PS 558	PS 581	PS 752

AMERICAN GOVERNMENT

#PS 151-5	American Government	3	MOV	10-10:50	CR 208	Deanen Staff
#PS 553	Urban Govt & Politics	3	MOV	10-10:50	CR 210	Lynn

PSYCHOLOGY

PSY 100-4	PSY 300-1	PSY 330-12	PSY 505-2	#PSY 544-3	PSY 633	PSY 778
PSY 100-5	PSY 300-2	PSY 330-13	PSY 505-3	#PSY 544-4	PSY 634	PSY 779
PSY 100-6	PSY 300-3	PSY 330-14	PSY 505-4	#PSY 544-5	PSY 635	PSY 780
PSY 100-7	PSY 300-4	PSY 330-15	PSY 505-5	#PSY 544-6	PSY 636	PSY 781
PSY 100-8	PSY 300-5	PSY 330-16	PSY 505-6	#PSY 544-7	PSY 637	PSY 782
PSY 100-9	PSY 300-6	PSY 330-17	PSY 505-7	#PSY 544-8	PSY 638	PSY 783

BASIC PSYCHOLOGY II

#PSY 100-10	Basic Psychology II	3	TTh	11-11:50	CR 211	Welch
#PSY 100-11	Basic Psychology II	3	TTh	11-11:50	CR 212	Welch
#PSY 100-12	Basic Psychology II	3	TTh	11-11:50	CR 213	Welch

*Added course
#New or less vacancies
*See departmental listings for open sections

Take off your shoes.

Hit the deck in shorts and a tee shirt. Or your bikini if you want.

You're on a leisurely cruise to remote islands. With names like Martinique, Grenada, Guadeloupe. These are the ones you've heard of.

A big, beautiful sailing vessel glides from one breathtaking Caribbean jewel to another. And you're aboard, having the time of your life with an intimate group of lively, fun-loving people. Singles and couples, too. There's good food, "grog," and a few pleasant comforts...but there's little resemblance to a stay at a fancy hotel, and you'll be happy about that.

Spend six days exploring paradise and getting to know congenial people. There's no other vacation like it.

Your share from \$290. A new cruise is forming now. Write Cap'n Mike for your free adventure booklet in full color.

Windjammer Cruises.

Name: _____
Address: _____
City: _____ State: _____ Zip: _____

P.O. Box 120, Dept. 230, Miami Beach, FL 33139

UNIQUE DIAGNOSTIC LABORATORY SERVES HOSPITALS NATIONWIDE

When an infant becomes seriously ill because of a birth defect of body chemistry, rapid diagnosis can often prevent brain damage and might even be the difference between life and death. A special problem arises when the defect involves rare or complex chemical changes which cannot be identified by usual laboratory methods. In many cases, no physician can be expected to guess what to test for, and the critical nature of the illness does not allow time for a trial and error approach. Now, a newly opened laboratory at Children's Hospital, Philadelphia, accepts samples from doctors nationwide for testing. The Center for Mass Spectrometric Diagnosis of Metabolic Disease is supported by funds from the March of Dimes, whose aim is prevention of birth defects. The Laboratory's special capability is mass spectrometry, a method of identifying unknown substances in mixtures of biological material. Small samples of blood, spinal fluid, and other material can be flown from anywhere in the country for rapid analysis. By mass spectrometry, molecules in sample reporting of test results can enable timely treatment to counter metabolic disturbances. The laboratory is directed by Dr. Stanton Segal, professor of pediatrics at the University of Pennsylvania. The laboratory staff includes Robert Cohn, M.D., Peter Jozky, V.M.D., Ph.D., Kari Roth, M.D., and Kenneth Tomer, Ph.D.

A SAMPLE is injected for mass spectral analysis. Identification of unknown molecules can pinpoint previously unknown birth defects.


TO PROTECT THE UNBORN AND THE NEWBORN
march of dimes

Wallace's

First with More Discounts!

Lower Prices ★ Discounts ★ Continued Savings

PRE-REGISTERED STUDENTS AVOID THE LONG LINES!



Special Service
Available to Save You Time and Labor
PRE-REGISTERED STUDENTS
(No Cash Required)
(No Money Advanced)

And Check Our
FREE TEXTBOOK Offer!

Discount...
Savings...
And More
FREE TEXTBOOKS!
Or Related Supplies

WALLACE'S BOOK STORE

WE'RE EXPLODING!

NEW BOOKS
NEW PACKAGES
NEW COURSES
NEW IDEAS

WALLACE'S BOOKSTORE!


We're Discounting NEW Books

Have you ever heard of such a thing? We haven't! But with more and more new books being required for students, we realize it's a discount on New Books that you need. And if you shop at Wallace's Book Store, that's just what you'll get. It might shake up the book industry, but we think you're worth it.

STUDENTS Save On Your Class Ring

Was \$2000
Now the price...
\$500 Special
Class Ring

Consider CLASS RINGS



WALLACE'S BOOK STORE

Wallace's Book Store

NAME _____

Twenty and no/100 \$20.00

Wallace's Offers Discounts to Everyone!

If you missed out on the above discounts, just watch this semester!

Textbooks ★ Art Supplies ★ Music
★ Sportswear ★

We Guarantee to Save YOU More!

Wallace's Book Store



Something in Store for Everyone

English as a second language

The International Student Office at the University of Kentucky offers English As A Second Language classes for international students and their spouses who need help with the English language. It is very important to achieve a certain degree of proficiency in English, to be able to do well in your academic field. We strongly urge those of you who do not have a TOEFL score of at least 550 to register for these classes. They are free.

Registration: International Student Office, room 2, Alumni Gym.

ESL 1—Basic English—Designed for students needing help with conversation, vocabulary, pronunciation and aural comprehension. Dialogues, some reading and dictation, pronunciation drills.

ESL 2—Intermediate Level—Deals with some conversation, reading comprehension, writing, grammar and aural comprehension. Some dialogues, pronunciation drills and discussion of selected cultural topics.

ESL 3A and B—Advanced Level—Conversation, reading, grammar and aural comprehension of more advanced level. Review of difficult sentence structures.

ESL 4—Individual Tutoring—Drop-in lab. For students who need help in a specific area like writing or pronunciation. The emphasis is on individualized help. It will operate on a "drop in" basis.

ESL 5—American Literature—One night a week students will meet to discuss literature and poetry by American authors.

- HOW DO I CHANGE MY MAJOR?
- HOW DO I GET A JOB?
- WHAT IS THE PROCEDURE FOR DROP-ADD?
- HOW CAN I BE ASSIGNED OR CHANGE ADVISORS?

Call NEXUS INFORMATION SERVICE 257-3821

for answers to your questions.

The Nexus Directory of available tapes is available in the Student Center and is printed on page 11 of the student phone book.

College of Home Economics - cont										
HFE 312-2	Applied Nutrition, Lab	3	W	12-11:50	CE 106	Concon				
HFE 312-1	Applied Nutrition, Lab	3	W	2-3:50	CE 106	Concon				
HFE 312-4	Applied Nutrition, Lab	3	W	12-11:50	CE 106	Concon				
HFE 314-1	Food Service Acctg. Lab	3	W	2-3:50	CE 201	Concon				
HFE 512	Normal & Therapeutic Nutr	3	W	11-11:50	HE 210	Hammerschmidt				
HFE 781-3	Spec Prob Food Nutrition	1-3	THA	12-11:50	HE 210	Hammerschmidt				

TEXTILES, CLOTHING AND MERCHANDISING										
TC 101	TC 230	TC 335	TC 533	TC 597	TC 768	TC 782				
TC 220	TC 320-2	TC 414	TC 592	TC 640	TC 772	TC 787				
TC 221										

UNIVERSITY HONORS PROGRAM										
HUM 101	HUM 300-1	HUM 302-2	CE 150-99	HIS 108-99	MA 214-99	PHYS 104-99				
HUM 202-6	HUM 300-2	HUM 302-1	CE 152-99	HIS 109-99	MA 216-99	PHYS 106-99				
HUM 202-10	HUM 300-3	HUM 309	CE 148-99	MA 116-99	PHYS 232-99					

COLLEGE OF LAW										
LAW 807-1	LAW 820-2	LAW 853	*LAW 879-2	LAW 950-10	FLAW 960	LAW 964-2				
LAW 807-2	LAW 821	LAW 855	LAW 887	LAW 950-11	LAW 961-1	LAW 964-2				
LAW 811-1	LAW 824	LAW 860	LAW 890-1	LAW 950-28	LAW 961-2	LAW 964-2				
LAW 811-2	LAW 825	LAW 861	LAW 890-2	LAW 950-36	LAW 961-2	LAW 964-2				
LAW 811-3	LAW 825-1	LAW 868	LAW 898	LAW 950-35	LAW 961-2	LAW 964-2				
LAW 817	LAW 825-2	LAW 870	LAW 899	LAW 950-36	LAW 961-2	LAW 964-2				
LAW 818	LAW 826	LAW 877	LAW 910	LAW 950-40	LAW 961-2	LAW 964-2				
LAW 819	LAW 851-1	LAW 877	LAW 914	LAW 950-51	LAW 961-2	LAW 964-2				
LAW 820-1	LAW 851-2	*LAW 879-1	LAW 935	LAW 950-55	LAW 961-3	LAW 964-2				
*LAW 879-1	Commercial Law I	3	TWP	9-9:50	LAW 215	Weinberg				
*LAW 879-2	Commercial Law I	3	TWP	10-10:50	LAW 215	Weinberg				

LEXINGTON TECHNICAL INSTITUTE										
*FNSC 270-1	*FNSC 271-2									
*FNSC 270-1	Family Health Nursing, Cl Lab	8	M	1-5:20	TBA	Staff				
	Cl Lab									
	Lab									
*FNSC 271-2	Nursing Mgmt Phys 111 II	8	TBA	10-11:50	LTI 230	Staff				
	Cl Lab									
	Lab									
	Cl Lab									

COLLEGE OF LIBRARY SCIENCE										
LS 504	LS 514	LS 601	LS 605	PLS 420	LS 687	LS 690-92				
LS 509	PLS 516	LS 603-1	LS 609	LS 625	LS 691-1	PLS 690-94				
PLS 510-2	PLS 522	LS 603-2	LS 610-1	PLS 637	LS 690-2	LS 695				
LS 510-3	LS 600-91	LS 604	LS 614	PLS 640	LS 690-91	LS 768				
LS 510-91										
*LS 601	Adv Cat & Classification	3	TH	8-9:15	Com 205	Swich				

COLLEGE OF MEDICINE										
ANATOMY										
ANA 206	ANA 532-1	ANA 534	ANA 536	ANA 629	ANA 636	ANA 769				
ANA 503	ANA 532-2	ANA 536	ANA 611	ANA 633	ANA 768					
BEHAVIORAL SCIENCE										
BSC 221-1	BSC 221-3	BSC 529	BSC 767	BSC 776	BSC 777	BSC 790				
BSC 221-2	BSC 527	BSC 546	BSC 772							
BIOCHEMISTRY										
BCH 502	BCH 503	*BCH 619	BCH 640	BCH 669	*BCH 780					
BCH 502	General Biochemistry	3	W	10-10:50	MC M6553	Staff				
BCH 619	Seminar in Biochemistry	1	W	4-4:50	MC M6341	Lester				
*BCH 780	Topics in Biochemistry: Computer Based Spect in BCH	3	By app		MC M6635	Laine				
CONCORD										
CON 821										
MEDICAL MICROBIOLOGY AND IMMUNOLOGY										
MHI 515	MHI 707	MHI 811	MHI 812							
PATHOLOGY										
PAT 324	*PAT 421	PAT 826	PAT 839							
*PAT 421	Fundamental Human Pathology	4	TBA		MC M6503	Waise				
PHARMACOLOGY										
PHA 558	PHA 622	PHA 650	PHA 750	PHA 768	PHA 769	PHA 770				
PPHA 616	*PPHA 641	PHA 671								
*PPHA 641	Bioassay Human Subj	2	By app		MC M6524	Jasinaki				
PHYSIOLOGY AND BIOPHYSICS										
PHY 206	PHY 511	PHY 640	PHY 769	PHY 781	PHY 810-2	PHY 812				
PHY 504	PHY 627	PHY 768	PHY 772	PHY 810-1						

WELCOME UK STUDENTS

FOUNTAIN FESTIVAL

STARRING
new exciting, elegant,
fountain desserts

BROWNIE CAKE DELIGHT Any flavor ice cream chocolate cake with Hot Fudge.	BANANA ROYALE A hot sundae with ice cream circles.
4 X 4 4 scoops and 4 toppings, all of your choice.	HOT FUDGE SUNDAE choice of Ice Cream hot fudge topping.
SPLIT 3 scoops sherbert, fruit topping and sliced banana.	SHERBERT FRUIT SPLIT Fruit topping, cake your choice any 2 flavors ice cream.
Triple Thick Shake or Malt Triple scoop malt or shake your flavor choice.	Malt —horn your choice of 7 flavors covered with Hot Cream Topping.

BASKIN-ROBBINS
ICE CREAM STORE
31
BASKIN, ROBBINS 1975

361 Rose St. 252-9485

ENIAM LTD.

CHARLIE DANIELS BAND

SPECIAL GUESTS
ELVIN BISHOP and Cate Brothers
FRIDAY, JAN. 14 7:30PM
\$7.50 ALL SEATS RESERVED
TICKETS ON SALE NOW

Lexington Center box office and all ten Central bank locations in
Lexington

ORDER BY MAIL NOW
CDB, c Lexington Center, 412 West Vine, Lexington, Ky. 40507
Certified Checks or money orders only Call 253-3465 for information

Lexington Center's
RUPP ARENA

Every Tuesday night is Family Night

\$7.49

In case you didn't know, Tuesday night is very special at Ponderosa Steak House. It's Family Night from 4 p.m. till closing. The night you can get a sizzling, rib-eye steak dinner (a chopped beef dinner) with baked potato, tasty salad and a roll with butter. At a very special price, only \$7.49. So come to Ponderosa Tuesday night. Family night.

PONDEROSA STEAK HOUSE

SQUARE MEAL • SQUARE DEAL

286 Southland 316 Russell Cave Road
Eastern By-Pass, Richmond

Open 11 a.m.—9 p.m. Sunday through Thursday
11 a.m.—10 p.m. Friday and Saturday

Next year you could be on scholarship.

An Air Force ROTC 2-year scholarship. Which not only pays your tuition, but also gives you \$100 a month allowance. And picks up the tab for your books and lab fees, as well.

And after college, you'll receive a commission in the Air Force...go on to further, specialized training...and get started as an Air Force officer. There'll be travel, responsibility, and a lot of other benefits.

But it all starts right here...in college...in the Air Force ROTC. Things will look up...so look us up. No obligation, of course.

For more info: Maj. George P. Yancey
Room 203, Barker Hall 257-1681

Put it all together in Air Force ROTC.

Sell ads for the Kernel 258-4646

Lexington's
Oldest
Restaurant

110 SOUTH LEXINGTON
JUST AROUND THE CORNER
FROM THE PROBLEMS

FOR RESERVATIONS
233 1531

**Come PLAY
With Us**
(or, do you need
to drop/add?)

**TA 121—INTRODUCTION
TO THEATRE**

now counts toward Area V,
Part A, of the General Studies
Requirements. And there is
space in all five sections
planned for Spring Semester.
See the Schedule Book for
complete details. Or call 257-
2977.

(Department of Theatre Arts,
College of Fine Arts)

**"Who me?"
Yes YOU!**

**We appreciate
your comments!**

CHEVY CHASE COIN LAUNDRY

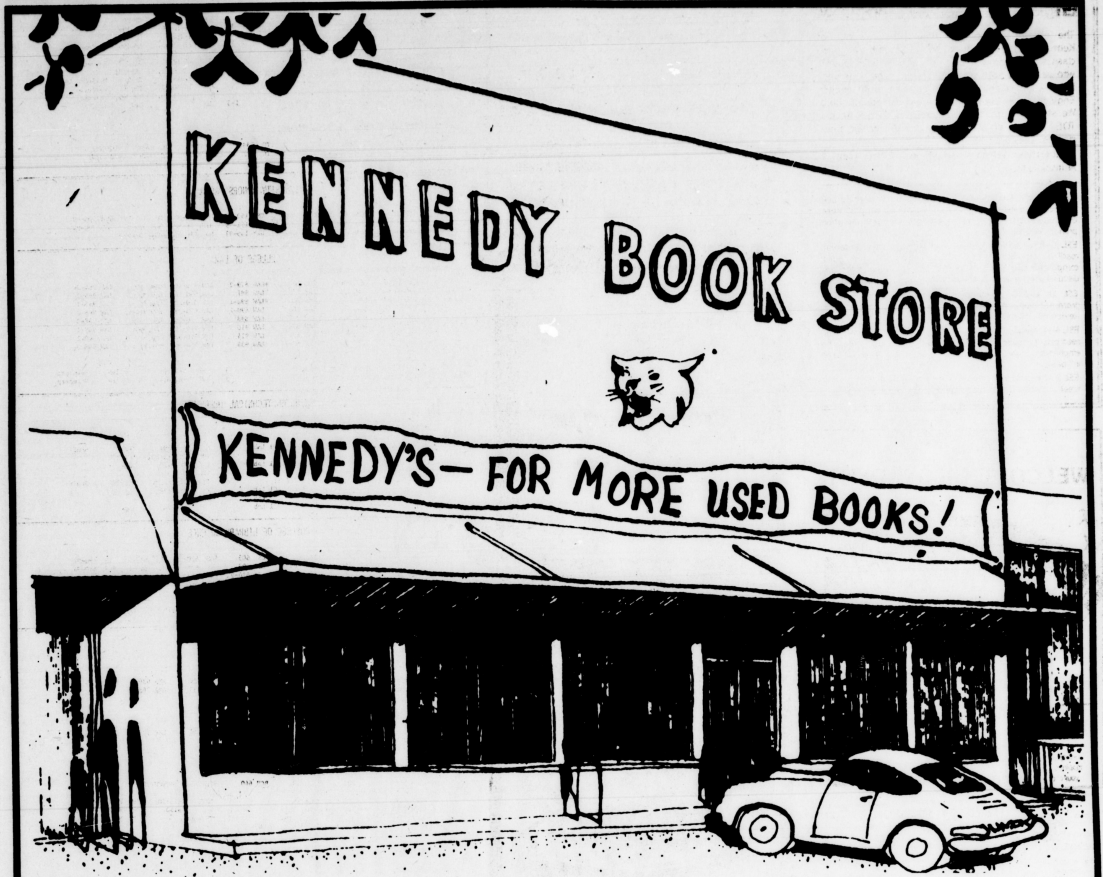
312 SOUTH ASHLAND

WELCOMES UK STUDENTS AND FACULTY

"COME CLEAN WITH US"

SELF SERVICE LAUNDRY **DROPOFF LAUNDRY** **BULK DROPOFF DRY CLEANING**

OPEN 8:00 a.m. - 10:00 p.m. PHONE 266-5721



No Gimmicks

We Are Competitive on New Books

**Prices on Our Used Books
Have Not Been Increased**

**We think you will make a big mistake
if you do not shop**

KENNEDY BOOK STORE

The store UK students prefer by 2 to 1

RADIATION MEDICINE												
RM 472	RM 548	RM 549	RM 549	RM 640	RM 640	RM 740						
COLLEGE OF NURSING												
NUR 201-4	NUR 615-1	NUR 768	NUR 811	NUR 821	NUR 831	NUR 855	NUR 855					NUR 895
NUR 201-5	NUR 615-2	NUR 771-1	NUR 815	NUR 821	NUR 831	NUR 855	NUR 855					NUR 899
PNR 543	PNR 622	PNR 761	PNR 811	PNR 821	PNR 831	PNR 855	PNR 855					PNR 899
COLLEGE OF PHARMACY												
PHR 343	PHR 475	PHR 778	PHR 823-1	PHR 838	PHR 874	PHR 886	PHR 886					PHR 896
PHR 342	PHR 476	PHR 780	PHR 823-2	PHR 850	PHR 875	PHR 890	PHR 890					PHR 892
PHR 344-1	PHR 545	PHR 780	PHR 823-1	PHR 861	PHR 878	PHR 892	PHR 892					PHR 895
PHR 344-2	PHR 630	PHR 820-1	PHR 830	PHR 870	PHR 880	PHR 895	PHR 895					PHR 896
PHR 395	PHR 768	PHR 820-2	PHR 835	PHR 872	PHR 881	PHR 896	PHR 896					
PHR 400	PHR 769	PHR 824										
COLLEGE OF SOCIAL WORK												
SW 091	SW 395	SW 443-3	SW 443-4	SW 443-5	SW 443-6	SW 443-7	SW 443-8	SW 443-9	SW 443-10	SW 443-11	SW 443-12	SW 443-13
SW 124-1	SW 444-1	SW 444-2	SW 444-3	SW 444-4	SW 444-5	SW 444-6	SW 444-7	SW 444-8	SW 444-9	SW 444-10	SW 444-11	SW 444-12
SW 124-2	SW 444-1	SW 444-2	SW 444-3	SW 444-4	SW 444-5	SW 444-6	SW 444-7	SW 444-8	SW 444-9	SW 444-10	SW 444-11	SW 444-12
SW 222-2	SW 444-1	SW 444-2	SW 444-3	SW 444-4	SW 444-5	SW 444-6	SW 444-7	SW 444-8	SW 444-9	SW 444-10	SW 444-11	SW 444-12
SW 222-3	SW 444-1	SW 444-2	SW 444-3	SW 444-4	SW 444-5	SW 444-6	SW 444-7	SW 444-8	SW 444-9	SW 444-10	SW 444-11	SW 444-12

SM 223-1	SM 444-5	SM 477	SM 527-2	SM 623	SM 640-6	SM 710
SM 223-2	SM 444-6	SM 501-2	SM 531	SM 622	SM 640-7	SM 715
SM 223-3	SM 444-7	SM 505-91	SM 601	SM 624	SM 650-1	SM 770
SM 330	SM 445-1	SM 510-91	SM 603	SM 630	SM 650-2	SM 790
SM 445-2	SM 511-1					
SM 225-2	Skills in Social Work	4	TR	12-12:50	CR 233	Watkins
SM 520-2	Interpretive Meth SM	4	TR	3:30-5:20	CR 306	Weinberg
SM 605	SW Practice High Sw	2	H	10-11:50	RR 206	Weinberg
SM 611	Thres on New Soc Wks	2-3	T	6-7:50p	OT 113	Waltman
SM 624	Pres Hum Sex for Soc Pr	2	H	6-7:50p	OT 112	Waltman
SM 640-2	Grad Edu Practicum I	10	TR	8-11:50	TRC 101	Waltman
SM 640-3	Grad Edu Practicum I	10	TR	9-10:50	Kearle 2070	Brantigan
SM 640-4	Grad Edu Practicum I	10	TR	10-10:50	TRC 101	Murelock
SM 640-5	Grad Edu Practicum I	10	TR	10-30-12:20	MR 203	Hallman
SM 640-6	Grad Edu Practicum I	10	TR	10-30-12:20	MR 203	Hallman
SM 650-2	Prob Solving Seminar	2	H	10-11:50	MS 213	Staff
SM 680	50 Prob in SW Practice: IS Aging	2-4	TR			Staff
SM 740	Grad Edu Practicum II	8	TR			Staff

*Added course
*Changed course
†Five or less vacancies

THE Stereo Shoppe

132-2C Southland Drive
278-7278
OPEN MON. - FRI. 11 - 9; SAT. 11 - 6
Sale prices effective thru
Saturday, Jan. 15
ONLY WHILE LIMITED QUANTITIES LAST



ACCOUSTEX 1200
List Price \$149.95
Components:
12" Woofer
5" Midrange
3 1/2" Piano-electric Tweeter



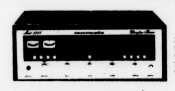
Sankyo
STD 1410
Stereo Cassette Deck
Semiconductors: 4 ICs, 12 transistors
Frequency response: 40-14,000 Hz
Signal-to-noise ratio: 55dB (CRO2 tape)
Distortion: 1.5% per cent
Wow & Flutter: 0.15 per cent

Frequency Response: 30-20,000 Hz
Nominal Impedance: 8 ohms
Power Handling Capacity: 65 watts, RMS continuous
Crossover: RC type 1,000 HZ & 4,000 HZ
Cabinet: 24" x 16" x 12" Acoustic Suspension. Simulated walnut laminate.
Warranty: 5 Years

49.95

99.95
Half Price

MARANTZ

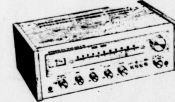


MARANTZ 2230
20watts RMS per channel with no more than 5 per cent total harmonic distortion. 2.2 microvolt VFM sensitivity. 100dB S/N ratio. Walnut veneer cabinet available option.

NATIONALLY ADVERTISED VALUE 399.95

289.95 When purchased separately
249.95 When purchased with any pair of home loud speakers at our reg. discount price.

PIONEER



SX-750
AM/FM STEREO
receiver 50 watts/channel with no more than 0.1% total harmonic distortion.

NATIONALLY ADVERTISED VALUE 400.00

319.95 when purchased separately
289.95 When purchased with any pair of home loud speakers at our reg. discount price.

PIONEER



SP-600
IN DARK CASSETTE WITH AM/FM STEREO
—Stereo Indicator
—Adjustable Shells
—Fast Forward, Rewind, and Eject Buttons
—Auto Stereo Memory Switch
List \$149.95 NOW

119.95

JENSEN



4SP16 200watt car speakers. Model CR60. List \$149.95 NOW

39.95

maxell



UD90 cassette 2 pak with FREE case. List \$15.95. NOW

10.95

Technics by Panasonic



The SL20 is a fully manual, precision turntable. And has Technics "frequency generator servo belt-drive" system, which gives you unsurpassed speed accuracy, even when AC current fluctuates.
—Wow/Flutter: 0.05 per cent WRMS—Rumble: 6dB (DIN A), 45dB (DIN B)
—Electronic speed change—Universal "S" shaped tubular tonearm—Anti-skating—Viscous damped—Cueing—Independent variable pitch control for 3 1/3 and 4 5/8 rpm.
Completes with Empira 201E stereo cartridge. List \$149.95 NOW

88.00

THE Stereo Shoppe



HONG KONG PAVILION

Chinese Cuisine
(Cantonese, Szechuan & Mandarin)
120 Upper Street
Lexington, Ky. 40507
Phone (606) 252-4747
Mon. Sat. 11:30 a.m. - 11 p.m.
Sun. 11:30 a.m. - 10 p.m.

There's no natural Protection

Bath defects are forever. Unless you help.

White Painter Pants
Blue Painter Pants
Pre-washed Painter Pants
Bibs - White & Blue
Duckhead T - Shirts
Khaki Pants
LAN-MARK STORE
361 W. Main 254-7711

When you ask for a "Frye boot" be sure you get a **FRYE**

New Way Boot Shop
123 W. Main St.
255-1319