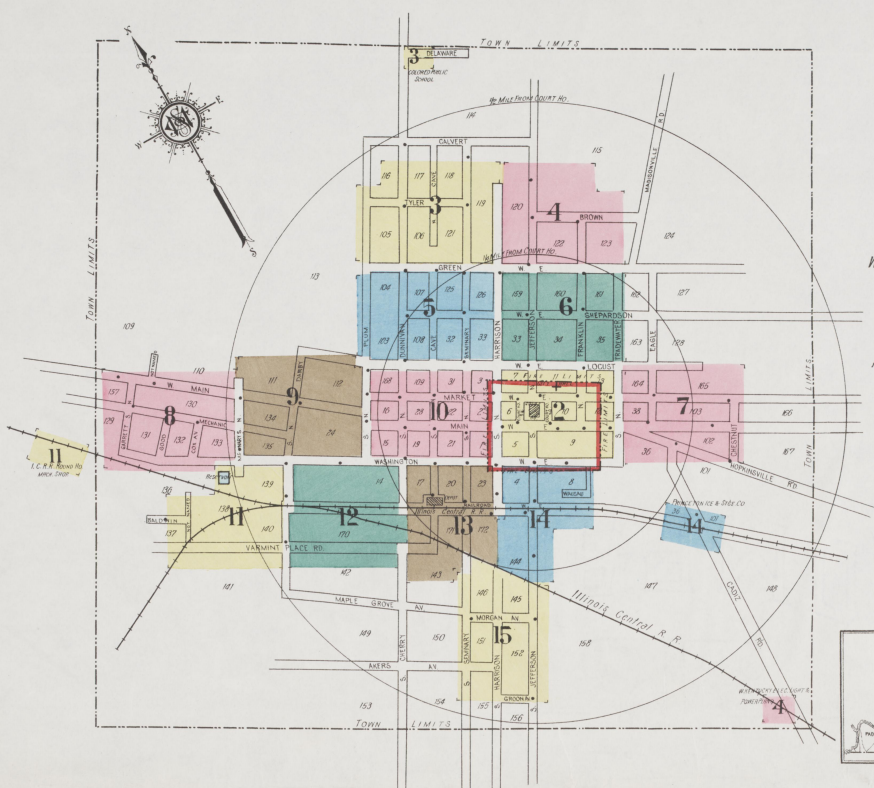


SCALE 600 FT. TO AN INCH

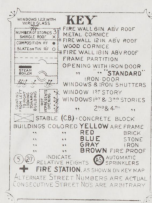


WATER FACILITIES:

Water works owned by town - direct pressure system. Water supplied from 6 wells & underground stream. Water taken from wells by one Ingersoll air compressor to 250,000 gal. Reservoir. Water pumped from underground stream by Jamesville Iron Works centrifugal pump, capacity 250 Gals per min. direct to mains. Water pumped from Reservoir direct to mains by two 18" diam. double-acting pumps, size 8" x 10" x 5" cap. 25 Gals per min. each - dynamic pressure 140 lbs. per sq. inch. Fire pressure 100 lbs. per sq. inch. 4 Miles of 4" to 8" mains. 72 ft. hydrants. Average daily consumption not known.

FIRE DEPT.:

Organized volunteer fire Dept. - Director, 8 men, paid for fire. One fire station, fully motorized. Apparatus, One Dodge motor truck. - One 40 Gal. chem. tank. - 100 chemical hose. - 2,000 ft. hose. Fire farm by telephone. Main 3/4 paved 2 Miles. Grades Level. Public lights, Etc.



INDEX

STREETS		INDEX		INDEX		INDEX				
Street Name	Number	Street Name	Number	Street Name	Number	Street Name	Number			
Akers Ave.	15	Garrett, S.	100-115	8 Main, E.	100-223	2	Washington, E.	100-124	14	
Baldwin	11	Good, E.	100-115	8	300-507	7	W.	101-125	12	
Bodie Place (arbitrary)	13	Green, E.	100-308	6	100-127	2	W.	100-128	2	
Brown	100-215	W.	101-217	4	200-509	10	W.	101-129	14	
Cadiz Road	200-209	W.	100-112	4	600-721	9	W.	200-510	10	
near Kentucky Electric Light & Power Co.	4	W.	101-111	6	800-917	8	W.	201-469	11	
Cave, N.	100-213	W.	200-514	6	Maple Grove Ave.	100-213	2	W.	501-625	12
W. S.	300-417	5	201-515	6	Market, E.	300-507	7	W.	600-716	9
W. S.	600-535	3	101-213	10	W.	100-129	2	W.	800-819	11
W. S.	100-115	10	301-415	6	Morgan Ave.	200-509	10	W.	811-834	8
W. S.	200-225	13	501-622	4	W.	100-211	15	W.	14	
Cherry	12 & 13	W. S.	501-621	3	Plum, N.	100-214	10	W.	101-125	12
Chestnut, N.	100-109	7	100-118	10	W.	101-215	9	W.	101-128	2
W. S.	100-115	7	200-514	6	W.	300-415	5	W.	101-129	14
Court House Square	100-119	2	300-218	13	W.	500-525	3	W.	201-469	11
Cox Ave.	100-113	8	201-219	14	W.	100-114	10	W.	501-625	12
Darby, N.	100-215	9	300-425	15	W.	101-115	9	W.	600-716	9
W. S.	100-115	9	300-507	7	W.	101-115	9	W.	800-819	11
W. S.	200-314	11	Hopkinsville Road	300-507	7	Railroad, E.	12, 13 & 14	W.	811-834	8
Delaware	201-315	12	Jefferson, N.	300-213	2	W.	12, 13 & 14	W.	14	
Depot Place (arbitrary)	3	W.	300-417	6	Place (arbitrary)	11 & 12	Baptist Church, (Colored)	10	W.	
Dunnivan, N.	100-213	10	500-619	4	Seminary, N.	100-217	10	Barbee Memorial Church (Cumberland Presby'n)	9	
W. S.	300-417	5	100-117	2	W.	300-417	5	Butler High School	2	
W. S.	500-541	3	200-821	14	W.	500-535	4	Cash & Cash, Coal Yard	14	
W. S.	100-213	10	322-425	15	W.	100-111	10	Central Presbyterian Church	10	
W. S.	300-417	5	Laura Place (arbitrary)	100-212	2	W.	200-521	13	Christian Church	2
W. S.	500-541	3	Locust, E.	101-213	6	W.	322-425	15	City Hall	15
W. S.	100-117	10	W.	300-414	7	W.	100-305	6	Hotel	10
W. S.	100-119	2	W.	101-118	10	W.	100-115	6	Laundry	2
W. S.	100-113	8	W.	200-515	5	W.	300-415	5	Lumber Yard	13
Eagle	100-213	7	W.	300-414	7	W.	300-415	5	County Court House and Jail	2
Franklin, N.	100-211	2	W.	101-114	6	W.	100-212	7	Cumberland Presbyterian Church	2
W. S.	300-417	6	W.	101-113	7	W.	101-211	7	Tradewater, N.	101-211
W. S.	500-517	4	W.	201-511	10	W.	101-211	7	W.	101-211
Garrett, N.	100-115	8	W.	601-623	9	W.	300-417	6	W.	101-211
			McHanic	700-721	9	W.	101-113	7	W.	101-211
			McNary, see W. Mairo	800-919	8	W.	101-113	7	W.	101-211
			N.	8 & 9		W.	300-511	3	W.	101-211
			S.	8, 9 & 11		W.	300-511	3	W.	101-211
						W.	2301-2312, arbitrary	13	W.	101-211
						W.	2401-2435	12	W.	101-211
						W.	2501-2533	11	W.	101-211

* Indicates only one side of Street shown

2

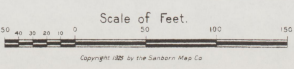
10

2

(287)



JULY 1925
PRINCETON
KY.



Copyright 1925 by the Sanborn Map Co.

3

(2397)

3



JULY 1925
PRINCETON
KY.

114

PUBLIC SCHOOL
(COLORED)
HEAT STOVE
LIGHTS ELEC

117

N. CAVE

118

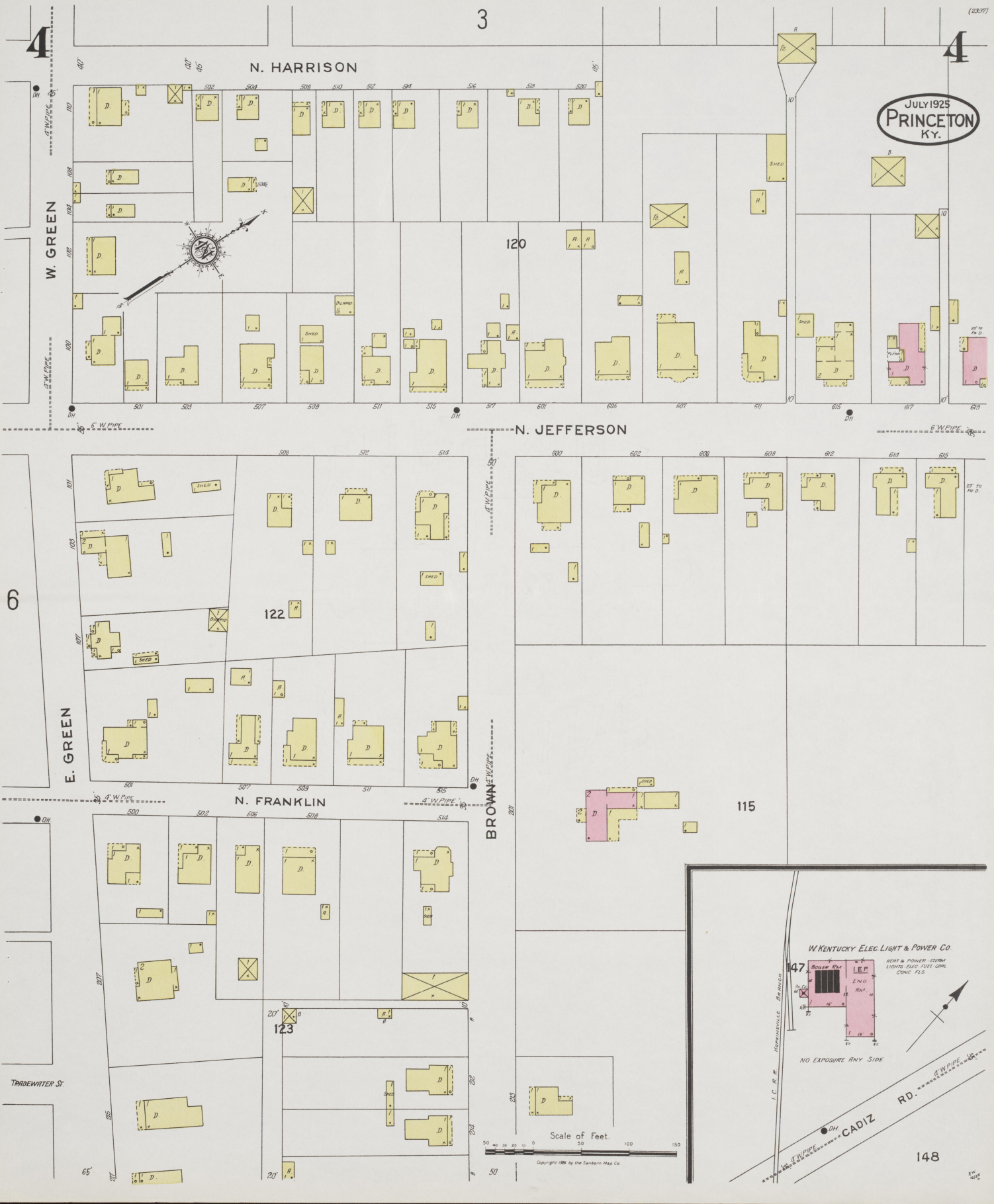
N. SEMINARY

119

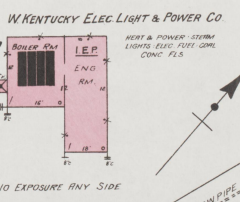
N. HARRISON

Scale of Feet.

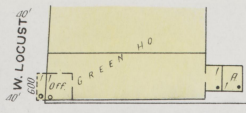
Copyright 1925 by the Standard Map Co



JULY 1925
PRINCETON
KY.

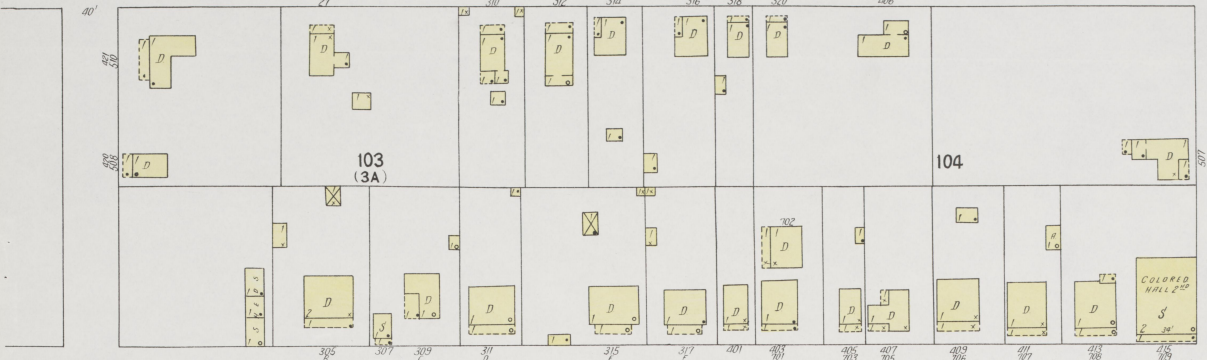
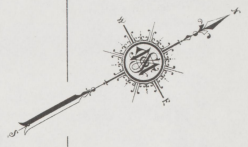


Scale of Feet.



N. PLUM

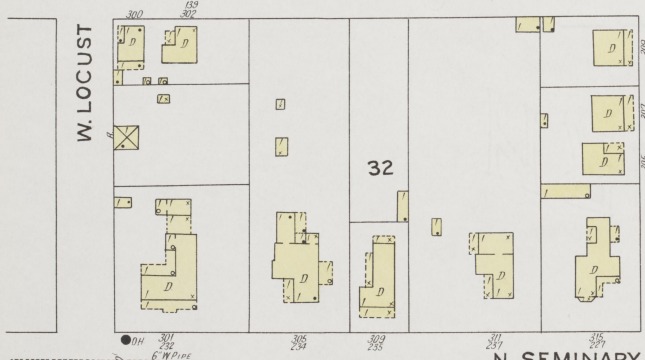
JULY 1925
PRINCETON
KY.



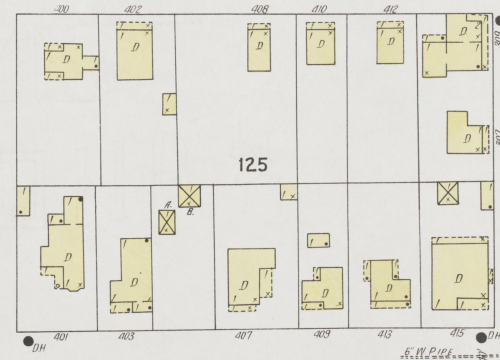
N. DUNNIVAN



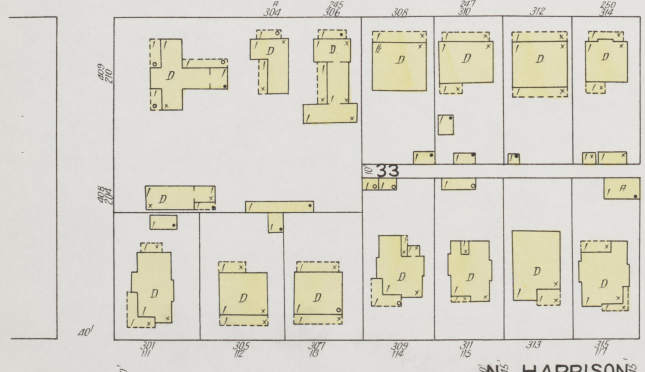
N. CAVE



W. SHEPARDSON



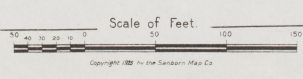
N. SEMINARY



126



N. HARRISON



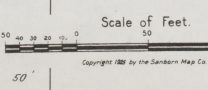
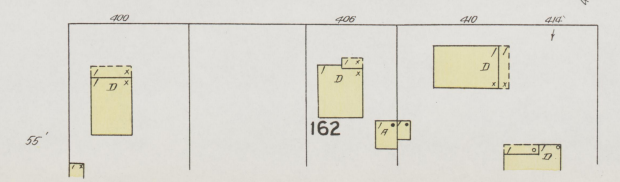
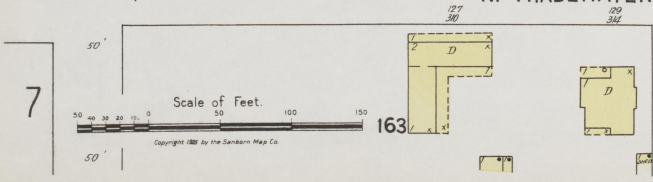
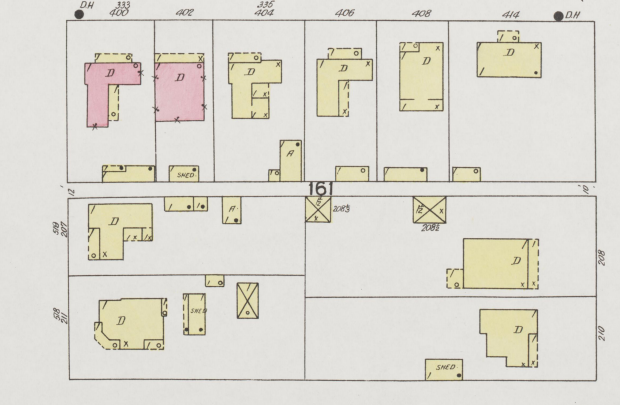
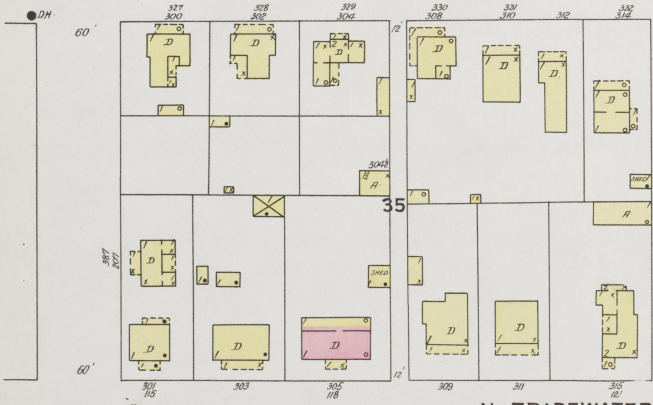
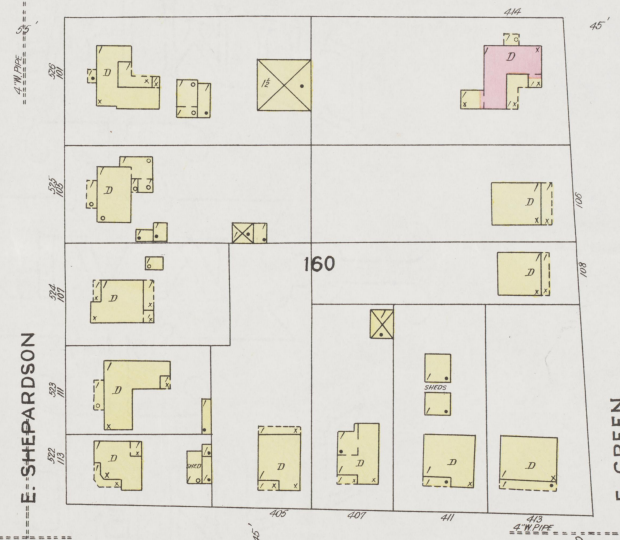
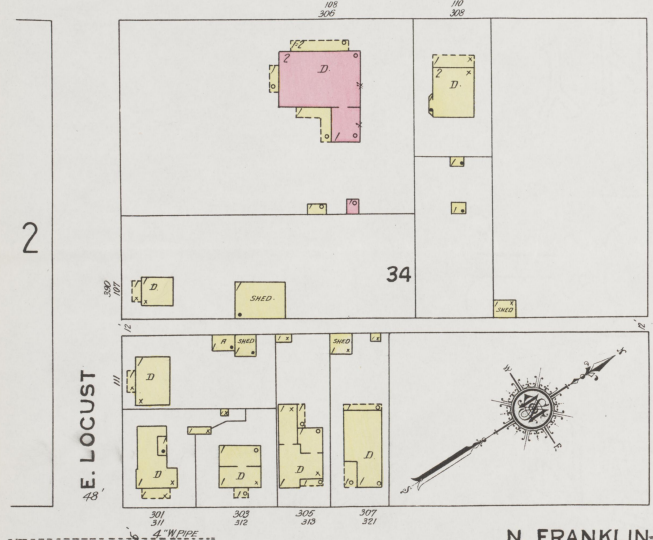
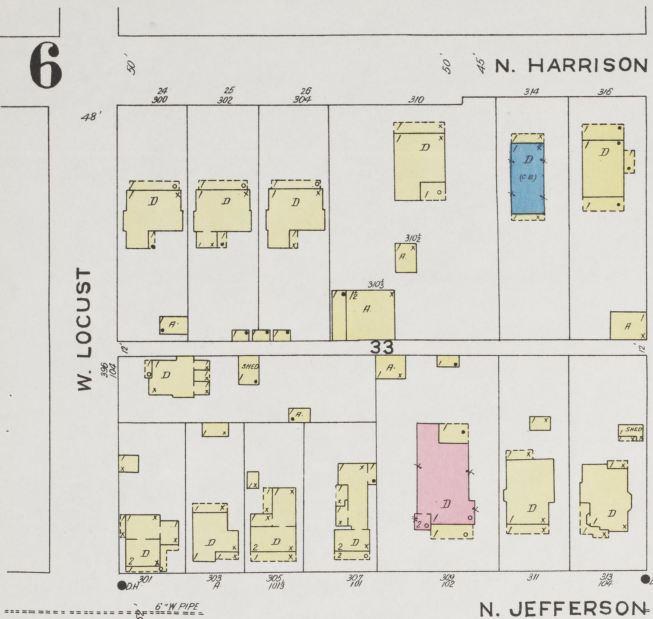
Copyright 1925 by the Sandborn Map Co

6

5

6

JULY 1925
PRINCETON
KY.



7

S. TRADEWATER

36

CADIZ RD.

HOPKINSVILLE RD.

S. CHESTNUT

167

2

38

E. MAIN

PUBLIC SCHOOL
BERT S. FERRISCHTS HOME
22' x 12' 7"

103

N. CHESTNUT

166

JULY 1925
PRINCETON
KY.

7

N. TRADEWATER

164

EAGLE

E. MARKET

165

E. LOCUST

Scale of Feet.

Copyright 1925 by the Standard Map Co.



JULY 1925
PRINCETON
KY.

129

157

109

GULF REFINING CO

OFF. & WARE HO.

S. GARRETT

N. GARRETT

LAURA PL.

131

GOOD

MASCHANIC

W. MAIN (MCNARY)

132

130

110

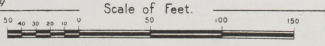
COX AV.

133

S. MCNARY

N. MCNARY

Scale of Feet.



Copyright 1925 by the Searns Map Co



(2397)

9

JULY 1925
PRINCETON
KY.



S. MENARY

N. MENARY

MAC HANIC

(MENARY)

S. DARBY

N. DARBY

W. WASHINGTON

W. MAIN

W. LOCUST

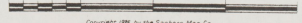
S. PLUM

N. PLUM

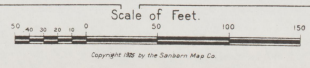
10

5

Scale of Feet.

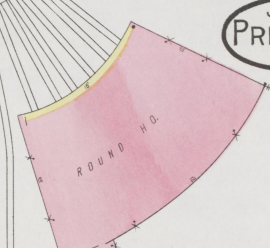


Copyright 1925 by the Searson Map Co.

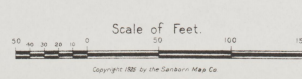
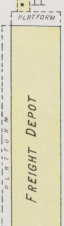
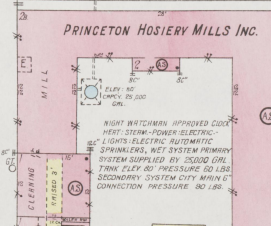
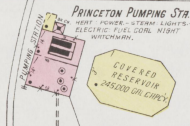
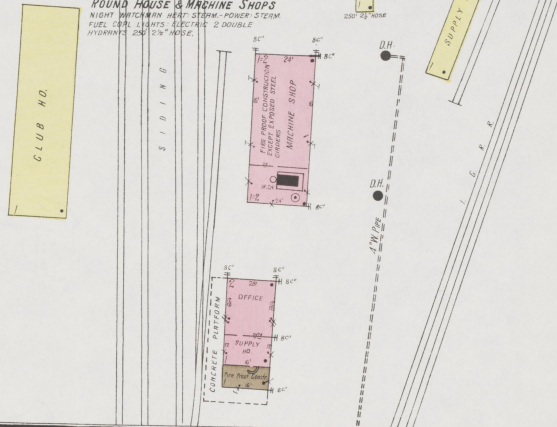


JULY 1925
PRINCETON
KY.

TURN TABLE



ILLINOIS CENTRAL R. R.
ROUND HOUSE & MACHINE SHOPS
NIGHT WATCHMAN APPROVED CODE
HEAT STEAM POWER ELECTRIC
FUEL COAL LIGHTS ELECTRIC 2 DOUBLE
HYDRANTS 200' 1 1/2" HOSE



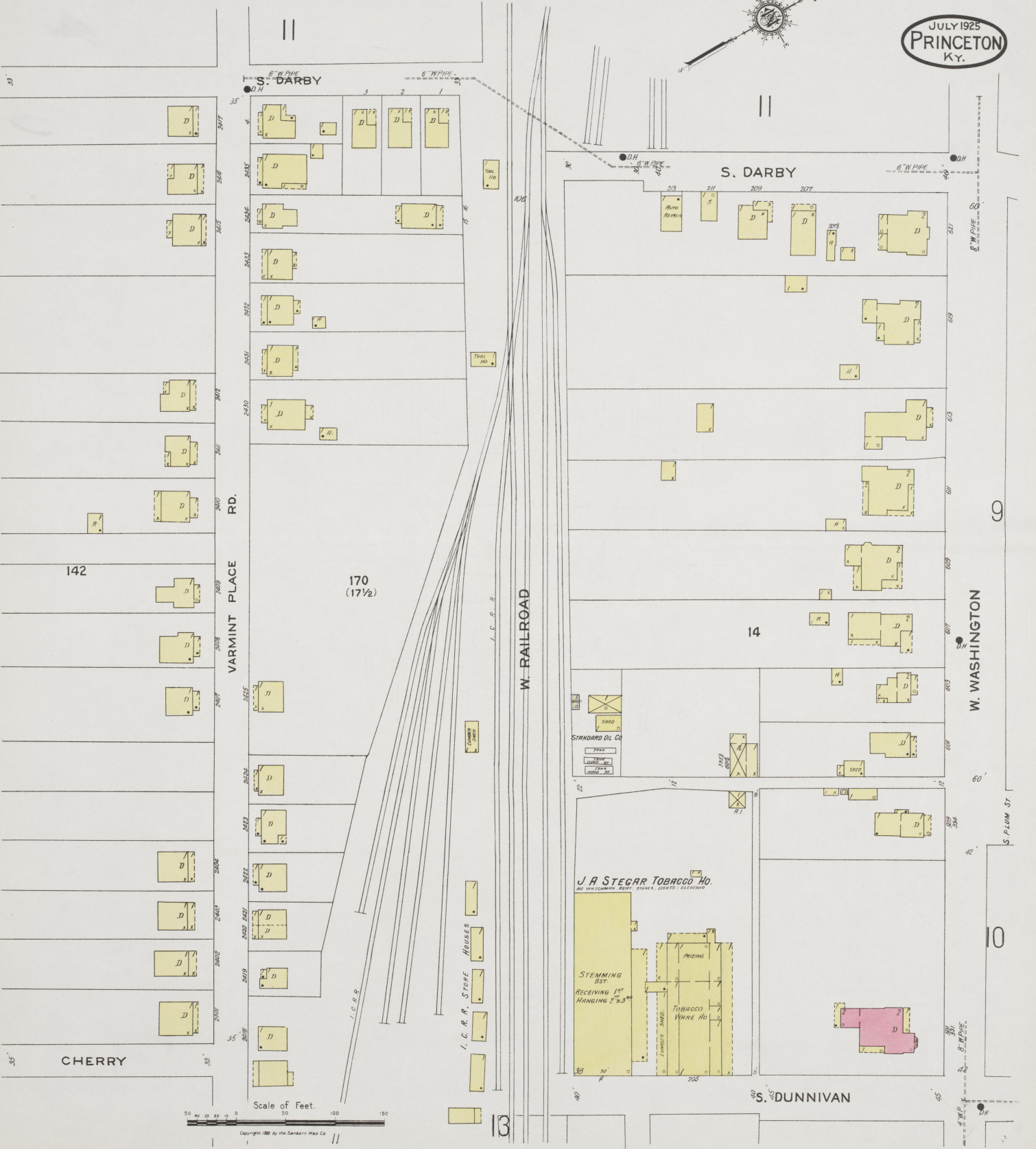
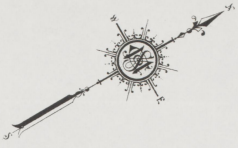
W. WASHINGTON

S. MENARY

DEPOT PL.

S. DARBY

JULY 1925
PRINCETON
KY.



S. DARBY

S. DARBY

RD.
VARMINT PLACE

W. RAILROAD

W. WASHINGTON

142

170
(17 1/2)

14

STANDARD OIL CO.

J. A. STEGAR TOBACCO HO.

STEMMING
RECEIVING 1ST
HANGING 2 1/2, 3
TOBACCO
WARE HO.

S. DUNNIVAN

Scale of Feet.

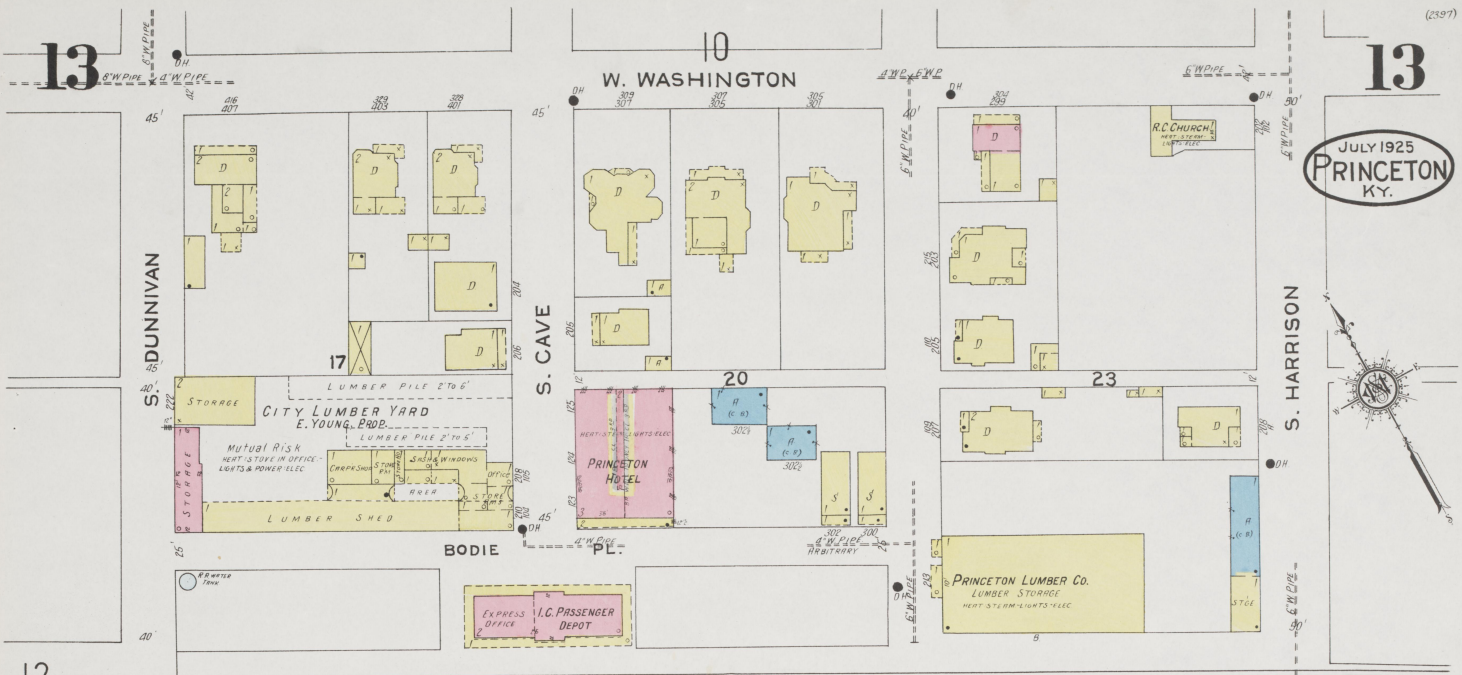
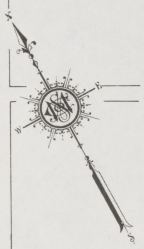
Copyright 1925 by the Sanborn Map Co.

13

W. WASHINGTON

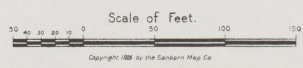
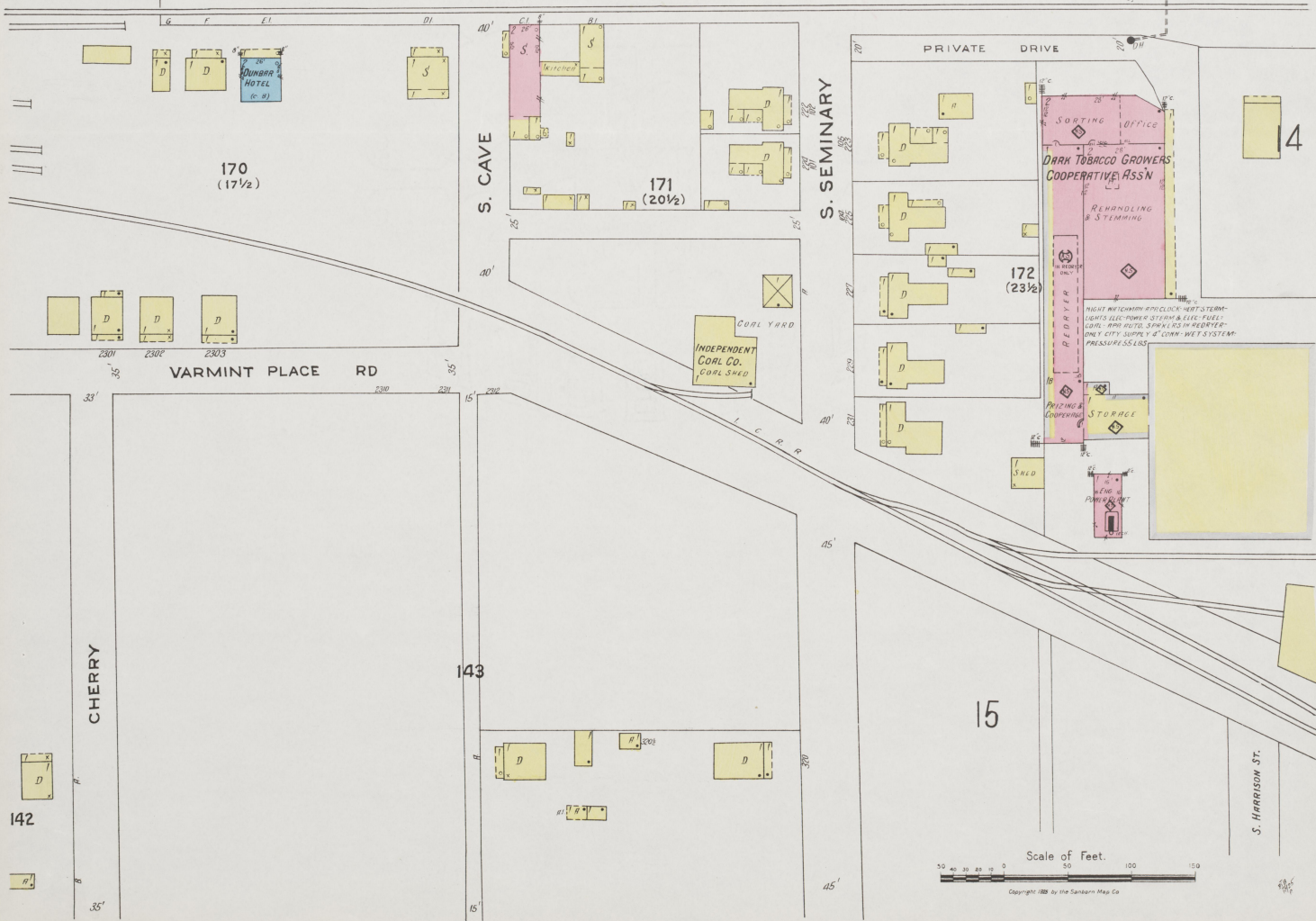
13

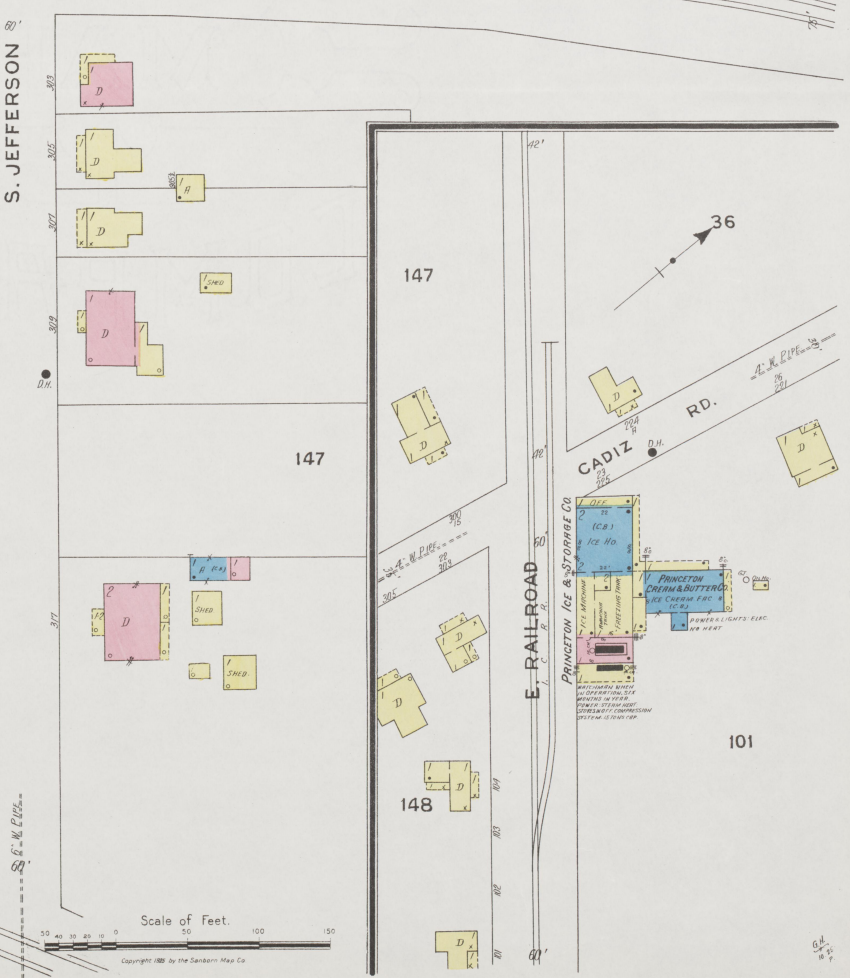
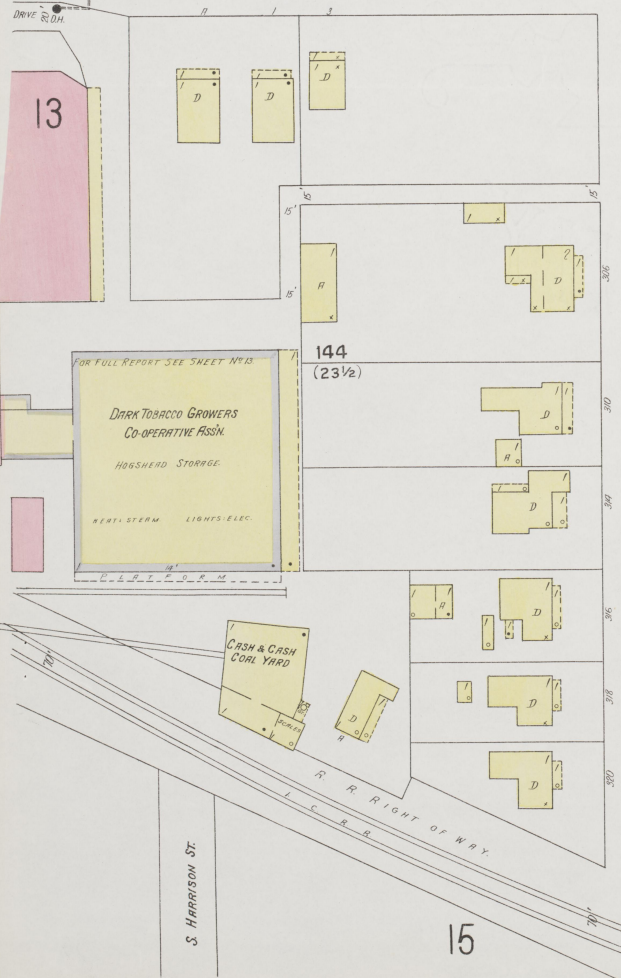
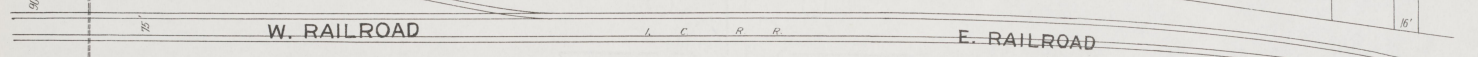
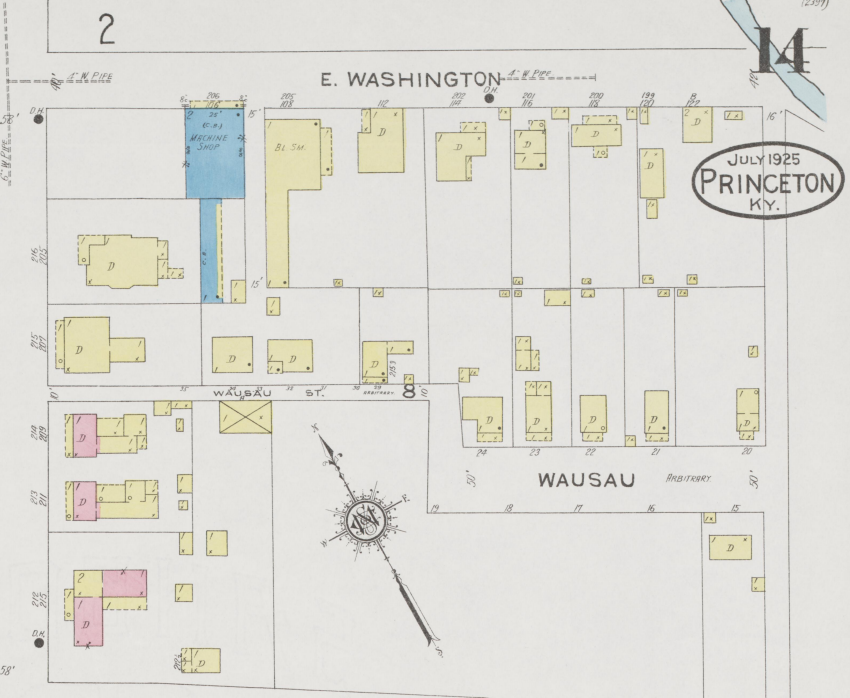
JULY 1925
PRINCETON
KY.



12

W. RAILROAD





15

15

JULY 1925
PRINCETON
KY.



RAILROAD RIGHT OF WAY
I.C.R.R.

TOWNSHIP WHITE HD
NEPT 370 1/2
1867-1868

S. SEMINARY

S. HARRISON

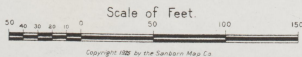
S. JEFFERSON

AKERS AV.

GROON AV.

MORGAN AV.

MAPLE GROVE AV.



Copyright 1925 by the Sanborn Map Co.