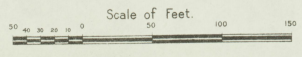
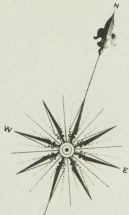


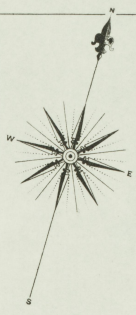
Aug 1901
MT. STERLING
KY.



N. SYCAMORE

W. HIGH 5

SEP 1901
MT. STERLING
KY.



N. SYCAMORE

N. MAYSVILLE

25

CLAY

HOWARD AV.

27

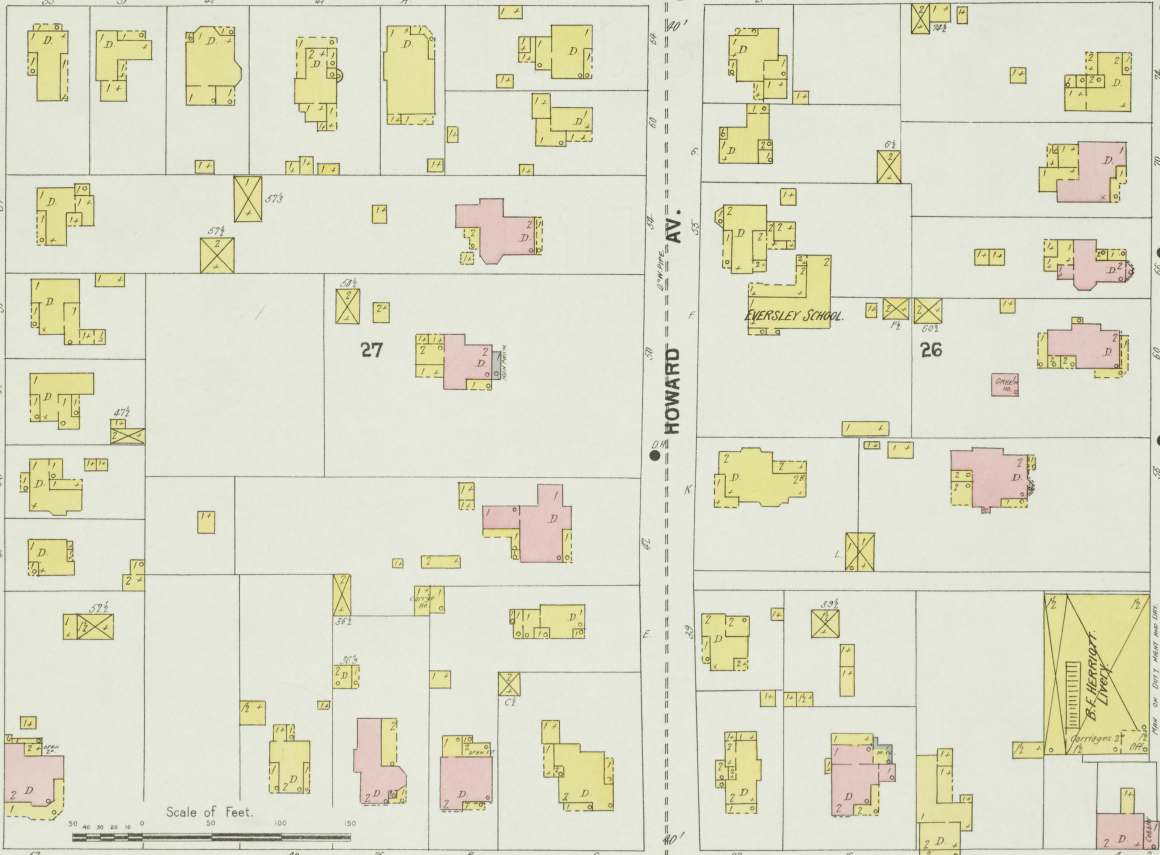
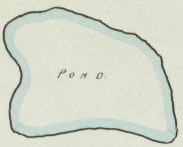
26

EVERSLEY SCHOOL

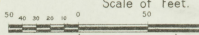
2

5

W. HIGH



Scale of Feet.

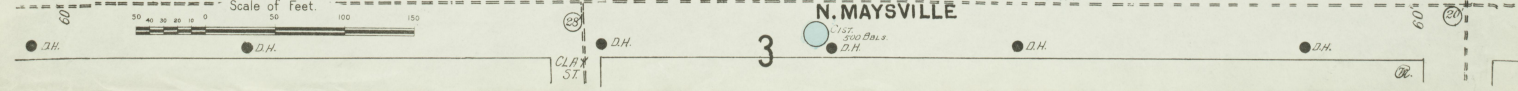
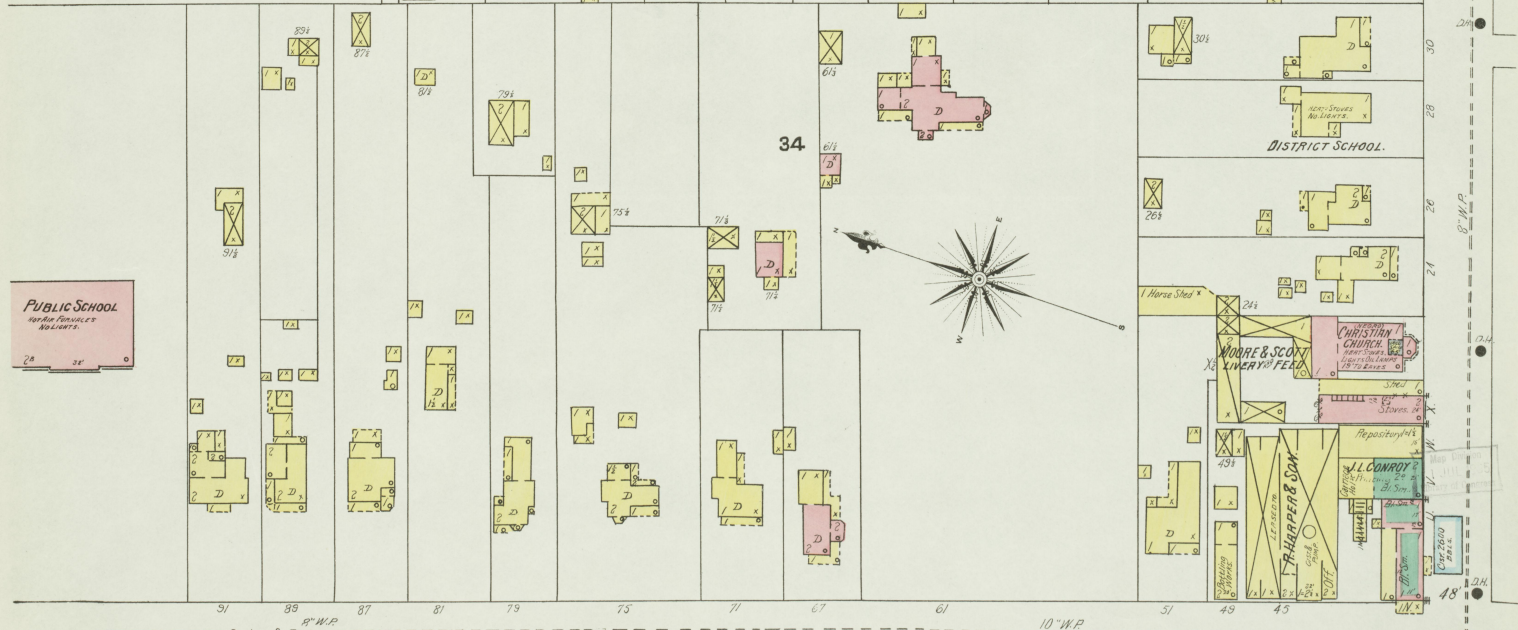
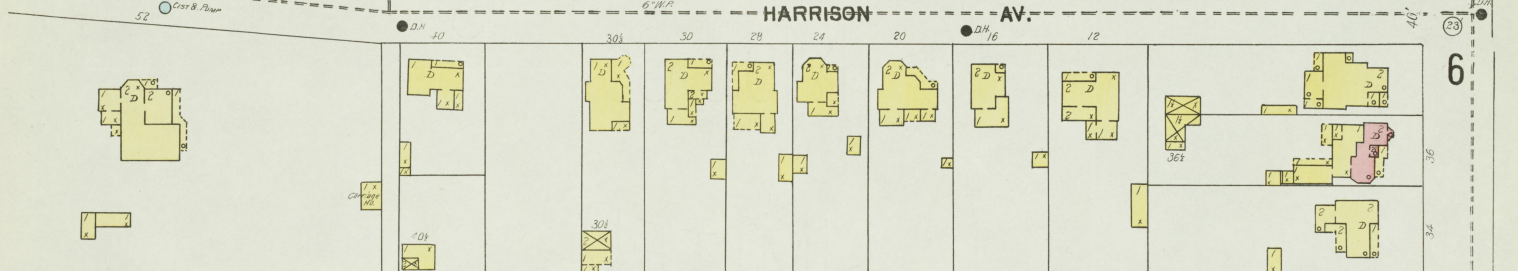
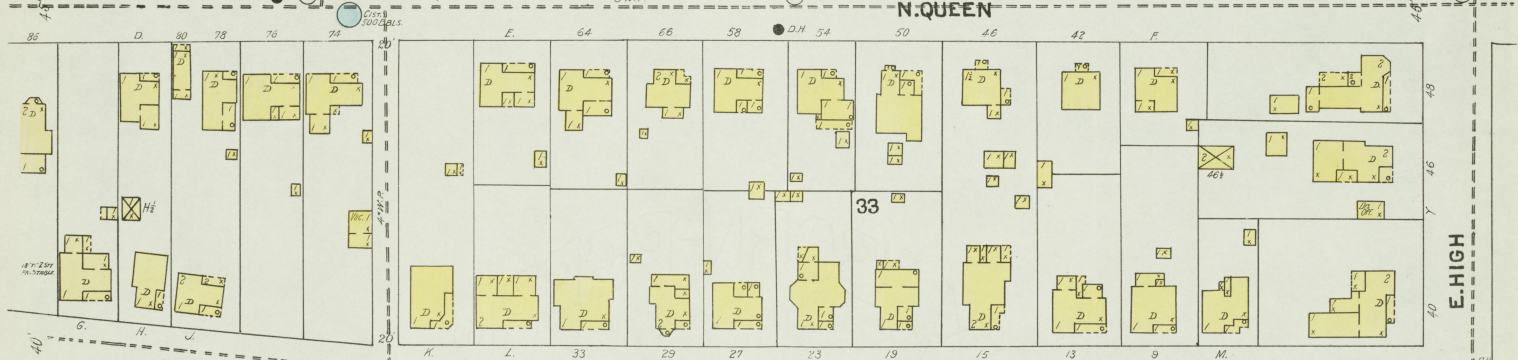
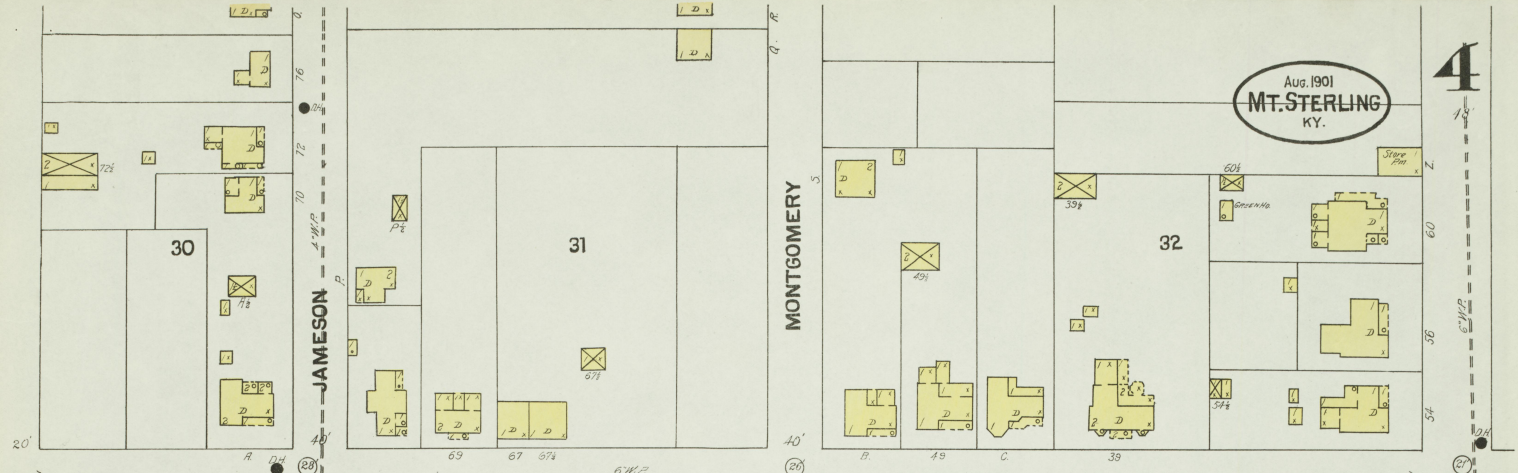


Map Division
JAN 1905
Library of Congress

COPY
1895
S&S

Aug. 1901
MT. STERLING
KY.

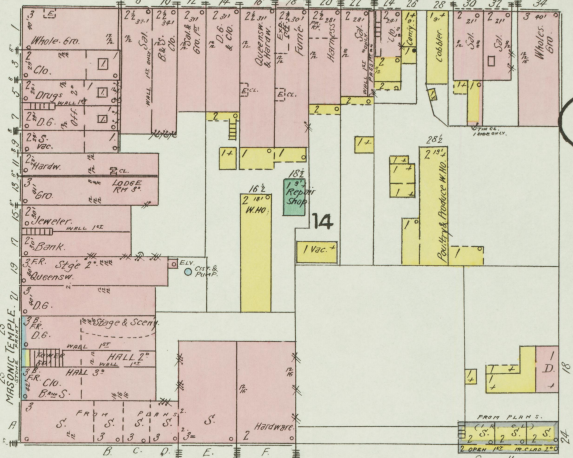
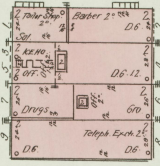
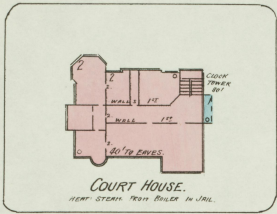
4



N. MAYSVILLE

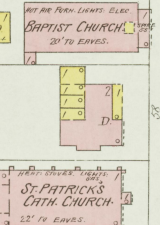
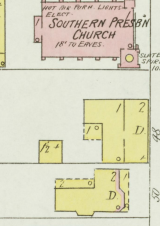
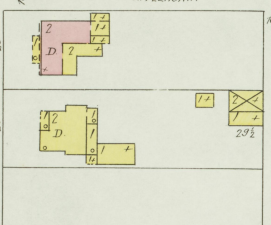
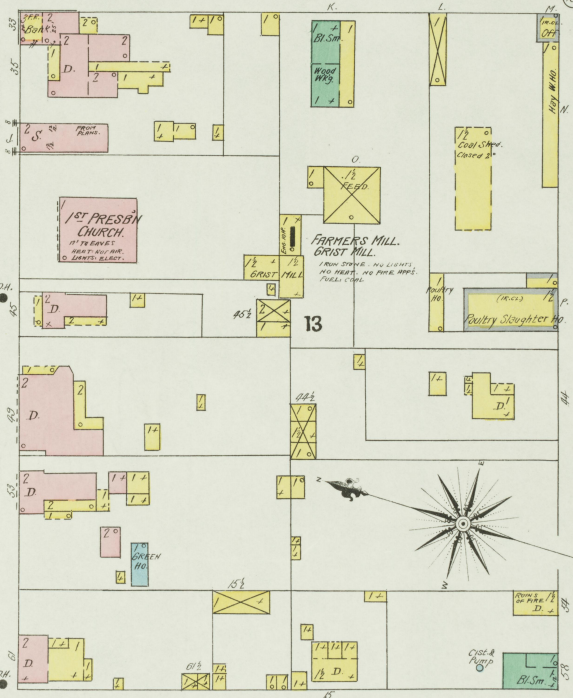
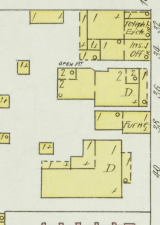
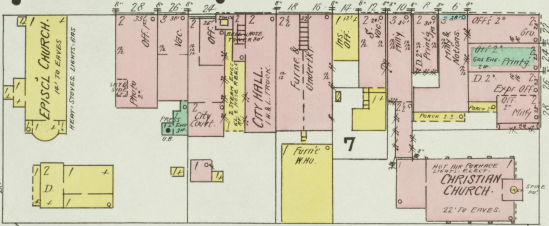
S. MAYSVILLE

Aug. 1901
MT. STERLING
KY.



BROADWAY

BANK



3

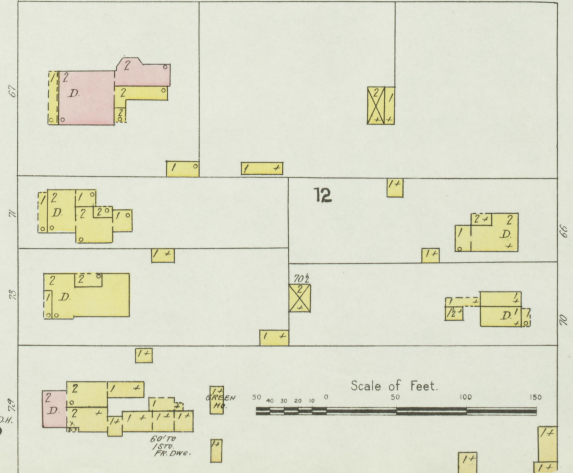
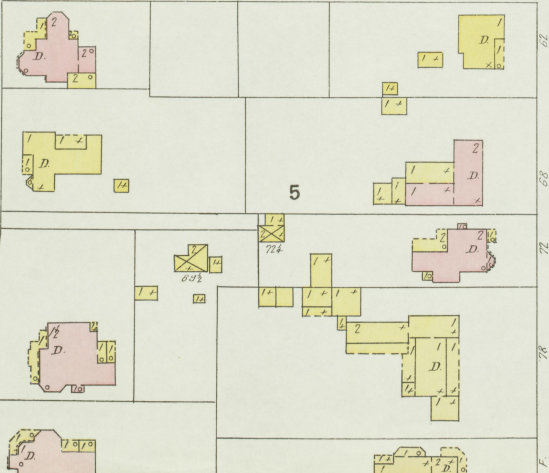
W. MAIN

W. LOCUST

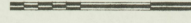
W. HIGH

N. SYCAMORE

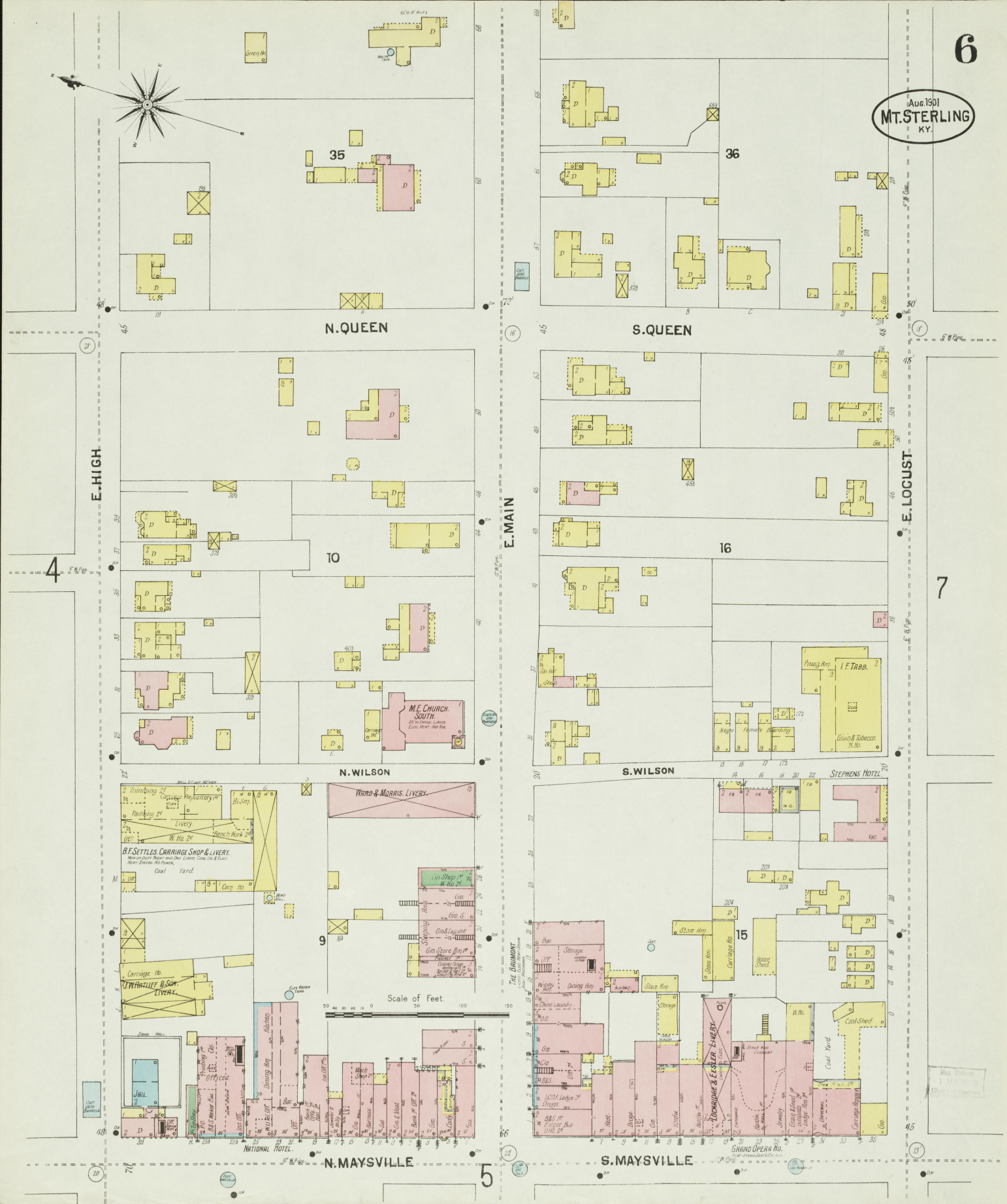
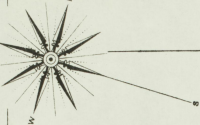
S. SYCAMORE



Scale of Feet



Map Edition
1 JUL 1905
Library of Congress



N. QUEEN

S. QUEEN

E-HIGH

E-MAIN

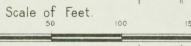
E-LOCUST

N. WILSON

S. WILSON

N. MAYSVILLE

S. MAYSVILLE



WIND & MORRIS LIVERY

B.F. SETTLES CARRIAGE SHOP & LIVERY

WIND & MORRIS LIVERY

WIND & MORRIS LIVERY

WIND & MORRIS LIVERY

WIND & MORRIS LIVERY

WIND & MORRIS LIVERY

WIND & MORRIS LIVERY

WIND & MORRIS LIVERY

WIND & MORRIS LIVERY

WIND & MORRIS LIVERY

WIND & MORRIS LIVERY

WIND & MORRIS LIVERY

WIND & MORRIS LIVERY

WIND & MORRIS LIVERY

WIND & MORRIS LIVERY

WIND & MORRIS LIVERY

STEPHENS HOTEL

STEPHENS HOTEL

STEPHENS HOTEL

STEPHENS HOTEL

STEPHENS HOTEL

STEPHENS HOTEL

STEPHENS HOTEL

STEPHENS HOTEL

STEPHENS HOTEL

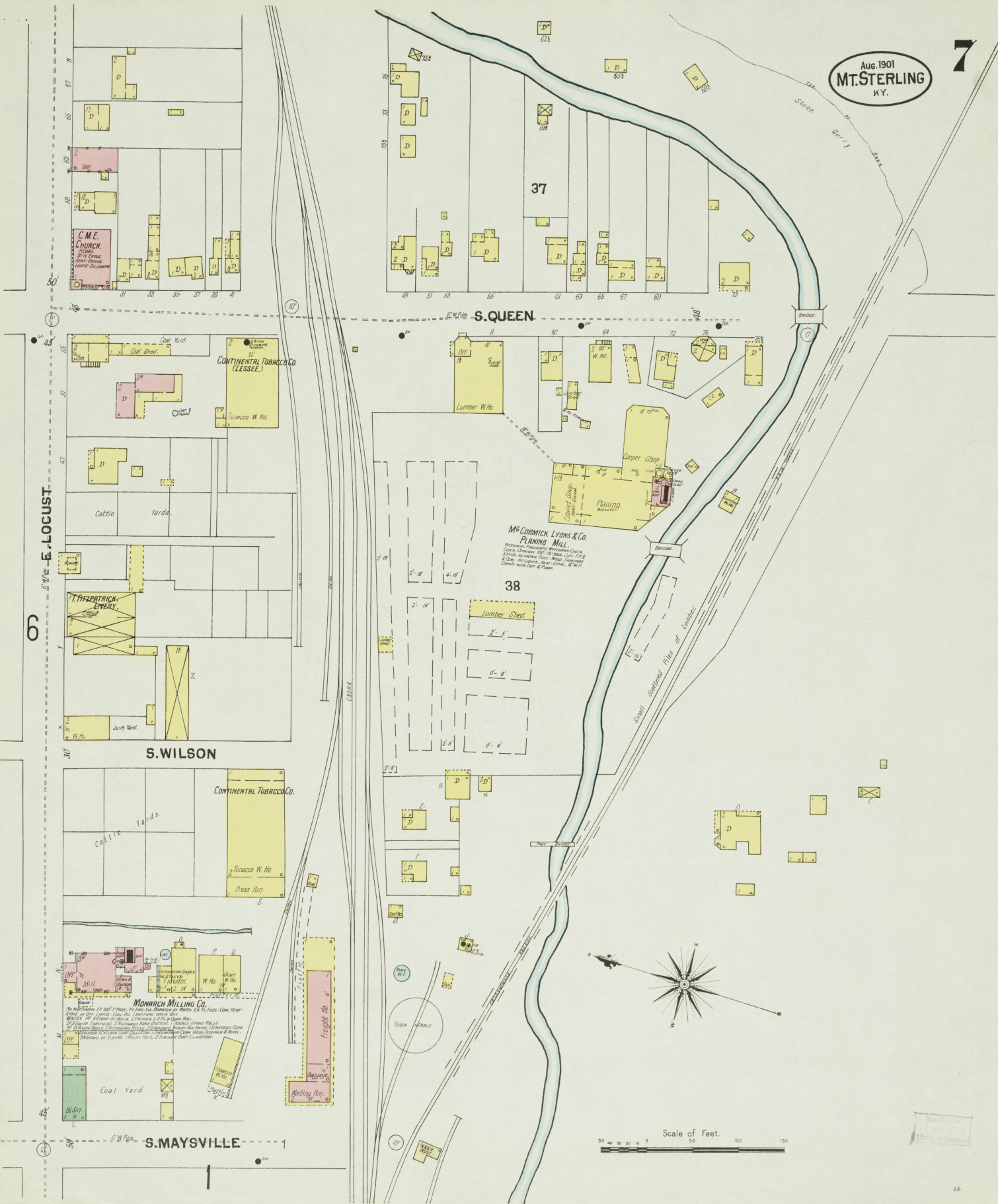
STEPHENS HOTEL

STEPHENS HOTEL

STEPHENS HOTEL

Map Edition
1:100,000
1:250,000
1:500,000

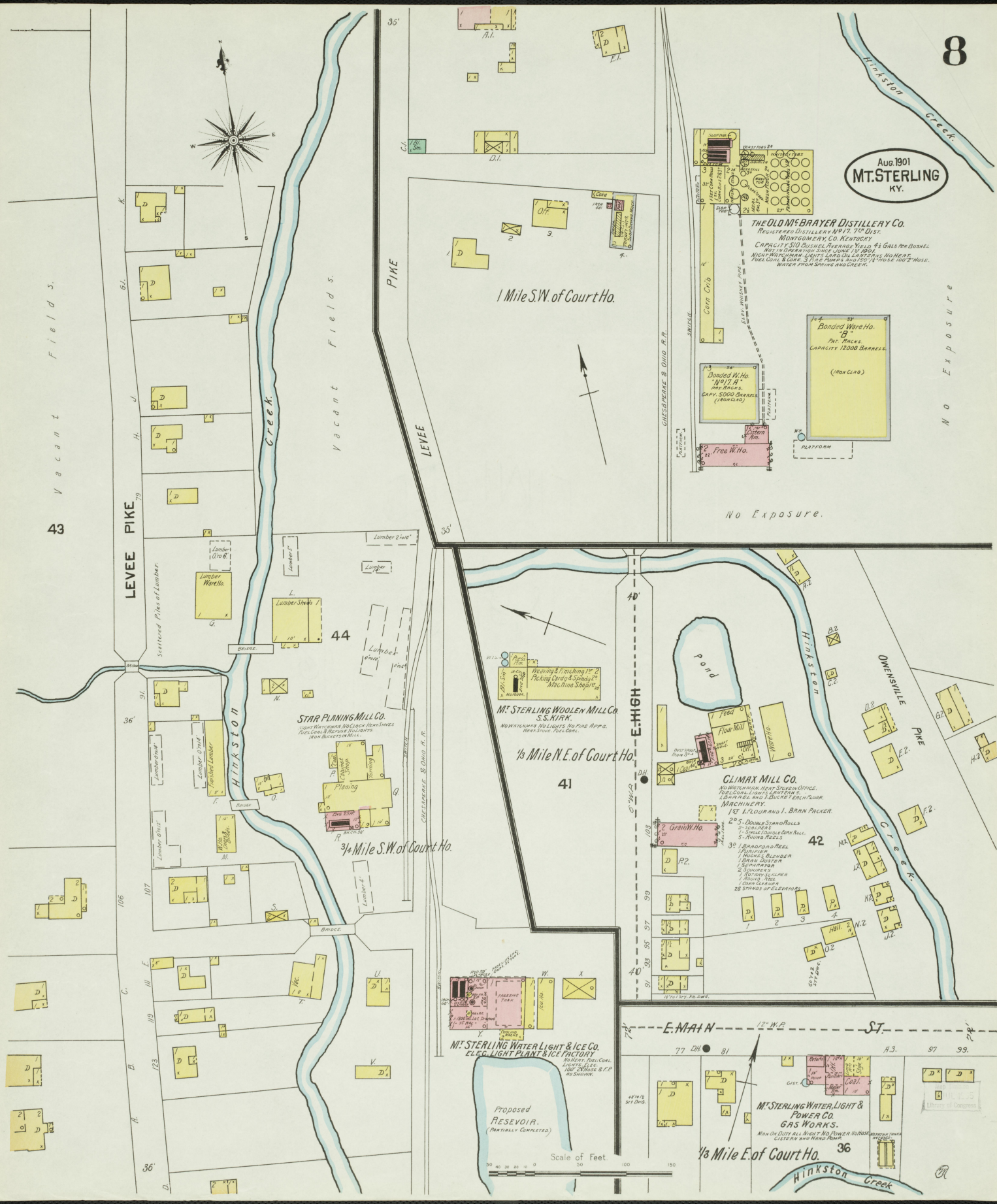
Aug. 1901
MT. STERLING
KY.



Scale of Feet

THE JAMES
ENGINEERING CO.

Aug 1901
MT. STERLING
KY.



Vacant Fields.

43

LEVEE PIKE

LEVEE PIKE

LEVEE PIKE

Vacant Fields.

44

Vacant Fields.

Vacant Fields.

1 Mile S.W. of Court Ho.

1/2 Mile N.E. of Court Ho.

3/4 Mile S.W. of Court Ho.

1/2 Mile E. of Court Ho.

THE OLD McBRAYER DISTILLERY CO.
REGISTERED DISTILLERY No. 17, 75th DIST.
MONTGOMERY CO. KENTUCKY
CAPACITY 500 BUSHELS BLENDED YIELD 4 1/2 GALLONS BUSHEL
NOT IN OPERATION SINCE JUNE 14 1890
NIGHT WATCHMEN LIGHTS ON LANTERNS, NO HEAT,
FUEL OILS & COAL, 3 1/2 HP PUMPS, 100 1/2" HOSE, 100 1/2" HOSE,
WATER FROM SPRING AND CREEK.

Bonded Ware Ho.
No. 10
CAPACITY 12000 BARRELS
(Now Closed)

Bonded W. Ho.
No. 11
No. 12
CAPY 5000 BARRELS
(Now Closed)

Free W. Ho.
No. 13

STAR PLANING MILL CO.
LUMBER PLANING AND FINISHING MACHINES
PLANING AND FINISHING MACHINES
PLANING AND FINISHING MACHINES
PLANING AND FINISHING MACHINES

MT. STERLING WOOLEN MILL CO.
S.S. HARK
MONTGOMERY BOLLING AND FINE APP.
HEAT STEEL, POL. COAL.

CLIMAX MILL CO.
MONTGOMERY HEAT STEEL OFFICE
FOLLOWING LIGHTS, MACHINES,
ELECTRICAL AND BATTERY TENCH FLOOR.
MACHINERY:
125 L. SCURR AND J. BRAN PRCKER
25 1/2 Double Spindle ROLLERS
10 1/2 Single Spindle ROLLERS
5 1/2 AVONDA REELS
125 L. SCURR AND J. BRAN PRCKER
1 HUGHES BLENDER
1 STEAM ENGINE
2 SCREWERS
1 STEAM ROLLER
1 TRUSS AND
1 COAL GRINDER
26 SPINDS OF ELEVATORS

MT. STERLING WATER LIGHT & ICE CO.
ELEC. LIGHT PLANT & ICE FACTORY
LIGHTS, 1100
1000 BARRELS & P.P.
AS SHOWN

MT. STERLING WATER LIGHT & POWER CO.
GAS WORKS.
MAN ON DUTY ALL NIGHT, NO POWER WITHOUT
CISTERN AND HAND PUMP

Proposed RESEVOIR.
(PARTIALLY COMPLETED)

Scale of Feet
0 20 40 60 80 100 120 140 160 180 200

NO EXPOSURE

No Exposure.

E. MAIN ST.

E. HIGH ST.

Hinkston Creek