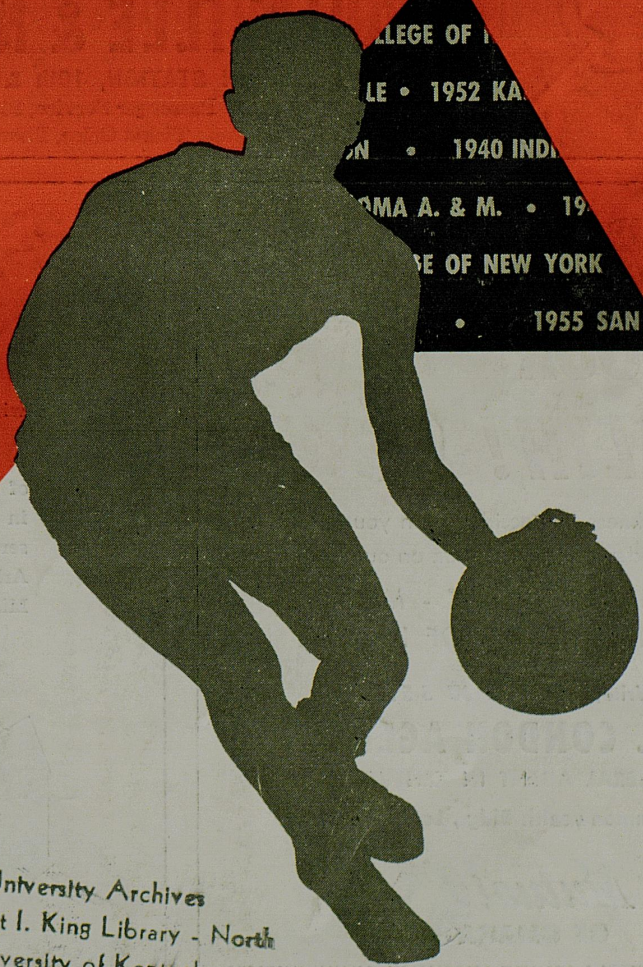


1939 OREGON • 1940 INDIANA • 1941 WISCONSIN • 1942 STANFORD • 1943 WYOMING • 1944 UTAH
 1945 OKLAHOMA A. & M. • 1946 OKLAHOMA A. & M. • 1947 HOLY CROSS • 1948 KENTUCKY • 1949 KENTUCKY
 1950 CITY COLLEGE OF NEW YORK • 1951 KENTUCKY • 1952 KANSAS • 1953 INDIANA • 1954 LA SALLE
 1954 LA SALLE • 1955 SAN FRANCISCO • 1956 SAN FRANCISCO • 1957 NORTH CAROLINA
 1939 OREGON • 1940 INDIANA • 1941 WISCONSIN • 1942 STANFORD • 1943 WYOMING • 1944 UTAH
 1945 OKLAHOMA A. & M. • 1946 OKLAHOMA A. & M. • 1947 HOLY CROSS • 1948 KENTUCKY • 1949 KENTUCKY
 1950 CITY COLLEGE OF NEW YORK • 1951 KENTUCKY • 1952 KANSAS • 1953 INDIANA • 1954 LA SALLE
 1954 LA SALLE • 1955 SAN FRANCISCO • 1956 SAN FRANCISCO • 1957 NORTH CAROLINA

Ncaa

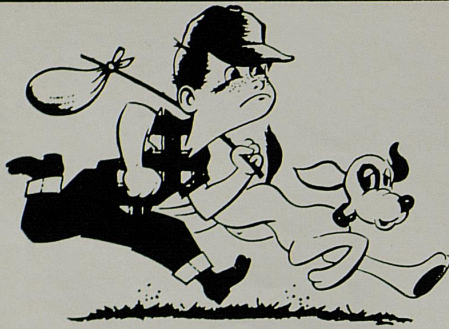
NATIONAL COLLEGIATE BASKETBALL CHAMPIONSHIP



KENTUCKY FAIR AND
 EXPOSITION CENTER
 FREEDOM HALL
 LOUISVILLE, KENTUCKY
 MARCH 21, 22, 1958

University Archives
 Margaret I. King Library - North
 University of Kentucky
 Lexington, Kentucky 40506

50 CENTS



WHEN YOU "Hit the Trail" GO BY RAIL

Start your pleasure-filled trip with the cheerful sound-off of "All Aboard." Enjoy the freedom of train travel—roam about and meet people, or if you prefer, just sit back, relax and take in the wonderful panoramas that are rail travel exclusives!

TO MISSISSIPPI GULF COAST AND NEW ORLEANS

2 trains daily from Louisville

The Humming Bird—leaves Louisville 9:20 PM CST

The Pan-American—leaves Louisville 11:25 AM CST

Deluxe accommodations include club lounge, dining car, bedroom-roomette-section sleepers and reclining seat coaches.

TO EAST AND WEST COASTS OF FLORIDA

every other day

The South Wind—leaves Louisville 3:00 PM CST

Reserved reclining seat coaches, roomettes, bedrooms, club lounge, dining car. Only through coach service to Miami.

Wherever you're going — whenever you go — go relaxed —
Ask your agent to have a Hertz Driv-Ur-Self car awaiting your arrival.
Inquire about the RAIL TRAVEL CREDIT CARD PLAN



The Dear Line



LOUISVILLE & NASHVILLE R. R.

UNION STATION, 10th & BROADWAY, LOUISVILLE

Passenger Service, Phone: JUniper 5-5325

Ticket Office, Phone: JUniper 4-2241

YOUR HEALTH IS YOUR WEALTH!

Don't let sickness and accident ruin your financial security. Today, get information on our plans for:

**HEALTH - ACCIDENT - MEDICAL
HOSPITAL - LOSS OF INCOME**

Write, or Phone JU 5-5131

R. B. CONDON AGENCY

GENERAL AGENT IN KENTUCKY

1126 Commonwealth Bldg., Louisville 2, Ky.



MUTUAL BENEFIT HEALTH & ACCIDENT ASSOCIATION, OMAHA, NEBRASKA

KENTUCKY'S ONLY MUTUAL LEGAL RESERVE LIFE INSURANCE COMPANY

with more than

\$117,000,000.00

of insurance

in force

serving the people of Kentucky, Alabama, Arkansas, Florida, Indiana, Louisiana, Mississippi, Ohio and Tennessee with

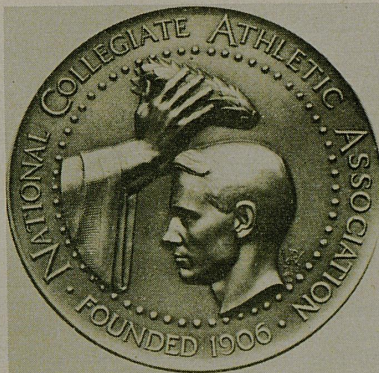
- LIFE
- AND
- GROUP LIFE



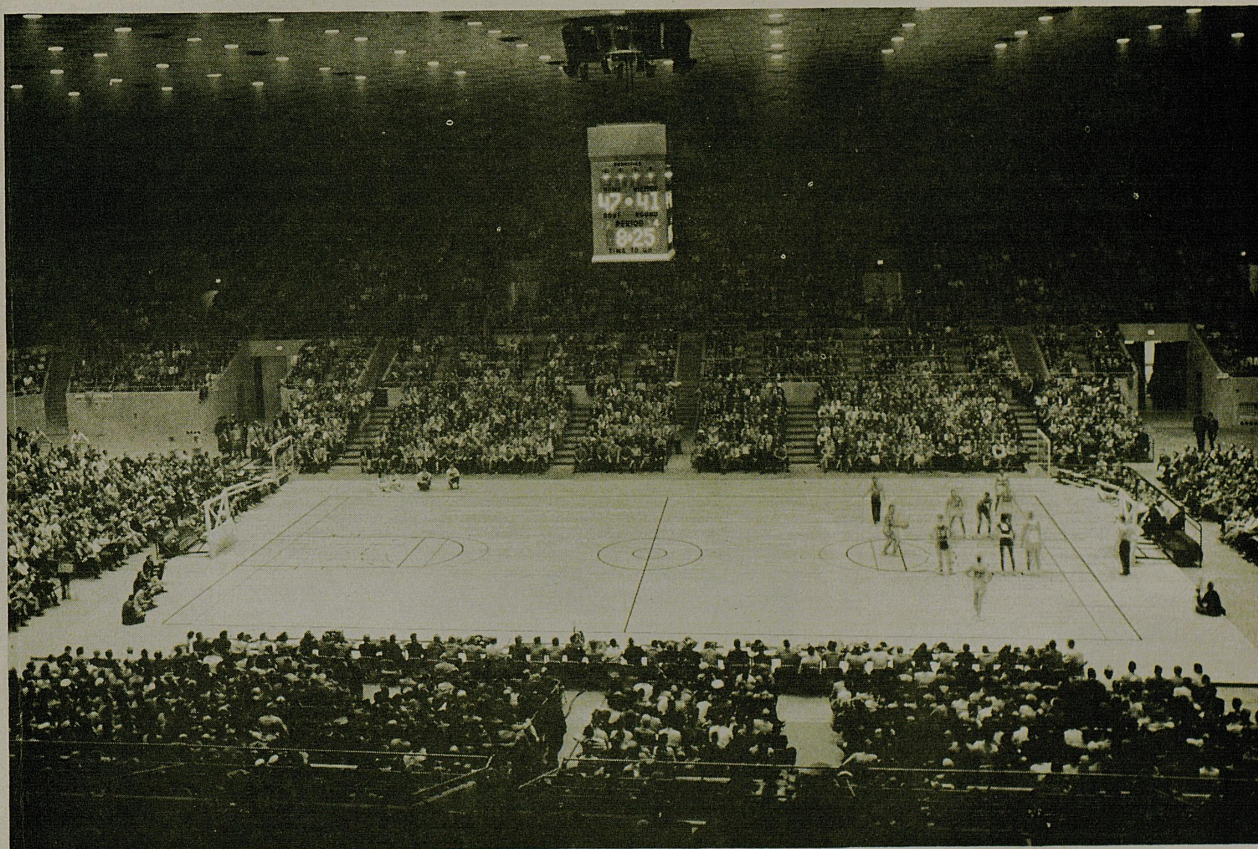
**KENTUCKY HOME MUTUAL
LIFE INSURANCE COMPANY**
KENTUCKY HOME LIFE BLDG., LOUISVILLE 2, KENTUCKY

Twentieth Annual
National Collegiate Basketball Championship

KENTUCKY FAIR AND
EXPOSITION CENTER



MARCH 21 - 22, 1958
LOUISVILLE, KENTUCKY



Louisville, Ky. — Freedom Hall — Kentucky Fair and Exposition Center — Site of 1958 National Collegiate Finals

*Tournament
Schedule*

March 21	7:30 p.m.	Kentucky vs. Temple
	9:30 p.m.	Kansas State vs. Seattle
March 22	7:00 p.m.	Consolation
	9:00 p.m.	National Championship

TOURNAMENT OF CHAMPIONS

THREE teams no strangers to the championship round, headed by Kentucky, the only three-time winner, and one joining such company after four unsuccessful attempts—that's the championship bracket for the 20th annual National Collegiate Basketball Tournament.

Whittled out of a 24-team field including all sections of the country (the original entry included 20 different states), this quartet of regional winners enters the final leg in pursuit of the James W. St. Clair Trophy, emblematic of the National Collegiate Basketball Championship—

EAST CHAMPION — Temple University (26-2), winner of the Middle Atlantic States Athletic Conference. Owner of a 25-game winning streak. Third-place finisher in the 1956 national tournament.

MIDEAST CHAMPION — University of Kentucky (21-6), winner of the Southeastern Conference. Three times national champion, making a record 10th appearance in the tournament.

MIDWEST CHAMPION — Kansas State College (22-3), winner of the Missouri Intercollegiate (Big Eight) Athletic Association. National runner-up to Kentucky in the 1951 finals.

WEST CHAMPION — Seattle University (22-5), an upstart independent led by Elgin Baylor, the nation's

No. 2 scorer. Four times a first-round and regional competitor, but never before a semifinalist.

Under the tournament plan of the National Collegiate Athletic Association, these four were screened by competition involving the entire 24-team field in a series of 20 first round and regional games.

From the time the National Collegiate Championship was inaugurated in 1939 until 1951, only the nation's top eight teams qualified for the national championship. In 1951, this tournament pattern was changed to provide that champions of certain conferences be automatically qualified for the tournament and the remainder of the field be made up of outstanding independents, or "at-large" institutions. Since 1951, the size of the tournament field has been tripled, making it truly a "Tournament of Champions."

Three of the 1958 semifinalists — Temple, Kentucky and Kansas State — jumped directly into regional play and won two games each for semifinals berths, but Seattle was required to hurdle three foes to earn the trip to Louisville.

Three high-scoring all-Americans grace the lineups of the semifinalists, headed by Seattle's Elgin Baylor, the nation's No. 2 scorer with a 33.1 average. Others are: Kansas State's Bob Boozer, averaging 20.4 points per game, and Guy Rodgers of Temple, with a 20.1 standard.

UNIVERSITY OF NORTH CAROLINA

1957 NATIONAL COLLEGIATE CHAMPIONS

Front Row (left to right): Bob Cunningham, Tommy Kearns, Tony Radavich and Coach McGuire. Back Row (left to right): Pete Brennan, Joe Quigg and Lennie Rosenbluth.



THE CHAMPIONSHIP TRAIL

MARYLAND 86
at NEW YORK
BOSTON COLLEGE 63

MARYLAND 67
at CHARLOTTE
TEMPLE 71

TEMPLE 69

MANHATTAN 89
at NEW YORK
WEST VIRGINIA 84

MANHATTAN 62
at CHARLOTTE
DARTMOUTH 79

at CHARLOTTE
TEMPLE
DARTMOUTH 50

DARTMOUTH 75
at NEW YORK
CONNECTICUT 64

DARTMOUTH 79

at LOUISVILLE

MIAMI of OHIO 82
at EVANSTON
PITTSBURGH 77

KENTUCKY 94
at LEXINGTON
MIAMI of OHIO 70

KENTUCKY 89
at LEXINGTON

KENTUCKY

NOTRE DAME 94
at EVANSTON
TENNESSEE TECH 61

INDIANA 87
at LEXINGTON
NOTRE DAME 94

NOTRE DAME 56

THIRD PLACE NATIONAL

at LOUISVILLE

NATIONAL CHAMPION

OKLAHOMA STATE 59
at STILLWATER
LOYOLA (LA) 42

ARKANSAS 40
at LAWRENCE
OKLAHOMA STATE 65

OKLAHOMA STATE 57
at LAWRENCE

KANSAS STATE

KANSAS STATE 83
at LAWRENCE
CINCINNATI 80

KANSAS STATE 83
at LAWRENCE
CINCINNATI 80

KANSAS STATE 69

at LOUISVILLE

SEATTLE 88
at BERKELEY
WYOMING 51

SAN FRANCISCO 67
at SAN FRANCISCO
SEATTLE 69

SEATTLE 66
at SAN FRANCISCO

SEATTLE

IDAHO STATE 72
at BERKELEY
ARIZONA STATE 65

CALIFORNIA 54
at SAN FRANCISCO
IDAHO STATE 43

CALIFORNIA 62

EASTERN CONSOLATIONS
MARYLAND 59, MANHATTAN 55
INDIANA 98, MIAMI (Ohio) 91

WESTERN CONSOLATIONS
CINCINNATI 97, ARKANSAS 62
SAN FRANCISCO 57, IDAHO STATE 51

NCAA Serves as Athletic Voice For Colleges and Universities

IMPORTANT as the forward pass and the platoon system have been to the evolution of football, neither has influenced the over-all development of intercollegiate athletics as did the flying wedge at the turn of the century.

It was the flying wedge, football's major offense in 1905, that spurred the formulation of the National Collegiate Athletic Association 52 years ago this month.

The rugged nature of football, typified by the mass formations and gang tackling, was causing too many injuries and deaths. Many institutions discontinued the sport. Others advocated that it be abolished from the intercollegiate program.

Public clamor rose to such crescendo that President Theodore Roosevelt summoned athletic leaders to two White House conferences to urge reformation of the game and warned an executive edict might be forthcoming if his request passed unheeded.

The NCAA evolved from a meeting of 13 colleges and universities called in early December, 1905, to bring about reforms in the playing rules. At a second meeting December 28 in New York, the Intercollegiate Athletic Association was founded, and was officially constituted March 31, 1906. The NCAA took its present name in 1910.

From its original function as a discussion society which had such business as the drafting of rules, conduct of national championships and related matters, the NCAA has become "an organization devoted to the sound administration of intercollegiate athletics in all of its phases."

Whereas early member colleges and universities pondered primarily over football and the flying wedge, today's NCAA members consider any athletic problem which has spread across regional lines and has become national in character.

This change in the NCAA's scope was effected shortly after World War II when the Association's membership voted itself legislative and executive powers. The

increased role the NCAA was to play in intercollegiate athletics was indicated by the immediate attempt of the colleges and universities to resolve enforcement and television problems through the NCAA.

Subjected to as merciless a scrutiny as that imposed by the flying wedge nearly 50 years previous, intercollegiate athletics attempted to solve its No. 1 problem through an abortive enforcement effort called the "Sanity Code." Though this effort (1948-50) was unsuccessful, the NCAA re-entered the enforcement business in 1952.

As early as 1949, NCAA member institutions felt television affected their football attendance and appropriated money to conduct a survey; since 1951, the colleges and universities have overwhelmingly endorsed limited live television of their games.

Though television and enforcement have been most prominent, the Association's 508 colleges and universities, conferences and coaches' organizations carry on many diversified activities through the NCAA. For example, the NCAA—

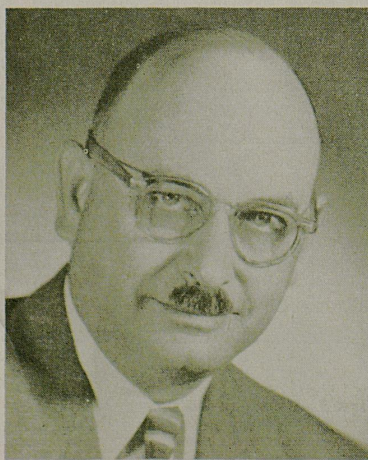
... conducts 15 National Collegiate Championship events—baseball, basketball (college and university divisions), boxing, cross-country (college and university), fencing, golf, gymnastics, ice hockey, skiing, swimming, tennis, track and field, and wrestling. The National Collegiate series dates back to 1883 and over this 74-year span more than 32,500 student-athletes have competed in these events, with 1,893 earning the coveted title, "National Collegiate Champion."

... maintains 13 rules committees to "formulate, copy-right, and publish rules of play for the government of collegiate sports." Members of these committees are selected by representatives of member institutions at the NCAA's annual Convention each January.

... publishes annual "Official Guides" in nine sports through the National Collegiate Athletic Bureau. The

Left to right: NCAA President Frank N. Gardner, Drake University; NCAA Secretary-Treasurer Edwin D. Mouzon,

Southern Methodist University, and NCAA Executive Director Walter Byers, Kansas City, Missouri.



1958 NCAA ORGANIZATION

President
Frank N. Gardner, Drake University

Executive Director
Walter Byers, Kansas City, Missouri

Secretary-Treasurer
Edwin D. Mouzon, Jr.
Southern Methodist University

Council

President and Secretary-Treasurer
Vice Presidents
District 1 — Warren P. McGuirk, University of Massachusetts
District 2 — Percy L. Sadler, Lehigh University
District 3 — O. K. Cornwell, University of North Carolina
District 4 — Harold S. Wood, Beloit College
District 5 — Warren O. Thompson, University of Colorado
District 6 — Henry B. Hardt, Texas Christian University
District 7 — H. J. Dorricott, Western State College of Colorado
District 8 — Rixford K. Snyder, Stanford University
At-large — Theodore Harder, Santa Barbara College
Members-at-large
H. O. Crisler, University of Michigan
Jeremiah Ford II, University of Pennsylvania

Wilbur V. Hubbard, San Jose State College
DeLaney Kiphuth, Yale University
D. S. McAlister, the Citadel
F. L. Stovall, University of Houston
E. E. Wieman, University of Denver

Executive Committee

President and Secretary-Treasurer
Vice-President-at-Large
Thomas D. Balles, Harvard University
Jefferson J. Coleman, University of Alabama
H. J. Dorricott, Western State College of Colorado
Ralph Furey, Columbia University
Roy S. Keene, Oregon State College
Richard C. Larkins, Ohio State University
George D. Small, University of Tulsa

University Basketball Tournament Committee

A. C. Lonborg, University of Kansas, Chairman
Lewis P. Andreas, Syracuse University
Robert N. Brown, West Virginia University
Roy S. Keene, Oregon State College
Everett F. Shelton, University of Wyoming

NCAB also collects, compiles and distributes to the press and college officials the official statistics of college football, basketball and track, and generally performs other functions commonly associated with a record-keeping agency.

... conducts studies as a means of developing solutions to athletic problems, such as the recent surveys on television, post-season events, length and time of playing and practice seasons, etc.

... participates in the U. S. Olympic and Pan American movements as the administrative agency for the colleges in fund-raising, sports organization and the providing of coaches and athletes for United States teams.

... enacts legislation to deal with athletic problems when they spread across regional lines and member institutions concur that national action is needed.

... administers a group insurance program whereby member colleges can provide catastrophe medical coverage

for student-athletes injured in practice, play or transport. More than 40,000 students are enrolled annually in this program.

... maintains a central clearing and counseling agency in the field of college athletic administration.

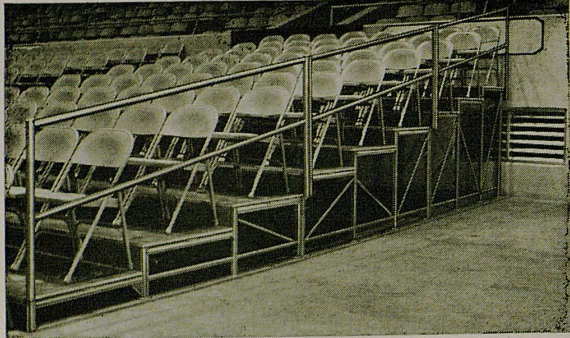
... provides financial and other assistance to various groups interested in the promotion and encouragement of intercollegiate and intramural athletics; actively assists the various national coaches associations in projects which provide better teaching, better competition and sounder administration.

... provides a large film library, covering play in national meets and tournaments. This library of more than 200 titles includes films on baseball, basketball, boxing, gymnastics, ice hockey, swimming, track and field, and wrestling.

In effect, the NCAA is the colleges and universities of the nation speaking of and acting on athletic matters at the national level.

Left to right: A. C. (Dutch) Lonborg, University of Kansas, chairman of the NCAA University Basketball Tournament Committee, and Bill Henry, Director of Promotion, Kentucky Fair and Exposition Center, tournament manager.





Safway Step-type risers in the Louisville Coliseum

Enjoy the Viewing More on Safway Portable Chair Risers

Safway ramp or step-type risers give your chairs safe support—comfortable leg room—and good sight lines to the floor. And you can quickly change the setup for other spectator events.

Learn how Safway risers can make seating more comfortable—and profitable—in your gymnasium, field house or auditorium.

Write for Bulletin 17X for more information.

SAFWAY STEEL PRODUCTS, INC.

MILWAUKEE 13, WISCONSIN

AUDUBON BAR & LOUNGE

3132-34 Preston Hwy. — Phone MElose 7-9433

DEL PARK BAR

3202 Del Park Terrace — Phone SPring 8-9201

Thomas Industries INC.

410 So. Third Street
Louisville 2, Kentucky

Manufacturers of:

- MOE LIGHT AND STAR LIGHT HOME LIGHTING
- SPRAYIT PAINT SPRAYING EQUIPMENT
- WRIGHT POWER SAWS
- IDEAL BATHROOM CABINETS
- RADIANT OPAL GLASS

Thomas Industries products made in Kentucky at Hopkinsville and Princeton

BILL'S BAR

WHERE ALL
SPORTSMEN
MEET

3001 - 3003 Seventh Street

The MATTINGLYS

WHOLESALE

Souvenirs and Novelties

1117 LOGAN STREET

MElose 4-1981

SAMUEL'S S & S

AUTO SALES

CLEANEST USED CARS

IN TOWN

Winkler & Algonquin Pkwy.

MElose 7-4616

Your Late Stop For . . . Genuine Italian

PIZZA

5:00 P.M. to 2:00 A.M. — Fri. & Sat. to 4:00 A.M.
OPEN 6 NIGHTS A WEEK — CLOSED TUESDAY
Italian And American Dinners Served At All Hours

HIGHLAND ITALIAN RESTAURANT

1543 Bardstow Road

Phone Highland 4864

TELEVISION - AIR CONDITIONING

PAT FRANKLIN FURNITURE AND APPLIANCES

4421 So. 3rd - 3rd and Adair

EMerson 8-2531

Open 8 a.m. Till 9 p.m.

EDW. GUTGSELL, Co-Owner

Alumni Valley High

LIBERTY ENGINEERING

& MFG. CO., Inc.

Air Conditioning

Dust Collecting

Plastic Coatings

1450 So. 15th St.

1417 W. Ormsby

WELDERS SUPPLY COMPANY

AUTHORIZED DEALER

LOUIS W. WRIGHT

Welding & Cutting Gases, Apparatus & Supplies

Arc Welders - National Carbide - Ohio Therapy & Medical Gases

1470-72 S. 12th St.

MElose 7-4771

BUD & T. N. THOMPSON PRODUCE

WHOLESALE FRUITS & VEGETABLES

240 EAST LIBERTY

PHONE JU 4-3119

For: SHOP AT GATEWAY SUPER MARKETS

OUTSTANDING FOOD VALUES

ECONOMICAL PRICES

EAGLE STAMPS

- SHELBYVILLE RD. PLAZA
- 1414 STATE. RT. #62
Jeffersonville, Indiana

- SHAKER HEIGHTS SHOPPING CENTER
Pleasure Ridge Park
- HAZELWOOD SHOPPING CENTER
4148 Taylor Boulevard

FROM THE RECORD FILES

Championship Results

Year	Site	Champion		Runner-Up	Final Score
1939	Northwestern	Oregon	defeated	Ohio State	46 - 33
1940	Kansas City, Mo.	Indiana	defeated	Kansas	60 - 42
1941	Kansas City, Mo.	Wisconsin	defeated	Washington State	39 - 34
1942	Kansas City, Mo.	Stanford	defeated	Dartmouth	53 - 38
1943	New York City	Wyoming	defeated	Georgetown	46 - 34
1944	New York City	Utah	defeated	Dartmouth	53 - 38
1945	New York City	Oklahoma A&M	defeated	N. Y. U.	49 - 45
1946	New York City	Oklahoma A&M	defeated	North Carolina	43 - 40
1947	New York City	Holy Cross	defeated	Oklahoma	58 - 47
1948	New York City	Kentucky	defeated	Baylor	58 - 42
1949	Washington	Kentucky	defeated	Oklahoma A&M	46 - 36
1950	New York City	C.C.N.Y.	defeated	Bradley	71 - 68
1951	Minnesota	Kentucky	defeated	Kansas State	68 - 58
1952	Washington	Kansas	defeated	St. John's	80 - 63
1953	Kansas City, Mo.	Indiana	defeated	Kansas	69 - 68
1954	Kansas City, Mo.	LaSalle	defeated	Bradley	92 - 76
1955	Kansas City, Mo.	San Francisco	defeated	LaSalle	77 - 63
1956	Northwestern	San Francisco	defeated	Iowa	83 - 71
1957	Kansas City, Mo.	North Carolina	defeated	Kansas	54 - 53

Tournament Scoring Records

Individual

Total Points, 5-Game Series	Hal Lear, Temple, 1956	160
Total Points, 4-Game Series	Clyde Lovellette, Kansas, 1952	141
Points, Single Game	Oscar Robertson, Cincinnati, 1958	56
Total Field Goals, Series	Oscar Robertson, Cincinnati, 1958	21
Field Goals, Single Game	Bob Houbregs, Washington, 1953	20
Total Free Throws, Series	Bob Carney, Bradley, 1954	55
Free Throws, Single Game	Bob Carney, Bradley, 1954	23

Team

Total Points, 5-Game Series	LaSalle, 1955	406
Total Points, 4-Game Series	Iowa, 1956	340
Most Points, Championship Game	LaSalle, 1954	92
Points, Single Game	Utah, 1955	108
Both Team Points, Single Game	Morehead State-Marshall, 1956	199
Total Field Goals, 5-Game Series	LaSalle, 1955	148
Total Field Goals, 4-Game Series	San Francisco, 1956	136
Field Goals, Single Game	Utah, 1955	42
Total Free Throws, 5-Game Series	Bradley, 1954	146
Total Free Throws, 4-Game Series	Indiana, 1953	108
Free Throws, Single Game	Seattle U., 1955	39
Personal Fouls, Single Game	UCLA-Seattle U., 1956 and Iowa-Morehead State, 1956	35

High Scorer, Year-by-Year

Year	Player	Team	Points	Games
1939	Jim Hull	Ohio State	58	3
1940	Howard Engleman	Kansas	39	3
1941	John Adams	Arkansas	48	2
1942	Jim Pollard	Stanford	48	3
1943	Milo Komenich	Wyoming	48	3
1944	Aud Brindley	Dartmouth	52	3
1945	Bob Kurland	Oklahoma A&M	65	3
1946	Bob Kurland	Oklahoma A&M	72	3
1947	George Kaftan	Holy Cross	63	3
1948	Alex Groza	Kentucky	54	3
1949	Alex Groza	Kentucky	82	3
1950	Sam Ranzino	North Carolina State	75	3
1951	Don Sunderlage	Illinois	83	4
1952	Clyde Lovellette	Kansas	141	4
1953	Bob Houbregs	Washington	139	4
1954	Tom Gola	LaSalle	114	5
1955	Bill Russell	San Francisco	118	5
1956	Hal Lear	Temple	160	5
1957	Len Rosenbluth	North Carolina	140	5

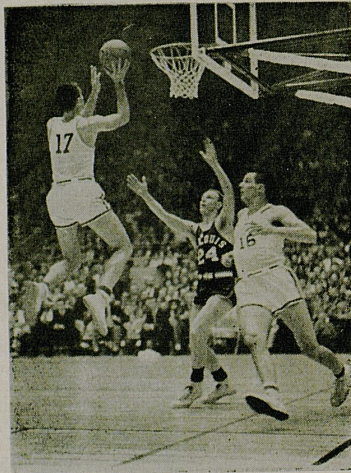
Pro - Basketball At It's Best

NATIONAL BASKETBALL ASSOCIATION

Proudly presents

The East-West Pro All-Star Game

Friday, April 11, 8:30 p. m.



ADMISSION \$3.00 - \$2.00

Kentucky Fair and Exposition Center

P.O. Box 67, Shelby Street Station

EMerson 6-9592

Louisville 17, Kentucky

—Order Tickets Now At—

GAY'S JEWELRY STORE — 4th & Jefferson

LEVY BROS. — 3rd & Market

SHACKLETON PIANO CO. — 621 South Fourth

MEET THE COACHES

Tex Winter — Kansas State

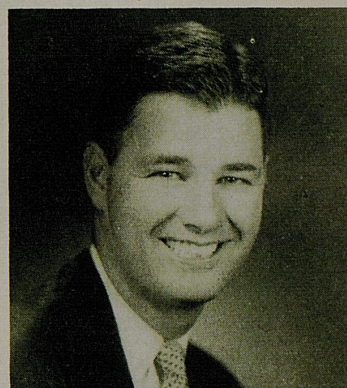
AT 36, fundamentals-stressing Tex Winter of Kansas State is a veteran of the coaching profession . . . Emphasizing ballhandling, shooting and playmaking for weeks before he turns his team loose in scrimmage, Winter is concluding his seventh season as a head basketball coach at a major institution.

This—his fifth at Kansas State—has been his best with a 22-3 record . . . It's one that glitters all the more when one considers that Tex and his Kansas Staters had to beat out a Kansas led by seven-foot Wilt "The Stilt" Chamberlain for the Big Seven Conference championship.

Before taking over at Kansas State, Winter coached Marquette University for two seasons . . . At K-State, he has a record of 76 victories against 39 losses.

Winter played college basketball at Compton (Cal.) Junior College, Oregon State and, after Navy duty, at University of Southern California.

At U.S.C., Tex was named the school's "Most Inspirational Athlete" and doubled in track as a star pole-vaulter.



Adolph Rupp — Kentucky

A COLLECTOR of trophies in basketball and blue ribbons in pure-bred cattle raising, fabled Adolph Frederick "Der Baron" Rupp sends one of his traditionally triumphant Kentucky teams after a fourth national championship . . . A master of the anecdote who is oft quoted, story-telling Rupp has matched a fabulously successful coaching career with one as a breeder of one of the finest white-faced Hereford herds in the South.

Basketball-wise, Der Baron's typical fast-breaking and defensively keen Kentucky teams have won 582 games and lost 103 for a hefty 85 per cent victory percent . . . In compiling this rather awesome record in 28 years at Kentucky, Rupp has coached the Wildcats to 19 Southeastern Conference titles, a record three National championships, to one National Invitation Tournament crown, to four Sugar Bowl titles and to three University of Kentucky Invitation Tournament championships.

Named in 1946 to the Basketball Hall of Fame of the Helms Athletic Foundation he was voted one of the nation's top 10 Shriners in 1950 . . . Sending his team to a 21-6 record this season, Rupp won the national titles in 1948, 1949 and 1951.



John Castellani — Seattle

A FIERY personality who is described as having the thespian qualities of an Adolph Rupp, a Phog Allen and a Doc Carlson, colorful John Louis Castellani assumed his first head coaching job at a major college institution, Seattle, two years ago . . . His success has been on the fantastic side.

This season, the Seattle Chieftains have forged their way into the National Collegiate championships behind a 22-5 record . . . The previous season Castellani guided Seattle to a 24-3 record . . . Thus, for his two seasons as a major college coach Castellani has compiled a record of 46 victories against 8 losses.

A 5-9, 175-pound bachelor who served with the Navy in the South Pacific and the Philippines during World War II, Castellani is a product of Notre Dame . . . There, he served as freshman coach during the 1950-1951 and 1951-1952 seasons and as assistant coach from 1952 through 1956, his principal duty being head scout.



Harry Litwack — Temple

BUSY and versatile Harry Litwack follows a career of stardom as a player with one of equally glittering success in the coaching ranks . . . Coach of the Temple Owls for the past six seasons, he was a standout Owl cager from 1926-through-1929 and later in the pro ranks, where he also coached the Philadelphia SPHAS.

A success in anything he does, Litwack sends a Temple team with a 26-2 record into a post-season tournament for the third successive season . . . His biggest and most faithful boosters, he says proudly, are his wife Estelle and daughters Lois and Shelley.

Carrying a 7-2 record into their third NCAA Tournament appearance, Temple has only a part-time claim on the services of Litwack . . . For Harry also is (1) a physical education instructor in the Philadelphia Public School system and (2) part owner of a summer camp in the Pocono Mountains.

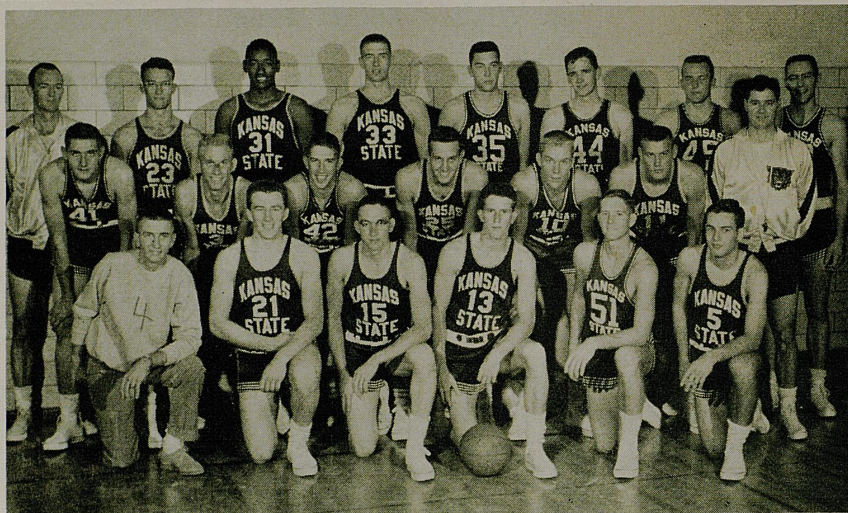
In his six seasons at Temple, Litwack has produced a 115-47 record, this being 73-15 during the era of All-American guard Guy Rodgers.



KANSAS STATE WILDCATS

KANSAS STATE COLLEGE

Location: Manhattan, Kansas
 Enrollment: 6,800
 President: James A. McCain
 Ath. Dir.: H. B. (Bebe) Lee
 Coach: Tex Winter
 Assistant: Howard Shannon
 Conference: Big Eight
 Colors: Purple and White
 Nickname: Wildcats



Back row: Howie Shannon, Freshman Coach Steve Douglas, Bob Boozer, Jack Parr, Wally Frank, Howard Rice, Larry Fischer, Bill Laude. Middle row: Glen Long, Dean Plagge, Bob Graham, Hayden Abbott, Bob Merten, Roy DeWitz, Coach Tex Winter. Bottom row: John Stow, Manager, Don Matuszak, Don Richards, Sonny Ballard, Jim Holwerda, Bill Euthridge.

BEFORE the 1957-1958 season began, most people were ready to wrap up the Big Seven Conference Championship and send it by parcel post to the University of Kansas, led by 7-foot Wilt "The Stilt" Chamberlain. But Kansas State wasn't ready to lick the stamps for postage. Instead, it intercepted delivery for itself.

Now 22-3 for the season—it was 20-3 for the regular season and 10-2 in the conference—Kansas State makes its fourth National Collegiate tournament appearance. The Wildcats are 7-4 in tournament competition.

In winning the Big Seven Crown for Kansas State for the fifth time since 1947, Coach Tex Winter early in the season sorted out the top six players, labeled them his six "regulars" and leaned on them through all games.

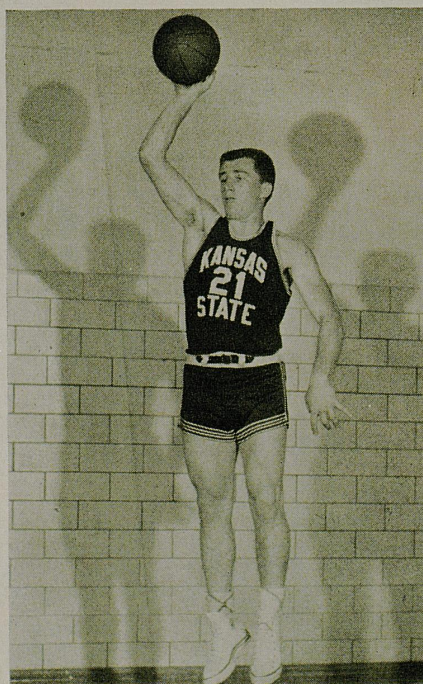
The men: 6-9 senior center Jack Parr, 6-8 junior forward Bob Boozer, 6-3 senior forward Hayden Abbott, 6-3 senior guard Roy DeWitz, 6-foot junior guard Don Matuszak, and 6-8 forward-center Wally Frank.

Thus, this is a team with exceptional height, experience and, of course, outstanding ability. Moreover, this is a team of balanced scoring, although the big men set the pace—Boozer with a 20-point-per-game average and Parr with 14-plus.

Kansas State's power is attested to by the formidable schedule it has played. Outside the conference, the Wildcats met and conquered Indiana, Purdue, Iowa and Minnesota of the Big 10, Arkansas of the Southwest Conference and California of the Pacific Coast Conference. Indiana, Arkansas and California won their conference titles.

Highlight of the season was, according to Coach Winter, K-State's 79-75 conquest in a double overtime over Kansas on the Jayhawks' home floor. Although Kansas came back to win the season's finale 61-44 at Manhattan, the Wildcats already had the conference championship tucked away.

Although as a team K-State never registered among the nation's leaders in any important category of game statistics, the Wildcats continued to win. Coach Winter attributed this to team balance.



Team captain and take-charge guy, six-foot junior guard Don Matuszak (pronounced Ma-TOOS-sac) is averaging 7.3 points. Excels in playmaking, passing-off, but can hurt in the clutch in scoring.

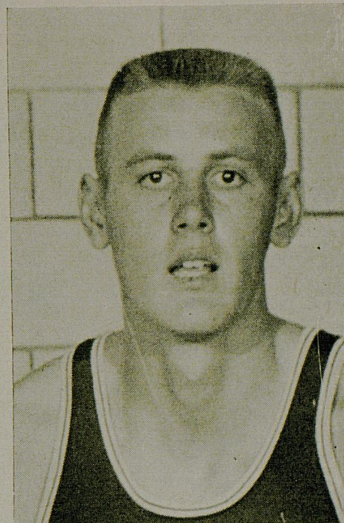
SEASON'S RECORD

Won 22 — Lost 3

Kansas State	76	Texas Western	31
Kansas State	66	Indiana	61
Kansas State	79	Purdue	73
Kansas State	86	Iowa	69
Kansas State	63	Arkansas	48
Kansas State	58	California	44
Kansas State	70	Washington	63
Kansas State	60	Missouri	51
Kansas State	88	Nebraska	57
*Kansas State	65	Kansas ##	79
Kansas State	72	Minnesota	71
Kansas State	74	Nebraska	59
Kansas State	64	Oklahoma	60
Kansas State	64	Iowa State	54
Kansas State	83	Colorado	54
Kansas State	79	Kansas	75
Kansas State	77	Iowa State	70
Kansas State	68	Colorado	62
Kansas State	82	Missouri	61
Kansas State	68	Oklahoma	51
Kansas State	86	Missouri	75
*Kansas State	48	Nebraska	55
*Kansas State	44	Kansas	61
Kansas State	83	Cincinnati #	80
Kansas State	69	Oklahoma State	57

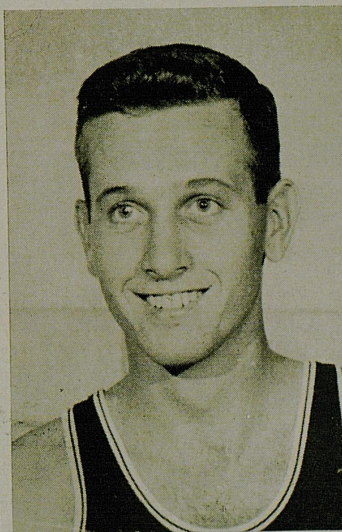
* Losses

Overtime



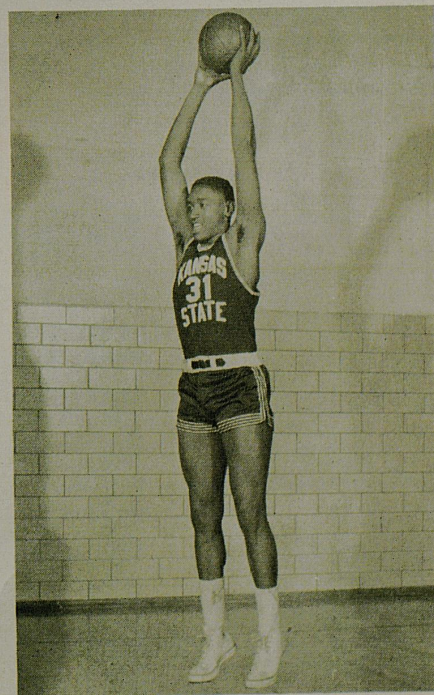
Roy DeWitz is the real hustle guy of the Wildcats. The 6-3 senior, averaging 8.2, is a clever dribbler and ballhandler, was voted "most inspirational player" by his mates last season.

Wheelhorse of the Wildcats is 6-9 senior center Jack Parr, named All-American by the Helms Foundation as a junior. Averaging 14.3 points, has hauled down 241 rebounds, and shines as a feed-off artist.



Often called K-State's most under-rated player, 6-3 senior forward Haydon Abbott is a pre-med student. Averaging 7.7 points, is a speed merchant on the fast break.

All-American Bob Boozer is a 6-8 All-American forward averaging 20.4 points. Also leads the Cats in rebounds with 265. A commercial art student, he has just about every shot in the book, is agile, quick for a big man.





Ancient Anderson Hall houses administration offices at Kansas State. The ivy clad building was constructed around 1863, houses a large bell which tolls students to classes.

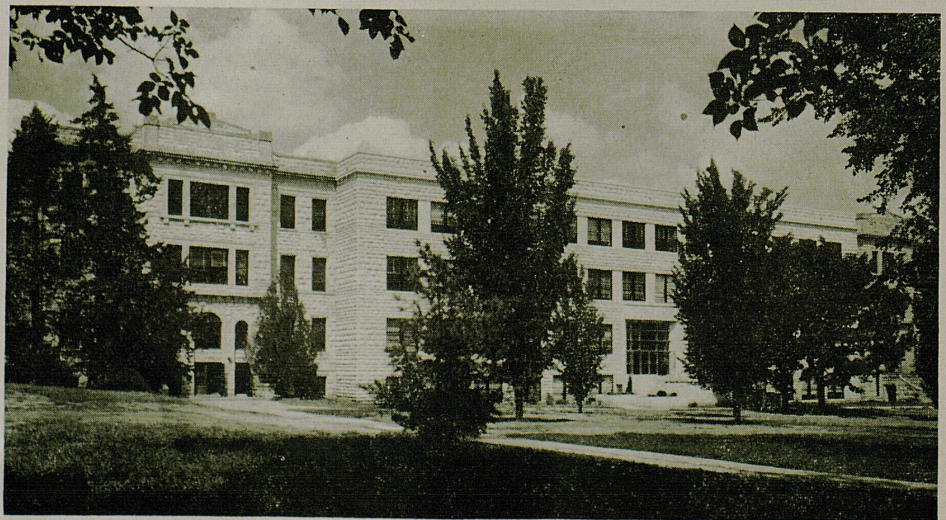


JAMES A. MCCAIN
President



H. B. (BEBE) LEE
Athletic Director

Waters Hall, recently completed although the first wing went up in 1914, is headquarters for the K-State school of agriculture.



GUARANTEED
USED CARS

Traded In On The All-New
'58 CHEVROLET

Montgomery
Chevrolet Corner

2nd & Liberty JUniper 4-1111

NETTER PRODUCE CO.

WHOLESALE FRUITS & VEGETABLES

250 East Liberty Street Phone JUniper 3-3458

100 UNITS
STANDIFORD
MOTEL

LOUISVILLE'S NEWEST AND FINEST WITH
COFFEE SHOP -- COCKTAIL LOUNGE

ACROSS FROM
KENTUCKY FAIR & EXPOSITION CENTER

Compliments

KASTAN & CO.
Incorporated

Compliments

Mr. & Mrs. Edward A.
HASENOUR

REDDY
ELECTRIC Co., Inc.

Rewiring Specialists
Pioneers in Electric Heat

2018 Frankfort Ave. TWinbrook 5-5481

Serving Louisville Business
For 109 Years

Schuhmann Printing Co., Inc.

437 SOUTH SECOND STREET

Louisville, Ky. JUniper 3-3869

May We Serve You?

THE LINE UP

TEMPLE UNIVERSITY

NO. R W	NAME	POS.	HT.	WT.	CLASS	FIELD GOALS	FREE THROWS	FOULS
3 4	Bill Kennedy	G	5-11	170	So.			
5 5	**Guy Rodgers	G	6-0	182	Sr.			
10 10	*Tink Van Patton	C	6-8	225	Sr.			
11 30	Jack Peepe	G	6-2	202	Jr.			
12 12	Cliff Crispin	G	6-0	183	So.			
14 14	Gerry Lipson	G	6-0	190	So.			
23 32	Mel Brodsky	F	6-2	180	Sr.			
25 52	Pete Goss	C	6-7	215	Jr.			
31 24	**Jay Norman	F	6-3	190	Sr.			
33 22	**Dan Fleming	F-C	6-6	210	Sr.			
35 34	*Ophie Franklin	F	6-4	170	Jr.			
41 42	*Joe Goldenberg	G	5-7	155	Jr.			
45 44	Erwin Abrams	C	6-6	190	So.			

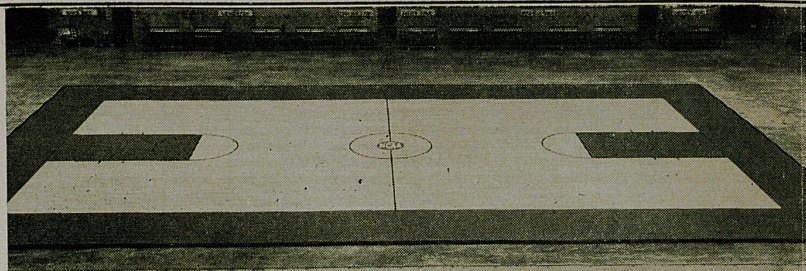
* Denotes number of major letters

UNIVERSITY OF KENTUCKY

NO. W B	NAME	POS.	HT.	WT.	CLASS	FIELD GOALS	FREE THROWS	FOULS
00 5	**Bill Smith	F-C	6-5	203	Sr.			
4 3	**Harold Ross	G	6-2	180	Sr.			
10 11	**L. Collinsworth	G	6-3	185	Sr.			
12 33	**Bill Cassady	G-F	6-2	191	Sr.			
14 15	*Phil Johnson	C-F	6-6	190	Jr.			
20 43	*Dick Howe	C-F	6-5	208	Jr.			
24 25	*Johnny Cox	F	6-4	185	Sr.			
32 31	**John Crigler	F	6-3	180	Sr.			
34 35	**Ed Beck	C	6-7	188	Sr.			
40 41	**Earl Adkins	G	6-4	180	Sr.			
50 51	*Adrian Smith	G	6-0	178	Sr.			
52 53	**Vernon Hatton	G	6-3	188	Sr.			
54 55	Don Mills	C	6-7	190	So.			

* Denotes number of major letters

Like **EVERY**
other major
tournament floor...



THE KENTUCKY FAIR & EXPOSITION CENTER
FLOOR IS FINISHED WITH HILLYARD



CHAMPIONSHIP VALUES

New Cars - Used Cars - Service!

**Almond Cooke's
BROADWAY
CHEVROLET**

Seventh and Broadway

LOCATED TO SERVE YOU BETTER

KANSAS STATE COLLEGE

NO. W P	NAME	POS.	HT.	WT.	CLASS	FIELD GOALS	FREE THROWS	FOULS
10 11	**Roy DeWitz	G-F	6-3	184	Sr.			
12 13	Sonny Ballard	G	6-0	150	So.			
14 15	**Don Richards	G	6-1	160	Sr.			
20 21	*Don Matuszak	G	6-0	183	Jr.			
22 23	Steve Douglas	G	6-4	183	So.			
24 25	**Hayden Abbott	F-G	6-3	186	Sr.			
30 31	*Bob Boozer	F-C	6-8	214	Jr.			
32 33	**Jack Parr	C	6-9	212	Sr.			
34 35	Wally Frank	F-C	6-8	212	So.			
40 41	Glen Long	F	6-4	189	So.			
44 45	**Larry Fischer	F	6-4	190	So.			
50 51	*Jim Holwerda	G	6-0	160	So.			

* Denotes number of major letters

Smile of Welcome

Your Standard Oil dealer is glad to
clean your windshield - check your
tires and radiator . . . help
you keep your car run-
ning better longer.

**STANDARD OIL
COMPANY**

(KENTUCKY)

The B & B Bar

REEL REPAIR

"WHERE GOOD
SPORTSMEN MEET"

JUniper 4-9342

835 West Jefferson Street



Five Milli
Daily C

Kwik Kafe automatic dispenser
100% pure coffee. Enjoy a r
venient automatic dispenser in

Machines Installed

Hillyard Trophy Gym finish is chosen by schools and arenas throughout the nation for: **PROTECTION** — wears twice as long as ordinary finishes, preserves original appearance, prevents rubber burns. **LIGHTNESS** — allows players and spectators to see plays clearly. **NON-GLARE** — diffuses lighting for maximum effectiveness, perfect in person or on TV. **SLIP RESISTANCE** — a safe footing for fast action play. This year every major basketball tournament will be played on a Hillyard Trophy Floor.

- MADISON SQUARE GARDEN (*National Invitational*)
- KANSAS CITY AUDITORIUM (*N.A.I.A. Finals*)
- DENVER MUNICIPAL AUDITORIUM (*A.A.U.*)
- ST. JOSEPH CITY AUDITORIUM (*Women's A.A.U.*)
- BOSTON GARDEN (*N.B.A. Champion Celtics*)



ST. JOSEPH, MO.

SEATTLE UNIVERSITY

NO.	NAME	POS.	HT.	WT.	CLASS	FIELD GOALS	FREE THROWS	FOULS
5	*Lloyd Murphy	G	5-11	160	Jr.			
21	Don Piasecki	G	6-2	190	So.			
22	*Elgin Baylor	C	6-6	225	Jr.			
23	John Kootnekoff	G	6-2	191	So.			
24	Bob Siewarga	G	5-10	170	So.			
25	Jude Petrie	F	6-6	220	So.			
33	**Jim Harney	G	5-10	170	Sr.			
35	*Francis Saunders	G	6-2	175	Jr.			
44	*Bill Wall	F	6-2	200	Jr.			
45	Charley Brown	G	6-2	180	Jr.			
52	John Stepan	C	6-6	215	So.			
53	Don Ogorek	F	6-4	200	So.			
54	*Jerry Frizzell	F	6-4	190	Jr.			
55	*Thor'n Humphries	C	6-7	180	Jr.			

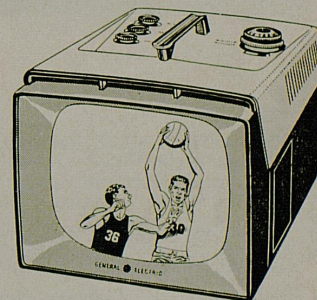
* Denotes number of major letters

When you can't attend the game...



WATCH IT ON A PORTABLE TV

as low as
\$139⁹⁵



SEE YOUR GENERAL ELECTRIC DEALER TOMORROW

GENERAL ELECTRIC COMPANY

Appliance & Television Receiver Division • Sales and Distribution Dept.
LOUISVILLE • LEXINGTON • EVANSVILLE • HARLAN

Million Cups of Coffee Family Can't Be Wrong!

Automatic dispensers serve the finest . . . not a powder, not an "instant" but . . .
Enjoy a really good cup of coffee or hot chocolate from the coffee dispenser in the lobby.

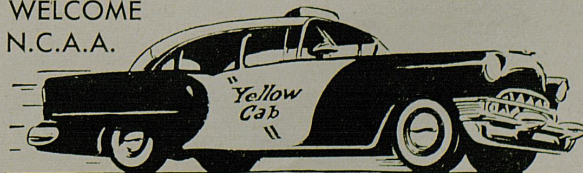
Kwik-Koffee-Break, Inc.

1121 West Market St.
JUniper 4-3403

Installed Without Obligation! Call Us For Details

YOUR CHOICE!

WELCOME
N.C.A.A.



-- and the overwhelming
choice of Kentuckiana

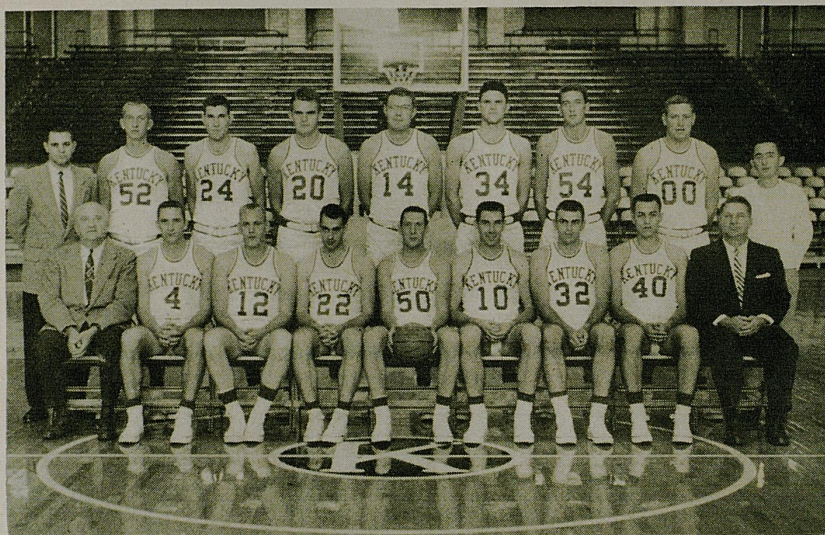
YELLOW CAB

JU. 4-2121

KENTUCKY WILDCATS

UNIVERSITY OF KENTUCKY

Location: Lexington, Kentucky
 Enrollment: 8,051
 President: Dr. Frank G. Dickey
 Ath. Dir.: Bernie Shively
 Coach: Adolph Rupp
 Assistants: Harry Lancaster
 William Wireman
 Conference: Southeastern
 Colors: Blue and White
 Nickname: Wildcats



Seated, L to R.: Head Coach Adolph Rupp, Harold Ross, Bill Cassady, E. A. Couch (no longer on team), Adrian Smith, Lincoln Collinsworth, John Crigler, Earl Adkins, Asst. Coach Harry Lancaster. Standing, L to R.: Assistant Coach Bill Wireman, Vernon Hatton, Johnny Cox, Dick Howe, Phil Johnson, Ed Beck, Don Mills, Bill Smith, Manager Jay Atkerson.

TRADITION-RICH Kentucky, whose basketball bloodlines match those of the noble thoroughbreds in the Blue Grass heartland of the horse racing industry, goes after its fourth National Collegiate championship.

The three titles the Wildcats already own represent a national record. And so does this 10th appearance in the national championship tournament.

The current Wildcats, though, had by far a rockier road to travel in getting into the "World Series" of basketball than any of their predecessors. Although a veteran team which starts four seniors and one junior, Kentucky this season was confronted with the toughest schedule in Wildcat history.

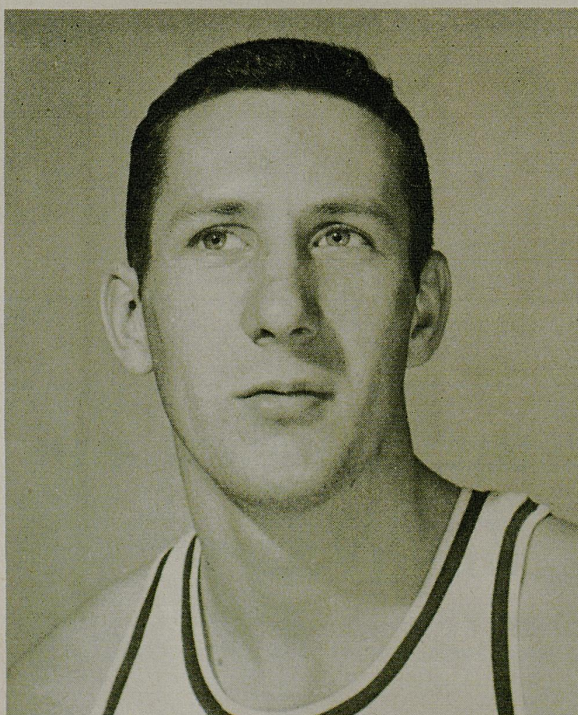
Moreover, the Wildcats found themselves in pitched-battle in a Southeastern Conference that Coach Adolph Rupp believes was the most rugged over-all since the loop was first organized back in 1932.

Kentucky got off to a fast start in a December schedule that included such powerhouses as West Virginia, which wound up the No. 1 team in national polls; a Temple that lost only two games, both on the road; highly-ranked Duke and Maryland, and other respected foes, such as St. Louis, S.M.U., Minnesota and Ohio State.

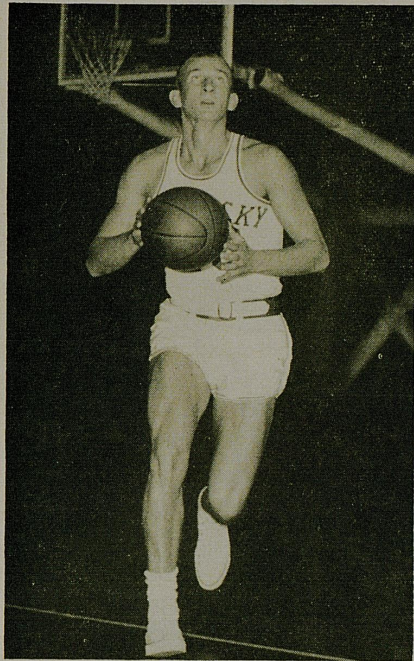
During this stretch, Kentucky showed the team balance that was to carry it through the season. Scoring was spread between guard Vernon Hatton, who ended with an average of 16.8 points; Johnny Cox, 14.3, John Crigler, 13.9, and Adrian Smith, 12.6. Center Ed Beck, 6-7, who shared rebounding honors with Cox, was the feeder, playmaker off the post and top ball handler.

The December effort was a rugged one for Kentucky and took its toll. Going into the S.E.C. schedule, the Wildcats were a tired club. But it finished strong, taking undisputed hold of its 19th S.E.C. championship by beating big Tennessee in the final game of the season.

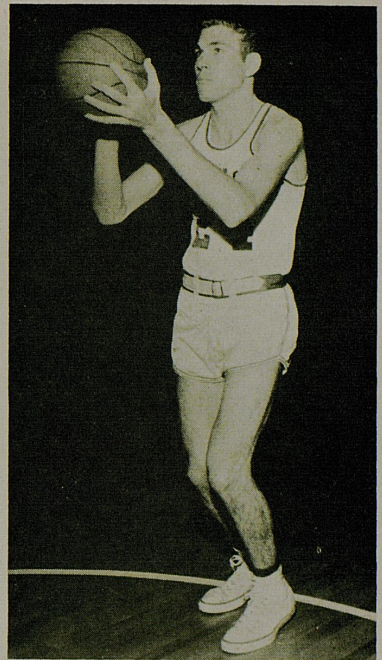
The Cats ended with a 14-2 conference mark, were 19-6 over-all during the regular season and 21-6 going into the national finals.



Only the third junior college transfer to don a Kentucky uniform, six-foot senior guard Adrian Smith of Farmington, Ky., averaged 12.6 points. He was a junior college All-American at Northeast Mississippi, where he averaged 27.2 in 1956.



Senior guard *Vernon Hatton* of Lexington, Ky., led Wildcat scorers with a 16.3 average. He can drive, can operate under the basket, and can hit push shots from 10 to 25 feet. Hit a 47-foot set with a second left in the first overtime against Temple that helped U.K. win in a third overtime.



A 6-4 junior forward from Hazard, Ky., *Johnny Cox* led Kentucky in rebounding with 336 and averaged 14.3 points as well. Has a deadly 20-foot jump from the sides and may be Kentucky's first All-American in three seasons next campaign.

SEASON'S RECORD

WON 21 - LOST 6

Kentucky	78	Duke	74
Kentucky	61	Ohio State	54
Kentucky	85	Temple ###	83
*Kentucky	62	Maryland	71
Kentucky	73	St. Louis	60
*Kentucky	64	S.M.U.	65
*Kentucky	70	West Virginia	77
Kentucky	78	Minnesota	58
Kentucky	92	Utah State	64

Kentucky	75	Loyola (Ill.)	42
Kentucky	76	Georgia Tech	60
Kentucky	86	Vanderbilt	81
Kentucky	97	Louisiana St.	52
Kentucky	86	Tulane	50
Kentucky	77	Tennessee	68
*Kentucky	52	Georgia Tech	71
Kentucky	74	Georgia	55
Kentucky	78	Florida	56

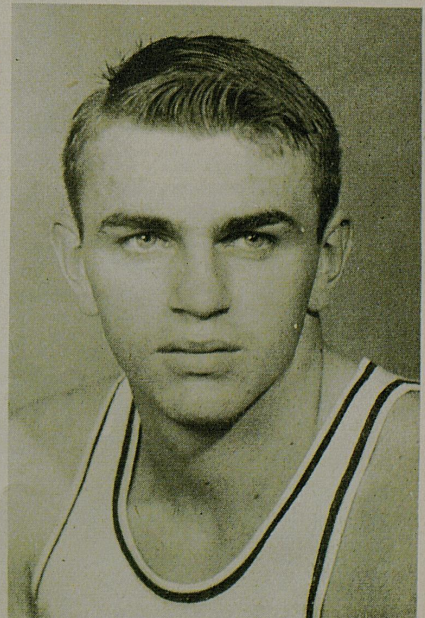
Kentucky	96	Mississippi	65
Kentucky	72	Mississippi St.	62
*Kentucky	56	Loyola (Ill.)	57
Kentucky	65	Vanderbilt	61
Kentucky	45	Alabama #	43
*Kentucky	63	Auburn	64
Kentucky	77	Tennessee	66
Kentucky	94	Miami (Ohio)	70
Kentucky	89	Notre Dame	56

* Losses # Overtimes



A senior from Hebron, Ky., *John Crigler* is a chips-down player. The 6-3 performer has pulled many a game out of the fire for Kentucky, averaged 13.9 points, hauled in 255 rebounds. Called by many observers U.K.'s key performer.

Only non-Kentuckian in the starting lineup, 6-7 *Ed Beck*, a Georgian, is a licensed Methodist minister. Was second U.K. rebounder with 319. Not a particular scoring threat, he is the Wildcat feeder but he hits field goals in the clutch.





DR. FRANK G. DICKEY
President



One of the lovelier buildings on the U.K. campus is Memorial Hall . . . The spire of the colonial-type building rises above one of the South's oldest universities.

A campus landmark is the administration building of U.K., a school situated in the heart of the famed Bluegrass region, renowned as the capital of the Thoroughbred racing industry and home of the world's largest loose-leaf tobacco market.

BERNIE SHIVELY
Athletic Director



WON-AND-LOST RECORDS

THE 1958 National Collegiate Basketball Championship, made up of a 24-team field, listed five institutions as newcomers when competition opened for the national title on March 11. The addition of these five brings to 110 the number NCAA member institutions which have participated in the event over its 20-year history.

Four of the newcomers were eliminated in their first test in National Collegiate play and the fifth, Maryland, survived a first-round contest only to fall in a second-round game.

For institutions which have competed in one or more tournaments, LaSalle College owns the best won-and-lost record with 9-1, produced by one championship and one runner-up position.

The University of Kentucky, three times national champion, has qualified for the championship tournament more than any other institution—ten times—and has won more games, 16.

Stanford is the only institution with a perfect 1.000 mark in tournament play, having won the 1942 crown.

Team (Yrs. Participated)	Total Yrs.	W	L	Pct.	Pts.	Opp.	Team (Yrs. Participated)	Total Yrs.	W	L	Pct.	Pts.	Opp.
Stanford (1942)	1	3	0	1.000	152	120	Colorado (1940-42-46-54-55)	5	5	7	.417	678	692
LaSalle (1954-55)	2	9	1	.900	795	654	Arkansas (1941-45-49-58)	4	3	5	.375	601	667
Indiana (1940-53-54-58)	4	9	2	.818	779	689	San Francisco (1955-56-57-58)	4	13	2	.867	1059	928
Wisconsin (1941-47)	2	4	1	.800	232	233	Baylor (1946-48-50)	3	3	5	.375	402	451
Oregon (1930-45)	2	4	1	.800	302	256	DePaul (1949-53-56)	3	2	4	.333	382	405
Temple (1944-56-58)	3	7	2	.778	707	572	Navy (1947-53-54)	3	2	4	.333	372	403
Kansas (1940-42-52-53-57)	5	13	4	.765	1098	960	Pittsburgh (1941-57-58)	3	2	4	.333	396	407
Ky. (1942-45-48-49-51-52-55-56-57-58)	10	18	6	.750	1664	1434	Rice (1940-42-54)	3	2	4	.333	327	320
Bradley (1950-54-55)	3	8	3	.727	798	777	Wayne (1956)	1	1	2	.333	220	242
St. John's (1951-52)	2	5	2	.714	425	415	Wake Forest (1939-53)	2	1	2	.333	214	214
Okla. State (1945-46-49-51-53-54-58)	7	14	6	.700	1065	956	Lebanon Valley (1953)	1	1	2	.333	227	247
North Carolina (1941-46-57)	3	7	3	.700	628	565	L.S.U. (1953-54)	2	2	4	.333	438	468
Notre Dame (1953-54-57-58)	3	7	3	.700	628	565	Wyoming (1941-43-47-48-49-52-53-58)	8	5	11	.313	799	969
Canisius (1955-56-57)	3	6	3	.667	634	645	Idaho State (1953-54-55-56-57-58)	6	4	9	.308	753	808
C.C.N.Y. (1947-50)	2	4	2	.667	370	366	Manhattan (1957-58)	2	1	3	.250	261	298
Marquette (1955)	1	2	1	.667	250	236	St. Louis (1952-57)	2	1	3	.250	241	280
Maryland (1958)	1	2	1	.667	212	189	Miami (Ohio) (1953-55-57-58)	4	1	5	.167	482	511
Syracuse (1957)	1	2	1	.667	215	234	U.C.L.A. (1950-52-56)	3	1	5	.167	388	421
Washington State (1941)	1	2	1	.667	146	131	Connecticut (1951-55-56-57-58)	5	1	6	.143	479	530
Georgetown (1943)	1	2	1	.667	142	131	Boston College (1958)	1	0	1	.000	63	86
Kansas State (1948-51-56-58)	4	7	4	.636	749	697	Arizona State (1958)	1	0	1	.000	68	72
Dartmouth (1941-42-43-44-56-58)	6	10	6	.625	896	842	Toledo (1954)	1	0	1	.000	50	62
Iowa (1955-56)	2	5	3	.625	635	604	George Washington (1954)	1	0	1	.000	73	75
Illinois (1942-49-51-52)	4	8	5	.615	831	800	Louisville (1951)	1	0	1	.000	68	79
Santa Clara (1952-53-54)	3	6	4	.600	664	615	Arizona (1951)	1	0	1	.000	59	61
Holy Cross (1947-48-50-53-56)	5	7	5	.583	785	757	Marshall (1956)	1	0	1	.000	92	107
Ohio State (1939-44-45-46-50)	5	7	5	.583	663	599	Montana State (1951)	1	0	1	.000	46	50
Oklahoma (1939-43-47)	3	4	3	.571	343	356	Duke (1955)	1	0	1	.000	73	74
Utah (1944-45-55-56)	4	5	4	.556	555	564	West Texas (1955)	1	0	1	.000	66	89
Penn State (1942-52-54-55)	4	6	5	.545	641	679	Williams (1955)	1	0	1	.000	60	73
Washington (1943-48-51-53)	4	6	5	.545	723	666	Tennessee Tech (1958)	1	0	1	.000	61	94
N. C. State (1950-51-52-54-56)	5	6	6	.500	826	824	Texas A&M (1951)	1	0	1	.000	40	62
Villanova (1939-49-51-55)	4	4	4	.500	499	505	San Jose (1951)	1	0	1	.000	61	68
U.S.C. (1940-54)	2	3	3	.500	352	343	Western Kentucky (1940)	1	0	1	.000	29	30
Morehead State (1956-57)	2	2	2	.500	370	359	Brown (1939)	1	0	1	.000	30	42
T.C.U. (1952-53)	2	2	2	.500	237	239	Springfield (1940)	1	0	1	.000	24	48
Duquesne (1940-52)	2	2	2	.500	188	191	Eastern Kentucky (1953)	1	0	1	.000	57	72
Michigan State (1957)	1	2	2	.500	285	292	Colorado A&M (1954)	1	0	2	.000	107	135
Cincinnati (1958)	1	1	1	.500	177	145	Lafayette (1957)	1	0	2	.000	147	157
Creighton (1941)	1	1	1	.500	84	92	Cornell (1954)	1	0	2	.000	121	134
Dayton (1952)	1	1	1	.500	138	151	Harvard (1946)	1	0	2	.000	99	113
Iowa State (1944)	1	1	1	.500	75	79	Houston (1956)	1	0	2	.000	143	179
Michigan (1948)	1	1	1	.500	111	112	Pepperdine (1944)	1	0	2	.000	85	105
Missouri (1944)	1	1	1	.500	96	91	Tufts (1945)	1	0	2	.000	100	125
Pennsylvania (1953)	1	1	1	.500	147	139	Catholic U. (1944)	1	0	2	.000	73	118
Tulsa (1955)	1	1	1	.500	127	136	New Mexico A&M (1952)	1	0	2	.000	97	123
Utah State (1939)	1	1	1	.500	90	99	Fordham (1953-54)	2	0	2	.000	141	156
Seattle (1953-54-55-56-58)	5	6	7	.462	956	1001	Hardin-Simmons (1953-57)	2	0	2	.000	113	149
Southern Methodist (1955-56-57)	3	4	5	.444	680	659	Memphis State (1955-56)	2	0	2	.000	136	156
Brigham Young (1950-51-57)	3	3	4	.429	451	467	Texas Tech (1954-56)	2	0	2	.000	131	141
California (1940-57-58)	3	3	4	.429	380	375	Columbia (1948-51)	2	0	3	.000	173	221
N.Y.U. (1943-45-46)	3	3	4	.429	375	382	Yale (1949-57)	2	0	3	.000	209	239
Oregon State (1947-49-55)	3	3	4	.429	395	380	Loyola (South) (1954-57-58)	3	0	3	.000	167	215
Texas (1939-43-47)	3	3	4	.429	353	365	Princeton (1952-54)	2	0	4	.000	223	274
Okla. City (1952-53-54-55-56-57)	6	5	7	.417	813	828	West Virginia (1955-56-57-58)	4	0	4	.000	262	309

SEATTLE CHIEFTAINS

SEATTLE UNIVERSITY

Location: Seattle, Washington
 Denomination: Catholic
 Enrollment: 3,065
 President: Very Rev.
 A. A. Lemieux, S.J.
 Ath. Dir. and
 Coach: John Castellani
 Asst. Coach: Vince Cazzetta
 Conference: Independent
 Colors: Maroon and White
 Nickname: Chieftains



Top Row (l to r.): Charlie Brown, Francis Saunders, John Stepan, Thornton Humphries, Elgin Baylor, Jerry Frizzell, Jude Petrie. Middle Row: Don Piascki, Jim Harney, Lloyd Murphy, Bill Wall, John Kootnekoff, Don Ogorek. Front Row: John Castellani, head coach and athletic director; Bob Siewarga.

A SPLIT-SECOND before the game-ending buzzer sounded, All-American Elgin Baylor let fly a shot from 35 feet. The ball thudded against the braced rear end of the rim and plunked through. Final score: Seattle 69, San Francisco 67.

That hair's breath of a second and those 35 feet measured the time and distance between Seattle reaching the national championship rounds for the first time, or for the fifth time failing to advance in the NCAA tournament.

Four times before the Chieftains had tried their luck in National Collegiate Basketball Championship competition — four successive times, as a matter of fact, dating from 1953 through 1956.

But now they have the nation's No. 2 scorer, sensational Elgin Baylor whose kangaroo-kick beneath the boards belies his 6-5 height. He generally is listed as taller — usually at least 6-6.

Behind this fabulous, high-scoring, savagely-rebounding All-American, Seattle now gets a clear shot at basketball's richest prize — the college championship.

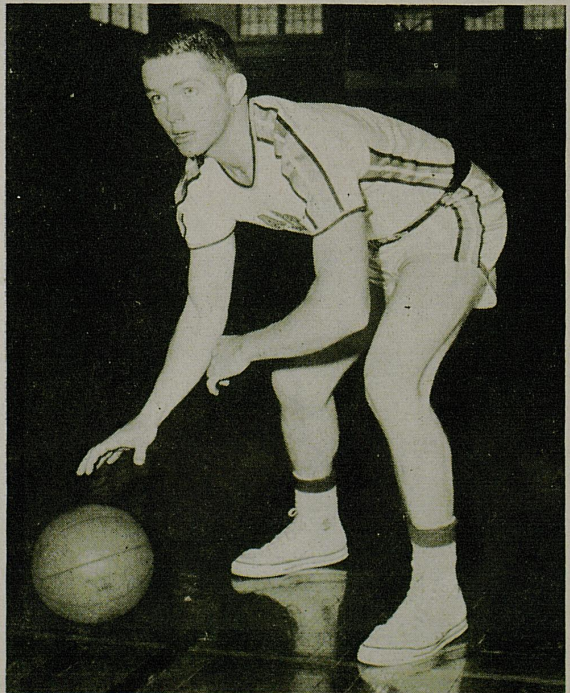
The only team in the finals which needed to win three games to get to Louisville, Seattle now owns a record of 6-7 in tournament play.

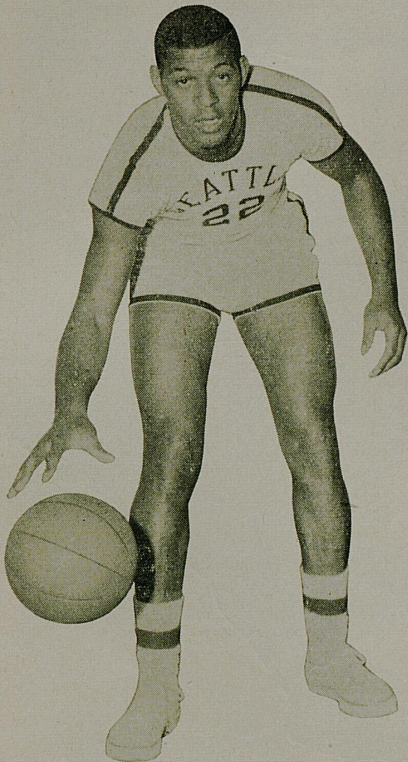
Although the remarkable Baylor — averaging 33 points per game — is the hub around which the rest of the Seattle spokes rotate, the Chiefs aren't a one-man team. Junior Baylor has an excellent supporting cast in guard Jim Harney, 5-10, guard Francis Saunders, 6-2, forward Jerry Frizzell, 6-4, and forward Charley Brown, 6-3.

The Chieftains favor the fast-break. They will, if forced, play pattern basketball in a slow down.

In knocking San Francisco out of the national championship finals for the first time in the last four seasons, Seattle cruised to a season's record of 22 triumphs and 5 defeats.

One of the smallest players in the tournament is the 5-10 Jim Harney, senior guard for Seattle. A mite who often sets-up Chieftain plays and passes off to the high scoring Elgin Baylor, Harney is averaging 7.1 points but he has been hitting on 46 per cent of his shots.





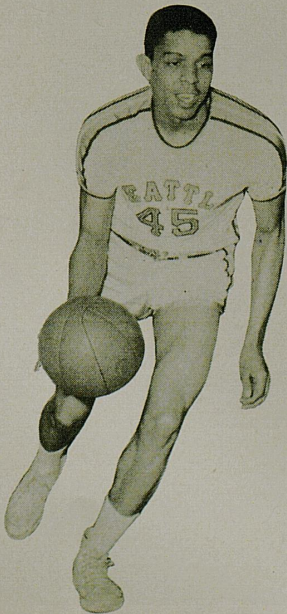
The nation's second highest scorer during the regular season with a fantastic average of 33 points, Baylor also has pulled down a terrific 518 rebounds for Seattle on the way to All-American honors.

SEASON'S RECORD — WON 22 · LOST 5

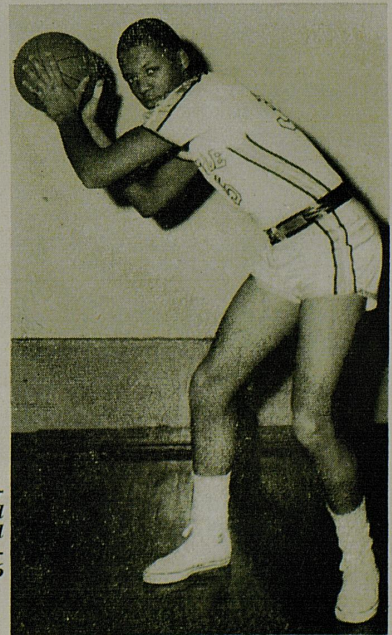
Seattle	104	Portland State	54
*Seattle	55	Oregon State	63
Seattle	82	Bradley	76
*Seattle	51	San Francisco	60
Seattle	80	Army	51
Seattle	87	Connecticut	83
*Seattle	73	Temple	91
*Seattle	75	Dayton #	81
Seattle	77	Portland	47
Seattle	97	Portland	75
Seattle	108	Montana State	83
Seattle	90	Gonzaga	69
Seattle	75	Gonzaga	53
Seattle	75	Santa Clara	67
Seattle	94	Portland	91
Seattle	84	Portland	80
Seattle	83	Gonzaga	67
Seattle	107	Gonzaga	71
Seattle	99	Regis	69
Seattle	78	Montana State	77
*Seattle	68	Idaho State #	71
Seattle	94	Pacific Lutheran	60
Seattle	73	Idaho State	60
Seattle	80	Bradley	74
Seattle	88	Wyoming	51
Seattle	69	San Francisco	67
Seattle	66	California #	62

* Losses # Overtimes

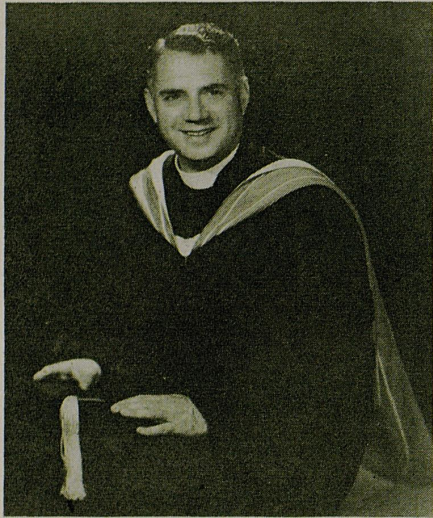
Charley Brown is a 6-2 junior guard who is Seattle's second high scorer with a 10.4 average and second leading rebounder with 193. A junior, he's a transfer from Indiana University, where he was a starter as a sophomore.



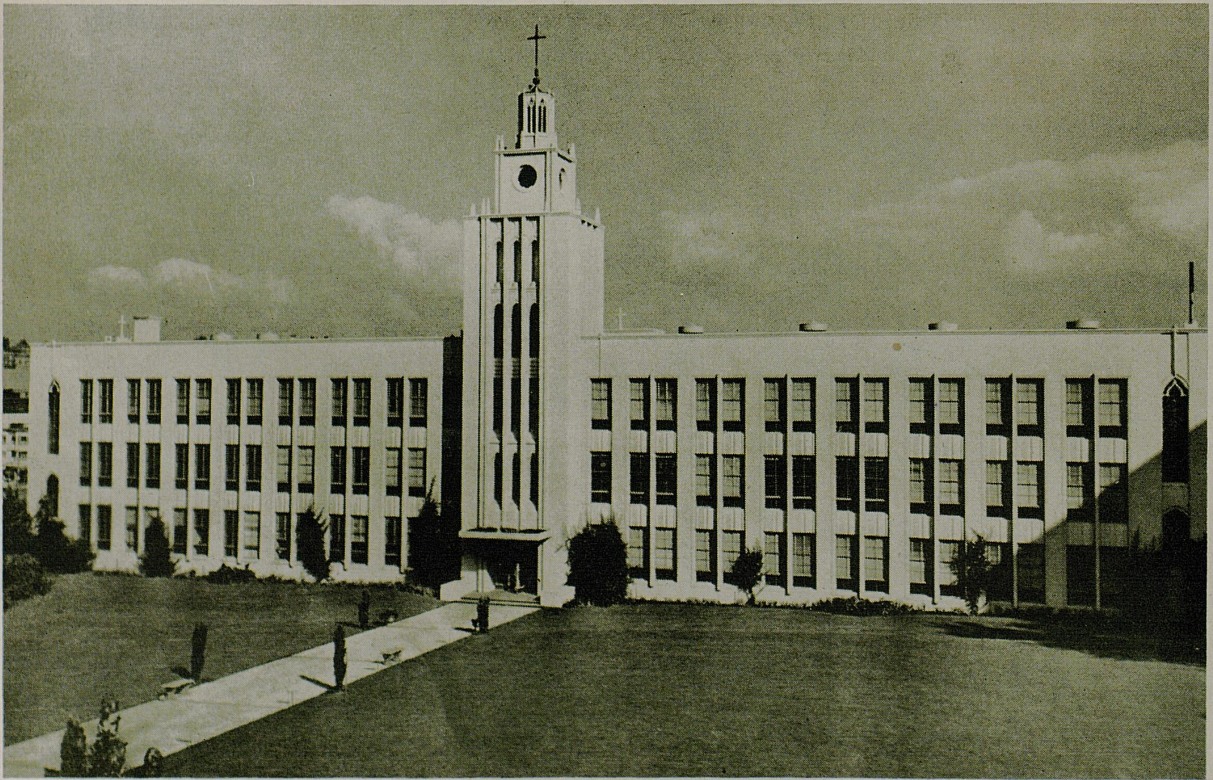
Francis Saunder, a 6-2 junior guard for the Chieftains, traveled clear across the nation to attend Seattle. His home is Washington, D.C. He's averaging 5.6 points per contest.



VERY REV. A. A. LEMIEUX, S.J.
President



A 6-4 junior forward on a predominantly junior-sophomore team that should be a power again next season, Jerry Frizzell is averaging 9.1, has latched on to 121 rebounds.



Liberal Arts Building, Seattle University, one of the more recent additions to the buildings composing the university group.

Now 2 great

CONVERSE

Chuck Taylor

ALL STARS

ALL STAR OXFORD

Newest member of the All Star family — a completely new conception in design incorporating features never offered before in a low-cut shoe — **ANGLE-CUT HIGH FRONT QUARTER** to provide wrinkle-free snug instep support — **CONTOUR FITTED HEEL COUNTER** to assure glove-smooth, positive fit — **SEAMLESS FOREPART** eliminates chafing.



REGULAR ALL STAR

First on the courts for over 40 years — and still the world's outstanding basketball shoe — worn by more leading teams in high school, college and major league play than any other brand.



BOTH ALL STARS feature

- COOL, COOL FREE-BREATHING loose lined army duck uppers
- LIGHTWEIGHT for speed
- FOOTFORM LAST
- ARCH CUSHION combined with shock absorbing sponge insole
- RUGGED PROTECTIVE TOE GUARD
- DOUBLE SOLE BINDING
- NON-MARKING MOLDED OUTSOLE for positive traction
- FABRI-GARD LINING is treated to better withstand chemical action of perspiration
- EASILY WASHABLE with mild soap and water



America's No. 1 Basketball Shoes

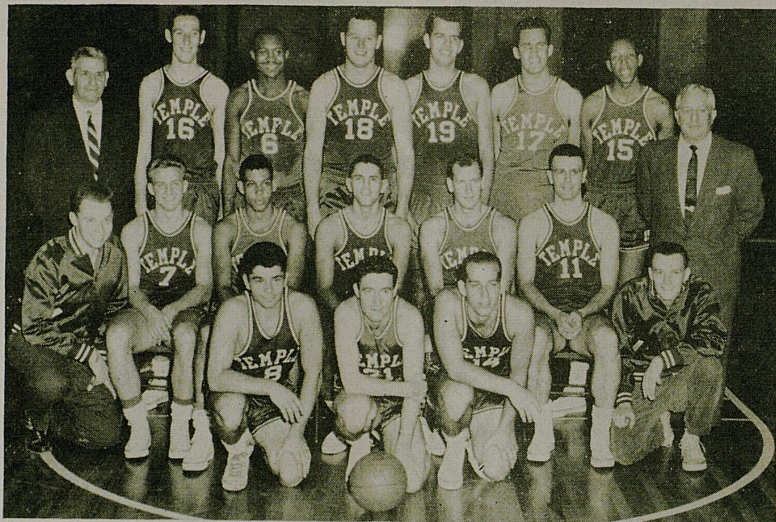
CONVERSE RUBBER COMPANY
MALDEN 48, MASSACHUSETTS

CONVERSE
Chuck Taylor
ALL STAR
BASKETBALL SHOES

TEMPLE OWLS

TEMPLE UNIVERSITY

Location: Philadelphia, Penn.
 Enrollment: 4,325
 President: Dr. Robert L. Johnson
 Ath. Dir.: Joshua "Josh" Cody
 Coach: Harry Litwack
 Assistant: Ed. Baron
 Colors: Cherry and White
 Nickname: Owls



First Row: Joe Goldenberg, Al Staines, Gerry Lipson. Second Row: Manager Charlie Hulet, Bill Kennedy, Guy Rodgers, Mel Brodsky, Cliff Crispin, Jack Peepe, manager Frank Walker. Third Row: Asst. Coach Ed Baron, Erv Abrams, Jay Norman, Tink Van Patton, Pete Gross, Dan Fleming, Ophie Franklin, head coach Harry Litwack.

TEMPLE presented a case where the Owls had the eyes of fans blinking this season — blinking at the incredible gyrations of a six-foot-guard by the name of Guy Rodgers.

Being hailed as one of the great guards of all time because of his 20.1-point average, his skin-cleaving defensive play and his playmaking, the hustling Rodgers has led the Owls to a 26-2 record.

Moreover, the Owls bring into the National Collegiate championship rounds the longest winning streak among the four adversaries — one of 25 straight!

Temple's two losses came in the Owls second and third games of the season. Both were on the road. And both contained elements of hard luck.

Against Kentucky at Lexington, the Owls lost, 85-83, in a triple overtime. Rodgers had the game won for the Owls with a driving field goal in the final seven seconds, but Kentucky got a timeout with a second remaining.

Vernon Hatton took the ball on an out-of-bounds pass at midfloor and fired a 47-foot set-shot to tie the game in the first overtime. Kentucky went on to win.

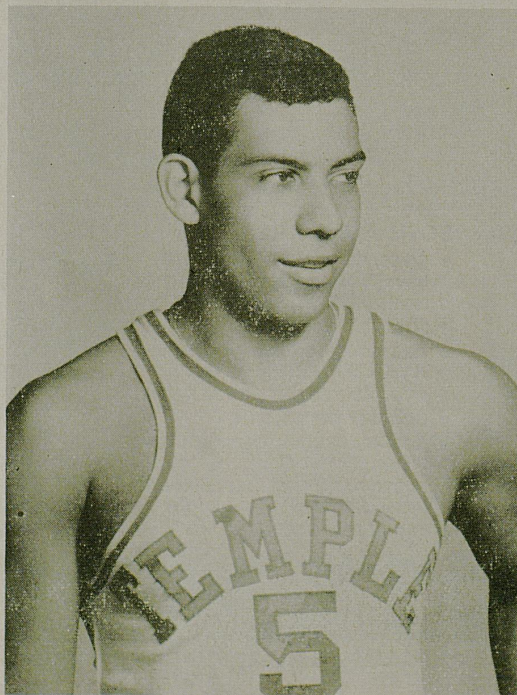
That was on Saturday night. On Sunday, stormy weather grounded the Temple plane and the Owls hopped a bus to Cincinnati. There on Monday, with Jay Norman and Mel Brodsky nursing injuries from the U.K. game, the Owls were bounced, 80-57.

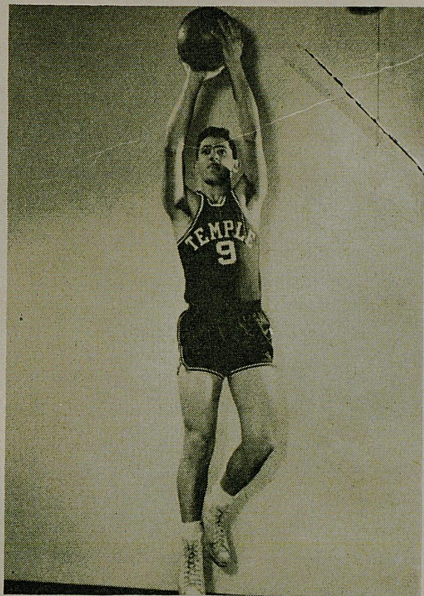
Regrouping their forces, they went on courageously to win their next 25 straight with — despite the spotlight on Rodgers — a balanced attack. Balanced because behind Rodgers, Billy Kennedy is averaging 13.4 points, Jay Norman 13.1, and Mel Brodsky 11.1.

Additionally, Temple has a strong defense to fall back on when the offensive is not clicking, a defense that has held the opposition to an average of 58.4 points.

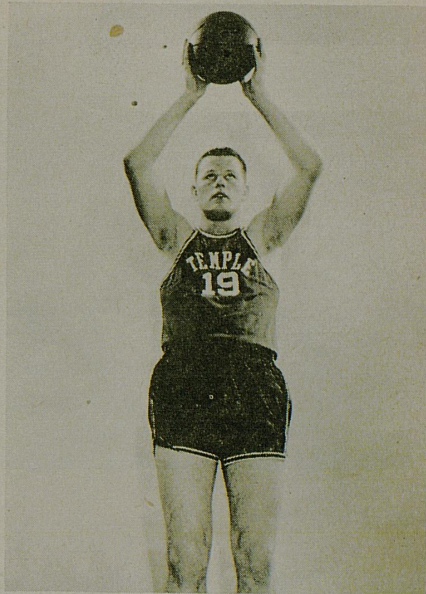
A tournament-tested outfit — it has been in meets now for three successive seasons — the Owls have mustered a winning tradition during the Rodgers era. Since this senior has been on the club, the Owls have compiled a record of 73 victories against 15 losses.

A six-foot senior guard who is expected to be recorded among the all-time greats of the game is the brilliant Guy Rodgers of Temple . . . Averaging 20.1 points per contest . . . Quarterback of the Temple offense, equally tough on defense, and an inspiration to his teammates.





Mel Brodsky is a 6-2 senior forward for Temple whose own outstanding basketball career has been overshadowed by having played with the seven-foot Wilt Chamberlain at Philadelphia's Overbrook High and now with Guy Rodgers at Temple. He's averaging 11.1 points per game.



Center on the Temple team is 6-8 Tink Van Patton, a senior who is averaging just a low 6.9 points but whose value to the team is as a feeder off the post, as a second playmaker and as a rebounder.

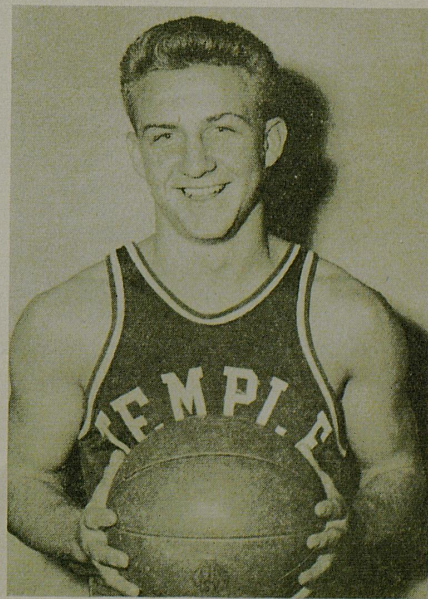
SEASON'S RECORD — WON 26 · LOST 2

Temple..... 83	Delaware	38	Temple..... 64	Penn State	45	Temple..... 62	Geo. Washington	55
*Temple..... 83	Kentucky ###	85	Temple..... 83	Lafayette	66	Temple..... 61	Wake Forest	49
*Temple..... 57	Cincinnati	80	Temple..... 72	Pennsylvania	61	Temple..... 73	Villanova	58
Temple..... 75	Bucknell	59	Temple..... 89	Gettysburg	68	Temple..... 77	Lafayette	54
Temple..... 60	Texas A&M	44	Temple..... 73	St. Joseph's	58	Temple..... 76	Duquesne	40
Temple..... 72	Muhlenberg	54	Temple..... 81	St. John's	58	Temple..... 58	Lehigh	51
Temple..... 76	Pittsburgh	71	Temple..... 72	Duquesne	48	Temple..... 91	St. Joseph's	77
Temple..... 91	Seattle	73	Temple..... 88	Seton Hall	53	Temple..... 71	Maryland	67
Temple..... 69	California	59	Temple..... 71	LaSalle	61	Temple..... 69	Dartmouth	50
Temple..... 72	Lebanon Valley	52						

* Losses # Overtimes



A 6-3 senior forward from Philadelphia, Jay Norman is one of the players who give the Owls a balanced scoring attack. He, like four others of the regulars, is scoring in double figures—13.1.



Second high scorer among the versatile Temple Owls, whose defense matches their offense, is 5-11 sophomore guard Bill Kennedy. He's averaging 13.4 points per game, is behind leading Rodgers in assists per game with 2.8.



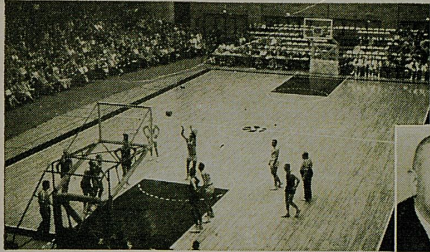
DR. ROBERT L. JACKSON
President



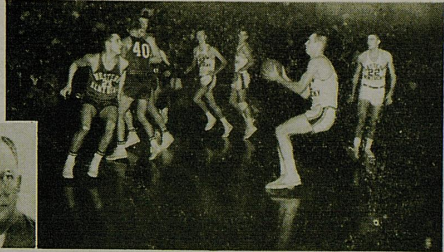
JOSH CODY
Director of Athletics



*Sullivan Memorial Library of Temple University is the busiest spot on the campus.
It was formally dedicated in 1936 by President Franklin Delano Roosevelt.*



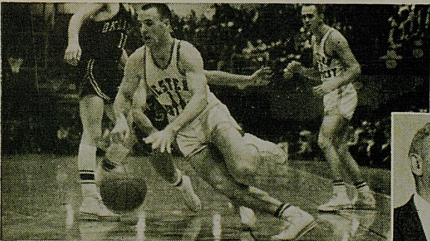
University of Kentucky, Lexington • Coach Adolph Rupp says, "At Kentucky I specified that Seal-O-San must be used. I've recommended it many times to other coaches."



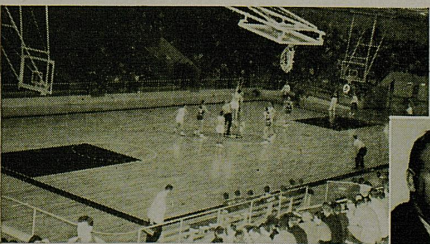
Eastern Kentucky State College, Richmond • "Seal-O-San does a wonderful job in improving the appearance of a court, as well as protecting it," says Paul S. McBrayer.



Murray State College, Murray • Coach Rex Alexander says, "Seal-O-San provides good traction and a lasting finish to our gym floor. It's easy to keep clean, too."



Western Kentucky State College, Bowling Green • "I have been using Seal-O-San since I started coaching here thirty-six years ago," say Coach E. A. Diddle.



Morehead State College, Morehead • Head coach Bob Laughlin says, "I found that Seal-O-San keeps our floors looking good and makes a safe, nonslippery surface."

Read why these five Kentucky schools use Seal·O·San.

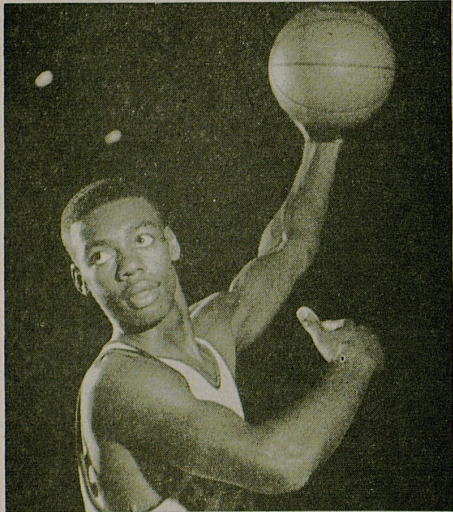
Hundreds of coaches and school officials in Kentucky and all over the country prefer Seal-O-San gym floor finish. It provides a nonslippery surface that is durable and glare-free. It is easy to care for and reduces maintenance costs. Most important, Seal-O-San is resilient enough to give a player's foot the "extra spring" needed for fast action. Specify Seal-O-San the next time you refinish your gym floor. Write today for more information.

HUNTINGTON LABORATORIES
INCORPORATED

Huntington, Indiana • Philadelphia 35, Pennsylvania • Toronto 2, Ontario

HUNTINGTON

SIDELINE SHOTS



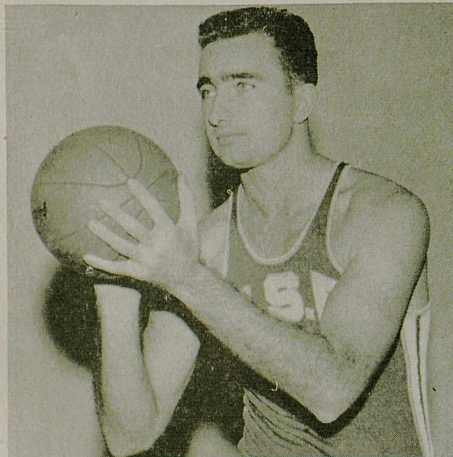
ONE thinks of the also rans as a group of nags ready for the pasture, but not so in the case of the National Collegiate Basketball Championship. While three of this year's crop of All-Americans — Guy Rodgers of Temple, Elgin Baylor of Seattle and Bob Boozer of Kansas State — led their teams to the championship round, no fewer than seven other all-Americans were sidelined in first-round and regional play. These were: Oscar Robertson of Cincinnati, Tom Hennon of Pittsburgh, Lloyd Sharrar of West Virginia, Archie Dees of Indiana, Mike Farmer of San Francisco, Tom Hawkins of Notre Dame and Jerry West of North Carolina. Included in the original starting field of 24 teams were four of everybody's all-Americans, 8 of the United Press' top 10, and 10 of every first 15.

* * * *

The 1958 National Collegiate Basketball Championship field included the greatest concentration of top scorers in history with six of the nation's top 13, five of these with better than 25-point averages. Included in the field were: 1. Oscar Robertson, Cincinnati; 2. Elgin Baylor, Seattle; 7. Tom Hennon, Pittsburgh; 9. Archie Dees, Indiana; 11. Tom Hawkins, Notre Dame; 13. Wayne Embry, Miami of Ohio. Robertson and Baylor each averaged better than 30 points. Not since 1949 has the Championship boasted the nation's two top scorers. Tony Lavelli of Yale and Paul Arizin of Villanova, ranked first and second in 1949, competed in that tournament.

* * * *

And, the 1958 Championship field included more institutions with titular experience than any other Championship. Five former champions who accounted for 10 of the 19 team titles awarded were in the running for the 1958 crown. Kentucky, with three, headed the list followed by San Francisco, Oklahoma State and Indiana, each with two, and Wyoming, with one.



MOST VALUABLE PLAYER AWARD

1940 Marvin Huffman, Indiana	1949 Alex Groza, Kentucky
1941 John Kotz, Wisconsin	1950 Irwin Dambrot, C.C.N.Y.
1942 Howard Dallmar, Stanford	1951 None selected
1943 Ken Sailors, Wyoming	1952 Clyde Lovellette, Kansas
1944 Arnold Ferrin, Utah	1953 B. H. Born, Kansas
1945 Bob Kurland, Okla. A&M	1954 Tom Gola, LaSalle
1946 Bob Kurland, Okla. A&M	1955 Bill Russell, San Francisco
1947 George Kaftan, Holy Cross	1956 Hal Lear, Temple
1948 Alex Groza, Kentucky	1957 Wilton Chamberlain, Kansas

COACHES OF TEAM CHAMPIONS

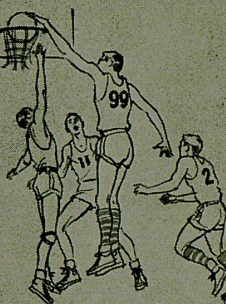
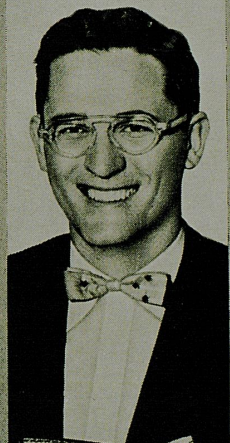
1939 Howard Hobson, Oregon	1949 Adolph Rupp, Kentucky
1940 Branch McCracken, Indiana	1950 Nat Holman, C.C.N.Y.
1941 Harold Foster, Wisconsin	1951 Adolph Rupp, Kentucky
1942 Everett Dean, Stanford	1952 Forrest C. Allen, Kansas
1943 Everett Shelton, Wyoming	1953 Branch McCracken, Indiana
1944 Vadal Peterson, Utah	1954 Kenneth B. Loeffler, LaSalle
1945 Henry Iba, Oklahoma A&M	1955 Phil Woolpert, San Francisco
1946 Henry Iba, Oklahoma A&M	1956 Phil Woolpert, San Francisco
1947 Alvin F. Julian, Holy Cross	1957 Frank McGuire, North Carolina
1948 Adolph Rupp, Kentucky	



Three of the seven all-Americans sidelined in first-round and regional play of the 1958 National Collegiate Basketball Championship are, top to bottom; Cincinnati's Oscar Robertson, the nation's No. 1 scorer with a 34-plus average; Mike Farmer, University of San Francisco, and Lloyd Sharrar, West Virginia University.

Mr. Basketball George Mikan, "Old 99" says,

**"U. S. Pro-Keds
are a 9-point favorite"**



1. Patented PowerLift*
2. Molded Concave Suction Sole
3. Shockproof Arch Cushion
4. Full-Cushioned Insole
5. Extra-Thick Heel Cushion
6. Scientific Foot-Conforming Last
7. Extra-Wide Tongue
8. Ventilating Eyelets
9. Loose-Lined Uppers

Never before has any basketball shoe offered so many scientifically designed features to increase player safety, sure-footedness and comfort. That's why U. S. Pro-Keds are the odds-on favorite of coaches, physical educators and trainers throughout the country. Pro-Keds protect the player against severe shock with an extra-thick heel cushion, a full-cushioned insole and a shockproof arch cushion. They allow safer starts, surer stops with an even-wearing molded suction sole. And now, with patented PowerLift—a firm elastic harness that keeps foot and shoe together—Pro-Keds actually let the player use all of his native speed and maneuverability with maximum safety.



*Optional—also available in "Low-Cut"

The Shoe of Champions



United States Rubber

Rockefeller Center, New York 20, N. Y.

You'll be sittin' on top of the world when you change to **L&M**



Smokes cleaner

Tastes best

You live more when you Live Modern!

Light into that **L&M** Live Modern flavor

Only L&M gives you this filter fact - the patent number on every pack.....



This is it ...

Free up! Freshen up your taste! Put yourself behind the pleasure end of an L&M. That's when you live the most... get the full enjoyment you deserve in your cigarette. L&M gives you the flavor, the good rich taste of the Southland's finest cigarette tobaccos.

the pleasure end of your L&M... the patented Miracle Tip... pure white inside, pure white outside... as a filter should be for cleaner, better smoking... modern smoking at its best. Your choice... smoke L&M's in BOX or PACK.

© Liggett & Myers Tobacco Company

Athletics
Basketball Programs
1928/29 1958/59