

Ohio River

Insurance Maps of Henderson Kentucky

PUBLISHED BY THE SANBORN MAP COMPANY 11 Broadway, New York

SCALE 50 FT. TO AN INCH
1913

Copyright, 1913, by the Sanborn Map Co. C. O. F. 25403

Population 17,000 - Prevailing Winds, So. West.

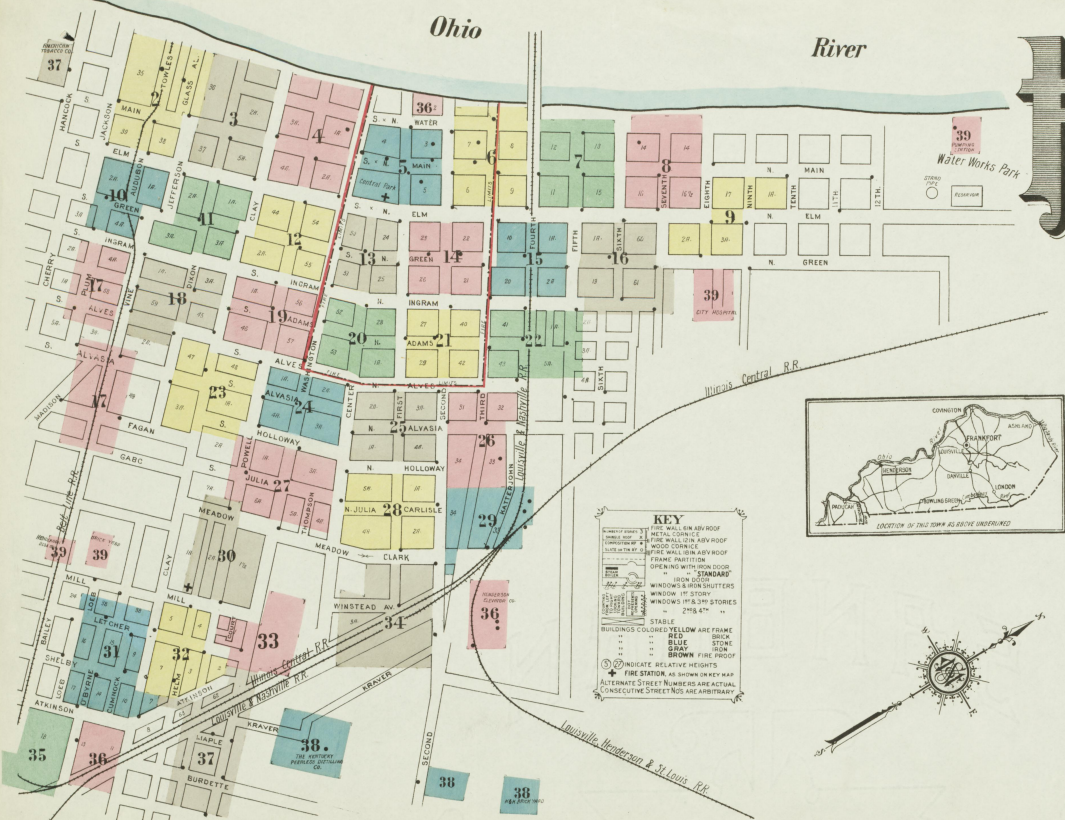
WATER FACILITIES

Gravity system of water works constructed in 1852. Water supply from Ohio River. Pressure of 20 million gals. capacity, elevated 20 ft. above business section, used for domestic purposes and giving a pressure of 35 lbs. Stand pipe of 300,000 gals. capacity situated 200 ft. above business section, which gives a fire pressure of 75 lbs. per sq. inch.

FIRE DEPARTMENT

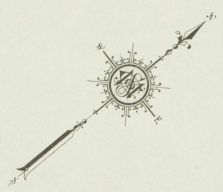
22 regular paid men. Light horses. One chemical engine with two 50 gall. tanks. One hose wagon with three chemical extinguishers. One hose wagon two hose reels. One truck & ladder. 4000 ft. hose.

Grades level. Streets Macadamized. Public lights electric.

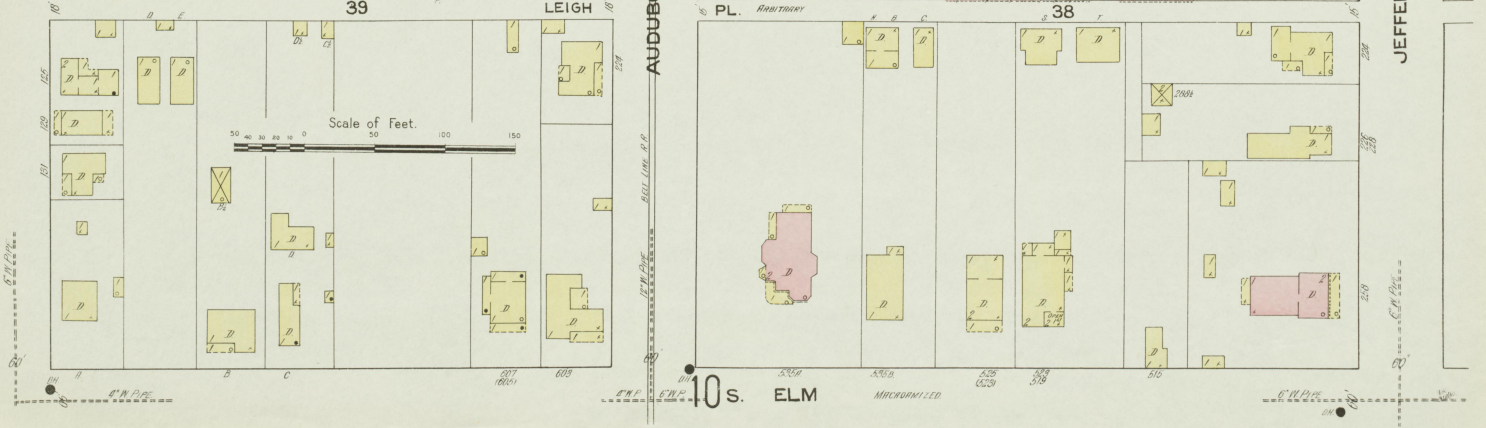
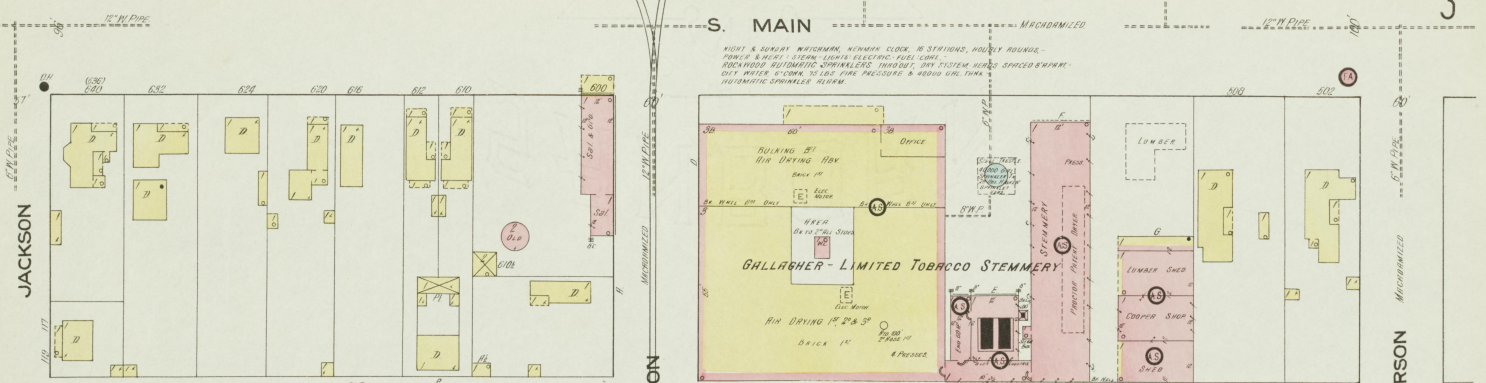
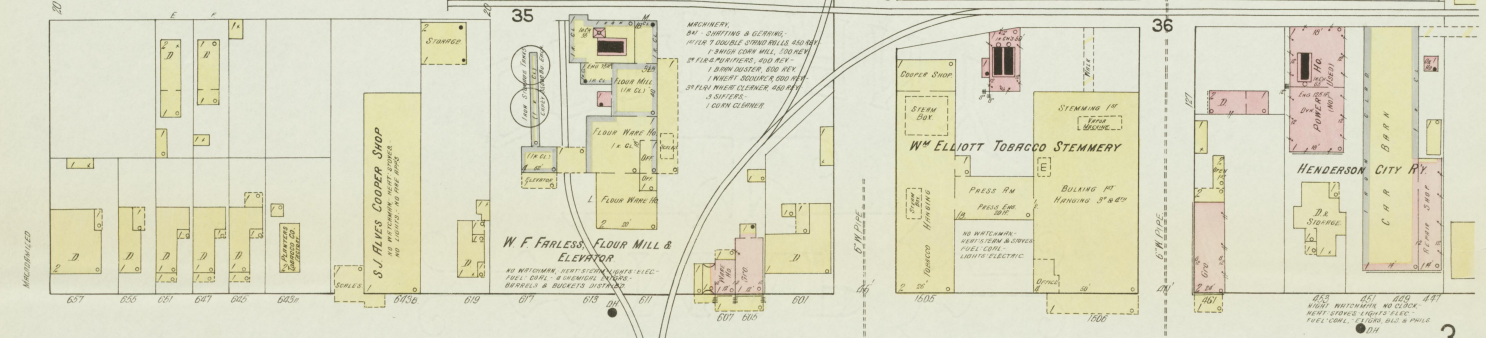
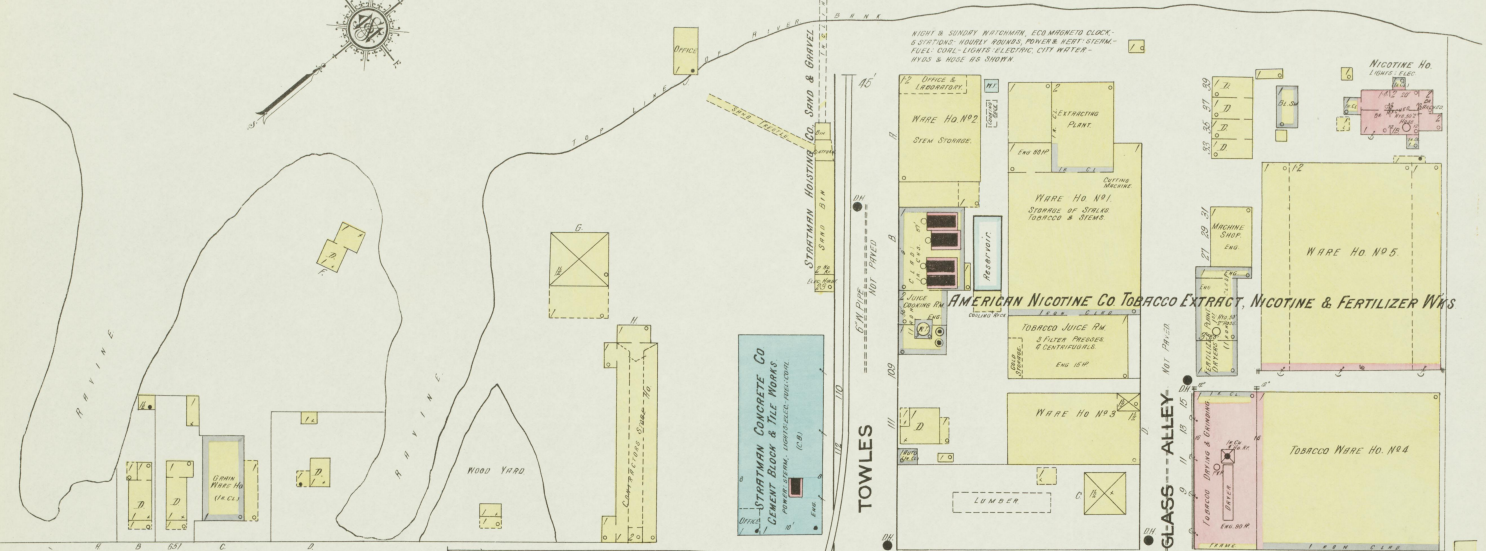


KEY

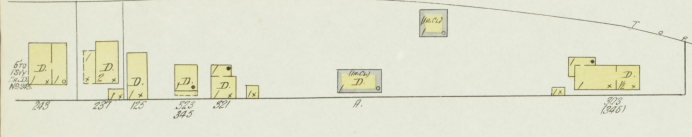
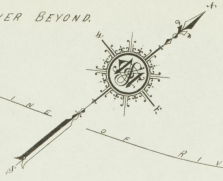
ROOFING: METAL CORNICE, METAL WALLS, METAL ROOF, OPENING WITH WOOD DOOR, HIGH CHIMNEY, WINDOWS SHUTTERS, WINDOWS 12x12, WINDOWS 12x14, WINDOWS 12x16, WINDOWS 12x18, WINDOWS 12x20, WINDOWS 12x24, WINDOWS 12x30, WINDOWS 12x36, WINDOWS 12x42, WINDOWS 12x48, WINDOWS 12x54, WINDOWS 12x60, WINDOWS 12x66, WINDOWS 12x72, WINDOWS 12x78, WINDOWS 12x84, WINDOWS 12x90, WINDOWS 12x96, WINDOWS 12x102, WINDOWS 12x108, WINDOWS 12x114, WINDOWS 12x120, WINDOWS 12x126, WINDOWS 12x132, WINDOWS 12x138, WINDOWS 12x144, WINDOWS 12x150, WINDOWS 12x156, WINDOWS 12x162, WINDOWS 12x168, WINDOWS 12x174, WINDOWS 12x180, WINDOWS 12x186, WINDOWS 12x192, WINDOWS 12x198, WINDOWS 12x204, WINDOWS 12x210, WINDOWS 12x216, WINDOWS 12x222, WINDOWS 12x228, WINDOWS 12x234, WINDOWS 12x240, WINDOWS 12x246, WINDOWS 12x252, WINDOWS 12x258, WINDOWS 12x264, WINDOWS 12x270, WINDOWS 12x276, WINDOWS 12x282, WINDOWS 12x288, WINDOWS 12x294, WINDOWS 12x300, WINDOWS 12x306, WINDOWS 12x312, WINDOWS 12x318, WINDOWS 12x324, WINDOWS 12x330, WINDOWS 12x336, WINDOWS 12x342, WINDOWS 12x348, WINDOWS 12x354, WINDOWS 12x360, WINDOWS 12x366, WINDOWS 12x372, WINDOWS 12x378, WINDOWS 12x384, WINDOWS 12x390, WINDOWS 12x396, WINDOWS 12x402, WINDOWS 12x408, WINDOWS 12x414, WINDOWS 12x420, WINDOWS 12x426, WINDOWS 12x432, WINDOWS 12x438, WINDOWS 12x444, WINDOWS 12x450, WINDOWS 12x456, WINDOWS 12x462, WINDOWS 12x468, WINDOWS 12x474, WINDOWS 12x480, WINDOWS 12x486, WINDOWS 12x492, WINDOWS 12x498, WINDOWS 12x504, WINDOWS 12x510, WINDOWS 12x516, WINDOWS 12x522, WINDOWS 12x528, WINDOWS 12x534, WINDOWS 12x540, WINDOWS 12x546, WINDOWS 12x552, WINDOWS 12x558, WINDOWS 12x564, WINDOWS 12x570, WINDOWS 12x576, WINDOWS 12x582, WINDOWS 12x588, WINDOWS 12x594, WINDOWS 12x600, WINDOWS 12x606, WINDOWS 12x612, WINDOWS 12x618, WINDOWS 12x624, WINDOWS 12x630, WINDOWS 12x636, WINDOWS 12x642, WINDOWS 12x648, WINDOWS 12x654, WINDOWS 12x660, WINDOWS 12x666, WINDOWS 12x672, WINDOWS 12x678, WINDOWS 12x684, WINDOWS 12x690, WINDOWS 12x696, WINDOWS 12x702, WINDOWS 12x708, WINDOWS 12x714, WINDOWS 12x720, WINDOWS 12x726, WINDOWS 12x732, WINDOWS 12x738, WINDOWS 12x744, WINDOWS 12x750, WINDOWS 12x756, WINDOWS 12x762, WINDOWS 12x768, WINDOWS 12x774, WINDOWS 12x780, WINDOWS 12x786, WINDOWS 12x792, WINDOWS 12x798, WINDOWS 12x804, WINDOWS 12x810, WINDOWS 12x816, WINDOWS 12x822, WINDOWS 12x828, WINDOWS 12x834, WINDOWS 12x840, WINDOWS 12x846, WINDOWS 12x852, WINDOWS 12x858, WINDOWS 12x864, WINDOWS 12x870, WINDOWS 12x876, WINDOWS 12x882, WINDOWS 12x888, WINDOWS 12x894, WINDOWS 12x900, WINDOWS 12x906, WINDOWS 12x912, WINDOWS 12x918, WINDOWS 12x924, WINDOWS 12x930, WINDOWS 12x936, WINDOWS 12x942, WINDOWS 12x948, WINDOWS 12x954, WINDOWS 12x960, WINDOWS 12x966, WINDOWS 12x972, WINDOWS 12x978, WINDOWS 12x984, WINDOWS 12x990, WINDOWS 12x996, WINDOWS 13000-13200, WINDOWS 13200-13400, WINDOWS 13400-13600, WINDOWS 13600-13800, WINDOWS 13800-14000, WINDOWS 14000-14200, WINDOWS 14200-14400, WINDOWS 14400-14600, WINDOWS 14600-14800, WINDOWS 14800-15000, WINDOWS 15000-15200, WINDOWS 15200-15400, WINDOWS 15400-15600, WINDOWS 15600-15800, WINDOWS 15800-16000, WINDOWS 16000-16200, WINDOWS 16200-16400, WINDOWS 16400-16600, WINDOWS 16600-16800, WINDOWS 16800-17000, WINDOWS 17000-17200, WINDOWS 17200-17400, WINDOWS 17400-17600, WINDOWS 17600-17800, WINDOWS 17800-18000, WINDOWS 18000-18200, WINDOWS 18200-18400, WINDOWS 18400-18600, WINDOWS 18600-18800, WINDOWS 18800-19000, WINDOWS 19000-19200, WINDOWS 19200-19400, WINDOWS 19400-19600, WINDOWS 19600-19800, WINDOWS 19800-20000, WINDOWS 20000-20200, WINDOWS 20200-20400, WINDOWS 20400-20600, WINDOWS 20600-20800, WINDOWS 20800-21000, WINDOWS 21000-21200, WINDOWS 21200-21400, WINDOWS 21400-21600, WINDOWS 21600-21800, WINDOWS 21800-22000, WINDOWS 22000-22200, WINDOWS 22200-22400, WINDOWS 22400-22600, WINDOWS 22600-22800, WINDOWS 22800-23000, WINDOWS 23000-23200, WINDOWS 23200-23400, WINDOWS 23400-23600, WINDOWS 23600-23800, WINDOWS 23800-24000, WINDOWS 24000-24200, WINDOWS 24200-24400, WINDOWS 24400-24600, WINDOWS 24600-24800, WINDOWS 24800-25000, WINDOWS 25000-25200, WINDOWS 25200-25400, WINDOWS 25400-25600, WINDOWS 25600-25800, WINDOWS 25800-26000, WINDOWS 26000-26200, WINDOWS 26200-26400, WINDOWS 26400-26600, WINDOWS 26600-26800, WINDOWS 26800-27000, WINDOWS 27000-27200, WINDOWS 27200-27400, WINDOWS 27400-27600, WINDOWS 27600-27800, WINDOWS 27800-28000, WINDOWS 28000-28200, WINDOWS 28200-28400, WINDOWS 28400-28600, WINDOWS 28600-28800, WINDOWS 28800-29000, WINDOWS 29000-29200, WINDOWS 29200-29400, WINDOWS 29400-29600, WINDOWS 29600-29800, WINDOWS 29800-30000, WINDOWS 30000-30200, WINDOWS 30200-30400, WINDOWS 30400-30600, WINDOWS 30600-30800, WINDOWS 30800-31000, WINDOWS 31000-31200, WINDOWS 31200-31400, WINDOWS 31400-31600, WINDOWS 31600-31800, WINDOWS 31800-32000, WINDOWS 32000-32200, WINDOWS 32200-32400, WINDOWS 32400-32600, WINDOWS 32600-32800, WINDOWS 32800-33000, WINDOWS 33000-33200, WINDOWS 33200-33400, WINDOWS 33400-33600, WINDOWS 33600-33800, WINDOWS 33800-34000, WINDOWS 34000-34200, WINDOWS 34200-34400, WINDOWS 34400-34600, WINDOWS 34600-34800, WINDOWS 34800-35000, WINDOWS 35000-35200, WINDOWS 35200-35400, WINDOWS 35400-35600, WINDOWS 35600-35800, WINDOWS 35800-36000, WINDOWS 36000-36200, WINDOWS 36200-36400, WINDOWS 36400-36600, WINDOWS 36600-36800, WINDOWS 36800-37000, WINDOWS 37000-37200, WINDOWS 37200-37400, WINDOWS 37400-37600, WINDOWS 37600-37800, WINDOWS 37800-38000, WINDOWS 38000-38200, WINDOWS 38200-38400, WINDOWS 38400-38600, WINDOWS 38600-38800, WINDOWS 38800-39000, WINDOWS 39000-39200, WINDOWS 39200-39400, WINDOWS 39400-39600, WINDOWS 39600-39800, WINDOWS 39800-40000, WINDOWS 40000-40200, WINDOWS 40200-40400, WINDOWS 40400-40600, WINDOWS 40600-40800, WINDOWS 40800-41000, WINDOWS 41000-41200, WINDOWS 41200-41400, WINDOWS 41400-41600, WINDOWS 41600-41800, WINDOWS 41800-42000, WINDOWS 42000-42200, WINDOWS 42200-42400, WINDOWS 42400-42600, WINDOWS 42600-42800, WINDOWS 42800-43000, WINDOWS 43000-43200, WINDOWS 43200-43400, WINDOWS 43400-43600, WINDOWS 43600-43800, WINDOWS 43800-44000, WINDOWS 44000-44200, WINDOWS 44200-44400, WINDOWS 44400-44600, WINDOWS 44600-44800, WINDOWS 44800-45000, WINDOWS 45000-45200, WINDOWS 45200-45400, WINDOWS 45400-45600, WINDOWS 45600-45800, WINDOWS 45800-46000, WINDOWS 46000-46200, WINDOWS 46200-46400, WINDOWS 46400-46600, WINDOWS 46600-46800, WINDOWS 46800-47000, WINDOWS 47000-47200, WINDOWS 47200-47400, WINDOWS 47400-47600, WINDOWS 47600-47800, WINDOWS 47800-48000, WINDOWS 48000-48200, WINDOWS 48200-48400, WINDOWS 48400-48600, WINDOWS 48600-48800, WINDOWS 48800-49000, WINDOWS 49000-49200, WINDOWS 49200-49400, WINDOWS 49400-49600, WINDOWS 49600-49800, WINDOWS 49800-50000, WINDOWS 50000-50200, WINDOWS 50200-50400, WINDOWS 50400-50600, WINDOWS 50600-50800, WINDOWS 50800-51000, WINDOWS 51000-51200, WINDOWS 51200-51400, WINDOWS 51400-51600, WINDOWS 51600-51800, WINDOWS 51800-52000, WINDOWS 52000-52200, WINDOWS 52200-52400, WINDOWS 52400-52600, WINDOWS 52600-52800, WINDOWS 52800-53000, WINDOWS 53000-53200, WINDOWS 53200-53400, WINDOWS 53400-53600, WINDOWS 53600-53800, WINDOWS 53800-54000, WINDOWS 54000-54200, WINDOWS 54200-54400, WINDOWS 54400-54600, WINDOWS 54600-54800, WINDOWS 54800-55000, WINDOWS 55000-55200, WINDOWS 55200-55400, WINDOWS 55400-55600, WINDOWS 55600-55800, WINDOWS 55800-56000, WINDOWS 56000-56200, WINDOWS 56200-56400, WINDOWS 56400-56600, WINDOWS 56600-56800, WINDOWS 56800-57000, WINDOWS 57000-57200, WINDOWS 57200-57400, WINDOWS 57400-57600, WINDOWS 57600-57800, WINDOWS 57800-58000, WINDOWS 58000-58200, WINDOWS 58200-58400, WINDOWS 58400-58600, WINDOWS 58600-58800, WINDOWS 58800-59000, WINDOWS 59000-59200, WINDOWS 59200-59400, WINDOWS 59400-59600, WINDOWS 59600-59800, WINDOWS 59800-60000, WINDOWS 60000-60200, WINDOWS 60200-60400, WINDOWS 60400-60600, WINDOWS 60600-60800, WINDOWS 60800-61000, WINDOWS 61000-61200, WINDOWS 61200-61400, WINDOWS 61400-61600, WINDOWS 61600-61800, WINDOWS 61800-62000, WINDOWS 62000-62200, WINDOWS 62200-62400, WINDOWS 62400-62600, WINDOWS 62600-62800, WINDOWS 62800-63000, WINDOWS 63000-63200, WINDOWS 63200-63400, WINDOWS 63400-63600, WINDOWS 63600-63800, WINDOWS 63800-64000, WINDOWS 64000-64200, WINDOWS 64200-64400, WINDOWS 64400-64600, WINDOWS 64600-64800, WINDOWS 64800-65000, WINDOWS 65000-65200, WINDOWS 65200-65400, WINDOWS 65400-65600, WINDOWS 65600-65800, WINDOWS 65800-66000, WINDOWS 66000-66200, WINDOWS 66200-66400, WINDOWS 66400-66600, WINDOWS 66600-66800, WINDOWS 66800-67000, WINDOWS 67000-67200, WINDOWS 67200-67400, WINDOWS 67400-67600, WINDOWS 67600-67800, WINDOWS 67800-68000, WINDOWS 68000-68200, WINDOWS 68200-68400, WINDOWS 68400-68600, WINDOWS 68600-68800, WINDOWS 68800-69000, WINDOWS 69000-69200, WINDOWS 69200-69400, WINDOWS 69400-69600, WINDOWS 69600-69800, WINDOWS 69800-70000, WINDOWS 70000-70200, WINDOWS 70200-70400, WINDOWS 70400-70600, WINDOWS 70600-70800, WINDOWS 70800-71000, WINDOWS 71000-71200, WINDOWS 71200-71400, WINDOWS 71400-71600, WINDOWS 71600-71800, WINDOWS 71800-72000, WINDOWS 72000-72200, WINDOWS 72200-72400, WINDOWS 72400-72600, WINDOWS 72600-72800, WINDOWS 72800-73000, WINDOWS 73000-73200, WINDOWS 73200-73400, WINDOWS 73400-73600, WINDOWS 73600-73800, WINDOWS 73800-74000, WINDOWS 74000-74200, WINDOWS 74200-74400, WINDOWS 74400-74600, WINDOWS 74600-74800, WINDOWS 74800-75000, WINDOWS 75000-75200, WINDOWS 75200-75400, WINDOWS 75400-75600, WINDOWS 75600-75800, WINDOWS 75800-76000, WINDOWS 76000-76200, WINDOWS 76200-76400, WINDOWS 76400-76600, WINDOWS 76600-76800, WINDOWS 76800-77000, WINDOWS 77000-77200, WINDOWS 77200-77400, WINDOWS 77400-77600, WINDOWS 77600-77800, WINDOWS 77800-78000, WINDOWS 78000-78200, WINDOWS 78200-78400, WINDOWS 78400-78600, WINDOWS 78600-78800, WINDOWS 78800-79000, WINDOWS 79000-79200, WINDOWS 79200-79400, WINDOWS 79400-79600, WINDOWS 79600-79800, WINDOWS 79800-80000, WINDOWS 80000-80200, WINDOWS 80200-80400, WINDOWS 80400-80600, WINDOWS 80600-80800, WINDOWS 80800-81000, WINDOWS 81000-81200, WINDOWS 81200-81400, WINDOWS 81400-81600, WINDOWS 81600-81800, WINDOWS 81800-82000, WINDOWS 82000-82200, WINDOWS 82200-82400, WINDOWS 82400-82600, WINDOWS 82600-82800, WINDOWS 82800-83000, WINDOWS 83000-83200, WINDOWS 83200-83400, WINDOWS 83400-83600, WINDOWS 83600-83800, WINDOWS 83800-84000, WINDOWS 84000-84200, WINDOWS 84200-84400, WINDOWS 84400-84600, WINDOWS 84600-84800, WINDOWS 84800-85000, WINDOWS 85000-85200, WINDOWS 85200-85400, WINDOWS 85400-85600, WINDOWS 85600-85800, WINDOWS 85800-86000, WINDOWS 86000-86200, WINDOWS 86200-86400, WINDOWS 86400-86600, WINDOWS 86600-86800, WINDOWS 86800-87000, WINDOWS 87000-87200, WINDOWS 87200-87400, WINDOWS 87400-87600, WINDOWS 87600-87800, WINDOWS 87800-88000, WINDOWS 88000-88200, WINDOWS 88200-88400, WINDOWS 88400-88600, WINDOWS 88600-88800, WINDOWS 88800-89000, WINDOWS 89000-89200, WINDOWS 89200-89400, WINDOWS 89400-89600, WINDOWS 89600-89800, WINDOWS 89800-90000, WINDOWS 90000-90200, WINDOWS 90200-90400, WINDOWS 90400-90600, WINDOWS 90600-90800, WINDOWS 90800-91000, WINDOWS 91000-91200, WINDOWS 91200-91400, WINDOWS 91400-91600, WINDOWS 91600-91800, WINDOWS 91800-92000, WINDOWS 92000-92200, WINDOWS 92200-92400, WINDOWS 92400-92600, WINDOWS 92600-92800, WINDOWS 92800-93000, WINDOWS 93000-93200, WINDOWS 93200-93400, WINDOWS 93400-93600, WINDOWS 93600-93800, WINDOWS 93800-94000, WINDOWS 94000-94200, WINDOWS 94200-94400, WINDOWS 94400-94600, WINDOWS 94600-94800, WINDOWS 94800-95000, WINDOWS 95000-95200, WINDOWS 95200-95400, WINDOWS 95400-95600, WINDOWS 95600-95800, WINDOWS 95800-96000, WINDOWS 96000-96200, WINDOWS 96200-96400, WINDOWS 96400-96600, WINDOWS 96600-96800, WINDOWS 96800-97000, WINDOWS 97000-97200, WINDOWS 97200-97400, WINDOWS 97400-97600, WINDOWS 97600-97800, WINDOWS 97800-98000, WINDOWS 98000-98200, WINDOWS 98200-98400, WINDOWS 98400-98600, WINDOWS 98600-98800, WINDOWS 98800-99000, WINDOWS 99000-99200, WINDOWS 99200-99400, WINDOWS 99400-99600, WINDOWS 99600-99800, WINDOWS 99800-100000, WINDOWS 100000-100200, WINDOWS 100200-100400, WINDOWS 100400-100600, WINDOWS 100600-100800, WINDOWS 100800-101000, WINDOWS 101000-101200, WINDOWS 101200-101400, WINDOWS 101400-101600, WINDOWS 101600-101800, WINDOWS 101800-102000, WINDOWS 102000-102200, WINDOWS 102200-102400, WINDOWS 102400-102600, WINDOWS 102600-102800, WINDOWS 102800-103000, WINDOWS 103000-103200, WINDOWS 103200-103400, WINDOWS 103400-103600, WINDOWS 103600-103800, WINDOWS 103800-104000, WINDOWS 104000-104200, WINDOWS 104200-104400, WINDOWS 104400-104600, WINDOWS 104600-104800, WINDOWS 104800-105000, WINDOWS 105000-105200, WINDOWS 105200-105400, WINDOWS 105400-105600, WINDOWS 105600-105800, WINDOWS 105800-106000, WINDOWS 106000-106200, WINDOWS 106200-106400, WINDOWS 106400-106600, WINDOWS 106600-106800, WINDOWS 106800-107000, WINDOWS 107000-107200, WINDOWS 107200-107400, WINDOWS 107400-107600, WINDOWS 107600-107800, WINDOWS 107800-108000, WINDOWS 108000-108200, WINDOWS 108200-108400, WINDOWS 108400-108600, WINDOWS 108600-108800, WINDOWS 108800-109000, WINDOWS 109000-109200, WINDOWS 109200-109400, WINDOWS 109400-109600, WINDOWS 109600-109800, WINDOWS 109800-110000, WINDOWS 110000-110200, WINDOWS 110200-110400, WINDOWS 110400-110600, WINDOWS 110600-110800, WINDOWS 110800-111000, WINDOWS 111000-111200, WINDOWS 111200-111400, WINDOWS 111400-111600, WINDOWS 111600-111800, WINDOWS 111800-112000, WINDOWS 112000-112200, WINDOWS 112200-112400, WINDOWS 112400-112600, WINDOWS 112600-112800, WINDOWS 112800-113000, WINDOWS 113000-113200, WINDOWS 113200-113400, WINDOWS 113400-113600, WINDOWS 113600-113800, WINDOWS 113800-114000, WINDOWS 114000-114200, WINDOWS 114200-114400, WINDOWS 114400-114600, WINDOWS 114600-114800, WINDOWS 114800-115000, WINDOWS 115000-115200, WINDOWS 115200-115400, WINDOWS 115400-115600, WINDOWS 115600-115800, WINDOWS 115800-116000, WINDOWS 116000-116200, WINDOWS 116200-116400, WINDOWS 116400-116600, WINDOWS 116600-116800, WINDOWS 116800-117000, WINDOWS 117000-117200, WINDOWS 117200-117400, WINDOWS 117400-117600, WINDOWS 117600-117800, WINDOWS 117800-118000, WINDOWS 118000-118200, WINDOWS 118200-118400, WINDOWS 118400-118600, WINDOWS 118600-118800, WINDOWS 118800-119000, WINDOWS 119000-119200, WINDOWS 119200-119400, WINDOWS 119400-119600, WINDOWS 119600-119800, WINDOWS 119800-120000, WINDOWS 120000-120200, WINDOWS 120200-120400, WINDOWS 120400-120600, WINDOWS 120600-120800, WINDOWS 120800-121000, WINDOWS 121000-121200, WINDOWS 121200-121400, WINDOWS 121400-121600, WINDOWS 121600-121800, WINDOWS 121800-122000, WINDOWS 122000-122200, WINDOWS 122200-122400, WINDOWS 122400-122600, WINDOWS 122600-122800, WINDOWS 122800-123000, WINDOWS 123000-123200, WINDOWS 123200-123400, WINDOWS 123400-123600, WINDOWS 123600-123800, WINDOWS 123800-124000, WINDOWS 124000-124200, WINDOWS 124200-124400, WINDOWS 124400-124600, WINDOWS 124600-124800, WINDOWS 124800-125000, WINDOWS 125000-125200, WINDOWS 125200-125400, WINDOWS 125400-125600, WINDOWS 125600-125800, WINDOWS 125800-126000, WINDOWS 126000-126200, WINDOWS 126200-126400, WINDOWS 126400-126600, WINDOWS 126600-126800, WINDOWS 126800-127000, WINDOWS 127000-127200, WINDOWS 127200-127400, WINDOWS 127400-127600, WINDOWS 127600-127800, WINDOWS 127800-128000, WINDOWS 128000-128200, WINDOWS 128200-128400, WINDOWS 128400-128600, WINDOWS 128600-128800, WINDOWS 128800-129000, WINDOWS 129000-129200, WINDOWS 129200-129400, WINDOWS 129400-129600, WINDOWS 129600-129800, WINDOWS 129800-130000, WINDOWS 130000-130200, WINDOWS 130200-130400, WINDOWS 130400-130600, WINDOWS 130600-130800, WINDOWS 130800-131000, WINDOWS 131000-131200, WINDOWS 131200-131400, WINDOWS 131400-131600, WINDOWS 131600-131800, WINDOWS 131800-132000, WINDOWS 132000-132200, WINDOWS 132200-132400, WINDOWS 132400-132600, WINDOWS 132600-132800, WINDOWS 132800-133000, WINDOWS 133000-133200, WINDOWS 133200-133400, WINDOWS 133400-133600, WINDOWS 133600-133800, WINDOWS 133800-134000, WINDOWS 134000-134200, WINDOWS 134200-134400, WINDOWS 134400-134600, WINDOWS 134600-134800, WINDOWS 134800-135000, WINDOWS 135000-135200, WINDOWS 135200-135400, WINDOWS 135400-135600, WINDOWS 135600-135800, WINDOWS 135800-136000, WINDOWS 136000-136200, WINDOWS 136200-136400, WINDOWS 136400-136600, WINDOWS 136600-136800, WINDOWS 136800-137000, WINDOWS 137000-137200, WINDOWS 137200-137400, WINDOWS 137400-137600, WINDOWS 137600-137800, WINDOWS 137800-138000, WINDOWS 138000-138200, WINDOWS 138200-138400, WINDOWS 138400-138600, WINDOWS 138600-138800, WINDOWS 138800-139000, WINDOWS 139000-139200, WINDOWS 139200-139400, WINDOWS 139400-139600, WINDOWS 139600-139800, WINDOWS 139800-140000, WINDOWS 140000-140200, WINDOWS 140200-140400, WINDOWS 140400-140600, WINDOWS 140600-140800, WINDOWS 140800-141000, WINDOWS 141000-141200, WINDOWS 141200-141400, WINDOWS 141400-141600, WINDOWS 141600-141800, WINDOWS 141800-142000, WINDOWS 142000-142200, WINDOWS 142200-142400, WINDOWS 142400-142600, WINDOWS 142600-142800, WINDOWS 142800-143000, WINDOWS 143000-143200, WINDOWS 143200-143400, WINDOWS 143400-143600, WINDOWS 143600-143800, WINDOWS 143800-144000, WINDOWS 144000-144200, WINDOWS 144200-144400, WINDOWS 144400-144600, WINDOWS 144600-144800, WINDOWS 144800-145000, WINDOWS 145000-145200, WINDOWS 145200-145400, WINDOWS 145400-145600, WINDOWS 145600-145800, WINDOWS 145800-146000, WINDOWS 146000-146200, WINDOWS 146200-146400, WINDOWS 146400-146600, WINDOWS 146600-146800, WINDOWS 146800-147000, WINDOWS 147000-147200, WINDOWS 147200-147400, WINDOWS 147400-147600, WINDOWS 147600-147800, WINDOWS 147800-148000, WINDOWS 148000



OHIO RIVER BEYOND

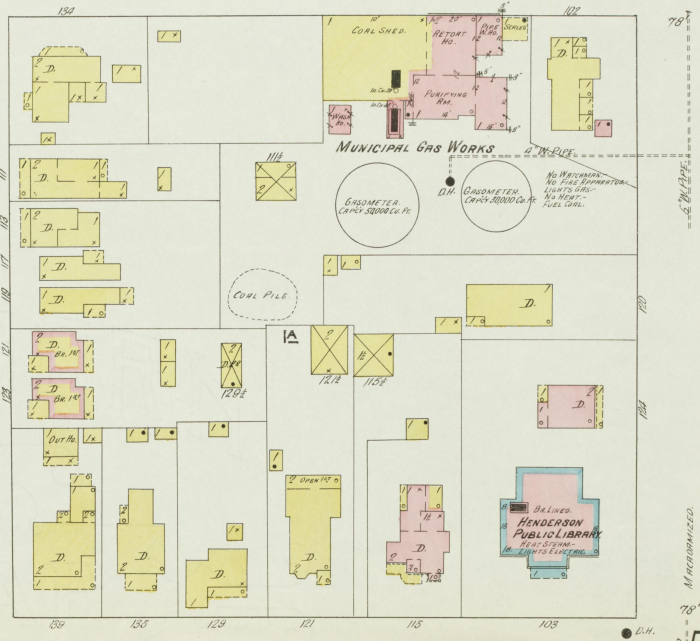
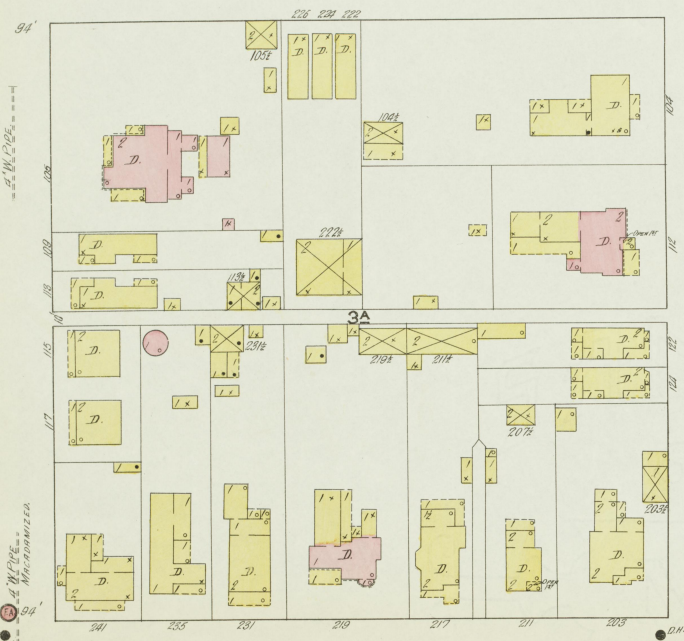


OHIO RIVER BEYOND



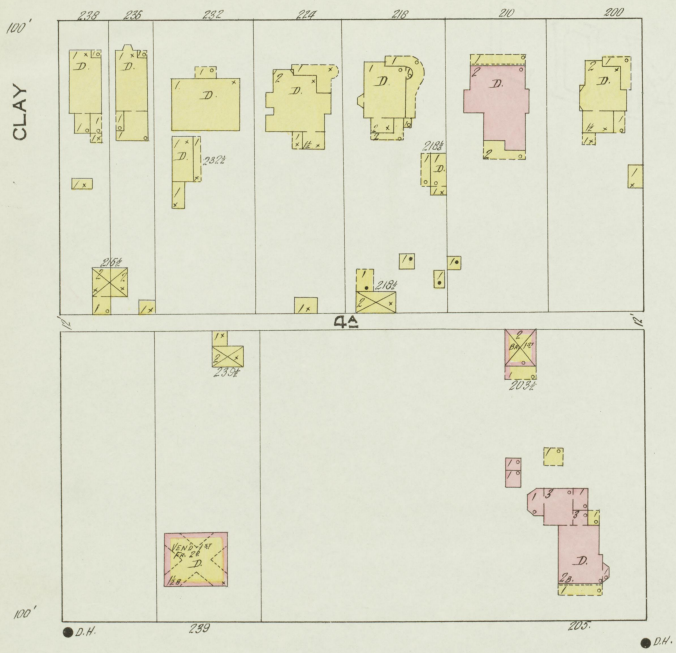
S. WATER

NOT PAVED

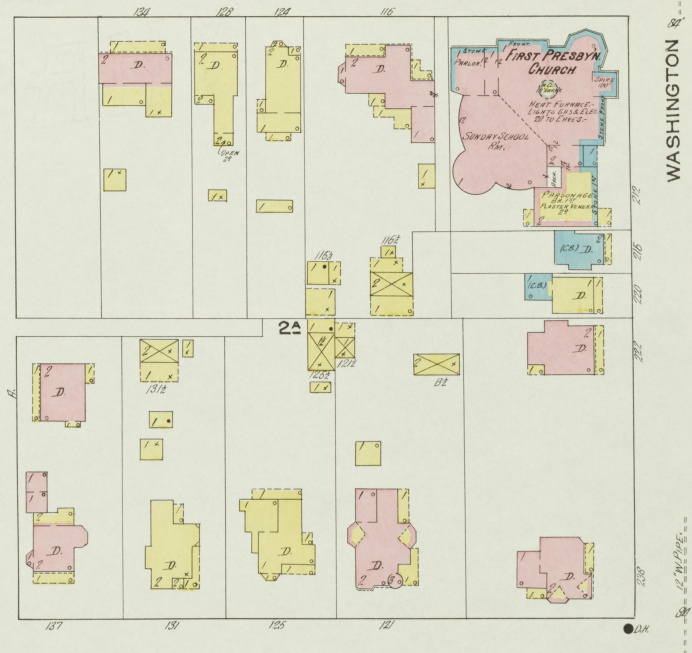


S. MAIN

MICRODAMAGED

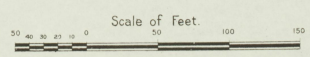


POWELL



S. ELM

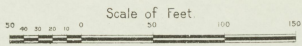
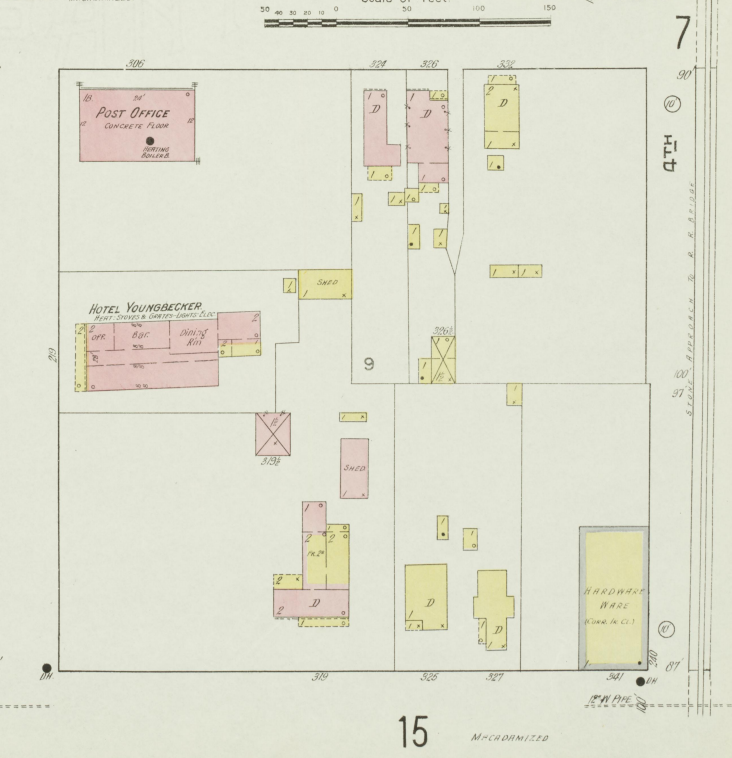
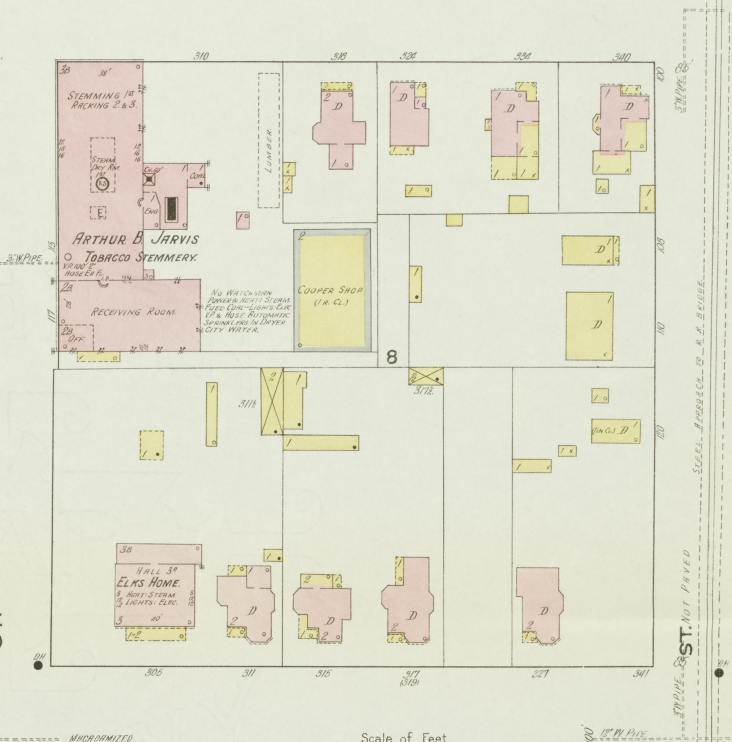
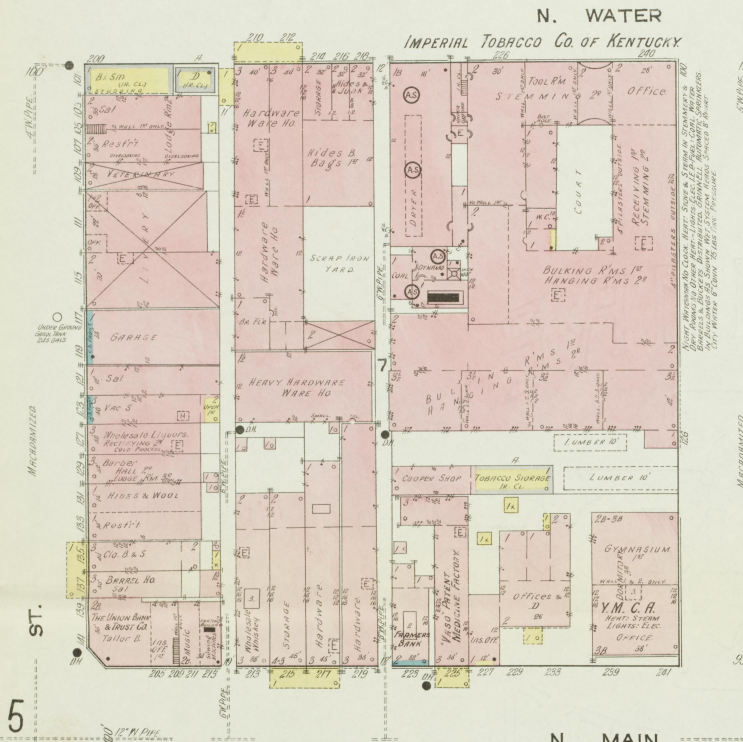
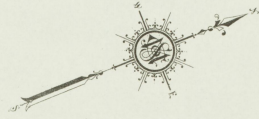
MICRODAMAGED



MAR. 1913
HENDERSON
Ky.

NO EXPOSURE TO OHIO RIVER

PAVED W H A R F



5 ST.

36

2ND

HOTEL KINGDON

14

53 ST.

3RD

HOTEL YOUNGBECKER

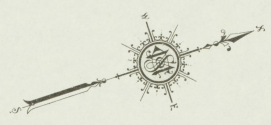
15

7

4TH

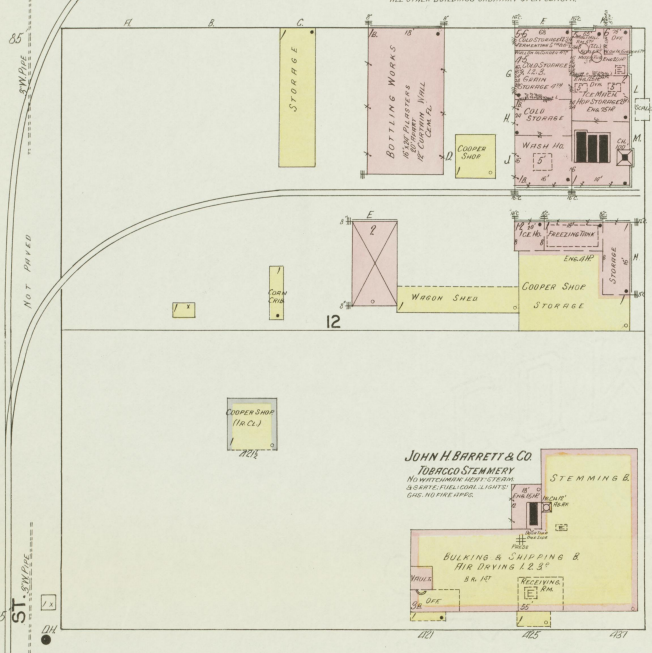
15

MAR 1913
HENDERSON
Ky.



HENDERSON BREWING CO.
NIGHT & SUNDAY WATERING - CLOCK SETTING - HOUSE
REPAIRS - WETTING - PAINTING - LIGHTS - ETC. -
BARRELS & BUCKETS - DISTILLED - OTHER FIRE APPS.
BUILDING - CONSTRUCTION
BREWING - COLD STORAGE - NO. 6 - ENR. 200. BRICK ARCHED
FLOORS ON MAIN FLOOR & CEILING OVER ROOF.
ORDINARY CONSTRUCTION
ALL OTHER BUILDINGS ORDINARY OPEN CONCRETE

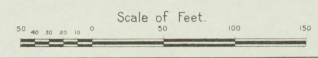
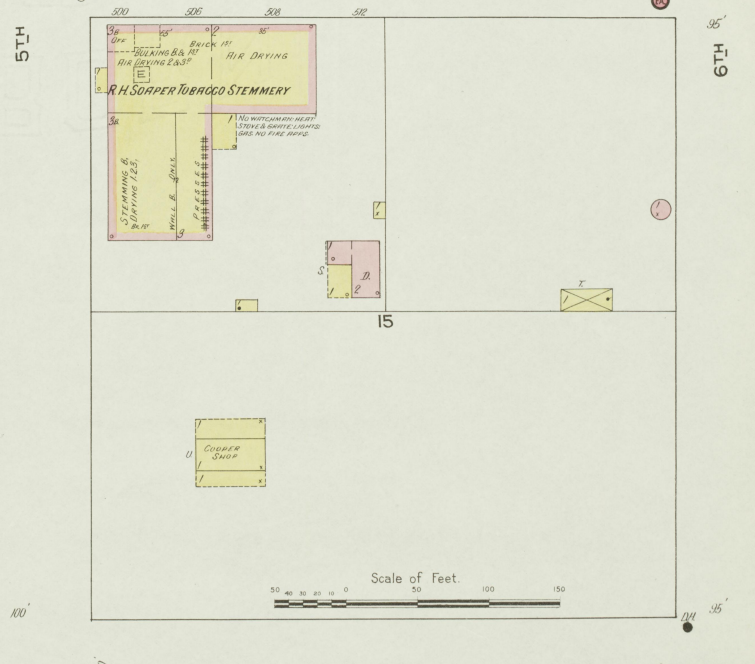
N. WATER NOT PAVED



N. MAIN

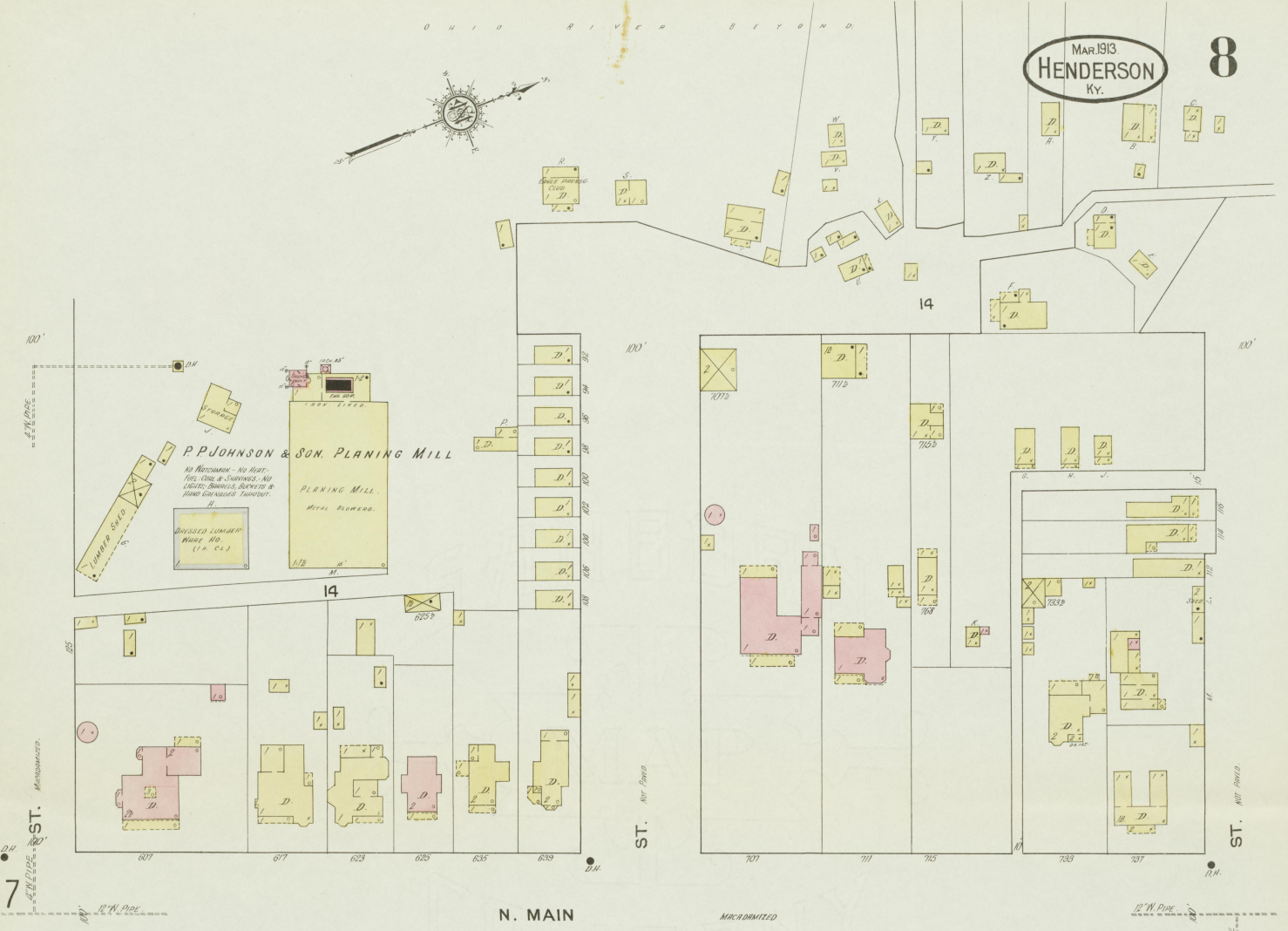
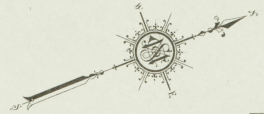
MACHROOMED

N. 15 ELM



N. 15 ELM

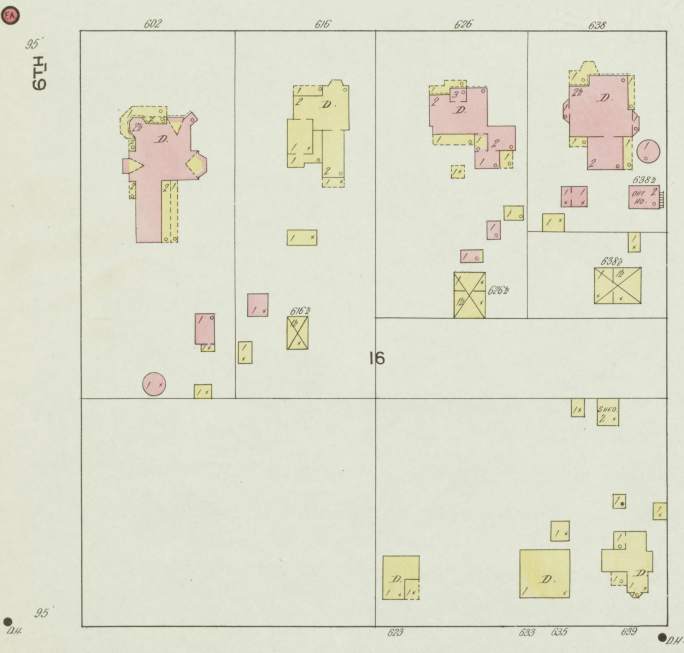
N. ELM 16



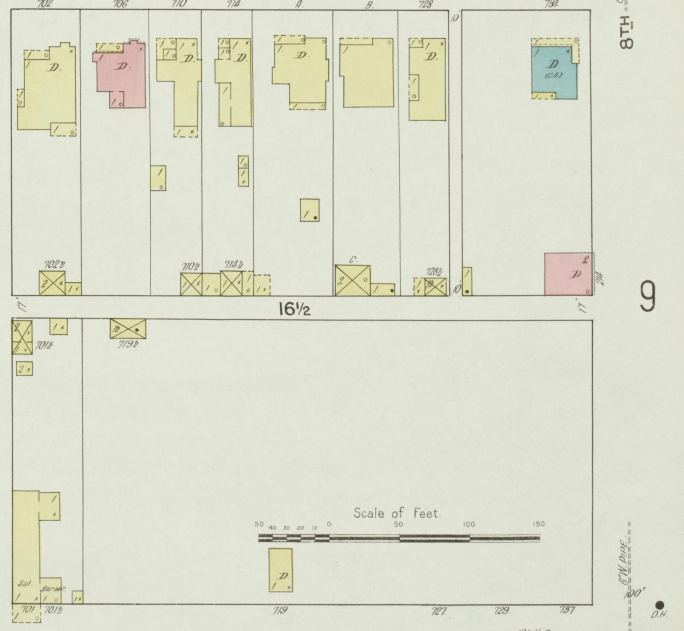
N. MAIN

MACADAMIZED

12\"/>



N. ELM



9



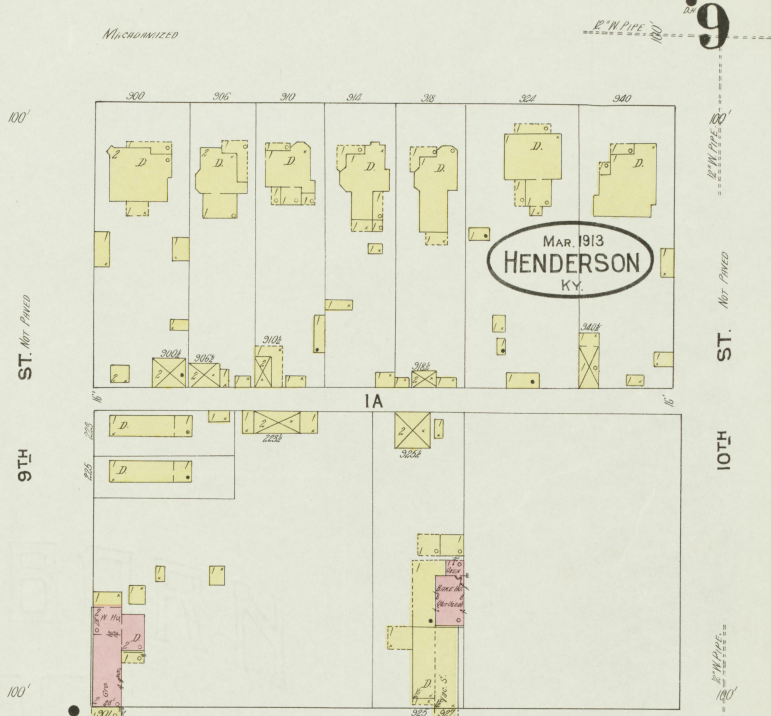
16

9

N. MAIN



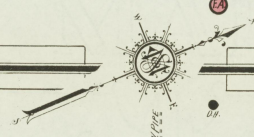
MACRODRIZED



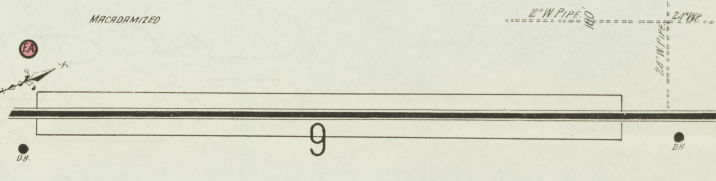
N. ELM

9

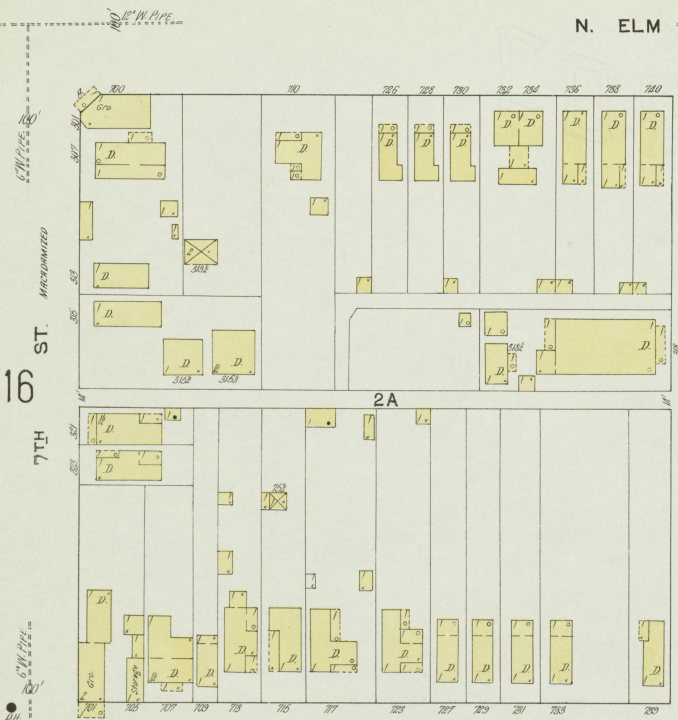
8



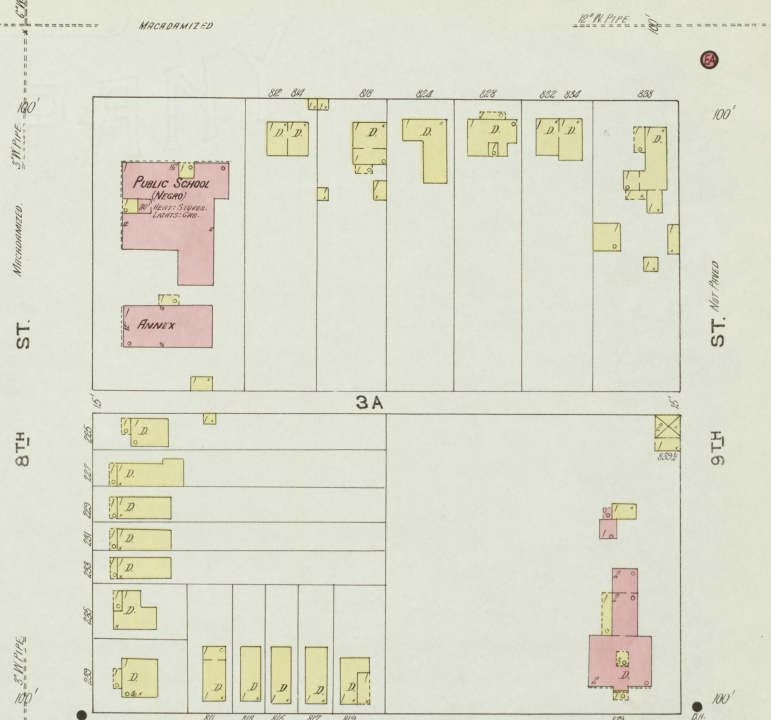
MACRODRIZED



N. ELM



MACRODRIZED

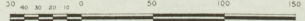


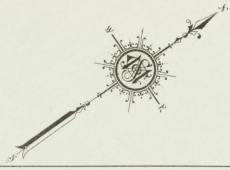
N. GREEN

16

39

Scale of Feet

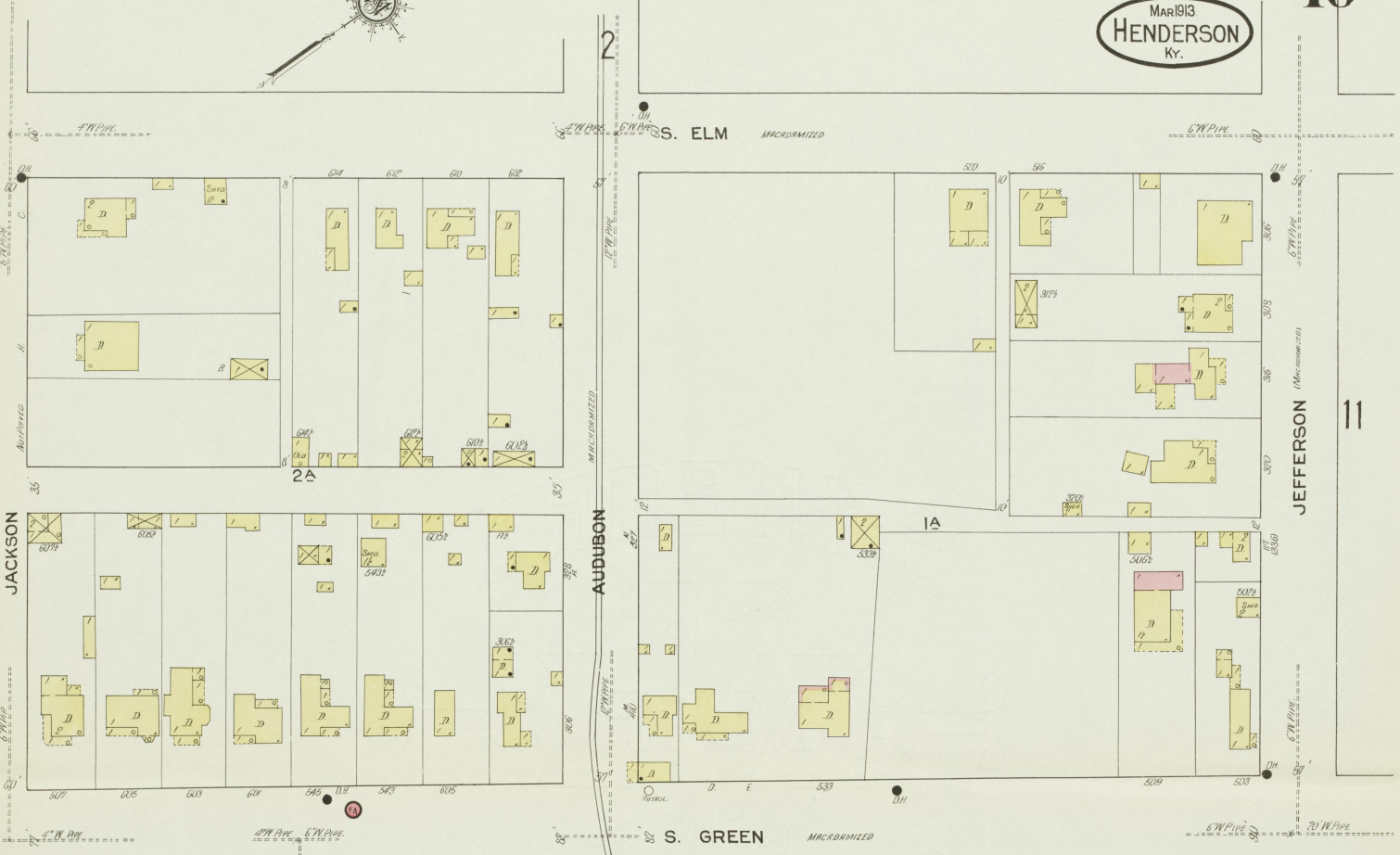




MAR 1913
HENDERSON
Ky.

10

2



JACKSON

AUBUDON

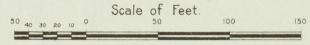
JEFFERSON (Macadamized)

11



11

17



WASHINGTON 13

12

MAR. 1913
HENDERSON
KY.

4

POWELL

19

S. ELM

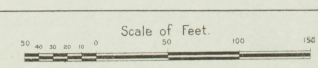
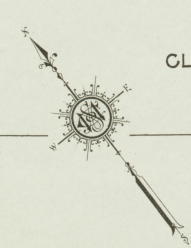
S. GREEN

S. INGRAM

THOS HODGE TOBACCO STEMMERY
Waterproof Walls, Fireproof, No Leaks, Pile & Ricketts Disturbance
Work Strong & Complete - 1 Year Only - Pile On.

CLAY

CLAY

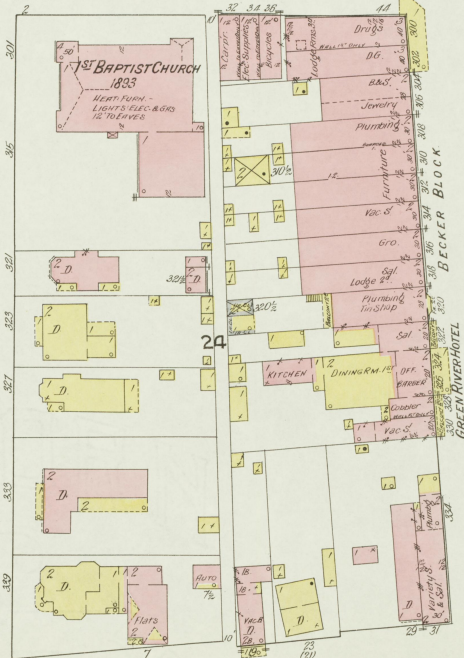
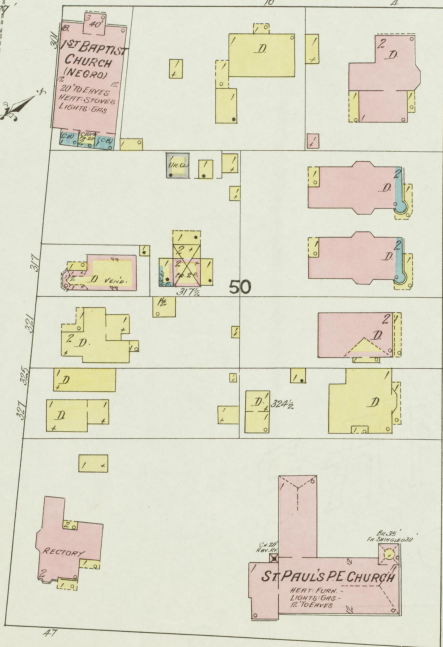


11

5

S. ELM

N. ELM



12

WASHINGTON

CENTER

ST.

14

S. GREEN

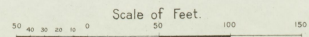
N. GREEN



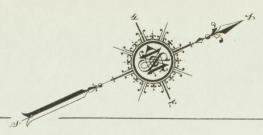
S. INGRAM

N. INGRAM

20



5



6

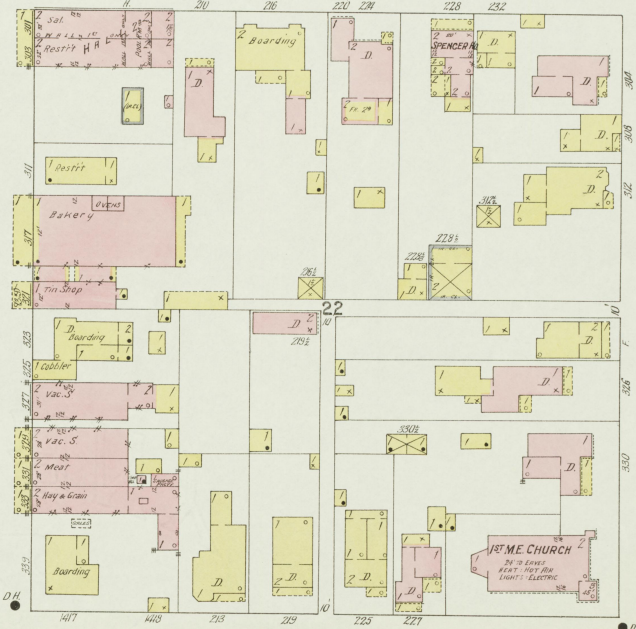
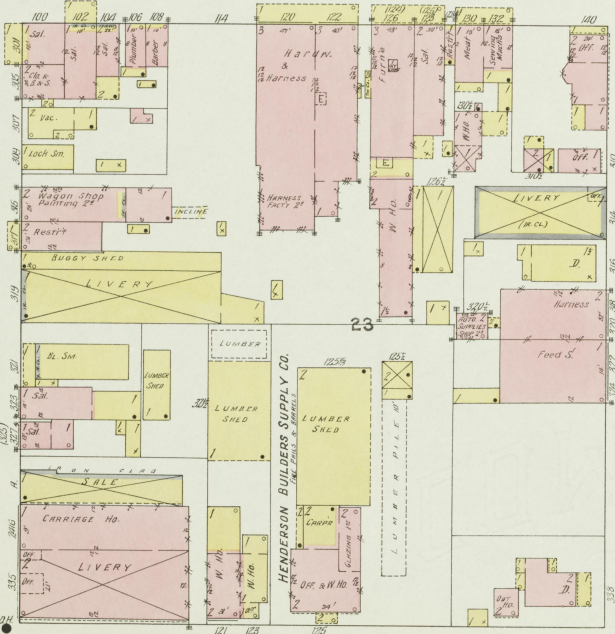
MAR 1913
HENDERSON
KY.

14

N. ELM

MICRODAMIZED

22" W.Pipe

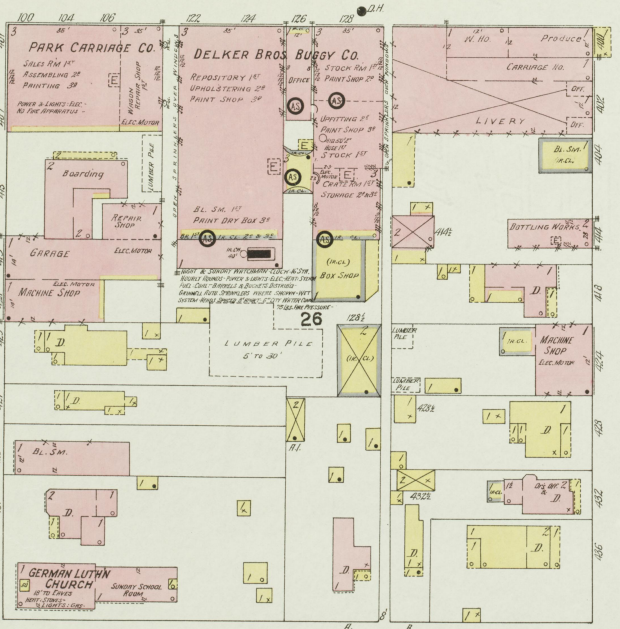


13

N. GREEN

MICRODAMIZED

24" W.Pipe



21

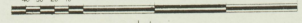
N. INGRAM

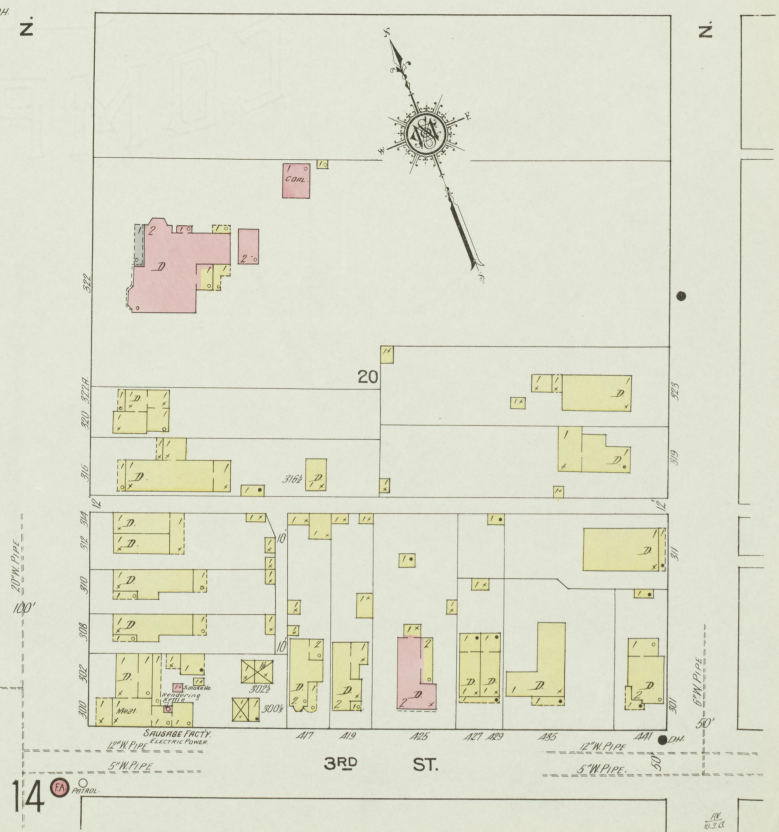
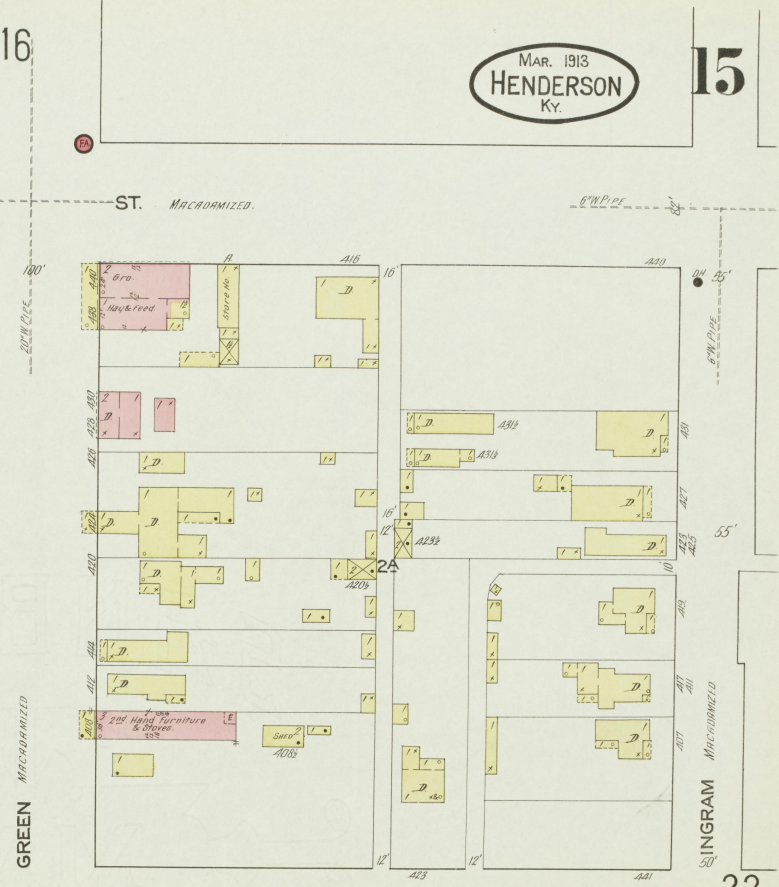
MICRODAMIZED

15



Scale of Feet.





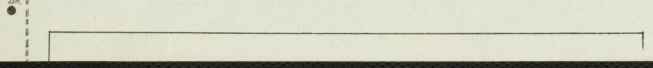
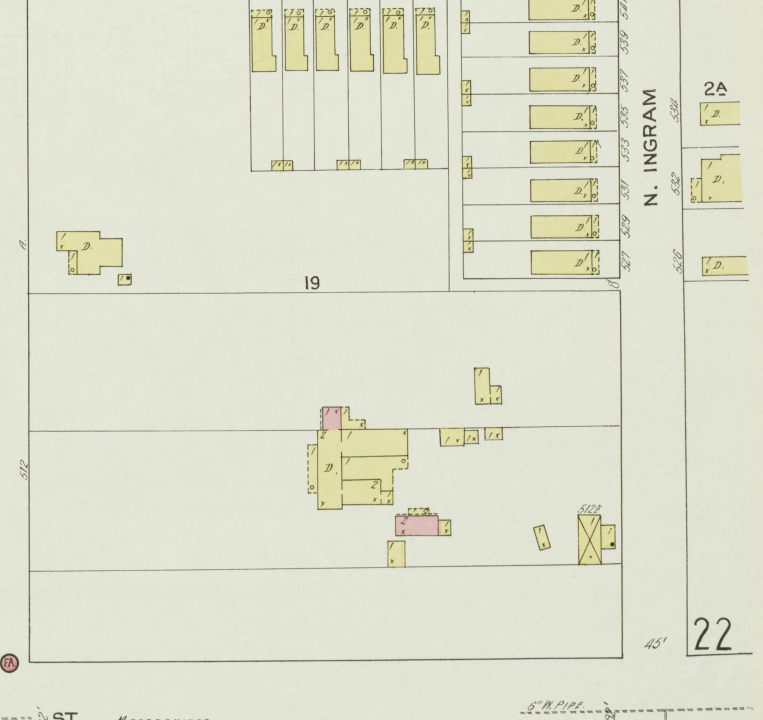
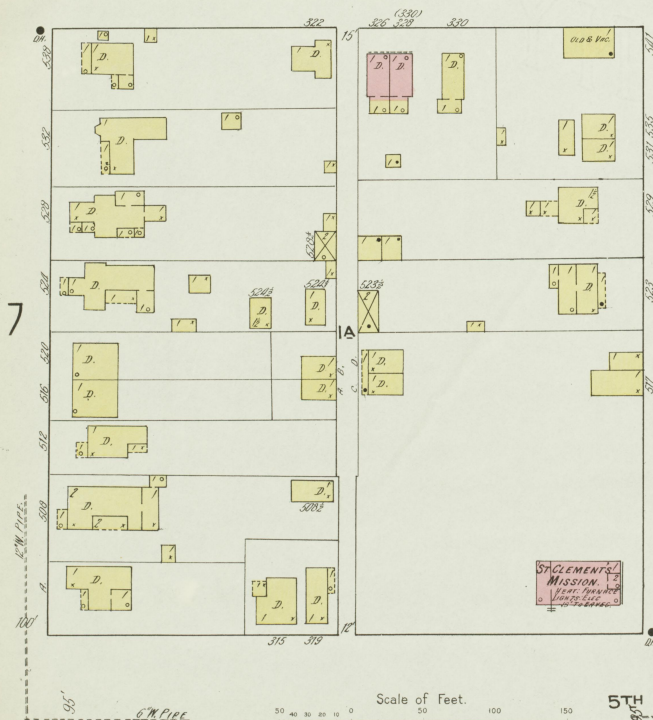
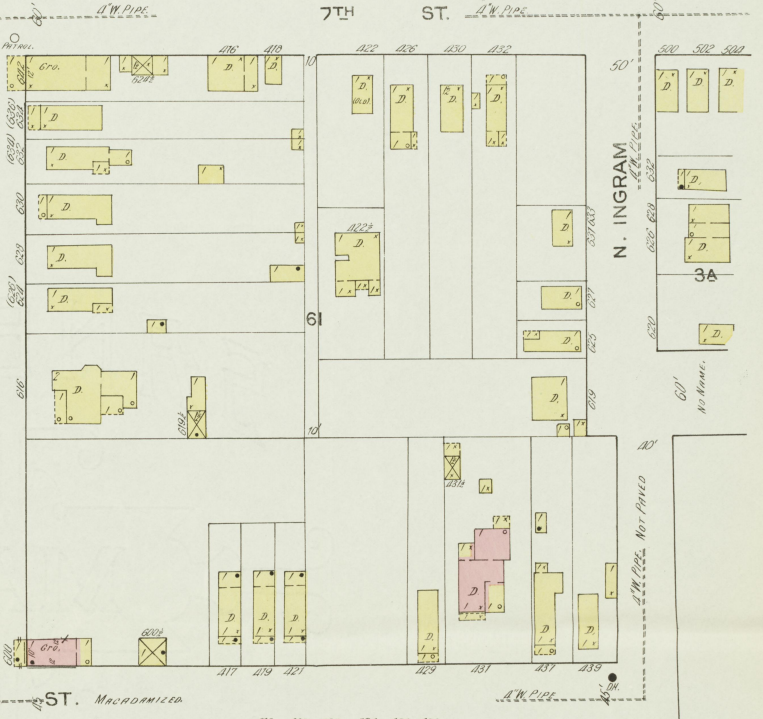
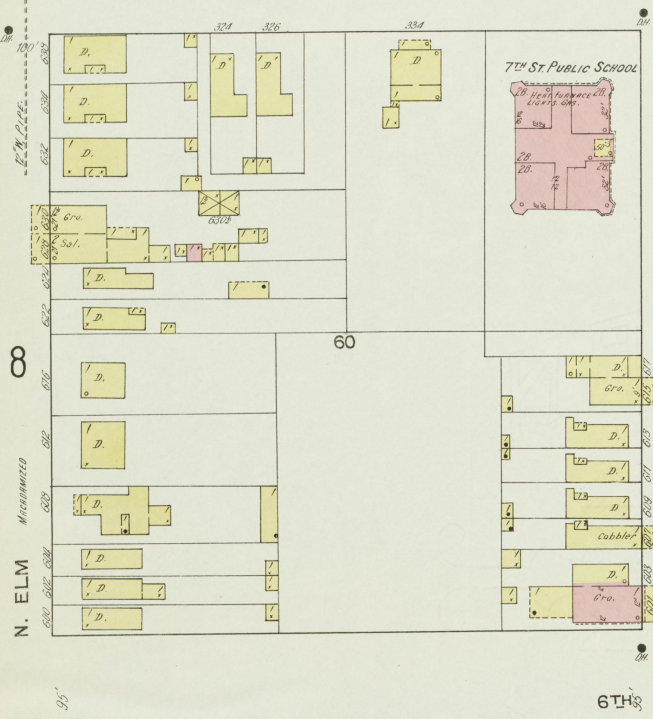
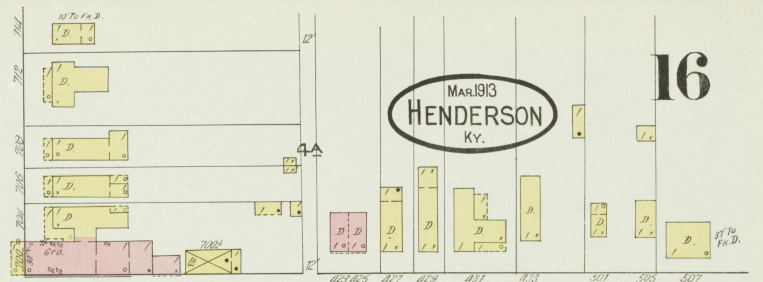
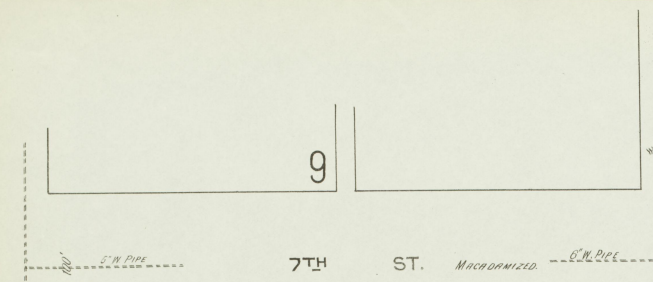
7

22

6

14

MAR 1913
HENDERSON
Ky.



Scale of Feet.
0 50 100 150

N. ELM Macadamized

N. GREEN Macadamized

N. INGRAM Macadamized

N. INGRAM Macadamized

15

22

S. ALVES St

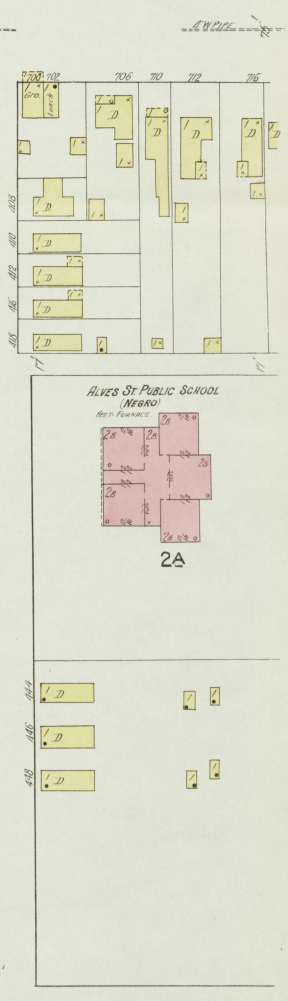
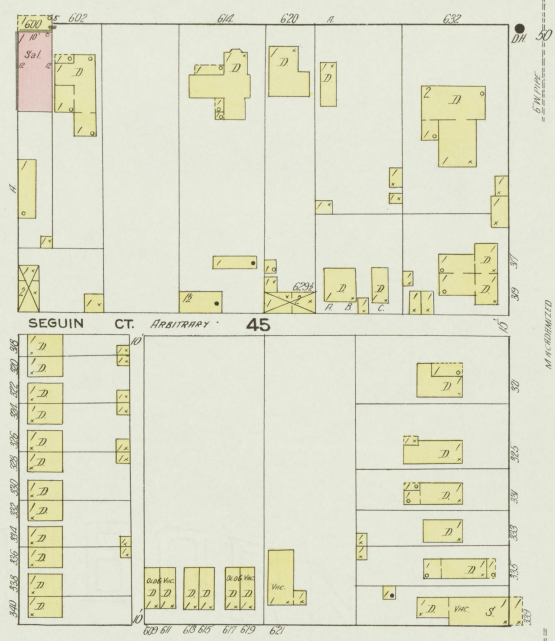
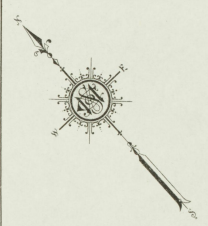
19

CLAY

18

MAR. 1913
HENDERSON
Ky.

23



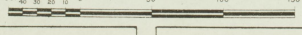
ALVES St PUBLIC SCHOOL
(NEAR)

2A

VINE

17

Scale of Feet.
0 50 100 150



20

19

WASHINGTON

Macadamized

E.W.P.C.E.

MAR. 1913.
HENDERSON
KY.

BARRET MANUAL TRAINING
HIGH SCHOOL
HEAT - STORM - LIGHTS - ELEC.

24



12

POWELL

S. INGRAM

S. ADAMS

S. ALVES

23

CLAY

Scale of Feet.

18

S. Alves Str.



21

20

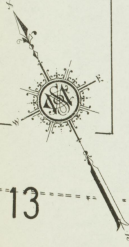
MAR. 1913
HENDERSON
KY.

1ST ST. MACDARMID

N. INGRAM

N. ADAMS

N. ALVES



13

MACDARMID

CENTER

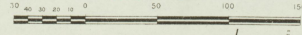


24

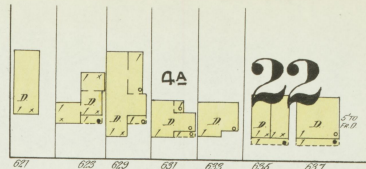
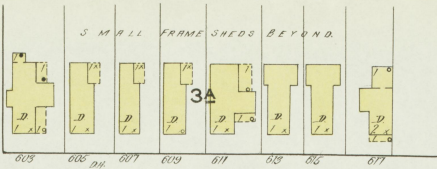
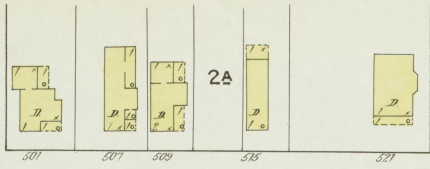
WASHINGTON

19

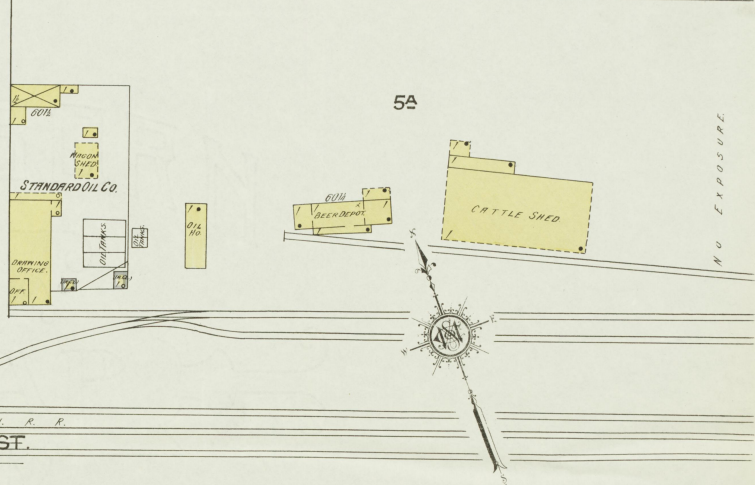
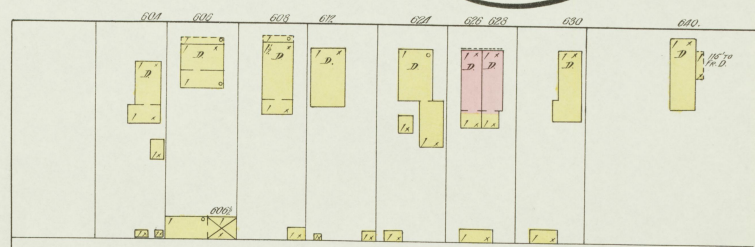
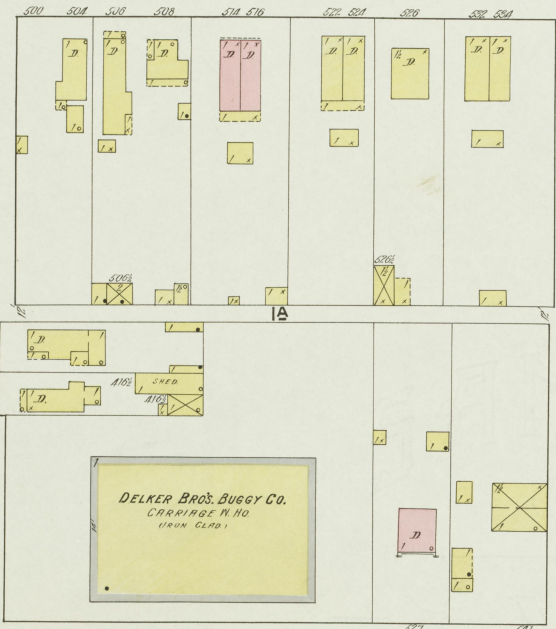
Scale of Feet.



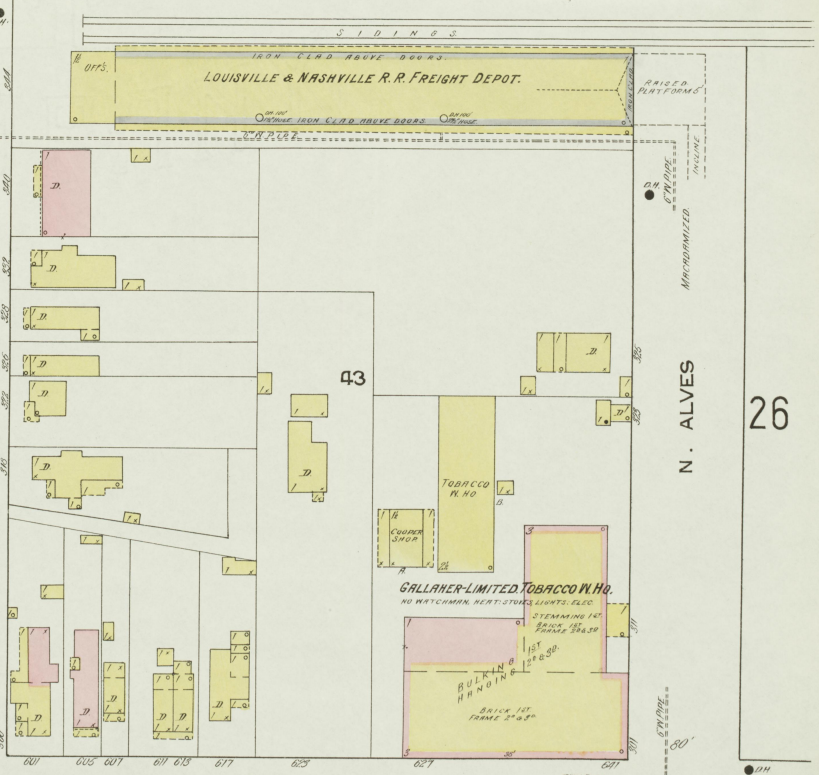
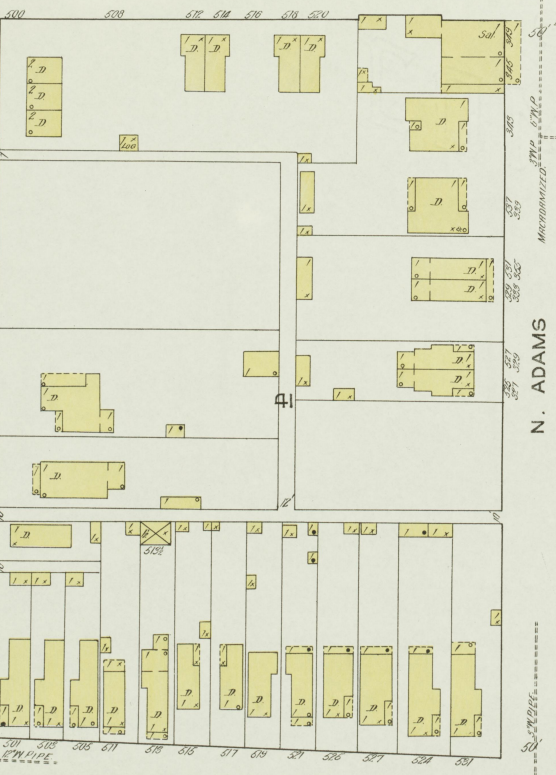
16



MAR. 1913
HENDERSON
 Ky.

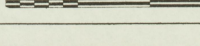


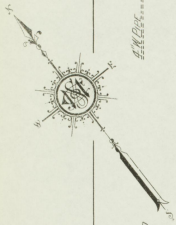
15



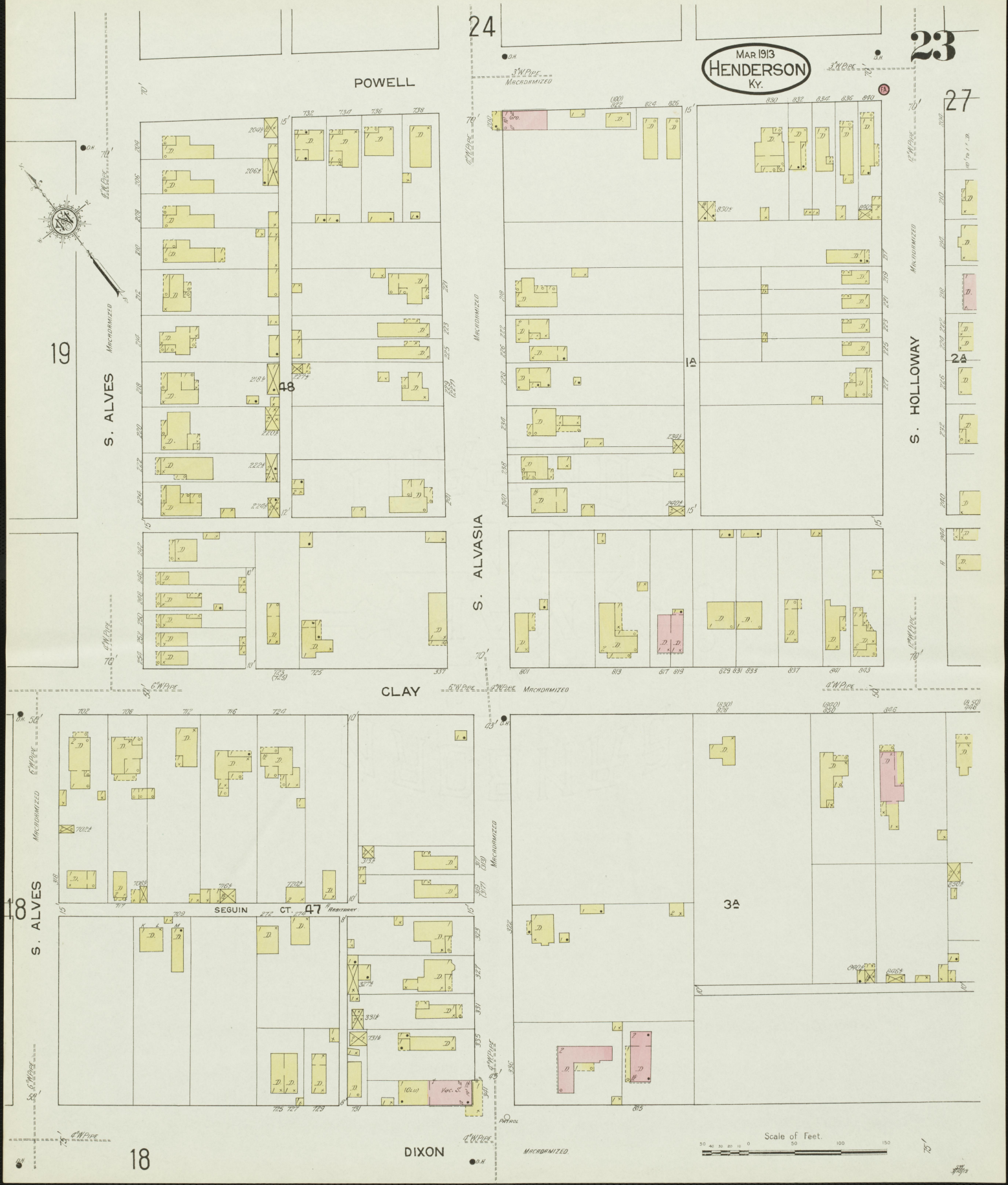
3RD ST.
 21

Scale of Feet.





Mar 1913
HENDERSON
Ky.



S. ALVES

POWELL

S. ALVASIA

CLAY

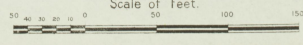
S. ALVES

SEGUIN

DIXON

S. HOLLOWAY

Scale of Feet.



N. ALVES ST

25

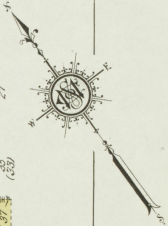
N. ALVASIA ST

24

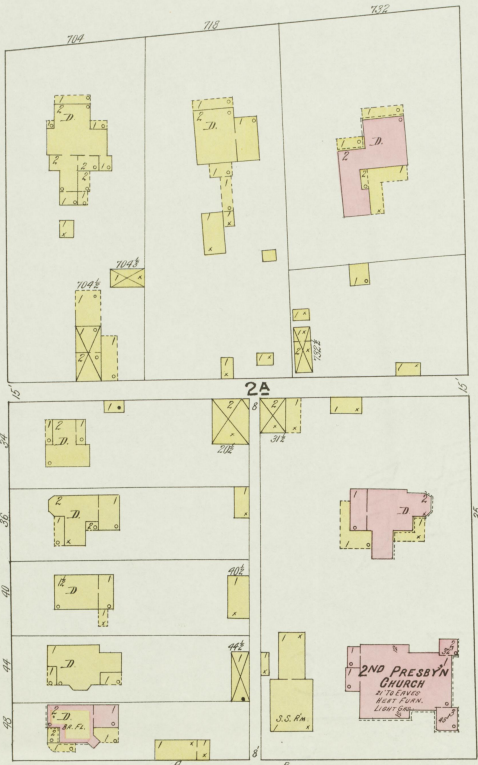
CENTER

MACRODRIMIZED

MAR. 1913
HENDERSON
Ky.



20



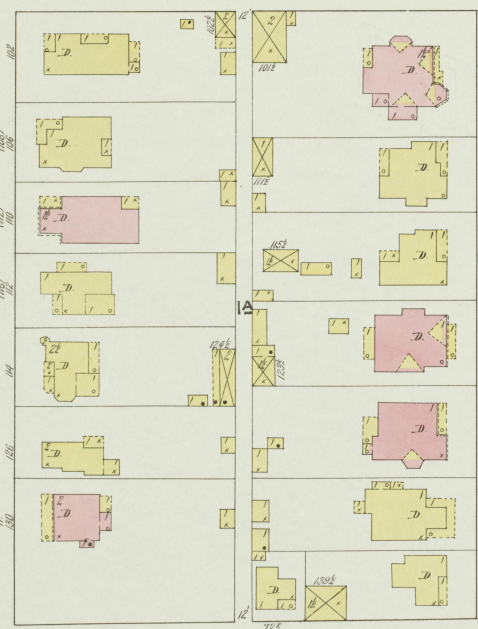
27

WASHINGTON

MACRODRIMIZED

S. ALVES

19



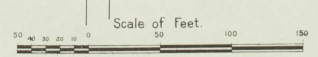
S. ALVASIA



S. HOLLOWAY

23

POWELL NOT PAVED

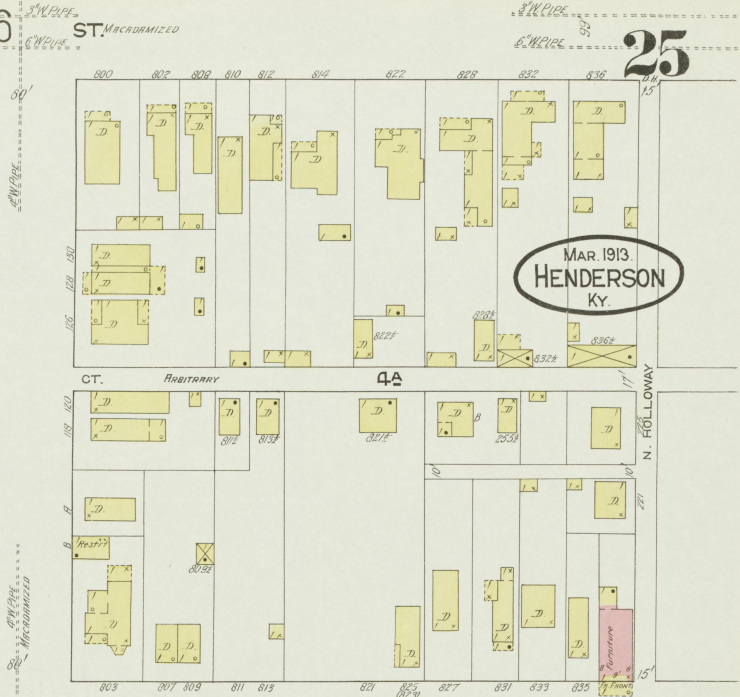




21

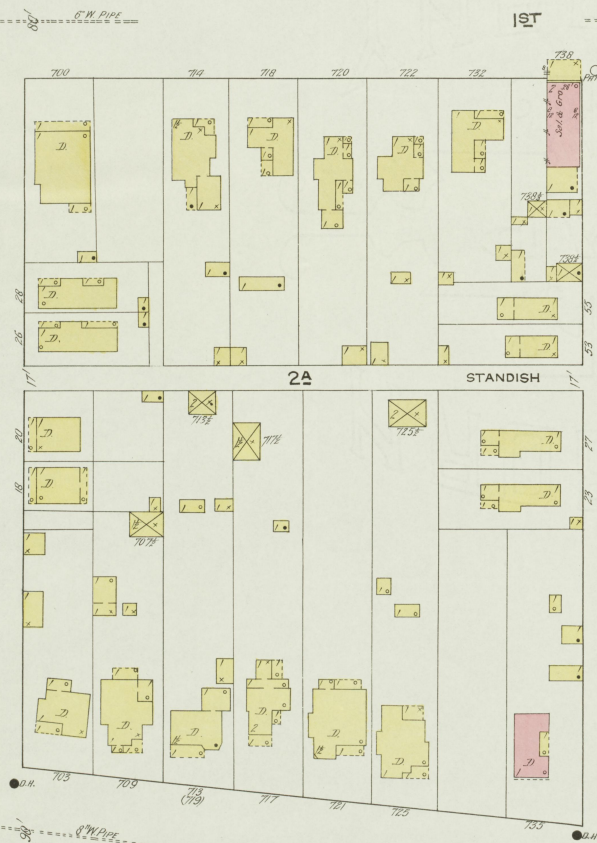


26



25

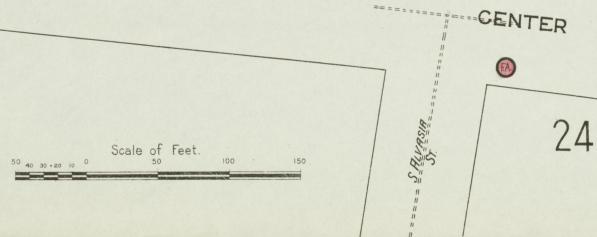
20



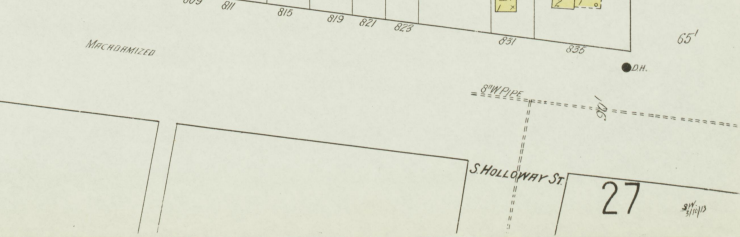
19



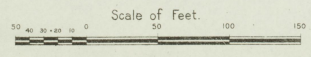
28



24



27



MAR 1913 HENDERSON Ky.

CENTER

S ALVES ST

S ALVES ST

S HOLLOWAY ST

N. ALVES

N. ALVASIA

N. HOLLOWAY

N. HOLLOWAY

N. HOLLOWAY

S HOLLOWAY ST

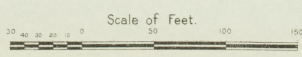
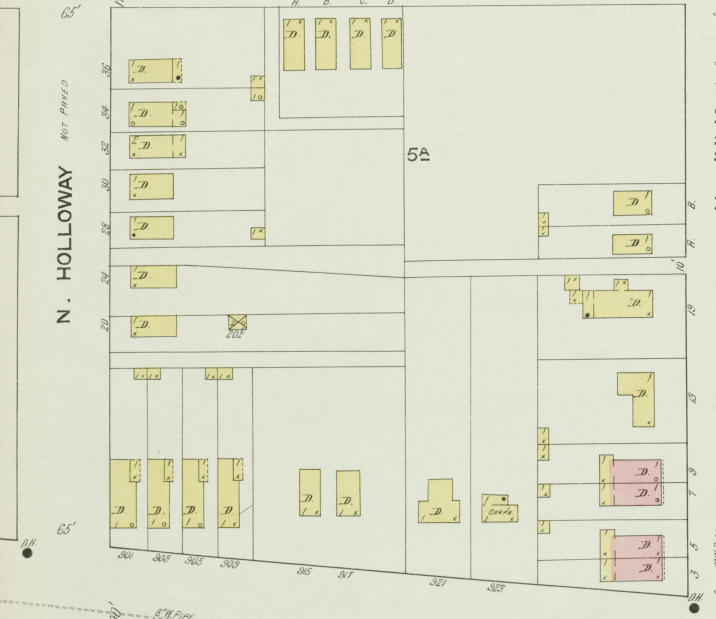
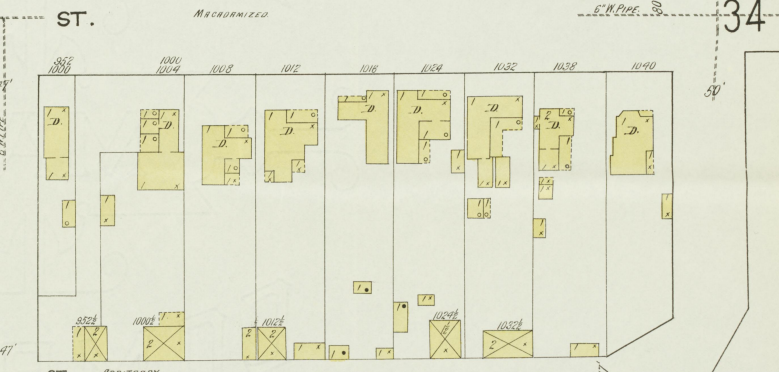
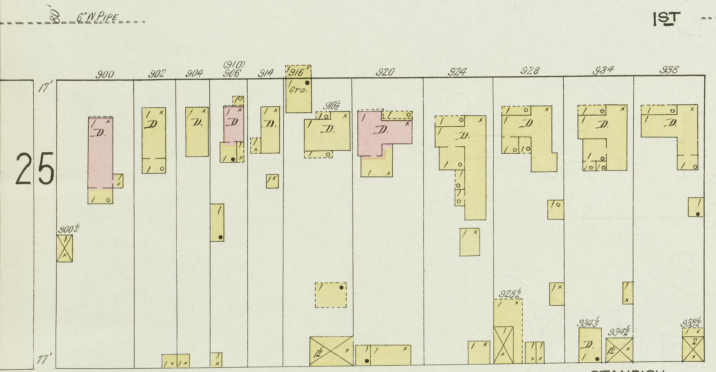
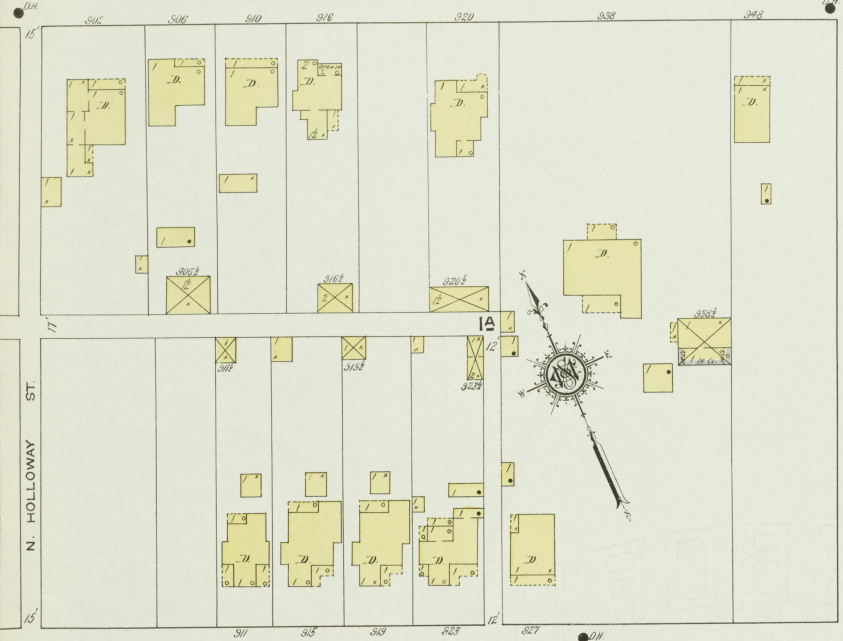
26

2ND ST.

29

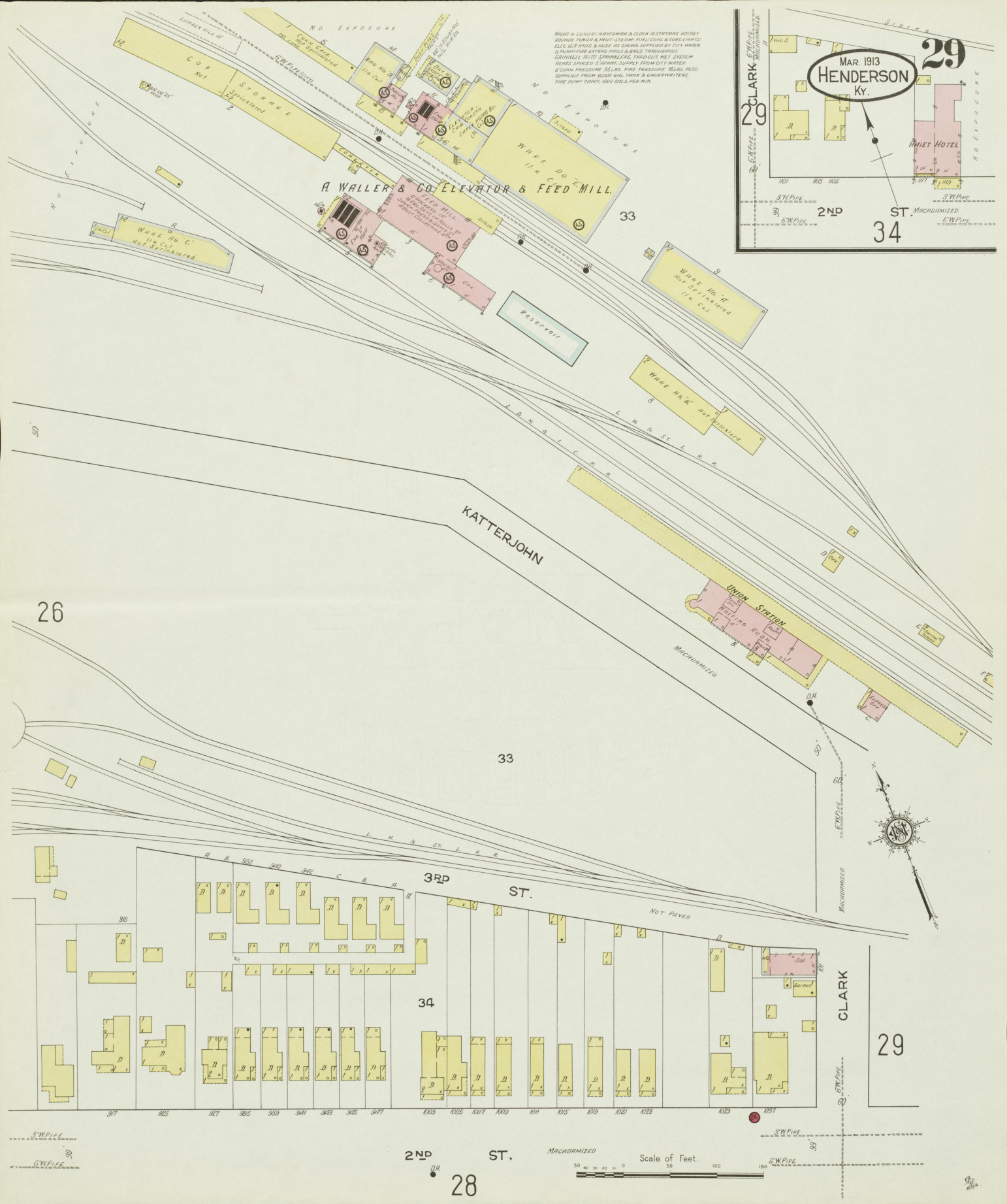
28

MAR 1913
HENDERSON
KY.

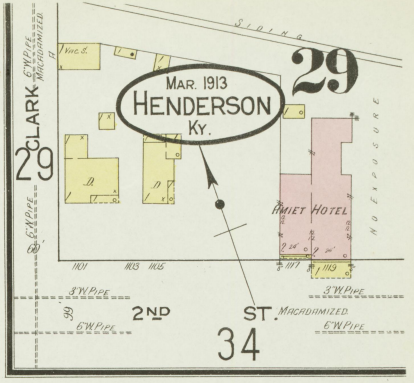


CENTER

27



NIGHT & SUNDAY WATCHMEN & CLOCK (ESTIMATED HOURLY ROUNDS POWER & HEAT STEAM FUEL OIL & CIGAR LIGHTS) ELECTRIC POWER & HEAT (AS SUPPLIED BY CITY WATER) PLUMBING FIRE EXTRAS PAULS & BRES THROUGHOUT GRINDING INTO SCRAP METALS THROUGH NET SYSTEM WHEELS SHAVED & WIPERS SUPPLY FROM CITY WATER 5" DOWN PRESSURE 25 LB. FIRE PRESSURE 25 LB. ALSO SUPPLIED FROM 3000 GAL. TANK & CONDENSER WATER. FIRE PUMP CAPAC. 1000 GALS. PER MIN.



MAR. 1913
HENDERSON
KY.

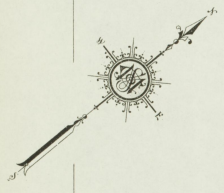
30

27

7A

MEADOW

70



1A

HELM

NOT PAVED

2A

POWELL

112

WASHINGTON

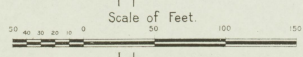
MACADAMIZED

MILL

(COTTON MILL AV.)
MACADAMIZED.

C.M. P.L.P.E.

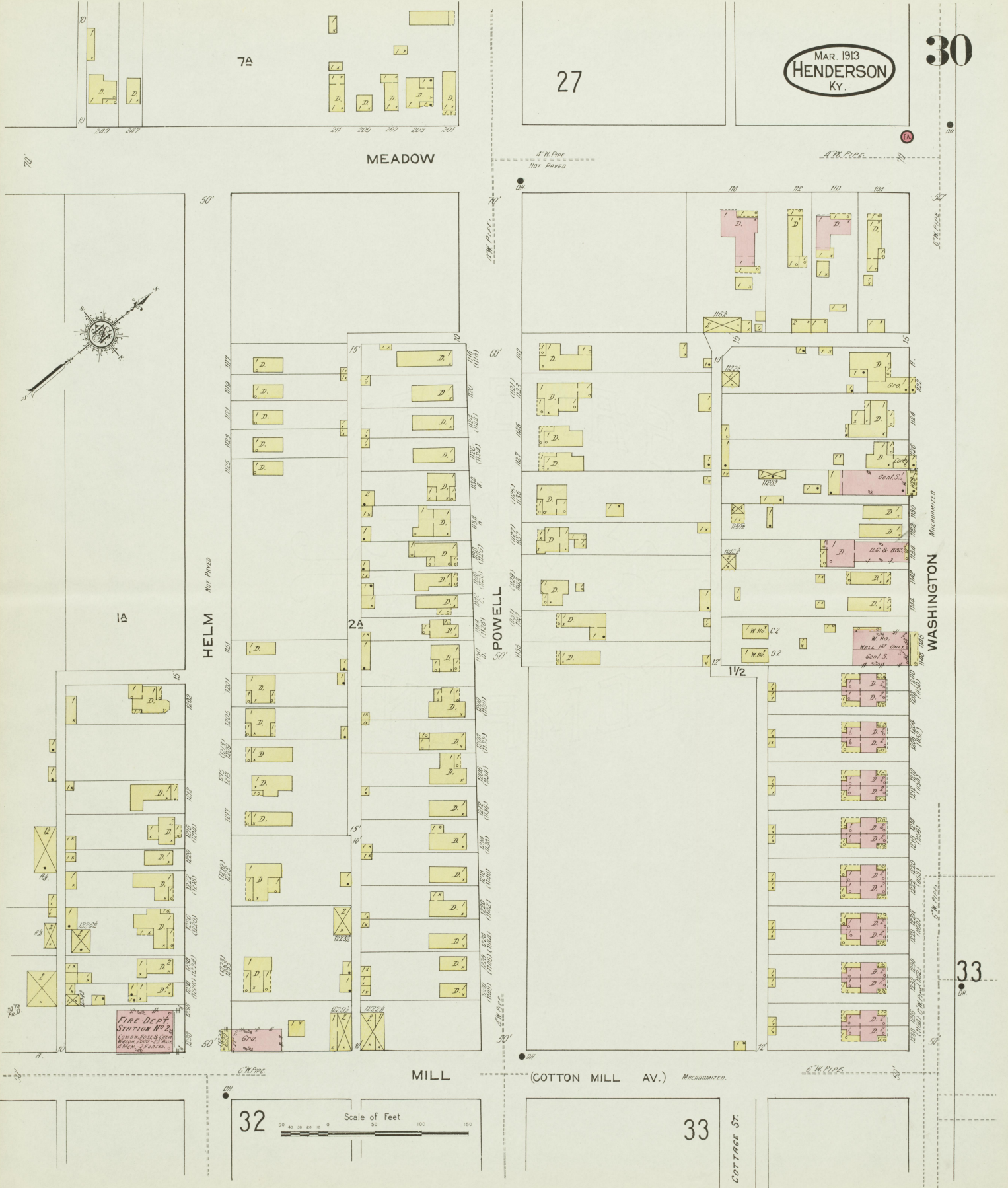
32



33

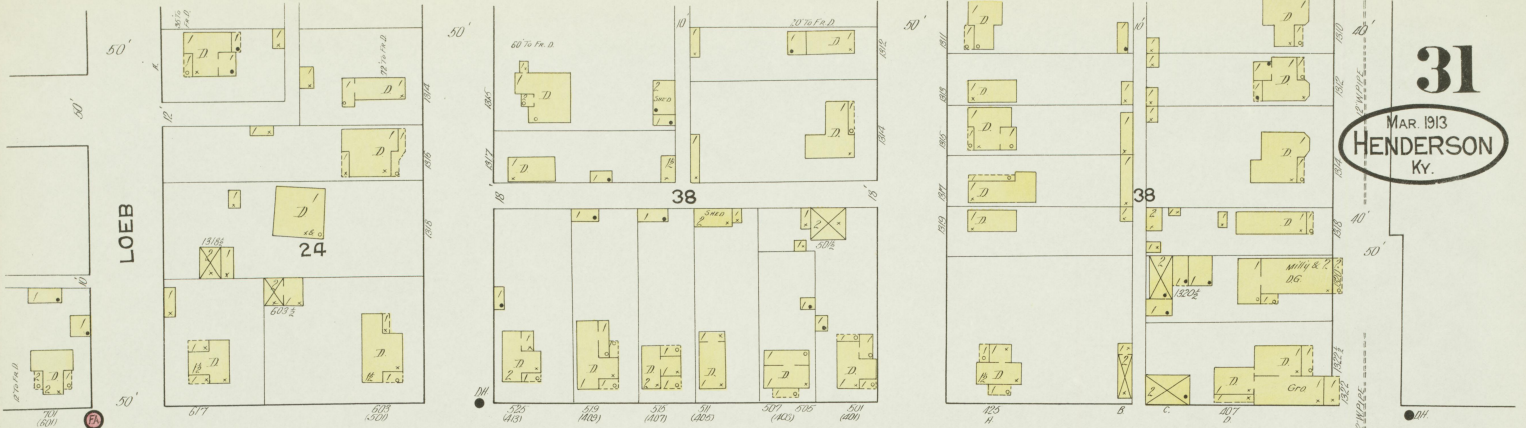
COTTAGE ST.

33



31

MAR 1913
HENDERSON
Ky.



LETCHER NOT PAVED



SHELBY NOT PAVED



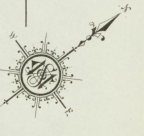
ATKINSON MACRODRIZED

Scale of Feet.

35

36

32



30

32

MAR. 1913.
HENDERSON
KY.

MILL (COTTON MILL AV.) Macadamized

33 Cottage St.

LETCHER Macadamized

CLAY

HELM

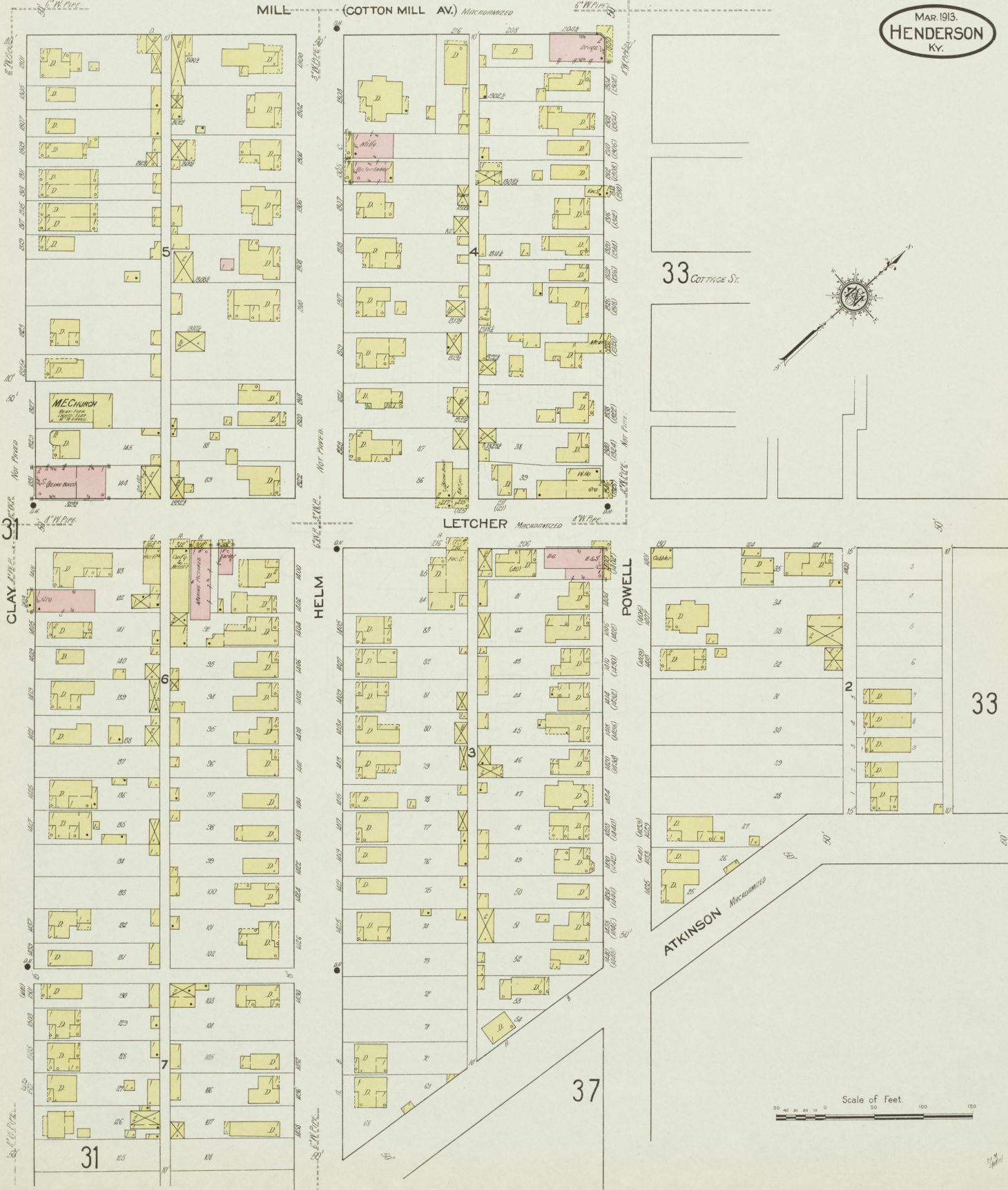
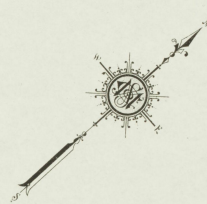
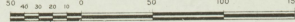
POWELL

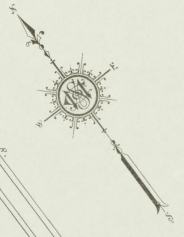
33

37

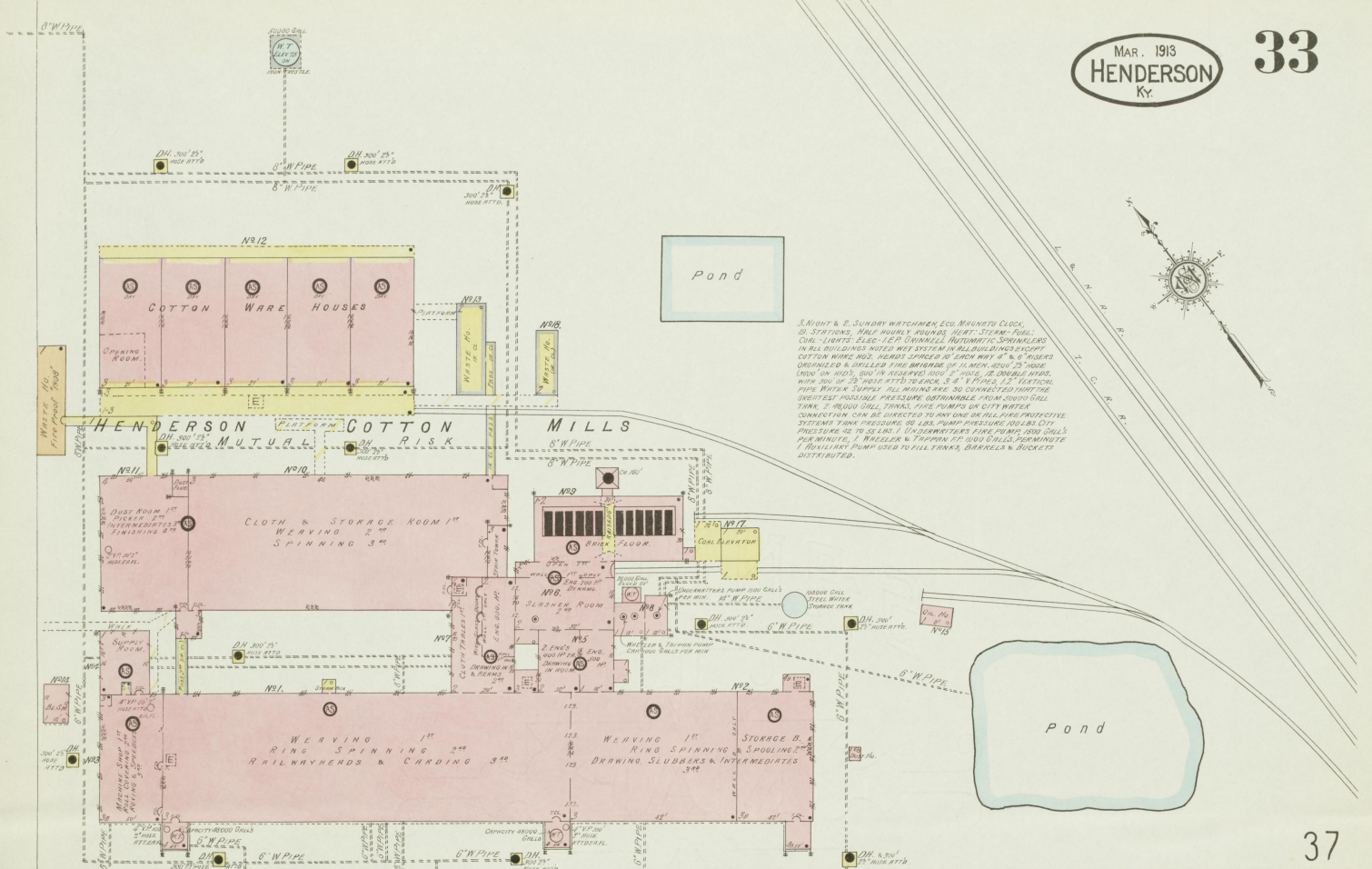
ATKINSON Macadamized

Scale of Feet





3 NIGHT & 2 JURY WATCHMEN, ECU. BALNETO CLOS.
2 STATIONS, WALL HOOKS, HOOKS, HOSE, STEAM, FALL,
CIVIL - LIGHTS, ELEC. - I.P. CANNON, AUTOMATIC SPRINKLERS
WALL HOOKS, HOSE, HOSE, HOSE, HOSE, HOSE, HOSE,
COTTON WARE HOUSES, HEADS SPACED @ EACH WAY 4' x 6' HOUSES
ORIGINATED & BILLED FIRE DAMAGE OF \$1,000,000.00 HOSE
LOAD ON WDS, 600 IN ASSEMBLY AND 1" HOSE, 2 DOUBLE WDS,
WITH 200' OF 2" HOSE ATTACHED, 2 4" V. HOSE, 2 1/2 V. HOSE,
PIPE, WATER SUPPLY, ALL MAINS ARE SO CONNECTED THAT
GREATEST POSSIBLE PRESSURE OBTAINABLE FROM COTTON GILL
TANKS, 2 REBO GILL TANKS, FIRE PUMPS OR COTTON WARE
CONNECTION CAN BE DIRECTED TO ANY ONE OR ALL FIRE PROTECTIVE
SYSTEMS TANK PRESSURE OR LESS, PUMP PRESSURE, GILLS CITY
PRESSURE 20 TO 25 LBS. 1 UNDERWATERS FIRE PUMP, 1500 GALLS,
FOR MINUTE 1 WAZELER & THOMPSON FIRE PUMP, 1500 GALLS, PERMINUTE
1 REVOLVING PUMP, 1500 GALLS, PERMINUTE, BARRIKEL & BUCKETS
DISTRIBUTED.



37



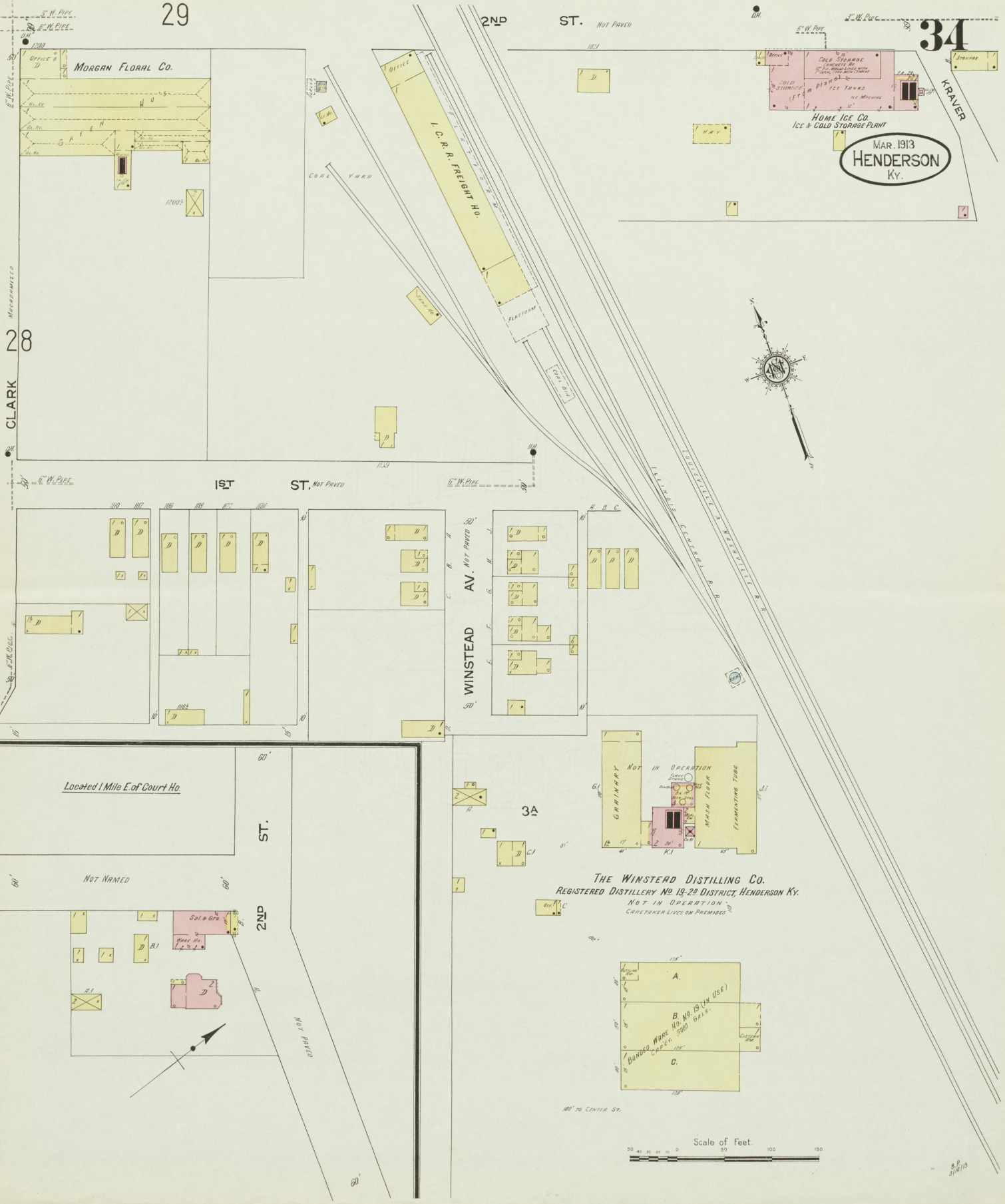
Scale of Feet.
0 50 100 150

32

32

29

34



MAR 1913
HENDERSON
Ky.

THE WINSTEAD DISTILLING CO.
REGISTERED DISTILLERY NO. 13-22 DISTRICT HENDERSON KY.
NOT IN OPERATION
CARETAKER LIVES ON PREMISES

Scale of Feet.

5.8.13

31

ATKINSON

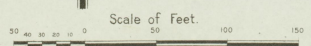
36
O'BYRNE

18

HENDERSON WAGON WORKS

MUTUAL RISK

NIGHT & SUNDAY WATCHMAN & CLOCK & STATIONS
HOURLY ROUNDS, POWER & HEAT, STEAM-FUEL
CONV.-LIGHTS, ELECTRICS - I.E. IS BEST AUTOMATIC
SPRINKLERS THROUGHOUT BUILDINGS AS SHOWN WITH
SYSTEM THROUGHOUT BLDG. & HOSE AS SHOWN, EXTENS. PIPES & BALS THROUGHOUT
& SUPPLIES, CITY WATER, 8" CONG. RE-ED PRESSURE
& 5000 GALL. SPRINKLER TANK-TANK SUPPLIED
FROM PRIVATE RESERVOIR BY UNDERWATER PUMP
SPRINKLY CO. GIVES FOR WINGTS



N O E X P O S U R E

35

MAR. 1913
HENDERSON
Ky.

Located 1/2 Miles S of Court Ho.



PEOPLES MINING Co's MINE

NIGHT ENGINEER, POWER, STEAM-FUEL
CONV.-LIGHTS, ELEC. - I.E. IS BEST AUTOMATIC
SPRINKLERS THROUGHOUT BLDG. & HOSE AS SHOWN, EXTENS. PIPES & BALS THROUGHOUT
& SUPPLIES, CITY WATER, 8" CONG. RE-ED PRESSURE
& 5000 GALL. SPRINKLER TANK-TANK SUPPLIED
FROM PRIVATE RESERVOIR BY UNDERWATER PUMP
SPRINKLY CO. GIVES FOR WINGTS

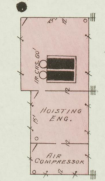
NOBLICK

Located 1/2 Mile S.E. of Court Ho.



KEYSTONE MINING & Mfg. Co's MINE

NOT IN OPERATION
NO WATCHMAN, CITY WATER.



N O E X P O S U R E

KRAVER

MAPLE

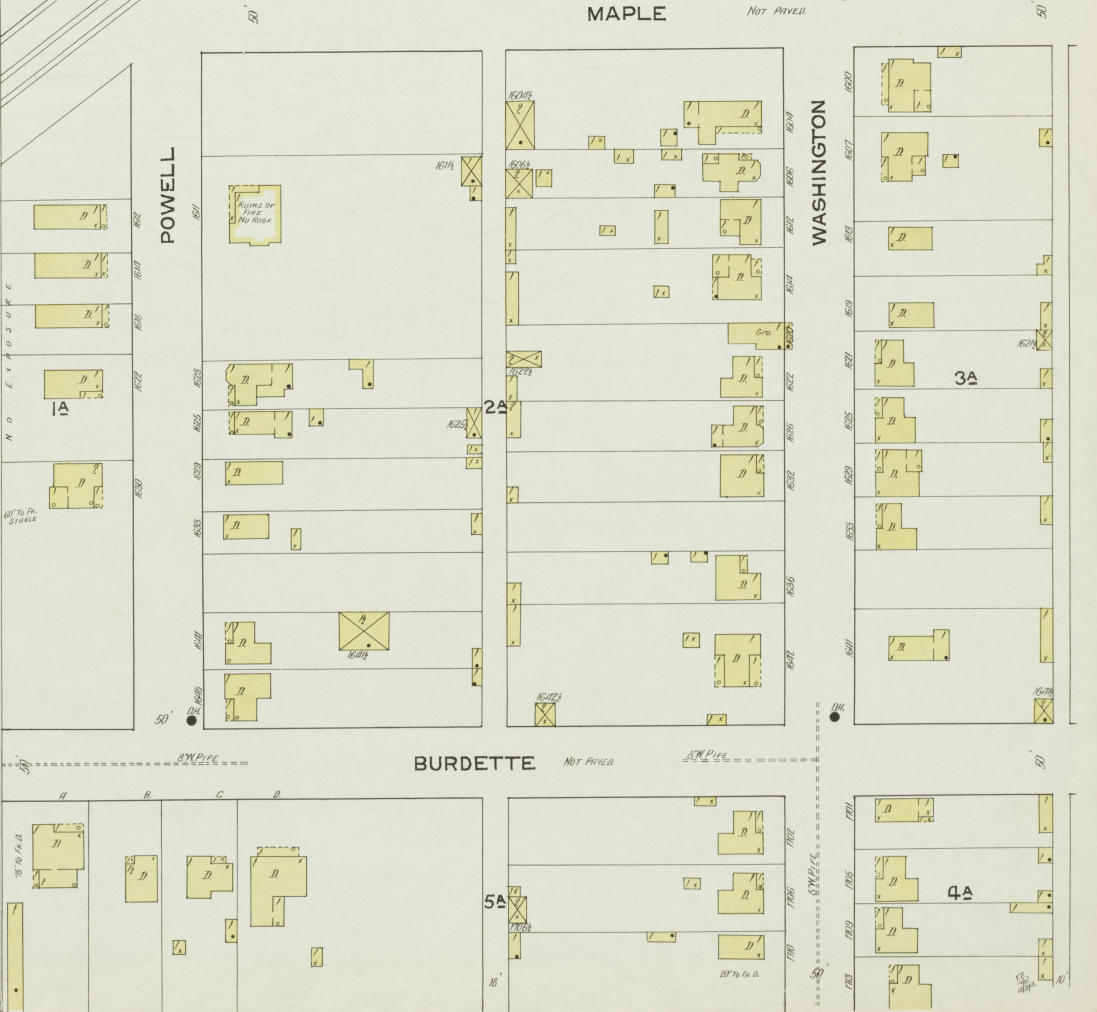
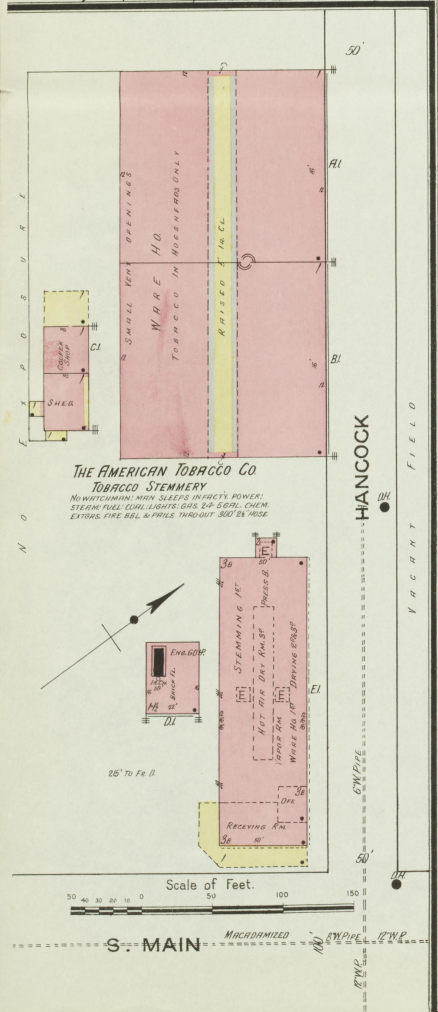
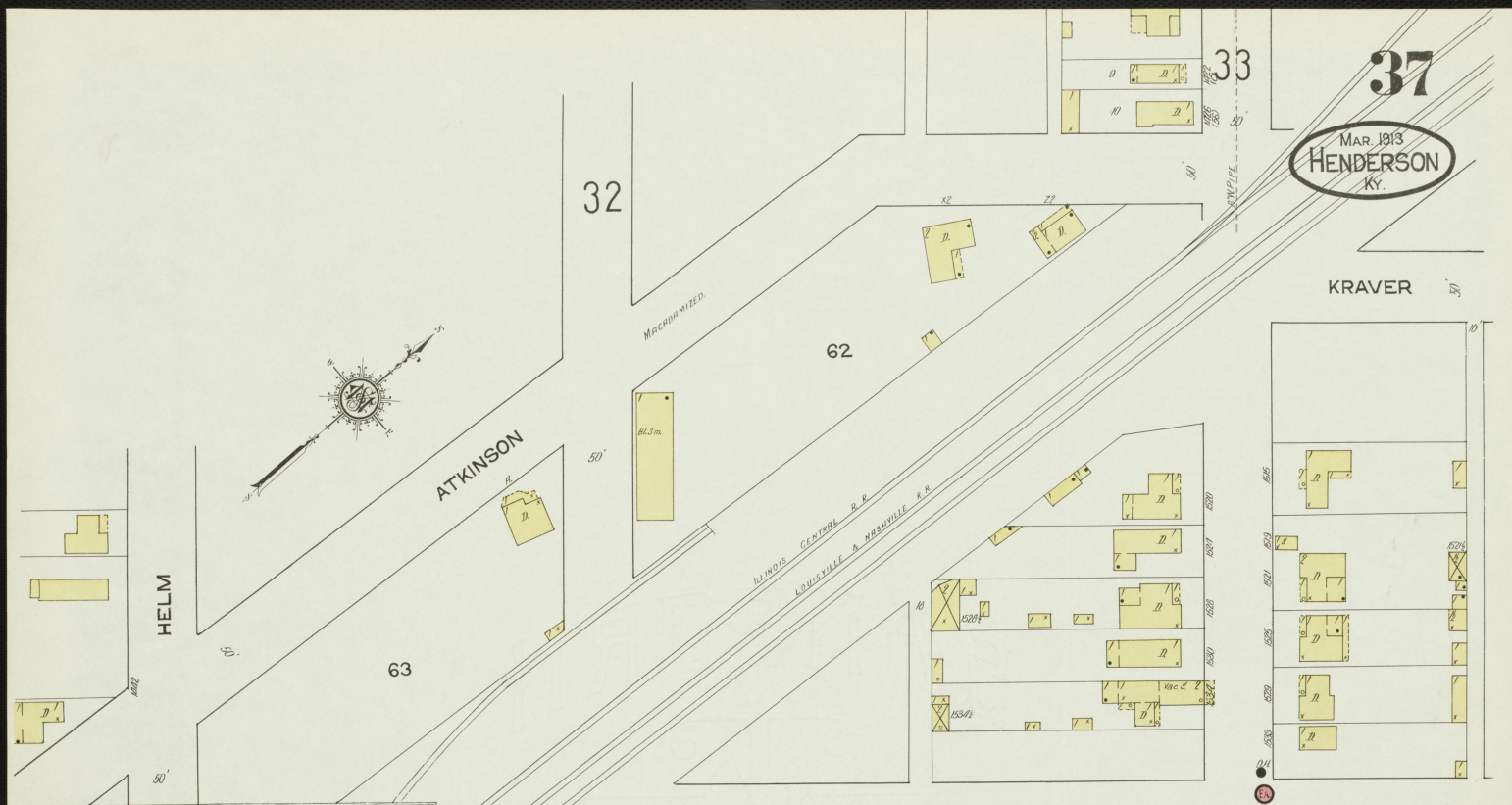
NOT PRIED

WASHINGTON

BURDETTE

NOT PRIED

SM. PIPE



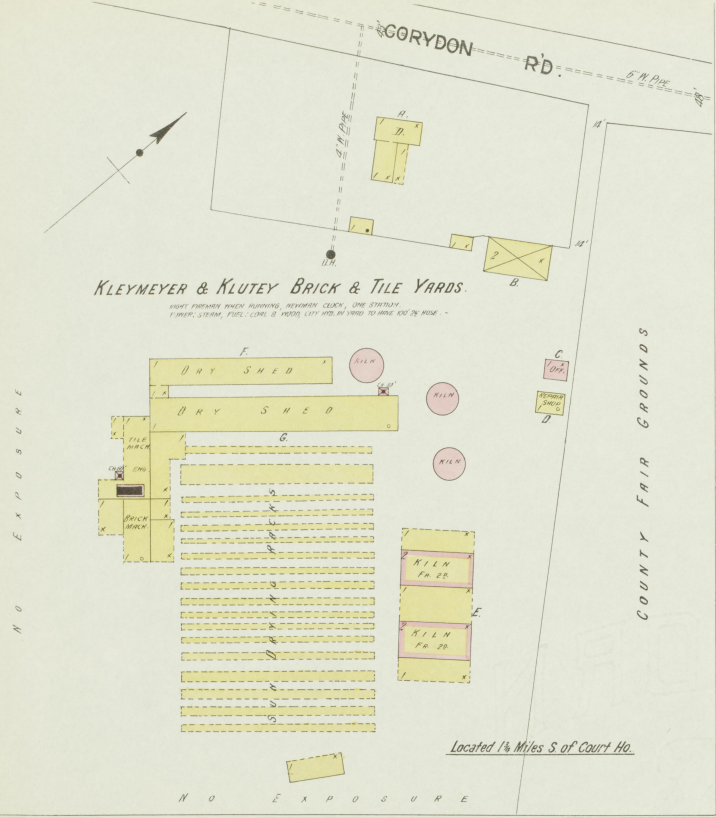
MAR 1913
HENDERSON
Ky.

KLEMEYER & KLUTEY BRICK & TILE YARDS

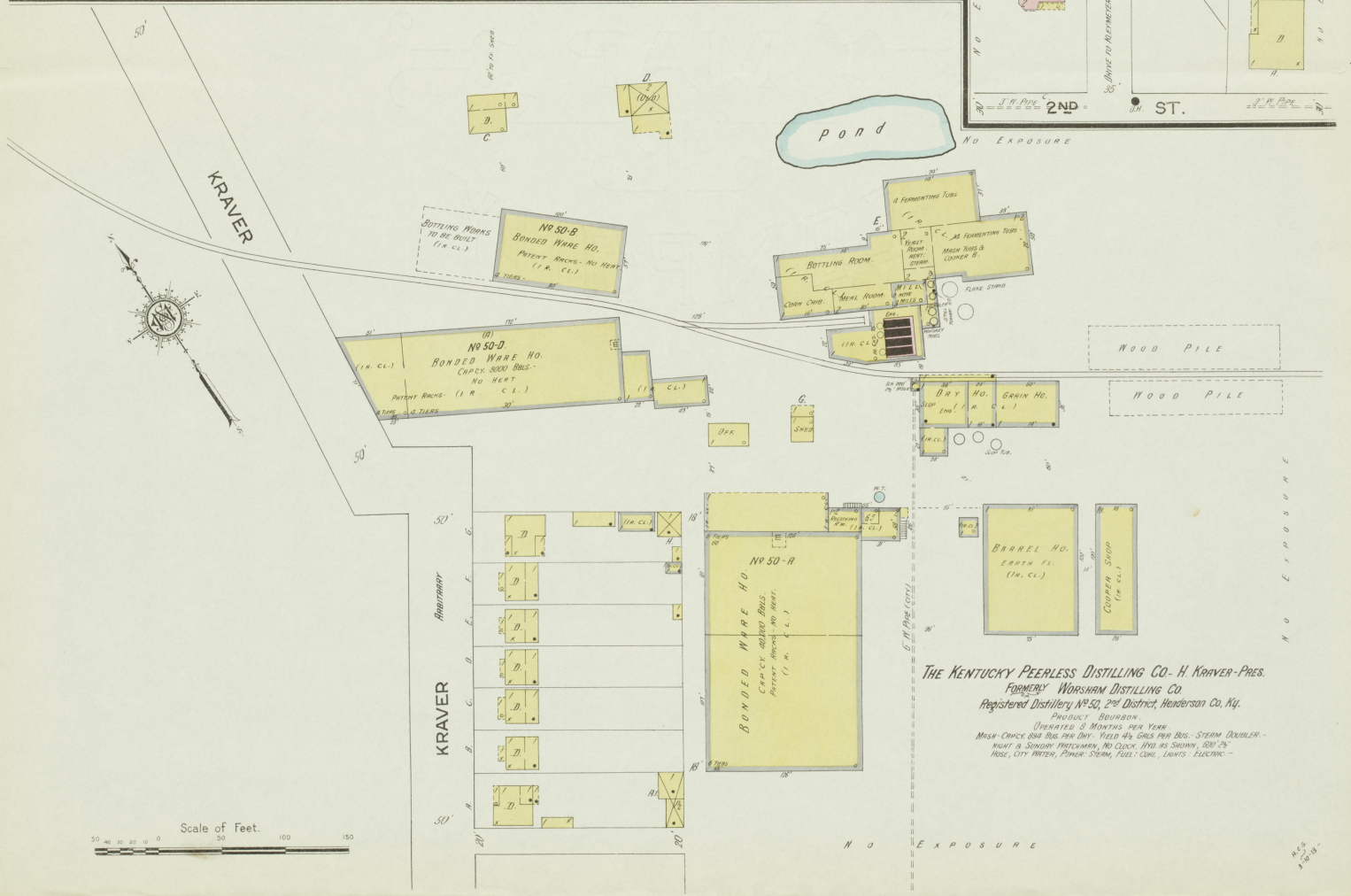
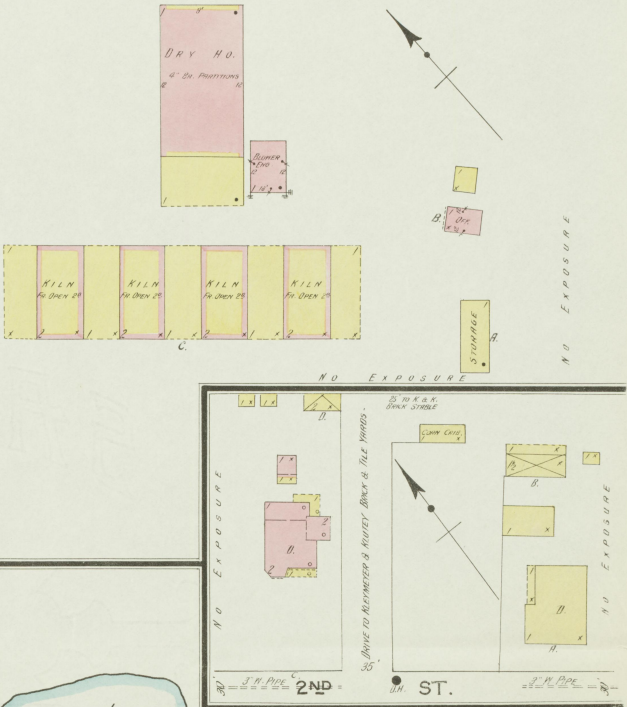
THIS BUILT BY THE KLEMEYER & KLUTEY ENGINEERS. THEY FOUNDING
HERE IN 1880 THROUGH THE YEARS. BUILT BY THE KLEMEYER & KLUTEY ENGINEERS.

KLEMEYER & KLUTEY BRICK & TILE YARDS.

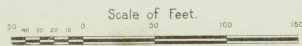
RIGHT PROPERTY WHEN BUILDING. REVISION CHECK. ONE STORY
F. BRICK YARD. F. BRICK YARD. F. BRICK YARD. F. BRICK YARD.



Located 1/4 Miles S. of Court Ho.



THE KENTUCKY PEERLESS DISTILLING CO. - H. KRAUER - PRES.
FORMERLY WORSHAM DISTILLING CO.
Registered Distillery No. 53, 2nd District, Henderson Co., Ky.
PRODUCT: BOURBON
OPERATED 3 MONTHS PER YEAR
MASH: CAPACITY 800 BUS. PER DAY. YIELD: 4 1/2 GALS. PER BUS. STEAM: DOUBLE-
HEAT & SINGLY. FUEL: COAL. NO. CASKS: 1750. RES. SLOWLY. 600' 2 1/2"
HOSE. CITY WATER. POWER: STEAM. FUEL: COAL. LIGHTS: ELECTRIC.



11-25
1913

MAR 1913
HENDERSON
KY

