

KENTUCKY STATE CHURCH
CONFERENCE

K.S.C. 1900
SOUVENIR
SPECIAL ISSUE
OF
The Kentuckian
JUNE 1900

EDITED BY
JAS. MOTT & DANIEL



University Archives

From Library
Johnston Papers
7-26-61

The Kentuckian,

A MONTHLY MAGAZINE,

Lexington, Ky.

Vol. 2.

JUNE, 1900.

No. 7.



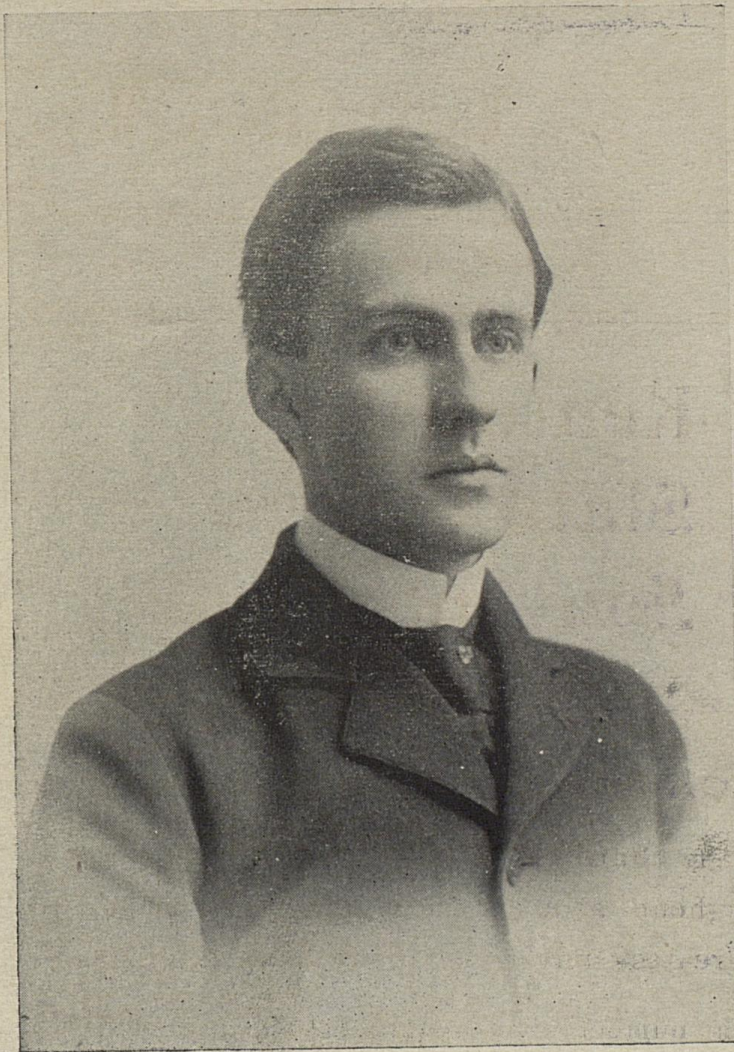
Kentucky State College Souvenir Issue

"THE CAMERA CAN'T LIE,"

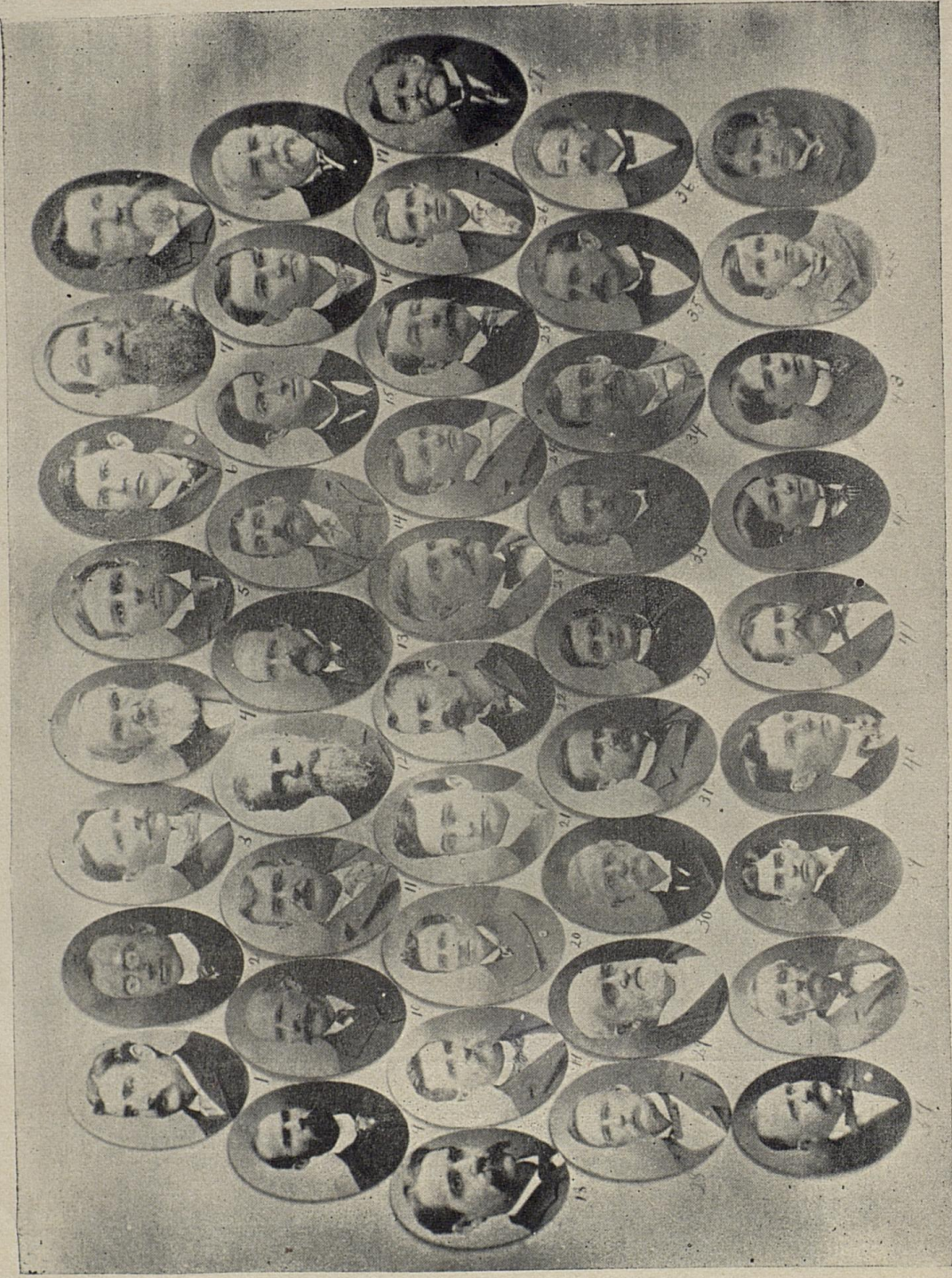
And the State College is literally photographed throughout—showing the institution to be one of the greatest universities in the South or West.

This number is dedicated to the student body and the members of the last General Assembly of Kentucky, who, in their appropriation to State College, have builded to their memory a monument eternal as the hills.

Entered at the Post Office at Lexington, Ky., as Second Class Matter.

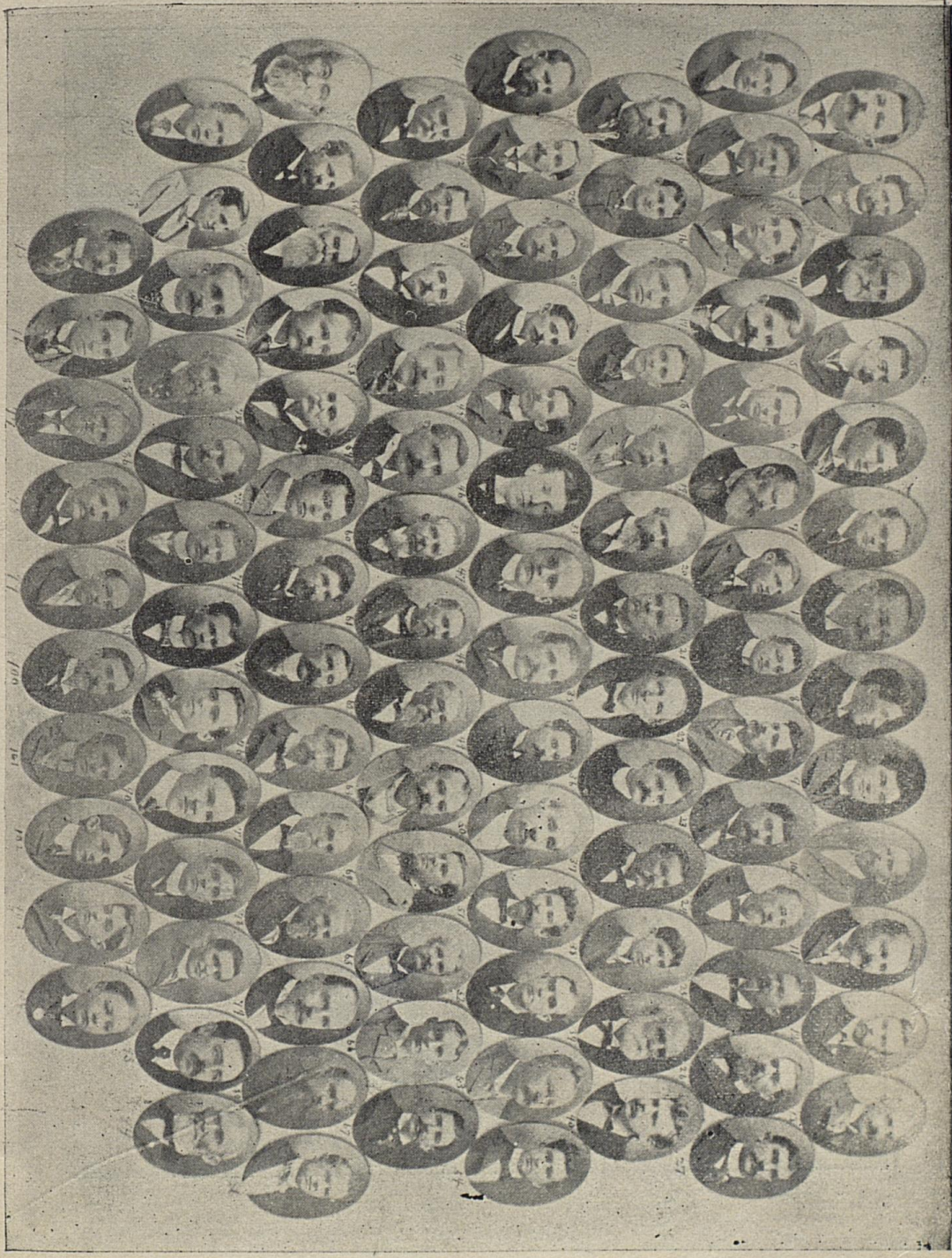


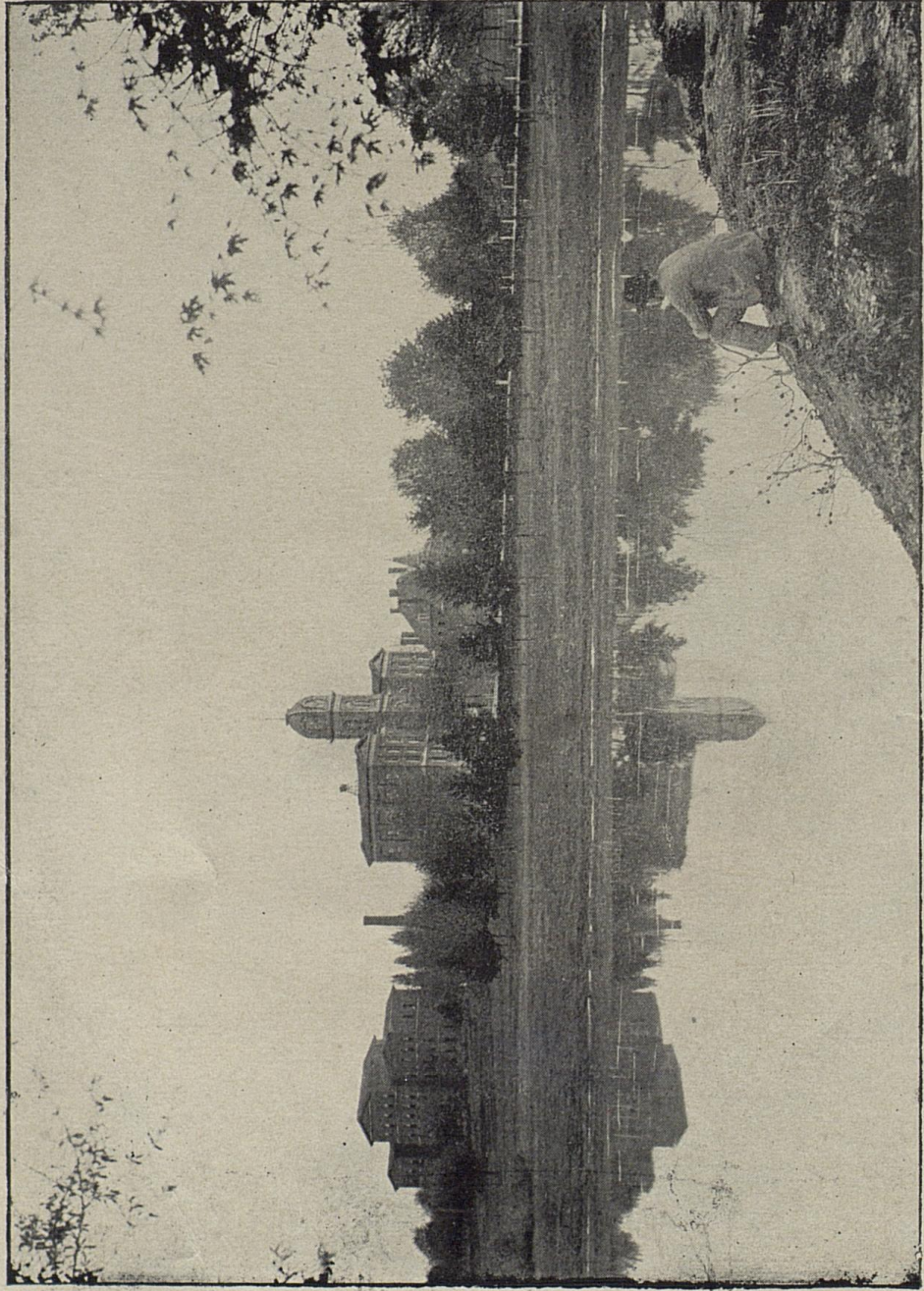
J. C. W. BECKHAM,
Governor of Kentucky. Chairman, ex-officio, of the Board of Trustees
of the Kentucky State College.



Kentucky House of Representatives. The State College bill passed the House by a three-fourths majority.

Kentucky House of Representatives. The State College bill passed the House by a three-fourths majority.



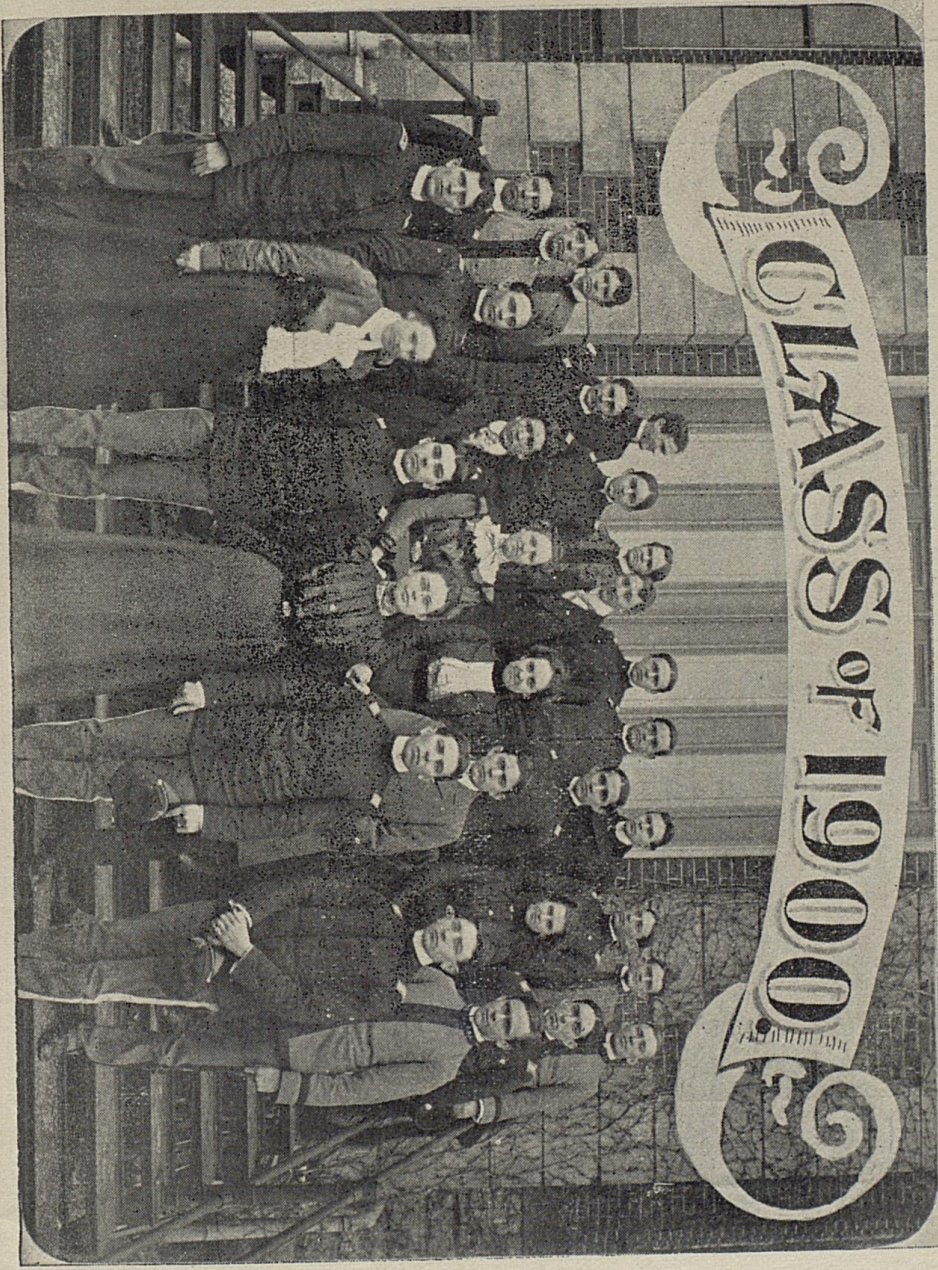


View of College Campus, giving broad view of the Lake



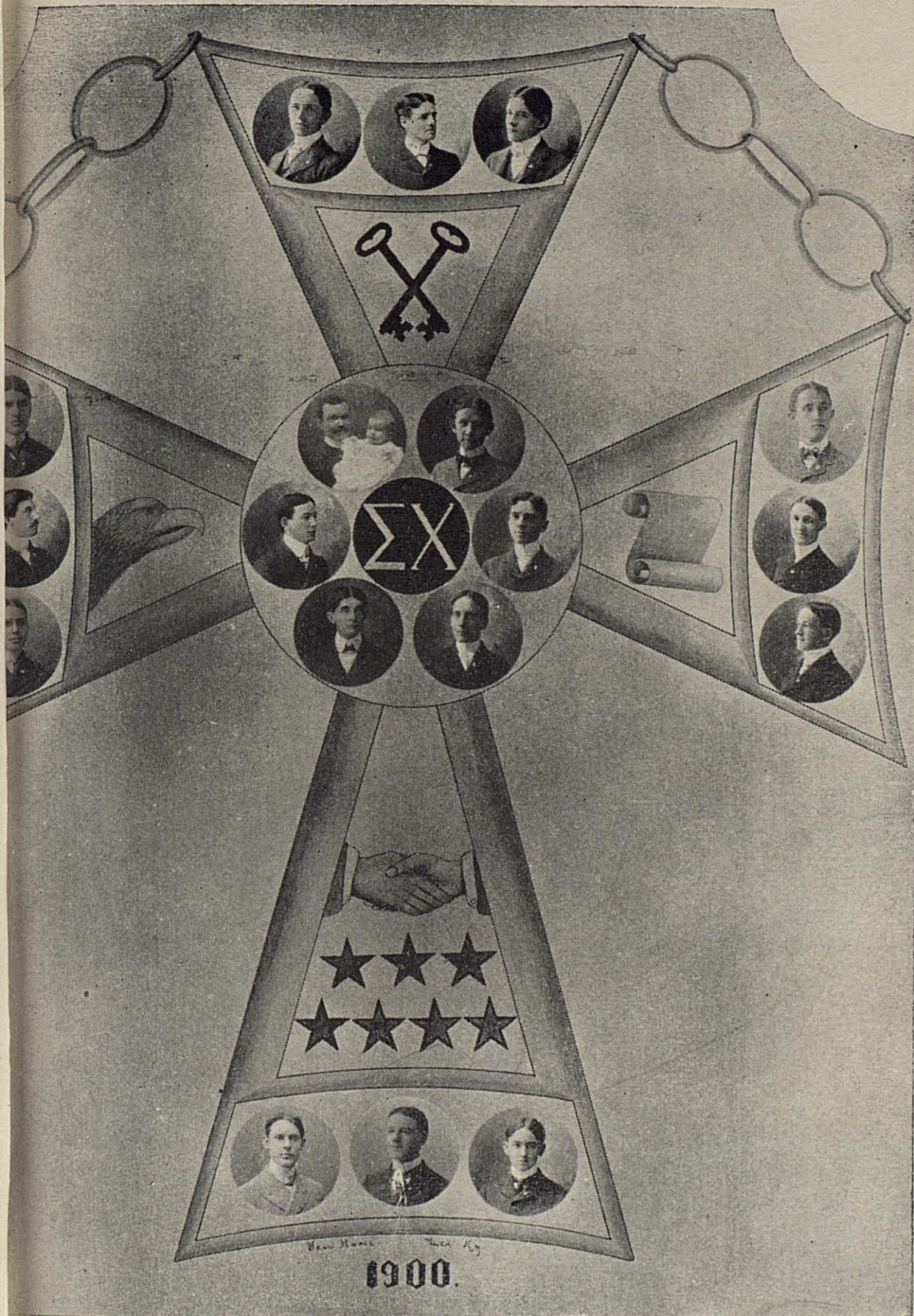
JAMES KENNEDY PATTERSON, Ph. D., LL. D., who for more than thirty years has been President of the Kentucky State College. President Patterson has served longer, with one exception, than any other college president in United States.







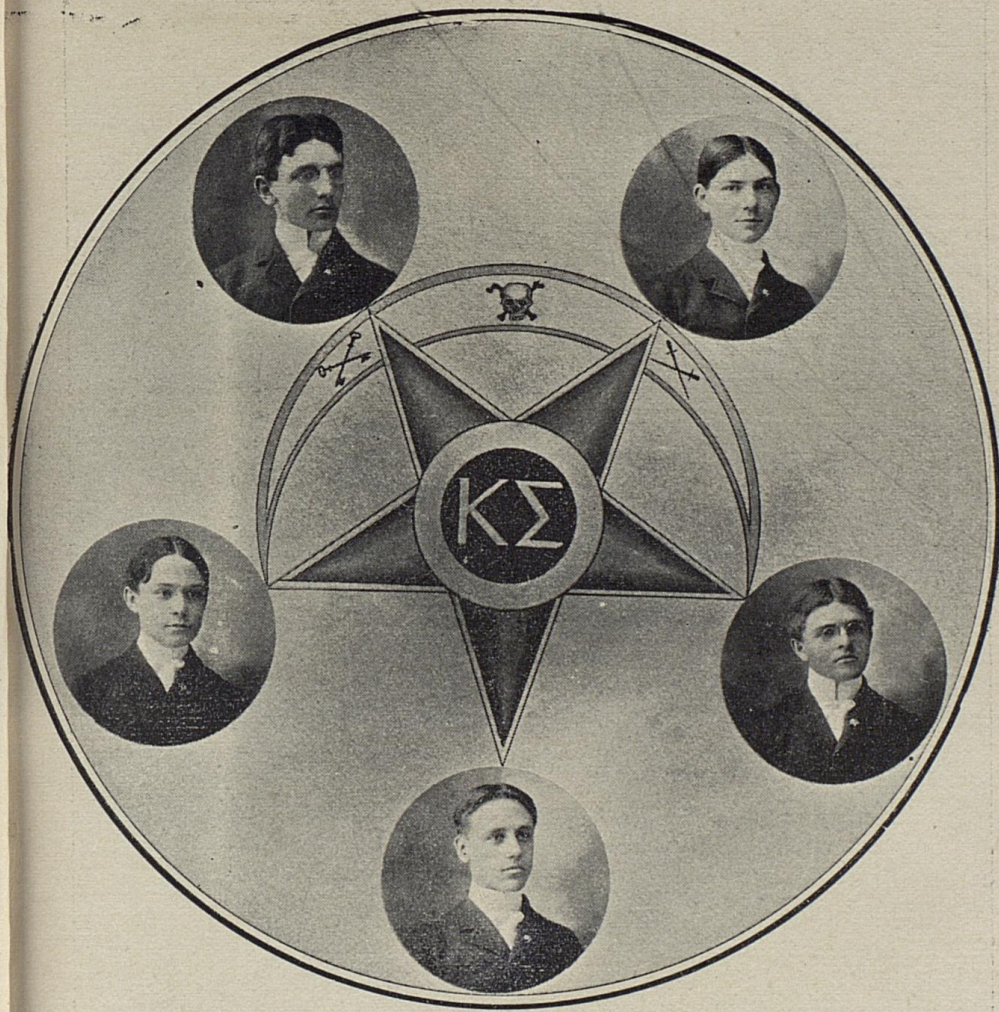
Kappa Alpha Fraternity.



Sigma Chi Fraternity.

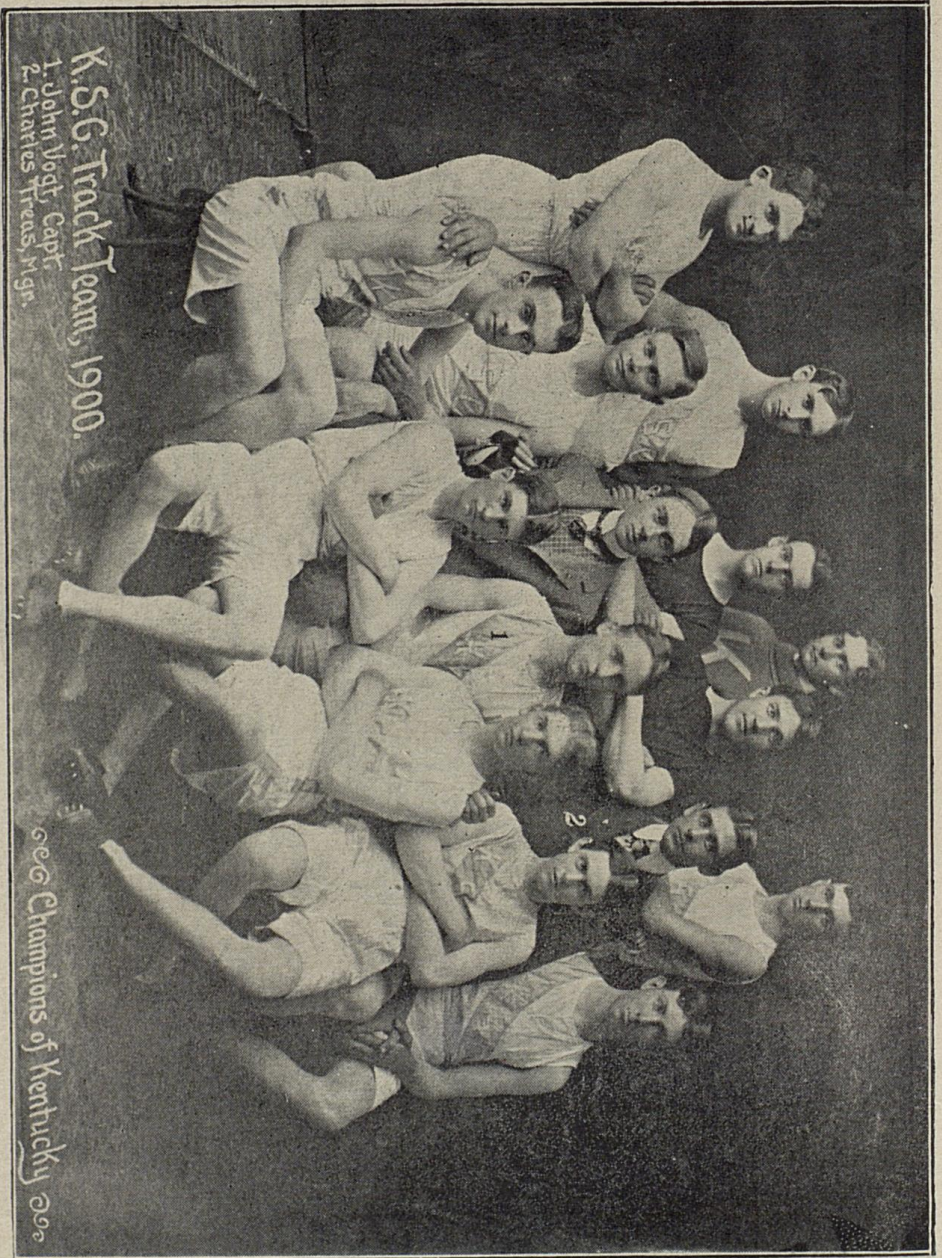


Photo



Kappa Sigma Fraternity. Installed May, 1900.

Photo and Design by VanHoose.



K.S.G. Track Team, 1900.
1. John Voigt, Capt.
2. Charles Treas, Mgr.

Champions of Kentucky



SMITH EDISON ALFORD, K. S. C., '96.

(The Track King of the South).

Champion of South in 100 yard's dash. Records: 100 yards 9 4-5 seconds.
220 yards 22 second's, flat. 440 yards 50 seconds flat.

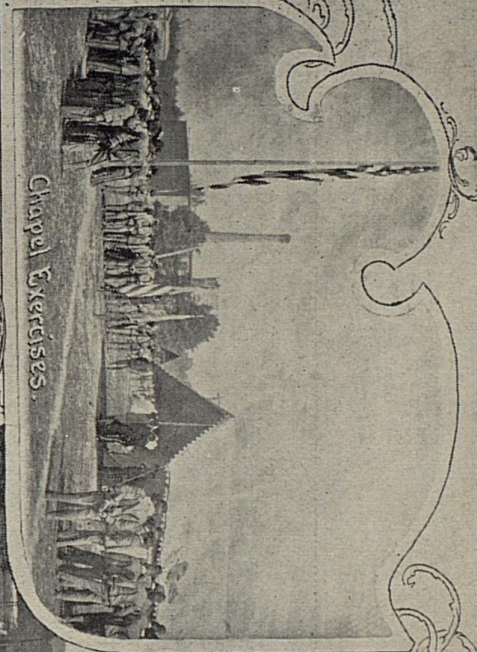
Running broad jump 22 feet 4½ inches.



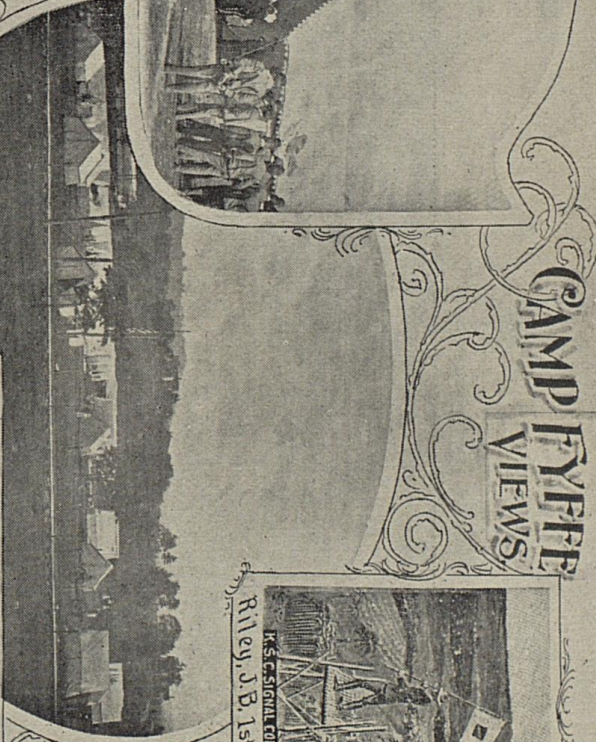
BASE BALL TEAM, 1900.

- | | | |
|--------------------|--------------------|-------------------------|
| 1. Bronston, r. f. | 3. Elliott, 3b. | 4. Gilbert, 1b. |
| 5. Rippey, 2b. | 6. Kelly, pitcher. | 7. Gibson, c. f. |
| 9. Smith, s. | 10. Campbell, c. | 11. John Kehoe, Manager |

CAMP FIVE VIEWS

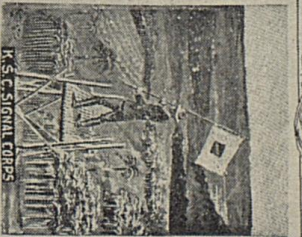


Chapel Exercises

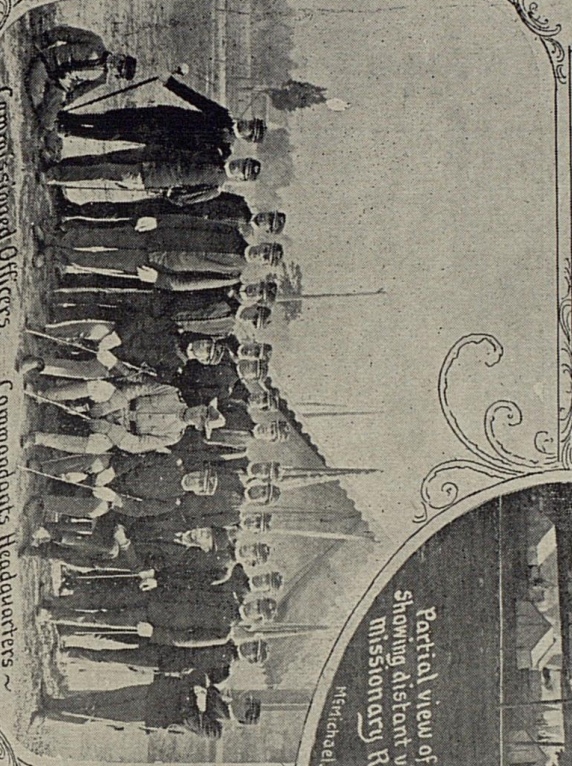


Partial view of Camp showing distant view of Missionary Ridge.

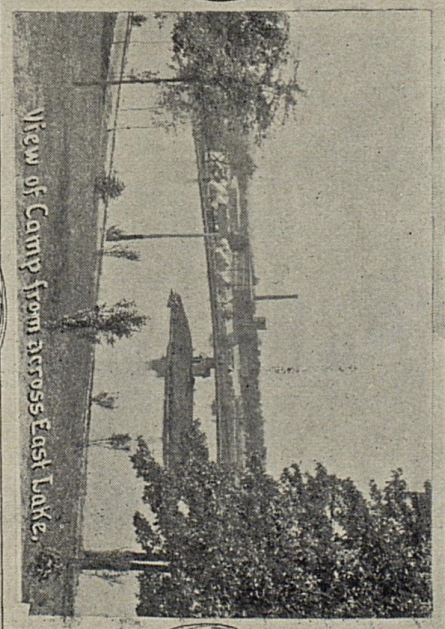
Michael, Designer



Riley, J. B. 1st Sergt.



Commissioned Officers. Commandant's Headquarters



View of Camp from across East Lake.



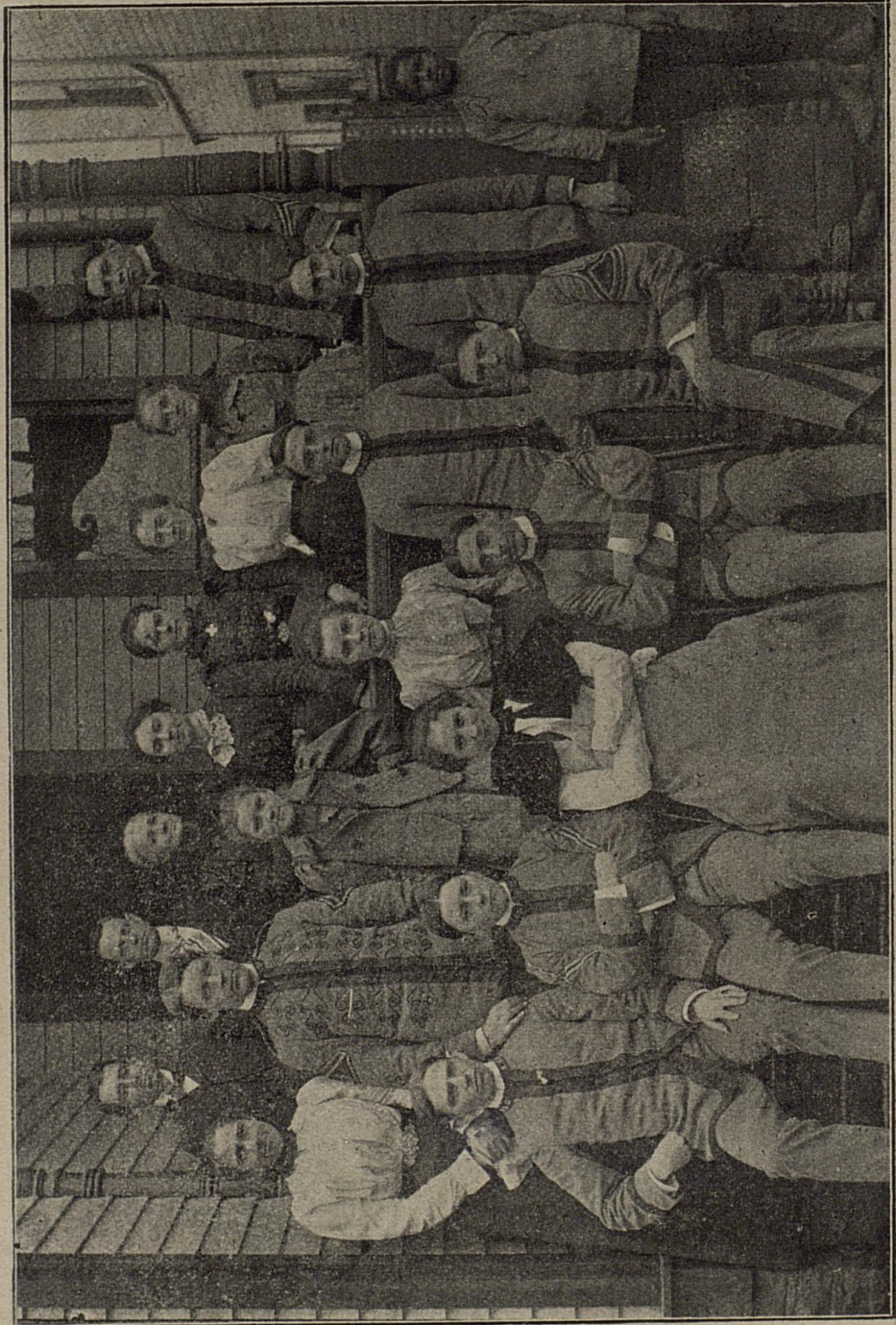
Various Views

*In and around the College, from photographs made,
with one or two exceptions, on a regular school day.*



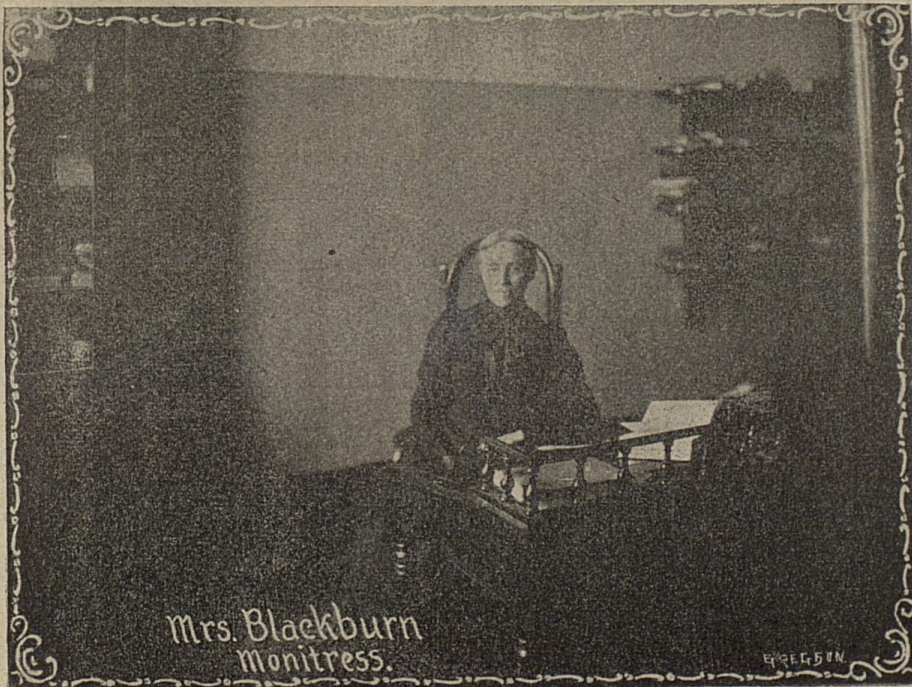
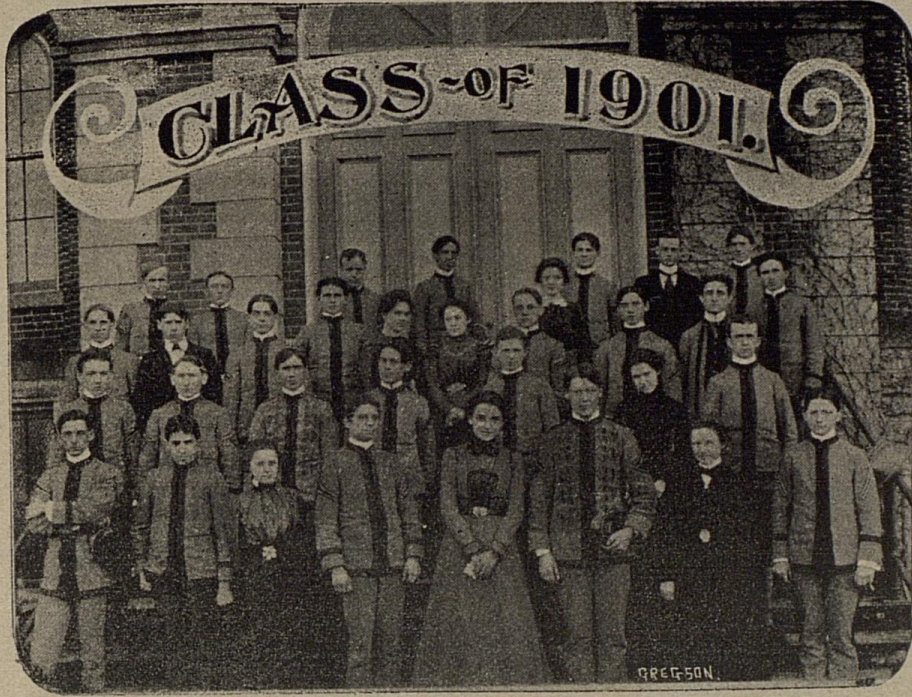


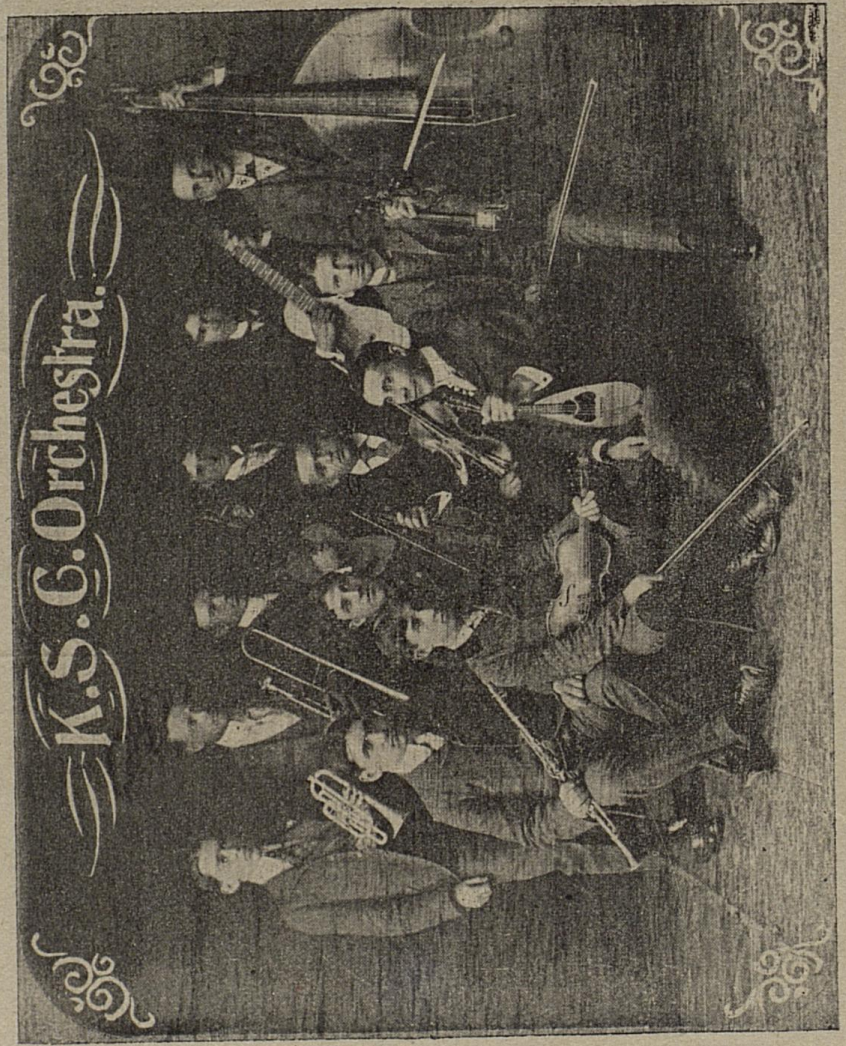
POST PROELIA PRAEMIA.



Group of State College Students at Mrs. James' Boarding House.

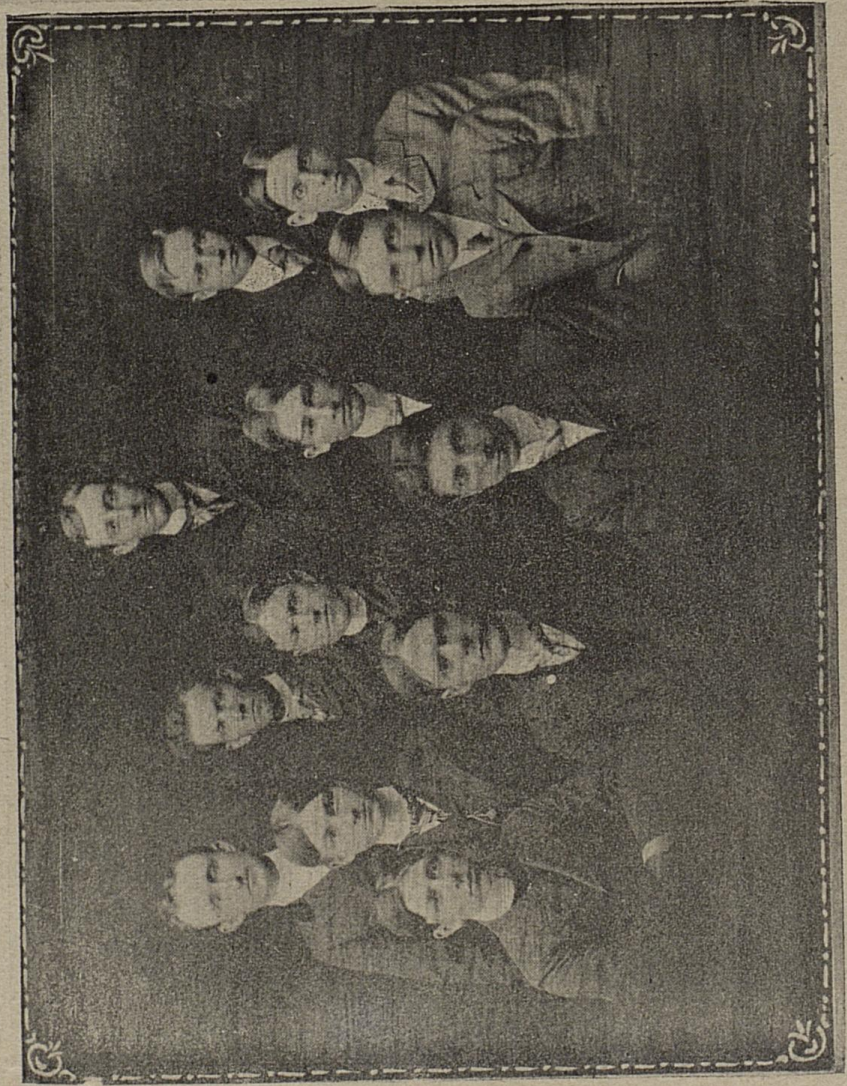
Group of State College Students at Mrs. James' Boarding House.







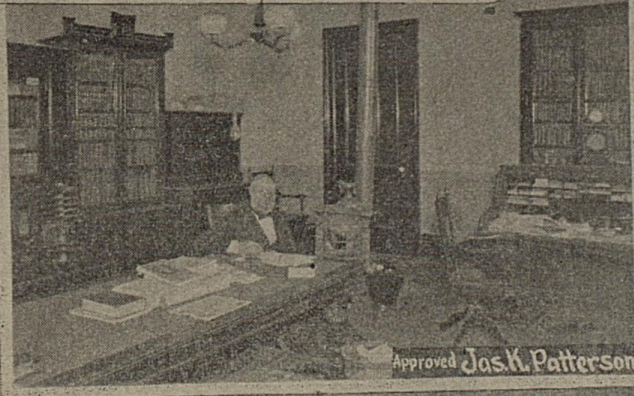
Capital Hotel Club.



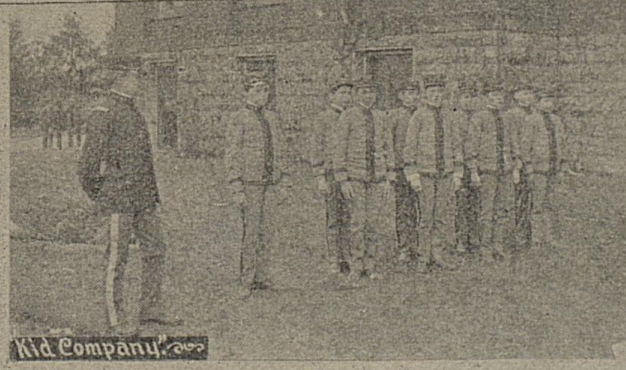
Graft House Club.



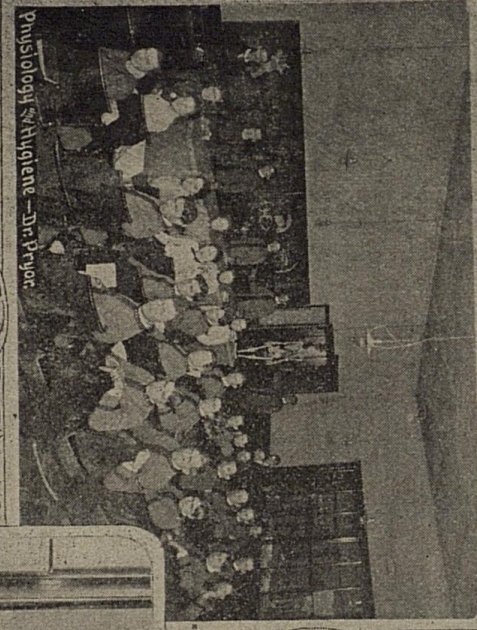
Class in Geology—Prof. Miller.



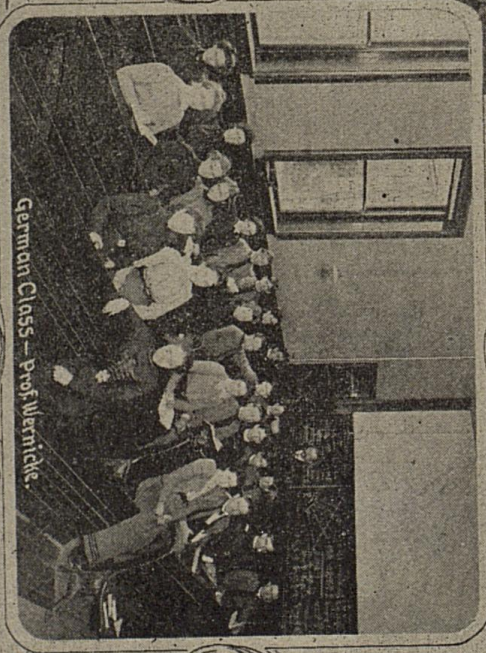
Approved Jas. K. Patterson



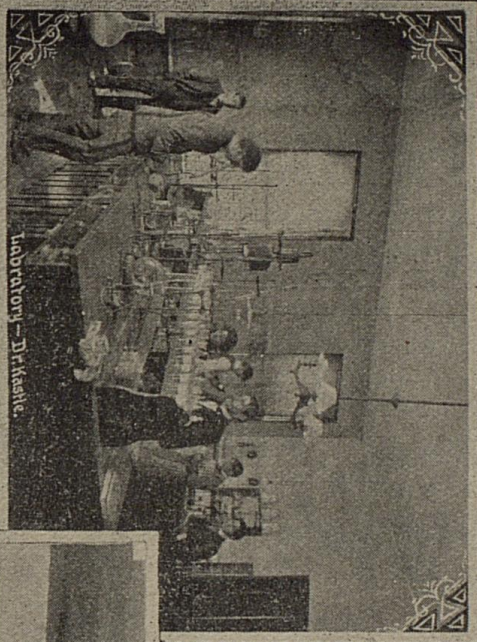
Kid Company



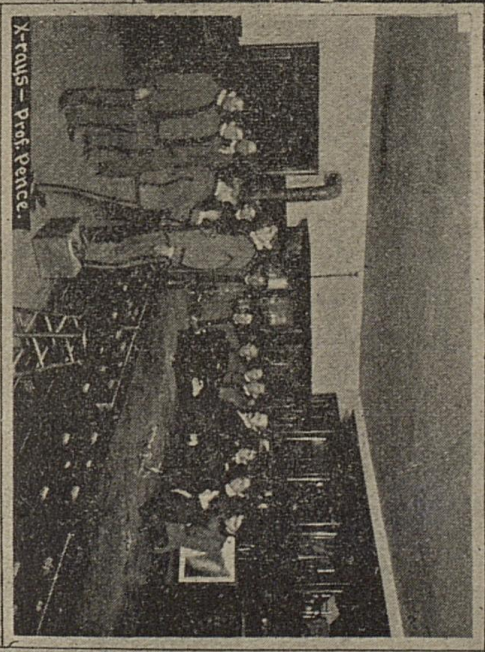
Physiology & Hygiene - Dr. Pryor



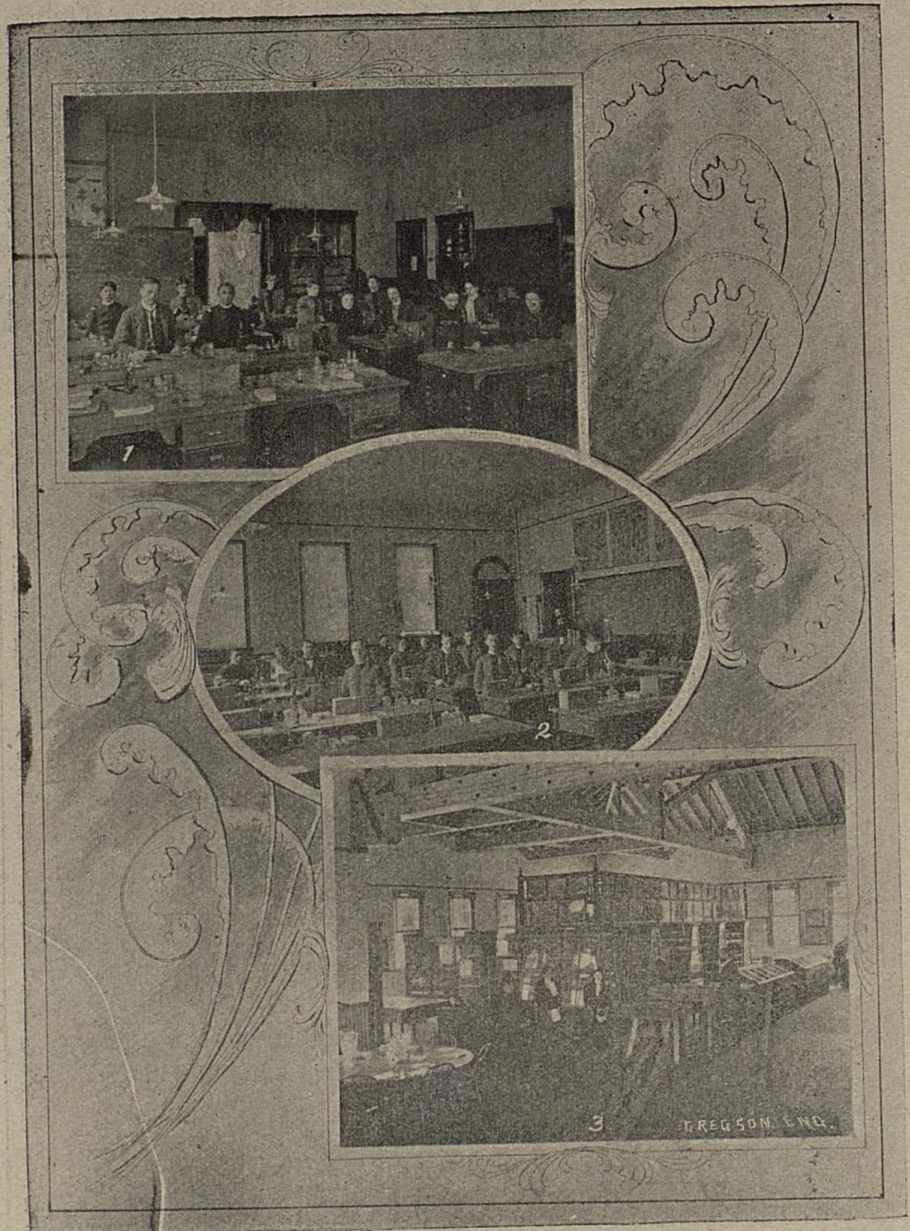
German Class - Prof. Merrick



Laboratory - Dr. Kashe

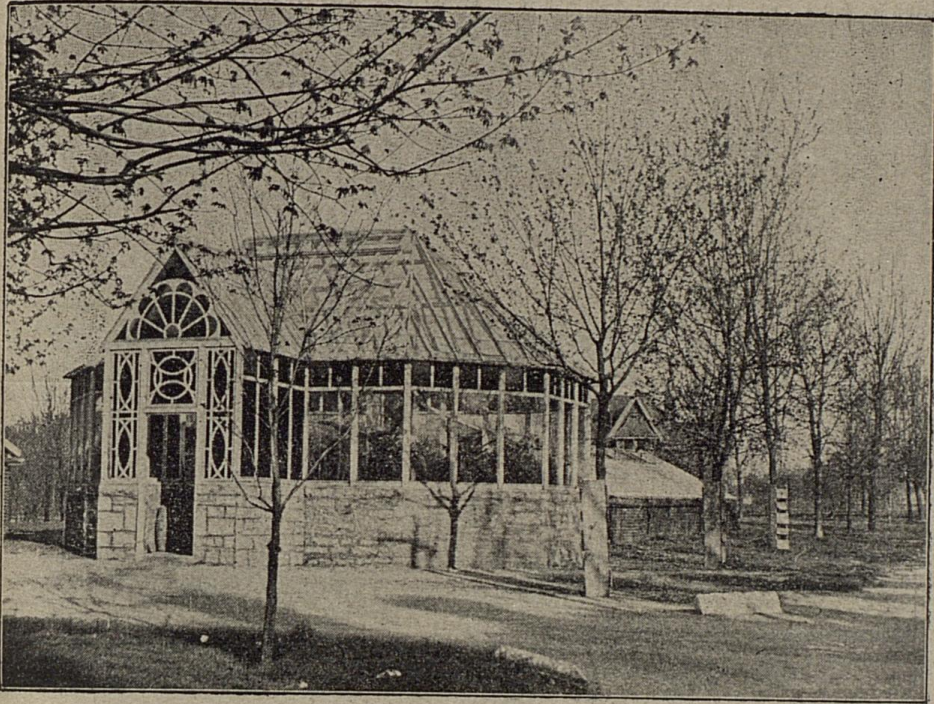


X-rays - Prof. Perce.

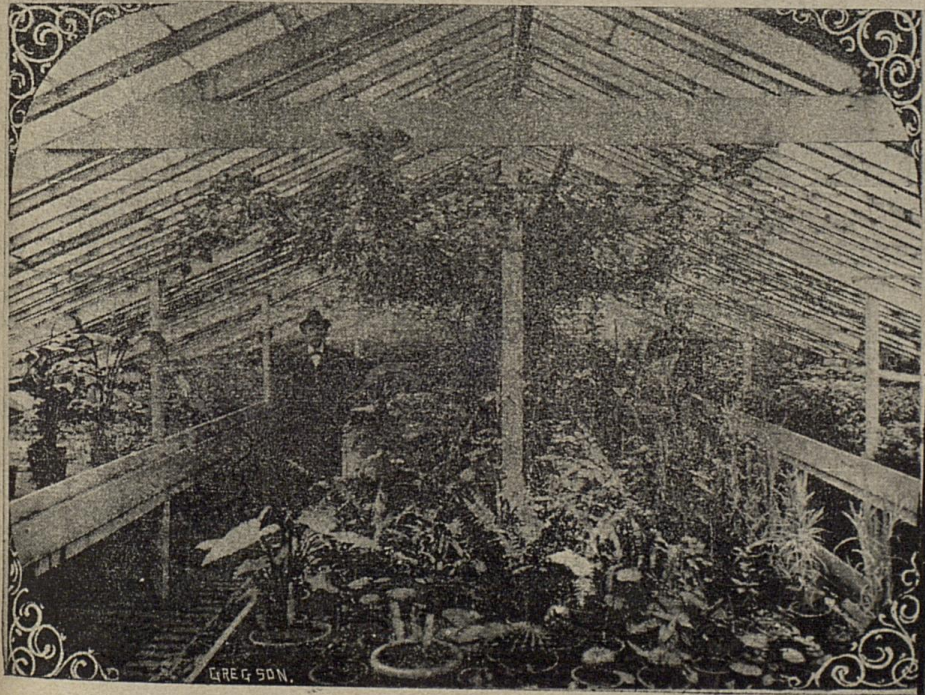


Interior Views Natural Science Building.

The Sweetest Place in Kentucky.



K. S. C. Green House. Capt. Murray.



Interior View. Capt. Murray on left.



AGRICULTURAL AND EXPERIMENT STATION, STATE COLLEGE.
Melville Amasa Scovell, Director; Alfred Meredith Peter, Chemist; Henry Ernest Curt
Chemist; Harrison Garman, Botanist and Entomologist; Clarence Wentworth Mather
Horticulturist; Edward Rhorer, stenographer; Joseph Nelson Harper, Superintendent
Wallace Appleton Beatty, M. S., William Henry Scherfflus, B. S., Assistants in Chemist

French.



Knights of the Bucket and Broom.

French. "Doc." John John. "Judge." Harry. Charlie

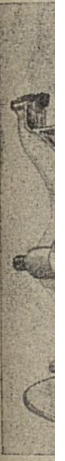
nest Curt
n Mathew
rintender
Chemist



PROF. ALEXANDER ST. CLAIR MACKENZIE
The new Professor of English.

The new course in English prepared by Prof. MacKenzie is as broad and comprehensive as that of any school in this country.

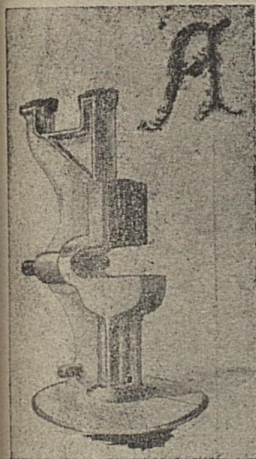
m



of B
The
of m

Mechanical and

Electrical Engineering.



AS A technical institution stands the School of Mechanical and Electrical Engineering of the State College, stands today without a peer in the whole South. The graduates from the State College of Kentucky in this particular line of work have been able to cope with the graduates from the oldest technical schools of America, and at the present time there is a demand for the graduates which justifies the belief that this school is destined to be one of the foremost technical schools in the country, whose mission will be to educate in engineering the sons of the South.

The graduates in this year's class who will take the degree of Bachelor of Mechanical Engineering are hereafter mentioned. They will all enter at once upon active careers in the profession of mechanical engineering.



PROFESSOR F. PAUL ANDERSON,
Dean of the School of Mechanical and Electrical Engineering,
Kentucky State College.

J
18, 1
nault
of Me
Mr. C
ventil
system
in the
nized
peer
is to
fan sy
four t
ture o
30 cu
the b
enter
heatin
in the

MECHANICAL ENGINEERING CLASS, 1900.



JAMES MADISON GRAVES.

James Madison Graves was born in Lexington, Ky., August 18, 1878. He received his early education from Prof. D. A. Chennault, of Lexington, and in September, 1896, entered the School of Mechanical and Electrical Engineering of the State College. Mr. Graves' thesis is a design of a hot blast system of heating and ventilating for Mechanical Hall, State College. The sanitary system of heating and ventilating is fast becoming a prime feature in the design of modern buildings, and the fan system is recognized by all reputable engineers and architects to stand without a peer in heating appliances. In this design the Mechanical Hall is to be heated and ventilated by the most improved method of the fan system, and according to the plan a complete change of air, four times per hour, will be furnished, and the average temperature of 70 degrees Fahr. will be maintained. It is calculated that 30 cubic feet of fresh air per minute per person will be put into the building. Immediately upon graduation Mr Graves will enter the employ of the Buffalo Forge Company, the well known heating and ventilating firm of Buffalo, N. Y. His work will be in the designing room.



LEON KAUFMAN FRANKEL.

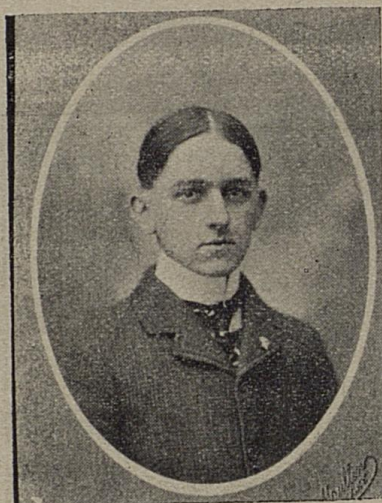
Leon Kaufman Frankel was born in Louisville, Ky., 1878. He attended the Louisville public schools and graduated from the Louisville Manual Training School in 1897, taking first honors. He entered the mechanical engineering course of the State College in September of 1897. Mr. Frankel's thesis consists of the design of a 50 horse-power automatic cut-off engine. This engine is to be built in the State College shops for use in the State College laboratories. Throughout the design every effort has been made to produce an engine whose operation is economical, whose parts are as simple and few in number as possible, and in which the material is distributed in the most advantageous manner so as to produce strength and symmetry. The design includes all the working drawings ready for the pattern maker and machinist. Mr. Frankel is the honor man of the Class of 1900 from the School of Mechanical and Electrical Engineering, and will be retained by the college next year as an instructor in the department from which he graduated.

Sta
nar
leg
Sta
Sta
the
gin
of t
as t
of p
test
by
stor
Da
sue
Co
nee



JOHN PELHAM JOHNSTON.

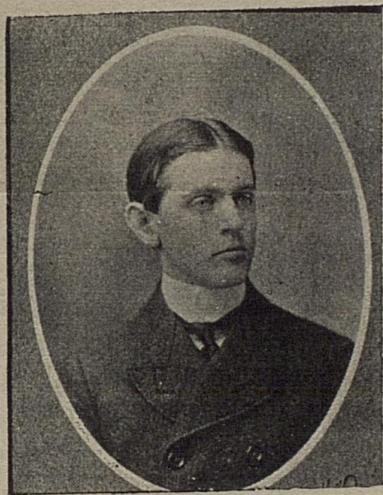
John Pelham Johnston was born August 24, 1881, at Bryan's Station, near Lexington, Ky. He received most of his preliminary education in the county school. He entered the State College of Kentucky in February, 1894; attended the Louisiana State University during the session of 1895-96 and re-entered the State College of Kentucky in September, 1896. Mr. Johnston's thesis consists of a duty test of the 3,000,000 gallon pumping engine at the Lexington Waterworks pumping station. The object of the test is to determine the efficiency of the pumping engine so as to express either in heat units or in dollars and cents the cost of pumping every gallon of water under certain conditions. The test throughout was conducted by the standard method outlined by the American Society of Mechanical Engineers. Mr. Johnston was assisted in his thesis work by two juniors, Messrs. Frank Daugherty and F. T. Seibert. Mr. Johnston has decided to pursue his engineering education further and will return to the State College next year for post graduate work in mechanical engineering.



JAMES GRAVES SCRUGHAM.

James Graves Scrugham was born January 19, 1881, in Lexington, Ky., and received his elementary training in the public schools of Lexington, graduating from the Dudley High School in 1896. He entered the Freshman Class of the Kentucky State College in September, 1896. Mr. Scrugham's thesis is the design of a street railroad plant for a line between Lexington and Nicholasville, Ky. The whole subject has been worked up with the greatest possible care, and if this road should be built Mr. Scrugham's lay-out could be used without change. The cost of the power plant equipment and rolling stock will be about \$80,000, while the road bed and over-head construction will be about \$100,000. The electric power is to be supplied from two Thompson-Ryan dynamos, one 150 kilo-watt and one 100 kilo-watt, each guaranteed for 50 per cent overload. The motive power will be two McEwen tandem compound engines, one 12 in. and 20 in. by 16 in. and one 11 in. and 18 in. by 14 in. The steam is to be supplied from two 160 horse-power boilers, equipped with Hawley "Down Draft" furnaces. The boiler feed pump is to be of the duplex type and the feed water is to be heated by means of two "American heaters." Mr. Scrugham immediately upon graduation will take a position with the Creaghead Engineering Company, of Cincinnati. The principal business of this firm is the construction of street railway and motive power plants.

Ky
fro
the
Po
Ho
tes
the
oth
M
wi
Sn



JOSHUA SOULE SMITH, JR.

Joshua Soule Smith was born August 12, 1880, in Lexington, Ky. He attended the public schools of Lexington, graduating from the same in 1896; entered the State College of Kentucky in the fall of 1896. Mr. Smith's thesis is an Efficiency Test of the Power, Heating and Lighting Plant at the Fayette County Court House. The discussion consists of boiler, engine and generator tests, made independently at first and afterward combined so that the losses in the transmission of energy from one machine to another can be accounted for. Immediately after commencement Mr. Smith will assume the duties that have been laid out for him with the Chicago & Alton railroad at Bloomington, Ill. Mr. Smith was assisted in his thesis by Junior G. R. Klein.

Lex-
public
School
State
e de-
n and
o with
lt Mr.
ost of
\$80.
about
homp-
, each
will be
in. by
e sup-
awley
of the
of two
radua-
Com-
is the



LEWIS ANDREW DARLING.

Lewis Andrew Darling was born at Carrollton, Ky., June 27, 1879. He was educated in the Carrollton public schools and graduated from the Carrollton High School in 1896. The importance of adequately heating, ventilating and lighting buildings cannot be questioned, and in the last few years many articles have been written on ventilation, and it is equally as important to ventilate a building well as to furnish it with sufficient heat and light. The mechanical engineer is certain to be confronted by problems along this line some time in his career. In order to investigate and solve such a problem Mr. Darling chose as his thesis the Design of a Modern Heating, Ventilating and Lighting Plant for the Postoffice and Custom House, Lexington, Ky. After familiarizing himself with the advantages and disadvantages of modern heating, lighting and ventilating systems which most efficiently fulfill the conditions to be met, according to Mr. Darling's judgment, the hot blast system was selected. The hot blast system is to be employed and will change the air three times per hour in the rooms on the first floor and twice per hour in the rooms on the second floor. The exhaust steam from the engines operating the dynamos will be used for heating. Enclosed arc lights will be used on the outside of the building and in the corridors, incandescent lamps being used elsewhere throughout the building. Mr. Darling will at the beginning of the next college year assume his duties as Assistant Professor of Mechanical Engineering at the University of Nevada, located at Reno, Nev., to which position Mr. Darling has recently been elected. Mr. Darling was assisted in his thesis work by Junior F. G. Cutler.

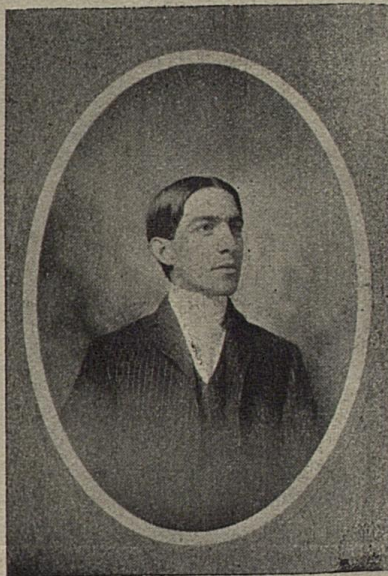
tuck
Sch
Mr.
of t
Rai
riou
dete
poi
riou
mar
mar
of I



JOSEPH FRANKLIN MUSSELMAN.

Joseph Franklin Musselman was born in Scott county, Kentucky, February 4th, 1879; he attended the Cynthiana Graded School and Professor Smith's School for Boys in Cynthiana. Mr. Musselman's thesis consists in a Discussion of the Efficiency of the Steam Machinery at the Power Plant of the Lexington Railway Company. Tests were made of the engines driving various dynamos; a considerable part of the discussion consists in determining the percentage of moisture in the steam at various points in the main steam line. These tests were made under various conditions of height of water in the boilers. Mr. Musselman was assisted in his work by Mr. E. T. Lyle. Mr. Musselman has already taken up work with Joseph McWilliams & Co., of Louisville, Ky., in the drawing room.

June
and
im-
ings
have
ven-
ight.
lems
gate
De-
r the
ariz-
dern
ently
udg-
em is
r in
n the
g the
ll be
ndes-
Mr.
e his
t the
ition
isted



THOMAS ASHBROOK NICHOLS.

Thomas Ashbrook Nichols was born February 17th, 1879, in Lexington, Ky., and attended the public schools of Lexington, graduating in 1896. Mr. Nichols' thesis consists in an Experimental Study of the Power, Heating and Lighting Plant of the Phoenix Hotel, of Lexington. Efficiency tests were made of the boilers, engines and dynamos for the purpose of determining the loss of energy in transmitting from one machine to another, and to determine ultimately the cost of producing energy in the shape of light and heat. Mr. Nichols was assisted by junior G. R. Klein. Mr. Nichols, immediately after graduation, will enter the employ of the Chicago & Alton Railroad Company, in the motive power department at Bloomington, Ill.

ville
ville
Tra
the
Pur
pou
incl
mal
to r
cyl
at t
ind
wor
ma
in t
cyl
the
der
unc
ily
wil



EUGENE FEIST RIESER.

Eugene Feist Rieser was born October 19th, 1880, in Louisville, Ky. He received his early education in the Louisville Graded Schools, graduating from the Louisville Manual Training High School in 1897. Mr. Rieser's thesis consists in the Design of the Steam End of a 5,000,000 gallon Waterworks Pumping Engine, to work against an ordinary pressure of 100 pounds and a maximum fire pressure of 165 pounds per square inch. The engine is a condensing, cross compound Corliss type, making twenty revolutions per minute. The cylinder ratio is 3 to 1; high pressure cylinder diameter 51 inches; low pressure cylinder diameter 29.3 inches. With a pressure of 125 pounds at the throttle, cutting off at 1-3 stroke in the high pressure cylinder, equal work is done in both cylinders and the ordinary working pressure of the pump is maintained. To develop the maximum pressure in the water cylinder, the cut-off is 1-2 stroke in the high pressure cylinder and steam enters the low pressure cylinder at about 60 pounds pressure. The design is such that the water cylinders will be directly connected to the steam cylinders. All parts have been designed for maximum stresses, and under most favorable conditions of operation. All parts are readily accessible to facilitate repair work. Upon graduation Mr. Rieser will enter the employ of the B. F. Sturtevant Co., of Philadelphia.

879,
ing.
Ex-
t of
le of
ning
ther,
the
G.
len-
the



JAMES BUCKLEY WILSON.

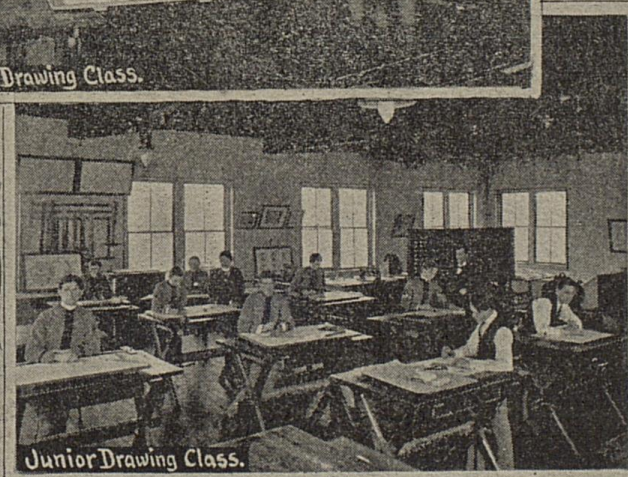
James Buckley Wilson was born in Vincennes, Ind., April 3, 1877. Mr. Wilson received his common school education in Jeffersonville, Ind., and Louisville, Ky., graduating from the Louisville Manual Training High School in 1897, taking post-graduate work in this institution during the year 1897-98. Mr. Wilson's thesis consists in the Design of a Polyphase Induction Motor, Direct Connected to a 24-ft. Drill Press. In this design the requirements of the modern machine shop are kept in view. The induction motor, the principal part of the problem, is designed to fulfill the demands of the drill press as regards power and speed. The same source of power lighting the shops may be used to operate the motor. In the design every effort has been made to so proportion the parts as to make an efficient, compact and attractive machine. Mr. Wilson upon graduation will enter the employ of the Chicago Edison Company.



Mechanical Seniors, 1900.

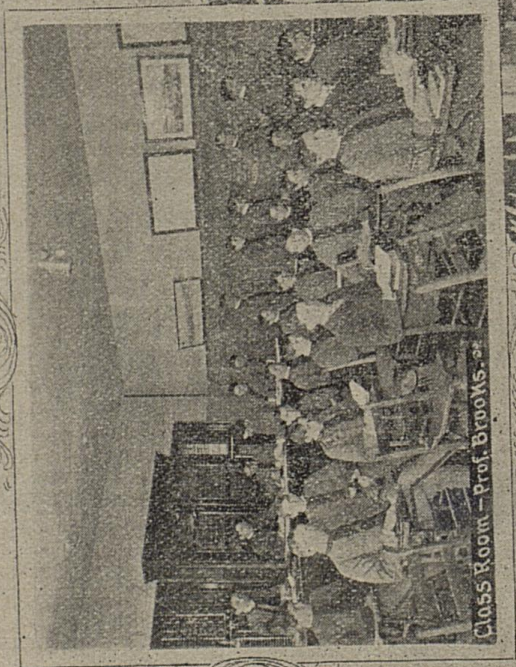


Senior Drawing Class.

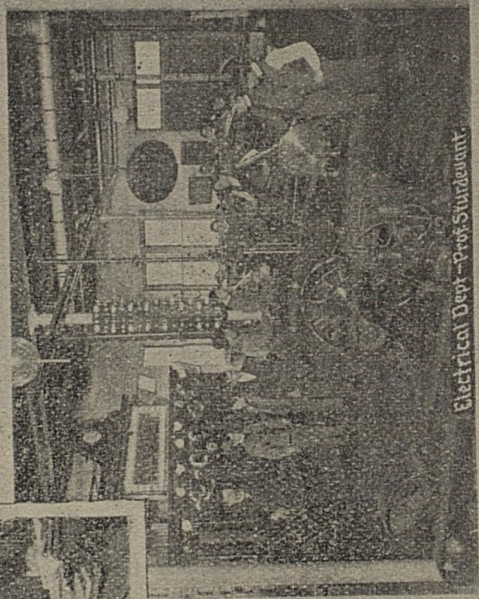


Junior Drawing Class.

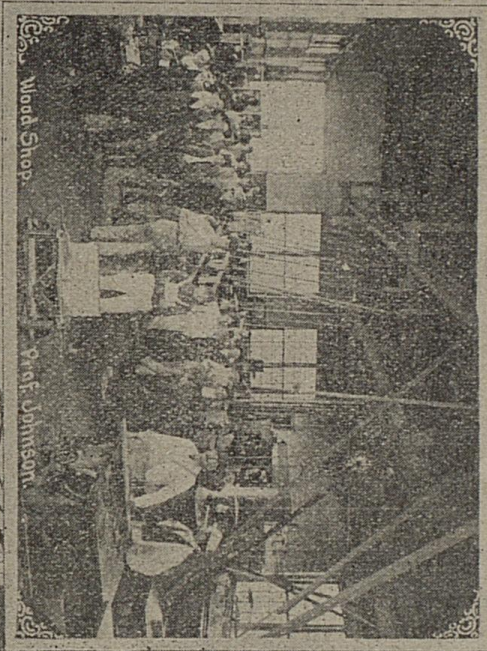
til 3,
Jef-
ouis-
uate
son's
, Di-
uire-
e in-
d to
eed.
o op-
o so
ract-
ploy



Class Room - Prof. Brooks.

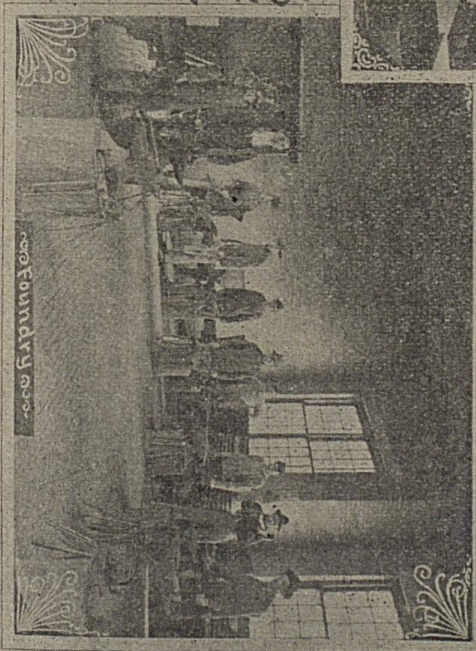


Electrical Dept. - Prof. Sturdevant.

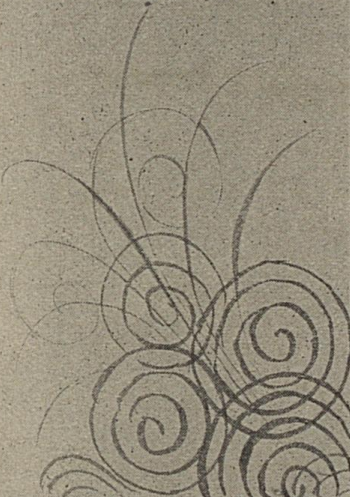


Wood Shop.

Wm. Johnson.

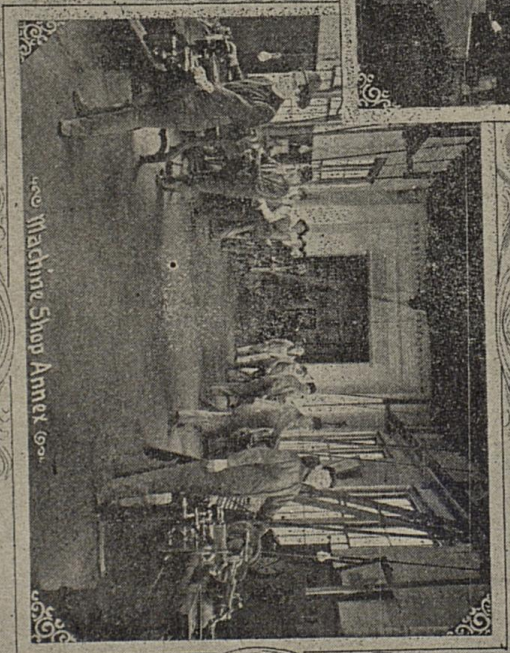


Foundry.

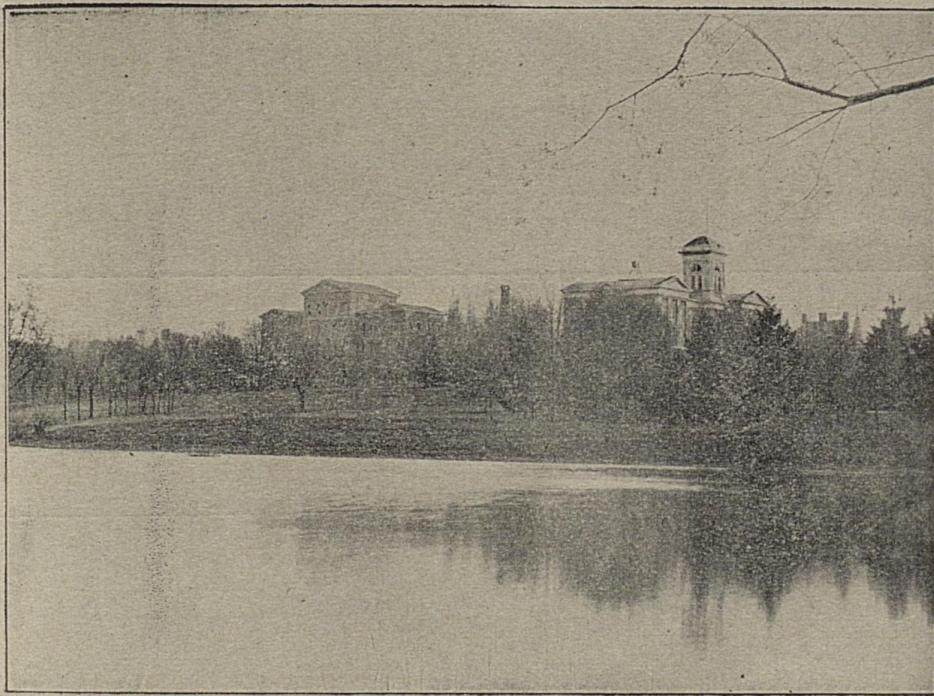




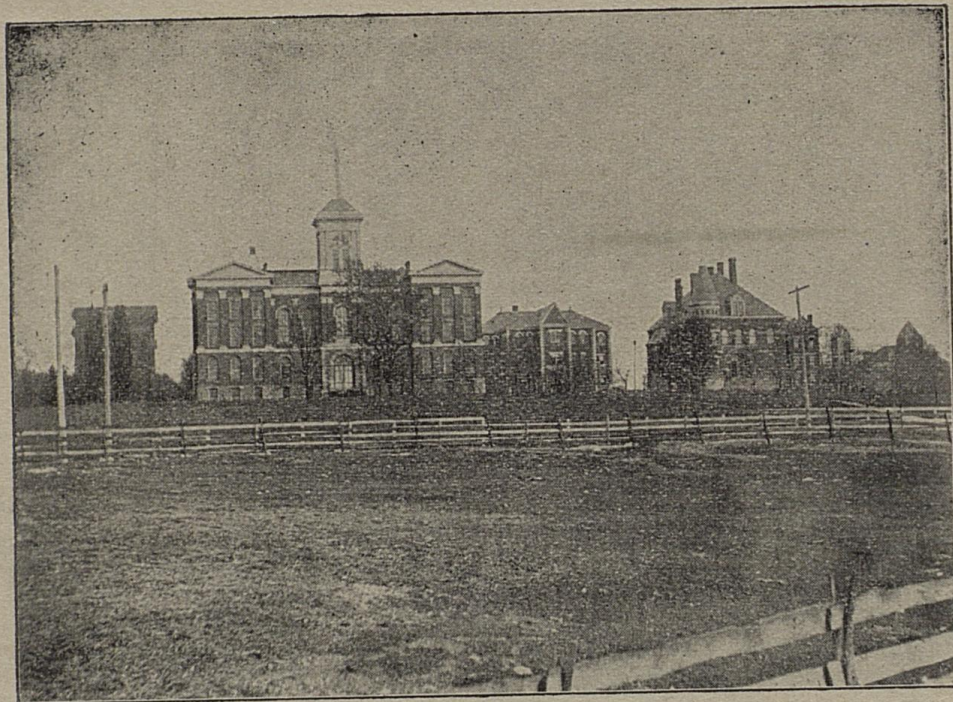
Machine Shop - Prof. Reid



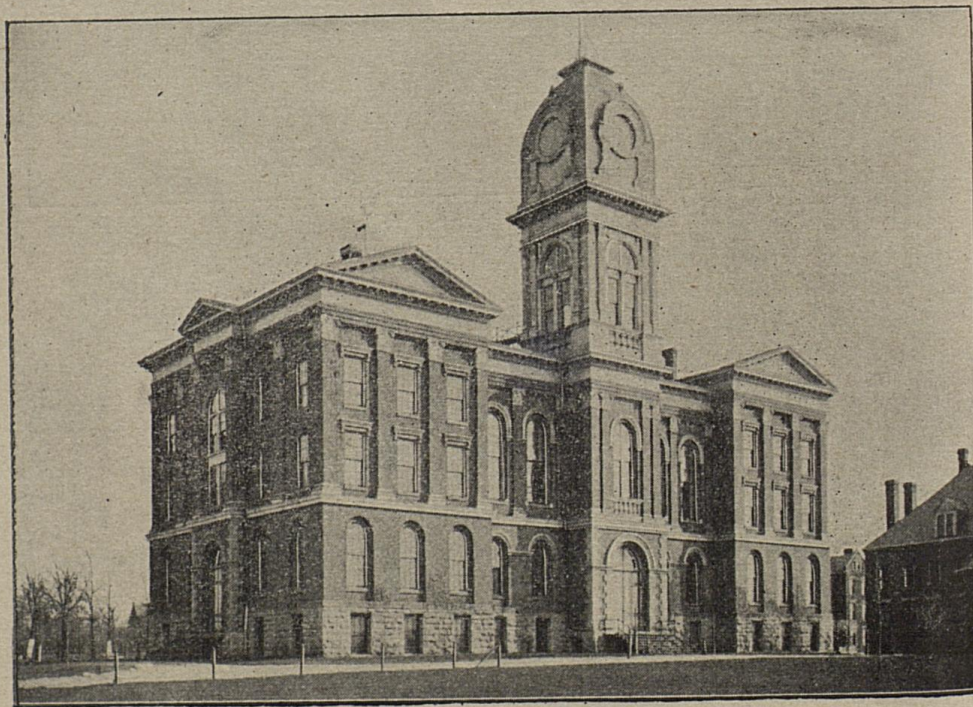
Machine Shop Annex



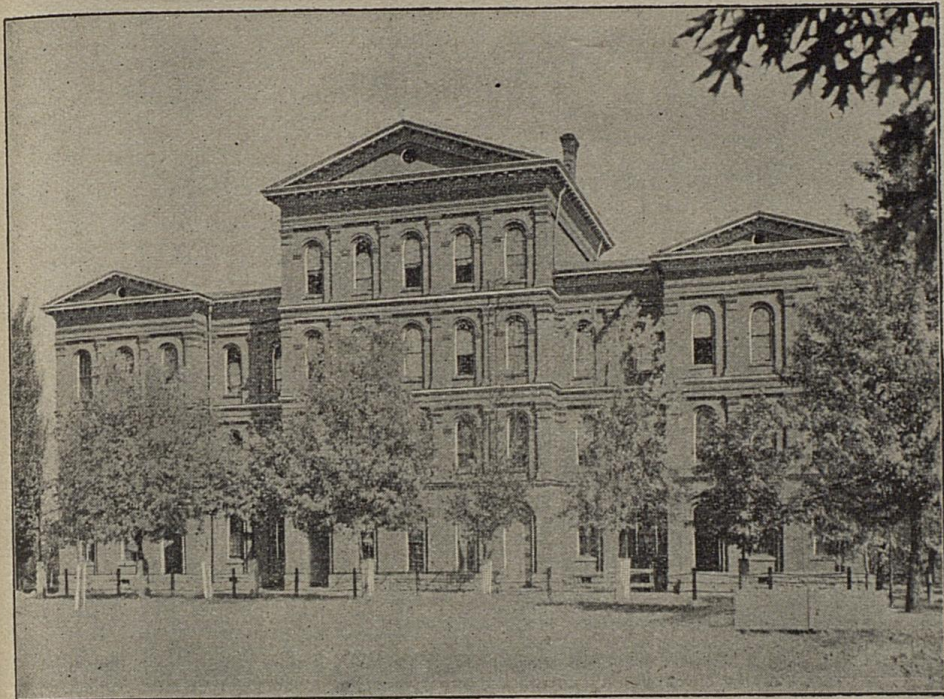
State College from Across the Campus Lake. One of the prettiest views in the South.



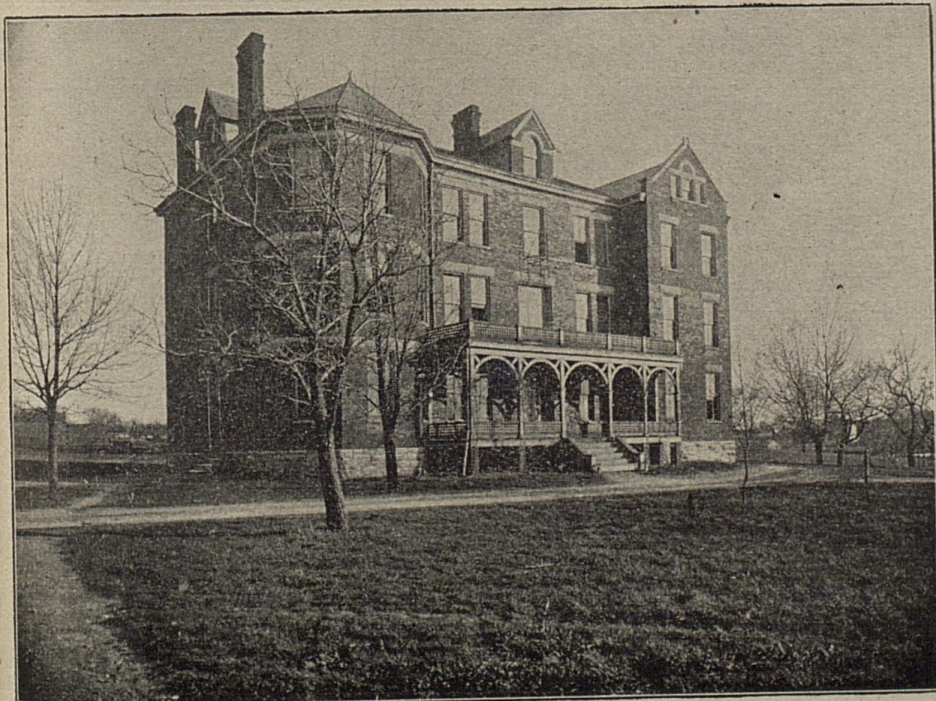
General View.



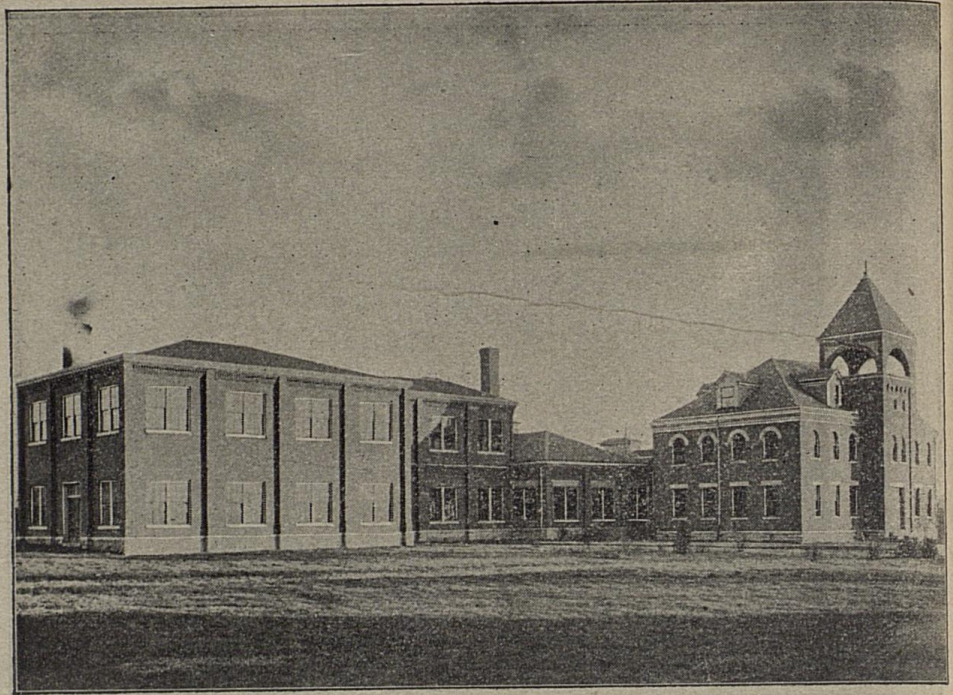
Main Building.



Old Dormitory.



New Dormitory.



Mechanical Hall.



Natural Science Hall.

No

Noted Views

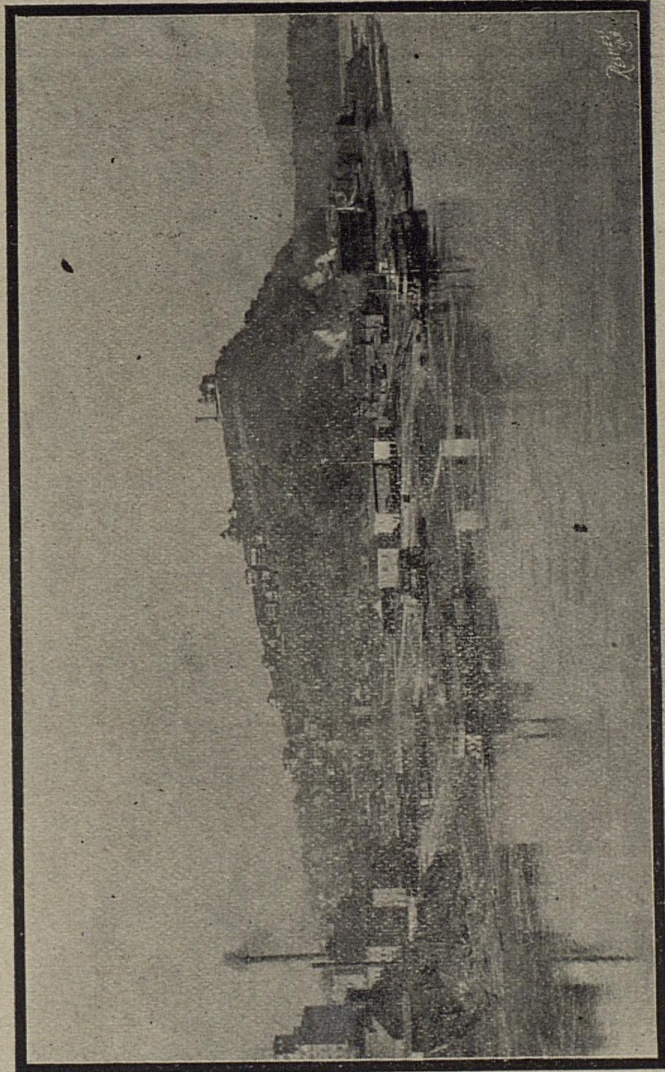
AROUND

Camp Fyffe

World Famous Scenery



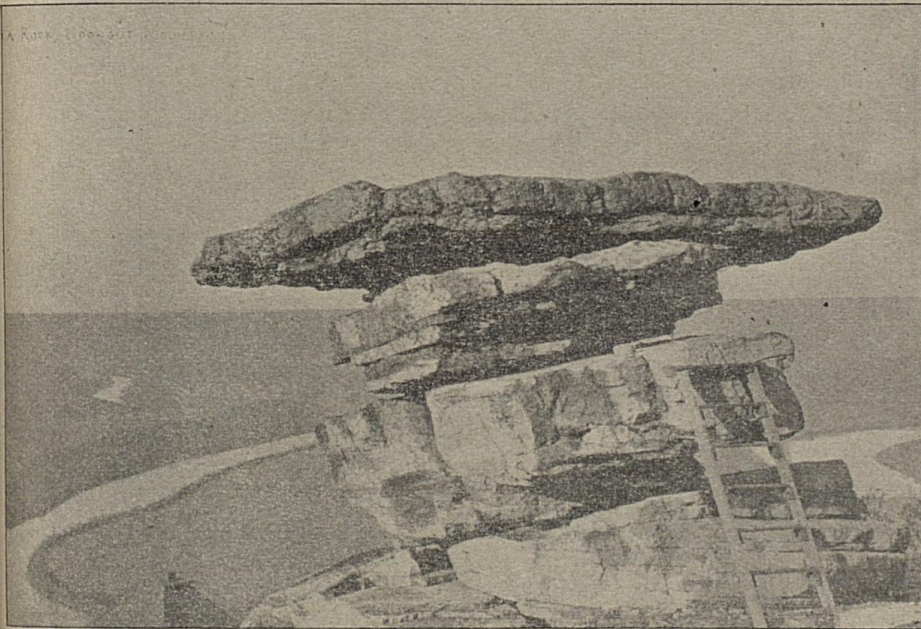
COLONEL J. P. FYFFE,
An Old State College Student, in Whose Honor the Camp Was Named.



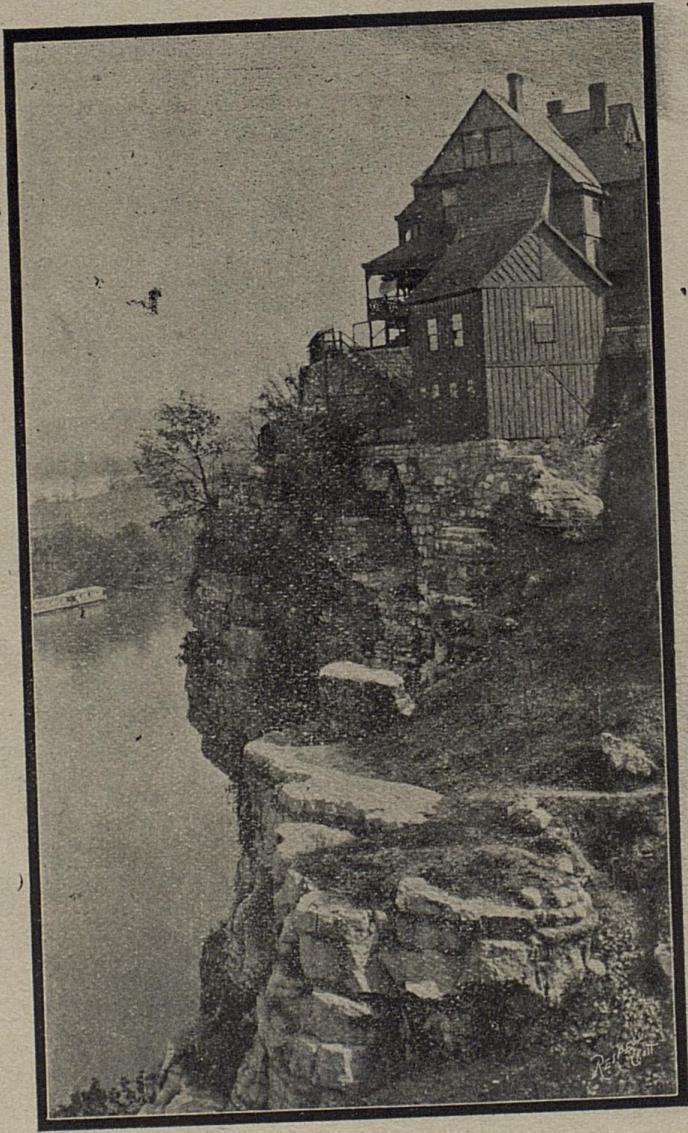
Cameron's Hill, in the Heart of Chattanooga.



*Famous Moccasin Bend, Showing Tennessee River Winding Around Chattanooga.
From photo taken from Point Lookout.*



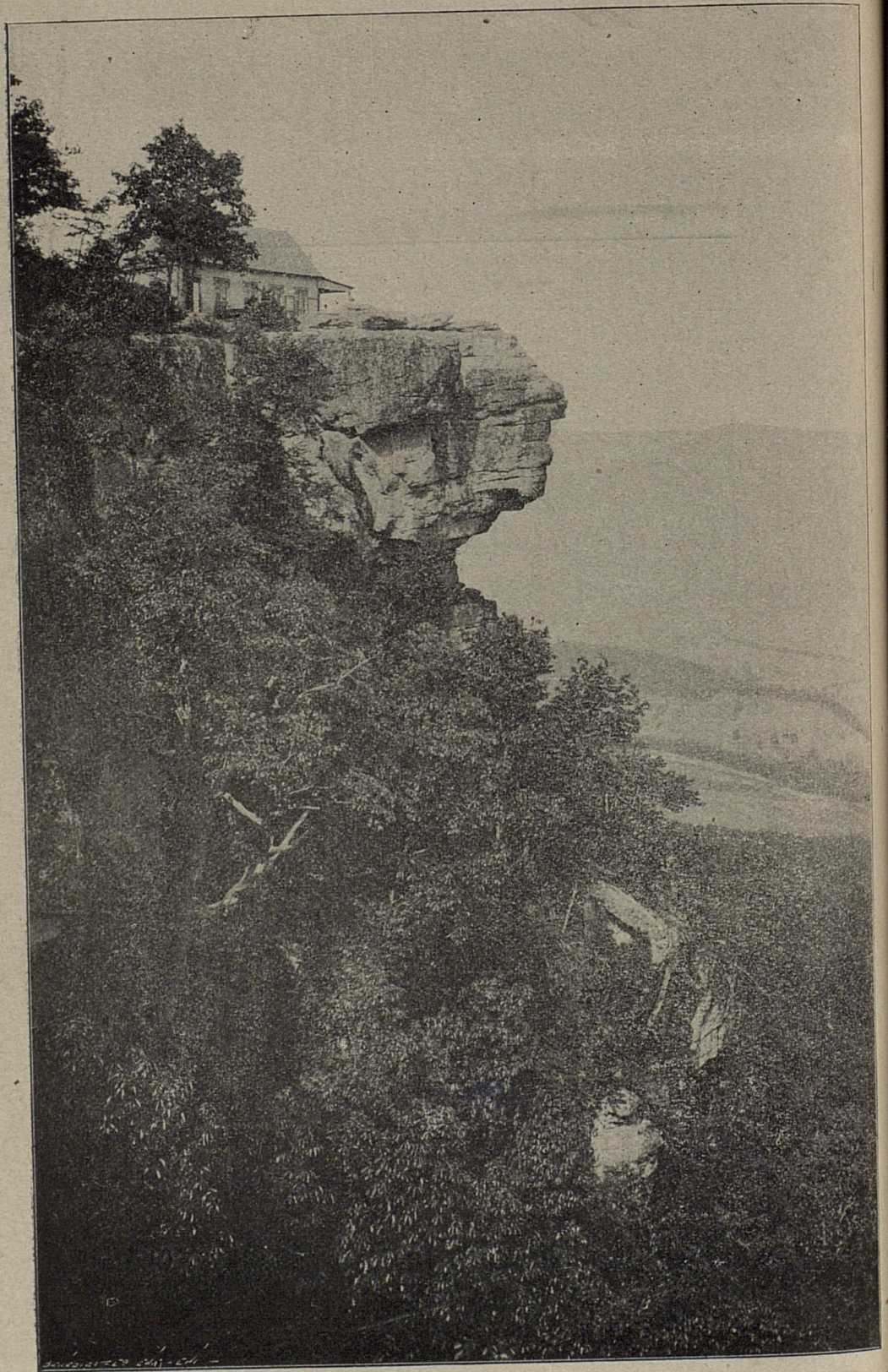
"Umbrella Rock," Lookout Mountain.



"The Cliff Dwellers." Bluff overlooking Tennessee River.

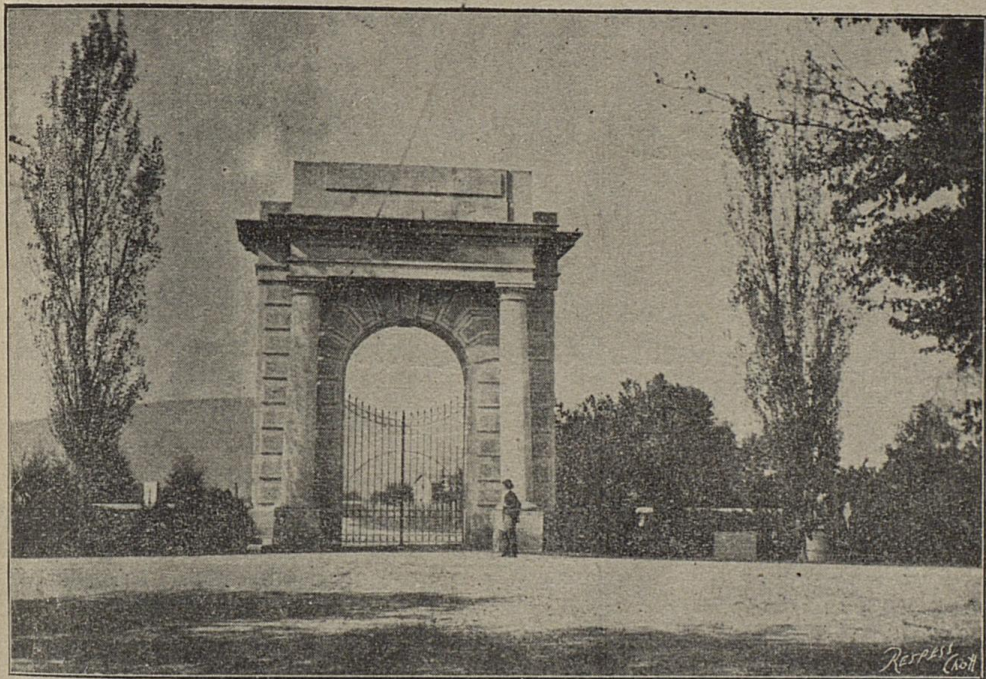


Lula Falls, showing Waterfall of 165 feet.



Point Lookout. At the age of 87, the world-famous historian Bancroft, standing on this point exclaimed: In all my travels I have never seen anything that surpasses this in sublime grandeur.

Entra



Entrance to National Military Cemetery. Here about 13,000 soldiers are buried. This magnificent arch was erected by the Government at a cost of about \$15,000.

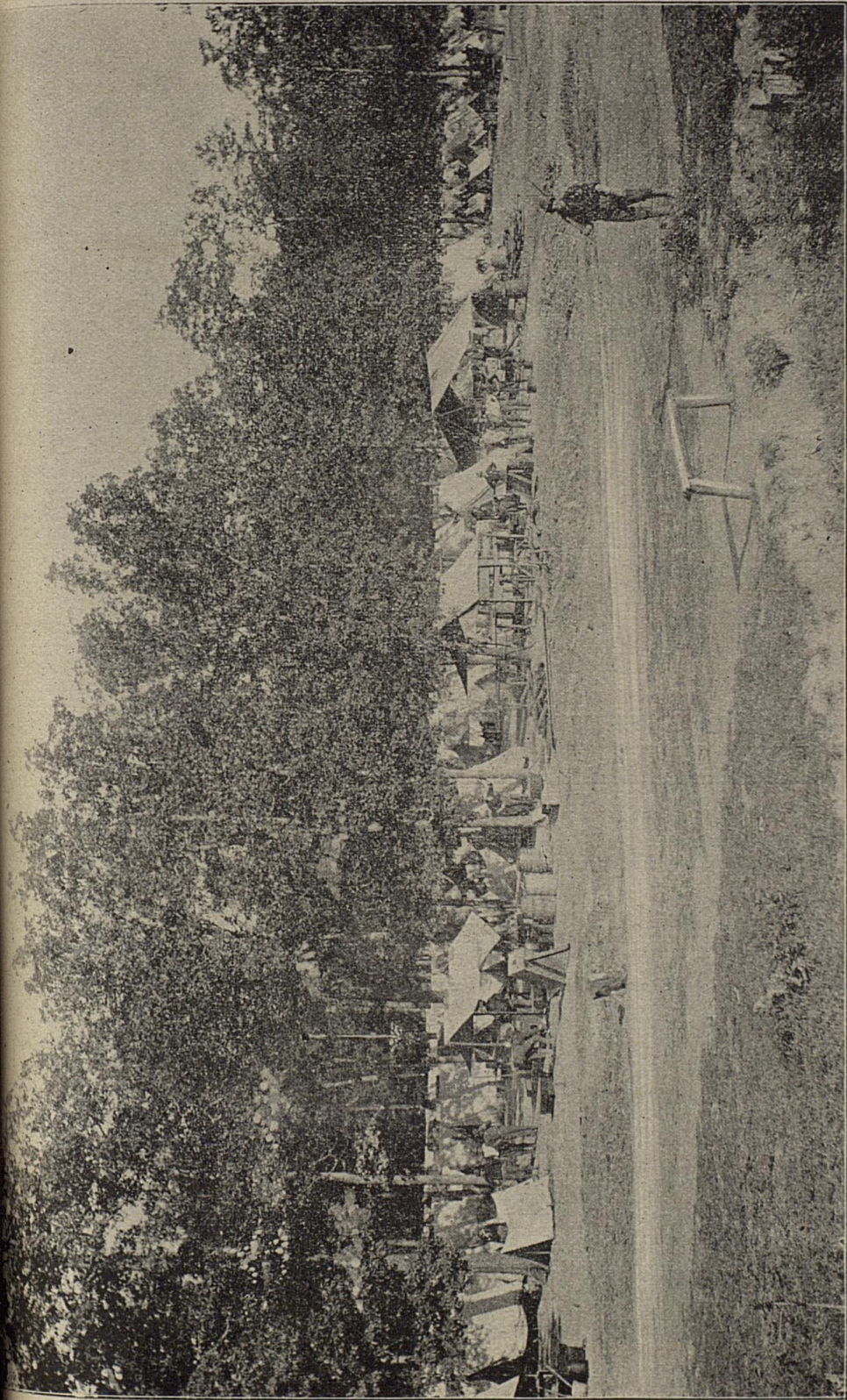
his point
grandeur.

Views of ❁❁❁

Chicamauga National

↪ Military Park

rk



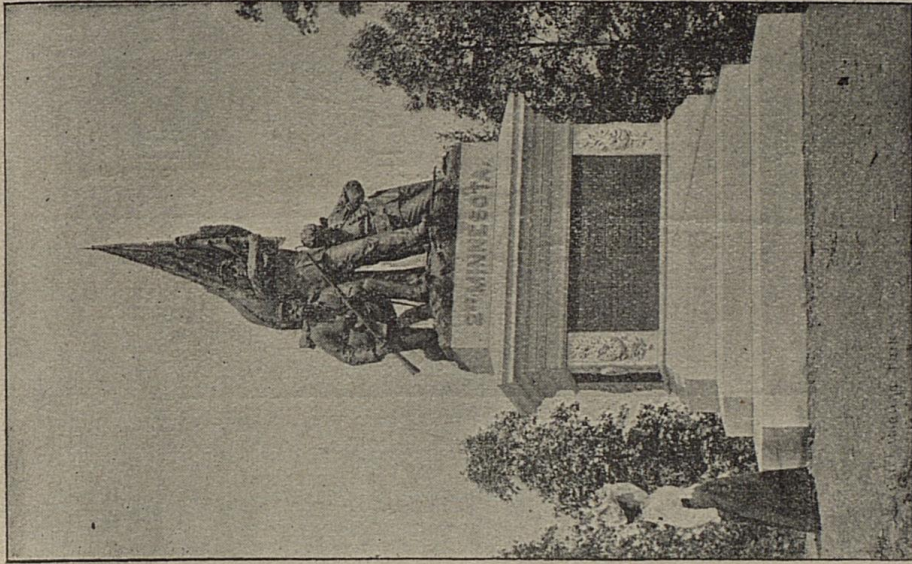
General View of Camp Thomas, Late War



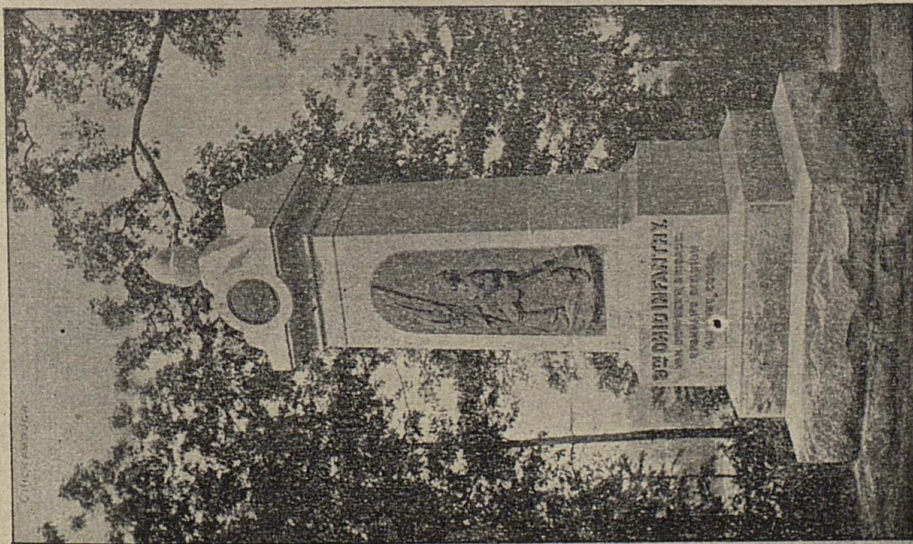
The Famous Snodgrass House.



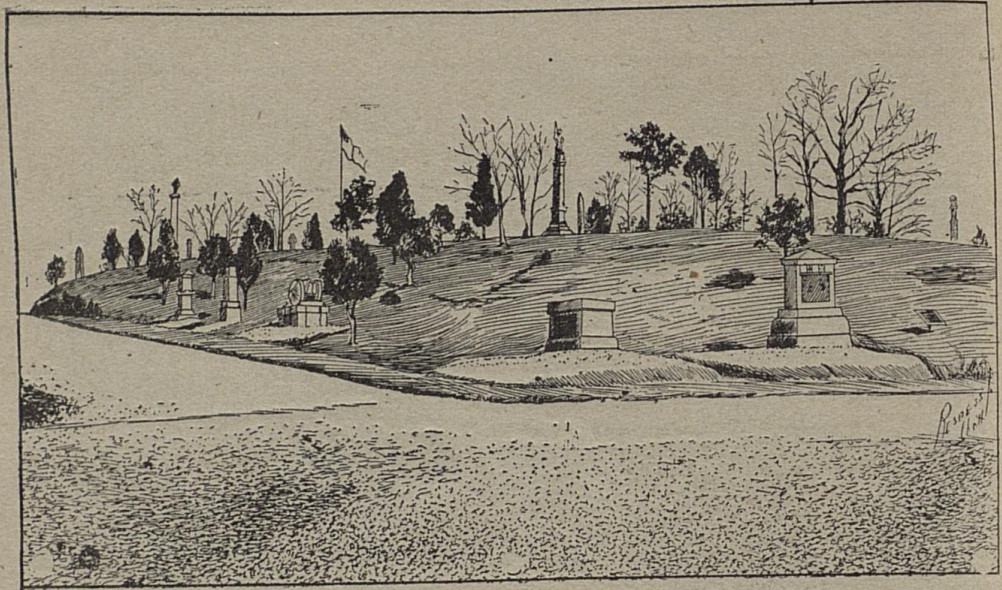
Marking the Fall of Brigade Commanders.



Second Minnesota.

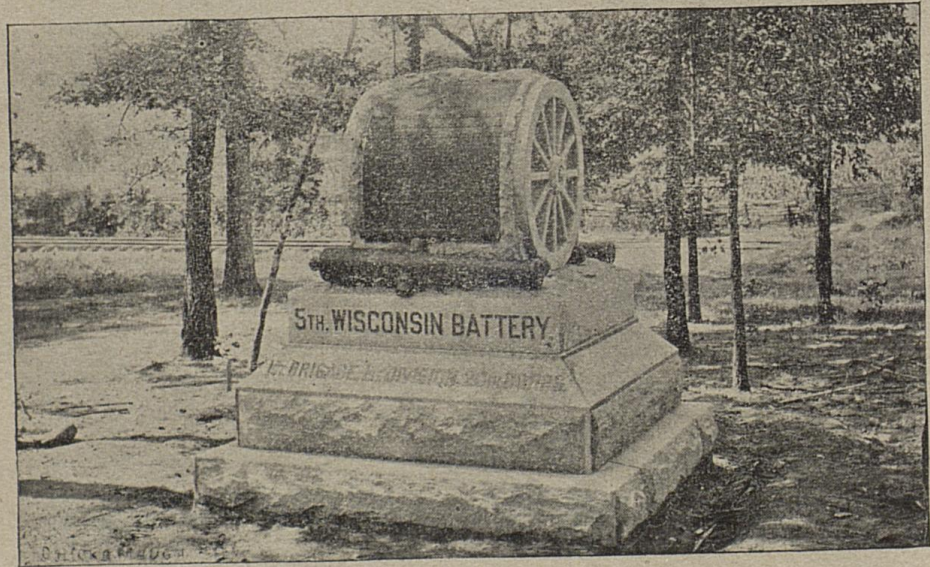


Ninth Ohio Infantry.



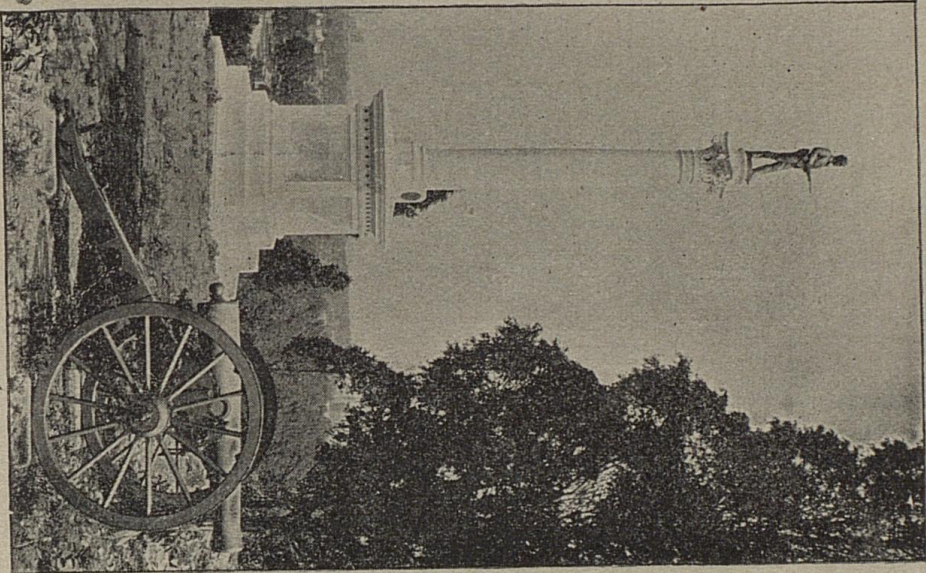
Orchard Knob.

New York (Orchard Knob)

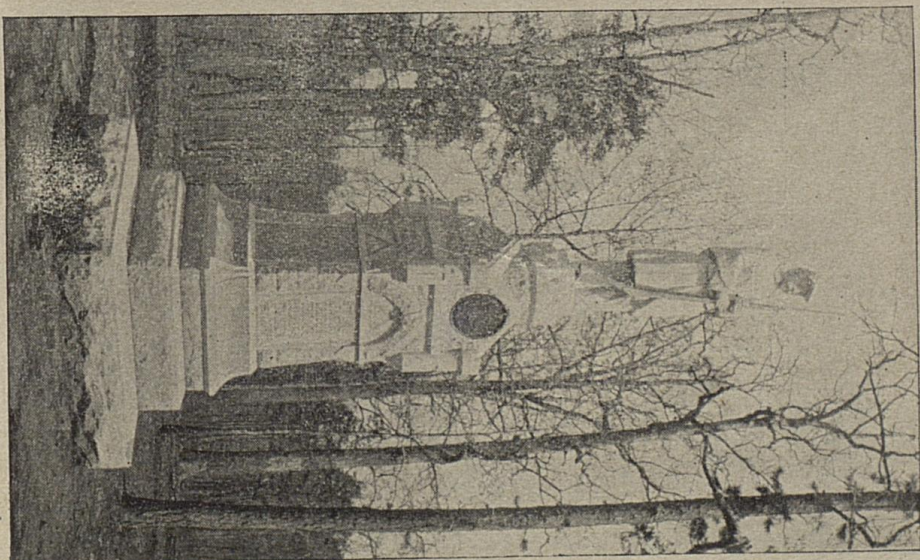


Fifth Wisconsin Battery.

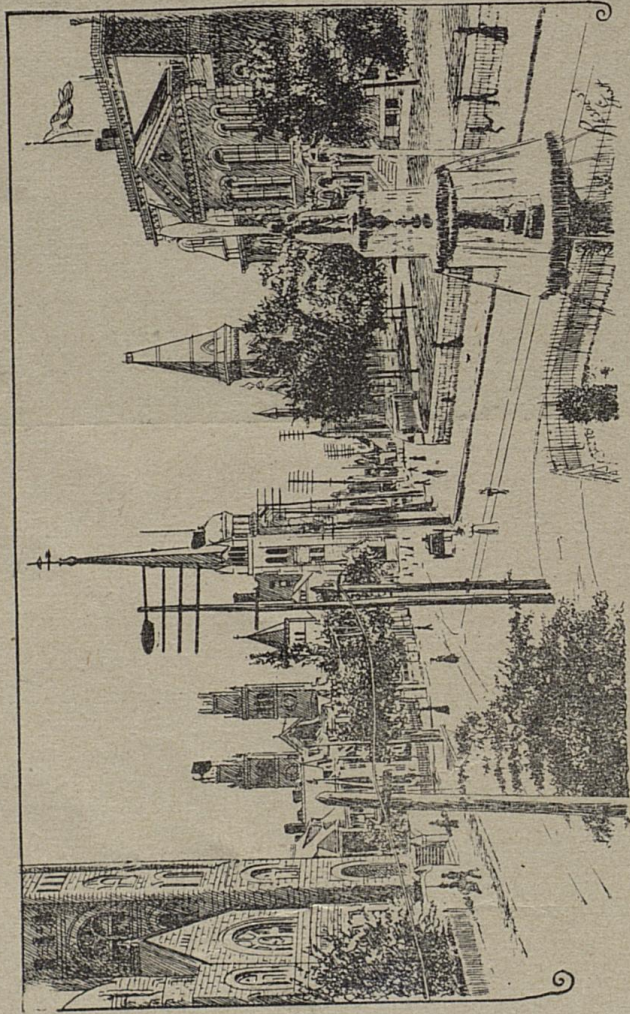
Fifth Ohio Infantry.



New York (Orchard Knobs)



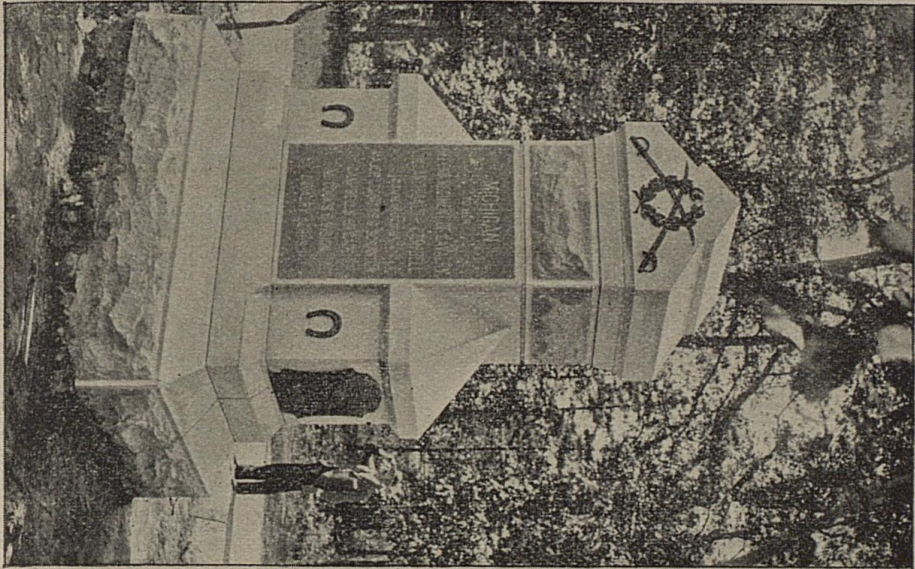
Ohio Infantry.



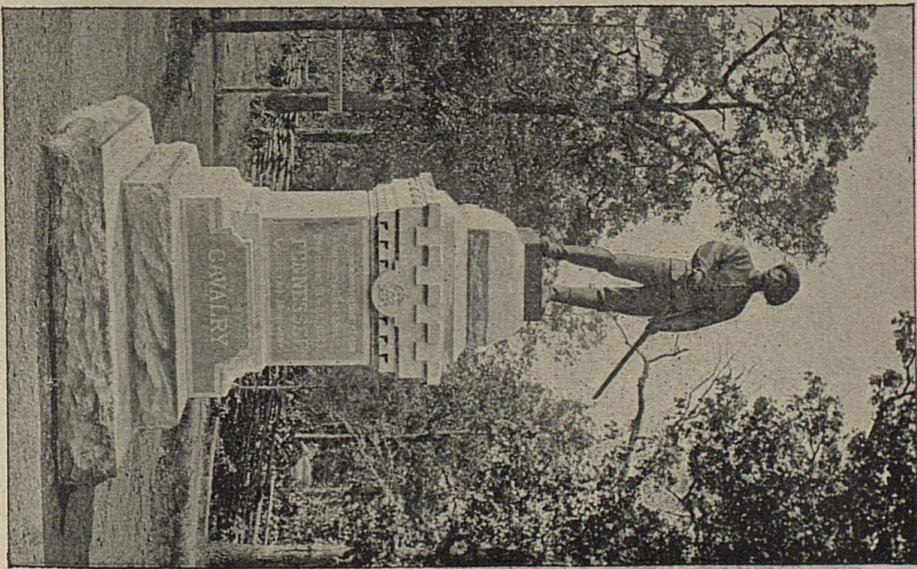
Fountain Square, Chattanooga,
Where the State College Battalion assisted in the dedication of the Spanish Cannon.

Michigan Cavalry.

Tennessee Cavalry.



Michigan Cavalry.

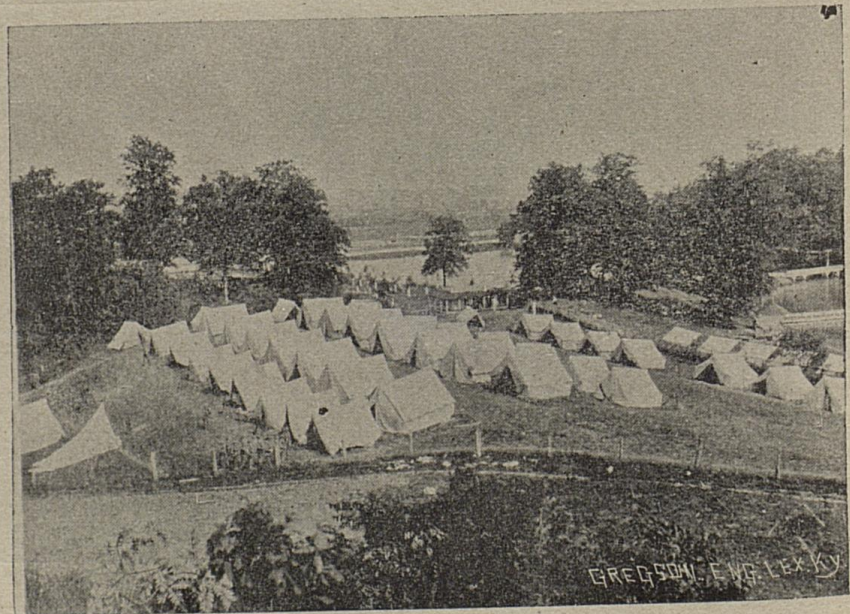


Tennessee Cavalry.

STATE COLLEGE CAMP, 1899.
Clyffeside Park, Ashland, Ky.



Commandant's Headquarters. (Major M. B. Jones.)



General View of Camp.
(Haunts of tender memories.)

Military Department.

Kentucky State College.

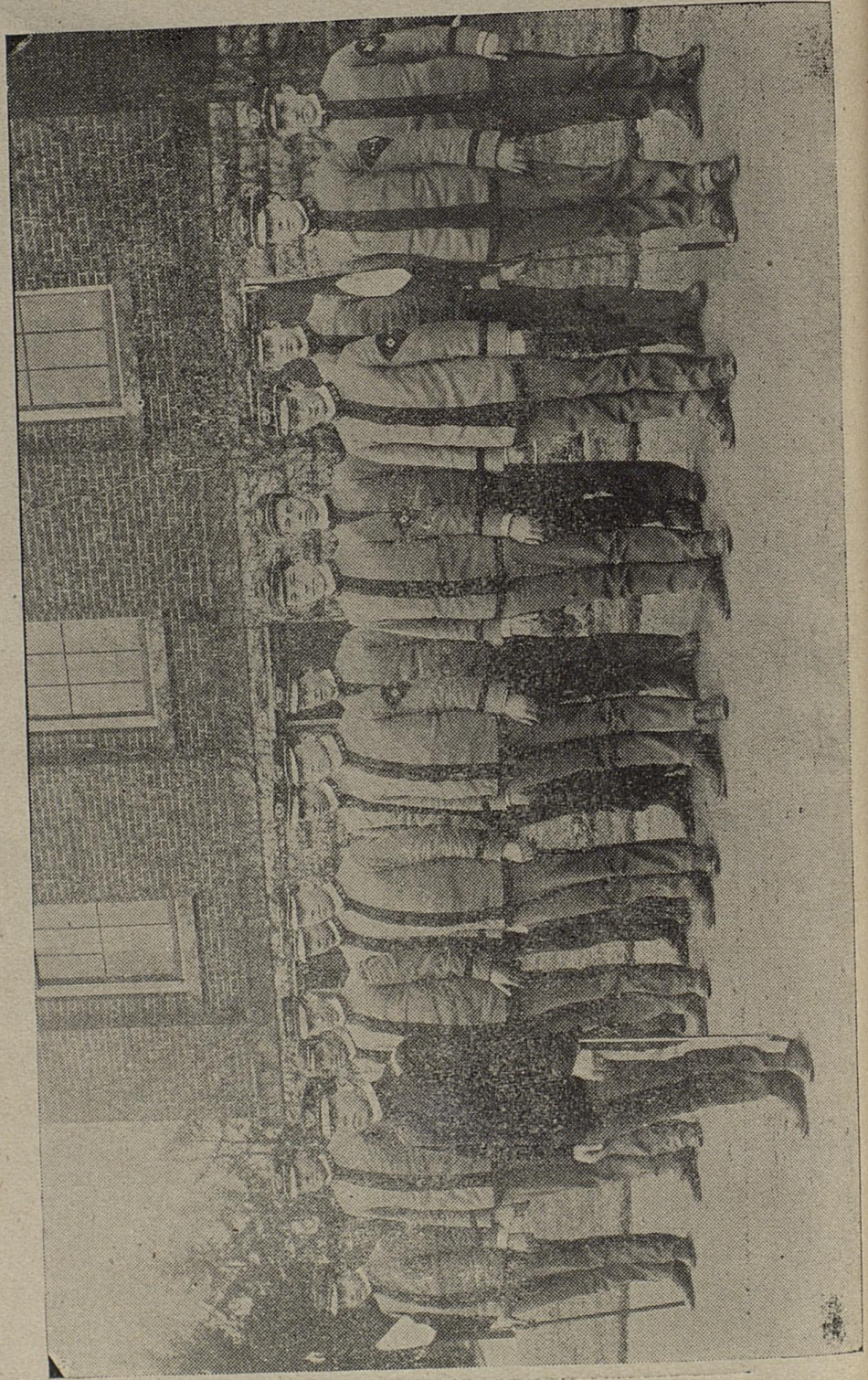
Lieut. W. C. Carpenter, Commandant.



Commandant and Commissioned Officers.

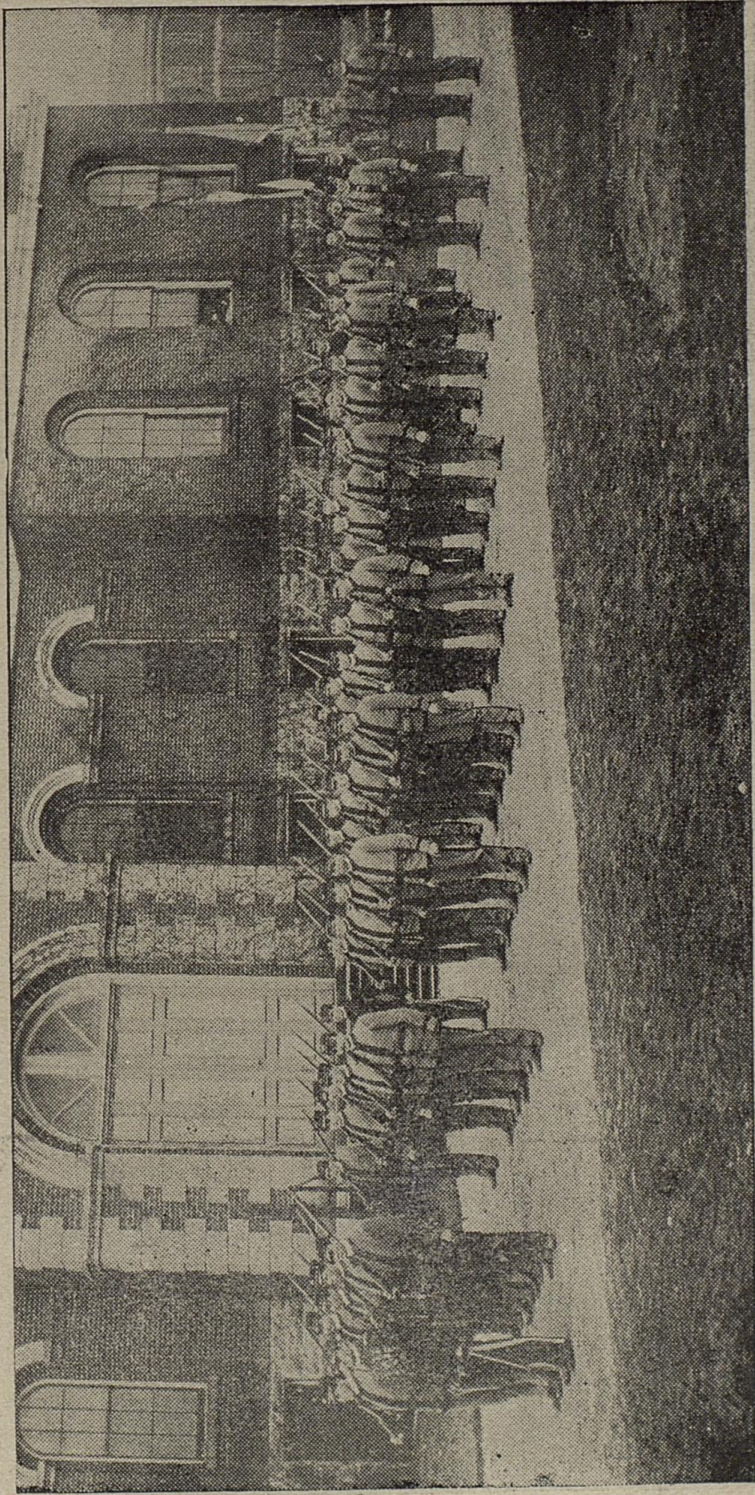


Battery. Capt. Lyle.

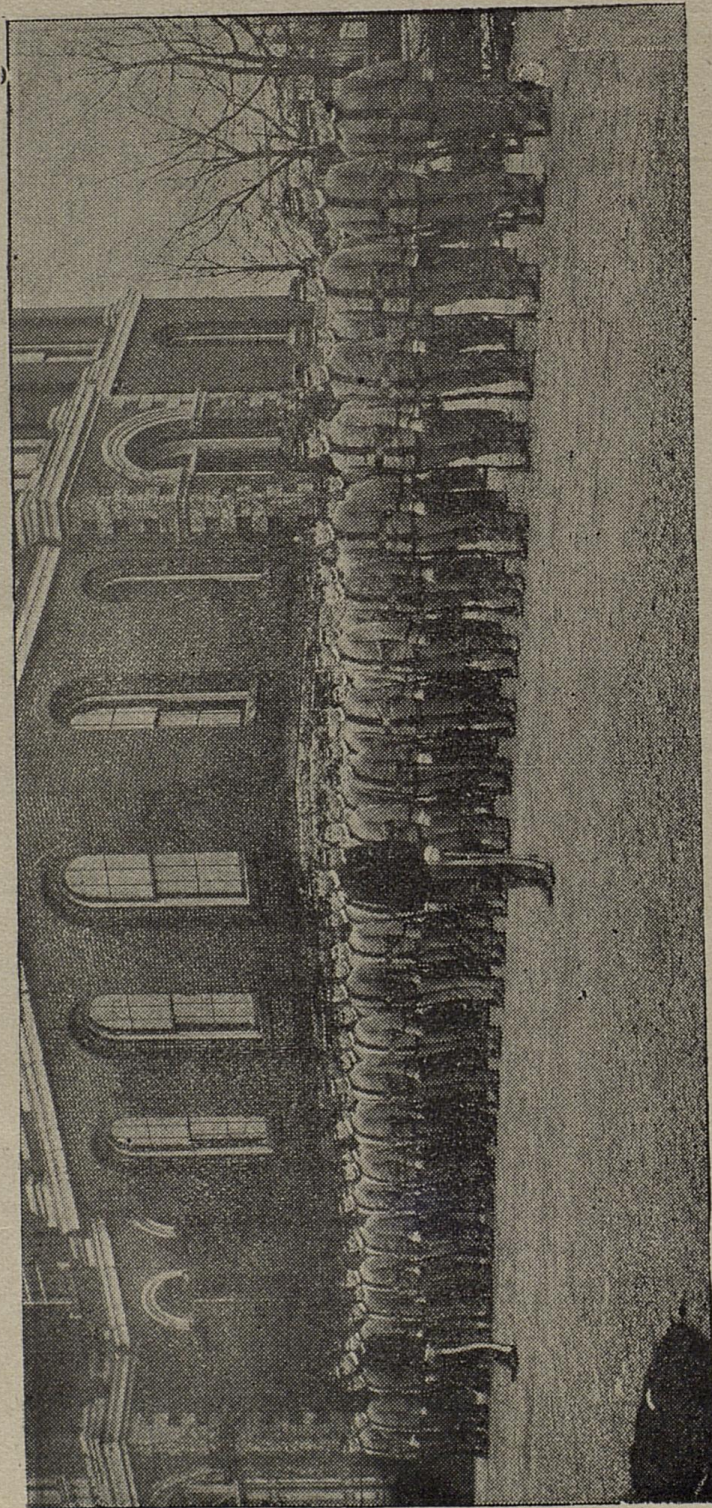


Signal Corps, Lieutenant Hundley.

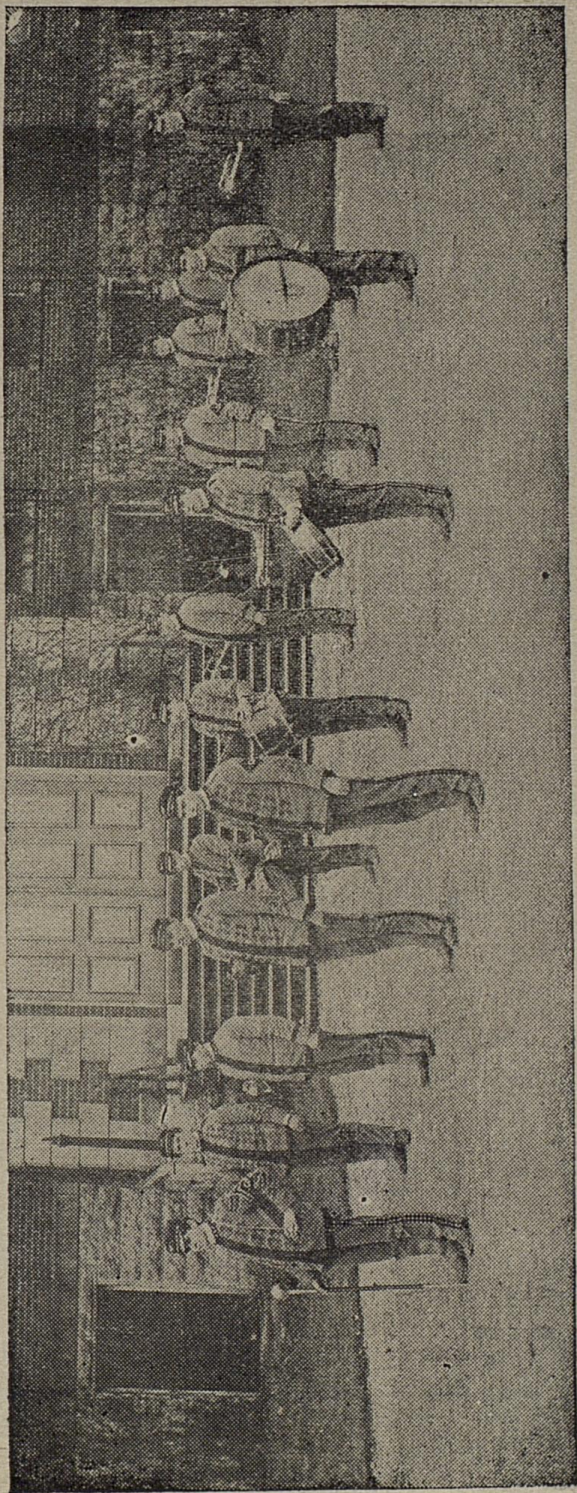
Signal Corps, Lieutenant Hundley.



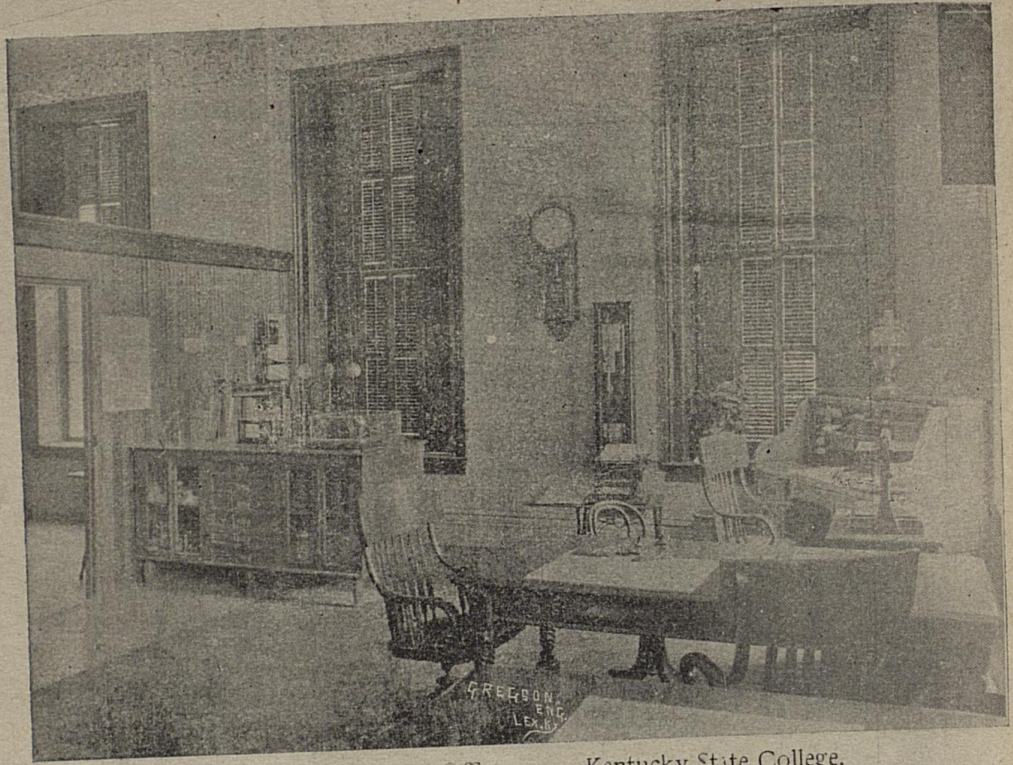
Company C, Captain Cornetti.



Company B., Captain Darling.

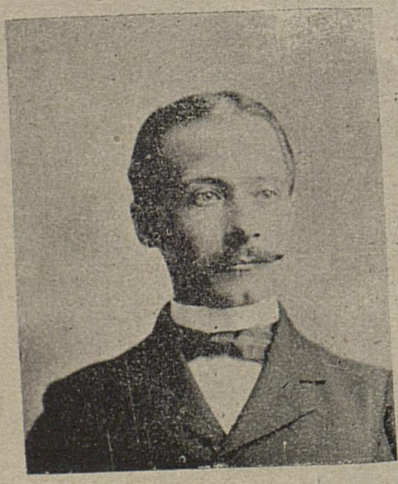


Drum Corps. Drum Major Wilson.

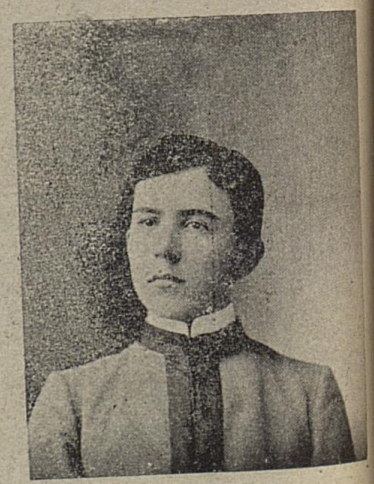


U. S. Weather Bureau Office.


Kentucky State College.



R. Q. Grant, Official in Charge.



W. E. Gary, Student Assistant



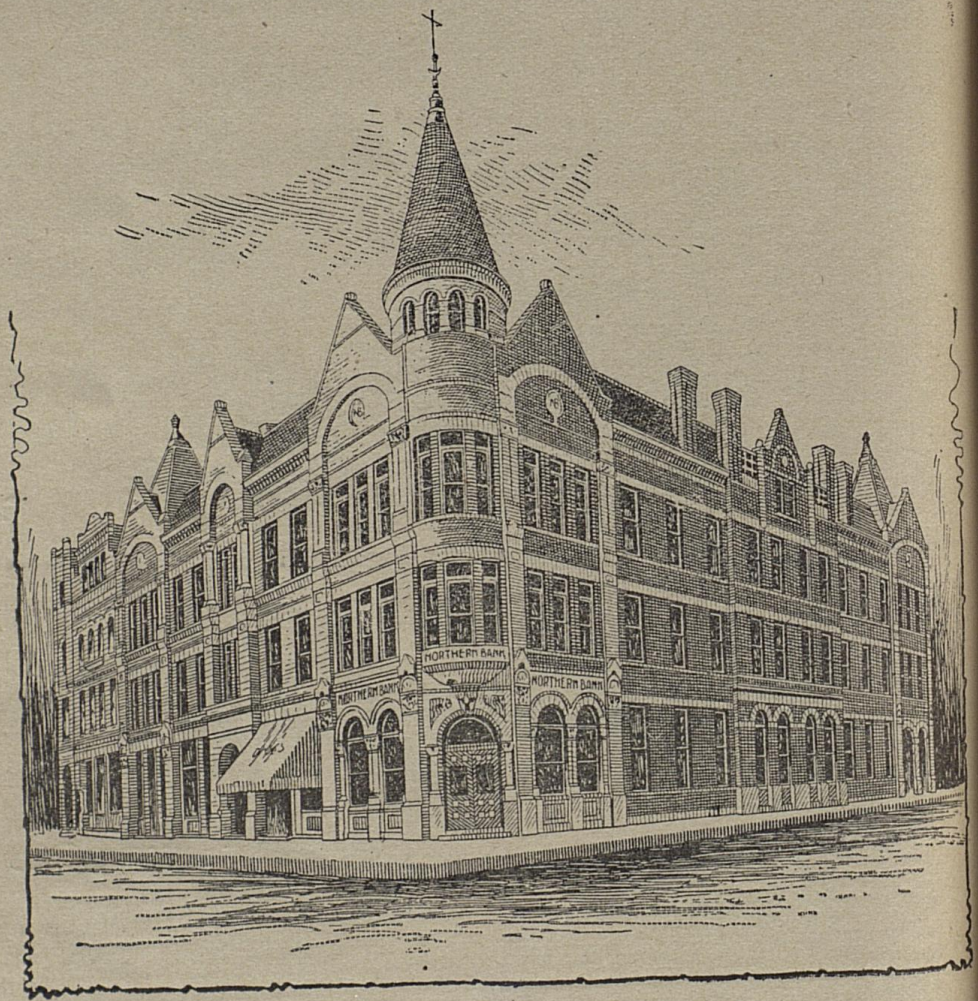
Department of

Phonography

in connection with

Kentucky State College





The School of Phonography.

M E Milliken, Principal.

Rooms 30-31-32, Northern Bank Building, Lexington, Ky.

It

A

W
warded
T
they le

O
board,
writers
Co

It Pays...

To get a Thorough Knowledge of

...Shorthand

A GOOD POSITION FOLLOWS.

We point with pride to our former pupils who are now rewarded with positions.

Thorough instruction and experience in practical work before they leave the school is the secret of their success.

Touch Typewriting.

Our pupils operate the typewriter without looking at the keyboard, and write with more ease, speed and accuracy than sight writers.

Come and examine our methods.

COMBS LUMBER COMPANY

Lumber Yard and

Planing Mill.

Contractors and Builders.

180 East Main. Telephone 139.

291 West High. Telephone 25.

LEXINGTON, KY.

JOS. McWILLIAMS & CO.,

MECHANICAL ENGINEERS AND CONTRACTORS,

323 W MAIN ST., LOUISVILLE, KY.

Steam and Water Heating and Ventilating Apparatus.

Steam Plants for Power, Light and Heat.

Exhaust Steam Used without Back Pressure.

Smokeless Fuel—Saving Furnaces.

Boilers, Engines, Pumps, Pipe, Valves and Fittings.

General Steam Engineering.

J. T. VANCE

Stoves, Ranges, Furnaces

Tinware and Kitchen Novelties,

20 West Main Street,

LEXINGTON, KY.

T. A. COOK,
President.

J. D. WALKER,
Vice-President.

H. M. SOUSLEY,
Secy. and Treas.

THE H. M. SOUSLEY CO.,

Incorporated.

Grocers and Fresh Meat Dealers.

3 STORES: Main and Broadway—Phone 370.
135 Jefferson Street—Phone 534.
Fourth and Limestone—Phone 445.

EVERY ROOM STEAM HEATED.

Leland Hotel and Annex.

J. M. SKAIN, Proprietor.

The Leland Hotel Farm LEXINGTON, KY.
Supplies the Hotel Daily.

Robertson & Weitzel

Drugs, Toilet Articles, Stationery,
Sundries.

Special Attention Given to Students.

Phone 123.

Corner Main and Limestone.

Our Motto: Fair Treatment to All.

Lexington Lumber and Manufacturing Co.

Incorporated.

MCCORMICK'S.

Our Yard is known as the "Old Reliable."

Our Stock is always the Fullest.

Largest Stock of Glass in the City.

East Main and C. and O. Ry. Crossing.

Lots of Our Friends

 in Kentucky

Purchase from us Supplies of Every
Description for

Railroads, Lumbermen, Quarries,
Saw-Mills, Machine Shops,
Foundries, Etc.

If you are not already on the list, now is the time.

QUEEN CITY SUPPLY COMPANY,

PUCHTA, PUND & CO.,

201, 203, 205 W. Pearl, Cincinnati.



Your Eyes...

Students, whatever you do, take care of your eyes.

People are realizing every day that a visit to a good Optician means honest advice, intelligent service and a saving of money. You cannot get a poor fit to glasses from us, because we don't do business that way. Here you may have your eyes

Tested Free

Think of learning the truth about your eyes free of cost. The plain simple truth. If your vision is correct, we congratulate you. Existing defects we correct at a satisfactory price. Come in for an eye talk when down town.

Eyes hurt you? Twitch, or smart or burn? Likely you need glasses—but it costs nothing to find out. Ours are guaranteed.

O. R. King...

Practical Optician, East Main St.



Walby & Slade...

Popular Priced Merchant Tailors

We carry the largest stock and greatest number of styles to select from in Kentucky.

The style you want the latest. The kind you want the best. The price the lowest consistent with satisfactory work. Call and be convinced.

69 East Main Street, Lexington, Ky.

MONEY TO LOAN IN ANY AMOUNTS.

Diamonds, Watches, Jewelry,

Guns, Pistols, Etc., Etc.

D. Adler & Son's Loan Office,

17 SOUTH UPPER STREET.

A large lot of the above unredeemed pledges for sale at less than one-half their value.
Highest cash price paid for old gold and silver.

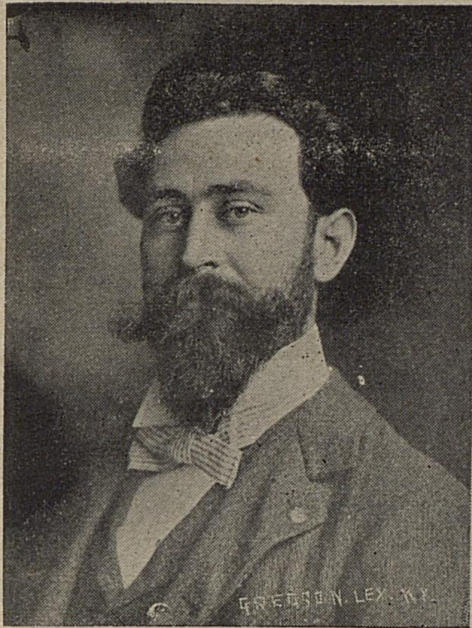
Lexington Steam Bakery

Wholesale and Retail Dealers in

Candy, Bread and Cakes,

Phone 613.

36, 38, 40 West Short Street.



Students...

*And all lovers of High
Grade Photos should visit*

Spengler's

**Photo and Art
Parlors,**


33-35 North Broadway.

Inducements to Students.

Rubber Tired Vehicles

...A SPECIALTY...

My vehicles are all new, stylish and up-to date, and you can get any style desired.

Picnic Wagon to Carry Fifty-five Persons. 

My prices are very low. I sell all styles of Columbus and Curtis & Reed Vehicles, and I will save you 25 per cent. Call and see.

B. B. WILSON, 31-35 North Mill.

CRUICKSHANK...

SHOEMAKER

Manufacturer of Fine Boots and Shoes. Repairing neatly executed. Special discount to students. 105 East Main street.

3 Daily Trains

FROM

LEXINGTON

TO

LOUISVILLE

VIA

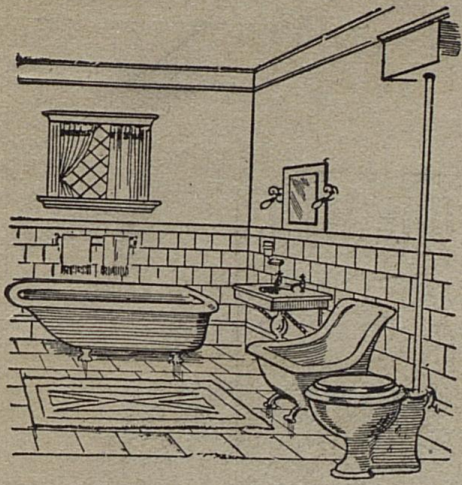
Southern Railway.

6887 Miles of Best Road. Through Eight Best
Southern States. The Southern is the
Leading Road.

S. T. Swift, City Passenger and Ticket Agent,
W. G. Morgan, Depot Ticket Agent,
Lexington, Ky.

J. M. Culp, Traffic Manager,
W. A. Turk, General Passenger Agent,
Washington, D. C.

W. H. Tayloe, A. G. P. A., Louisville, Ky.



Sanitary

Plumbing

Steam and

Hot Water

HEATING

McELHONE & MOLONEY,

Plumbers, Steam Fitters' and Machinists' Supplies,
Telephone 208. 19 Cheapside.

Foushee's Fine
Fashionable
Footwear.

High in Quality, but Low in Price.

Large Stock, all Leathers and Styles, Sporting Shoes, &c.
Ten per cent discount to students. Any student mentioning
this advertisement can get polish free. Remember the number,

54 EAST MAIN STREET.

Loevenhart's

SNAPPY SUITS. See our swell line advertised this week at \$10.

SWELL Stein-Bloch Suits \$13.50 to \$22.

Loafing Togs—Flannel Suits, Straw Hats, Negligee Shirts.

Light Weight Prices. Special Discount to Students.

Loevenhart's

Clothier, Hatter, Furnisher, 4 East Main.

Drink Soda Water with Headley Land
AT GLENN'S.

BUSINESS EDUCATION



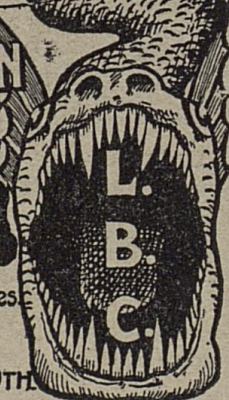
LEXINGTON BUSINESS COLLEGE

INCORPORATED.

B. B. JONES, Pres't.

E. G. SPINK, Vice-Pres't.

THE LEADING
PRACTICAL
SCHOOL OF THE SOUTH



Bookkeeping ♦ Shorthand ♦ Telegraphy

Courses graded. Short, Practical, Modern. Normal Course for Teachers. No vacation. Cheap Board, club or private.

Best Home Study Courses—Shorthand or Bookkeeping. Experienced Teachers. Individual Instruction. Three Departments.—All Commercial Branches. Enter Any Time. Open to Both Sexes. Elegant Diploma.

POSITIONS: Tuition may be deposited in bank until position is secured. 165 former pupils holding positions in Lexington alone. For "Kat-a-log" and full particulars, address

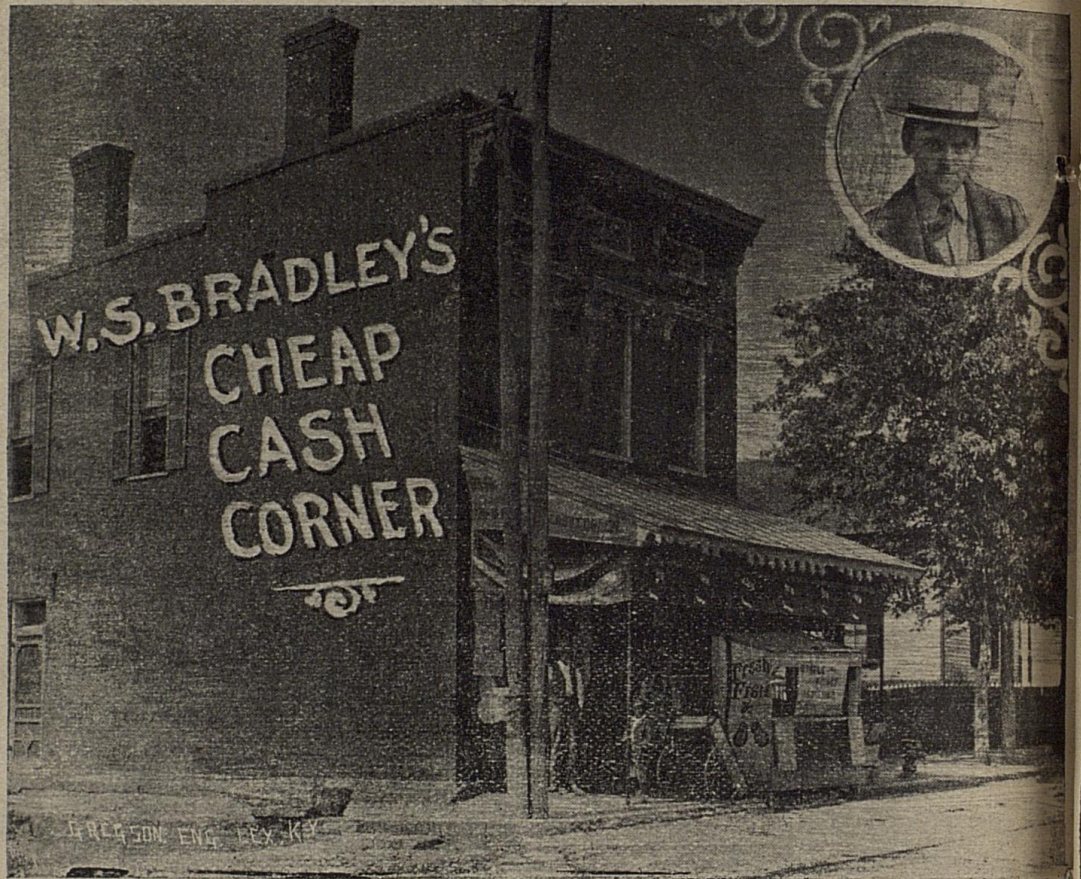
B. B. JONES, President,
LEXINGTON, KY.

For particulars concerning
HOME STUDY, address Dep't B.

N



LEXINGTON'S GREATEST CLOTHING HOUSE,
MILLER BROS.,
Corner Broadway and Main.



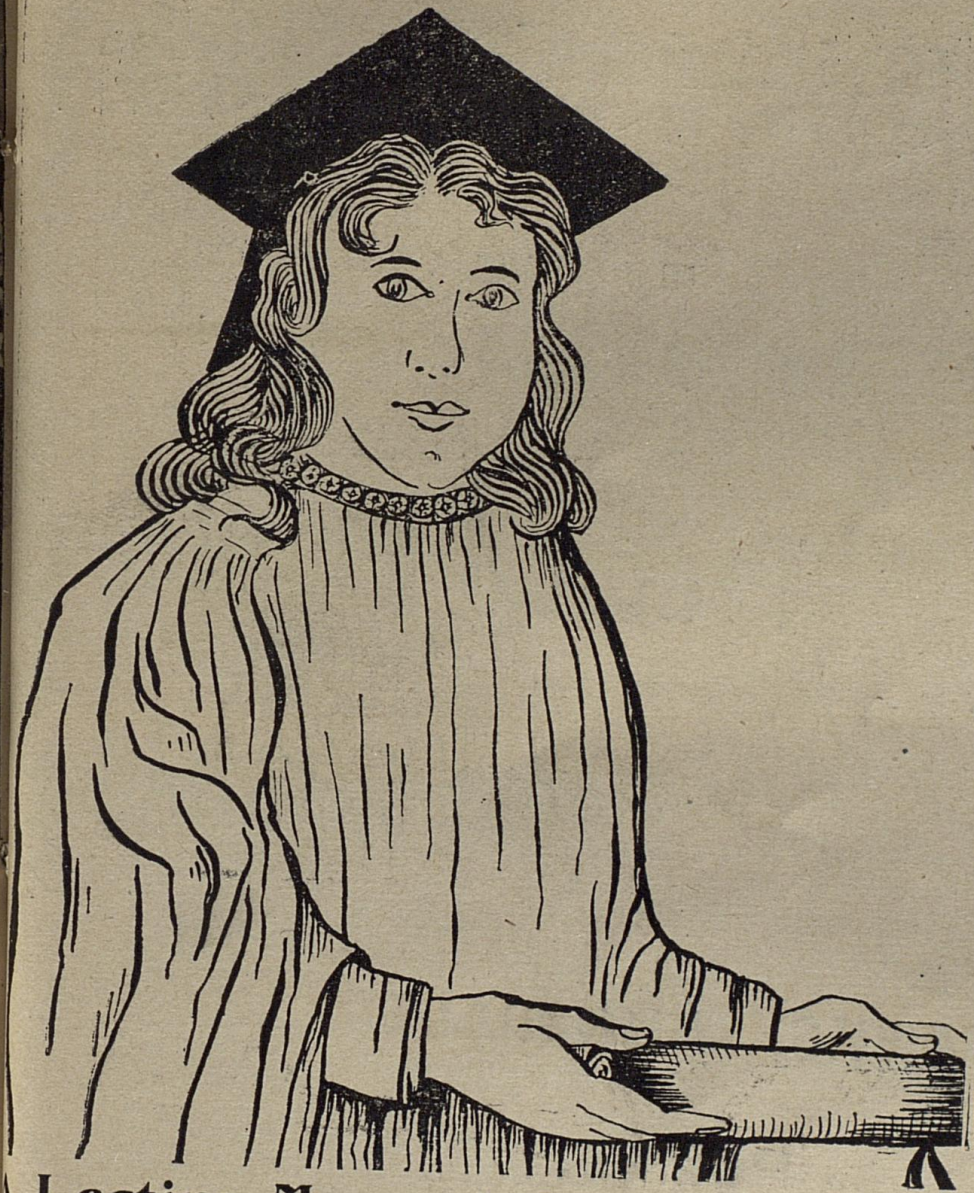
Billy's Corner,

Familiar to all College Boys, where they can buy

THE BEST

AT

LOWEST PRICES



A Lasting Memento For these notable events can be selected in articles made of the
Precious Metals. Our stock of

Commencement Presents

in Fine Articles of Gold and Silver

more complete than ever.

MODERATE PRICES.

FRED. J. HEINTZ,

Manufacturing Jeweler, 135 East Main, near Post-office.



E. P. JOHNSON,

Practical Plumbing,

Steam Heating.

TANKS, WINDMILLS,

PUMPS.

Patronage Solicited.

Telephone 500.

18 Market Street





THIS
PAGE
IS
RESERVED
FOR
THE
SOUTHERN BUSINESS COLLEGE,
LEXINGTON,
KENTUCKY.





VAUGHAN BROS.,

CORNER HIGH & BROADWAY.

The Leading Cash Grocers of the South Side.

SUCCESSORS TO S. K. COZINE.

THE BEST GOODS.

THE LOWEST PRICES.

A TREAT OF GOOD THINGS.

Kentucky Chatauqua Assembly,

Lexington, Ky., June 26 to July 6.

Entertainment, Recreation and Profit happily combined.

CHAS, SCOTT, Manager.

Trade with the
Central Clothing Store,

Manufacturers and Dealers in

MEN'S WEAR

30 E. MAIN STREET, OPP. COURT HOUSE.

L. KAHN, Manager.

Paying Investment.

Students, by calling at the

Star Clothing House

You can buy Clothing and Gents' Wear at 10 per cent discount.

GREEBLE & LANG, 34 E. Main St.

Once We Get in the Wedge...

The task is easy. If you give us a chance we will convince you that we can please you. We carry a complete line. Prescriptions a specialty. Main and Broadway. Phone 459.

...COOPER'S DRUG STORE.

MULLEN, The Leading Photographer.

5 West Main Street.

Send Your Linen to Lexington Steam Laundry

For First-class Work. Represented by

A. S. DABNEY, Room 17 Old Dormitory.

PHOTOGRAPHS.

You will get the Best Pictures
Best Attention and the
Lowest Prices at

SINGLETON'S GALLERY

55 East Main Street.

C. D. CUNNINGHAM,

Paints, Oils, Glass, Brushes.

House Painter and Decorator.

21 West Short Street.

ASK YOUR
GROCER FOR

CREAM FLOUR.

IT IS THE
BEST.

Made by Lexington Roller Mills Company,
JOS. LECOMPTE, Manager.



A Man of Correct Taste

In dress brings his fine linen to us to be renovated, because we handle it with care, and give it the proper finish and color, so that when he attends the theatre, an evening reception, ball or dinner party it looks like new. Our laundry work is perfect, and our prices are cheering to those who don clean linen five or six times a week.

Ky. Steam Laundry,

W. N. Cropper, Prop.,

Phone 210

13-15 South Upper St.

FOR
ICE CREAM, SODA
AND FINE CANDIES

WE ARE HEADQUARTERS.

MCGURK & SPEARS,

**Glen Mary
Barren Fork Coal**

Quality always the Same.
Quantity always Guaranteed.

SHELBY KINKEAD & BRO.,

Sole Agents,
51 North Broadway.
S. Bdwy. and C. S. Ry.

JOHN M. GREENWAY,
Bookseller, Stationer and Druggist,

26 East Main St., Lexington, Ky.

Keeps ALL text-books used in A. and M. College. Invites students to make his store a stopping place when in the city.

Commencement Presents

Now is the time

to Buy.

We can please you in quality and price. We carry a complete line of Fine Gold Watches, Diamond Rings, Pearl Brooches. Gold and Silver Novelties of all Descriptions.

Victor Bogaert,

JEWELER.

57 East Main Street.



Largest Paint House

IN THE CITY.

Estimates furnished on all
classes of Work.

Poer & Bean,

Contractors and Wholesale and Retail
Dealers in

Paints, Oils, Varnishes,
Brushes, Art and Window Glass.

COR. LIMESTONE AND SHORT.

Phone 535.

Shaving 10c. Hair Cutting, 25c.

D. RODNEY MESSICK,

BARBER

Clean Towels. Polite Treatment.

11 N. Limestone St., Lexington, Ky.

For

Delicious Drinks,

Fine Candies, Fruits,

Cigars, Etc.

GO
TO **FUGAZZI'S,**

Opp. Phoenix Hotel.

Blue Grass
Cycle Co.

THOS. B. DEWHURST.

Sporting Goods, Bicycles, Sundries
and Repairs, Fishing Tackle,

Nickle and Silver Plating

LEXINGTON, KY.

Dr. S. A. Donaldson

DENTIST,

Office and Residence,

73 North Limestone Street,

LEXINGTON, KY.

ELITE STATIONERY CO.,

48 EAST MAIN STREET,
LEXINGTON, KY.

Engraved Cards and Invitations,
Stationery, Blank Books,

JOB PRINTING.

OFFICE SUPPLIES.

Ten per cent. off on all Books.

Special Attention given to Students.

C. & O.

ROUTE.

SHORTEST LINE TO

LOUISVILLE,

ST. LOUIS,

CHICAGO.

AND ALL POINTS WEST.

Ticket Office, Phoenix Hotel.

**KHAKIE
FOR
SPRING.**

A cool, serviceable
and Economical Uni-
form for Spring and
Summer.

Price \$5.50.

WHITE DUCK TROUS'RS
should be ordered soon.



Send at once for Circular No. 242.
The Pettibone Bros. Mfg Co.,
Cincinnati, O., U. S. A.

**A. McMichael,
Penman
and Designer,**
107 South Mill Street,
LEXINGTON, KY.

Resolutions, Memorials and Testimonials
Engrossed. Designing and Illustrating. Cards
written in imitation of Steel Engraving.

Artistic Work at reasonable prices. Sketches
and estimates cheerfully furnished.

Lexington Steam Bakery,

Wholesale and Retail Dealers in

Candy, Bread and Cakes,

Nos. 36, 38 & 40 West Short Street.

PHONE 613.

Kaufman Clothing Co.

8 & 10 WEST MAIN STREET.

The Biggest and Best Clothing Store in Kentucky.

IMMENSE STOCK.

REASONABLE PRICES.

We represent the best tailors in the Country.

A FIRST CLASS

Lunch Counter,

And a First Class Restaurant is
what you will find by going to

"THE ROYAL,"

**NO. 11 SOUTH LIMESTONE STREET,
BET. MAIN AND WATER STS.
LEXINGTON, KY.**

**GOOD SERVICES AND REASONABLE PRICES IS
OUR MOTTO.**

JAMES KEARNS & CO.

Best Work. Prompt Attention. Low Prices.

J. L. Richardson & Co.,

FINE

ART PRINTING.

MANUFACTURERS OF

RUBBER STAMPS,

37 W Short St - Lexington, Ky

L. & G. STRAUS.

LEADING

*Clothiers and
Fine Tailors*

Lexington, Ky.

We carry the largest and best line of Men's Suits, Overcoats, Hats, Pants, Gloves, Underwear, Shirts, Neckwear, Collars and Cuffs and all

Goods for Men's Wear

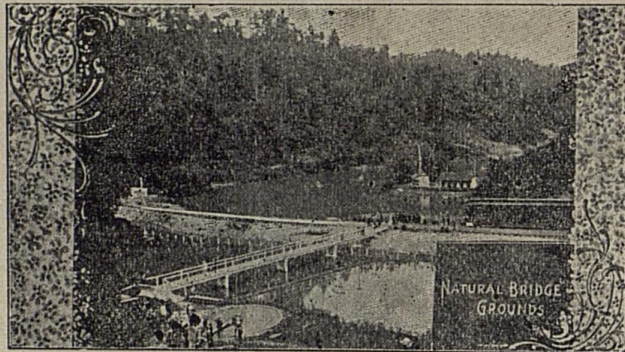
We sell the following brands of Shirts, the best on the market: Hutchinson, Pierce & Co. "Star"; Cluett, Peabody & Co., "Monarch"; Crum & Rushmore, "Montauk"; United Shirt & Collar Co.. "Lion Brand."

Come in and see us. Special discount to State College students.

**Louis & Gus Straus,
Leading Clothiers and Fine Tailors,**

Lexington.

..NATURAL BRIDGE..



Located on the Lexington and Eastern Railway, 57 miles from Lexington, Ky. Unexcelled as

Picnic and Camp Grounds

Many improvements have been made for the coming season. Special attention has been paid to the wants of parties wishing to camp.

Tents, platforms, dining room, kitchen and all requirements have been provided for Boating, Bathing, Fishing and Mountain Rambling & more.

On the line of the Lexington and Eastern can be found delightful

SUMMER RESORTS.

Torrent,

"L. Park Hotel, delightfully cool, free from cares of city life, and an absolute cure for hay fever

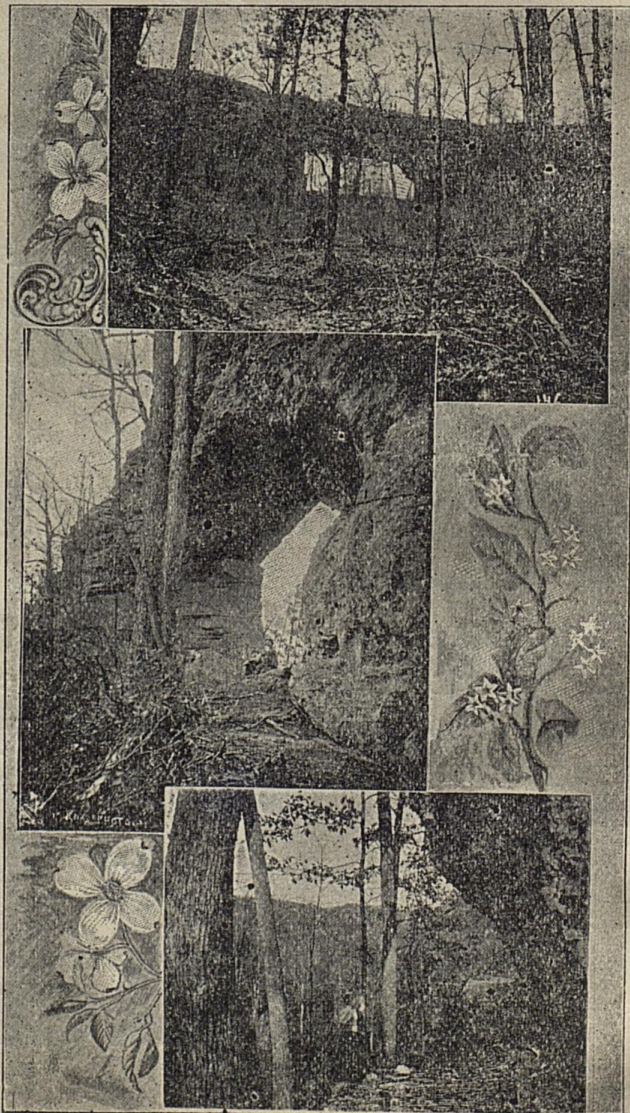
Jackson,

the terminus of the road, has the Arlington and the Riverside hotels. Tables supplied with the best of the market. Fresh vegetables from the gardens daily. Ample amusements can be found here in boating, bathing, fishing and riding.

Train Service

arranged so as to give parties ample time at Natural Bridge. Low rates to outing parties. Special trains furnished on reasonable terms

For further information apply to



T. R. MORGAN, S. P. A.

CHAS. SCOTT, G. P. A.



Pleasures...

a Plenty

AT

L Park Hotel

TORRENT, KY.

On the L. and E. Ry ,
62 miles from Lexington,
and in close proximity to
Natural Bridge.

AMUSEMENTS.

Dancing, Rambling, Horseback Riding,
Bowling, Picnics at the Bridge, where is
Boating, Fishing, Bathing.

TABLE.

Experienced Chef, Excellent Service,
All the Delicacies of the Season,
Plenty to Eat.

TRAINS.

Two each way daily. Two daily mails each way, Express
Telegraph, Laundry, Soda Fountain, Club Rooms, Barber.

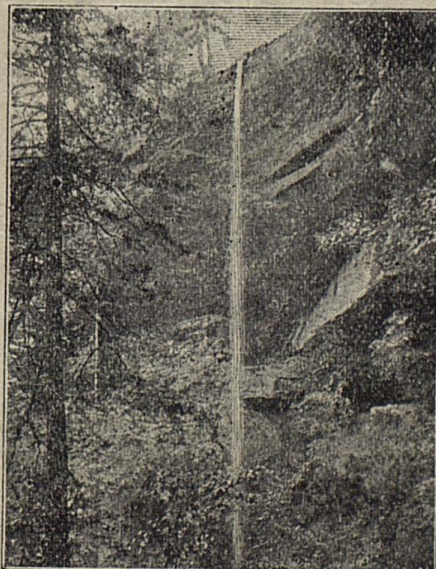
WATER.

Chalybeate Springs, Celebrated
Swango Water. Noted doctors
in attendance.

TERMS.

To Adults, one week, \$10.
Children under 8, half price.
Servants according to accommo-
dations.
Special rates to parties.
Address

E. M. HOLMES,
Manager.



We are in the Field
For Your Patronage.

**Fine Tailoring,
Kanan Shoes,
Manhattan Shirts
Knox Hats.**

The Best Line of Ready-Made Clothing on the Mar-
ket. Everything in the Clothing Line at
Reduced Prices.

We want your trade and you want to take advant-
age of our High Qualities at Low Prices.

Graves, Cox & Co.

