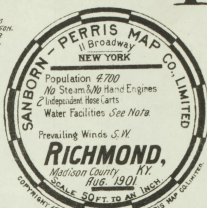


NOTE.

Water facilities: STAIN PIPE & DIRECT PRESS
STAIN PIPE: QUARTER & SEVENTH MILELON ONE
CON. QUARTER & MILES E. OF COURT NO.
2 SEVENTH AND MILES FROM COURT NO. 100
CON. 3 MILELON ONE PER ON QUARTER ON MILES
OF MILES "8" OF "7" AND PRESSURE 25 LBS

Fire Dept: VOLUNTEER, CHIEF, IS MEN & HORSES
DRIVE HORSES ONE HORSE SHIPWRECK FROM
LAND. 3 WHEEL HOSE REEL, ONE HORSE LADDER
TRUCK (ONE 25 HORSE HORSE HOSE PLUMB BELL
ON TRUCKLE. IN REAR OF HOSE NO.
FIREHOSE STREETS: WATER

12 SHEETS
53 1/2



KEY

- FIRE WALL OR ON POLE
- METAL CORNER
- STEEL WALL OR ON POLE
- FIRE WALL OR ON POLE
- FRAME PARTITION
- DRYING RHYME BOOK
- " (IN "STANDARD")
- WINDOWS & IRON SHUTTERS
- WINDOWS (FR. REV.)
- " (FR. REV.)
- " (FR. REV.)
- " (FR. REV.)

INDICATE RELATIVE HEIGHTS.
FIRE EXTINGUISHERS SHOWN AS MAP
ALTERNATE STREET NUMBERS ARE ACTUAL
CONSECUTIVE STREET NUMBERS ARE SHOWN

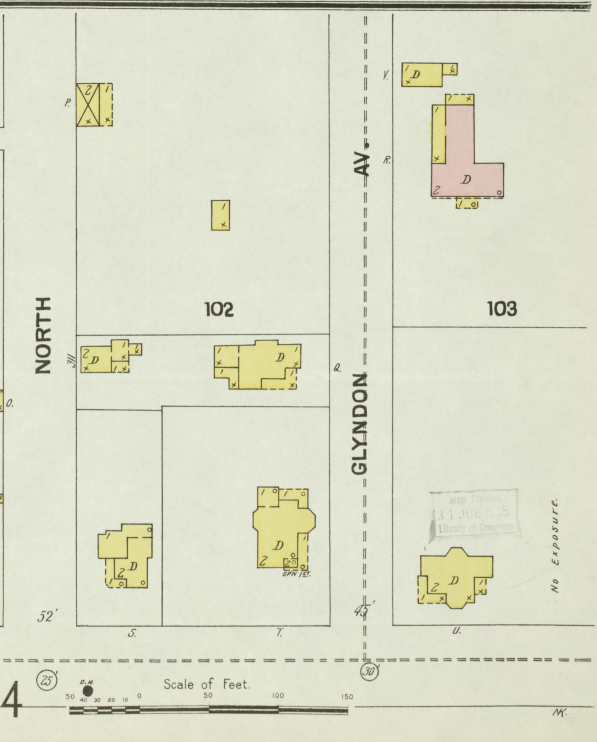
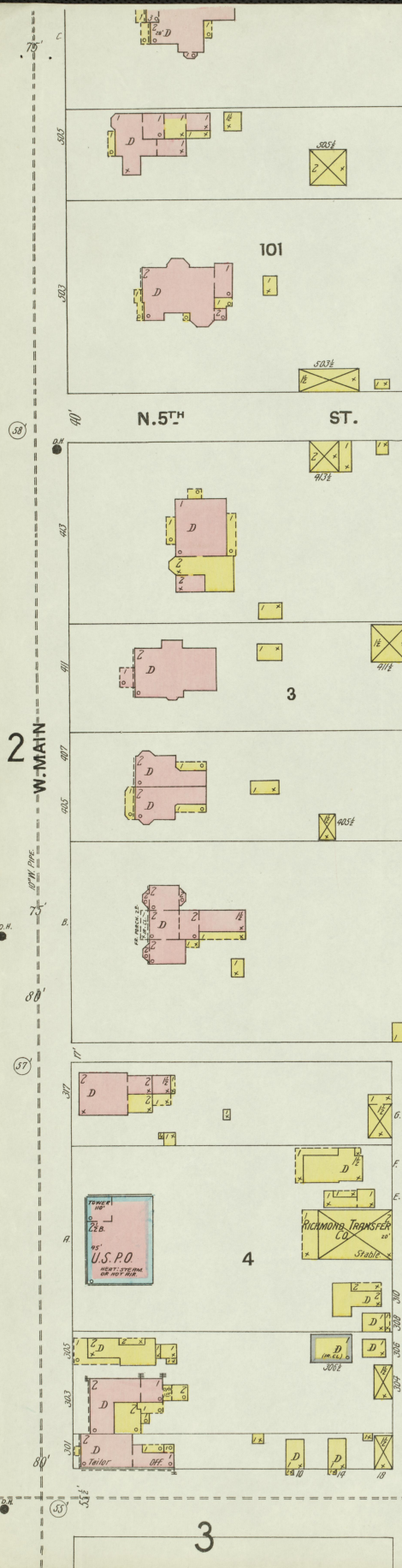
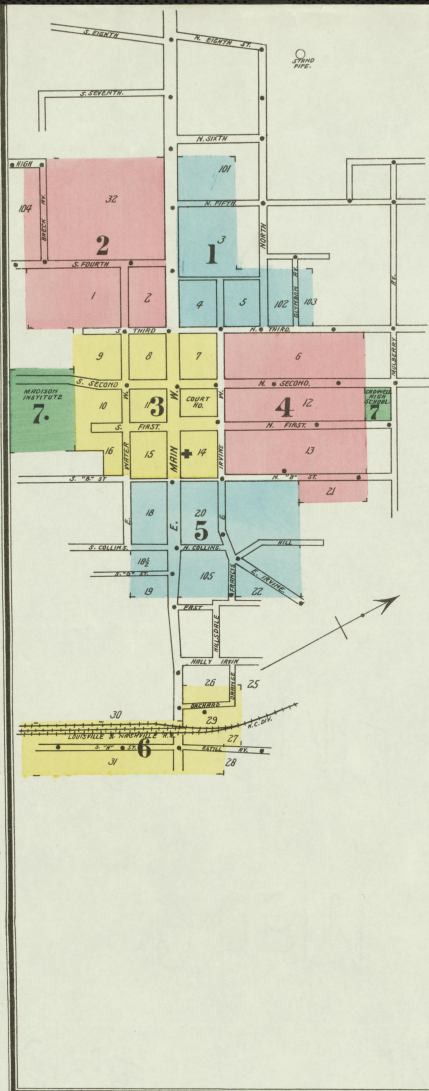
INDEX.

For "BEREA" see Sheet 12.

STREETS.	
B Street, N.	1-215 4/5
" " "	100-216 4/5
" " S.	317-324 4
Breck Ave.	400-511 2
Centre Ave.	12
Chestnut Ave.	12
College.	12
Collins, N.	1-21 5
D Street, S.	1-24 5
Estill Ave.	1-48 6
Fifth, N.	1-20 1
" " "	1-28 3
" " S.	100-233 4
" " "	1-120 3
Fourth, S.	1-208 2
Francis.	400-421 5
Glyndon Ave.	1
H Street, S.	1-208 6
Hill.	100-125 5
Irvine, E.	100-124 4/5
" " "	101-153 4/5
" " S.	200-421 5
" " "	100-224 4/5
" " "	101-225 4/4
" " "	300-325 1
Main, E.	100-125 3
" " "	200-425 5
" " "	607-510

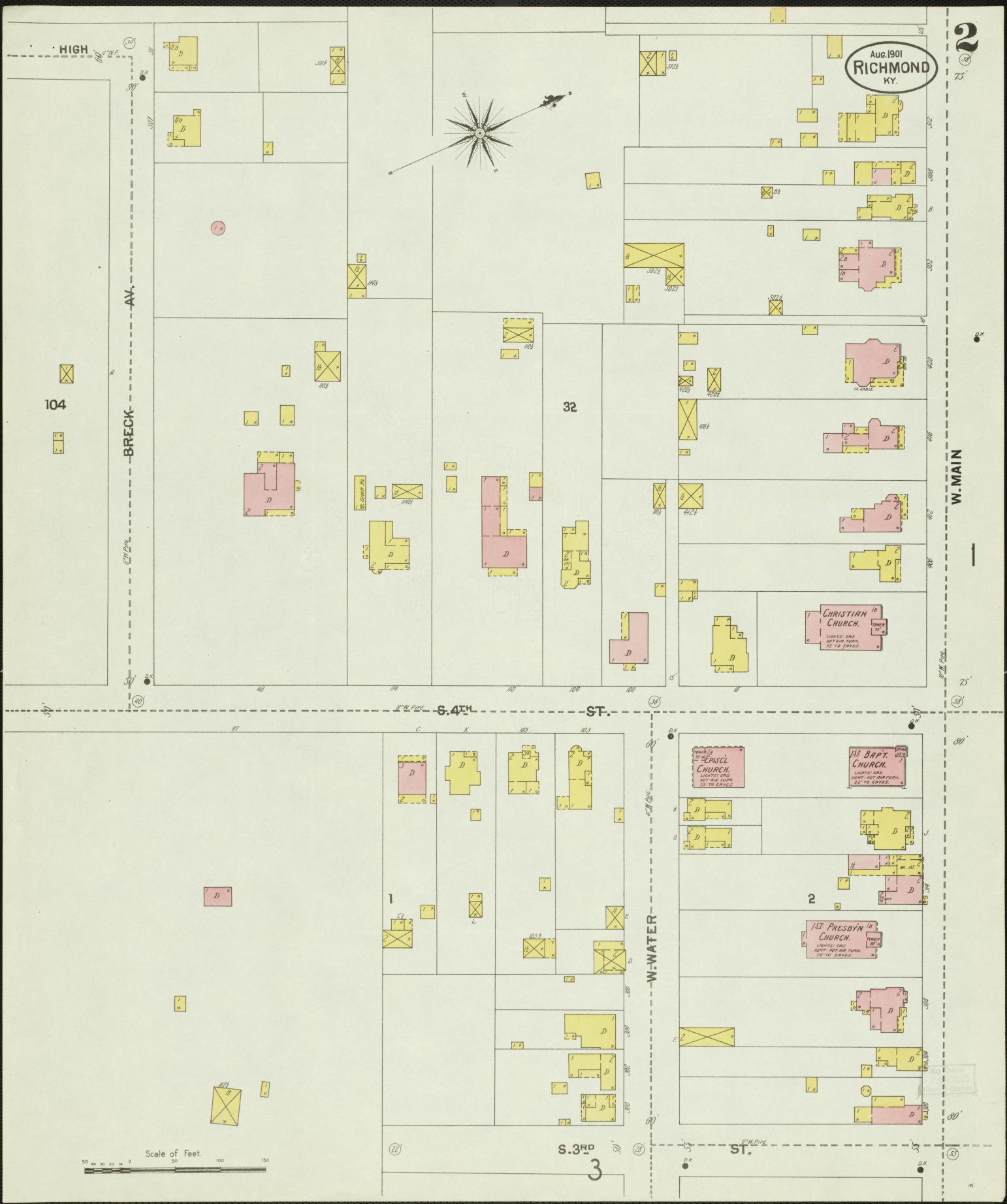
SPECIALS.	
Baptist Church, Colored.	5
Berea College.	12
Brenner, J., Brewing Co.'s Depot.	6
Berman, Beomet & Co., Distillery.	8
Burt & Brabb Lumber Co.,	9 & 10
Cadwell High School.	7
Central University.	7
Christian Church.	10
City Hall.	402 W. Main.
Colored.	5
County Court House and Jail.	3
Episcopal Church.	5
Episcopal Church.	5
Fehs, E., Brewing Co.'s Depot.	6
First Baptist Church.	11
Presbyterian Church.	2
Ford Lumber and Milling Co.	11
Hotel Glyndon.	3
Home Coverage Co.	6
Hume, W. S., & Co. Distillery.	8
Kentucky Carriage works.	3
Planing-mill.	5
Lexington Ice Company.	6
L. & N. R. R. Fr. Dep. & Eng.-ho.	6
Madison Institute.	7
Methodist Church, Colored.	5
Episcopal Church.	4
Midkiff, S. L., Carriage Shop.	4
Myers, D. H., Grist and Planing mill and Sawmill.	5
Richmond Hotel.	6
Ice Co.	6
Steam Laundry.	6
Water and Light Co. Gas works.	3
Roberts House.	4
School, Colored.	5
Second Presbyterian Church.	3
Silver Creek, Distillery.	8
Standard Oil Co.	6
United Baptist Church, Colored.	5
U. S. Post Office.	1
Warwick Distillery.	8
Zaring, J. W., Grain and Mill Co.	5

Indicates only one side of street shown.



Scale of Feet. 0 50 100 150

Aug. 1901
RICHMOND
KY.



104

32

3

BRECK

W. MAIN

S. 4TH ST.

W. WATER

S. 3RD ST.

CITY PLANS

Scale of Feet.
0 50 100 150

CHRISTIAN CHURCH.
LIGHTS ONE
NOT FOR PARK
25' TO EAVES.

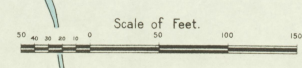
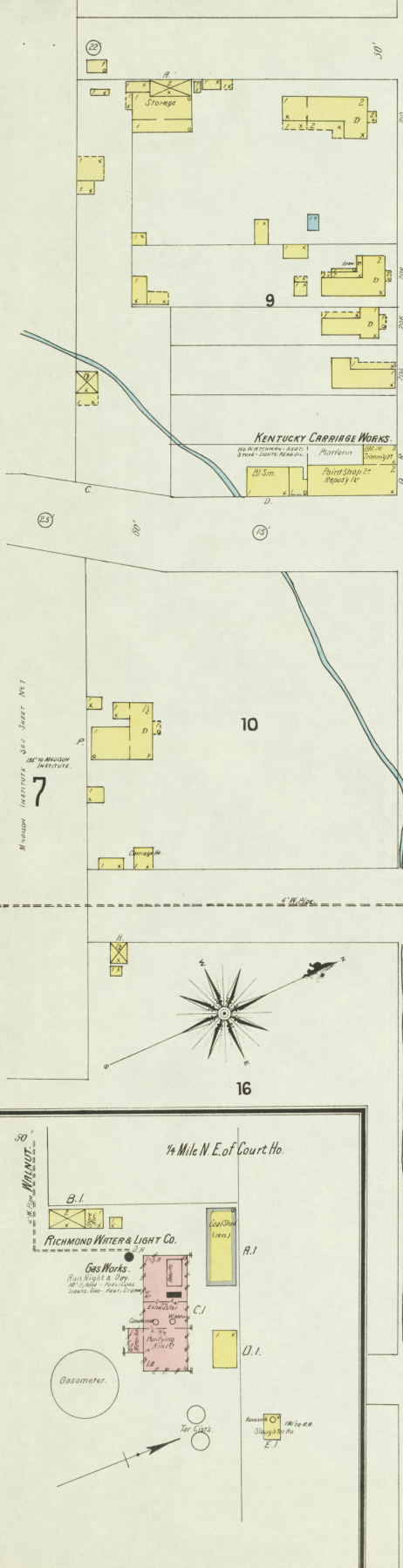
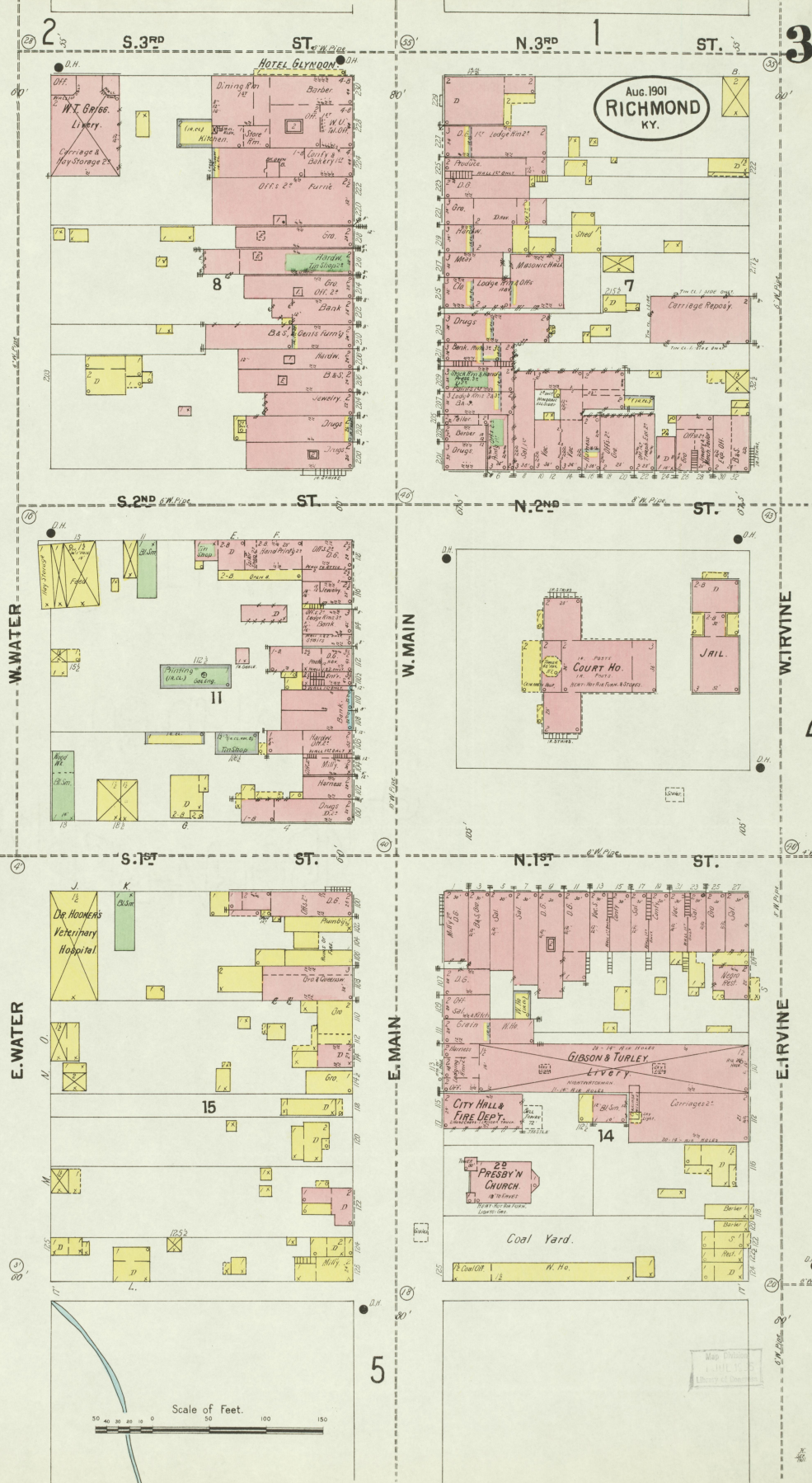
ST. BAPT. CHURCH.
LIGHTS ONE
NOT FOR PARK
25' TO EAVES.

ST. BAPT. CHURCH.
LIGHTS ONE
NOT FOR PARK
25' TO EAVES.

ST. PRESBYT. CHURCH.
LIGHTS ONE
NOT FOR PARK
25' TO EAVES.

CITY PLANS

Aug. 1901
RICHMOND
KY.



Aug. 1901
RICHMOND
KY.

4

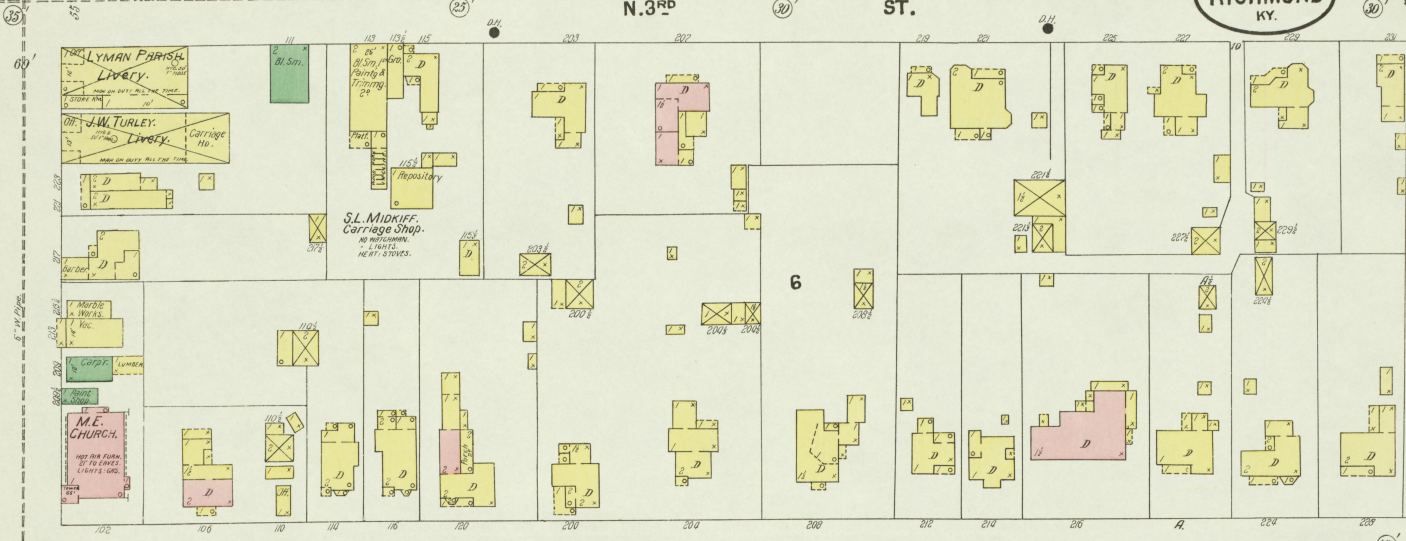
NORTH ST.

GLYNDOEN ST.

N. 3RD

ST.

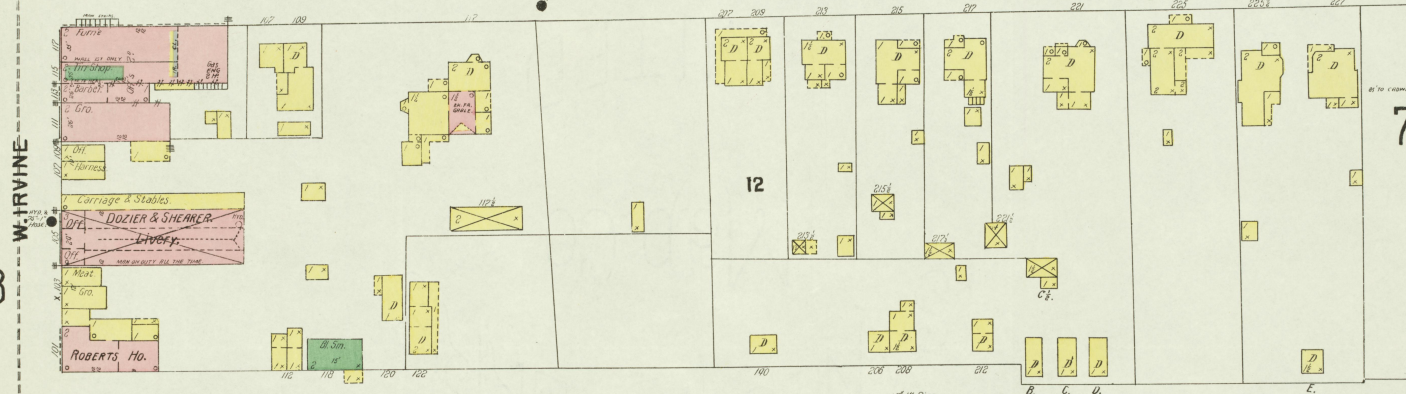
No Exposure.



N. 2ND

ST.

No Exposure.



N. 1ST

ST.

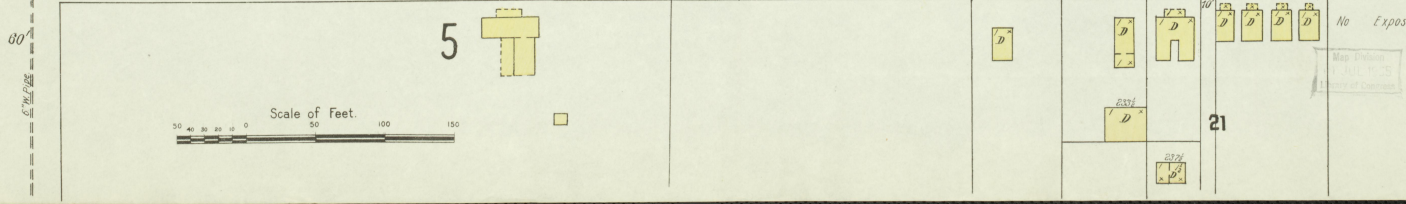
No Exposure.



NORTH B

ST.

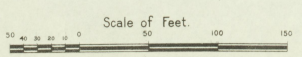
No Exposure.



NORTH C

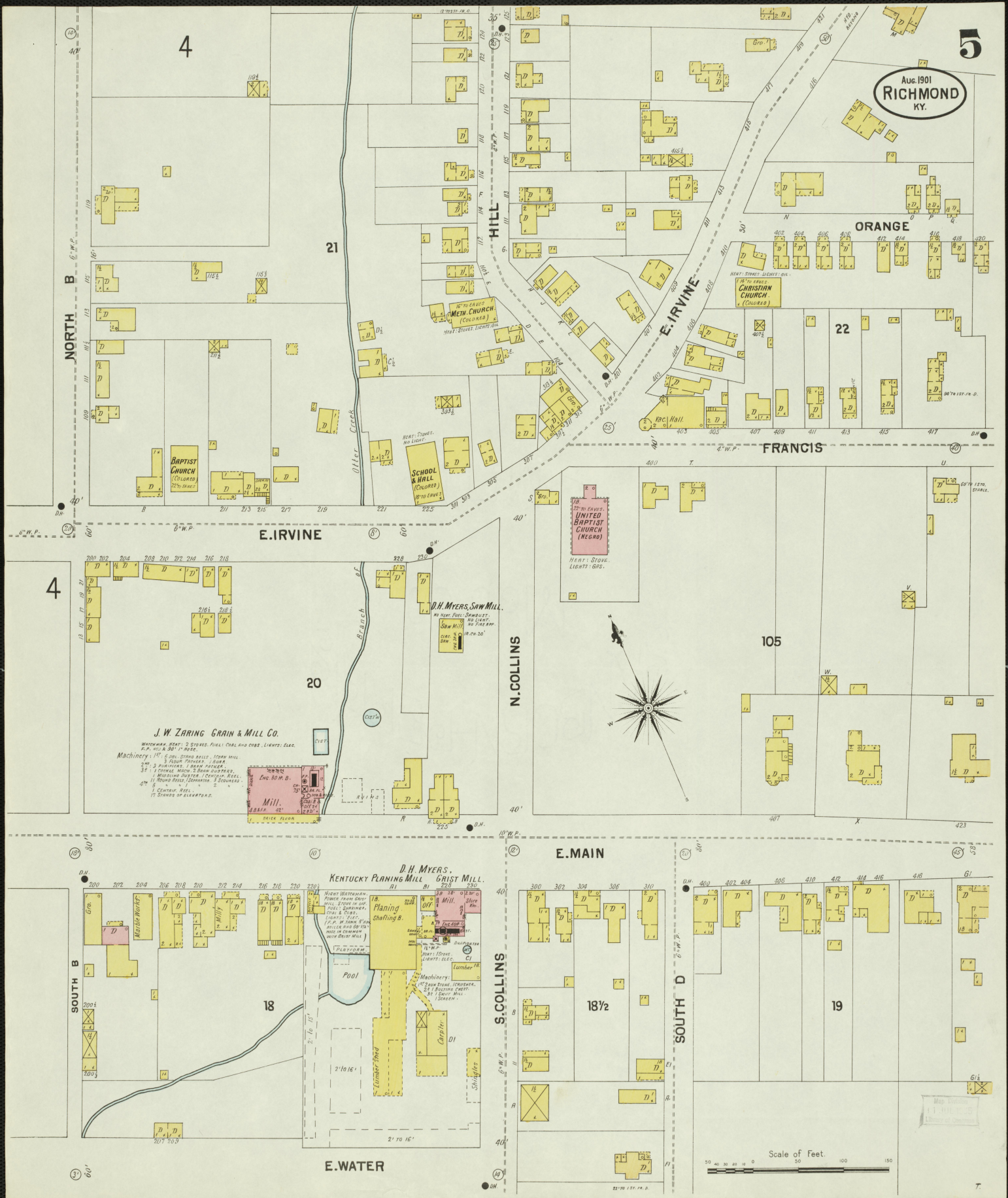
ST.

No Exposure.



Map of Richmond, Ky., 1901
Copyright 1901 by
The City of Richmond

Aug. 1901
RICHMOND
 KY.



BAPTIST CHURCH (COLORED)
 HEAT: STOVES. LIGHTS: GAS.

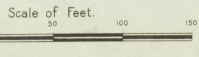
SCHOOL HALL (COLORED)
 HEAT: STOVES. NO LIGHT.

CHRISTIAN CHURCH (COLORED)
 HEAT: STOVES. LIGHTS: GAS.

UNITED BAPTIST CHURCH (NEGRO)
 HEAT: STOVES. LIGHTS: GAS.

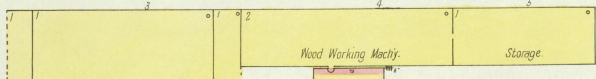
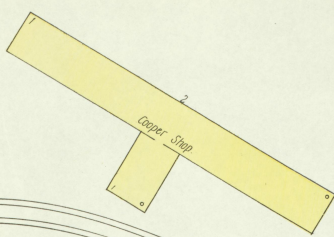
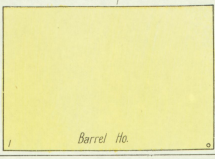
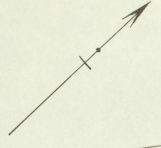
J. W. ZARING GRAIN & MILL CO.
 WATERPOWER BEAT: 2 STOVES. FULLY OIL AND GAS. LIGHTS: GAS.
 P. P. HOSE & 8" P. P. HOSE.
 Machinery: 12' 6" DIA. STEEL ROLL. 10000 MILL.
 3 BLOW PIPES. 30000.
 2 POUNDING & BEAN POUNDERS.
 1 CORN MILL. 2 BLOW MACHINES.
 1 MOUNDING MACH. 1 CORN. REEL.
 10' ROUND ROLL. 10000000. 2 BLOWERS.
 1 CENTER. 1' STAKES OF ELEVATORS.

D. H. MYERS, KENTUCKY PLANING MILL & GRIST MILL.
 HEAT: STOVES. LIGHTS: GAS.
 Machinery: 18' Planing. Shafting.
 18' Grist Mill. Stone.
 18' Lumber Mill. Stone.
 18' Lumber Mill. Stone.
 18' Lumber Mill. Stone.
 18' Lumber Mill. Stone.



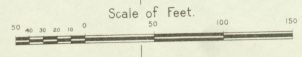
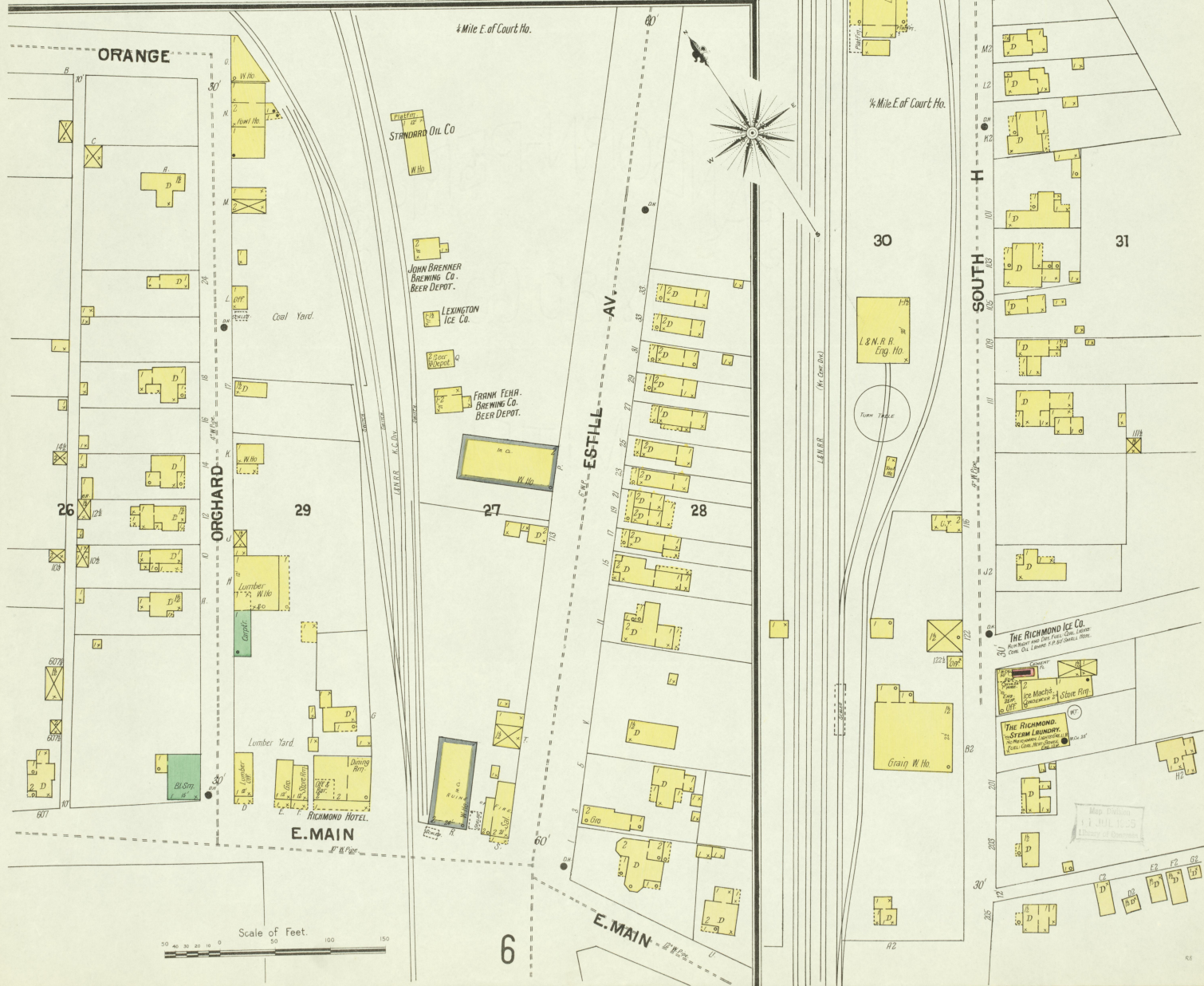
Aug. 1901
RICHMOND,
KY.

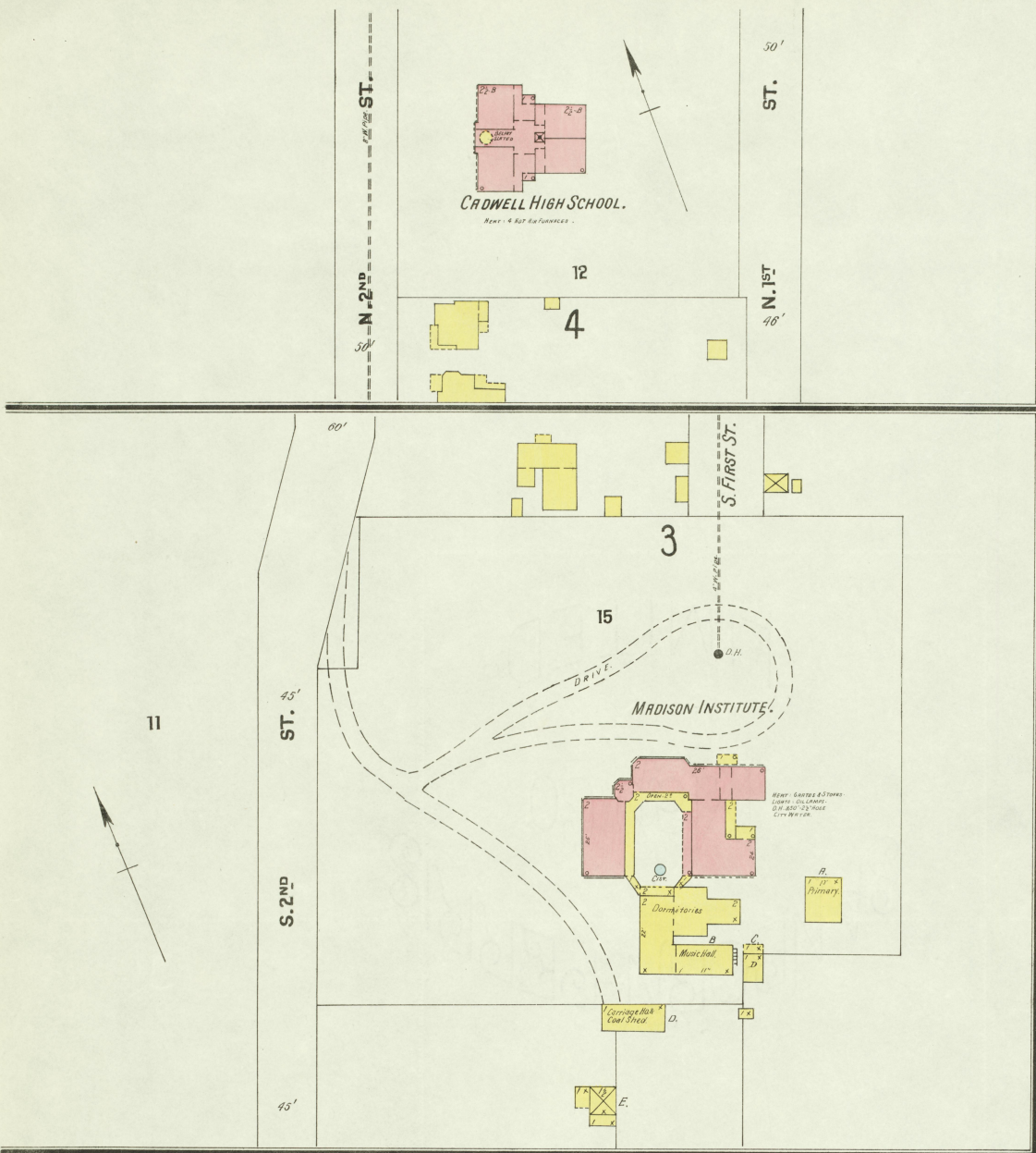
E. MAIN



3/4 Mile N.E. of Court Ho.

HUME COOPERAGE CO.
PRODUCT: WHISKEY BARRELS.
Detailed Map, with dimensions, furnished by
Contractors. Plans, Maps & City Ho. subject
of Contracting, shown attached to all Blue
prints.





CADWELL HIGH SCHOOL.
 Near 4TH East Entrance.

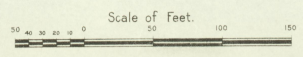
MADISON INSTITUTE.

CENTRAL UNIVERSITY.
 1/4 Mile S. of Court House.

C. U. MILLER
 Gymnasium.

Aug. 1901
RICHMOND
 KY.

ROW.
 DRIVE.
 FACULTY



Map drawn
 JULY 1901

X
 200

SILVER CREEK DISTILLERIES
Sited 8 Miles S.W. of Richmond Court Ho.

Aug. 1901
RICHMOND
KY.

BURNAM, BENNETT & CO.

BURNAM, BENNETT & CO. WARWICK DISTILLERY
Registered Distillery No. 1.
8th District, Madison Co. Ky.
(Not in Operation Since May 1895
Mash Capacity: 300 Bush. per day.
Yield 3 1/2 Gall's per Bush.

B.B. & Co.
U.S. BONDED W. Ho.
B
Cap. 8400 Bbls.
Per. Rack.
(Iron Club.)

W.S. HUME & CO.
U.S. BONDED W. Ho. 541, B.
Cap. 10,500 Bbls.
Per. Rack.
(Iron Club.)

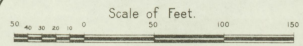
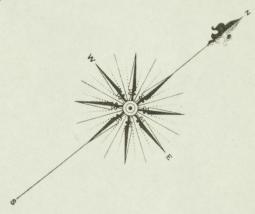
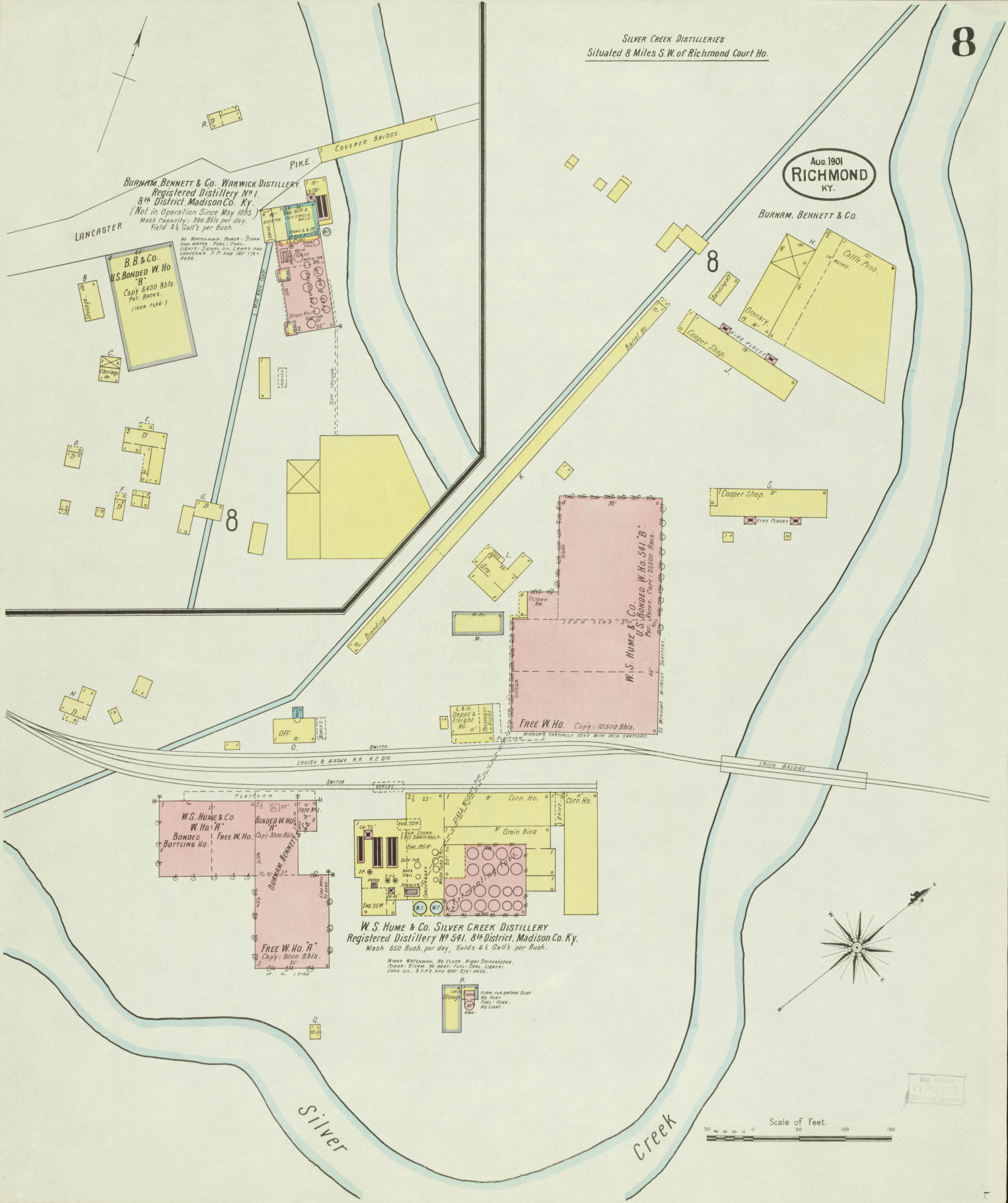
FREE W. Ho. Cap. 10,500 Bbls.

W.S. HUME & CO.
W. Ho. A
BONDED
FREE W. Ho.
Cap. 3000 Bbls.
BURNAM, BENNETT & CO.

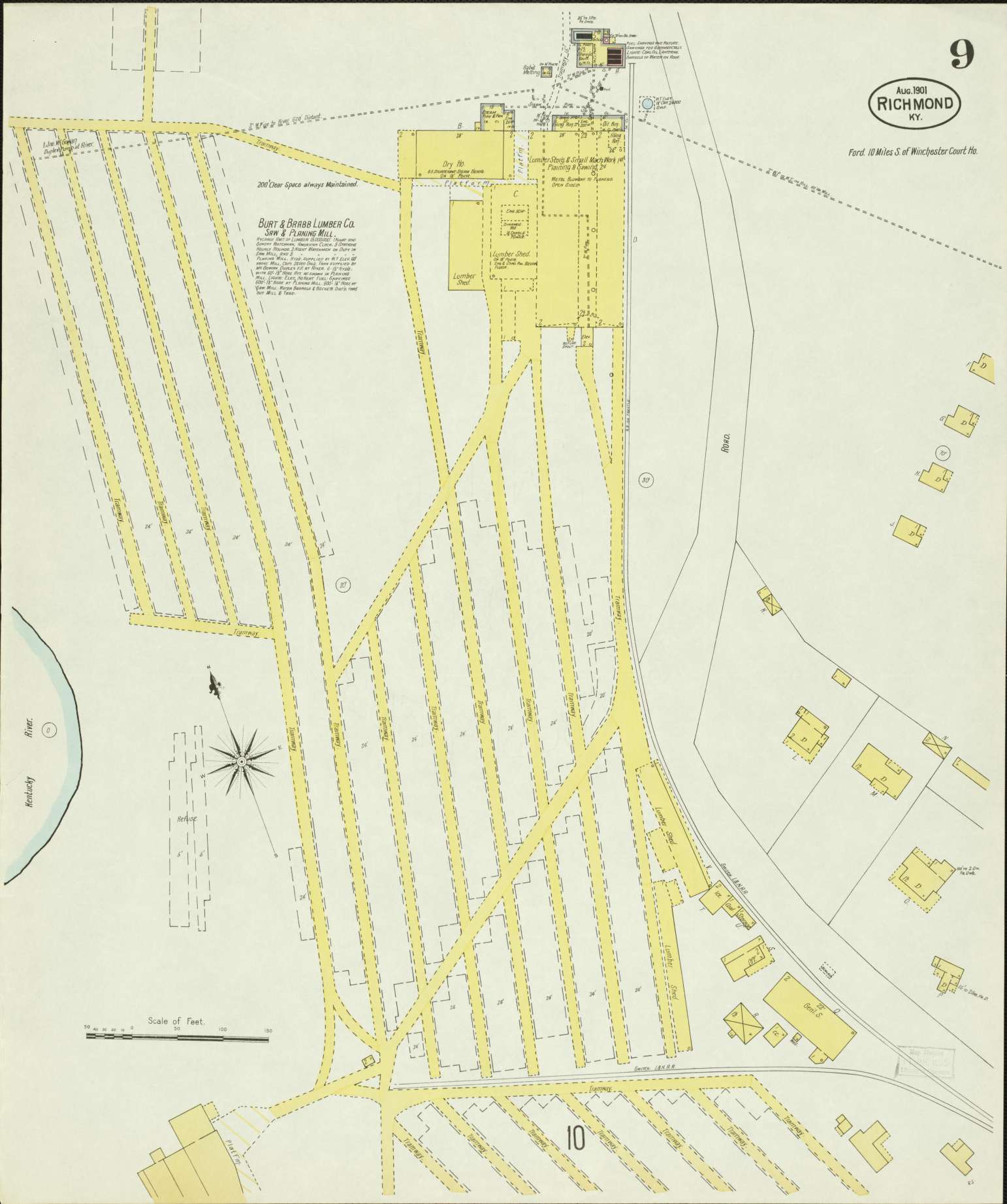
W.S. HUME & CO. SILVER CREEK DISTILLERY
Registered Distillery No. 541. 8th District, Madison Co. Ky.
Mash 650 Bush. per day, Yields 4 1/2 Gall's per Bush.

NIGHT WATCHMAN, NO CLOCK, NIGHT STEAMER.
POWER: STEAM, NO WIND, FUEL: COAL, LIGHTS:
LAMP OIL, 3 C.P.S. AND 400 220 VOLTS.

WATER FOR BATHING SLAP
NO FIAT
FUEL: COAL
NO LIGHT

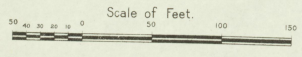
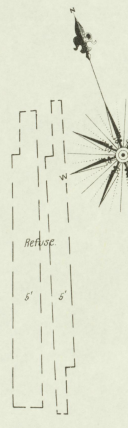
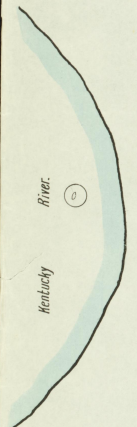


Map drawn
by
J. H. H. H.

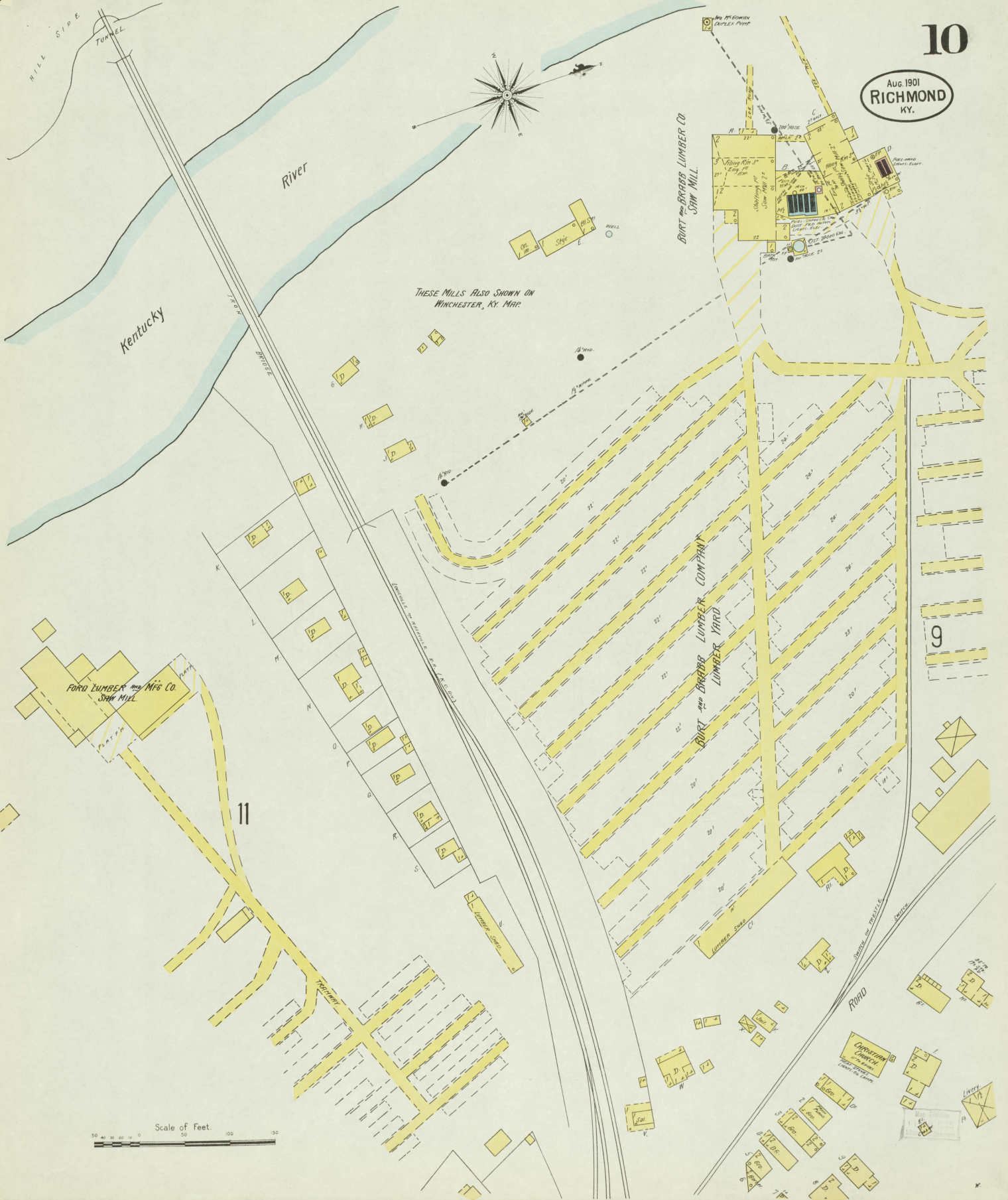


200' Clear Space always Maintained.

BURT & BRABB LUMBER CO.
SAW & PLANING MILL.
 PRINCIPAL SORT OF LUMBER IS OAK, WHITE PINE AND
 SUGAR PINE, AMERICAN CEDAR, SPRUCE,
 HEMLOCK, POPLAR, WILLOW, AND OTHERS AS
 ORDERED. PLANTING MILL, 17000 SQ. FT. CAPACITY. PLANING
 MILL, 17000 SQ. FT. CAPACITY. SAW MILL, 17000 SQ. FT.
 CAPACITY. MILL, 17000 SQ. FT. CAPACITY. MILL, 17000
 SQ. FT. CAPACITY. MILL, 17000 SQ. FT. CAPACITY.
 MILL, 17000 SQ. FT. CAPACITY. MILL, 17000 SQ. FT.
 CAPACITY. MILL, 17000 SQ. FT. CAPACITY. MILL, 17000
 SQ. FT. CAPACITY. MILL, 17000 SQ. FT. CAPACITY.



10



THESE MILLS ALSO SHOWN ON
WINCHESTER, KY. MAP

BURT and BREWER LUMBER CO
SAW MILL

BURT and BREWER LUMBER COMPANY
LUMBER YARD

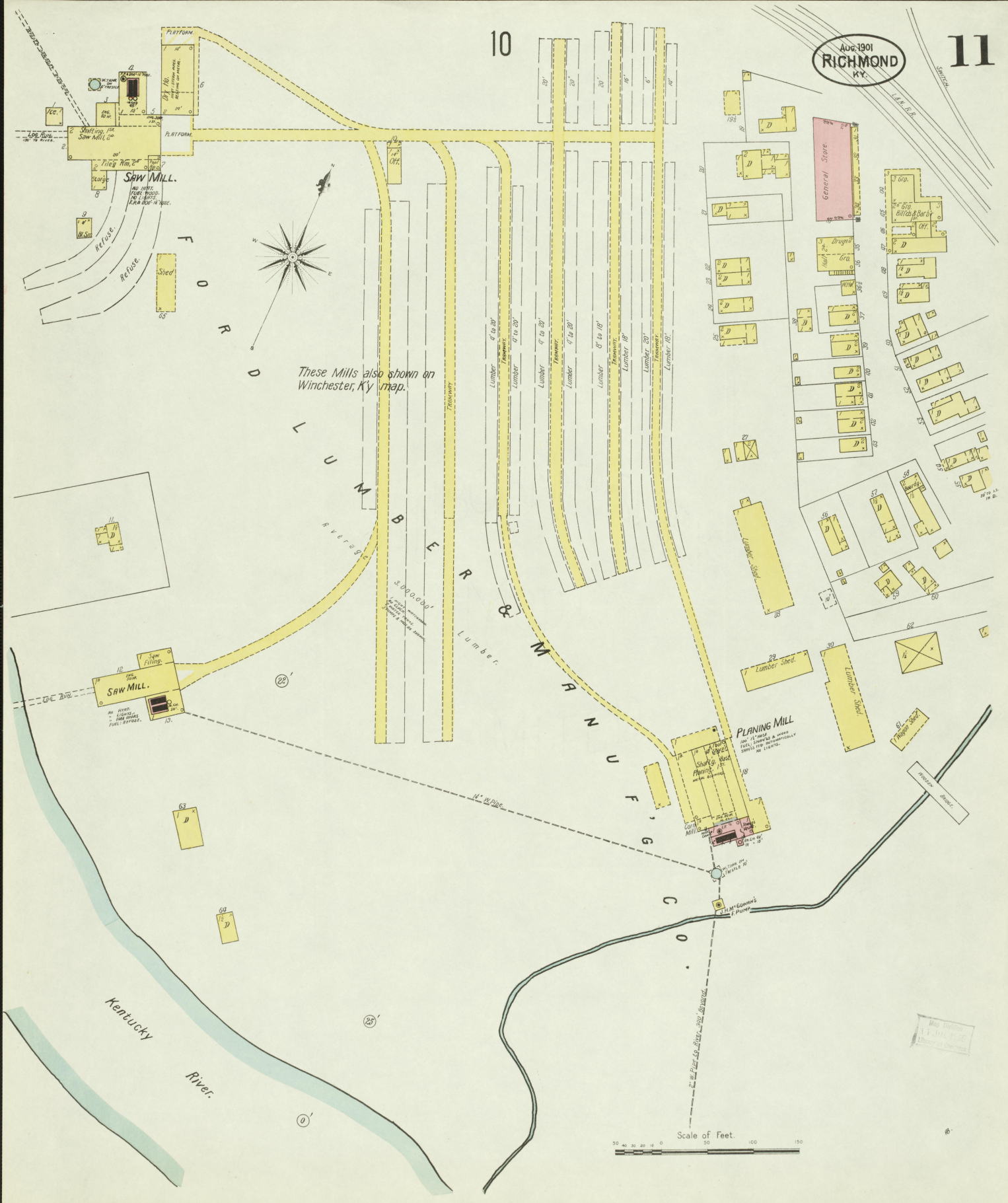
FORD LUMBER and Mfg Co
SAW MILL

Scale of Feet
0 50 100 150

11

9

Methodist
Church
Corner of
Main and
Green

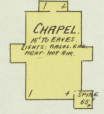
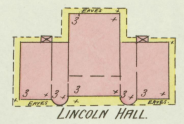
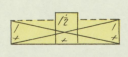


Aug. 1901
RICHMOND
KY.

12

SITUATED AT BEREA.
13 MILES S. OF RICHMOND COURT HO.

BEREA COLLEGE.
HEAT - STEVES AND HOT AIR.
6 TONS EXTRA OF FUEL PAIRS OF
WATER DISTRIBUTED.



CHESTNUT AV.

COLLEGE

CENTRE AV.

MAIN

12

C
O
L
L
E
G
E

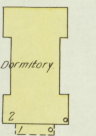
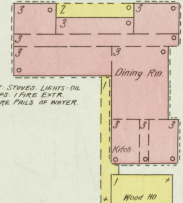
ROGERS HOUSE.



PRESIDENT'S HOUSE.



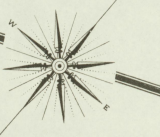
LADIES HOME.
DORMITORIES.



HOWARD HALL.

HEAT - STEVES
LIGHTS - OIL LAMP.

B
E
R
E
A



2

12

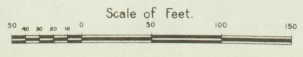
MAIN

CENTRE AV.

4

CHESTNUT AV.

12



ABOUT 800' TO LINCOLN HALL.
SEE ABOVE.