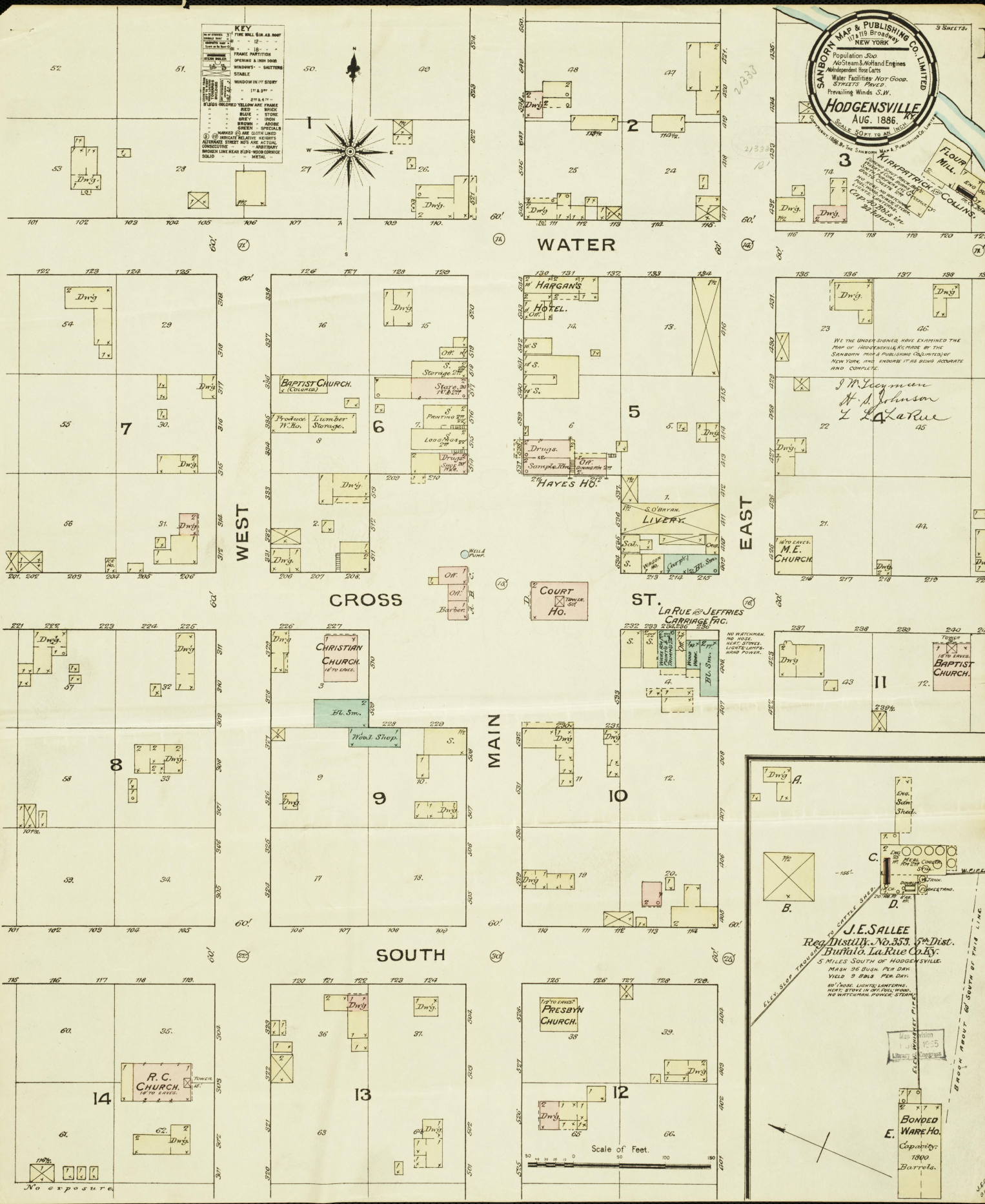
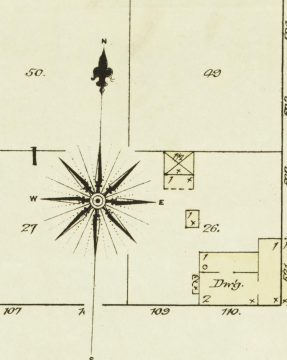


KEY

1	FIRE WALL OR AS ROOF
2	FRAME PARTITION
3	OPENING & IRON DOOR
4	WINDOWS - SHUTTERS
5	STABLE
6	WAGON WHEELS
7	WAGON WHEELS
8	WAGON WHEELS
9	WAGON WHEELS
10	WAGON WHEELS
11	WAGON WHEELS
12	WAGON WHEELS
13	WAGON WHEELS
14	WAGON WHEELS
15	WAGON WHEELS
16	WAGON WHEELS
17	WAGON WHEELS
18	WAGON WHEELS
19	WAGON WHEELS
20	WAGON WHEELS
21	WAGON WHEELS
22	WAGON WHEELS
23	WAGON WHEELS
24	WAGON WHEELS
25	WAGON WHEELS
26	WAGON WHEELS
27	WAGON WHEELS
28	WAGON WHEELS
29	WAGON WHEELS
30	WAGON WHEELS
31	WAGON WHEELS
32	WAGON WHEELS
33	WAGON WHEELS
34	WAGON WHEELS
35	WAGON WHEELS
36	WAGON WHEELS
37	WAGON WHEELS
38	WAGON WHEELS
39	WAGON WHEELS
40	WAGON WHEELS
41	WAGON WHEELS
42	WAGON WHEELS
43	WAGON WHEELS
44	WAGON WHEELS
45	WAGON WHEELS
46	WAGON WHEELS
47	WAGON WHEELS
48	WAGON WHEELS
49	WAGON WHEELS
50	WAGON WHEELS
51	WAGON WHEELS
52	WAGON WHEELS
53	WAGON WHEELS
54	WAGON WHEELS
55	WAGON WHEELS
56	WAGON WHEELS
57	WAGON WHEELS
58	WAGON WHEELS
59	WAGON WHEELS
60	WAGON WHEELS
61	WAGON WHEELS
62	WAGON WHEELS
63	WAGON WHEELS
64	WAGON WHEELS
65	WAGON WHEELS
66	WAGON WHEELS
67	WAGON WHEELS
68	WAGON WHEELS
69	WAGON WHEELS
70	WAGON WHEELS
71	WAGON WHEELS
72	WAGON WHEELS
73	WAGON WHEELS
74	WAGON WHEELS
75	WAGON WHEELS
76	WAGON WHEELS
77	WAGON WHEELS
78	WAGON WHEELS
79	WAGON WHEELS
80	WAGON WHEELS
81	WAGON WHEELS
82	WAGON WHEELS
83	WAGON WHEELS
84	WAGON WHEELS
85	WAGON WHEELS
86	WAGON WHEELS
87	WAGON WHEELS
88	WAGON WHEELS
89	WAGON WHEELS
90	WAGON WHEELS
91	WAGON WHEELS
92	WAGON WHEELS
93	WAGON WHEELS
94	WAGON WHEELS
95	WAGON WHEELS
96	WAGON WHEELS
97	WAGON WHEELS
98	WAGON WHEELS
99	WAGON WHEELS
100	WAGON WHEELS



WE THE UNDER-SIGNED HAVE EXAMINED THE MAP OF HODGENSVILLE, KY. MADE BY THE SARBORN MAP & PUBLISHING CO. LIMITED OF NEW YORK, AND ENDORSE IT AS BEING ACCURATE AND COMPLETE.

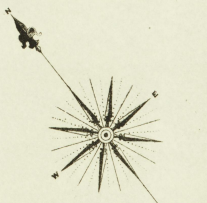
J. M. Gayman
H. S. Johnson
L. L. LaRue

J. E. SALLEE
Reg. Distillery No. 353, 5th Dist.
Buffalo, La. Rue Co., Ky.
5 MILES SOUTH OF HODGENSVILLE.
MAKES 36 BUSH. PER DAY
YIELD 3 BALS. PER DAY.
60% RICE, LIGHTS, UNIFORM
HEAT, STOVE IN W. FULL WOOD.
NO WATCHMAN, POWER STEAM.

BONDED WARE HO.
Capacity 7000 Barrels.

Scale of Feet: 0 50 100 150

AUG. 1886
HODGENSVILLE
KY.



H. CATTLE SHED.
LENGTH 175 FEET.

FREE WARE HO. E. Capacity 8000 Barrels.
BONDED WARE HO. A. Capacity 13000 Barrels.

BONDED WARE HO. B. Capacity 13000 Barrels.

COOPER SHOP

K. CATTLE SHED.

BARDSTOWN PIKE

ATHERTON HOTEL. F.

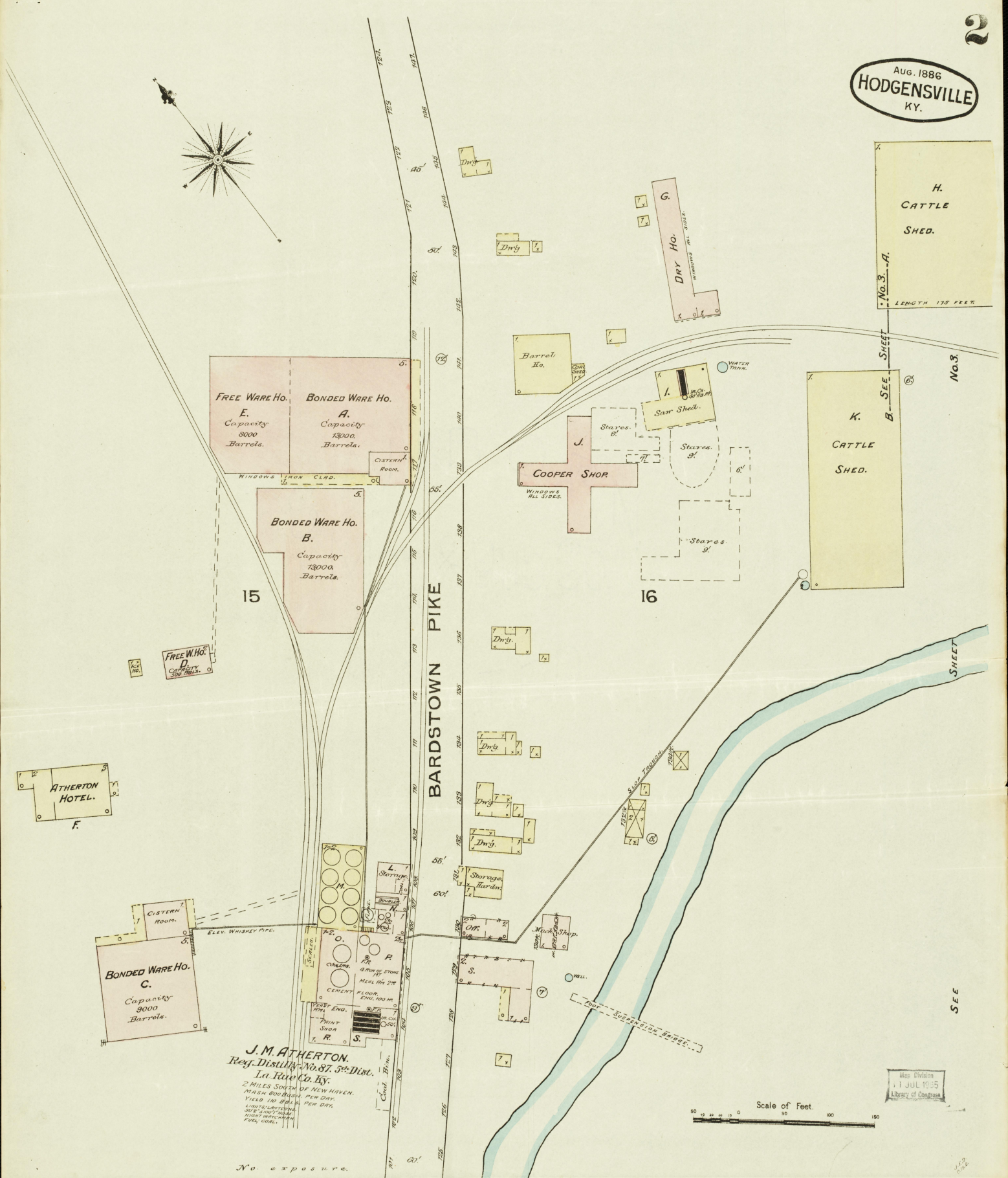
BONDED WARE HO. C. Capacity 9000 Barrels.

J. M. ATHERTON.
Reg. Distillery No. 87, 5th Dist.
La. Rue Co. Ky.
2 MILES SOUTH OF NEW HAVEN.
WASH 800 GALS PER DAY.
YEED 110 GALS PER DAY.
LIGHTS, LAMP, OIL, & C.
NIGHT WATCHMAN.
FIRE CO.

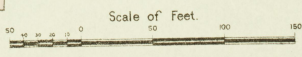
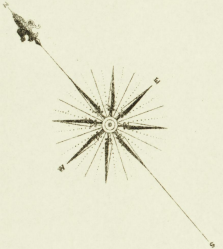
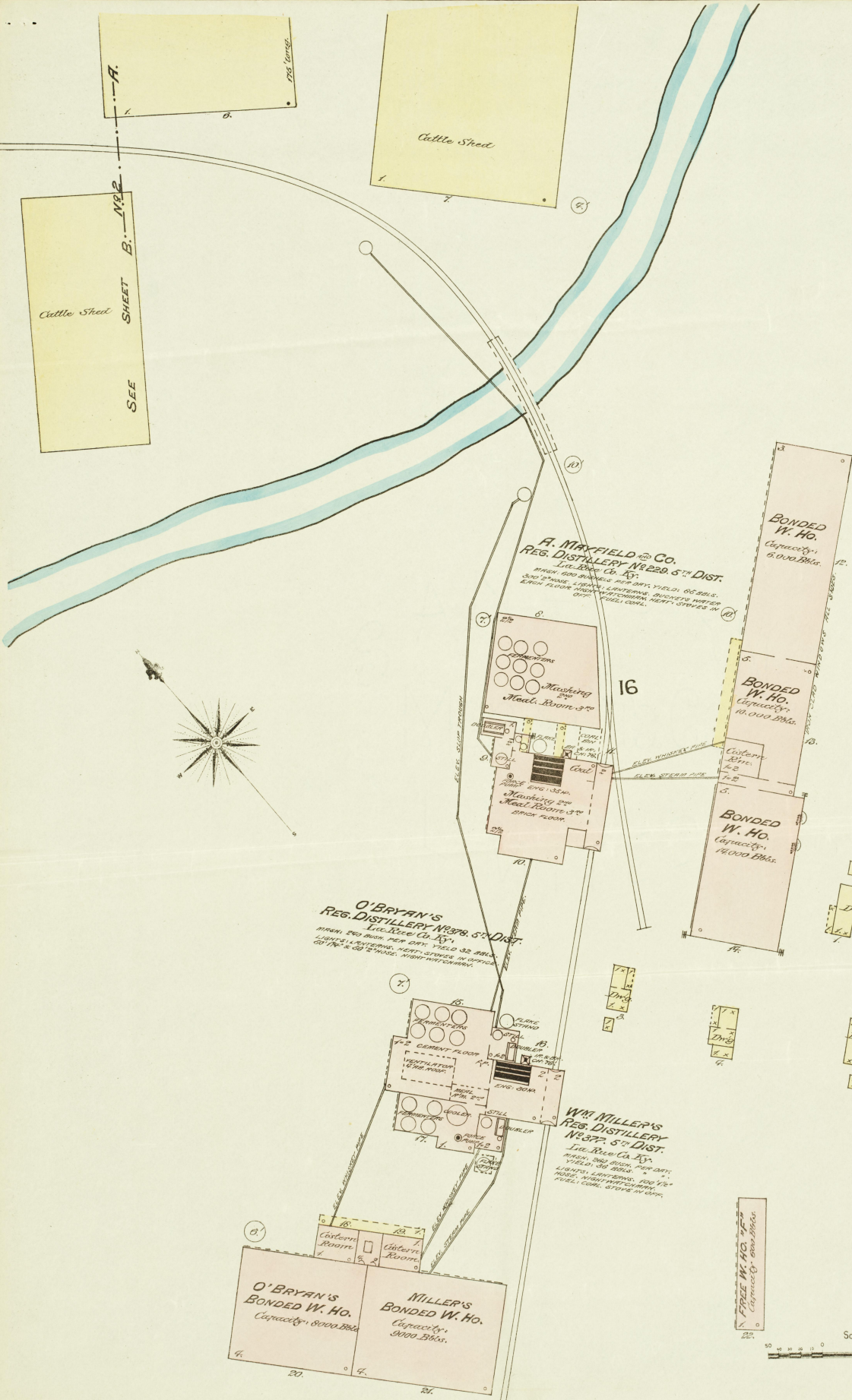
Scale of Feet
0 20 40 60 80 100 120 140 160

Map Division
JUL 1895
Library of Congress

No exposure.



AUG. 1886
HODGENSVILLE
KY.



Map Division
JUL 19 1885
Library of Congress