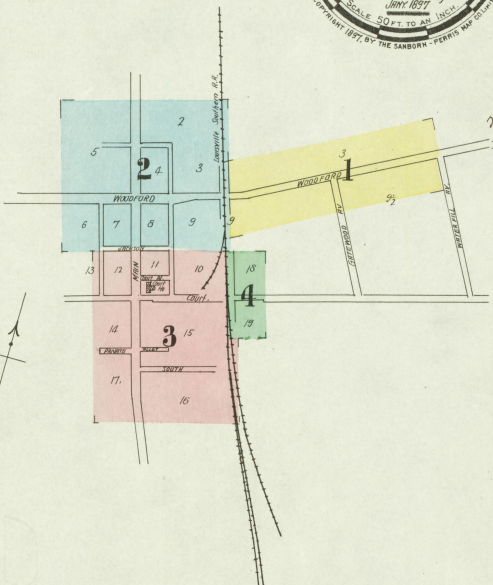


12 Streets



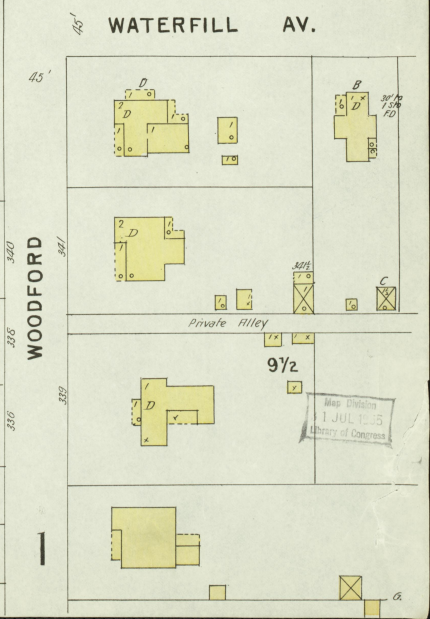
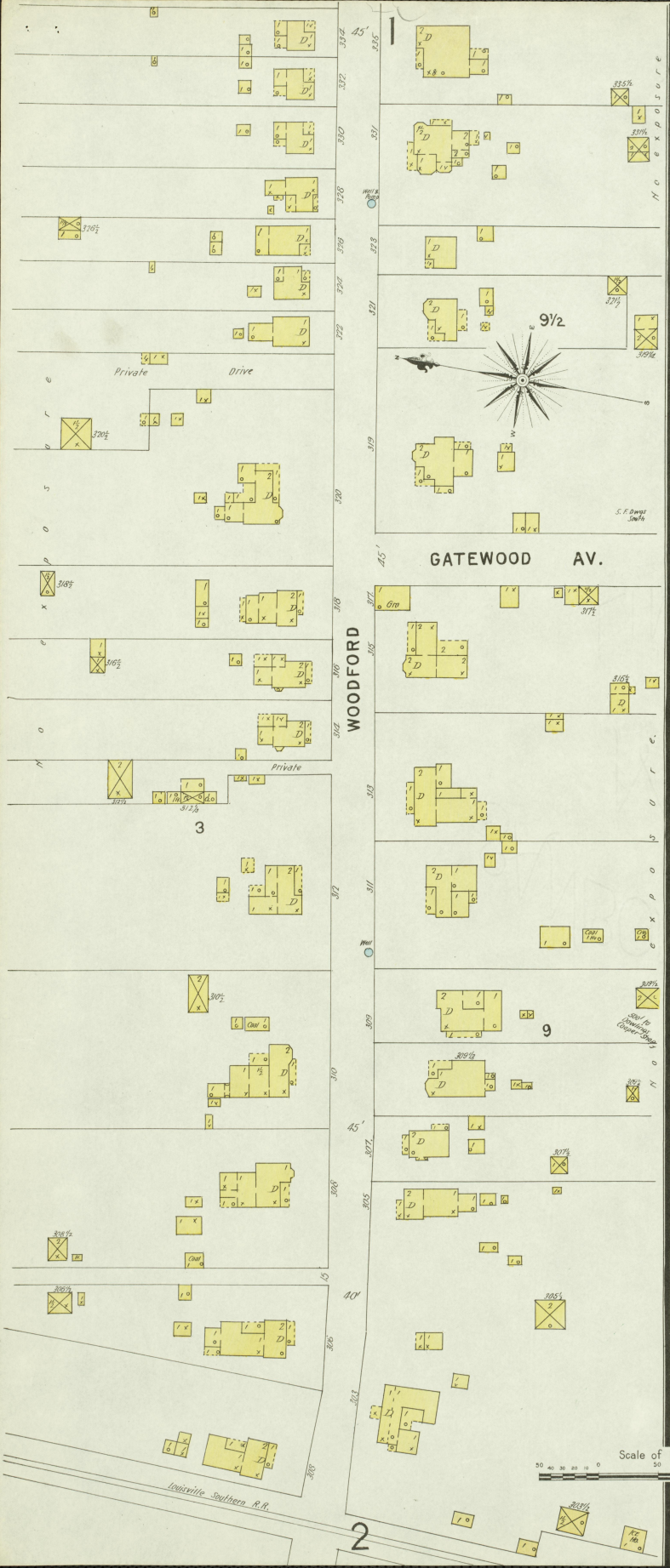
KEY
FIRE WALLS & ROOF
FRAME PARTITION
WINDOWS - SHUTTERS
STABLE
WINDOW IN 1ST STORY
1ST & 2ND
2ND & 3RD
3RD & 4TH
BLUES COLORED YELLOW ARE FRAMES
RED - BRICK
BULE - STONE
GREY - IRON
BROWN - FIRE WOOD
GREEN - SPECIALS
MARKED BY ARE CITY LINES
ALTERNATE STREET MAPS ACTUAL
CONSTRUCTIVE - IRON RAIL
BROWN LINE NEAR BLDG - WOOD CORNICE
SOLID - METAL



14674 Mar. 18, 1897

INDEX.

Table with columns: SPECIALS., G, H, W, P. Lists various industrial and commercial buildings such as distilleries, mills, and churches.

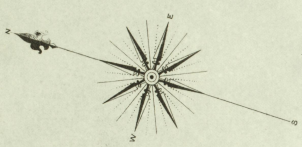


Scale of Feet. 0 50 100 150

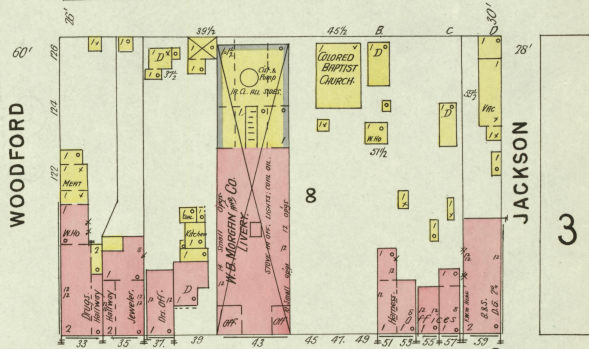
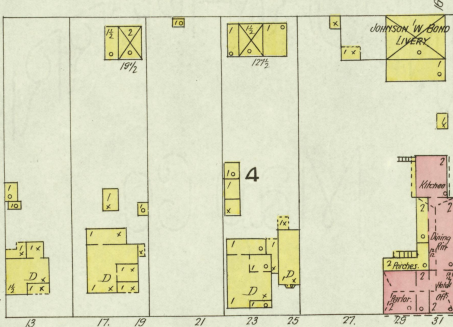
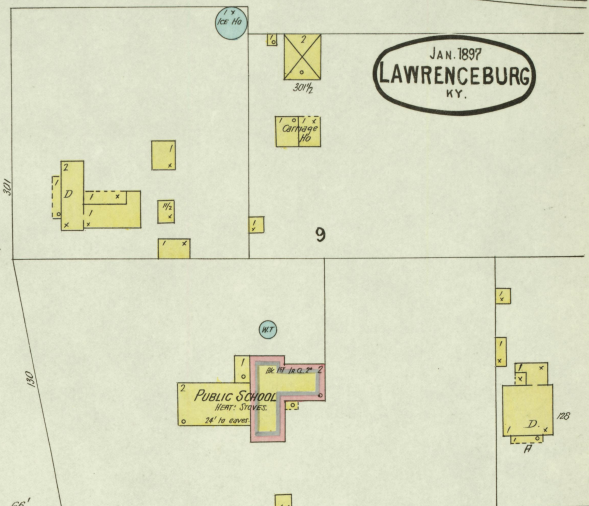
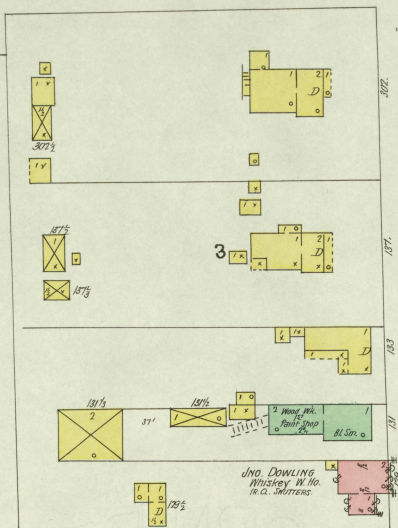
Map Division JUL 12 1915 Library of Congress

Louisville Southern R.R.

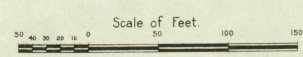
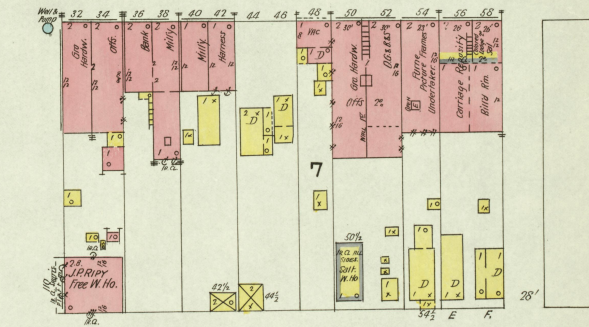
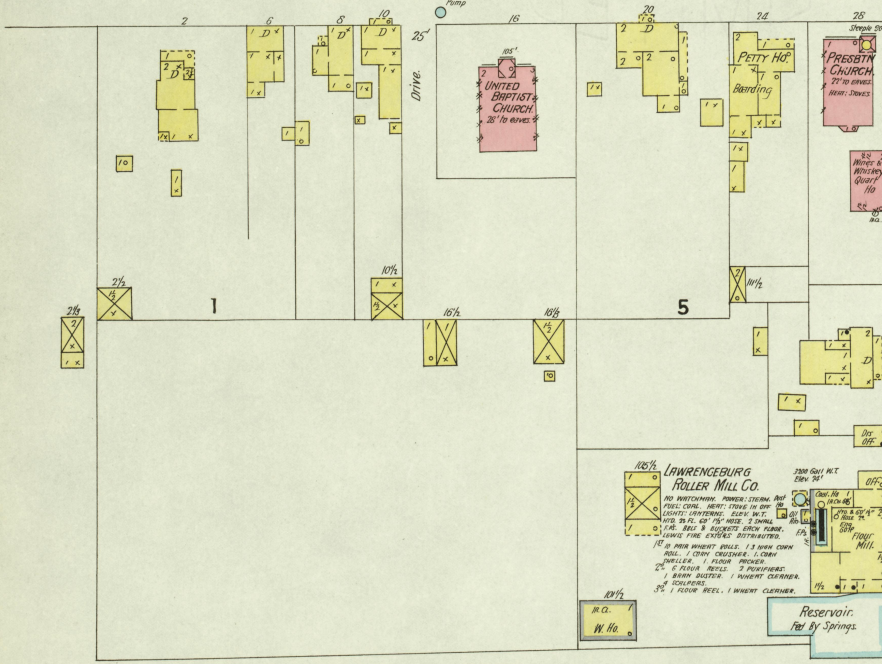
JAN. 1897
LAWRENCEBURG
KY.



2



MAIN



Map Division
JUL 11, '35
Library of Congress

JAN 1897
LAWRENCEBURG
KY.

J. T. GRAY (Partner B. D. Hawkins & Bro.)
Regist. Distillery No 7, 8th District, Anderson Co, Ky.
PRODUCTION - Bourbon Whisky - Fermentive Sour Mash Process - Mash
CAP. 25,000 BLS - No Malt - No Pot Still - No Rectifier - No
FUEL - COAL - LIGHTS - K. OIL - HEAT - STEAM IN OFF
- NO FIRE APPS.

7 1/2 Miles S. of Lawrenceburg.

WILEY SERRAY
Regist. Distillery No 45, 8th Dist, Anderson
Co, Ky.
PRODUCTION - Bourbon Whisky - Fermentive Sour Mash
MASH - CAP. 10,000 BLS - No Malt - No Pot Still - No
Rectifier - No FUEL - COAL - LIGHTS - K. OIL - HEAT - STEAM IN OFF
- NO FIRE APPS.

Bonded W. Ho. No 1
Cap. 2,000 BLS
Per. Procs.
Steam Heat

Bonded W. Ho. No 2
Cap. 3,000 BLS
Per. Procs.
Steam Heat

Free W. Ho. No 1
Cap. 1,000 BLS
Per. Procs.
No Heat

3 1/2 Miles W. of McBrayer Depot.

No Exposure

No Exposure

4 1/2 Miles W. of McBrayer Depot.

T. H. BOND & BRO. (Partners Hawkins & Bro.)
Regist. Distillery No 236, 8th Dist, Anderson Co, Ky.
PRODUCTION - Bourbon Whisky - Fermentive Sour Mash Process - Mash
CAP. 650 BLS PER DAY
FUEL - COAL - LIGHTS - K. OIL - HEAT - STEAM IN OFF
- NO FIRE APPS.

J. R. WALKER
Regist. Distillery No 434, 8th Dist, Anderson Co, Ky.
PRODUCTION - Bourbon Whisky - Fermentive Sour Mash Process - Mash
CAP. 650 BLS PER DAY
FUEL - COAL - LIGHTS - K. OIL - HEAT - STEAM IN OFF
- NO FIRE APPS.

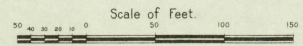
1 1/2 Miles N. E. of Lawrenceburg Court Ho.

Bonded W. Ho. No 3
Cap. 10,000 BLS
(In C.)

Bonded W. Ho. No 2
Cap. 3,000 BLS
(In C.)

Bonded W. Ho. No 1
Cap. 2,000 BLS
(In C.)

Cattle Pens



Map Division
JUL 11 1895
Library of Congress

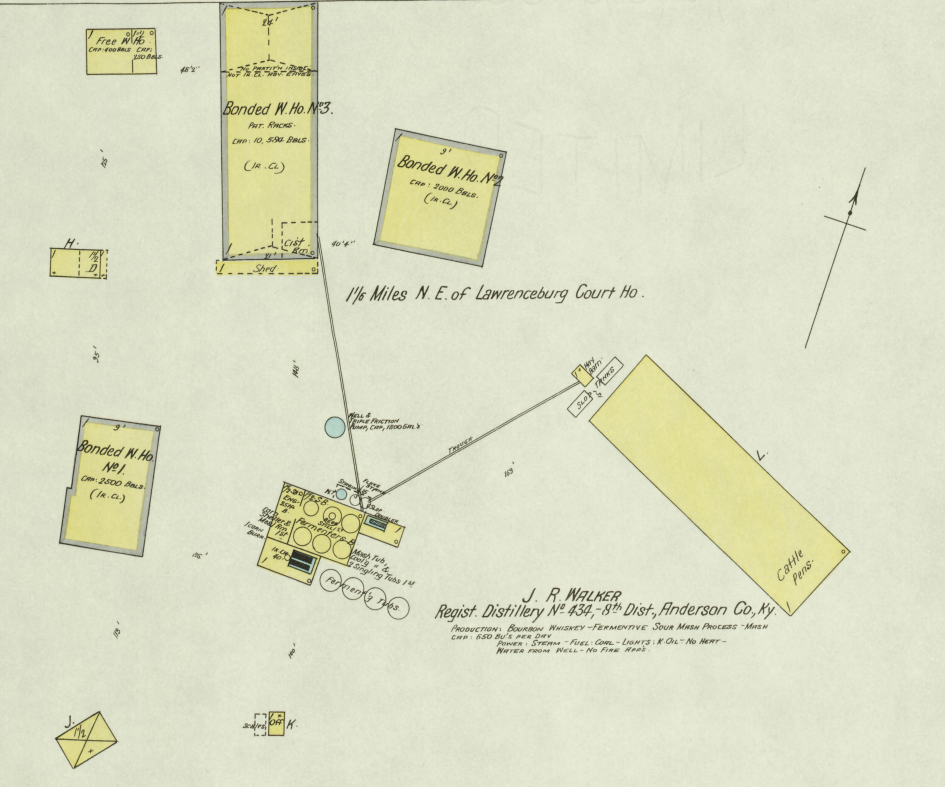
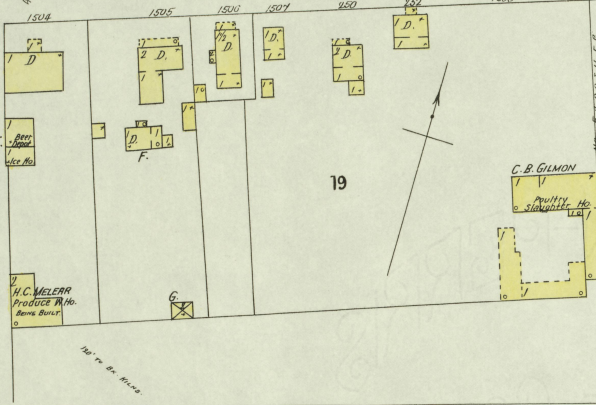
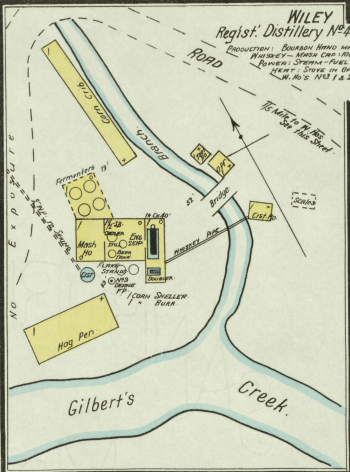
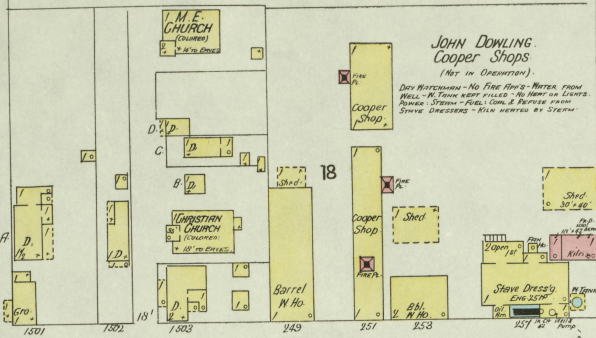
Gilbert's Creek

Gilbert's Creek

COURT ROAD

COUNT ROAD

3

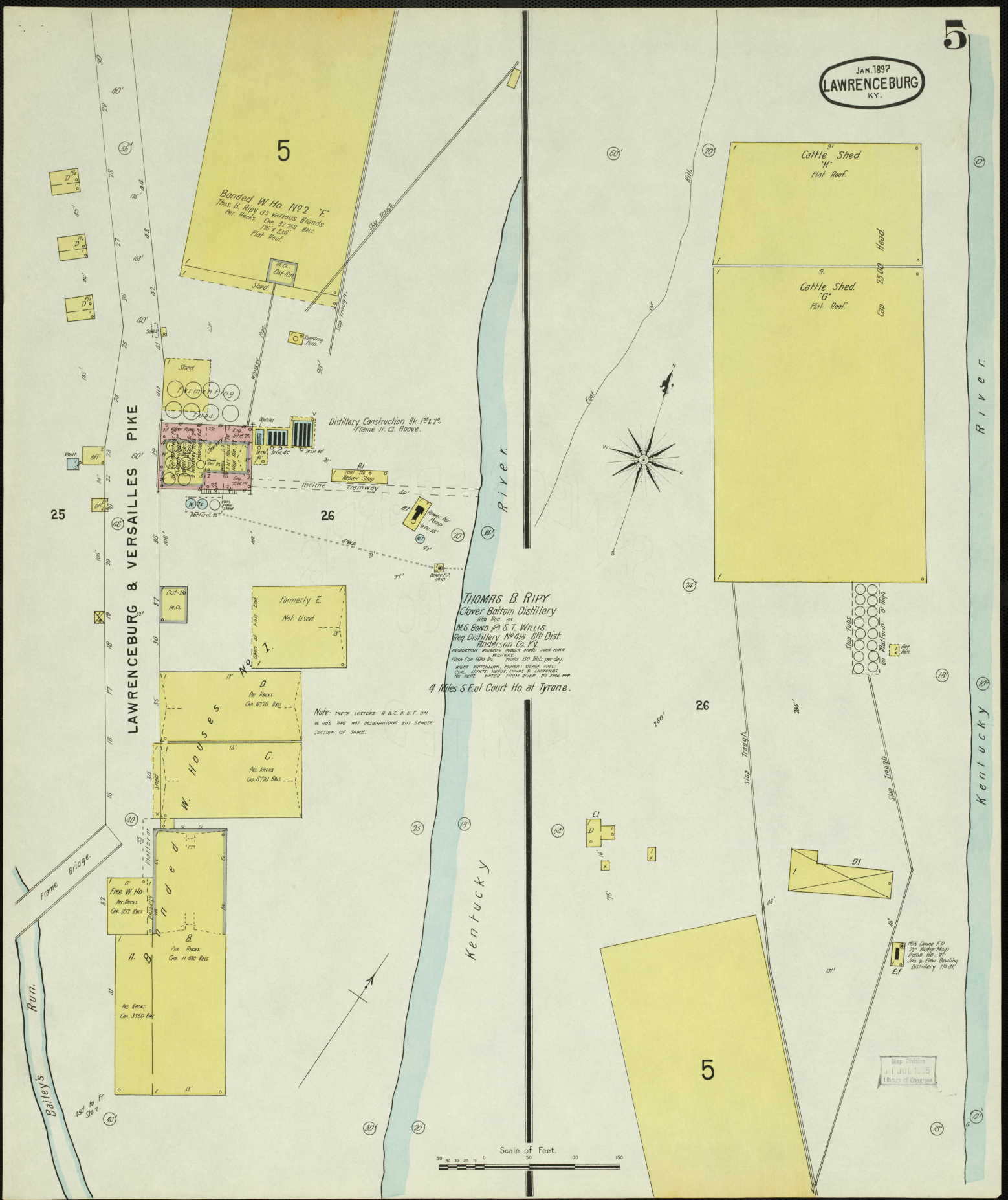


JAN. 1897
LAWRENCEBURG
KY.

LAWRENCEBURG & VERSAILLES PIKE

Kentucky

Kentucky



Banded W Ho No 2. T.
Thos B Rippy vs various Brands
Per. Racks Cap. 32,700 BBLs
175' x 316' eaks.
Flat Roof.

Cattle Shed
14'
Flat Roof

Cattle Shed
6'
Flat Roof

Shed
Per. Racks
Cap. 32,700 BBLs

Distillery Construction Bk 12' x 22'
Frame fr. G. Above.

Formerly E.
Not Used

W. Houses
D
Per. Racks
Cap. 6720 BBLs
G.
Per. Racks
Cap. 6720 BBLs

Free W Ho
Per. Racks
Cap. 187 BBLs

Banded
B
Per. Racks
Cap. 31600 BBLs

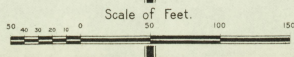
THOMAS B RIPPY
Clover Bottom Distillery
File No. 45.
M.S. Bond, #8 S. T. WILLIS.
Reg. Distillery No. 418, 8th Dist.
Anderson Co. Ky.
PRODUCTION: MODERN POWER MADE: FOUR MARK
BRANDS.
Mash Cap. 1400 Bu. Pot Still 150 BBLs per day.
MOULT: BUTTERMILK, BARLEY, STRAW, HULLS.
TOTAL LIQUOR: KEROSENE, LAMPERS & LAMP OILS.
NO. MARKS: "RIPPER" "ROCK" MARKER. THE FINEST CAP.

4 Miles S.E. of Court Ho at Tyrone.

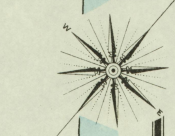
Note: THESE LETTERS A, B, C, D, E, F, G, H, W. HO'S ARE NOT DEMONSTRATIONS BUT DENOTE SECTION OF SAME.

1895 Oliver F.D.
27 - Miller Map
Pencil Ho. of
Geo. & Edw. Downing
Distillery No. 418

Miss. Publin
JUL 1 1895
Library of Congress



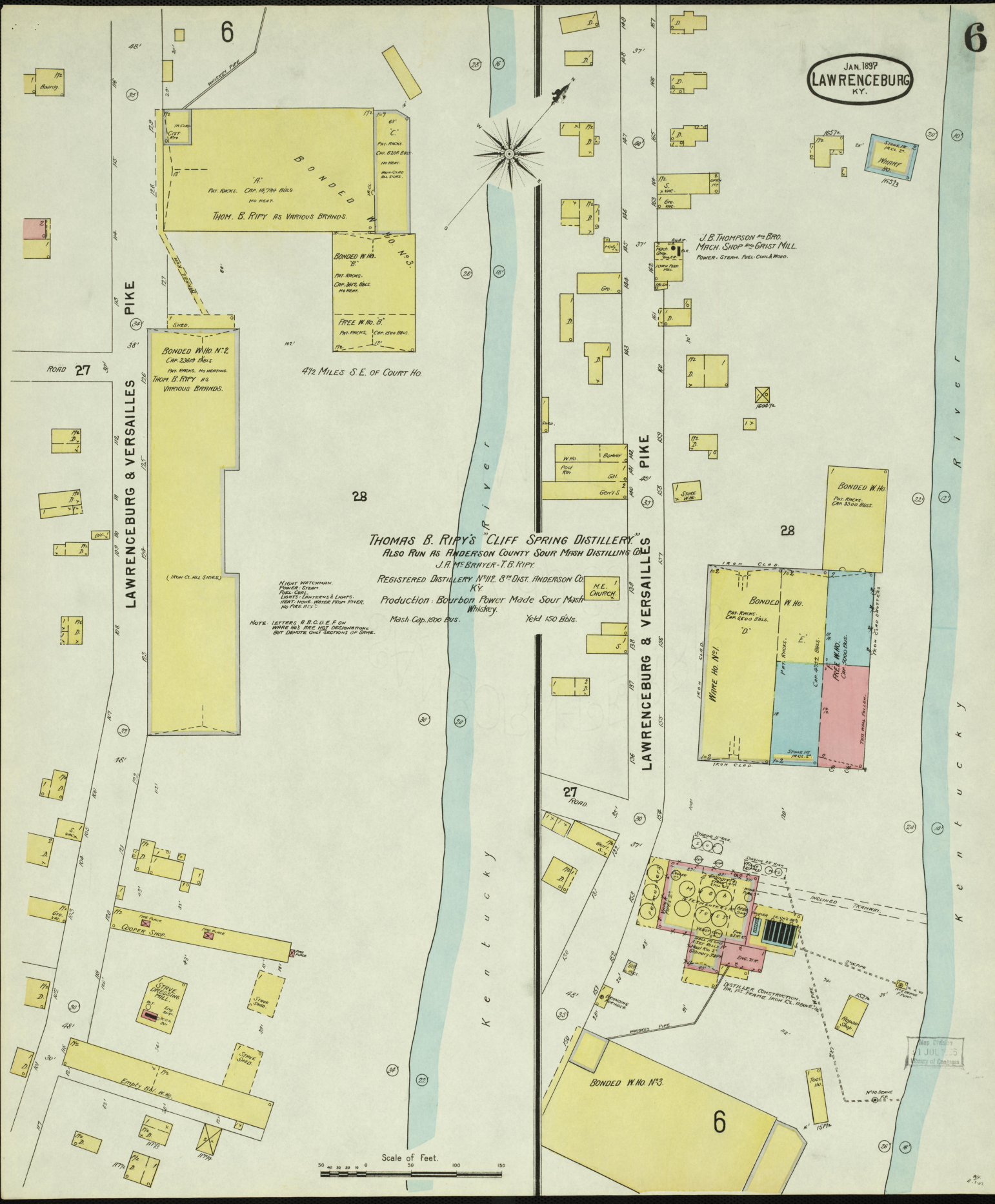
JAN. 1897
LAWRENCEBURG
KY.



PIKE
LAWRENCEBURG & VERSAILLES

PIKE
LAWRENCEBURG & VERSAILLES

KENTUCKY



THOMAS B. RIPLEY'S "CLIFF SPRING DISTILLERY"
ALSO RUN AS ANDERSON COUNTY SOUR MASH DISTILLING CO.
J.R. McBRAYER-T.B. RIPLEY.
REGISTERED DISTILLERY N^o 912, 8th DIST. ANDERSON CO.
KY.
Production Bourbon Power Made Sour Mash
Whisky. Mash Cap. 1500 BUS. Yield 150 Bbls.

NOTE: LETTERS A B C D E F ON
WHAFFS ARE NOT DISCONTINUED
BUT DENOTE ONLY SECTIONS OF SAME.

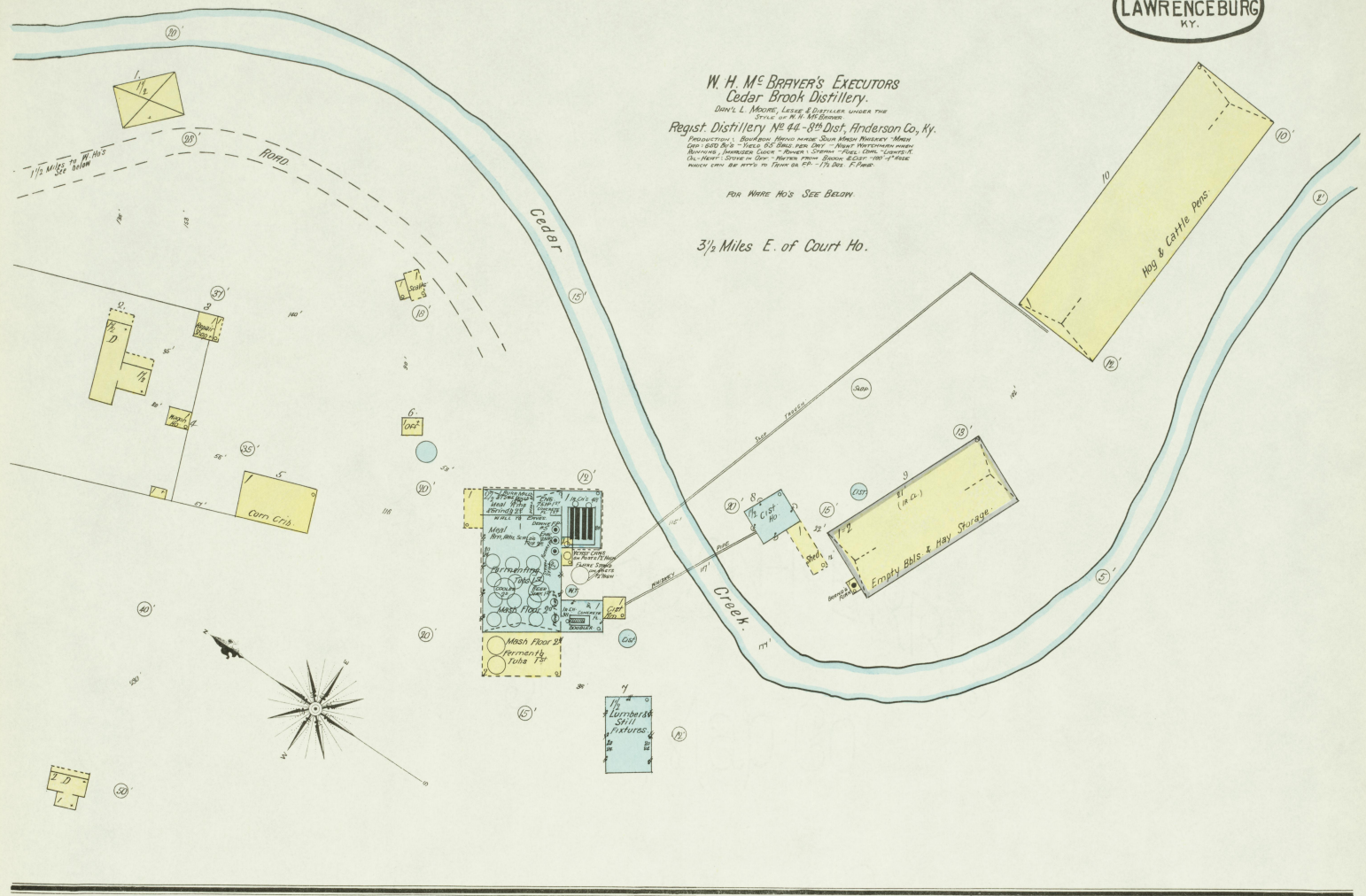
Scale of Feet.
0 50 100 150

Also Engr'd
JULY 15
Library of Congress

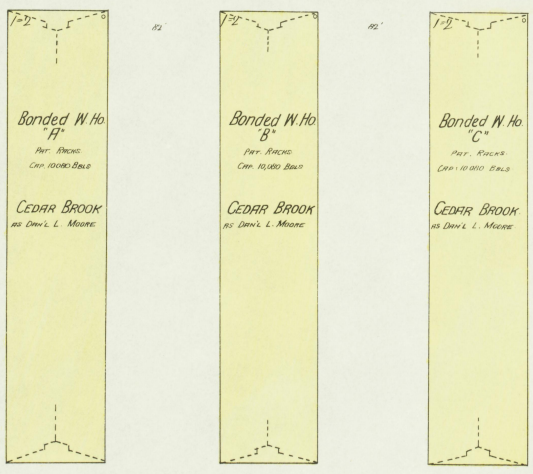
JAN. 1897
LAWRENCEBURG
KY.

W. H. Mc BRAYER'S EXECUTORS
Cedar Brook Distillery.
DAN'L L. MOORE, LESSEE & DISTILLER UNDER THE
STYLE OF W. H. Mc BRAYER.
Regist. Distillery No. 44-8th Dist. Anderson Co., Ky.
PRODUCTION'S, BOTTLED, BRAND NAME, SOAK, MASH, PRESSURE, MASH,
LOW, 6000 BBL'S - TONNE'S, 1000 BBL'S, 2000 - HOGS, HERRING, HERRING,
BURNING, JAMESON'S, RIVER, STEAM - FISH, COM - LINDSAY'S
10,000 - STEAM IN COOK - HERRING FROM SPOON, 6000 - 100 - 1000
MASH, COM - STEAM IN COOK - HERRING FROM SPOON - 10,000 - F. FISH.

FOR WARE HO'S SEE BELOW.
3 1/2 Miles E. of Court Ho.



1 1/2 Miles to Dashiely
See above ROAD

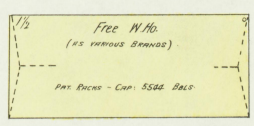


WARE HO'S OF CEDAR BROOK DISTILLERY (See Above)
1 1/2 Miles from Distillery

No. WORK HOUS - FEET - STORE IN COOK - NO LIGHTS - NO F. BAY.



2 1/2 Miles E. of Court Ho



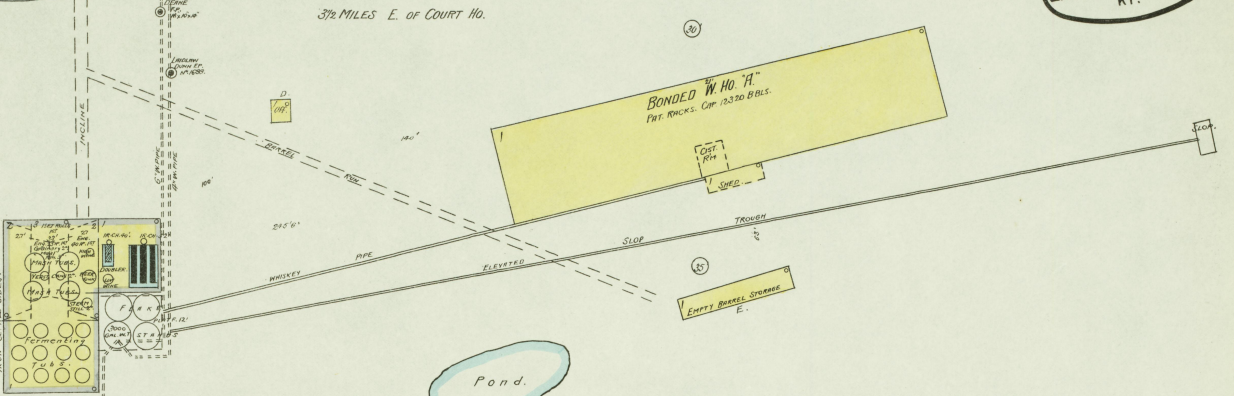
Scale of Feet.
0 20 40 60 80 100 120 140 160 180

Map Division
1 JUL 1 1895
Library of Congress

1897

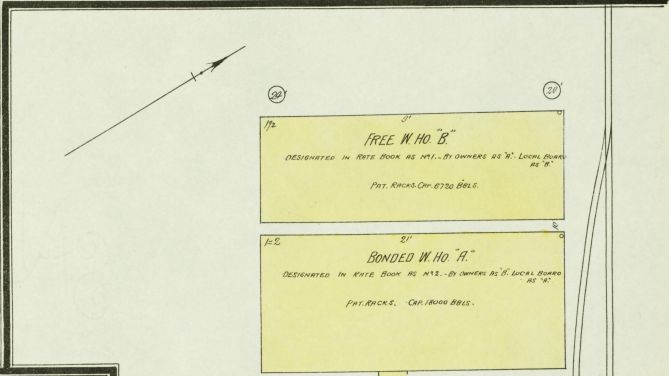
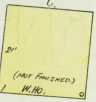
JAN 1897
LAWRENCEBURG
KY.

3 1/2 MILES E. OF COURT HO.



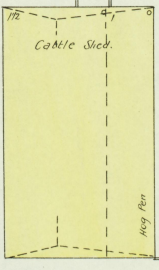
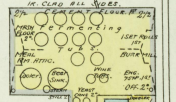
J. P. RIPPY'S ASSIGNEES.
 REGISTERED DISTILLERY N^o. 5. 8th DISTRICT. ANDERSON CO. KY.
 Production Bourbon Whiskey, Fermentive
 Sour Mash Process.
 Mash. Cap. 500 Bus. Yield 50 Bbls per Day. Power Made Mash.

NOTE: WATCHMAN. POWER: STEAM. FUEL: COAL. LIGHTS: LANTERNS.
 RAILS: & LARD OIL. HEAT: STONE IN CUP & IN DISTILLERS.
 WINDY: FROM OTHER SIDE. PIPES: 200/170/100. THIS CAN BE ATTACHED
 TO F.A. OR WINDY TANK.



W. B. SAFFELL
 REGISTERED DISTILLERY N^o. 123. 8th DIST.
 ANDERSON CO. KY.
 Production Bourbon Hand Made Sour Mash Whiskey.
 Mash. Cap. 500 Bus. Yield 50 Bbls per DAY.

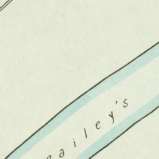
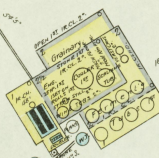
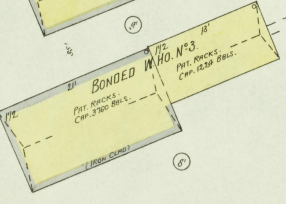
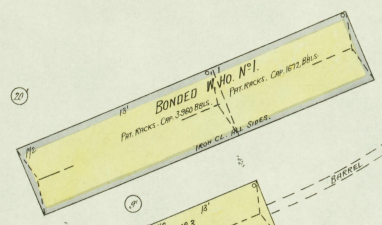
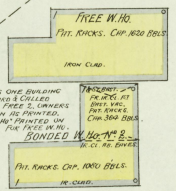
NOTE: WATCHMAN. POWER: STEAM.
 LIGHTS: LANTERNS.
 HEAT: STONE IN CUP.
 WINDY: FROM OTHER SIDE.
 NO FIRE APPARATUS.
 FUEL: COAL.



JOHN and EDWARD DOWLING (FORMERLY JOHN DOWLING and CO.)
 UNDER THE STYLE OF WATERFALL and FRAZIER.
 REGISTERED DISTILLERY N^o. 91. 8th DIST. ANDERSON CO. KY.
 Production Bourbon Power Made Sour Mash Whiskey.
 Mash. Cap. 250 Bus. Yield 25 Bbls per Day.

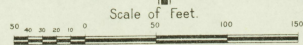
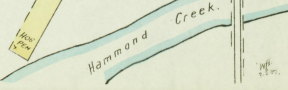
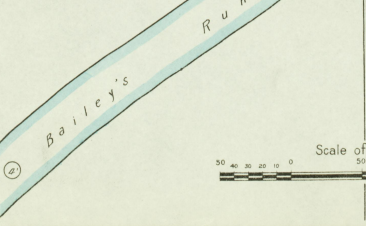
NOTE: WATCHMAN. POWER: STEAM. FUEL: COAL. HEAT: STONE IN CUP.
 LIGHTS: LANTERNS. WINDY: PUMPED FROM 100 FOOT DIVER.
 BY DRIVE P.P. N^o. 8. 30/25/15/10/5. THIS CAN BE ATTACHED TO
 W. HO.

CLASSIFIED AS ONE BUILDING
 BY LOCAL BOARD & CALLED
 BONDING B. FREE W. HO. CAPS.
 DESIGNATION IS PRINTED
 ON L.S. & LETTERS THERE SHOWN PRINTED ON
 W. HO. FURN HAS NO NUMBER FOR PAGES IN W.
 HO. CAP. 100 BBL'S.



1/2 MILES S.E. OF COURT HO.

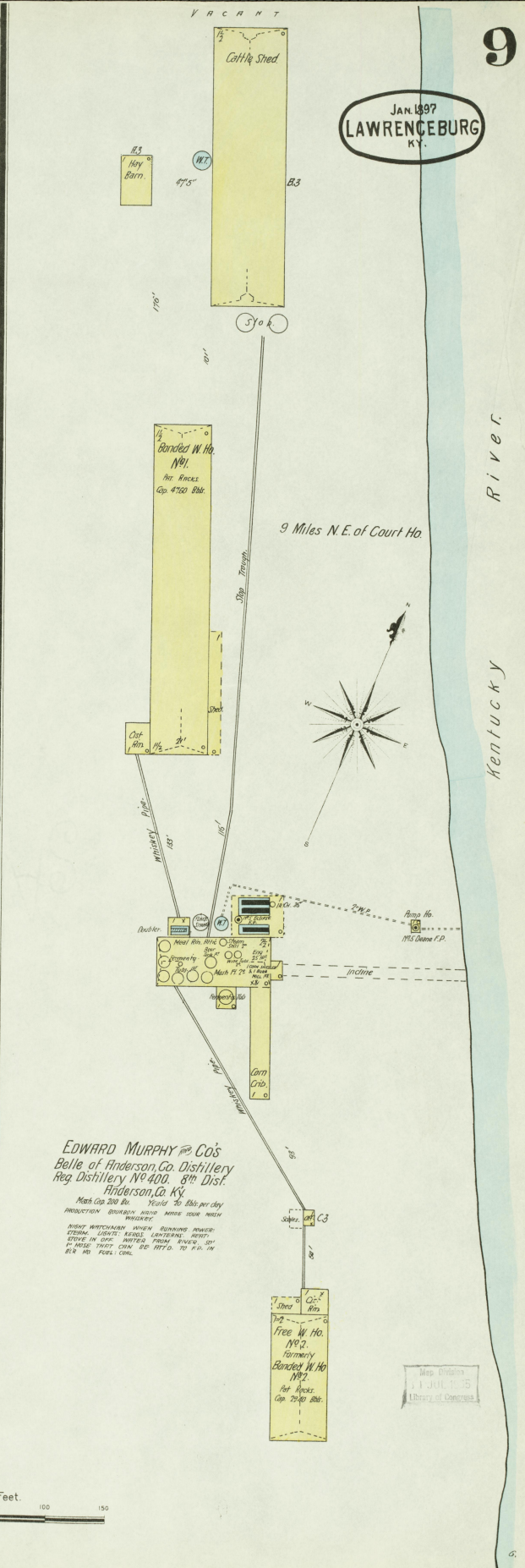
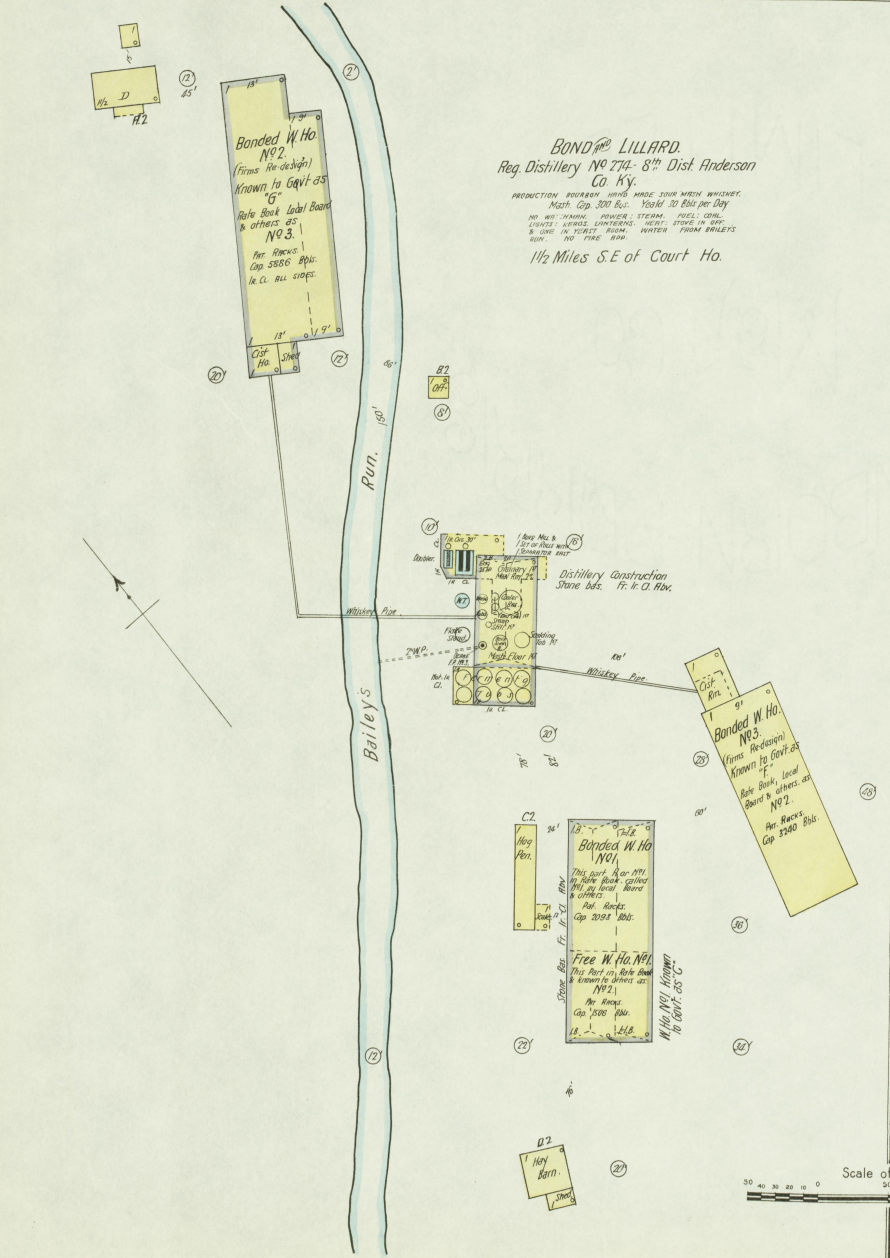
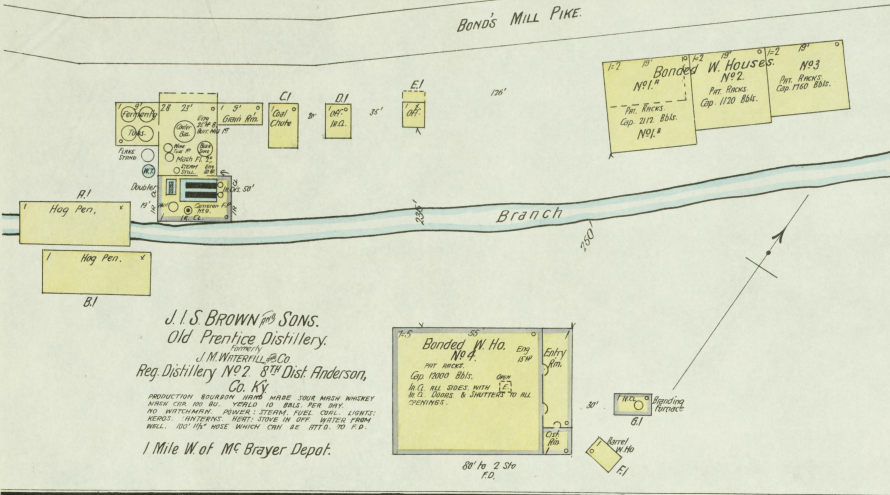
2 1/2 MILES N.W. OF COURT HO.



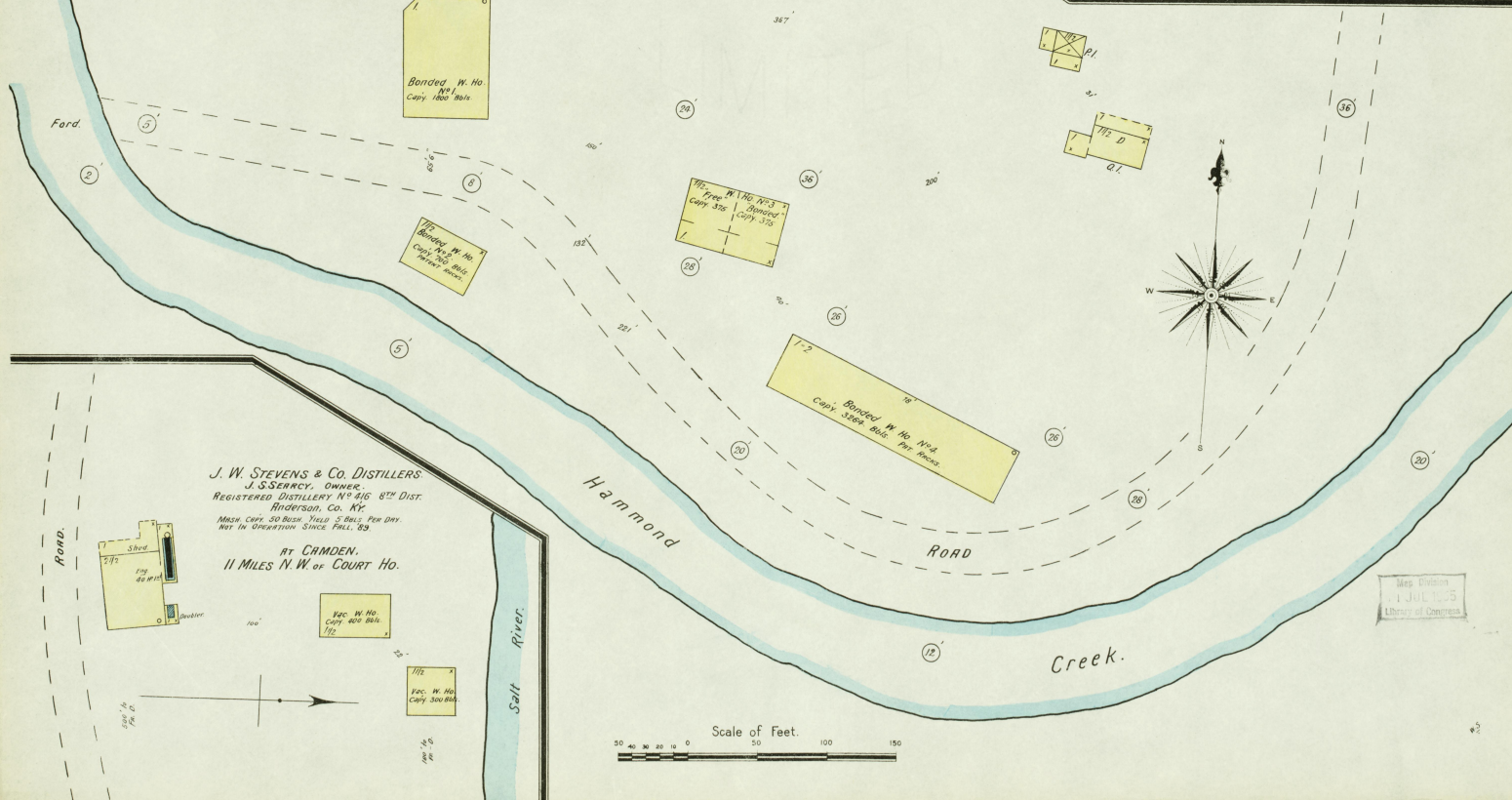
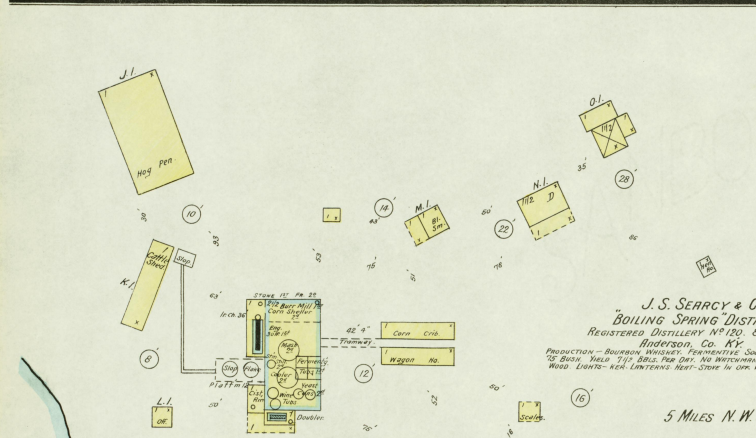
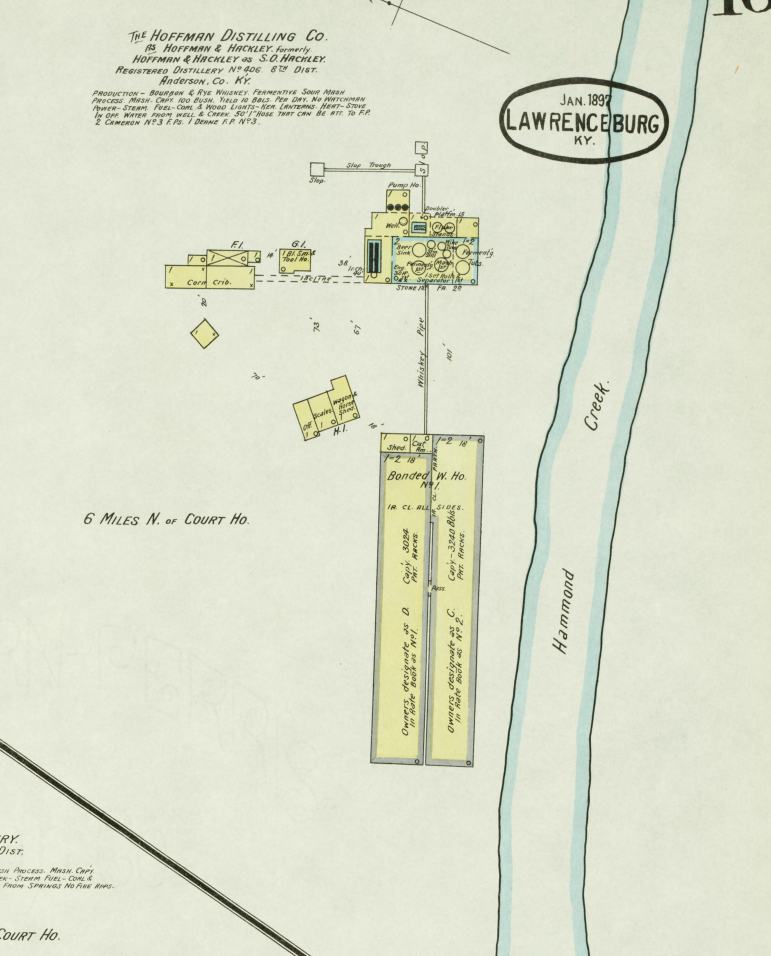
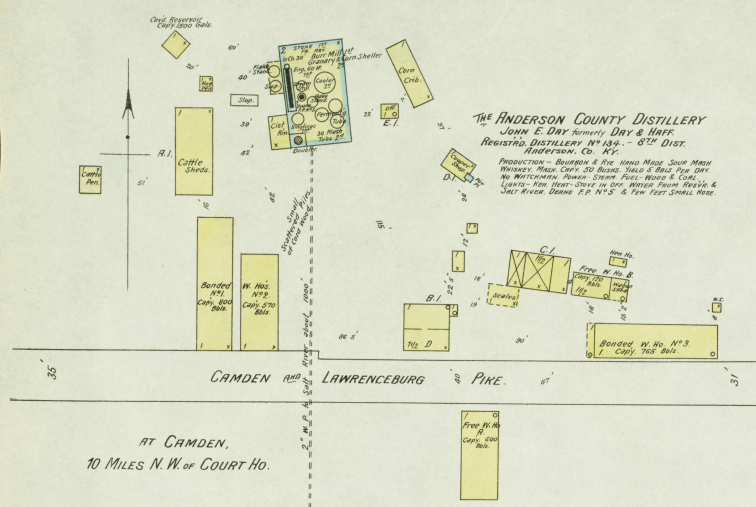
Map Drawn
 31 JUL 11 1897
 Library of Congress

JAN 1897
LAWRENCEBURG
KY.

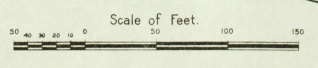
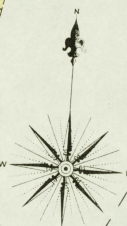
River
Kentucky



Map Entered
JUL 18 1897
Library of Congress



JAN. 1897
LAWRENCEBURG
KY.



Map drawn
JULY 1895
Library of Congress