

FEB 1.5 1929

**INCLUDING FARMER**

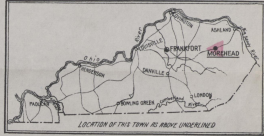
**WATER FACILITIES:**  
Municipality owned water system. Water is pumped from Tripoli Creek by lift pumps. Motor is controlled pump can run full or stop. A discharge pipe with 18 inch diameter pipe runs from Tripoli Creek to the water tower. Water tower has 100,000 gal. capacity. Water is pumped to the water tower by a 4 inch pipe. The water tower has 100,000 gal. capacity. Average daily consumption is 20,000 gal. System installed in 1925.

**FIRE DEPT.:**  
Volunteer - 15 members. 1 Ford truck with 2-30 gal. chemicals. 100' open hose. 1000' 1 1/2" hose of fire line. 1000' 2 1/2" hose in reserve. 1 Ford truck with 25 gal. chemical & 25 gallon hose of Midland Trail Garage. One screen and 100' hose can be operated from there or telephone exchange.

Public lights, etc.



Scale 1,000 feet to one inch  
(Approx.)



**KEY**

STABLE (C) CONCRETE BLOCK  
BUILDINGS COLORED YELLOW AND FRAME  
= RED  
= BLUE  
= BROWN FIRE PROOF  
= GREEN  
= PURPLE

WATER TOWER  
WATER PUMP  
WATER MAIN  
WATER PIPE  
WATER VALVE  
WATER CONNECTION  
WATER METER

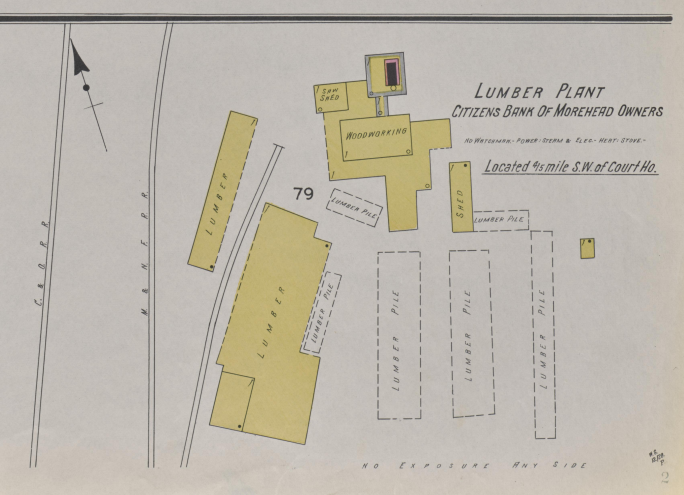
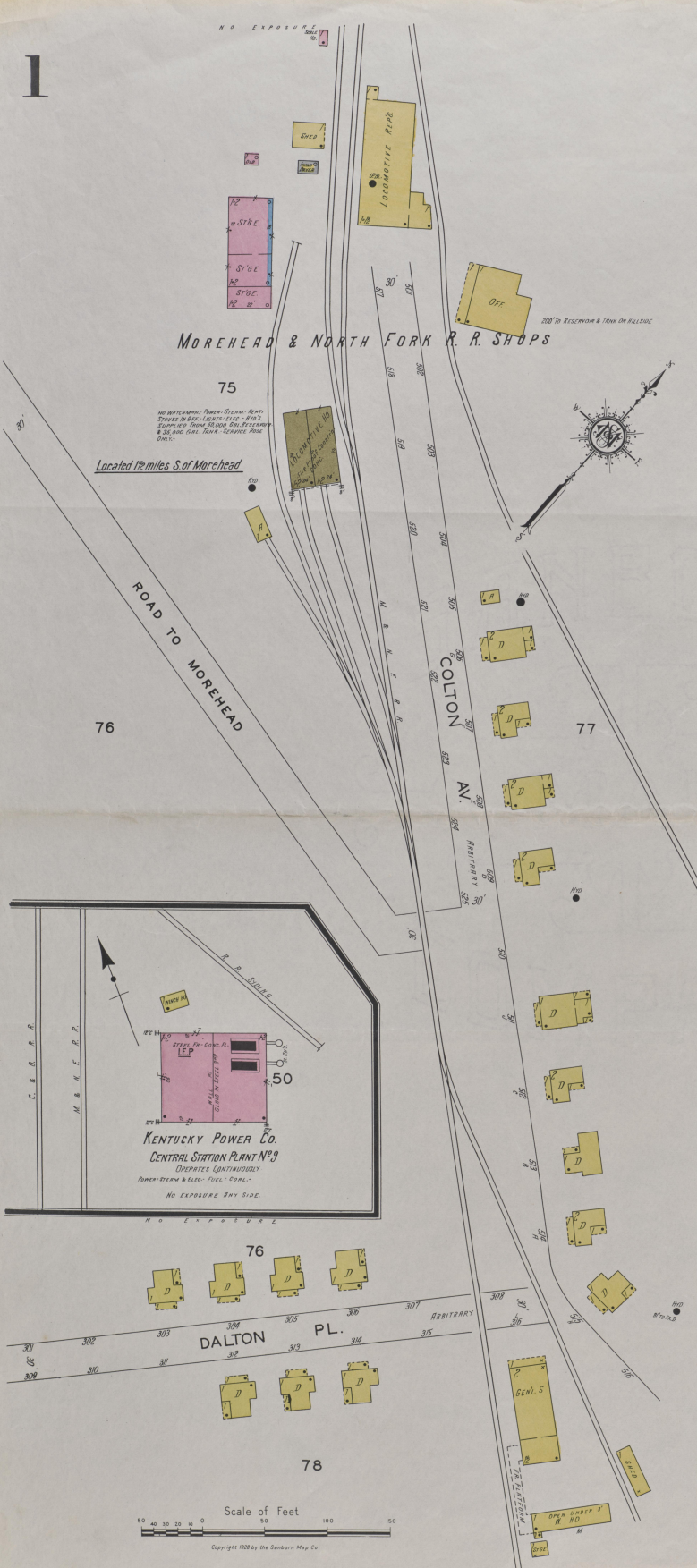
WATER FACILITIES  
WATER TOWER  
WATER PUMP  
WATER MAIN  
WATER PIPE  
WATER VALVE  
WATER CONNECTION  
WATER METER

WATER FACILITIES  
WATER TOWER  
WATER PUMP  
WATER MAIN  
WATER PIPE  
WATER VALVE  
WATER CONNECTION  
WATER METER

**INDEX**

STREETS	INDEX	INDEX
Midland Trail	5	Citizens' Bank of Morehead
Mill, at Farmer	7	Lumber Plant
Normal Ave. N	6	City Hall
North, see Normal Ave.	6	Hotel
Commerical Hotel	5	Commercial Hotel
Consolidated School	5	County Court House and Jail
Fire Department	5	Fire Department
First Christian Church	6	First Christian Church
Flourtime at Fairbanks Ave.	6	Freestone Co. Stone Cutting
Freestone Co. Stone Cutting	7	Jail
Rowan	6	Kentucky Blue Stone Co. Stone Cutting
Second	5	Power Co. Central Station, PT No. 3, 1
Sum	5	Lock-up (old)
Methodist Episcopal Church (South)	5	Midland Trail Garage
Morehead & North Fork R. R. Shops	3	Food and Milling Co. Feed Mill & Co.
Grocery Co. Warehouse	3	Lumber and Coal Co. Ice Plant and Bottling Works
State Normal Teachers' College	6	Water Works, Pump House
Wilson Ave.	6	People's Bank
Hotel	5	Post Office, at Farmer
Public School	7	Public School
Rowan County Freestone Co. Stone Cutting	7	News Printing
Salist's Church, The	5	Standard Oil Co. Warehouses
Standard Oil Co. Warehouses	5	C. & O. R. R. Depot, at Farmer
Christian Church	7	Depots
Van Sant, R. C., Saw Mill and Lumber Yards	7	

NOTE.—House Numbers given are arbitrary.



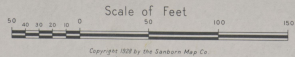
2



(3867)

2

Nov. 1928  
MOREHEAD  
KY.



3

6

3867

Nov. 1928  
**MOREHEAD**  
KY.



4

Nov 1928  
MOREHEAD  
KY.

4

FRONTING ON 2ND ST.

44

FLEEMING AV.

SUN

46  
(9)

DANIELS AV.

36  
(8)

35  
(6)

BAYS AV. (ALLEY C)

WILSON AV.

MAIN

49  
(10)

BRADLEY AV.

36  
(8)

THE SAINTS CHURCH  
HEATY FORNACE  
LIGHT & ELEC.

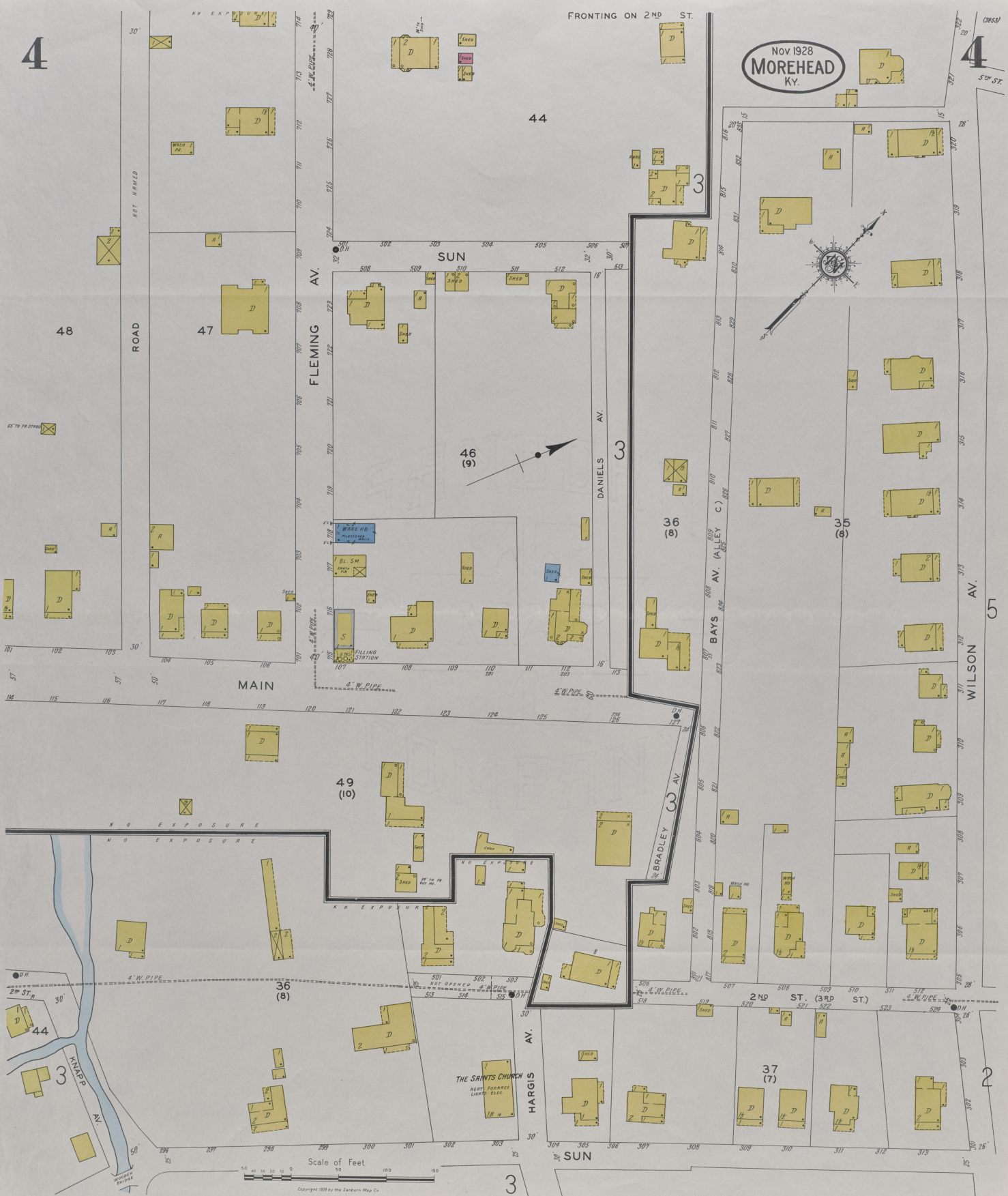
HARGIS AV.

37  
(7)

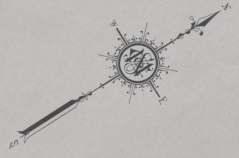
SUN

Scale of Feet

Copyright 1928 by the Sanborn Map Co.



Nov. 1928  
**MOREHEAD**  
Ky.



MIDLAND TRAIL  
STATION OF C. & O. R.R.

**THE KENTUCKY BLUE STONE CO. INC.**  
HEAT, STOVES, LIGHTS BONE, POWER, STEAM

Located 4 Miles S.W. of Morehead

NO EXPOSURE ANY SIDE



6



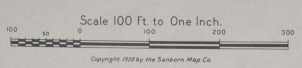
MOREHEAD STATE NORMAL TEACHERS COLLEGE

ADMINISTRATION BUILDING

RALEIGH YOUNG HALL

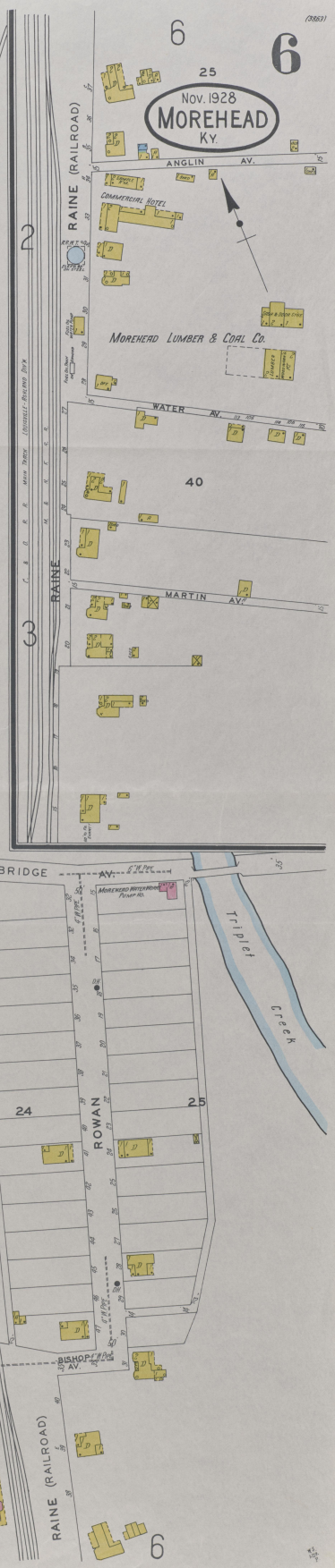
ROWAN COUNTY COURT HD.

MOREHEAD ICE & BOTTLING CO. INC.



6 25 6

Nov. 1928  
MOREHEAD  
KY.



COMMERCIAL HOTEL

MOREHEAD LUMBER & COAL CO.

ROWAN

BISHOP'S HALL

7  
NO EXPOSURE  
FARMER

FARMER  
Located 8 Miles S.W. of Morehead

Nov. 1928  
MOREHEAD  
Ky.

Water FACILITIES: None  
FIRE DEPT.: None

