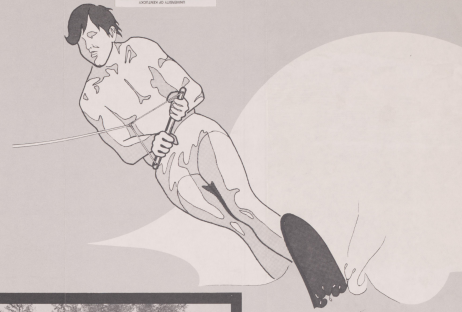


63912 '89 ALB 261 1974
 0 975842 8200 E
 1972 7261

EDGEFIELD - LONG CANE

ranger districts

Sumter National Forest



GAME MANAGEMENT AREAS

The U.S. Forest Service and the South Carolina Wildlife and Marine Resources Department cooperate in the management of wildlife on National Forestland in the State. By working closely together, these two resource management agencies have brought about increased populations of game birds and animals, and hunters are enjoying better and better opportunities for success. National Forest lands provide a large portion of the total area available to the public for hunting in South Carolina.

The Wildlife and Marine Resources Department establishes hunting seasons and bag limits for game, in consultation with the U.S. Forest Service. Habitat management for wildlife is primarily a responsibility of the U.S. Forest Service, but here again the two agencies work together to develop management policies.

OUTDOOR RECREATION OPPORTUNITIES ON THE EDGEFIELD - LONG CANE DISTRICTS

The Long Cane and Edgefield Districts of the Sumter National Forest offer a variety of recreation opportunities to the visitor. Hunting is some of the best in South Carolina. The deer herds are large now, and increasing in size under good management. Turkey hunting is excellent for those experienced in the calling and stalking of this magnificent game bird.

The oldest riding trail in South Carolina is located here; the 28-mile Long Cane trail is a favorite for organized trail rides, some of which are set up as overnight trips. The Trail leads riders through a wide variety of terrain, forest types, and scenery.

Water sports make up a large part of the recreation activities on the two Districts. Two Forest Service lakes, one Corps of Engineers reservoir, and one power reservoir offer opportunities for swimming, boating, water skiing, and fishing. Many Forest visitors enjoy camping and picnicking. Developed campgrounds offer facilities for family-style camping; hunt camps serve the hunters during season.

EDWARDS
 ANDERSON & ASSOCIATES
 515 WEST MAIN
 INDIANAPOLIS, IN 46204

FOR MORE INFORMATION WRITE:

Division Manager
 Forest Service
 P.O. Box 348
 Department 1, C-288A
 Columbia, S.C. 29204
 Forest Supervisor
 Forest Service
 P.O. Box 1000
 Columbia, S.C. 29201 - 10th Floor



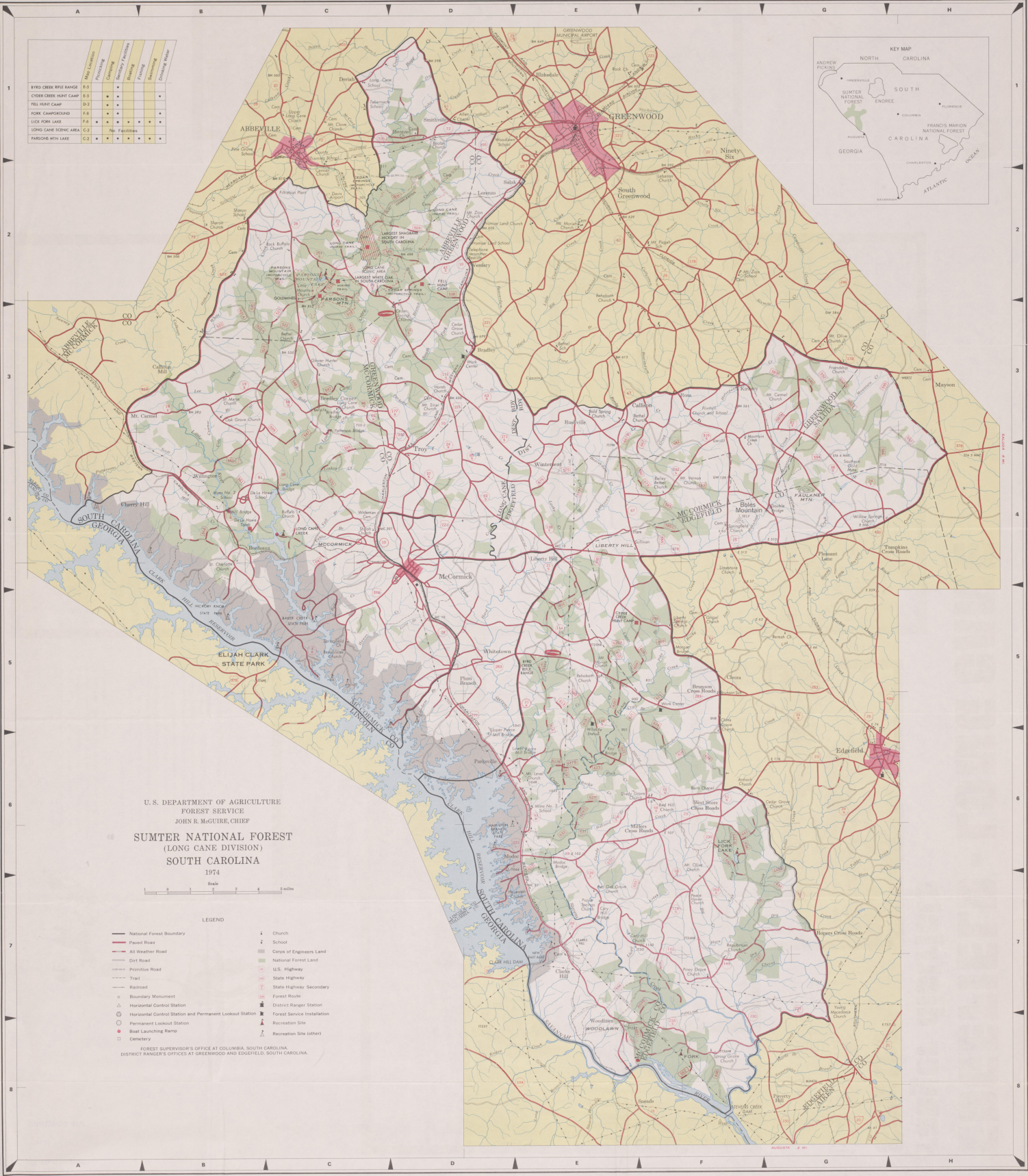
U. S. DEPARTMENT OF AGRICULTURE
 FOREST SERVICE—SOUTHERN REGION
 Bulletin August 23, 1974

The Forest Service, U. S. Department of Agriculture, is dedicated to the principle of multiple use management of the Nation's forest resources for sustained yields of wood, water, forage, wildlife, and recreation. Through forestry research, cooperation with the States and private forest owners, and management of the National Forests and National Game Lands, it strives—to provide increasingly greater service to a growing Nation.

Remember—only YOU
 can prevent forest fires!



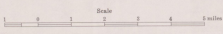
SOUTH CAROLINA



	Maple Campground	Phonix	Stacy's Pavilion	Shelby	Shelby	Shelby	Shelby	Shelby
1	•	•	•	•	•	•	•	•
2	•	•	•	•	•	•	•	•
3	•	•	•	•	•	•	•	•
4	•	•	•	•	•	•	•	•
5	•	•	•	•	•	•	•	•
6	•	•	•	•	•	•	•	•
7	•	•	•	•	•	•	•	•
8	•	•	•	•	•	•	•	•



U. S. DEPARTMENT OF AGRICULTURE
 FOREST SERVICE
 JOHN R. MCGUIRE, CHIEF
 SUMTER NATIONAL FOREST
 (LONG CANE DIVISION)
 SOUTH CAROLINA
 1974



- LEGEND
- National Forest Boundary
 - Paved Road
 - All Weather Road
 - Dirt Road
 - Primitive Road
 - Trail
 - Railroad
 - Boundary Monument
 - Horizontal Control Station
 - Permanent Lookout Station
 - Boat Launching Ramp
 - Cemetery
 - Church
 - School
 - Corps of Engineers Land
 - National Forest Land
 - U.S. Highway
 - State Highway
 - State Highway—Secondary
 - Forest Route
 - District Ranger Station
 - Forest Service Installation
 - Recreation Site
 - Recreation Site (other)

FOREST SUPERVISOR'S OFFICE AT COLUMBIA, SOUTH CAROLINA.
 DISTRICT RANGER'S OFFICES AT GREENWOOD AND EDGEFIELD, SOUTH CAROLINA.