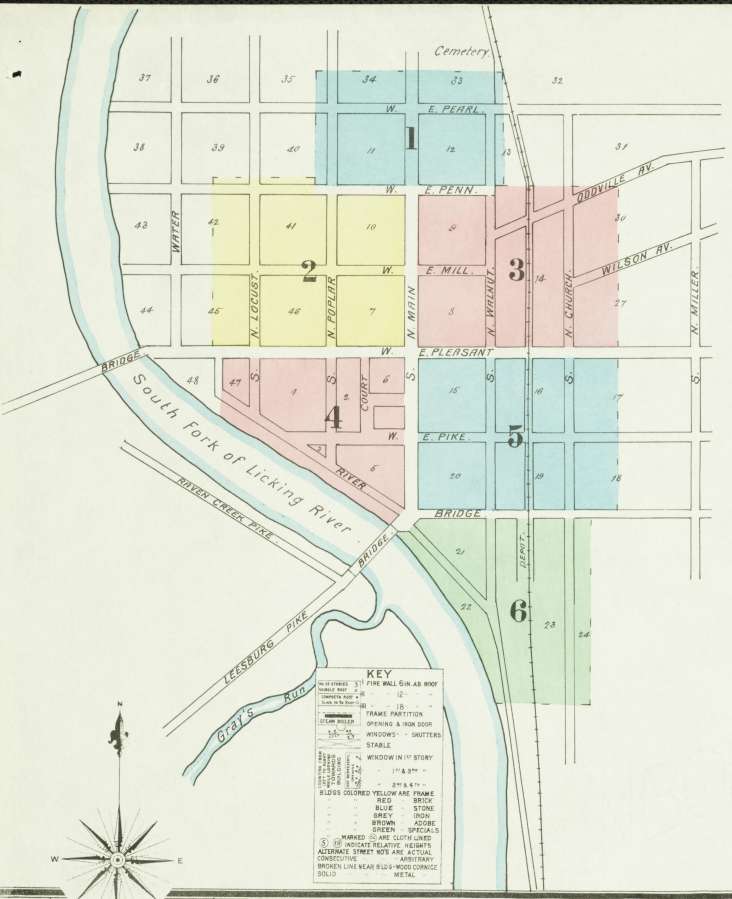


**NOTE.**

WATER WORKS. GRAVITY & DIRECT PRESSURE. WATER PUMPED FROM SOUTH BRANCH OF LICKING RIVER BY 2500 GALLON DUPLEX WHEEL & LOW PRESSURE PUMPS. 2500 GALLON DUPLEX WHEEL & LOW PRESSURE PUMPS. STARTED ON HILL 1/2 MILE SOUTH OF PUMP NO. 2. 2500 GALLON DUPLEX WHEEL & LOW PRESSURE PUMPS. STARTED ON HILL 1/2 MILE SOUTH OF PUMP NO. 2. 2500 GALLON DUPLEX WHEEL & LOW PRESSURE PUMPS. STARTED ON HILL 1/2 MILE SOUTH OF PUMP NO. 2. 2500 GALLON DUPLEX WHEEL & LOW PRESSURE PUMPS. STARTED ON HILL 1/2 MILE SOUTH OF PUMP NO. 2.

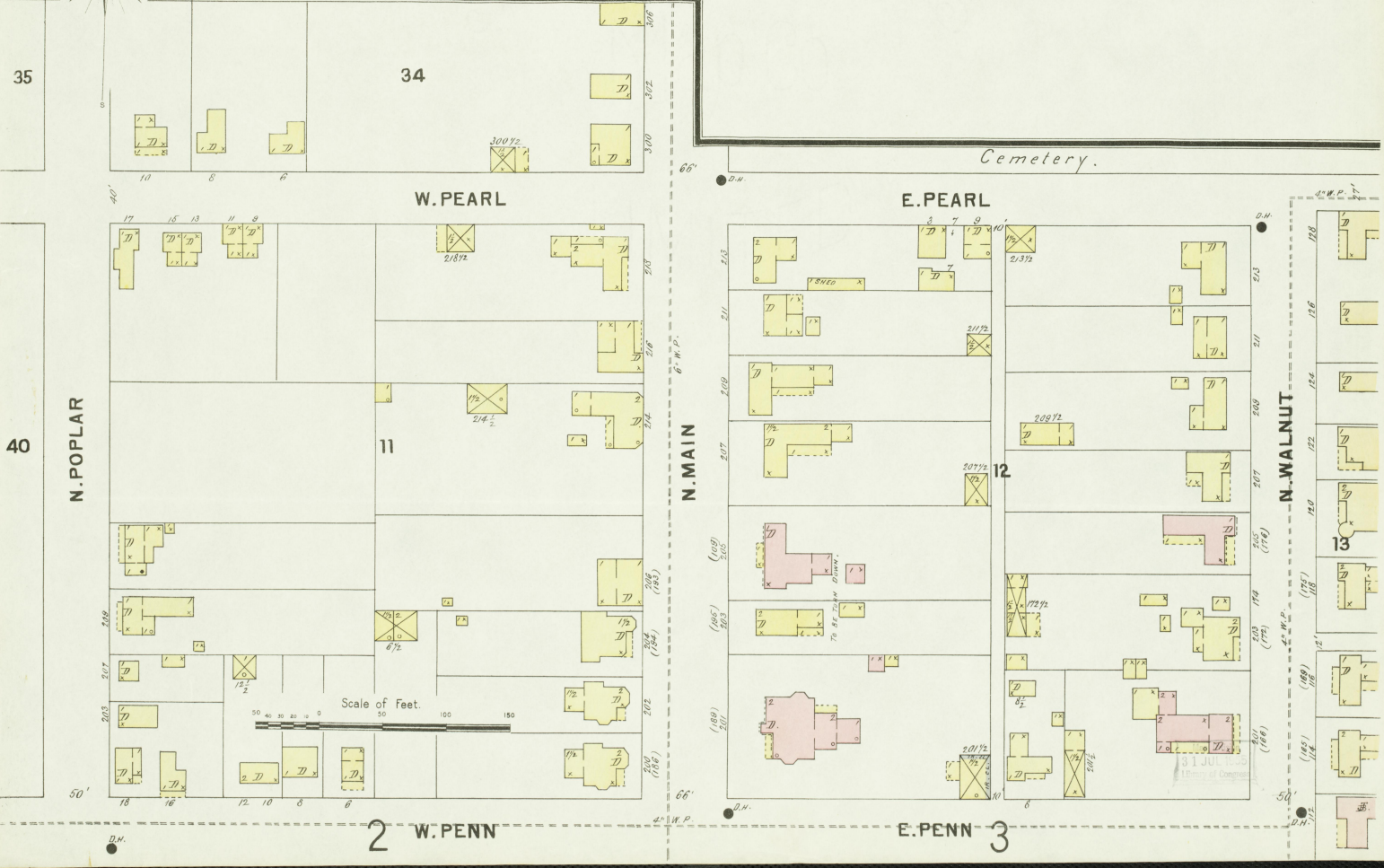


46574 037

**INDEX.**

STREETS.	INDEX.	INDEX.	INDEX.
Bridges	B	Walnut, N.	1-115
Church, N.	C	"	114-213
Court	D	" S.	1-130
Depot	D	Wilson Ave.	200-331
Loeast, N.	L		
Main, N.	M		
Oddville Ave.	O		
Pearl, E.	P		
Penn, N.	P		
Pike, E.	P		
Pleasant, N.	P		
Poplar, N.	P		
River, E.	R		
		Keller, A. Co's Distillery	7
		K. C. R. R. Depot & Stock Yard	6
		Lacy, Buchert, Gerald & Miller, Distillery	8
		Lebus, C. Tobacco & Grain Warehouse	5
		Licking Valley Mills	6
		Megibben Excelsior Co's Distillery	9
		T. J. Co's Distillery	8
		S. Bros. Distillery (formerly)	9
		J. K. Flour Mill	9
		Methodist Episc. Church	5
		Mill Creek Distillery	8
		Mitchell & Webster, Carriage Factory	6
		A. M. Baptist Church	6
		Ashbrook Bros. Distillery (formerly)	7
		F. S.	7
		Barnhard, P. Carriage Works	5
		Boyers Distilling Co.	9
		Central Hotel	6
		Christian Church	3
		Clark, E. E. & Bro. Planing Mill	3
		Colored Church	2
		Commercial Hotel	5
		Cook, C. R. Co's Distillery	4
		County Court House & Jail	4
		Crane, F. G. Distillery	8
		Crescent Milling Co.	5
		Cynthiana Baptist Church	6
		Elect. L. & Artif. Ice Co.	6
		Lumber Co.	5
		Planing Mill	3
		Pump Co's Water Works	6
		Edgewater Distillery	4
		Ellis Hotel	2
		Episcopal Church	3
		Graded City School	5
		Harrison County Lumber Co.	5
		Whalen Coal Co.	5
		Wiglesworth Bros. Co. Distillery	9
		Wohlwunder Bros. Carriage Factory	6

\* Indicates only one side of Street shown.





3

2

JULY 1897  
CYNTHIANA  
KY.

N-MAIN

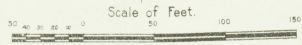
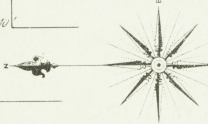
N. POPLAR

N. LOCUST

W. PENN

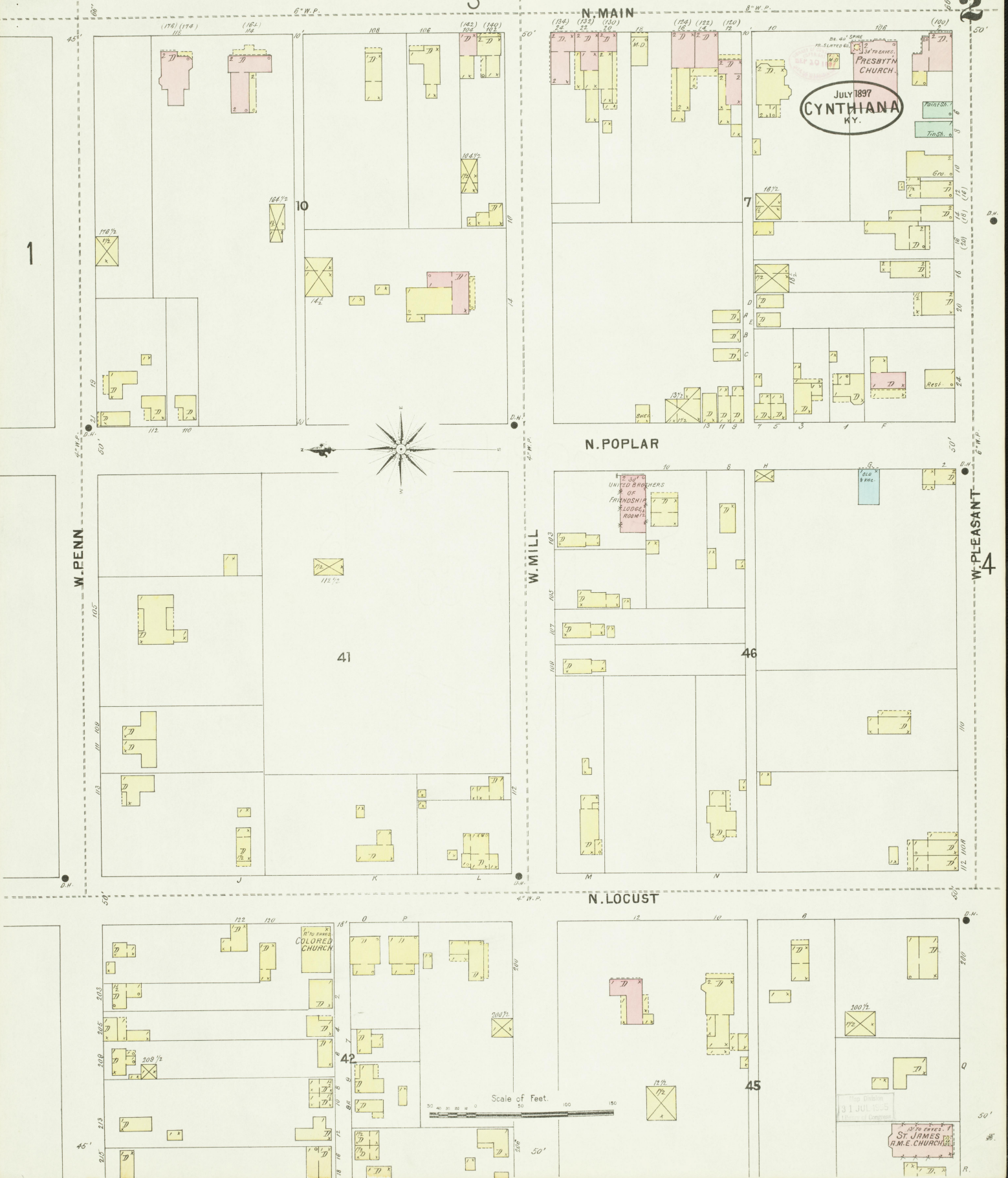
W. MILL

W. PLEASANT



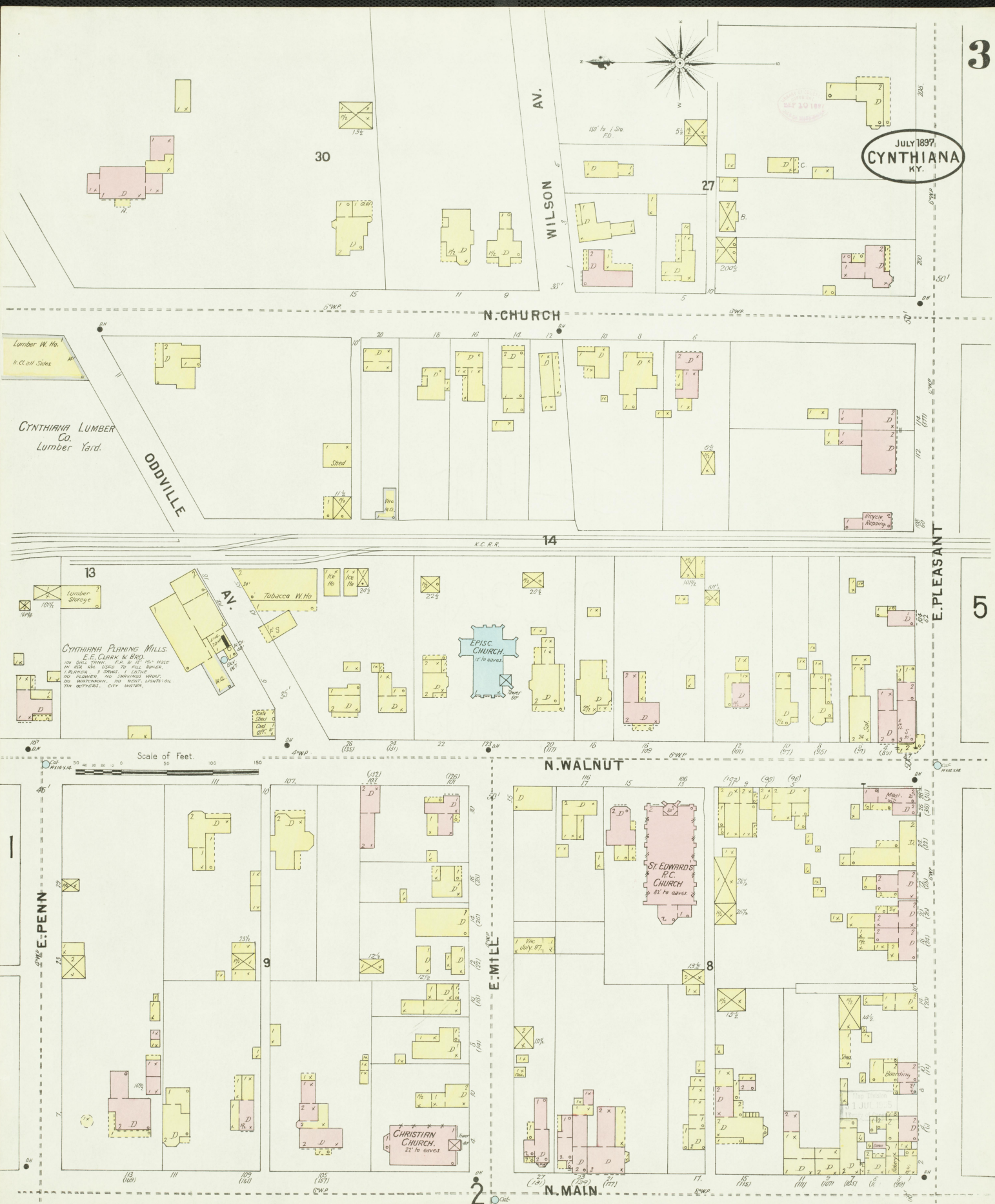
COLORED CHURCH

ST. JAMES  
M.E. CHURCH





JULY 1897  
CYNTHIANA  
KY.





5

4

JULY 1897  
CYNTHIANA  
KY.

6

S. MAIN

COURT

S. POPLAR

W. PLEASANT

W. PIKE

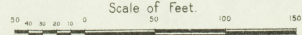
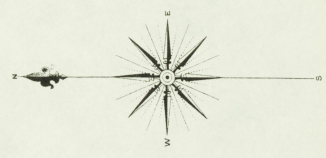
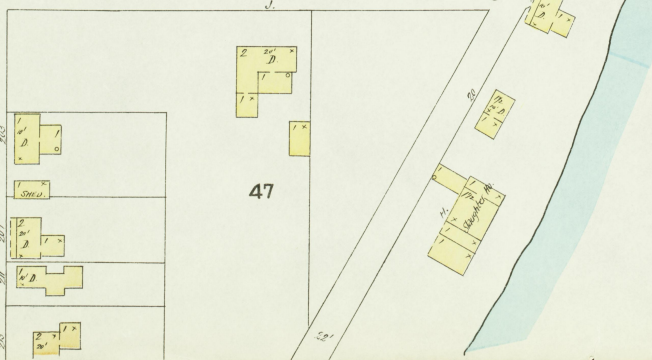
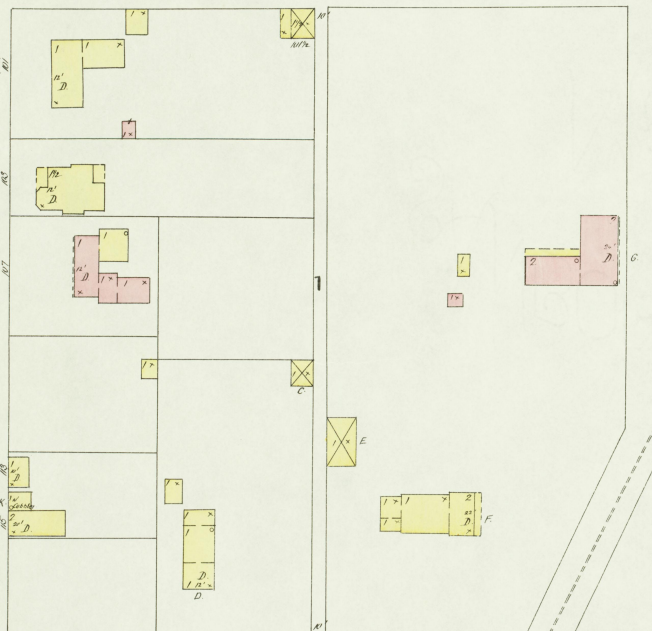
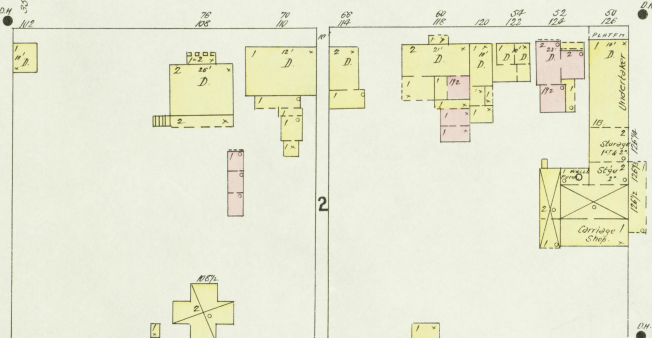
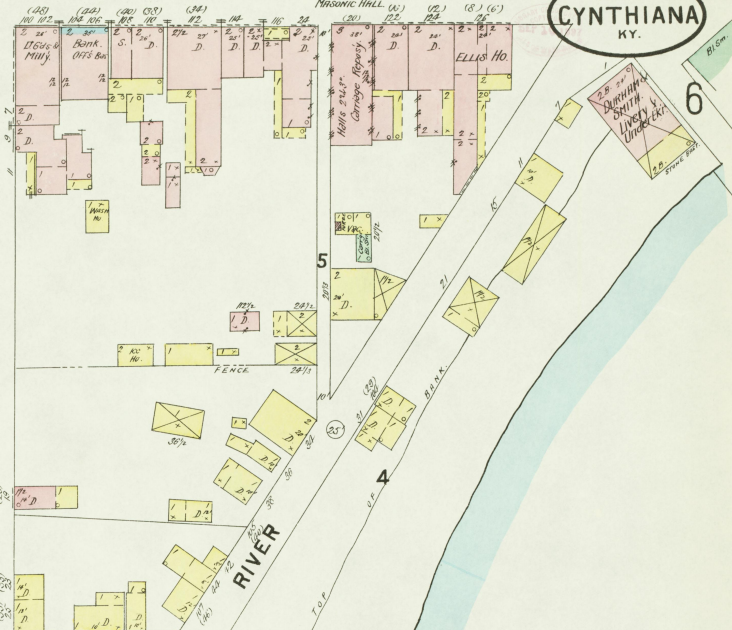
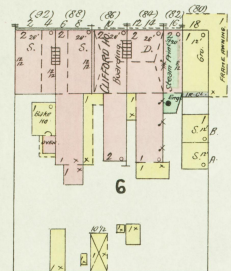
South Fork of Licking River

S. LOCUST

47

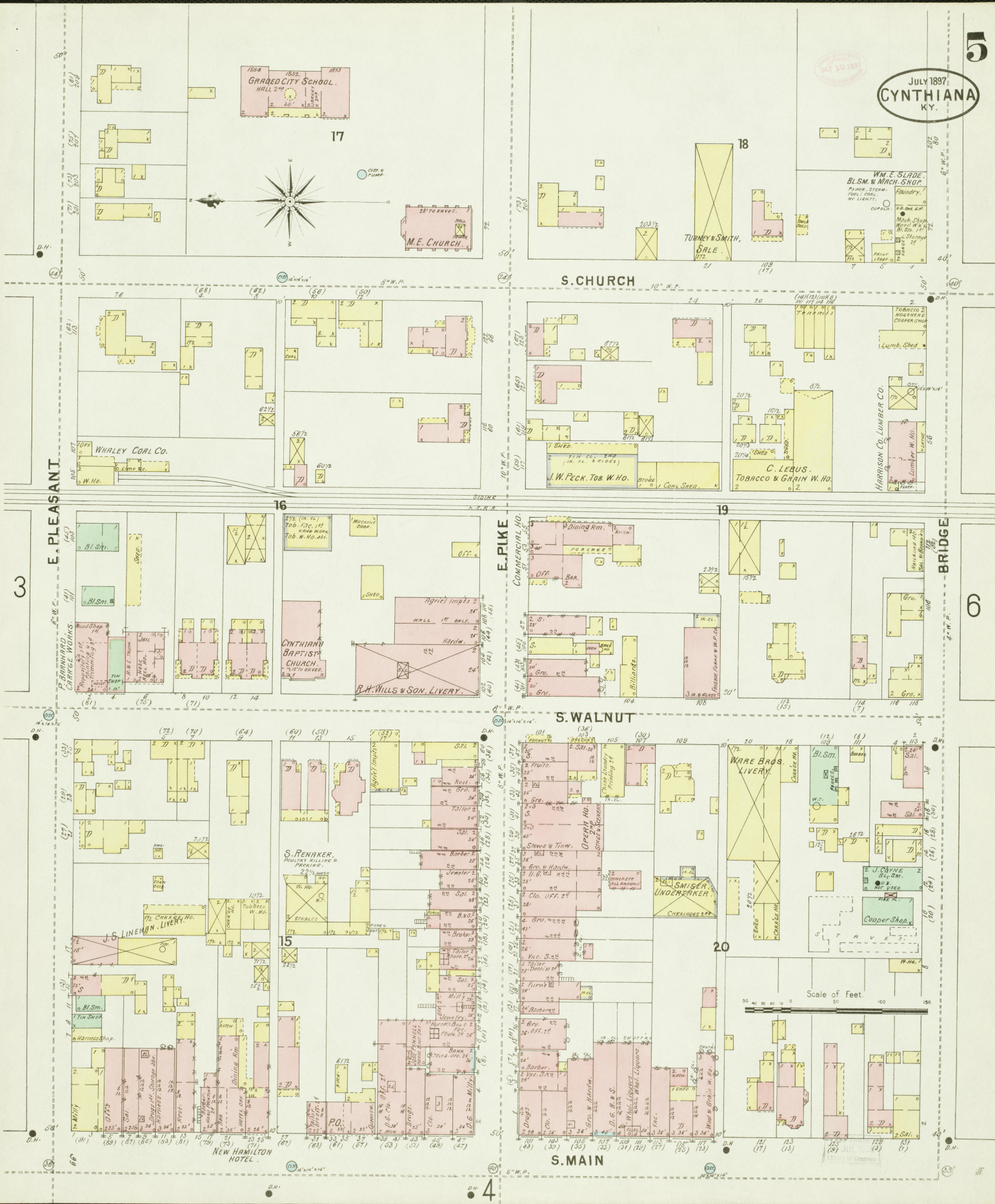
Scale of Feet.

31 JUL 1895  
Thomas J. Adams





JULY 1897  
CYNTHIANA  
KY.



E. PLEASANT

3

4

S. CHURCH

E. PIKE

S. WALNUT

S. MAIN

BRIDGE

6

1894 1892 1893  
GRADED CITY SCHOOL  
HALL 2 1/2

17

2870 BRICKS  
M.E. CHURCH

18

TURNER & SMITH,  
SALE

WM. E. SLADE  
BLSM. & MACH. SHOP  
Foundry  
PAPER, STEAM,  
PAINT, OIL,  
NO LIGHT.

WHOLEY COAL CO.

J.W. PECK, TOB. W.H.O.

C. LEBUS,  
TOBACCO & GRAIN W.H.O.

HARRISON CO. LUMBER CO.  
Lumber W.H.O.

CYNTHIANA BAPTIST CHURCH  
R.H. WILLS & SON, LIVERY

COMMERCIAL HO.  
Dining Rm.  
PARLOR  
OFF.  
BAR

WARE BROS. LIVERY

SMIGER  
UNDERPAKER

S. RENAKER,  
POULTRY KILLING &  
PACKING

J. COVINE  
COOPER SHOP

J.S. LINEB.  
LIVERY

Scale of Feet  
0 50 100 150

NEW HAMILTON HOTEL



SEP 20 1897

24

S. CHURCH

Common

R. R. STOCK YARDS

23

120' TO PR. CORNER SHOWN 25' x 40'  
1/2 MILE TO WATKINS FERRY RD.

Formerly A. Formerly B. Formerly C.  
**WARE HOUSE**  
No. 6 A  
Cap. 100000 lbs.  
**BONDED W. H. NO. 6 B**  
Cap. 100000 lbs.  
WATKINSON CO.

**FREIGHT HO.**

**DEPOT**

**Crescent Milling Co.**  
**Crescent Mills.**

WENT WATKINSON CLEVELAND CREEK 3 STATIONS.  
NO. 1000. BARRELS OF WHEAT & BUCKWHEAT IN  
20' 1/4 RITS. CRYSTALLINE OR GRANULAR GRAIN  
IN 20' 1/4 RITS. PURE CUM. LIGHT ELECTRIC.  
15' 1 FOUR FLOOR 120000 BUSHELS CORN 120000 POUNDS.  
1 STAMP CORN MILL 1000 POUNDS.  
20' 6 CORN CRACKER 1000 POUNDS. 1 CORN MILL 250 REV.  
1 CRACKER SHIFTER 1000 POUNDS.  
1 CORN CRACKER 250 REV. 1 CORN CRACKER REEL.  
20' 20' 2 STAMP FLOURING MILLERS 1000 POUNDS.  
1 CRACKER SHIFTER 1000 POUNDS. 1 CORN CRACKER 250 REV.  
1 CORN CRACKER 250 REV. 1 CORN CRACKER 250 REV.  
1 CORN CRACKER 250 REV. 1 CORN CRACKER 250 REV.

**Registered Distillery No. 6.**  
Product Rye & Bourbon  
Whiskey

MASH 100 Bush per Day. Yield per 100 Bush per Day  
Run 6 Months per Year.

WENT WATKINSON CLEVELAND CREEK 3 STATIONS.  
LIGHT LANTERN. MOST SURE FUEL OIL.  
2. ONE HOUR OPERATIONAL. SINGLE BUCKETS OF WATER.  
THERMOMETER. 200 POUNDS LIT. FUEL. 1 STAMP IN 2000  
600 & 1 IN DISTILLERY. SUFFICIENT ON WATKINSON TONEL.  
ONE SIDE ONLY.

**MICHELL & MEISTER**  
**CARRIAGE FAC.**  
No. 1000. WATKINSON TONEL. 1000 POUNDS.

**CYNTHIANA ELECTRIC LIGHT**  
**ICE COMPANY**

**Licking Valley Mills.**  
**Wheats, Corn & Co.**

**Flour Mill**

**RIVER**

22

South Fork of Licking River

Licking River

South Fork of Licking River

**CYNTHIANA PUMP HO.**

REG. DISCOUNTED BY PUMP  
SEA TYLE CASE.

Scale of Feet. 0 50 100 150

4

W.P.

W. 4. 1







JULY 1897  
CYNTHIANA  
KY.

1 1/2 MILES W. OF LAIR STATION & 4 1/2 MILES S.W. OF CYNTHIANA.

1 1/2 MILES N.W. OF CYNTHIANA, KY.  
IN TOWN OF BERRY KY.

**THE T.J. MEGIBBEN COS' EDgewater DISTILLERY.**  
Regis. Distillery N<sup>o</sup> 1, 6<sup>th</sup> Dist. Harrison Co. Ky.  
Formerly Known as T.J. MEGIBBEN BROS DISTILLERY.

Production: Bourbon & Rye Whiskey.  
Power Made Sour Mash.  
Capty. 800 Bush. per Day. Produce 20 Hls per Day.  
Run Daily 6 Months per Year.

NEAR WATERMAN & COOK, 3 STATIONS.  
POWER: STEAM, FUEL: COAL.  
LIGHTS: LAMP IN LANTERNS.  
WATER: CISTERN IN CELLAR.  
ALL BUILDINGS: ROOF LEAKS IN ALL GOOD REPAIR.  
FROM BUREAU: SHIPPERS TO WARE HOUSING & S.  
FROM CASH SHIPPERS TO ALL SHIPPERS IN  
WARD HOUSING & STEAM DOUBLER.

**F.G. CRAIG.**  
Regis. Distillery N<sup>o</sup> 77, 6<sup>th</sup> Dist. Harrison Co. Ky.

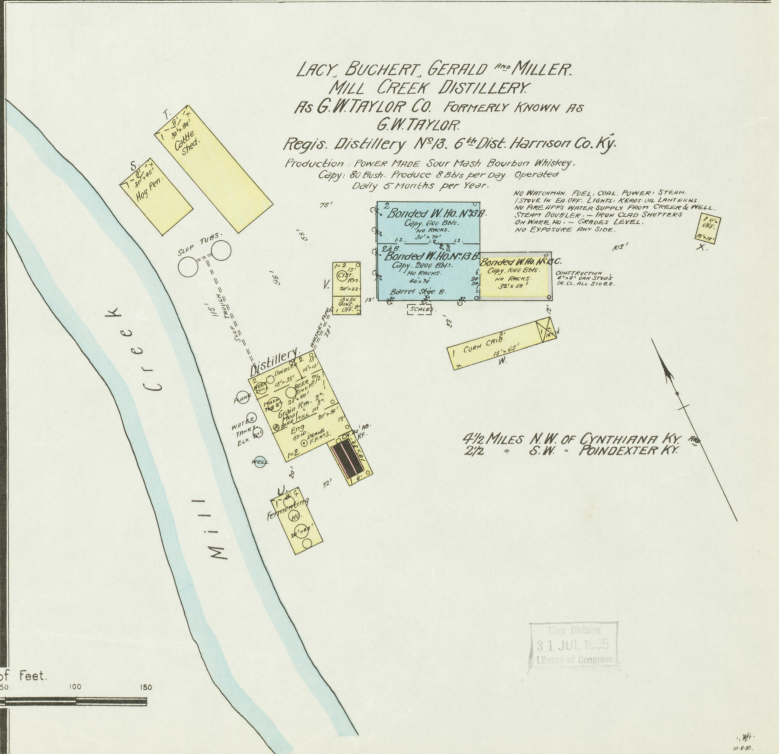
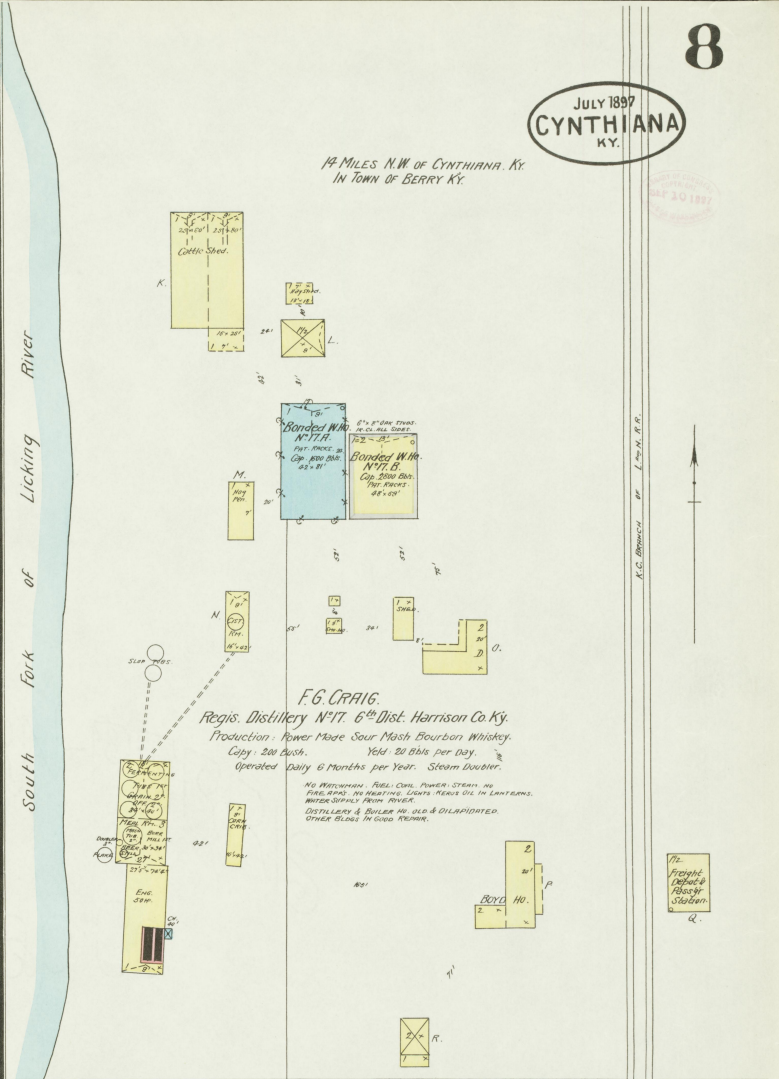
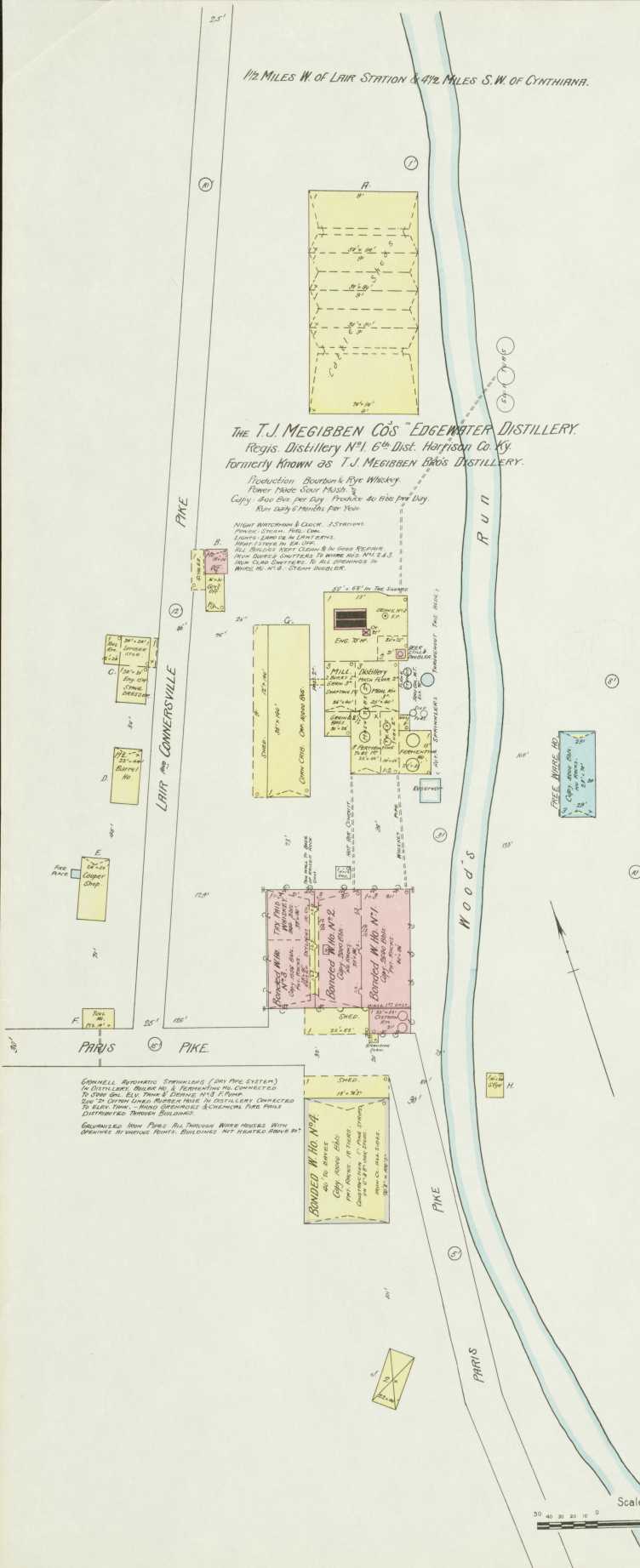
Production: Power Made Sour Mash Bourbon Whiskey.  
Capty. 200 Bush. Yield 20 Hls per Day.  
Operated Daily 6 Months per Year. Steam Doublor.

NO MATCHING. FUEL: COAL. POWER: STEAM. NO  
FIRE ARMS. IN MATCHING LIGHTS: MERCS OIL IN LANTERNS.  
WATER: CISTERN FROM RIVER.  
DISTILLERY & BULKER HOUSING & OIL-SPILLER  
OTHER BLDGS. IN GOOD REPAIR.

**LACY, BUCHERT, GERALD & MILLER.**  
MILL CREEK DISTILLERY  
AS G.W. TAYLOR CO. FORMERLY KNOWN AS  
G.W. TAYLOR.

Regis. Distillery N<sup>o</sup> 8, 6<sup>th</sup> Dist. Harrison Co. Ky.  
Production: Power Made Sour Mash Bourbon Whiskey.  
Capty. & Bush. Produce 8 Hls per Day. Operated  
Daily 5 Months per Year.

NO MATCHING. FUEL: COAL. POWER: STEAM.  
LIGHTS: IN ED. 1907. LANTERNS IN LANTERNS.  
NO FIRE ARMS. WATER: CISTERN FROM WELL.  
STEAM DOUBLER - FROM CASH SHIPPERS  
ON WARE HOUSING - CONCRETE LEVEL.  
NO EXPOSURE ANY SIDE.

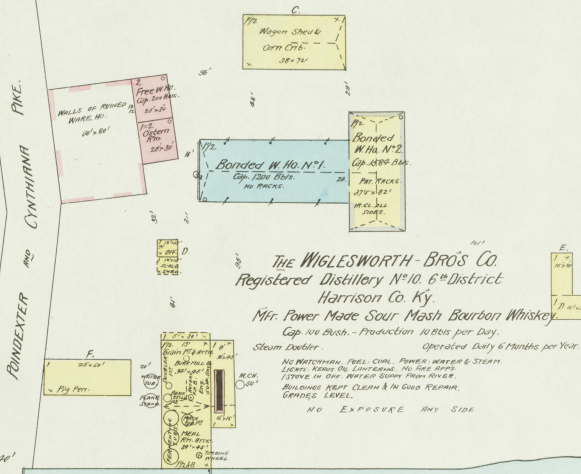


Scale of Feet  
0 50 100 150

Top Division  
31 JUL 1895  
Division of Commerce



4 MILES N.W. OF CYNTHIANA, KY AND  
1 MILE E. OF PINDEXER STATION.



**The WIGLESWORTH-BROS. CO.**  
Registered Distillery No. 10, 6<sup>th</sup> District  
Harrison Co. Ky.  
Mfg. Power Made Sour Mash Bourbon Whiskey  
Cap. 100 Bush. - Production 10000 per Day  
Steam Cooker. Operated Daily 6 Months per Year.

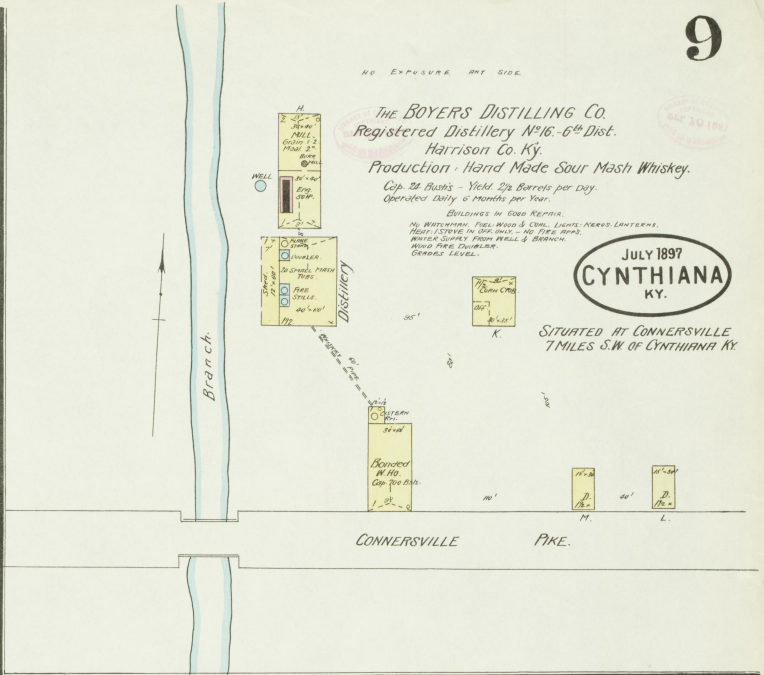
NO MATCHING, FEEL COOL, POWER, WATER & STEAM  
LIGHTS, AHEAD OF LIGHTING. NO FIRE ALARMS  
LIVING IN ONE, PROPER SUPPLY FROM RIVER.  
BUILDINGS KEPT CLEAN & IN GOOD REPAIR.  
GRADE LEVEL.

NO EXPOSURE ANY SIDE

**The BOYERS DISTILLING CO.**  
Registered Distillery No. 16, 6<sup>th</sup> Dist.  
Harrison Co. Ky.  
Production - Hand Made Sour Mash Whiskey.  
Cap. 25 Bush. - Yield 200 Barrels per Day.  
Operated Daily 6 Months per Year.

JULY 1897  
**CYNTHIANA**  
KY.

SITUATED AT CONNERSVILLE  
7 MILES S.W. OF CYNTHIANA KY.



BUILDINGS IN GOOD REPAIR.  
NO MATCHING, FEEL WOOD & COOL, LIGHTS, AHEAD OF LIGHTING.  
WATER SUPPLY FROM RIVER & BRANCH.  
HAND MADE SOUR MASH & BURNED  
GRADES LEVEL.

NO EXPOSURE ANY SIDE

4 MILES S. OF CYNTHIANA, KY AND  
1/2 MILE E. OF LAIR KY.

**The G. R. SHARP CO.**  
Registered Distillery No. 19, 6<sup>th</sup> Dist.  
Harrison Co. Ky.  
Mfg. Power Made Sour Mash Bourbon.  
Cap. 500 Bush. - Production 50 Barrels per Day.  
NOT OPERATED SINCE 1881. STEAM UNDER DUNKLER.

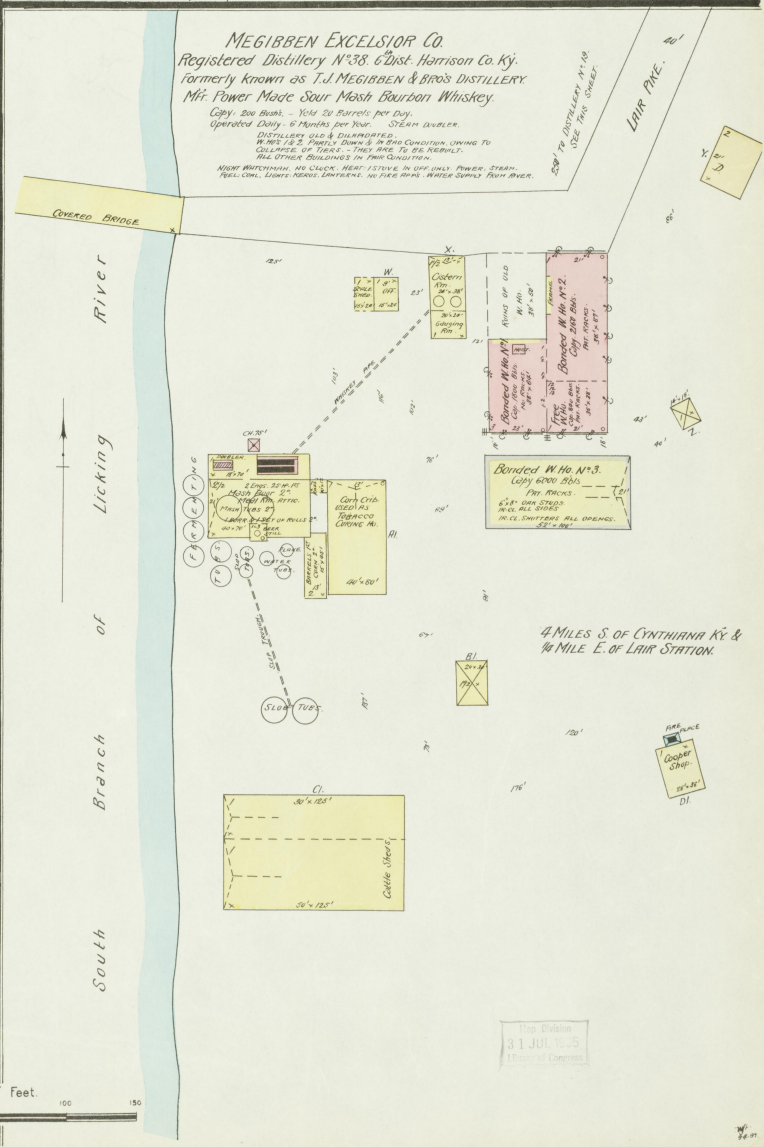
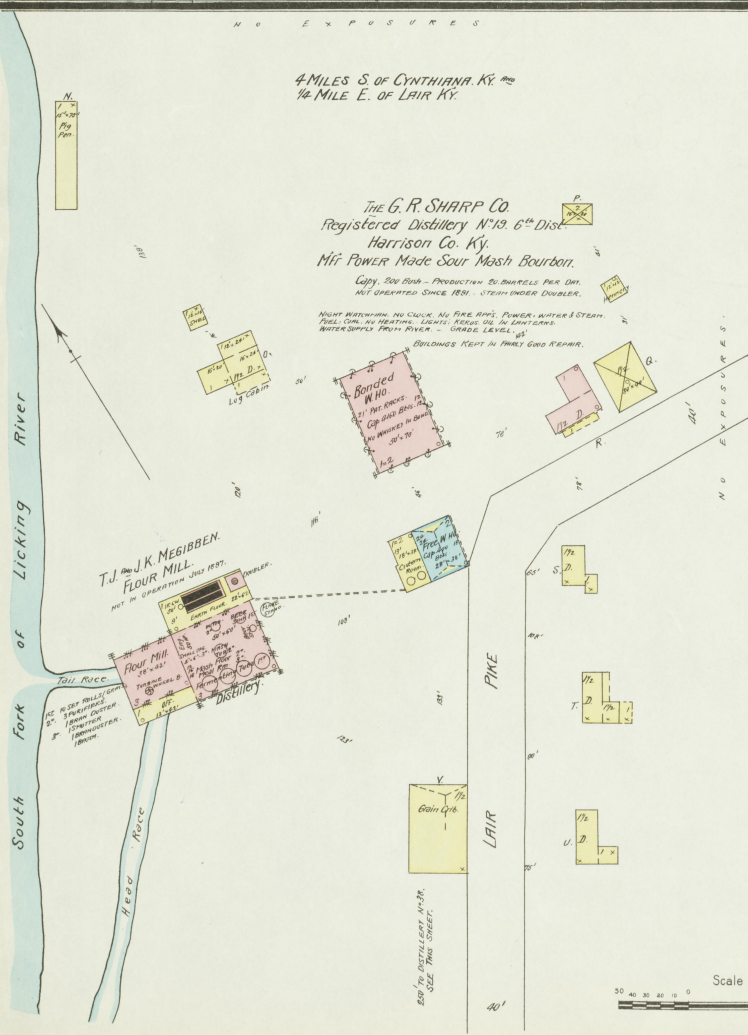
NO MATCHING, NO CLOCK, NO FIRE ALARMS, POWER, WATER & STEAM.  
FEEL COOL, NO HEATING, LIGHTS, AHEAD OF LIGHTING.  
WATER SUPPLY FROM RIVER - GRADE LEVEL.

BUILDINGS KEPT IN FAIRLY GOOD REPAIR.

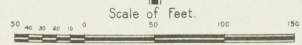
**MEGIBBEN EXCELSIOR CO.**  
Registered Distillery No. 38, 6<sup>th</sup> Dist. Harrison Co. Ky.  
Formerly known as T. J. MEGIBBEN & BROS. DISTILLERY  
Mfg. Power Made Sour Mash Bourbon Whiskey.  
Cap. 200 Bush. - Yield 20 Barrels per Day.  
Operated Daily 6 Months per Year. STEAM UNDER DUNKLER.

DISTILLERY USE & DUNKLERIZED.  
WATER IS 2.5 FEETLY DOWN & IN BRILL CONDITION, SUITING TO  
CULTURE OF YEAST - THIS MADE TO BE REPEATED  
ALL OTHER BUILDINGS IN FAIR CONDITION.

NO MATCHING, NO CLOCK, HEAT - STORED IN ONE ONLY POWER, STEAM.  
FEEL COOL, LIGHTS, AHEAD OF LIGHTING. NO FIRE ALARMS, WATER SUPPLY FROM RIVER.



4 MILES S. OF CYNTHIANA KY &  
1/2 MILE E. OF LAIR STATION.



Map Edition  
31 JUL 1895  
1/2000 of Original