

FEB 25 1915

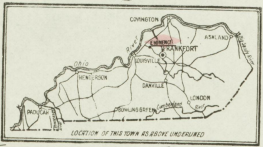
© G. F. 29100

**WATER FACILITIES.**  
The large tanks - seven special fire tanks & six water cisterns - capacity filled by engine from ponds.

**FIRE DEPT.**  
One company, eleven men, seven on duty at engine house at night. - Waterous obtain fire engine held in reserve, used whenever hose needed - carrying 1000 ft. K. H. hose, four wheeled ladders, truck ladders, saw, axes, and all tools. One Howe 40 H. gasolene fire pump capacity 350 gals. per min. fire alarm given by telephone, sounded by bell by fire engine. - Grades - about level - no fire limits.

**KEY**

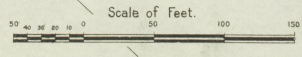
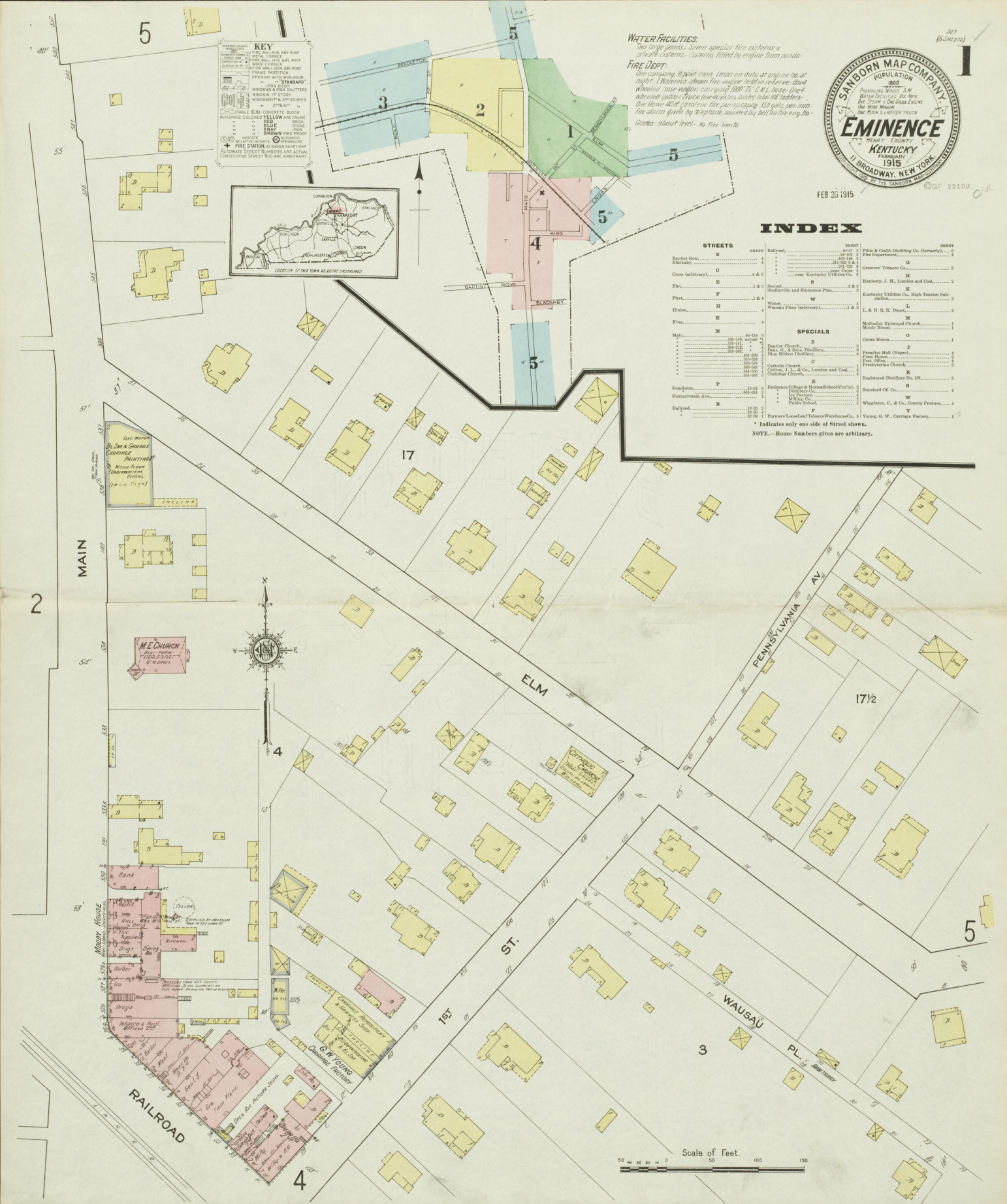
1	FRAMES FOR ASB. ROOF
2	FRAMES FOR ASB. ROOF
3	FRAMES FOR ASB. ROOF
4	FRAMES FOR ASB. ROOF
5	FRAMES FOR ASB. ROOF
6	FRAMES FOR ASB. ROOF
7	FRAMES FOR ASB. ROOF
8	FRAMES FOR ASB. ROOF
9	FRAMES FOR ASB. ROOF
10	FRAMES FOR ASB. ROOF
11	FRAMES FOR ASB. ROOF
12	FRAMES FOR ASB. ROOF
13	FRAMES FOR ASB. ROOF
14	FRAMES FOR ASB. ROOF
15	FRAMES FOR ASB. ROOF
16	FRAMES FOR ASB. ROOF
17	FRAMES FOR ASB. ROOF
18	FRAMES FOR ASB. ROOF
19	FRAMES FOR ASB. ROOF
20	FRAMES FOR ASB. ROOF
21	FRAMES FOR ASB. ROOF
22	FRAMES FOR ASB. ROOF
23	FRAMES FOR ASB. ROOF
24	FRAMES FOR ASB. ROOF
25	FRAMES FOR ASB. ROOF
26	FRAMES FOR ASB. ROOF
27	FRAMES FOR ASB. ROOF
28	FRAMES FOR ASB. ROOF
29	FRAMES FOR ASB. ROOF
30	FRAMES FOR ASB. ROOF
31	FRAMES FOR ASB. ROOF
32	FRAMES FOR ASB. ROOF
33	FRAMES FOR ASB. ROOF
34	FRAMES FOR ASB. ROOF
35	FRAMES FOR ASB. ROOF
36	FRAMES FOR ASB. ROOF
37	FRAMES FOR ASB. ROOF
38	FRAMES FOR ASB. ROOF
39	FRAMES FOR ASB. ROOF
40	FRAMES FOR ASB. ROOF
41	FRAMES FOR ASB. ROOF
42	FRAMES FOR ASB. ROOF
43	FRAMES FOR ASB. ROOF
44	FRAMES FOR ASB. ROOF
45	FRAMES FOR ASB. ROOF
46	FRAMES FOR ASB. ROOF
47	FRAMES FOR ASB. ROOF
48	FRAMES FOR ASB. ROOF
49	FRAMES FOR ASB. ROOF
50	FRAMES FOR ASB. ROOF
51	FRAMES FOR ASB. ROOF
52	FRAMES FOR ASB. ROOF
53	FRAMES FOR ASB. ROOF
54	FRAMES FOR ASB. ROOF
55	FRAMES FOR ASB. ROOF
56	FRAMES FOR ASB. ROOF
57	FRAMES FOR ASB. ROOF
58	FRAMES FOR ASB. ROOF
59	FRAMES FOR ASB. ROOF
60	FRAMES FOR ASB. ROOF
61	FRAMES FOR ASB. ROOF
62	FRAMES FOR ASB. ROOF
63	FRAMES FOR ASB. ROOF
64	FRAMES FOR ASB. ROOF
65	FRAMES FOR ASB. ROOF
66	FRAMES FOR ASB. ROOF
67	FRAMES FOR ASB. ROOF
68	FRAMES FOR ASB. ROOF
69	FRAMES FOR ASB. ROOF
70	FRAMES FOR ASB. ROOF
71	FRAMES FOR ASB. ROOF
72	FRAMES FOR ASB. ROOF
73	FRAMES FOR ASB. ROOF
74	FRAMES FOR ASB. ROOF
75	FRAMES FOR ASB. ROOF
76	FRAMES FOR ASB. ROOF
77	FRAMES FOR ASB. ROOF
78	FRAMES FOR ASB. ROOF
79	FRAMES FOR ASB. ROOF
80	FRAMES FOR ASB. ROOF
81	FRAMES FOR ASB. ROOF
82	FRAMES FOR ASB. ROOF
83	FRAMES FOR ASB. ROOF
84	FRAMES FOR ASB. ROOF
85	FRAMES FOR ASB. ROOF
86	FRAMES FOR ASB. ROOF
87	FRAMES FOR ASB. ROOF
88	FRAMES FOR ASB. ROOF
89	FRAMES FOR ASB. ROOF
90	FRAMES FOR ASB. ROOF
91	FRAMES FOR ASB. ROOF
92	FRAMES FOR ASB. ROOF
93	FRAMES FOR ASB. ROOF
94	FRAMES FOR ASB. ROOF
95	FRAMES FOR ASB. ROOF
96	FRAMES FOR ASB. ROOF
97	FRAMES FOR ASB. ROOF
98	FRAMES FOR ASB. ROOF
99	FRAMES FOR ASB. ROOF
100	FRAMES FOR ASB. ROOF

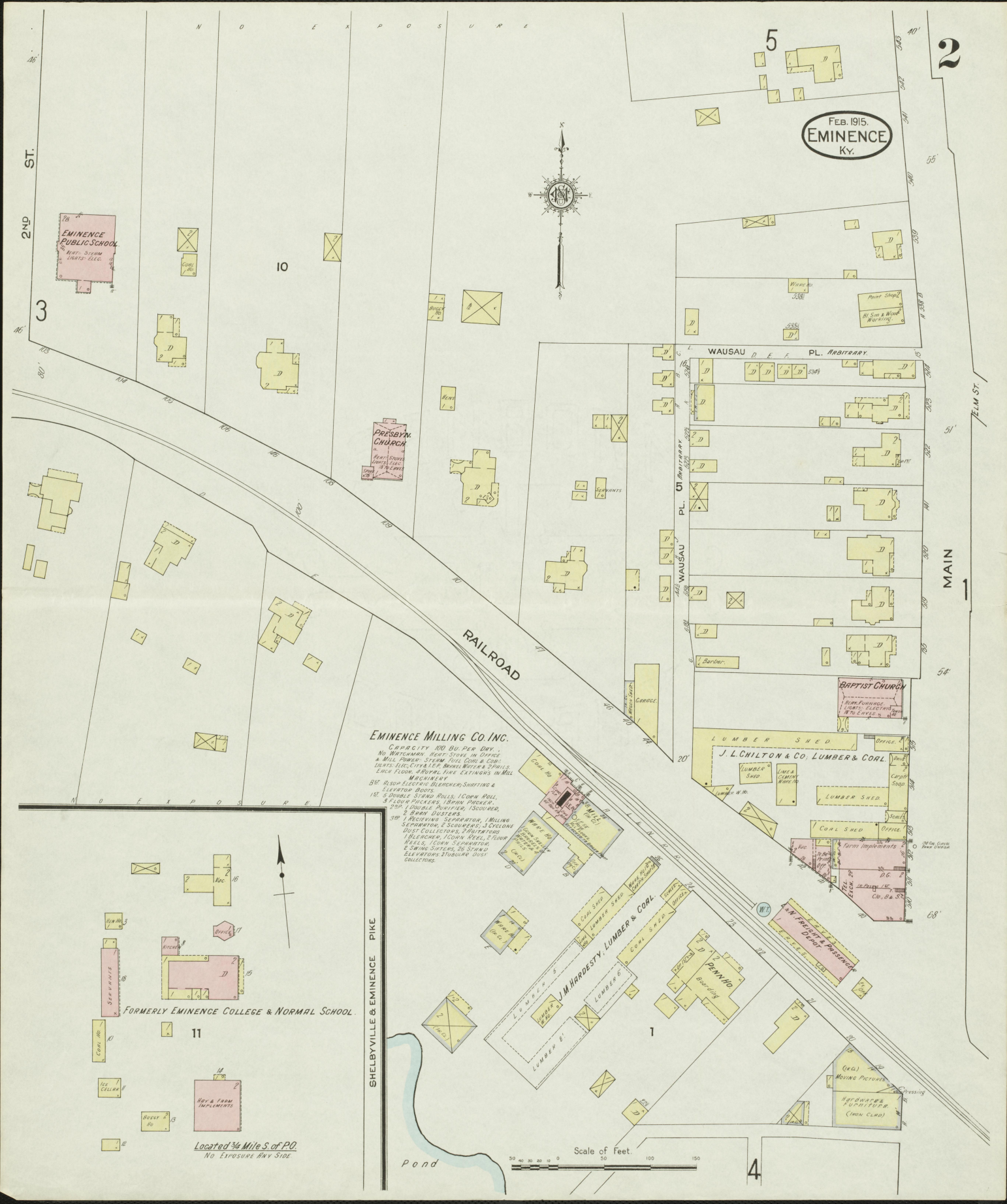


**INDEX**

STREETS	SHEET	SPECIALS	SHEET
Baptist Row	B	Baptist Church	B
Blackhawk	C	Beam & Son, Distillery	B
Cross (Arbitrary)	C	Blue Ribbon Distillery	B
Elm	E	Children, J. L. & Co., Lumber and Coal	B
First	F	Catholic Church	C
Hilton	H	Christians, J. L. & Co., Lumber and Coal	B
Kirtz	K	Christian Church	C
Main	M	Evidence College & Normal School (F. T.)	S
Pennsylvania	P	Farmer Loan and Tobacco Warehouse Co.	S
Wausau	W	Public School	P
Wausau Pl.	W	Wagon, C. & Co., County Producers	W
Wausau St.	W	Young, G. W., Carriage Factory	Y

NOTE.—House Numbers given are arbitrary.





FEB. 1915.  
EMINENCE  
KY.



**EMINENCE MILLING CO. INC.**

CAPACITY 100 BU. PER DAY.  
NO. WATCHMAN HEAT STOVE IN OFFICE  
& MILL POWER STEAM ROLL COIL & COIL  
LIGHTS ELEC. CITY & L.P. MANUEL WATER 2 INCHES  
EACH FLOOR. PORTAL FIRE EXTINGUISHER IN MILL  
MACHINERY  
38' ALSO ELECTRIC BLENDER, SHUFTING &  
ELEVATOR BOOTS  
18' DOUBLE STAND ROLL, 1 DOWN ROLL,  
& 2 DOWN PACKERS, 1 DOWN PACKER,  
2 20' 1 DOUBLE PUMPHOUSE, 1 SCOURER,  
2 SAW DUSTERS  
30' 1 PACKING SEPARATOR, 1 MILLING  
SEPARATOR, 2 SCUMERS, 3 CYCLONE  
DUST COLLECTORS, 3 SHUTTERS  
BLENDER, 1 CORN REEL, 2 RUNN  
BELLS, 1 CORN SEPARATOR  
& SOWING SIFTERS, 25 STAND  
ELEVATORS, 200 BU. STAIR  
COLLECTORS.

**FORMERLY EMINENCE COLLEGE & NORMAL SCHOOL.**

Located 3/4 Mile S. of P.O.  
No. EXPOSURE RAY SIDE

Scale of Feet.  
0 50 100 150

FEB. 1915.  
EMINENCE  
KY.

3

2ND ST.

ROAD

RAILROAD

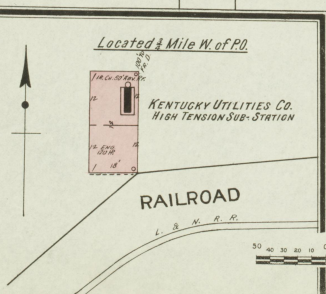
PENLETON

EARTH DRIVE  
GROWERS TOBACCO CO.  
WARE HO.  
(CORR. IN ON STRIPS)  
(10 C.)  
EARTH DRIVE

6

10

1



FEB. 1915.  
EMINENCE  
Ky.



2

1

4

WATER ST.

HINTON ST.

ST.

RAILROAD



2

3

CHRISTIAN CHURCH

CROSS

MAIN

KING

5

7

4

8

7

MAIN

8

BAPTIST ROW

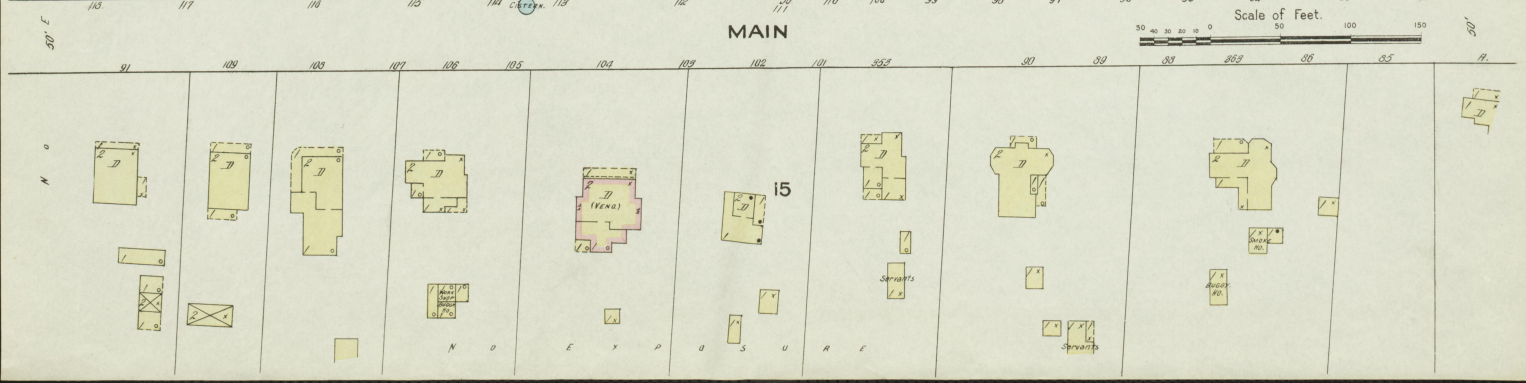
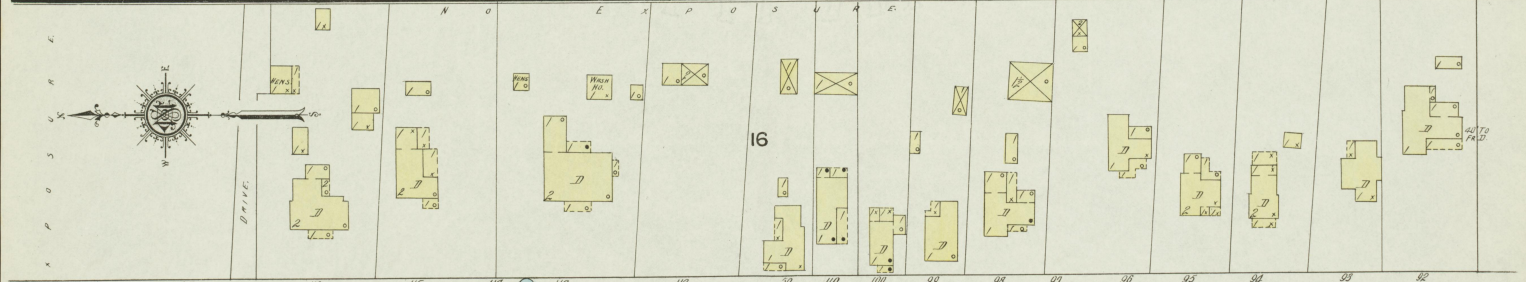
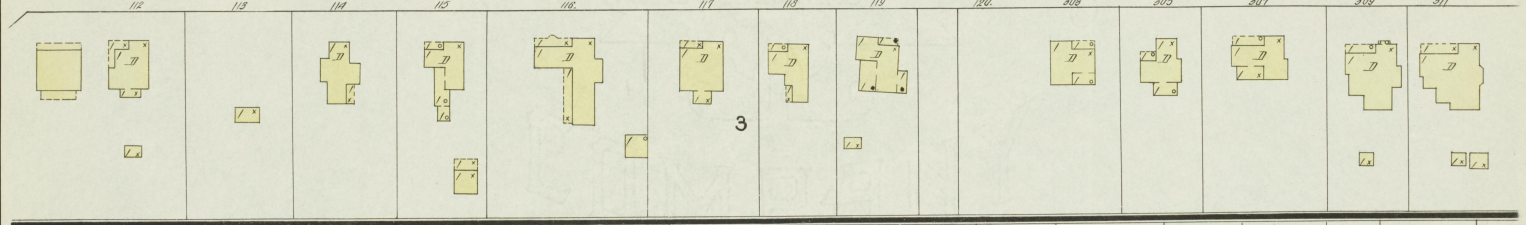
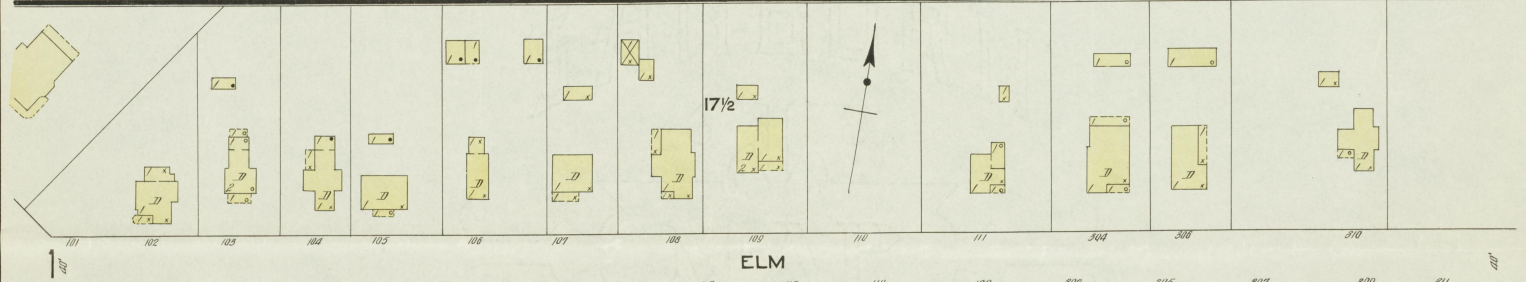
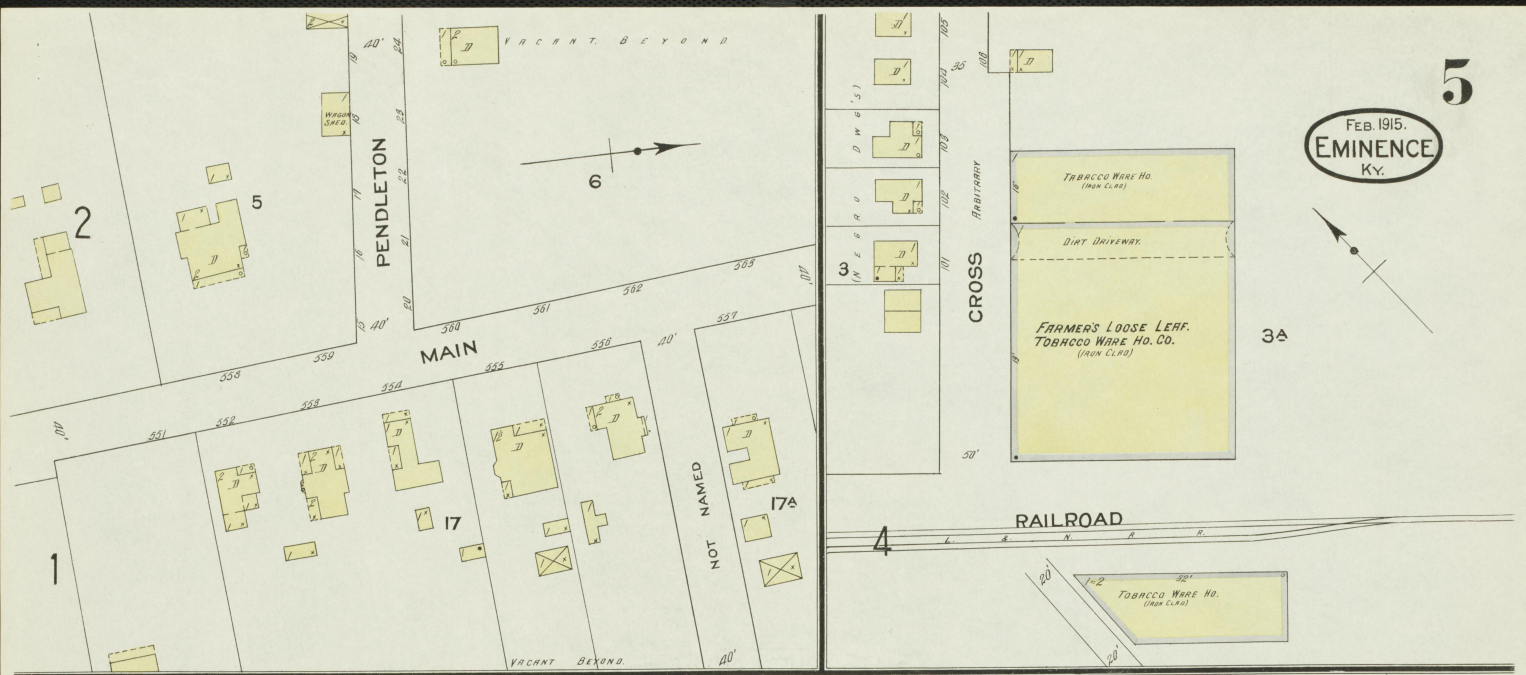
pond

Scale of Feet.

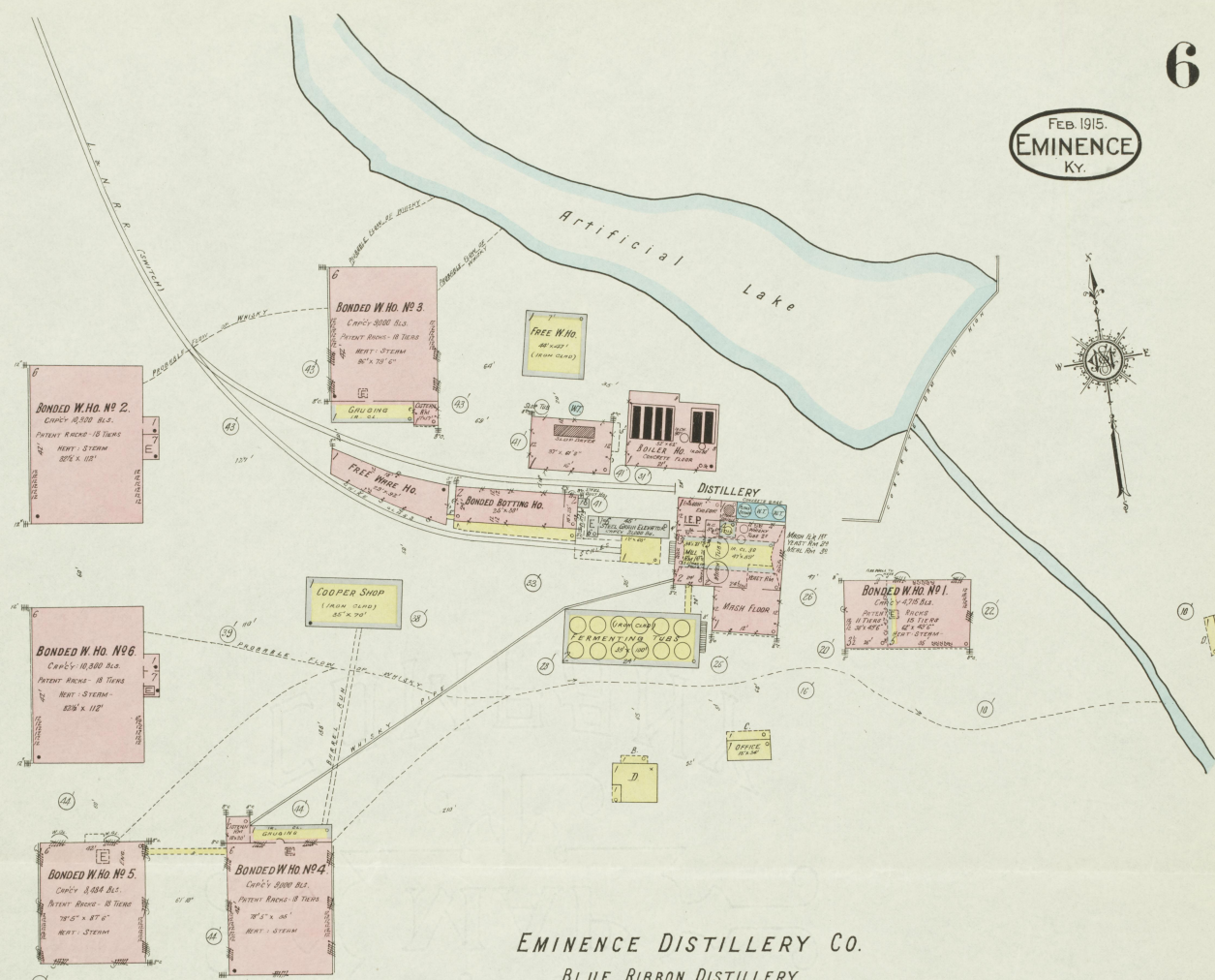
BLACKABY

4

FEB. 1915.  
EMINENCE  
KY.



FEB. 1915.  
EMINENCE  
KY.

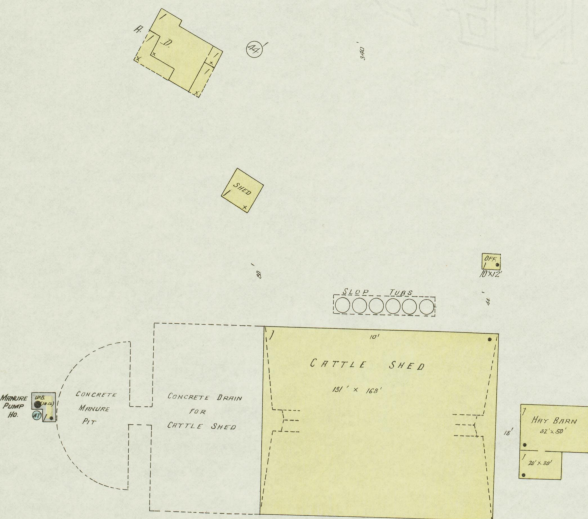


**EMINENCE DISTILLERY CO.**  
**BLUE RIBBON DISTILLERY**  
 GEO. BENZ & SONS, INC., PROPRs.  
 FORMERLY KNOWN AS FIBLE & CRABB DISTILLING COMPANY  
 Registered Distillery No 107, 5th District, Henry County, Ky.

PRODUCT: BOURBON & RYE HAND MADE SOUR MASH WHISKY  
 MASH CAPCY 754 BU YIELD ABOUT 250 GALS PER BU.  
 STEAM DOUBLER  
 RUN 5 MONTHS PER YEAR

NIGHT & SUNDAY WATCHMEN - NEWMARK CLOCK - 9 STRATIONS - HOURLY ROUNDS  
 HEAT STEAM & STOVES - FUEL COOKS - LIGHTS LAMP OIL - EXTENSIVE W. W. GAS  
 ELEC. LIGHTS L.E.P. IN DISTILLERY, BONDING BOTTLING RD., FREE RD. & OFFICE  
 SHEDS & PAILS ON WATER DISTRICT IN DISTILLERY - 2 SMALL FIRE PUMPS  
 SMALL AMOUNT OF P.C. ROSE - WATER SUPPLY FROM ARTIFICIAL LAKE

BONDED W. No. 1:	CAPCY	715 BLS.	PATENT RACKS,	17 & 15 TENS,	HEAT - STEAM
" 2:	"	10,500 "	"	18 "	" "
" 3:	"	5,000 "	"	15 "	" "
" 4:	"	3,000 "	"	15 "	" "
" 5:	"	5,000 "	"	18 "	" "
" 6:	"	10,300 "	"	18 "	" "



Located 3/4 Mile S.W. of P.O.  
 NO EXPOSURE ANY SIDE

