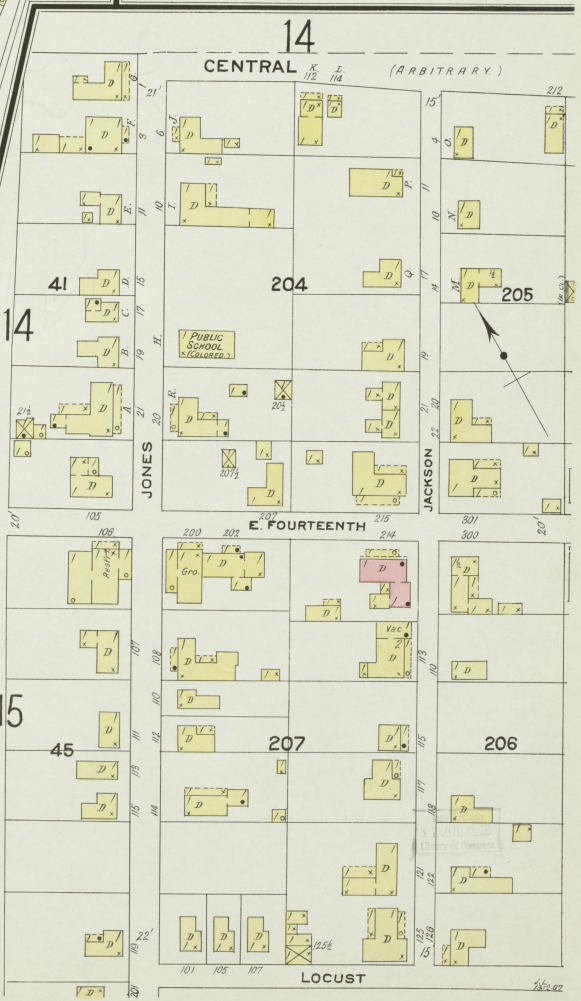
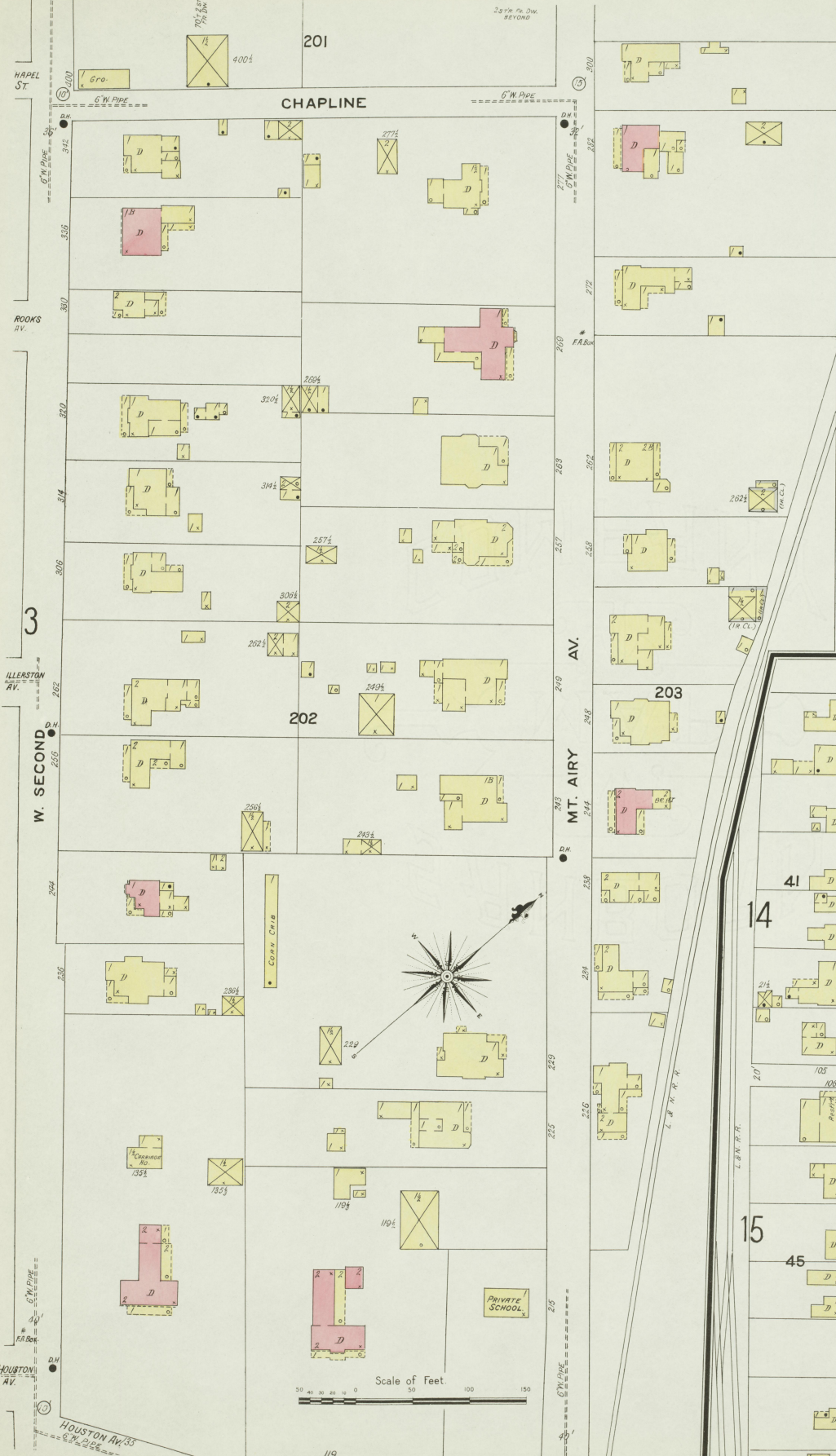
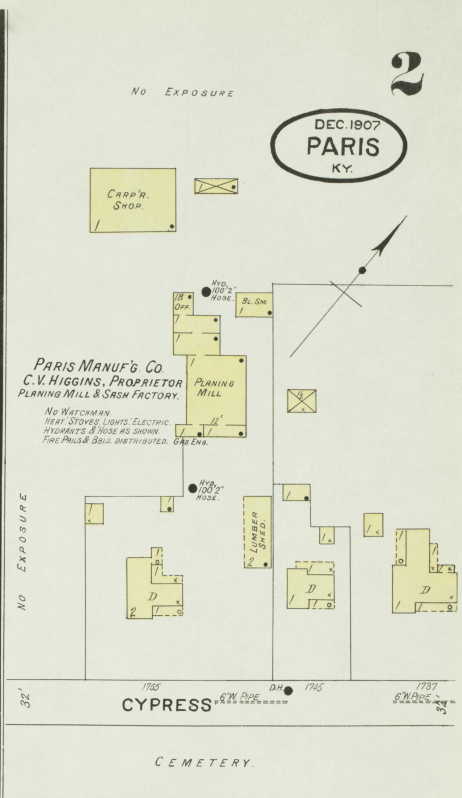
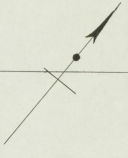
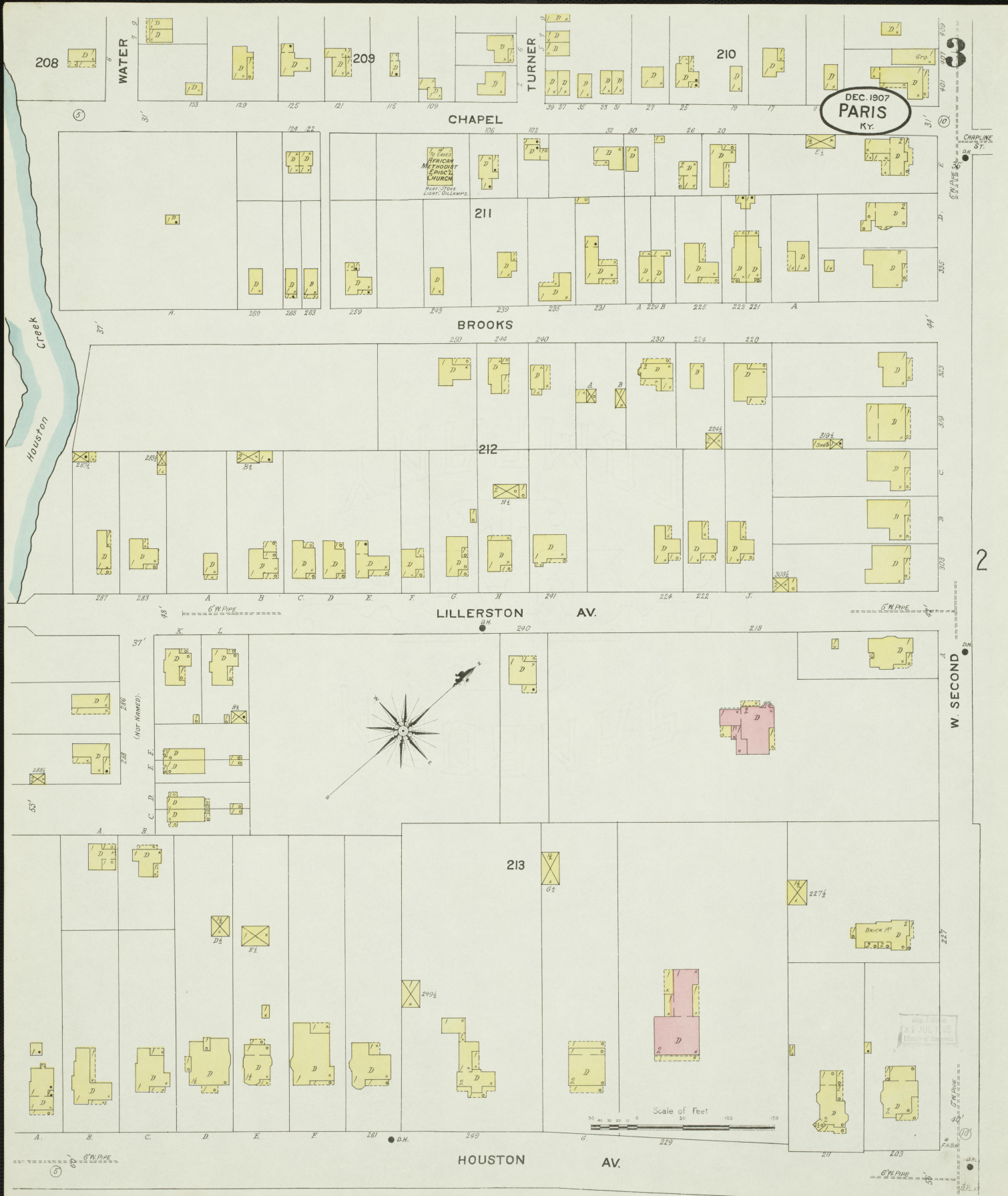


DEC. 1907
PARIS
KY.





DEC. 1907
PARIS
KY.

THE
FIRST
METHODIST
EPISCOPAL
CHURCH
Pastor: STONE
LARRY GILLEN

Scale of feet
0 50 100 150

2

DEC. 1907
PARIS
Ky.

4

5

6

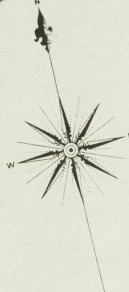
7



Houston Creek

Creek

Stoner Creek



THE PARIS BUS & TRANSFER LINE
J. H. FERGUSON, Proprietor

FERGUSON, WEBBER & WHALEY

BOURBON CO. JAIL

COVERED BRIDGE

W. SECOND

E. SECOND

J. U. BOARDMAN
LIVERY

WINDSOR HOTEL

MURPHY
Stock Shed

BANK ROW

BOURBON COUNTY COURT HO.
NEAR STAM; LIGHTS ELECTRIC

E. THIRD

STANFORD GREEN HO'S.
JOHN CHRISTMAN PROPRIETOR

EPISCOPAL CHURCH
FIRE DEPT.

COURT RM.
(Fire proof construction)

PLEASANT

NINETEENTH

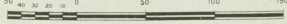
BROADWAY

W. FOURTH

6

E. FOURTH

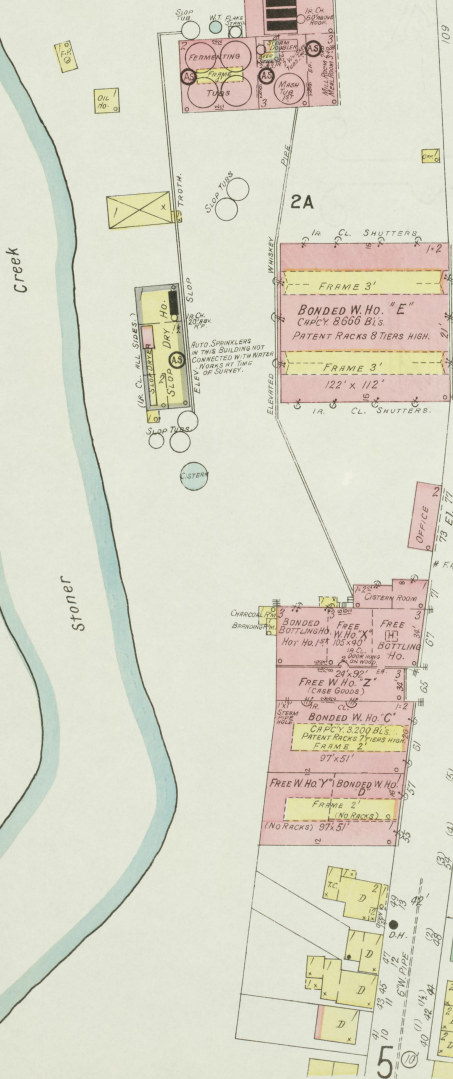
Scale of Feet.



**KENTUCKY DISTILLERIES AND WAREHOUSE CO.
G. G. WHITE DISTILLERY.**
MANUFACTURERS OF CHICKEN COCK BRAND WHISKEY.
Registered Distillery No. 14, 7th District, Bourbon Co., Ky.
PRODUCT: COPPER STILLED BOURBON WHISKEY.

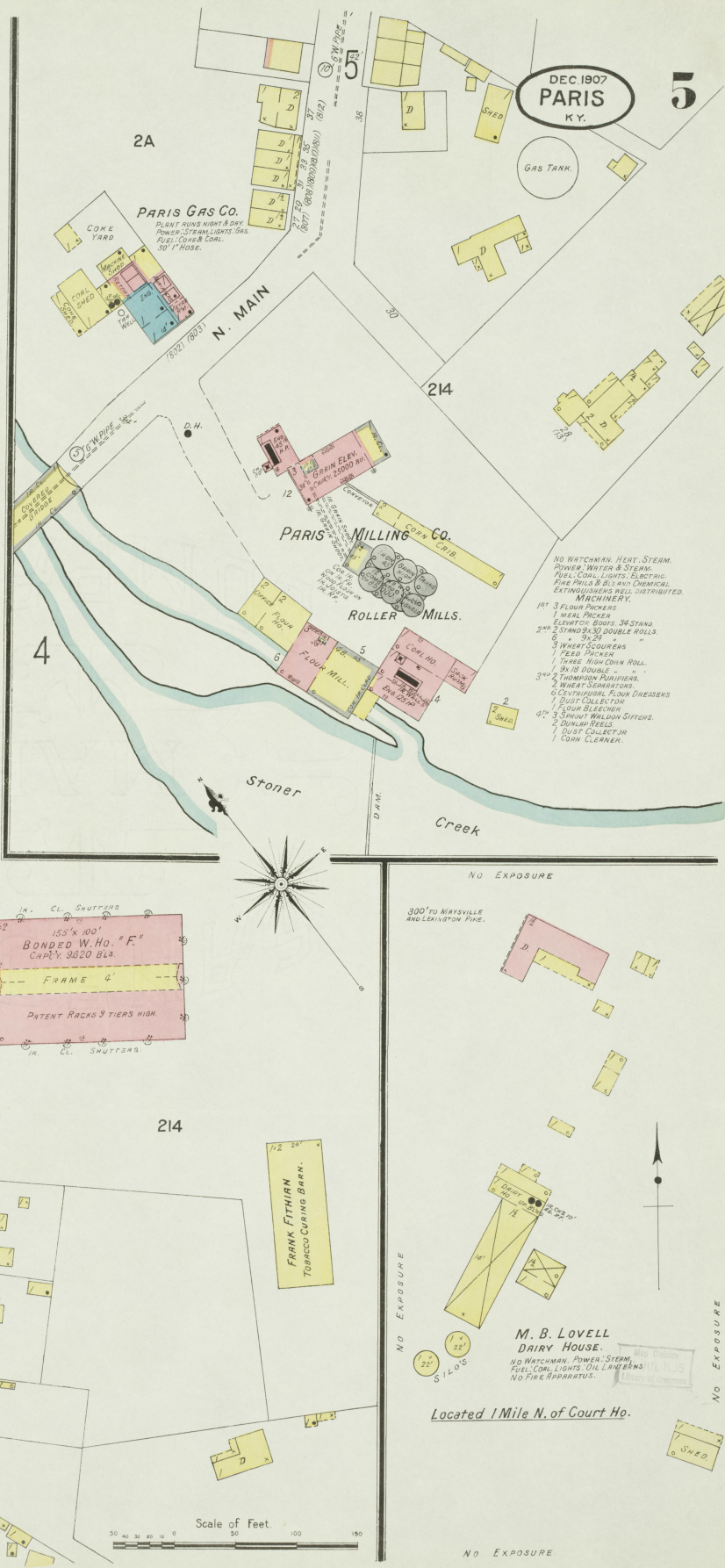
DISTILLERY OPERATED ABOUT 3 MONTHS IN YEAR.
CAPACITY: 600 BUSHELS. YIELD 44 GALS PER BUSHEL.
NIGHT PRODUCTION. NO CLOCK. HEAT STEAM IN WARE
HOUSES. C. E. RT. STIKES IN BOTTLING HOUSES AND
CHIEF FURNACE STEAM. FUEL: COAL. LIGHTS: CLOSD
OIL LAMPERS. (TO BE ELECTRIC).
OSWELL AUTO SPRINKLER SYSTEM IN DISTILLERY
- SET HEADS AND SLOW DOWN ROOF OF HOUSES. SPRINKLERS
FED BY SMALL TANK IN TOP OF DISTILLERY. AND DIRECT
CONNECTION WITH CITY WATER. DRAIN SYSTEM.
FIRE PAILS & BLS. DISTRIBUTED THROU WARE HOUSES.

DISTILLERY No. 14,
7th DIST. KY.



MAYSVILLE AND LEXINGTON PIKE

N. MAIN



DEC. 1907
PARIS
KY.

- NO WATCHMAN. HEAT. STEAM.
POWER. WATER & STEAM.
FUEL. COAL. LIGHTS. ELECTRIC.
FIRE PAILS & BLS. AND CHEMICAL
EXTINGUISHERS WELL DISTRIBUTED.
- MACHINERY.**
- 1st 3 FLOUR PICKERS
 - 1 MEAL PICKER
 - 2nd 2 ELEVATORS. BOOTS. 36 STAND
 - 2nd 2 STANDS. 36 DOUBLE ROLLS
 - 3rd 2 WHEAT SCOURERS
 - 1 FEED PICKER
 - 1 TARGE. HIGH CORN ROLL
 - 3rd 2x18 DOUBLE "
 - 3rd 2 THRESHING MACHINES
 - 6 CENTRIFUGAL FLOUR DRESSERS
 - 1 DUST COLLECTOR
 - 1 FLOUR BLEACHER
 - 2 SHUNT. MILLION OFFERS
 - 2 DUNKER REELS
 - 1 DUST COLLECTOR JR.
 - 1 CORN CLEANER.

NO EXPOSURE

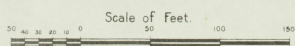
300' TO MAYSVILLE
AND LEXINGTON PIKE.

NO EXPOSURE

**M. B. LOVELL
DAIRY HOUSE.**
NO WATCHMAN. POWER. STEAM.
FUEL. COAL. LIGHTS. OIL LAMPERS.
NO FIRE APPARATUS.

Located 1 Mile N. of Court Ho.

NO EXPOSURE



FIFTH ST.

PLEASANT

DEC. 1907
PARIS
Ky.

R. B. HUTCHCRAFT
GRAIN ELEVATOR
SUTTER AND EXTERIOR
8' HOLLOW WALL
DISTANCE

4

6

E. FOURTH

E. THIRD

8

8

DUNCAN AV.

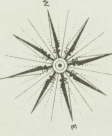
SCOTT AV.

WATER AV.

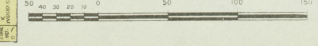
VINE

RAILROAD

Stoner Creek.



Scale of Feet



POWER GROCERY CO.
WAREHOUSE
SAND
ON 1ST FL. INCL. 2 D.

C. S. BRENT & BROS.
COAL AND FEED.

J. S. WILSON & CO.
COAL YARD.

HUTCHCRAFT & BRENT
SEED CLEANING HOUSE.
POWER STEAM FUELLOOM.
NO HEAT LIGHTS
MACHINE
85' CYLINDER
14' CYLINDER, 17' IN, 2 REELS
REQUIRES SEVERAL COLLECTIONS
28' 2' 8" HOLLOW TOWER
1 REEL IN 17'

SEED WAREHOUSE
CONCRETE WALL SIDES

GENL. STORAGE.

E. F. SPEARS & SONS
WAREHOUSE
SEED AND GRAIN
ONE ROVAL EXTERIOR
ONE BARREL OF WATER
2 BUCKETS EACH
FLOOR
LOW IN CL. ALL SIDES

E. F. SPEARS & SONS
SEED CLEANING HOUSE
ROVAL EXTERIOR 14' AND 20'
ROVAL EXTERIOR 18' AND 20'
ROVAL EXTERIOR 18' AND 20'
MACHINE NOT PLACED
POWER STEAM NO HEAT
FUEL LOOM NO LIGHTS

WAREHOUSE
SEED AND GRAIN

OR

ALLEY.

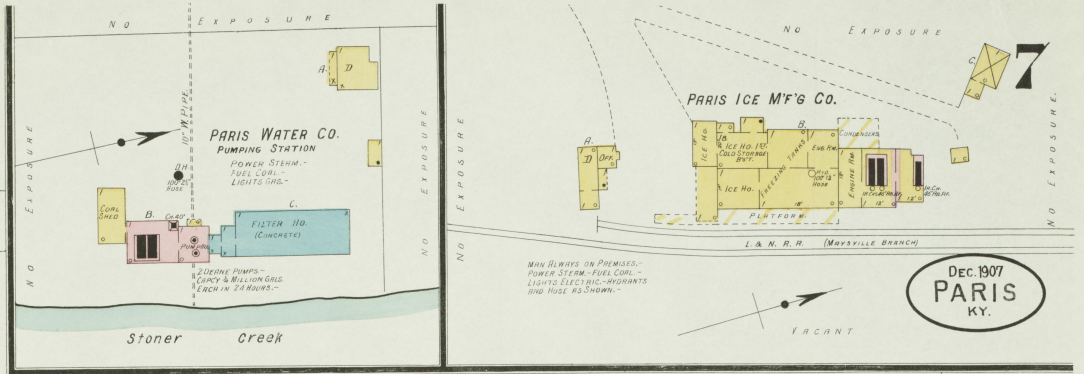
17 1/2

1907

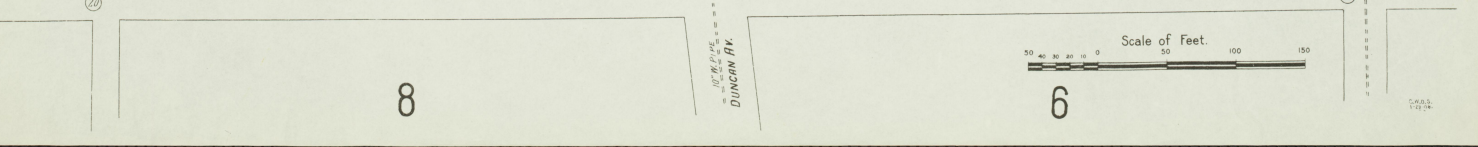
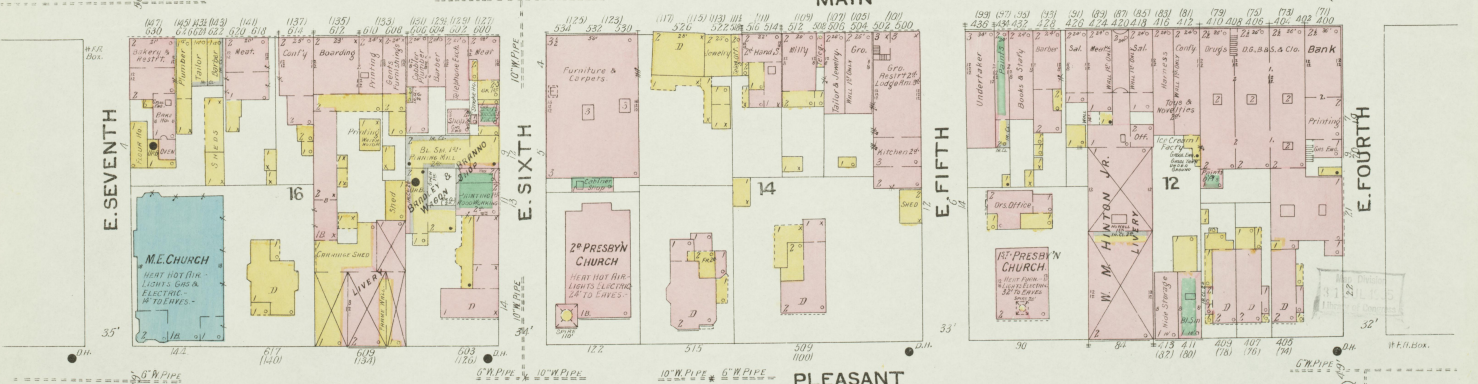
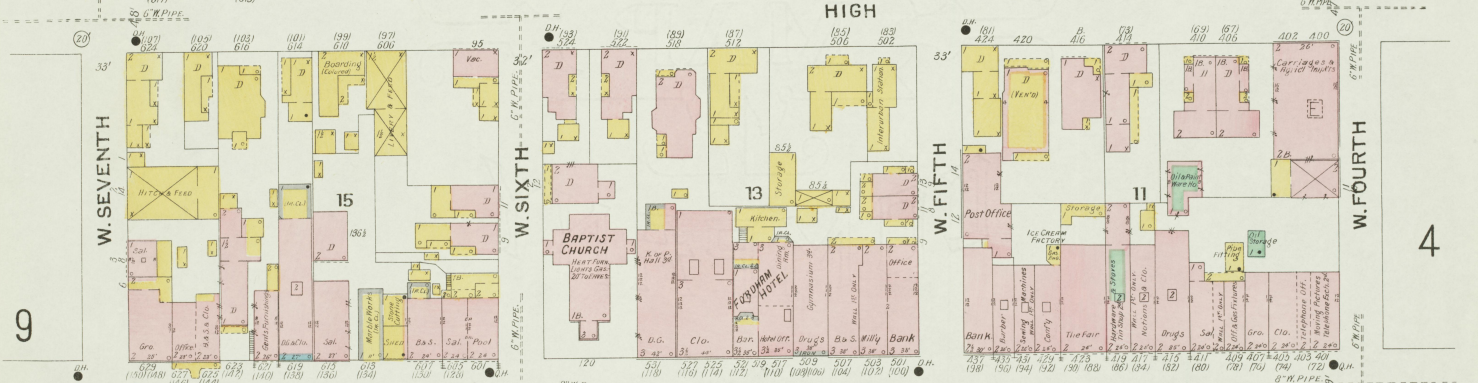
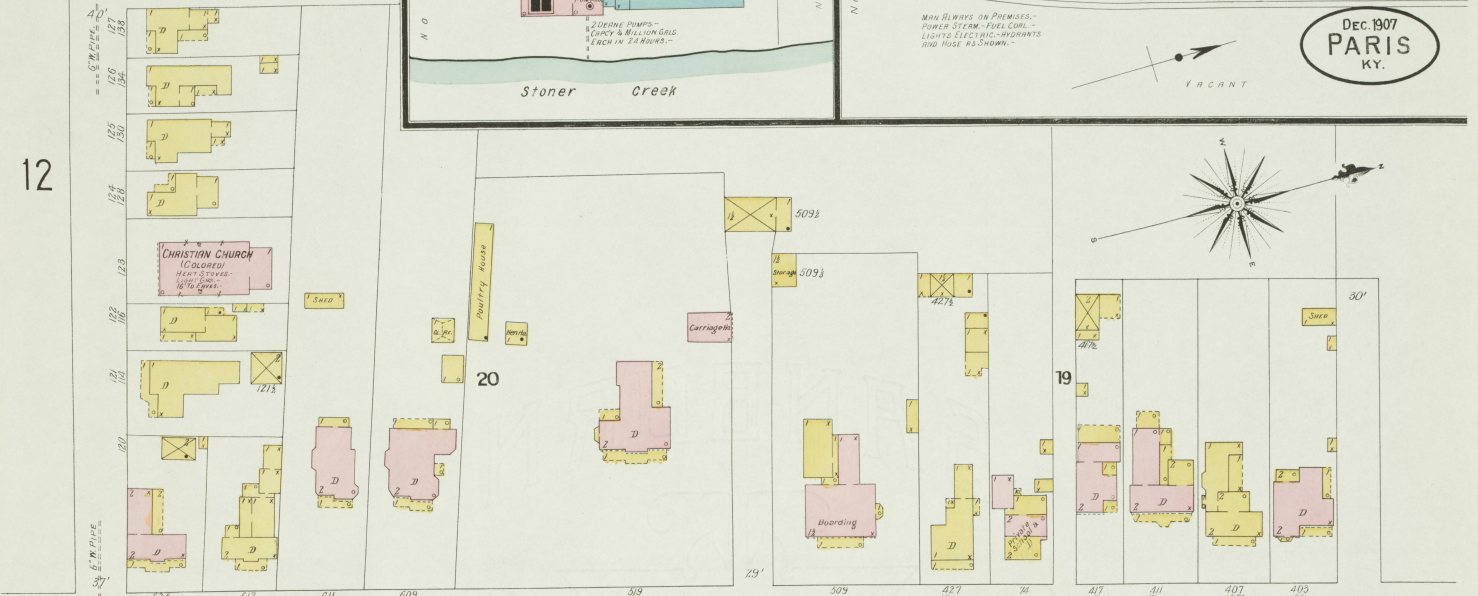
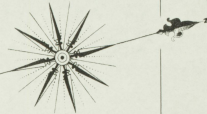
12

FERGUSON

12



Dec. 1907
PARIS
 KY.



Scale of Feet.
 0 50 100 150



7
 8
 DEC. 1907
PARIS
 KY.

PLEASANT

VINE

E. SEVENTH

DUNCAN AV.

WINCHESTER AV.

WINCHESTER AV.

VINE

GEO. W. ELLIS TOBACCO RE-HANDLING HO.

SPRINKER B. TOBACCO RE-HANDLING HO.

PARIS ELECTRIC LIGHT CO.

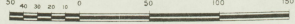
ENGINE & DYNAMO ROOM
 ROOM
 ROOM

CHAS. S. BENT & BRO., GRASS SEED, HEMP, WOOL, GRAIN & TOBACCO W. HO.

S. S. WILSON BLUE GRASS SEED DEALER.

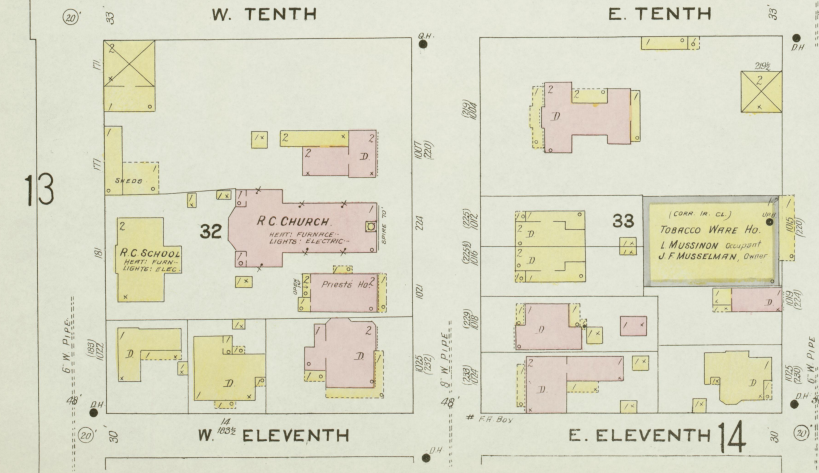
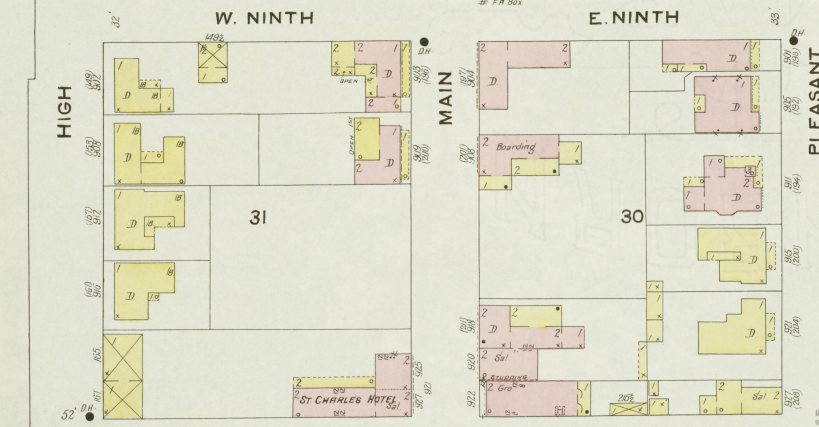
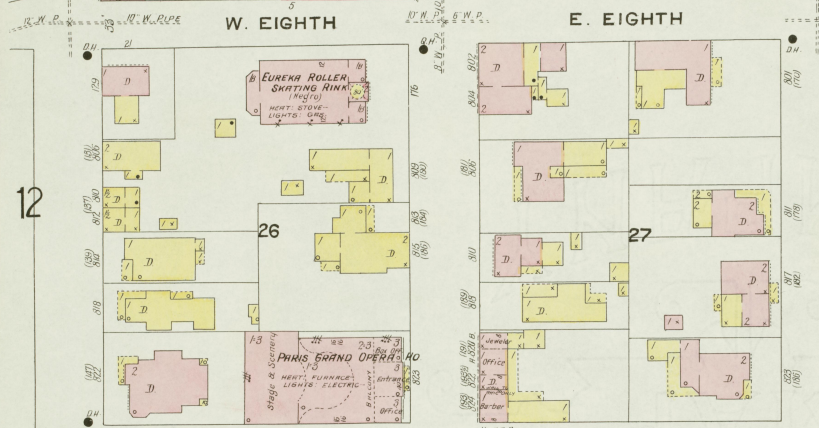
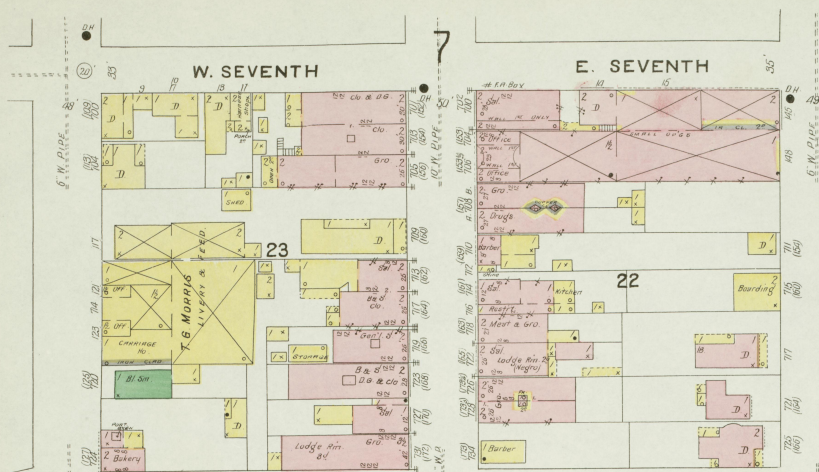
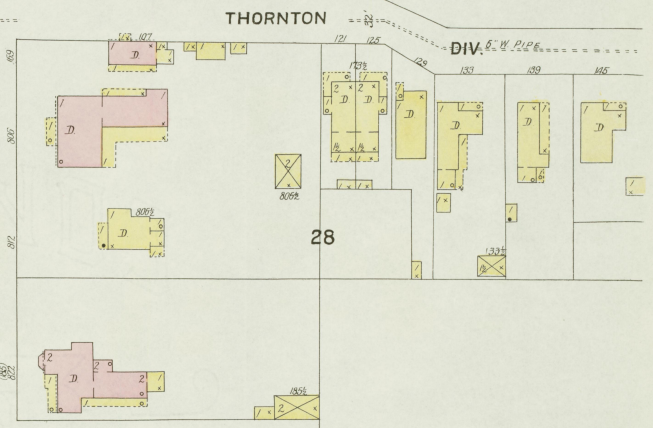
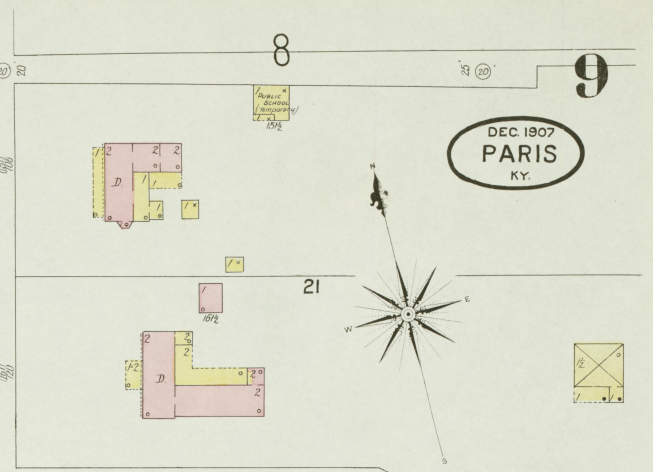
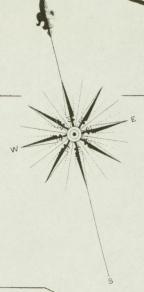
Blue Grass Seed W. Ho.
 (Main building)
 Blue Grass Seed W. Ho.
 2 DIRT COLLARS

Scale of Feet.



FR. UELLINGS BEYOND.

DEC 1907
PARIS
KY.



Scale of Feet.
0 50 100 150

W. SEVENTH

E. SEVENTH

W. EIGHTH

E. EIGHTH

W. NINTH

E. NINTH

W. TENTH

E. TENTH

W. ELEVENTH

E. ELEVENTH

THORNTON

DIV. S. W. PIPE

WINCHESTER AV.

TOBACCO WARE HO.
J. MUSSELMAN, Owner

R.C. CHURCH
HEAT FURNACE
LIGHTS ELECTRIC

ST CHARLES HOTEL

PARIS GRAND OPERA HO
HEAT FURNACE
LIGHTS ELECTRIC

EUREKA ROLLER
SHOOTING RINK
HEAT FURNACE
LIGHTS ELECTRIC

T.B. MORRIS
LIGHTS ELECTRIC

TOBACCO WARE HO.
J. MUSSELMAN, Owner

R.C. CHURCH
HEAT FURNACE
LIGHTS ELECTRIC

ST CHARLES HOTEL

PARIS GRAND OPERA HO
HEAT FURNACE
LIGHTS ELECTRIC

EUREKA ROLLER
SHOOTING RINK
HEAT FURNACE
LIGHTS ELECTRIC

T.B. MORRIS
LIGHTS ELECTRIC

DEC. 1907
PARIS
KY.

10

NO EXPOSURE



215

216

217

218

LILLERSTON AV.

HANSON

WILLIAMS

AV.

HIGGINS

THOMAS AV.

220

219

223

PUBLIC SCHOOL
(COURSES)
Near Street
Corner Site

W. SEVENTH

224

225

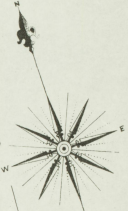
J.W. THOMAS, JR.
TOBACCO
RE-HANDLING HO.

J.W. THOMAS, JR.
TOBACCO
RE-HANDLING HO.

Scale of Feet.

WALKER

DEC. 1907
PARIS
KY.



A/3

12

11

10
HIGGINS AV.

W. SEVENTH

10

225

A/2

HENDERSON

12

WILLIAMS

WALKER

224

ZION BAPTIST CHURCH

W. EIGHTH

Scale of Feet
0 50 100 150

226

LYLESVILLE

227

WEST

228

IA

PEARL

13

DEC 1907
PARIS
KY.



W. SEVENTH

W. EIGHTH

PEARL

Scale of Feet

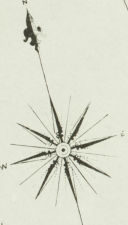
24
MUNICK & WIDES & CO.
JUNK YARD.

BAPTIST
CHURCH
(CHORUS)
18 TO 20 FEET
LIGHTS, GAS & ELECTRIC

25
CHRISTIAN CHURCH.
14 FT. CHURCH
LIGHTS, GAS & ELECTRIC

HERT STEAM
LIGHTS ELECTRIC
(FRONT PLANS)
PARIS PUBLIC SCHOOL
BULLOCK
305.

W.T. OVERBEY.
TOBACCO
RE HANDLING HSE.



DEC. 1907
PARIS
Ky.

13

11

WALKER AV.

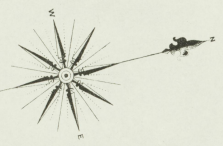
SHORT

PEARL

BOURBON FEMALE COLLEGE
REAR STORES & BURNING
LIGHTS ELECTRIC

229

228



SYCAMORE

12

W. TWELFTH

15

39

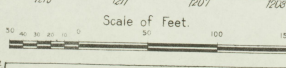
38

25

ST. PAUL'S M.E. CHURCH
(Colored)
REAR STORES
LIGHTS AND
GAS TO REAR

HIGH

9



W 13TH ST.

14

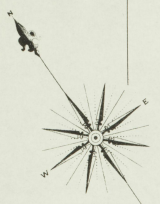
W 13TH ST.

W 11TH ST.

W 10TH ST.

DEC 1907
PARIS
KY

14
8

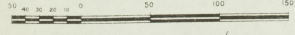


13

HIGH

50'

Scale of Feet



CLINTONVILLE PIKE

2

JONES ST.

JACKSON ST.

S. MAIN

PLEASANT

W. ELEVENTH

E. ELEVENTH

W. TWELFTH

E. TWELFTH

W. THIRTEENTH

W. TWELFTH ST.

W. FOURTEENTH

E. FOURTEENTH

PUBLIC SCHOOLS

BOURBON LUMBER CO.

TEMPLIN LUMBER CO.

AMERICAN TRADING CO.

42

40

41

35

37

36

9

15



15

13

39

15

39

43

44

16

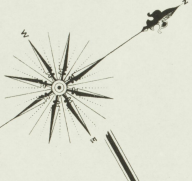
14

S. MAIN

45

E. FOURTEENTH

2



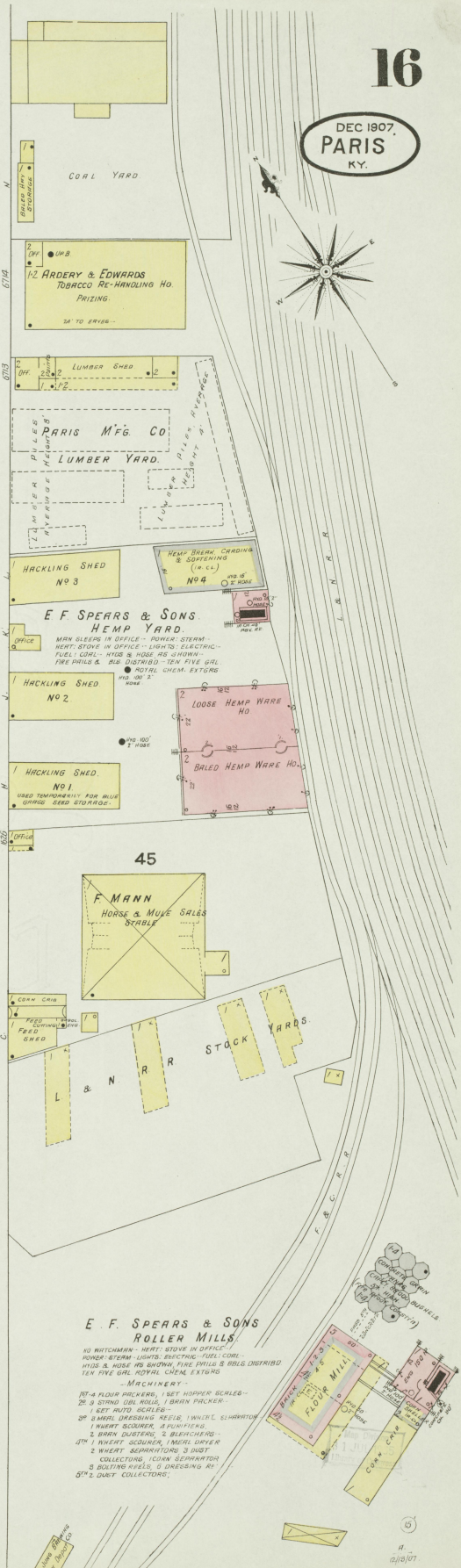
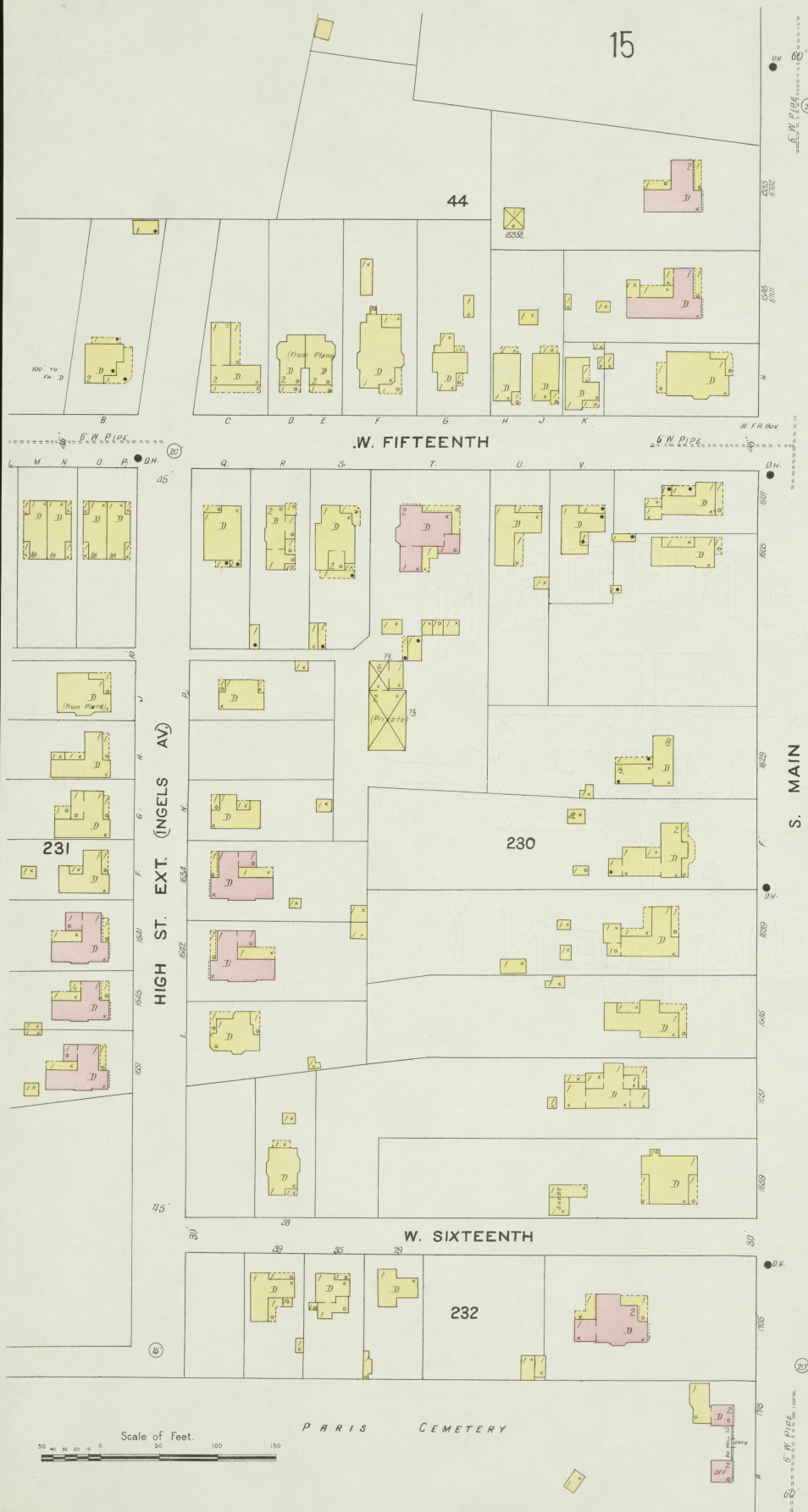
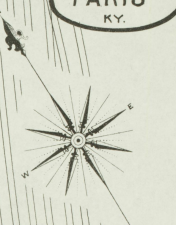
Scale of Feet.
0 10 20 30 40 50 60 70 80 90 100 110 120 130 140 150

NO WATCHMAN
HUNT STOPS BY OFFICE
LIGHTS ON, SHOPS IN
CLOSING, 2 P.M.

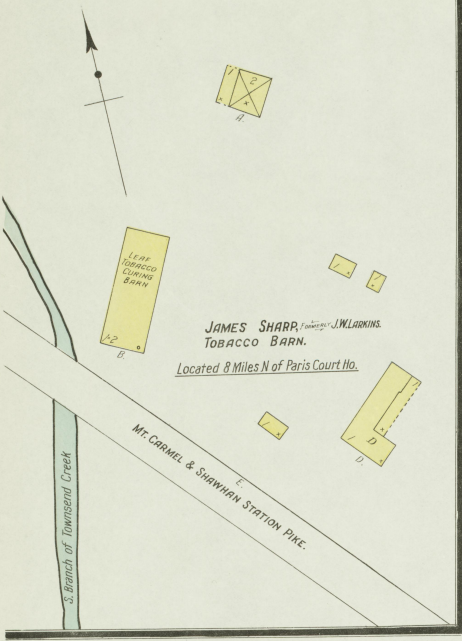
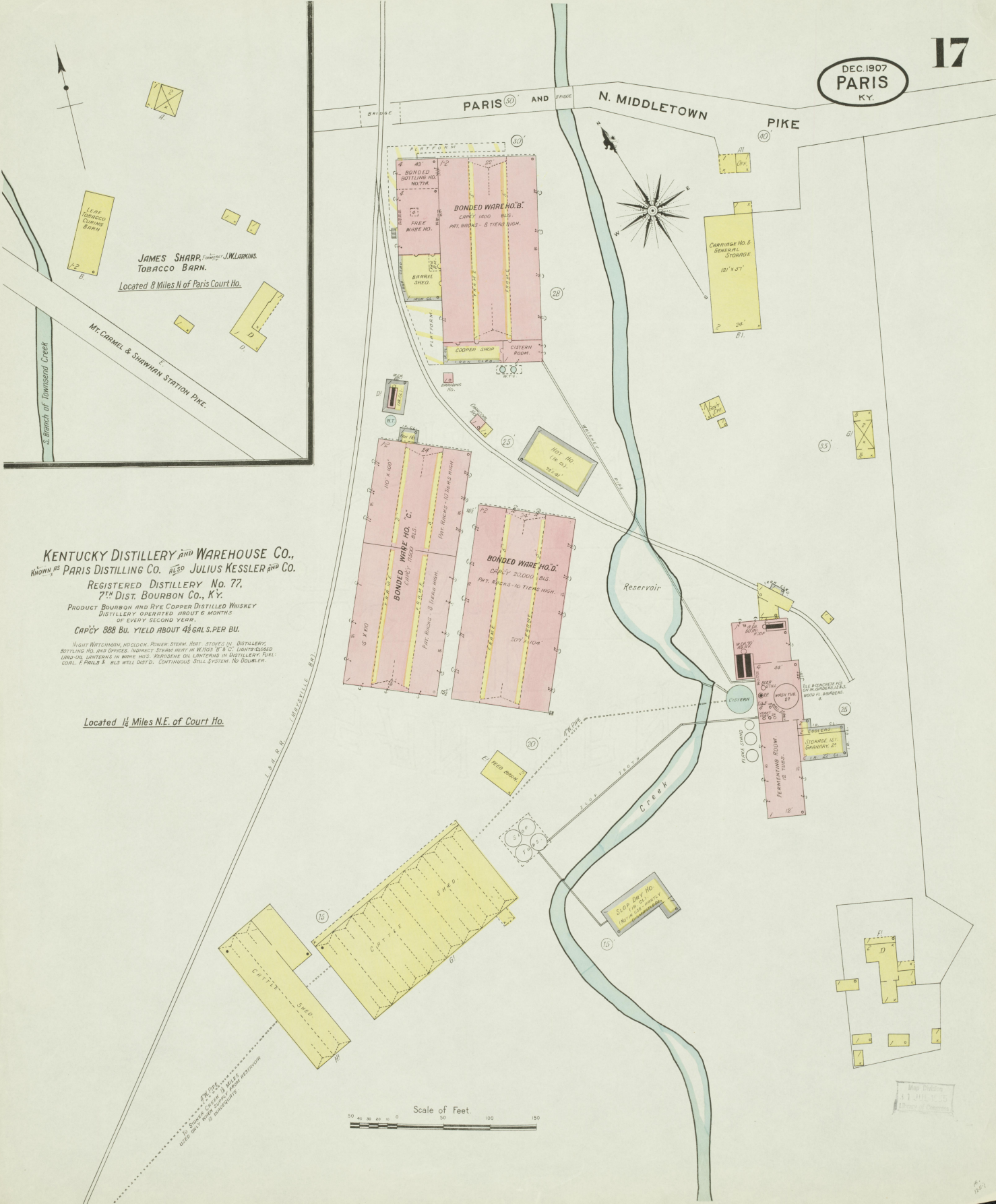
TOBACCO-TRADING HIGH
J.M. & C. BRON
OWNER
D.M. REED
OCCUPANT

STANDARD OIL CO.
D.M. STANFORD
(100 G.)

DEC 1907.
PARIS
KY.



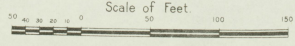
- E. F. SPEARS & SONS ROLLER MILLS**
- 40 BUTCHMAN - HART'S STOVE IN OFFICE
 - POWER - STEAM - LIGHTS - ELECTRIC - FUEL - COAL
 - HOSE & HOSE HO. SHOWING, FIVE DRYER & ROLL DRYING
 - TEN FIVE GRL. ROYAL CHEM. EXTORS
- MACHINERY**
- 1ST - 4 FLOUR PICKERS, 1 SET HOPPER SCALERS
 - 2ND - 3 STYND. CIL. ROLLS, 1 BRAN PICKER
 - 1 SET HOTO SCALERS
 - 3RD - 2 BURL DRESSING REELS, 1 WHEAT. ELEVATOR
 - 1 WHEAT. SCOURER, 2 PUNYFIERS
 - 2 BURN. DRYERS, 2 BURL-DRESSERS
 - 4TH - 1 WHEAT. SCOURER, 1 METAL DRYER
 - 1 WHEAT. SCOURING-TANS, 3 SHET.
 - COLLECTING, 1 CUMM. SEPARATOR
 - 5 BULTING RIFLES, 3 DRESSING AT
 - 5TH - 2 BURL. COLLECTORS



KENTUCKY DISTILLERY and WAREHOUSE CO.,
Known as **PARIS DISTILLING Co.** and **JULIUS KESSLER and Co.**
REGISTERED DISTILLERY No. 77,
7th Dist. BOURBON Co., KY.
PRODUCT BOURBON and RYE COPPER DISTILLED WHISKEY
DISTILLERY OPERATED ABOUT 6 MONTHS
OF EVERY SECOND YEAR.
CAP'CY 888 BU. YIELD ABOUT 4 1/2 GAL S. PER BU.

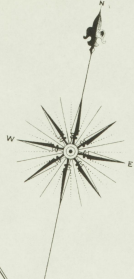
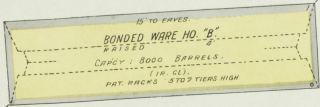
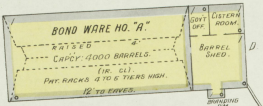
NIGHT WATCHMAN, NO CLOCK, POWER STEAM, HIGH STOVES IN DISTILLERY,
BOTTLING HD. AND DRICES, INDICAT STEAM HEAT IN BLDGS 2' & 1 1/2', LIGHTER BURNED
LARD OIL LANTERNS IN WARE HO.; RESERVOIR OIL LANTERNS IN DISTILLERY FUEL;
COAL, 1 PAILS & BLS WELL DRYD, CONTINUOUS SOIL SYSTEM, NO DRAINAGE.

Located 1/4 Miles N.E. of Court Ho.



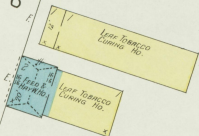
Map drawn
J. J. H. 1907
J. J. H. 1907

N O E X P O S U R E



J. Q. WARDE, OWNER;
CALVIN JONES, OCCUPANT.

Located 6 1/2 Miles N.W. of Paris Court Ho.

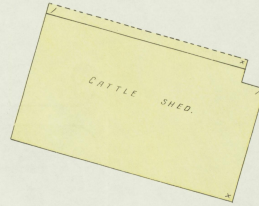


N O E X P O S U R E

Located 5 Miles N. of Paris Court Ho.

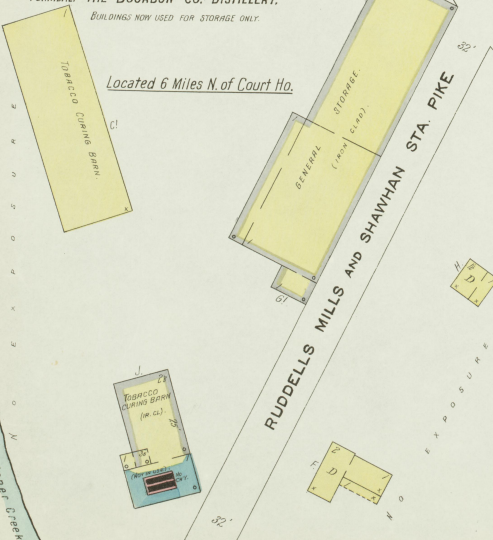
THE PEACOCK DISTILLERY CO. INC.
REGISTERED DISTILLERY NO. 10.
7TH DIST. BOURBON CO., KY.
PRODUCT BOURBON & RYE
SOUR MASH WHISKEY.
DAILY CAPCY 600 BU - YIELD 45 GALS PER BU.
RUN 4 OR 5 MONTHS OF YEAR.

NO WATCHMAN. POWER-STEAM. HEAT- STOVES IN
DISTILLERY AND GOVERNMENT IN HO. & BOTTLING HO. NO
HEAT IN WARE HO. TELEPHONE. LIGHTS OIL. 7 TONS CO-
LD NOSE. WATER FROM CREEK. STEAM DOUBLER.



PROPERTY OF **KENTUCKY DISTILLERY CO. W. HO. CO.**
FORMERLY THE BOURBON CO. DISTILLERY.
BUILDINGS NOW USED FOR STORAGE ONLY.

Located 6 Miles N. of Court Ho.



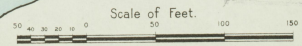
PARIS AND KISERTON
PIKE

PARIS AND RUDELLS
MILLS PIKE

RUDELLS MILLS AND SHAWHAN STA. PIKE

CLAY AND KISER
PIKE

STONE CREEK



Map drawn
11.10.07
11.10.07