



SEE

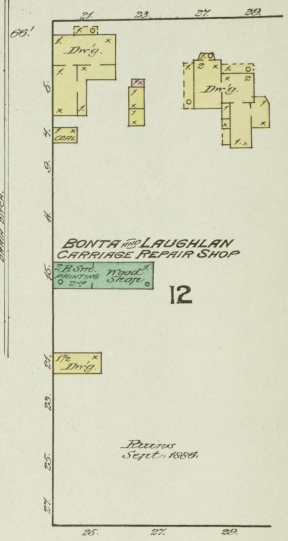
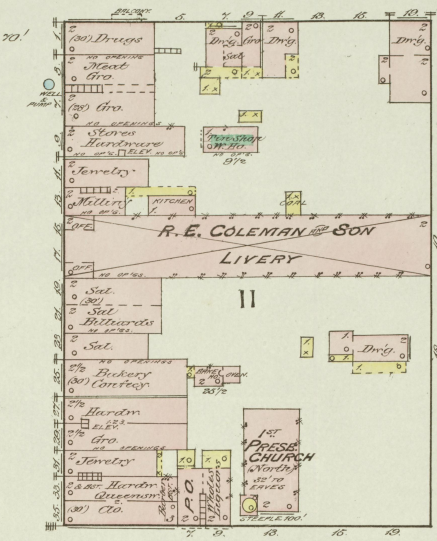
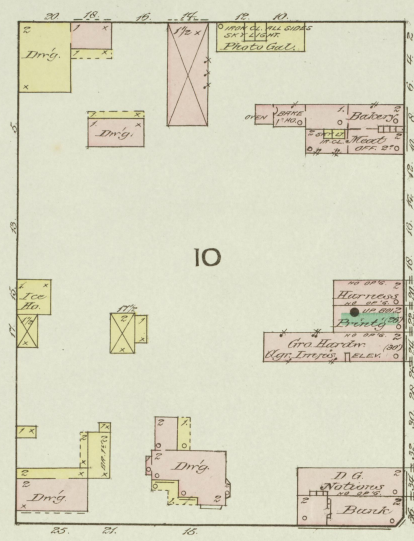
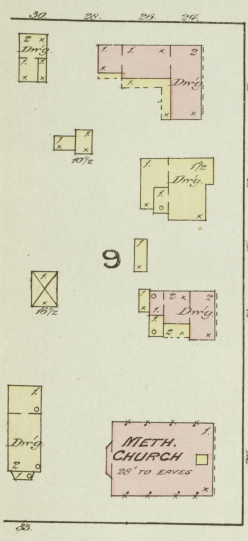
SHEET

NO. 1

OCT. 1886  
**HARRODSBURG**  
KY. **2**

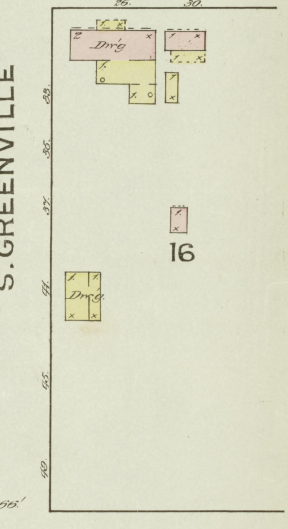
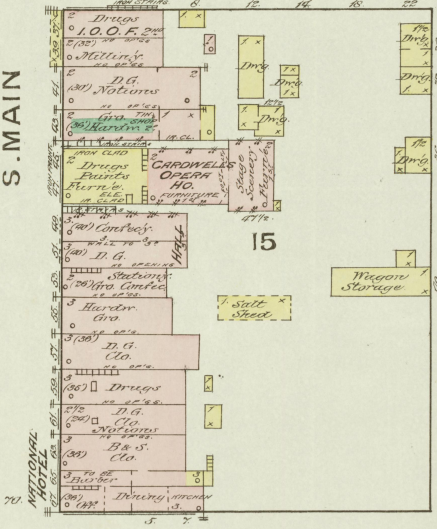
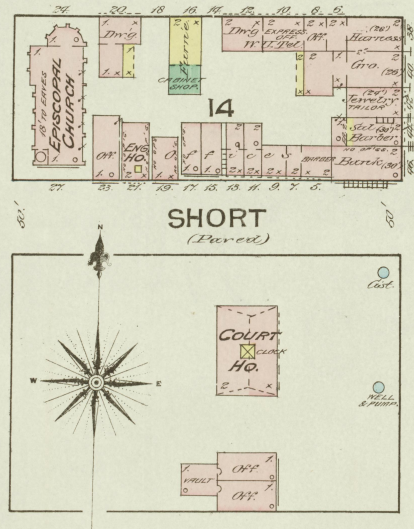
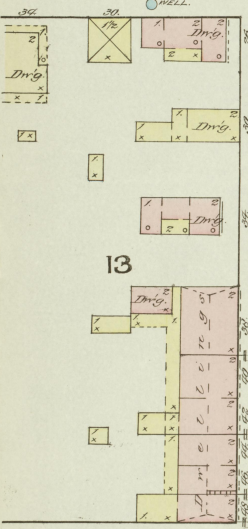
W. LEXINGTON AV.

E. LEXINGTON AV.



W. POPLAR  
(Paved)

E. POPLAR



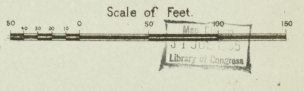
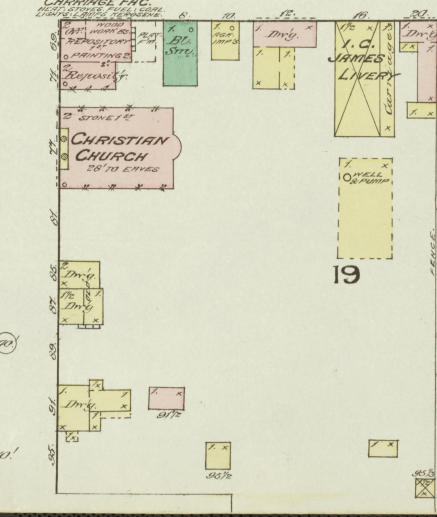
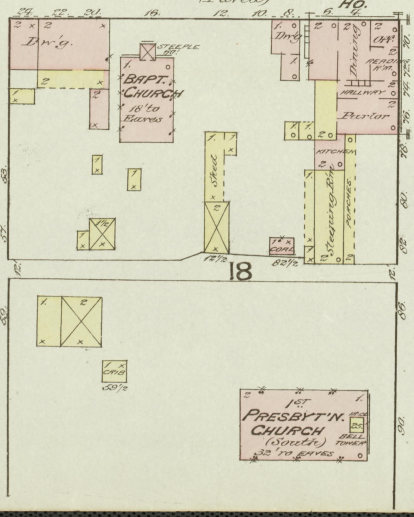
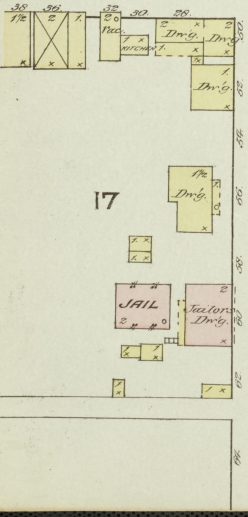
S. CHILES

S. MAIN

S. GREENVILLE

W. OFFICE  
(Paved) COMMERCIAL

E. OFFICE



OCT. 1886  
HARRODSBURG  
KY.

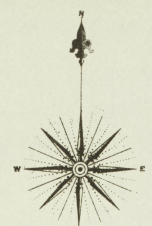
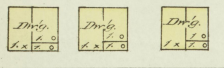
NO EXPOSURES

23

**CITY MILLS**  
T. S. MARINON

MILL  
POWER: STEAM, FUEL, COAL  
WATER: STATE IN 1878; NO WATER CURRENTLY  
NO HOSE  
CAPACITY: 600 BBL. PER WEEK  
FOR 24 HOURS (NET WEIGHT 100 LBS.)  
THE MILL IS EQUIPPED WITH THE LATEST MACHINERY  
& IS IN FULL RUNNING ORDER  
4 MILLWHEELS, 4 MILLSTONES, 4 MILLRACES  
300 FEET PER MIN.

WATER  
WHEEL  
MILL  
CRANKING  
MILL  
MILL  
MILL



22

NO EXPOSURES

E. OFFICE (PAVED)

DEPOT

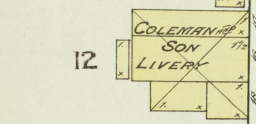
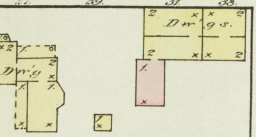
MERCER GRAIN & COAL CO.

21

8

20

E. LEXINGTON ST. (PAVED)



COLEMAN & SON  
LIVERY

S. EAST ST. (PAVED)

GRAIN ELEV.  
CAP. 50,000 BUSHELS  
CONCRETE STEEL (BRICK  
WIND & LIGHT)

GRAIN ELEV.  
CAP. 50,000 BUSHELS  
CONCRETE STEEL (BRICK  
WIND & LIGHT)

S. WESTERN R.W.Y.

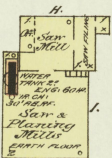
MERCER GRAIN & COAL CO.  
STEAM, NO HOSE, NO LIGHTS, NO HOSE.

ENG. NO.

Scattered  
Lumber & Logs

**HARRODSBURG  
PLANING MILL CO.**

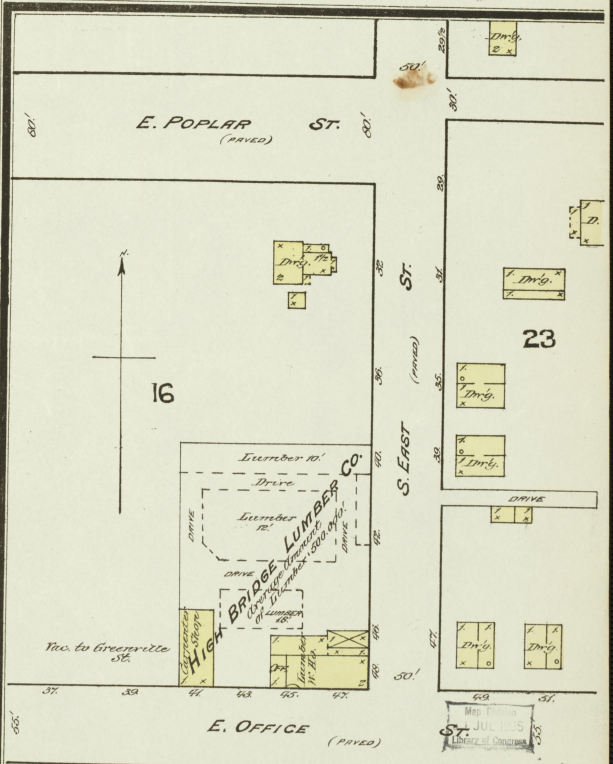
WATER POWERED, 100 H.P. ENGINE  
& POWER FROM RIVER, SAWING  
& PLANING, STONE IN 1878, LUMBER  
LUMBER, RESIDUES & LARD  
MILL  
NO SAWING, BRIND & DAVIS, CUT  
1000 & 1000  
2000 & 1000, 1000 SAW, PLANER  
STOCK



NO EXPOSURES.

E. POPLAR ST. (PAVED)

16

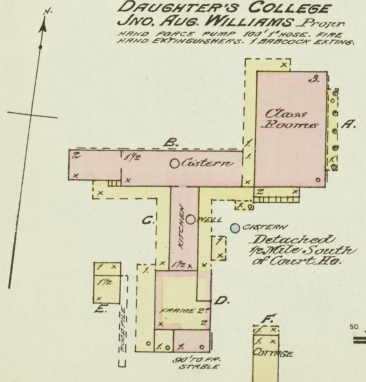


23

E. OFFICE (PAVED)

NO EXPOSURE

**DAUGHTER'S COLLEGE**  
JNO. RUG WILLIAMS FOUNTAIN  
HAND PUMP, 100 FEET HOSE, FIRE  
HAND ENGINEERS, 1 BRICK EXTENSION



C. M. DEDMAN  
Wholes  
Wholesale  
Wholesale

W. FACTORY (PAVED)

ST.

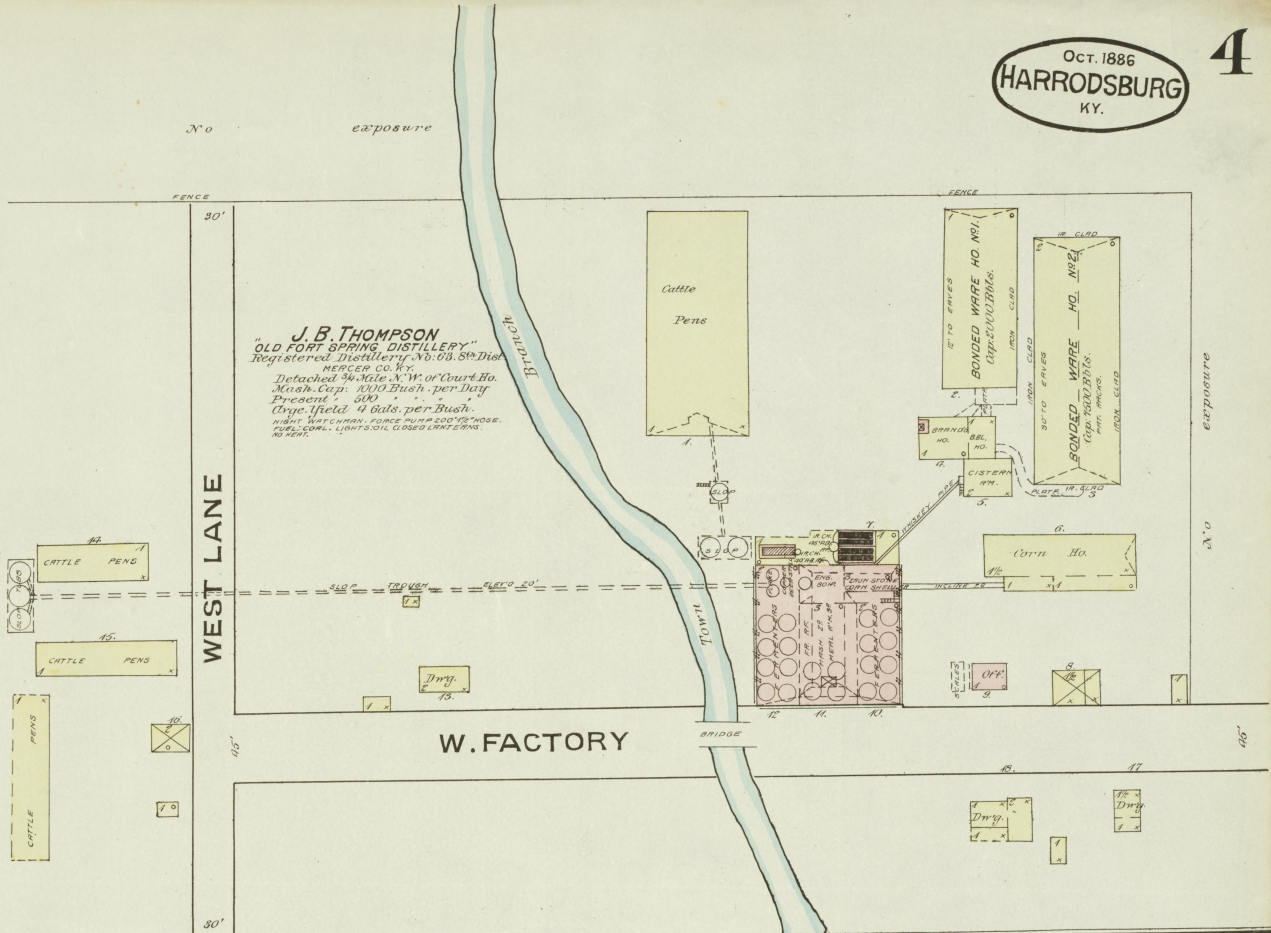
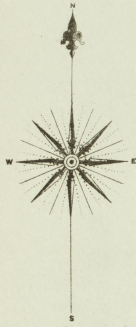
Detached  
PAVED, SOUTH  
N. W. of Court Ho.

Scale of Feet.

N. WEST ST.

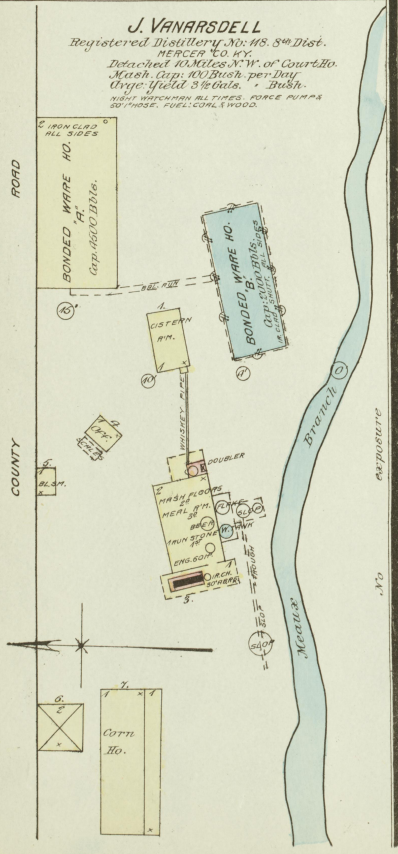
NO EXPOSURE

S. EAST ST.

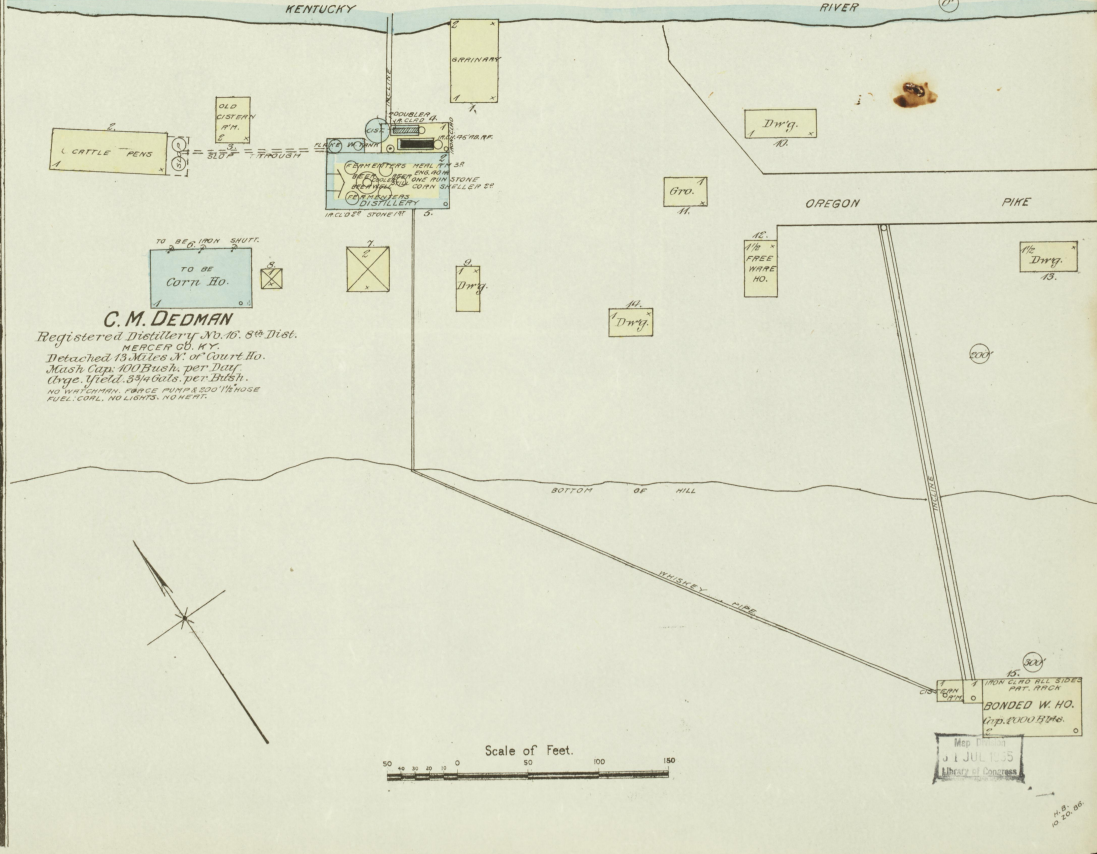


**J. B. THOMPSON**  
"OLD FORT SPRING DISTILLERY"  
Registered Distillery No. 63, 8th Dist.  
MERCER CO. KY.  
Detached 9 1/2 Acs. N.W. of Court Ho.  
Mash Cap. 1000 Bush. per Day  
Produce 300  
Orye. Yield 4 bds. per Bush.  
NIGHT WATCHMAN FORCE MUST SLEEP IN HOUSE.  
FUEL, COAL, LIGHTS, CLOSED DISTRICT.  
NO FEES.

**W. FACTORY**



**J. VANARSDELL**  
Registered Distillery No. 103, 8th Dist.  
MERCER CO. KY.  
Detached 10 Miles N.W. of Court Ho.  
Mash Cap. 1000 Bush. per Day  
Orye. Yield 8 bds. per Bush.  
NIGHT WATCHMAN FORCE MUST SLEEP IN HOUSE.  
FUEL, COAL, LIGHTS, CLOSED DISTRICT.

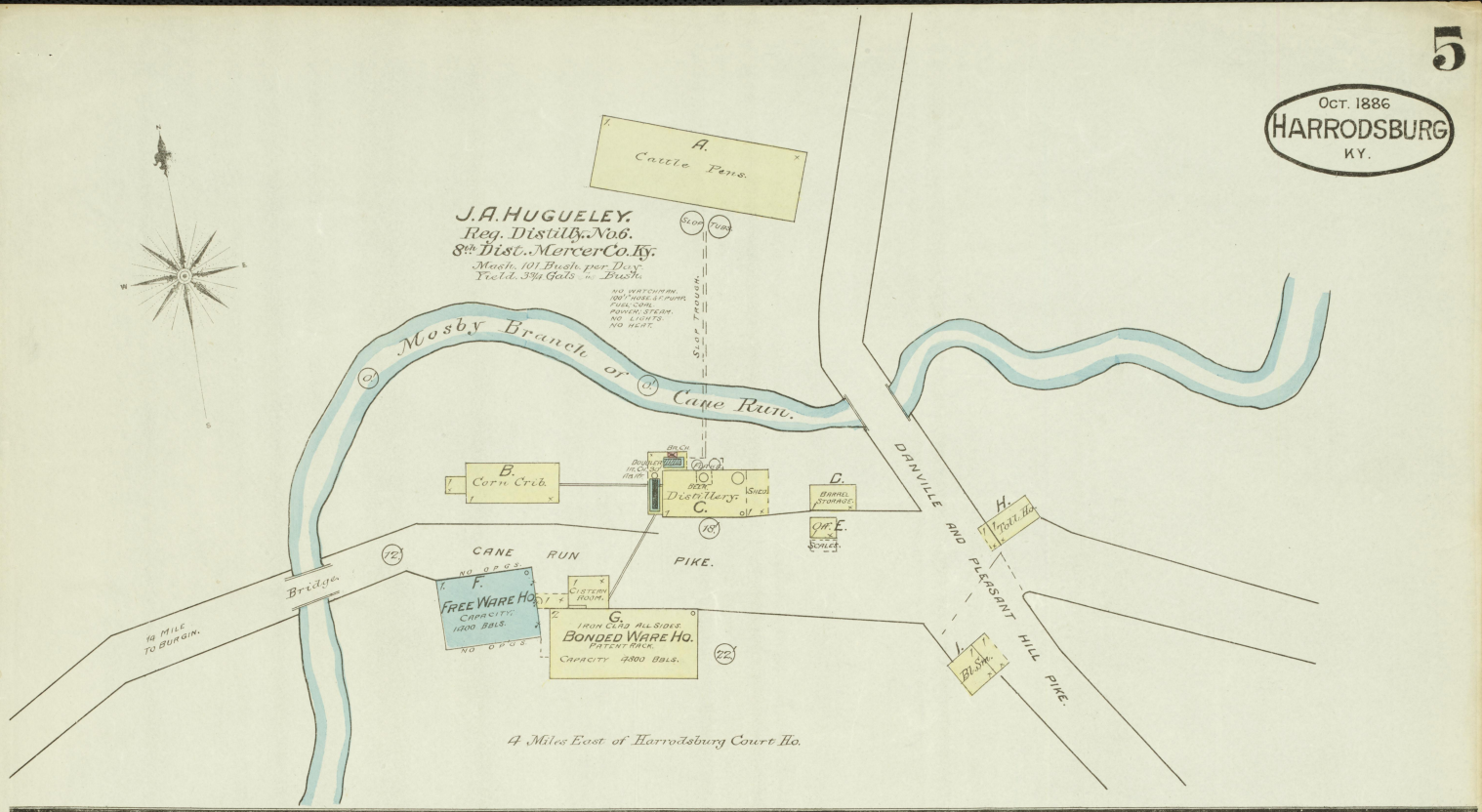
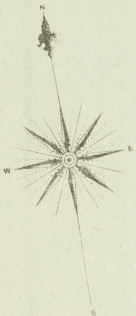


**C. M. DEDMAN**  
Registered Distillery No. 10, 8th Dist.  
MERCER CO. KY.  
Detached 1 1/2 Miles N.W. of Court Ho.  
Mash Cap. 1000 Bush. per Day  
Orye. Yield 3 1/4 bds. per Bush.  
NIGHT WATCHMAN FORCE MUST SLEEP IN HOUSE.  
FUEL, COAL, LIGHTS, CLOSED DISTRICT.

Scale of Feet.  
0 50 100 150

NEW LIBRARY BUILDING  
PAT. MAR. 28 1878  
**BONDED W. HO.**  
No. 103, 8th Dist.  
MERCER CO. KY.  
JUL 1 1885  
Library of Congress

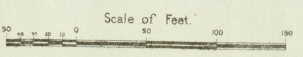
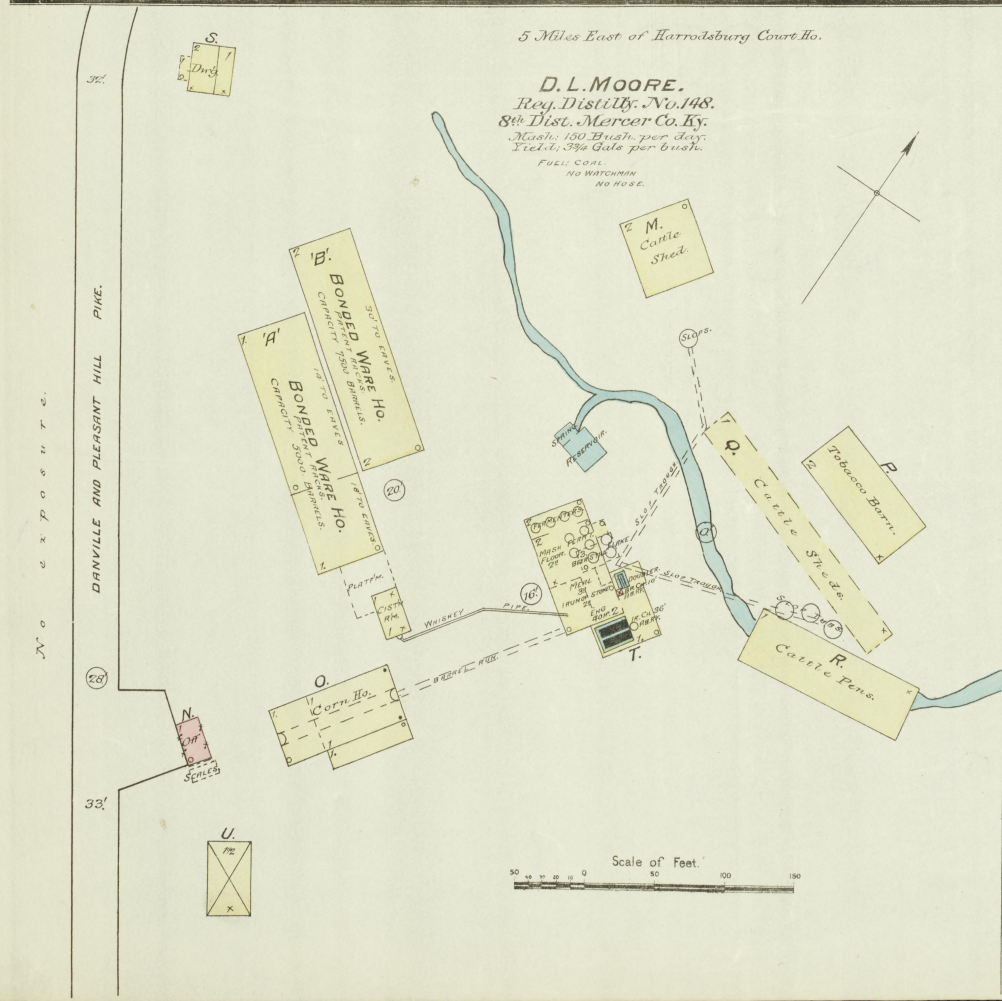
OCT. 1886  
**HARRODSBURG**  
KY.



5 Miles East of Harrodsburg Court Ho.

**D.L. MOORE.**  
Reg. Distil'ry. No. 148.  
8th Dist. Mercer Co. Ky.  
Mash. 150 Bush. per Day.  
Yield. 3 3/4 Gals. per Bush.

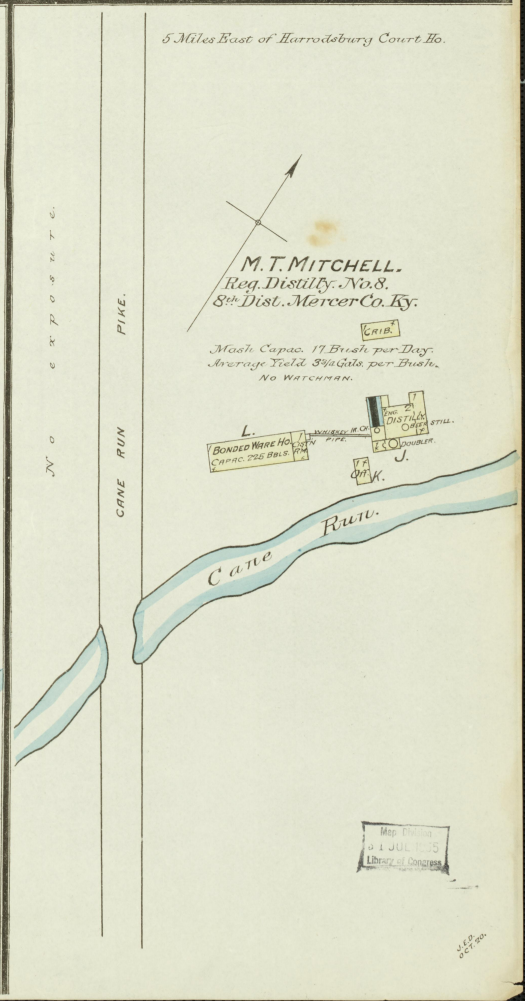
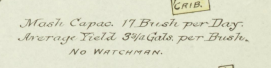
FUEL COAL  
NO WATCHMAN  
NO HOSE



5 Miles East of Harrodsburg Court Ho.

**M.T. MITCHELL.**  
Reg. Distil'ry. No. 8.  
8th Dist. Mercer Co. Ky.

Mash. Capas. 17 Bush. per Day.  
Average Yield. 3 3/4 Gals. per Bush.  
NO WATCHMAN.



Map of the  
1 JUL 1885  
Library of Congress