

INDEX

STREETS	NUMBER	SECOND	THIRD	FOURTH	FIFTH
A Street, see Rowley Ave.		325-329	3	Farmers' Hotel,	2
B Street	1	331-335	2	Fire Department,	2
Briggs	1	335-337	2	Fryer, G., Sons, Tannery,	5
Court	2 & 3	338-411	1	H	
Dugan	4	391-314	4	Heinrich Chapel, M. E. Church,	5
Front	101-144	401-425	2	Hotel St. Charles,	2
Main	2 & 3	425-613	1	Howell, C. M., Pearl Button	5
Market	2 & 3			Blank M'F'g.	5
John	1			M. E. Church, Heinrich Chapel	5
				(North),	2
				(South),	3
				Post Office,	2
				Presbyterian Church,	2
				Public School,	1
				Riverside Seminary,	4
				Standard Oil Co.,	4
				Stein, A. J., Buckhorn Tannery	1
				Vanceburg Canning Co.,	3
				Electric Light Co.,	3
				Loose Leaf W. H.,	5
				Co. Toh. W. H.,	5
				Mills, Flour Mill,	5
				Co., J., & Son, Flaming Mill,	1
				Sawd Plan'g Mill,	5
				Dugan, W. W., Tobacco Ware-	5
				houses & Stave Mill, 3 & 4	2
				Webb, J. W., & Sons, Feed,	2



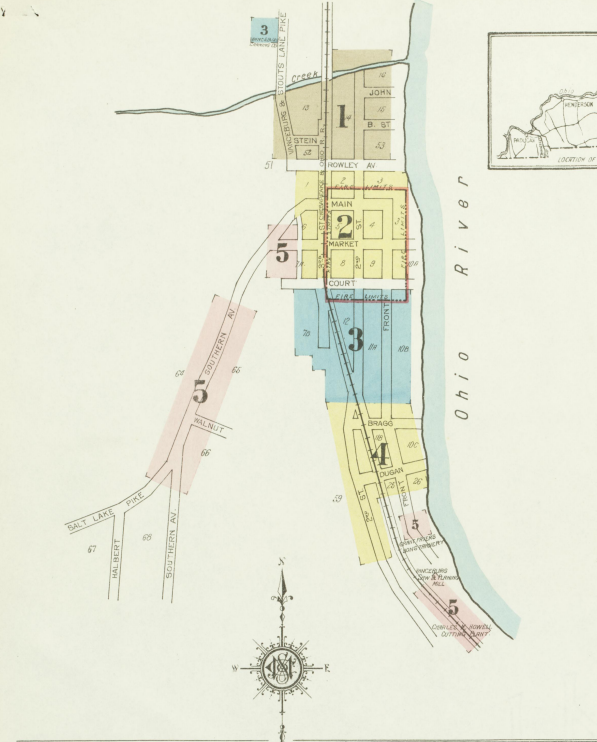
WATER FACILITIES:
Public & private wells & cisterns also Union River.

FIRE DEPT.:
Unorganized, 1-gallon Fire Engine, capacity 200 gallons per min. - 1 hand hose reel, with 100' 2 1/2" hose - 1 axe & ladder truck - alarm by bell on Court St.

Grades nearly level, principal streets graded.
Public lights electric.

KEY

- FIRE MILL IN ANY ROOF
- FIRE WALL IN ANY ROOF
- WOOD CEILING IN ANY ROOF
- FRAME PARTITION
- OPENING WITH ROOF
- IRON "STANDARD"
- WINDOW IN STORY
- WINDOW IN 2ND STORY
- WINDOW IN 3RD STORY
- WINDOW IN 4TH STORY
- WINDOW IN 5TH STORY
- WINDOW IN 6TH STORY
- WINDOW IN 7TH STORY
- WINDOW IN 8TH STORY
- WINDOW IN 9TH STORY
- WINDOW IN 10TH STORY
- WINDOW IN 11TH STORY
- WINDOW IN 12TH STORY
- WINDOW IN 13TH STORY
- WINDOW IN 14TH STORY
- WINDOW IN 15TH STORY
- WINDOW IN 16TH STORY
- WINDOW IN 17TH STORY
- WINDOW IN 18TH STORY
- WINDOW IN 19TH STORY
- WINDOW IN 20TH STORY
- WINDOW IN 21TH STORY
- WINDOW IN 22TH STORY
- WINDOW IN 23TH STORY
- WINDOW IN 24TH STORY
- WINDOW IN 25TH STORY
- WINDOW IN 26TH STORY
- WINDOW IN 27TH STORY
- WINDOW IN 28TH STORY
- WINDOW IN 29TH STORY
- WINDOW IN 30TH STORY
- WINDOW IN 31TH STORY
- WINDOW IN 32TH STORY
- WINDOW IN 33TH STORY
- WINDOW IN 34TH STORY
- WINDOW IN 35TH STORY
- WINDOW IN 36TH STORY
- WINDOW IN 37TH STORY
- WINDOW IN 38TH STORY
- WINDOW IN 39TH STORY
- WINDOW IN 40TH STORY
- WINDOW IN 41TH STORY
- WINDOW IN 42TH STORY
- WINDOW IN 43TH STORY
- WINDOW IN 44TH STORY
- WINDOW IN 45TH STORY
- WINDOW IN 46TH STORY
- WINDOW IN 47TH STORY
- WINDOW IN 48TH STORY
- WINDOW IN 49TH STORY
- WINDOW IN 50TH STORY
- WINDOW IN 51TH STORY
- WINDOW IN 52TH STORY
- WINDOW IN 53TH STORY
- WINDOW IN 54TH STORY
- WINDOW IN 55TH STORY
- WINDOW IN 56TH STORY
- WINDOW IN 57TH STORY
- WINDOW IN 58TH STORY
- WINDOW IN 59TH STORY
- WINDOW IN 60TH STORY
- WINDOW IN 61TH STORY
- WINDOW IN 62TH STORY
- WINDOW IN 63TH STORY
- WINDOW IN 64TH STORY
- WINDOW IN 65TH STORY
- WINDOW IN 66TH STORY
- WINDOW IN 67TH STORY
- WINDOW IN 68TH STORY
- WINDOW IN 69TH STORY
- WINDOW IN 70TH STORY
- WINDOW IN 71TH STORY
- WINDOW IN 72TH STORY
- WINDOW IN 73TH STORY
- WINDOW IN 74TH STORY
- WINDOW IN 75TH STORY
- WINDOW IN 76TH STORY
- WINDOW IN 77TH STORY
- WINDOW IN 78TH STORY
- WINDOW IN 79TH STORY
- WINDOW IN 80TH STORY
- WINDOW IN 81TH STORY
- WINDOW IN 82TH STORY
- WINDOW IN 83TH STORY
- WINDOW IN 84TH STORY
- WINDOW IN 85TH STORY
- WINDOW IN 86TH STORY
- WINDOW IN 87TH STORY
- WINDOW IN 88TH STORY
- WINDOW IN 89TH STORY
- WINDOW IN 90TH STORY
- WINDOW IN 91TH STORY
- WINDOW IN 92TH STORY
- WINDOW IN 93TH STORY
- WINDOW IN 94TH STORY
- WINDOW IN 95TH STORY
- WINDOW IN 96TH STORY
- WINDOW IN 97TH STORY
- WINDOW IN 98TH STORY
- WINDOW IN 99TH STORY
- WINDOW IN 100TH STORY

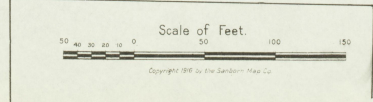


Ohio River



ONLY FEED MILL BEING OPERATED
 POWER: KEES ENG. VERT. STEEL
 LIGHTS: ELECTRIC - PORTALS & BUCKETS
 INTERESTED

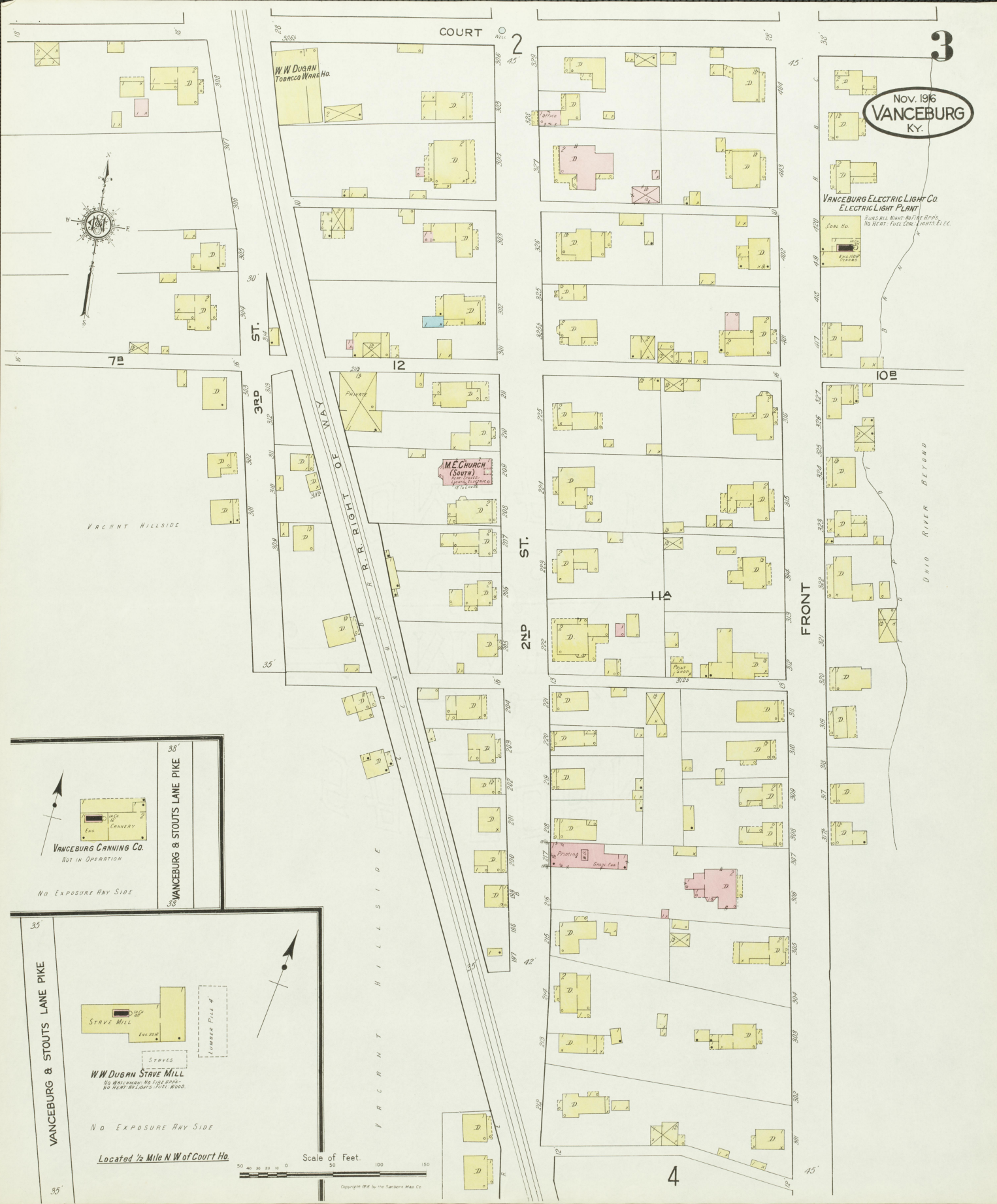
MACHINERY
 1ST FLOOR: PATTERNS, CRACKING, 1 FEED MILL
 2ND FLOOR: 5 DOUBLE SET OF ROLLS, 2 FLOOR PANS
 3RD FLOOR: 1 SAW
 4TH FLOOR: 2 PLAN SISTERS, 1 BURN DUSTER
 5TH FLOOR: 3 ROUND REELS
 6TH FLOOR: 1 SEPARATOR, 1 SICKLER, 1 BURN
 REEL, 2 CLEANERS & PURIFIERS



Nov. 1916
VANCEBURG
KY.

VANCEBURG ELECTRIC LIGHT CO.
ELECTRIC LIGHT PLANT
PUMPS ALL WATER IN THE TOWN
NO HEAT. FUEL CON. 1.000000 E.T.C.

OHIO RIVER BEYOND



VANCEBURG & STOUTS LANE PIKE
VANCEBURG CANNING CO.
NOT IN OPERATION
NO EXPOSURE ANY SIDE

VANCEBURG & STOUTS LANE PIKE
W.W. DUGAN STAVE MILL
STAVES
LUMBER PILE #
NO EXPOSURE ANY SIDE
Located 1/2 Mile N.W. of Court Ho.

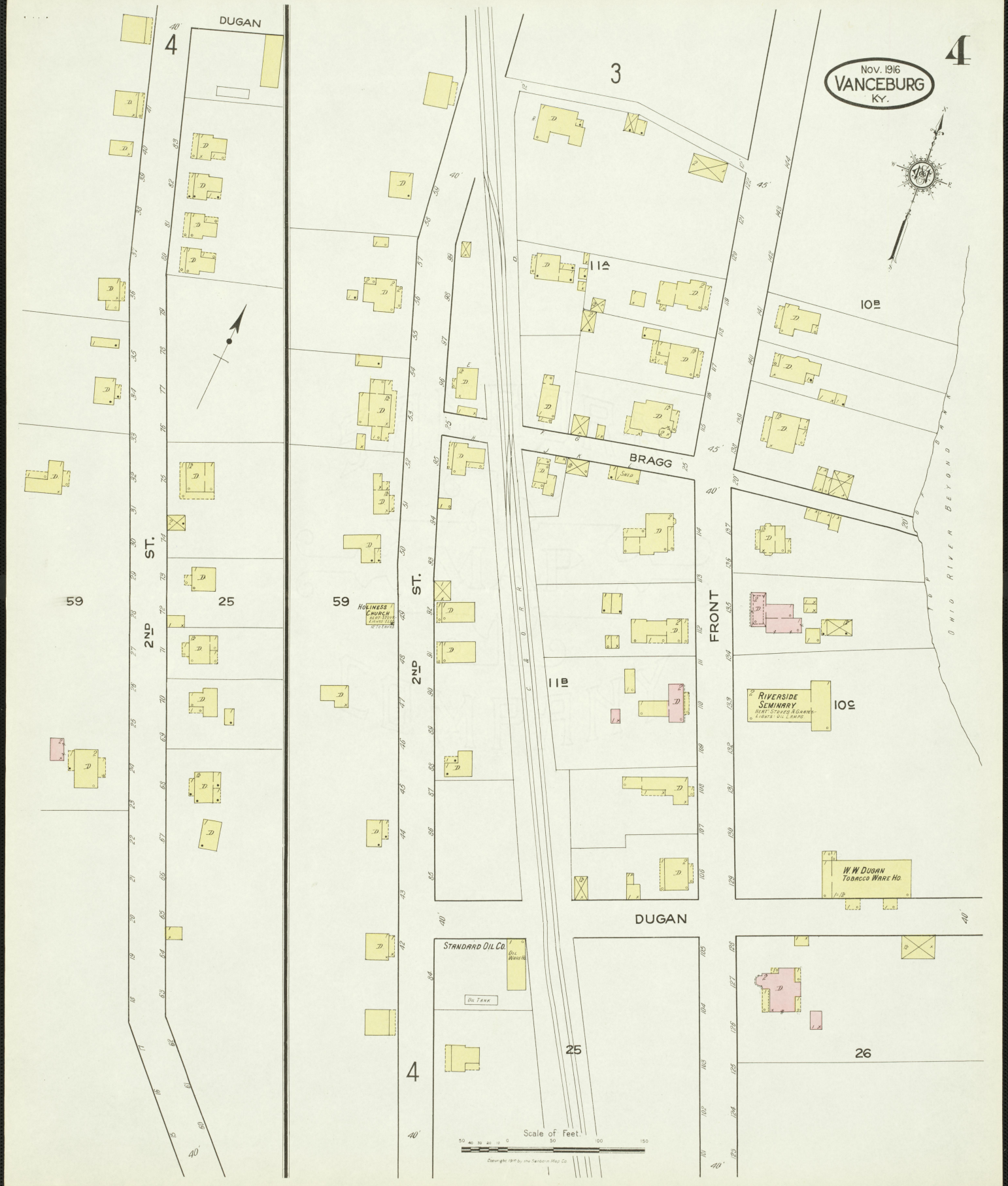


Nov. 1916
VANCEBURG
Ky.

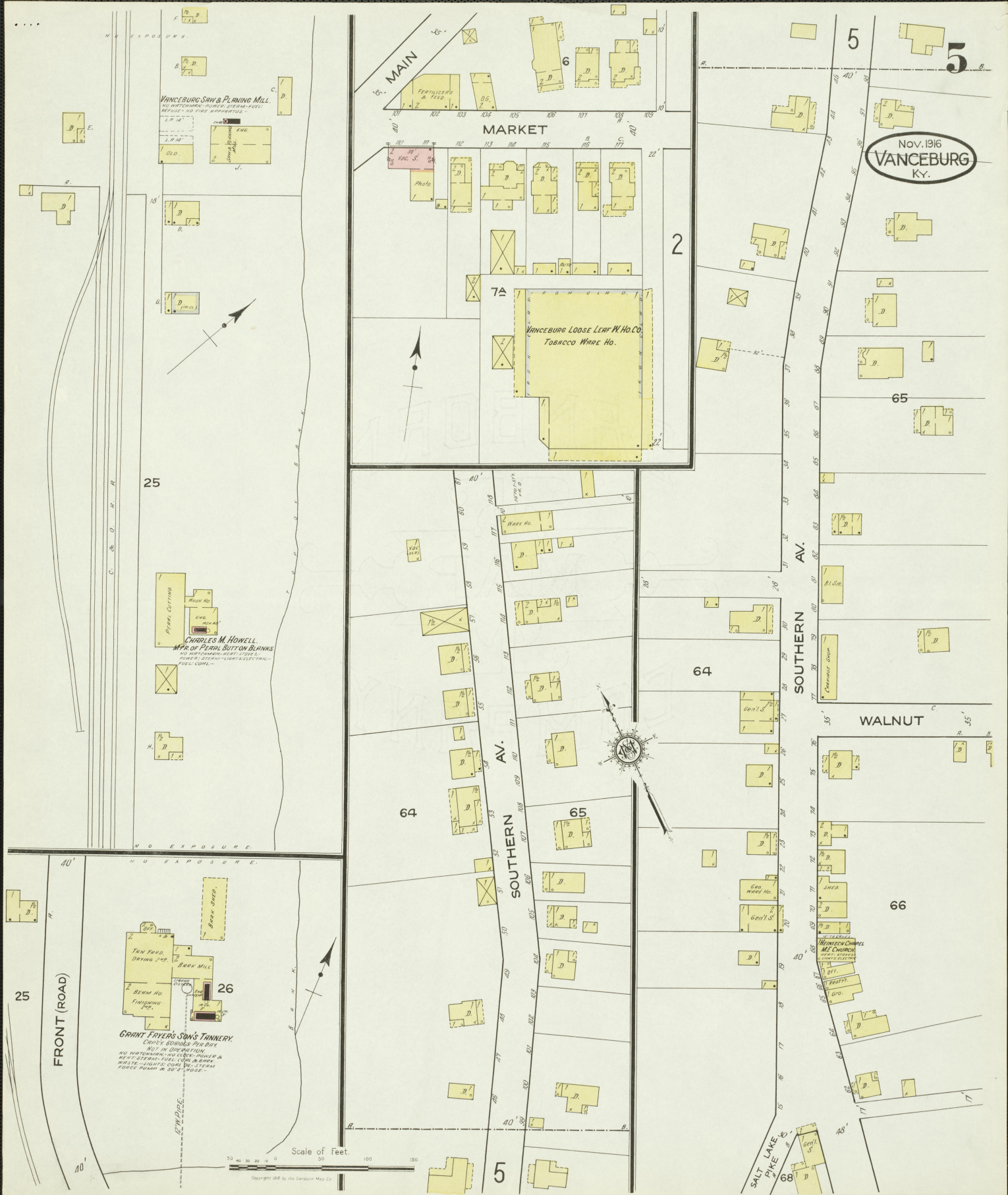
4



OHIO RIVER BEYOND BRIDGE



Scale of Feet
50 40 30 20 10 0 50 100 150
Copyright 1916 by the Sanborn Map Co.



Nov. 1916
VANCEBURG
 Ky.