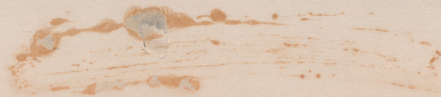
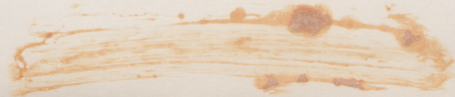




GREENBELT MARYLAND
RESETTLEMENT ADMINISTRATION
DIVISION OF SUBURBAN RESETTLEMENT

PA 547-19

Greenbelt, MD, RA 0547-ZB-1
Aerial View



RA0547ZB-1--GREENBELT PANORAMA.

8
This design for a suburban community, as depicted by architects from the town planner's blue-prints, shows the unique layout of one of the Resettlement Administration suburban communities. Because the land forms a natural crescent-shaped plateau, planners have built the town in the form of a horse-shoe the houses arranged to encircle the village green where stores, schools, post office, inn, and community center are located. Surrounding the town is a large belt of woods and farm land which affords recreational areas and contains farms for neighboring farmers as well as allotment gardens for residents of the town. The two other suburban communities, now under construction near Cincinnati and near Milwaukee, are designed differently, -- more on the Main-Street idea. Notice in the above photo, the lake whose tip forms a wading pool and reaches practically into the center of the town. (Resettlement Administration Photo)