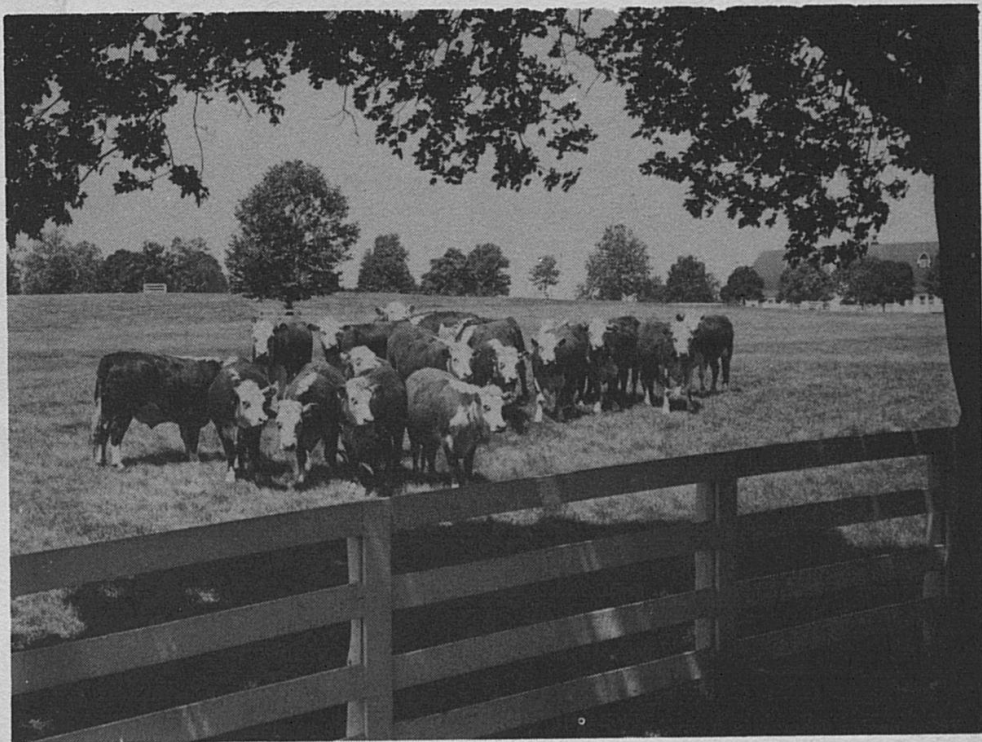


Commercial Feeds in Kentucky
1960



Regulatory Bulletin 166
Kentucky Agricultural Experiment Station
University of Kentucky
Lexington

FEED AND FERTILIZER DEPARTMENT
KENTUCKY AGRICULTURAL EXPERIMENT STATION

Bruce Poundstone, Head of Department

Robert Mathews, Asst. Adm. & Chief Inspector

Guy P. Zickefoose, Auditor-Inspector

*David M. Daugherty, Registration Inspector

W. J. Huffman, Acting Registration Inspector

FIELD INSPECTION

Otis R. Wheeler
M. M. Davis

Neville Hulette

Noel J. Howard
W. M. Routt

LABORATORY

Harry R. Allen
Valva Midkiff
J. T. Adair
Paul R. Caudill

J. A. Shrader
Dewey H. Newman, Jr.
**Jo Ann Dawson
John Ellis

Lelah Gault
Norma Holbrook
Robert N. Price
E. F. Asher

CONTENTS

	Page
Introduction	3
Estimated Tonnage of Sales by Class of Feed, Kentucky 1960	4
Companies on Reporting System, April 1, 1961	5
Recommendations for Registration and Preparation of Labels for Medicated Feeds	8
Drugs & Feed Additives	14
Urea	16
Method of Calculating the Analysis of a Feed Mixture	17
Average Composition of the More Common Feedstuffs	18
Miscellaneous Samples Analyzed 1947-1960	20
Table 1 - Report of Official Samples Analyzed 1960	21
Table 2 - Samples Classified as "Not Passed"	30

*David M. Daughterty on leave of absence since May 1, 1959
**Resigned in 1960

This report compiled and prepared by Robert Mathews and Bruce Poundstone.
Analytical data by the laboratory staff.

INTRODUCTION

This bulletin contains the results of inspection and analyses of samples of commercial feeds sold in Kentucky during the calendar year 1960, and other information helpful to those interested in this field.

During this period 580,652 tons of commercial feed were reported as distributed in the state of Kentucky. Of this tonnage approximately three-fourths was mixed feed or formula feed and one-fourth straight products, such as soybean products, wheat products, etc. This tonnage is about the same that we have had for a number of years. A table showing the tonnages of feeds sold by type by years for most of the years since 1920 is available by writing to the Department of Feed and Fertilizer.

During the year 1960, 3,699 samples of feed were secured by the inspectors for analysis and 84% of these passed with 16% not passing. The laboratory ran 4,999 determinations for protein, 5,057 determinations for fat and 4,531 determinations for fiber. A large number of determinations were made for different minerals with 852 determinations for salt. There were 839 determinations made for non-protein nitrogen from urea. The total number of analyses made in the laboratory in 1960 was 19,905.

In the last few years drugs have become very common in feeds and the laboratory made 565 determinations for drugs.

The farmer who is using medicated feeds should be very careful and feed the feed according to the directions and no medicated feed should be fed to any animal except the animal designated on the label.

Feed manufacturers who wish to register medicated feeds in Kentucky should follow the "Recommendations for Registration and Preparation of Labels for Medicated Feeds" which is listed in this bulletin on page 8.

ESTIMATED TONNAGE OF SALES BY CLASS OF FEED,
KENTUCKY, 1960

<u>Mixed Feed</u>	<u>Tons</u>
Calf Feed	5,198
Cattle Feed	19,776
Dairy Feed	94,525
Dog & Cat Feed	12,047
Horse & Mule Feed	12,100
Mineral Feed	6,637
Pig & Hog Feed	88,563
Poultry Mashcs	160,275
Rabbit Feed	1,610
Scratch Feed	10,069
Sheep Feed	1,801
Stock Feed	1,514
Turkey Mashcs	9,790
Miscellaneous Mixed Feed	<u>13,153</u>
TOTAL MIXED FEED	<u>437,058</u>
<u>Straight Materials</u>	<u>Tons</u>
Alfalfa Products	2,017
Animal Products	9,984
Barley Products	301
Brewers Products	2,146
Corn Products	27,507
Cottonseed Products	9,716
Distillers Products	4,986
Linseed & Flax Products	240
Molasses	19,849
Oat Products	1,653
Soybean Products	20,832
Wheat Products	41,083
Miscellaneous Products	<u>3,280</u>
TOTAL STRAIGHT MATERIAL	<u>143,594</u>
GRAND TOTAL	<u>580,652</u>

COMPANIES ON REPORTING SYSTEM, APRIL 1, 1961

Albers Milling Company
 All-In-One Feeds, Inc.
 Allied Food Distributors
 Allied Industries, Inc.
 Allied Mills, Inc.
 American Crystal Sugar Co.
 Anderson & Spilman
 Apex Feed & Supply (s)
 Archer-Daniel-Midland Co.
 Armour and Company
 C. T. Ashley Company
 Aubrey Feed Mills, Inc.
 August Moldenhauer Mill
 Aylor & Meyer Company

Baber's Vis-Vita Sales, Inc.
 Bagdad Roller Mills
 Barry Carter Milling Co.
 Barton Distilling Co.
 Bates Farm Supply (b)
 The Baugh & Sons Co.
 Bay State Milling Co.
 The Beardstown Mills Co.
 Best Feeds & Farm Supplies, Inc.
 Big Four Feed Store (s)
 Big Sandy Wholesale Company
 L. A. Black
 Blatchford Calf Meal Co.
 Blenda Life, Inc.
 Bobb Brothers
 The Borden Company
 The Boswell Company
 Botkins Grain & Feed Co.
 Bradley & Baker
 Bremco Alfalfa Mills, Inc.
 Brennan Packing Co.
 The Brode' Corp.
 Brown-Forman Distillers Corp.
 The Buhler Mill & Elevator Co.
 Buhner & Company, Inc.
 The Buckeye Cellulose Corp.

Cadiz Milling Company
 The Carey Salt Co.
 Cargill, Incorporated
 Carson Food Company
 Cashman's Leghorn Farm
 Central Alfalfa, Inc.
 Central Soya Company
 Chelsea Milling Company
 Clark Milling Co.
 Cleveland Milling Co.
 Clinton Foods, Inc.
 Clinton Milling Co., Inc.
 Cocke and Company
 H. C. Cole Milling Co.
 Colonial Stores, Inc.
 Colorado Milling & Elevator Co.

Columbian Hog & Cattle Powder Co.
 Columbus Canning Company
 Commander-Larabee Milling Co.
 Consolidated Flour Mills Co.
 Consolidated Products Co.
 Cooperative Mills, Inc.
 Corn Products Company
 Chas. M. Cox Company
 Crestwood Farmers Supply Center
 Culton's Seed Cleaner

Dearborn Mills
 Decatur Cotton Oil Co.
 Decatur Elevator Co.
 Decatur Milling Co., Inc.
 Diamond Crystal Salt Co.
 Dixie Grain Co., Inc.
 Dixie Mills Company
 Dixie Portland Flour Co.
 Dixie Portland Flour Mills (Tenn.)
 Dixie Portland Flour Mills (Kan.)
 Dixie Treat Sales Co.
 Doane Feed Products Company
 Dyersburg Oil Mill Co.

The Early & Daniel Co.
 Eckhart Milling Company
 Elam Grain Company
 The F. L. Emmert Co.
 John W. Eshelman & Sons
 Eshelman Grain Co.
 Evans Industries, Inc.
 Evans Milling Co., Inc.
 Excelsior Milling Co.

Fabro, Inc.
 Farm Chef Feeds
 Farm Service, Inc.
 Farmers Elevators, Inc.
 Farmers Friend Mineral Co.
 Farmers Hay & Seed Co. (b)
 Farmers Service (b)
 Farmers Supply Co.
 Ferncliff Feed & Grain Co. (d)
 Finch Packing (d)
 Flambeau Milling Co.
 Fort Negley Mills
 Foster Canning Co.
 Frosty Morn Meats
 Henry Fruechtenicht Co.
 Fuhrer-Ford Milling Co.
 Funk Bros. Seed Co.

Garden Street Mill & Elevator
 General Foods Corporation
 Corn Mill Division
 Gaines Division
 General Mills, Inc.

(s) Small packages only, (b) Bulk sales only, (m) Molasses only, (d) Dog food only

Goldenrod Oil Meal Sales Co.
The Great Western Sugar Co.
Green County Milling Co. (b)
Gwinn Brothers Co.

Hales & Hunter Company
Peter Hand Foundation (s)
Happy Valley Mills
Harpeth Mills
J. M. Harris & Co., Inc.
Hartsville Milling Company
Harvest Brand, Inc.
Haydon Mill & Grain Co. (s)
Hayward, Inc.
Heckle Bros.
Dr. Heinz Company
Helmets & Berry Feed Co. (m)
Hi-Life Packing Company
Highland Products, Inc. (s)
Hill Packing Company
Hoham Laboratories, Inc.
Hollar & Mardis
Howdy Distributing Co.
Hudson's Farm Service (b)
The Hunter Milling Co.

Igleheart Bros. Div.
Illinois Cereal Mills, Inc. (b)
Illinois Soy Products Co.
Independent Oil Mill, Inc.
Inland Mills, Inc.
International Milling Co.
International Salt Co., Inc.
The Ismert-Hincke Milling Co.

Jackson Co. Farm Bureau Coop. Ass'n.
Jet Products, Inc.

The Kansas Milling Company
Keco Milling Company
Kellogg Company
Spencer Kellogg & Sons, Inc.
The Kennel Food Supply Co., Inc. (s)
Kentucky By-Products Corp.
Kentucky Chemical Industries, Inc.
Keynes Brothers
H. C. Knoke & Co.
Kraft Foods

LaCross Milling Co., Inc.
Lake County Oil Mills
Lake States Yeast Corp.
Edmond J. Lang
Lewisburg Roller Mills (b)
Lexington Roller Mills, Inc.
Life Guard Feeds
Light Grain & Milling Co., Inc.
Limestone Products Corp. of America
Linden Mill (d)
Lipscomb Farm Supply (b)
Lose Bros.
L. B. Lovitt & Co.

Magic Feed Mills, Inc.
Marblehead Lime Co.
Marco Mills, Inc.
Marianna Sales Co.
Marion Milling Co.
Markin Feed Co.
Martha White Flour Mills
Martha White Flour Mills of W. Va.
Martin Sales Co.
Master Feed & Seed Co., Inc.
Mayfield Milling Co., Inc.
McKnight-Keaton Grocery
McMillen Feed Mills
Mennel Milling Co.
O. W. Meyer Laboratories
Middlesboro Milling Co. (s)
Midland Flour Milling Co.
Midwest Alfalfa Blenders, Inc.
Midwest Brewers Yeast Co.
Midwest Feeds
Mineral Products Co.
Minute Maid Corp.
Model Mills
Mohawk Roller Mills
Moore-Lowry Flour Mills, Inc.
Moorman Manufacturing Co.
The Mor-Milk Co.
John Morrel & Co.
Morristown Milling Co.
Morton Salt Company
Mowat, Wilson & Co.
Mt. Sterling Hatchery (b)
Murphy Products Co.
Mutual Products Co. (s)
Myers & Clark Milling Co., Inc.
Myzon, Inc.

H. Nagel & Son
Nashville Cotton Oil Mill Corp.
National Alfalfa Dehyd. & Milling Co.
National Biscuit Co.
National Distillers Product Corp.
National Molasses Co.
National Oats Company
National Vitamin Products Co.
Nebraska Consolidated Mills Co.
Neumond, Inc.
The North Amer. Trading & Import Co.
Chas. Nunn & Sons Milling Co.
Nutrena Mills, Inc.

Oelwein Chemical Co., Inc.
Ohio Valley Soybean Cooperative
Orleans Candy Company
Orleans Canning Co.
Owensboro Grain Co.

Pacific Molasses Co.
Packers By-Products Co.
Pan American Mills (s)
Park & Tilford Distillers Corp.
Philip R. Park, Inc.
Pedrick Laboratories

Pendleton County Mills
 Penick & Ford, Ltd., Inc.
 Perfection Foods Co.
 Pillsbury Company
 Pittsburgh Plate Glass Co.
 Planters Manufacturing Co.
 Provico Feeds & Concentrates
 Publicker Chemical Corp.
 Publicker Industries, Inc.

The Quaker Oats Co.
 Quinnmenhaden Fisheries

Ralston Purina Company
 Lloyd Reiterman
 Riteway Milling Co.
 Riverside Molasses Co.
 Robinson Milling Co. (m)
 Rome Oil Mill
 B. P. Rose & Co., Inc.
 The Ross Milling Co.
 Russell Grain Company
 Russell-Miller Milling Co.
 Ryde & Company

S & O Products, Inc.
 Sandusky Brothers (s)
 Salyersville Wholesale Co.
 Charles W. Schenk & Sons (s)
 Schenley Distillers, Inc.
 John Schlemmer
 Scientific Milling Co.
 The Scott County Milling Co.
 Joseph E. Seagram & Sons, Inc.
 Security Food Company
 Security Mills, Inc.
 Shellabargers, Inc.
 The Sherwin-Williams Co.
 Sikeston Cotton Oil Mill
 Simmons Milk Products, Inc.
 The W. J. Small Co. Div.
 J. Allen Smith
 Smith Packing Company
 Southern Canning Sales, Inc.
 The Southern Cotton Oil Co. (Ala.)
 The Southern Cotton Oil Co. (Tenn.)
 Southern Products Co., Inc.
 Southern States Bowling Green Coop.
 Southern States Boyle Coop. (b)
 Southern States Campbellsville (b)

Southern States Hardin Coop.
 Southern States Lebanon Coop. (b)
 Southern States Leitchfield Coop.
 Speciality Food Company
 Specifide, Inc.
 Spen-Well Feed Company
 A. E. Staley Manufacturing Co.
 Standard Brands, Inc.
 Standard Feed Milling Co., Inc.
 Standard Products Co., Inc.
 F. W. Stock & Sons, Inc.
 Suni-Citrus Products Co.
 Sunshine Feed Mill
 Sunshine Molasses Co.
 Supreme Mills
 Sweet Feed, Inc.
 Swift & Company (Chicago)
 Swift & Company (Memphis)
 Swift & Company - Oil Mill
 Swift & Company - Pard Food Dept.

Teater-Cassity-Wade (m)
 The Topeka Flour Mills Corp.
 Trenton Cotton Oil Company
 Tri-State Molasses Company

Union Sales Corporation
 United Salt Corporation
 Usen Canning Company

Valier & Spies Milling Co.
 Varner Mills Company
 Vets Div. Perk Foods Co.
 Virginia-Carolina Chemical Corp.
 Vita Fresh Dog Food Corp.
 Vitamineral Products Co.
 VyLactos Laboratories, Inc.

W & W Hamstery
 Walters & Thompson (m)
 Weisenberger Sanitary Flour Mills
 Western Condensing Company
 Western Grain Company
 Whitewater Flour Mills Co.
 William Davies Co., Inc.
 Williamstown Roller Mills (b)
 Woolcott Mills, Inc.

Yieldmor Feeds, Inc.

RECOMMENDATIONS FOR REGISTRATION AND PREPARATION
OF LABELS FOR MEDICATED FEEDS

A Medicated Feed is any feed which contains drug ingredients (a) intended or represented for the cure, mitigation, treatment or prevention of disease of animals other than man, or (b) intended to affect the structure or any function of the body of animals other than man. Excepted are feeds which supply antibiotics to the animal at a non-therapeutic level.

A. Information Required on the Label. In addition to the information required for non-medicated feeds, medicated feeds are required to carry the following information in their labeling: (a) the purpose of the medication; (b) directions for use of the feed; (c) the names and amounts of all active drug ingredients; (d) a warning or caution statement for a withdrawal period when required for the particular drug contained in the feed and (e) warnings against misuse. It is suggested that the label include this information in the following form:

1. Net weight.
2. Brand name or trade name.
3. Product name (may include brand name and, for Types 1 and 2, the word "medicated").
4. Purpose (statement of the purpose of the medication and reference to directions for use).
5. Active drug ingredients (list of common names, not trade names, and percentage present, for each drug. Antibiotics are to be expressed in grams per pound and may also be in grams per ton).
6. Guaranteed analysis of the feed.
7. Feed ingredients (common name of each).
8. Name and address of manufacturer or registrant.
9. Detailed feeding directions (to be displayed prominently on either front or reverse side of the label). A check list follows:
 - a. Purpose (if necessary to clarify or amplify the above statement).
 - b. When to feed (specific period necessary for effective use).
 - c. How to feed, or mix for feeding (feeding method to be followed, i. e., free choice, sole ration, intermittent feeding, etc.; mixing directions for premixes, etc., should give proper level of medication for purpose intended).
 - d. Precautions (statement of precautions where misuse of the product may be injurious to animals or man).
 - e. Warning statement (a withdrawal period may be required for safety. With a mixture of drugs, use the longest period). See example below.
 - f. Other feeds (reference may be made to other feeds which have a part in a feeding program for the animal).

Suggested Warning and Caution Statements

1. Acetylaminothiazole for Poultry.
Warning -- Discontinue use at least 1 week before slaughtering birds for food to permit elimination of the drug from food.
2. Aminothiazole (2-Amino-5-Nitrothiazole) for Poultry.
Warning -- Discontinue use at least 1 week before slaughtering birds for food to permit elimination of the drug from the food.
3. Anthelmintics Containing Cadmium Oxide and Cadmium Anthranilate.
Caution -- Consult veterinarian before using in severely debilitated animals.
Warning -- Treated hogs must not be slaughtered for food for at least 30 days following treatment to permit elimination of cadmium residues from food.
4. Arsenicals (Organic, for Poultry and Swine).
Warning -- Do not administer to laying hens. Discontinue use at least 5 days before slaughtering animals for food consumption to permit elimination of the drug from the food.
The above warning concerning laying hens is not required on arsenic preparations that have been shown to leave no residue in eggs.
5. Dienestrol Diacetate for Poultry.
Warning -- Discontinue use at least 24 hours before slaughtering birds for food to permit elimination of the drug from the food.

6. Diethylstilbestrol in Animal Feeds.
Warning -- Discontinue use at least 48 hours before slaughtering animals for food to permit elimination of the drug from the food.
7. Glycarbylamide for Poultry.
Warning -- Do not feed to laying hens in production. Discontinue use at least 4 days before slaughtering birds for food to permit elimination of the drug from the food.
8. Nicarbazin for Poultry.
Warning -- Do not feed to laying hens in production. Discontinue use at least 4 days before slaughtering birds for food to permit elimination of the drug from the food.
9. Nithiazide for Poultry.
Warning -- Do not feed to laying hens in production. Discontinue use at least 24 hours before slaughtering birds for food to permit elimination of the drug from the food.
10. Amprolium for Poultry.
Warning -- Do not feed to laying birds in production. Discontinue medication 4 days before marketing the birds for human consumption.

Required Warning Statements For Drugs Used With Certifiable
Antibiotics

3-Nitro-4-Hydroxyphenyl Arsonic Acid (3-Nitro-4-Hydroxyphenylarsonic Acid)
for Poultry and Swine.

Warning -- Do not administer to laying hens. Discontinue use 5 days before the treated animals are slaughtered for human consumption.

Chlortetracycline for Leptospirosis of Swine.

The following warning is required on preparations containing, per ton of feed, 400 grams of chlortetracycline:

Warning -- Discontinue use 10 days before the treated animals are slaughtered for human consumption.

Dienestrol Diacetate for Poultry.

Warning -- Do not use in laying hens. Discontinue use 24 hours before the treated birds are slaughtered for human consumption.

Diethylstilbestrol for Sheep.

Warning -- Discontinue use 48 hours before the treated animals are slaughtered for human consumption.

3,5-Dinitrobenzamide for Poultry.

Warning -- Do not feed to laying hens. Discontinue use 48 hours before the treated animals are slaughtered for human consumption.

Glycarbylamide (4,5-Imidazole-Dicarboxamide) for Chickens.

Warning -- Do not feed to laying hens. Discontinue use 4 days before the treated chickens are slaughtered for human consumption.

Hygromycin B for Swine.

Warning -- Discontinue use 48 hours before the treated swine are slaughtered for human consumption.

Nithiazide (1-ethyl-3-(5-Nitro-2-Thiazolyl) Urea) for Poultry.

Warning -- Do not feed to laying hens. Discontinue use 24 hours before treated birds are slaughtered for human consumption.

Nystatin for Turkeys.

Warning -- If used in laying hens, eggs are to be used for hatching purposes only.

B. Types of Labels. Labels for medicated complete feeds generally fall into four different types, as follows (sample formats are shown below):

Type 1 is for a feed which contains drug(s) for growth promotion and/or disease prevention, and which is to be fed continuously for an indefinite period. The product name is followed by the word "medicated" in letters at least half as tall as those of the product name. This type of label can be used for any drug-containing feed not included among the other types. Exempted from medicated labeling are feeds which contain non-therapeutic levels of antibiotics (those with less than 50 grams per ton usually qualify), since these are not classed as medicated feeds. Salt to which an antibiotic is added for control of bloat is to carry a medicated (Type 1) label, except when the brand name includes specific disease-control terms, such as "anti-bloat".

Type 2 is for a feed which contains drug(s) at the treatment level, to be fed as the sole ration for a limited period of time. The word "medicated" appears

in the forefront of the product name, in letters of the same size as remainder of product name.

Type 3 is for a feed which contains hormone(s) or hormone-like substances (e.g., diethylstilbestrol). For feeds which contain a hormone plus other drugs, only the hormone is to appear in the product name. The product name "Stilbestrol Mixture" or "Stilbestrol Mixture in Doe's Feed" may be followed by the words, "Medicated for the prevention of _____" (or other statement of purpose) and then followed by the list and amounts of active drug ingredients. Feeds to which iodinated casein is added for stimulating milk production are to carry a hormone-type label (Type 3).

Type 4 is for a feed which contains drug(s) at the treatment level for a specific disease or condition. It differs from Type 2 only in that the product name indicates the purpose of the drug and the word "medicated" thus need not be a part of the product name (e.g., "Pig Wormer"). In labeling feeds which contain anthelmintics, use Type 1 label if feeding is to be continuous, Type 2 if feeding is to be intermittent, and Type 4 in either case if the product name includes the word "wormer".

C. Supplements or Premixes which contain drugs and which are to be diluted by mixing with other feeds before use are also covered by these four types of labels. The type of label to be used in each case will depend upon the purpose of the drug and directions for use of the finished feed after such dilution. If the resulting feed when diluted according to directions will contain non-therapeutic levels and no therapeutic claims are made, Type 1 label will be used, except for feeds containing only antibiotics. If the directions given are such that Type 2 as well as Type 1 can apply, then the Type 2 label must be used. Mixing or feeding directions for one or more uses should be provided on all containers, for wholesale as well as retail distribution (since wholesale products often get into retail channels). The following statement should also be added where applicable: "For other uses, see instructions provided by your supplier."

For supplements which contain only antibiotics, the directions for use determine whether medicated labeling is required. Suppose the supplement contains 400 grams of antibiotic per ton. If directions include dilution to 50 or more grams per ton before feeding, therapeutic claims should be made and the antibiotic(s) guaranteed under "Active Drug Ingredients." However, if directions are to dilute to 20 grams per ton before feeding and no therapeutic claims are made, the supplement is not regarded as a medicated feed.

D. Where to List Antibiotics on a Feed Label.

(a) If therapeutic claims for the antibiotic are made in the statement or purpose, then the antibiotic should be listed among the "Active Drug Ingredients" irrespective of the amount present (even when less than 50 grams per ton).

(b) If the purpose of the antibiotic in the feed is non-therapeutic (i.e., only growth and/or feed efficiency), the antibiotic is not to be listed as an active drug ingredient but the common name of each antibiotic present is to be stated either under "Guaranteed Analysis" or in the list of feed ingredients. The name and amount of each antibiotic should appear under "Guaranteed Analysis" on the label of a premix or supplement which is to be diluted, and such a declaration on the label of a finished feed is also encouraged but not required. The term "antibiotic feed supplement" is no longer acceptable in the list of feed ingredients. The term "Vitamin B12 and antibiotic feed supplement" also will not be acceptable; instead the appropriate term defined under Fermentation Products should be used.

E. Submitting Copy for Registration. It is suggested that typed copy of proposed labeling for medicated feeds be submitted to State and Federal officials for comment before the copy is sent to the printer. This may save the cost of printing unacceptable labels.

Because drugs in feeds may result in tissue residues of the animals which consume the medicated feed, the assay of animal feeds is highly important along with warning statements indicating specific withdrawal times of medicated feeds. No drug or combination of drugs in feeds for animals should be submitted for registration unless a collaboratively tested method for the analysis of the drug in feeds of the type to be used is also submitted.

Code designations of numbers and/or letters may be used in the product name on the label as an aid to identification (see Type 1 label below), but printing in the margin (side-bar labeling) is discouraged. Two-digit numbers should not be used in such code designation, and the code chosen should in no way mislead or confuse the customer.

F. Sample Labels. Examples of the four types of labels and a premix label are shown on pages 12 and 13. The drugs listed on these labels were selected only for illustrative purposes, and it is not intended to imply that they are preferred over other drugs which may be used for the same purpose.

BLUE BIRD
TURKEY GROWER (EI)
Medicated

A preventive against outbreaks of blackhead in turkey flocks when fed according to directions on this label.

Active Drug Ingredient (s)

2-Acetylamino-5-nitrothiazole	0.015%
-------------------------------------	--------

Guaranteed Analysis

INGREDIENTS

Manufactured by
BLUE BIRD FEED MILLS
 MILLVILLE, KENTUCKY
 100 LBS. NET WEIGHT

Type 1 Label

BLUE BIRD
MEDICATED HOG RATION (PDQ)

For the treatment of infectious enteritis in swine when fed as directed on this label.

Active Drug Ingredients

Streptomycin.....	0.075 grams per lb. (as streptomycin sulfate)
Penicillin	0.025 grams procaine penicillin per pound equivalent to 0.0156 grams penicillin G (Master Standard)
Arsanillic Acid	0.01%

Guaranteed Analysis

INGREDIENTS

Manufactured by
BLUE BIRD FEED MILLS
 MILLVILLE, KENTUCKY
 100 LBS. NET WEIGHT

Type 2 Label

BLUE BIRD
0.0011% DIETHYLSTIL-
BESTROL MIXTURE
FOR FATTENING BEEF CATTLE

Feed at the rate of 2 lbs. per animal per day. Each pound contains 5 milligrams diethylstilbestrol.

CAUTION: Use Only as Directed

Active Drug Ingredient:
 Diethylstilbestrol -----0.0011%

Incorporated in
BLUE BIRD STEER FEED

Guaranteed Analysis

INGREDIENTS

Manufactured by
BLUE BIRD FEED MILLS
 MILLVILLE, KENTUCKY
 100 LBS. NET WEIGHT

Type 3 Label

BLUE BIRD
HOG WORMER

For the Removal of Large Roundworms (*Ascaris Lumbricoides*). Follow directions on other side of tag.

Active Drug Ingredient:
 Cadmium Oxide -----0.015%

Guaranteed Analysis

INGREDIENTS

Manufactured by
BLUE BIRD FEED MILLS
 MILLVILLE, KENTUCKY
 100 LBS. NET WEIGHT

Type 4 Label

DRUGS AND FEED ADDITIVES

Tenative

T-6. Certifiable Antibiotics, a special class of drugs, are those antibiotics listed in Section 507 (a) of the Federal Food, Drug, and Cosmetic Act, namely

penicillin
streptomycin
chlortetracycline
chloramphenicol
bacitracin

and any derivative thereof. Examples of derivatives would be dihydrostreptomycin, zinc bacitracin, and tetracycline. When drugs subject to certification are added to animal feeds, data must be available to show the safety and therapeutic efficacy for the claims made in the labeling. This is the significant difference between certifiable products and new drugs. When new drugs are included in a product containing a certifiable antibiotic, the claims for therapeutic efficacy must be established for the combination, and an Antibiotic Form 10 must be filed with the Food and Drug Administration before the product may be legally marketed in interstate commerce. The Antibiotic Form 10 is for all intents and purposes a new drug application with the additional requirements for the establishment of therapeutic efficacy for the product.

T-7. New Drugs are those drugs for which the safety, because of short time in use, has not been completely established. Before feeds containing new drugs can be marketed in interstate commerce, there must be on file with the Food and Drug Administration an effective new drug application for the particular feed. New drug applications are made effective solely on the basis of safety. Therapeutic efficacy is not taken into consideration. Antibiotics which are not subject to certification are handled as new drugs under the Federal Food, Drug, and Cosmetic Act. The Following are new drugs as of October 1960:

amprolium
arsenosobenzene
bithionol and methiotriazamine
dienestrol diacetate
diethylcarbamazine
diethylstilbestrol
enzymes (except pepsin)
hygromycin B
nicarbazin
2-acetyl-amino-5-nitrothiazole
2,4-diamino-5 (p-chlorophenyl) 6-ethylpyrimidine
3,5 dinitrobenzamide
glycarbylamide
hydroxazine hydrochloride
nithiazide
nystatin
oleandomycin
p-ureidobenzeneearsonic acid
reserpine
ronnel
zoalene

Certain drugs cease to be classified as new drugs when, in the opinion of experts qualified to judge the safety of new drugs, sufficient experience has been gained in their use to warrant their classification as not new drugs. These or other substances may be drugs, or even new drugs, under specific conditions of use and representation. The following are not new drugs:

acetyl (p-nitrophenyl) sulfanilamide
amino nitrothiazole
arsanilic acid
atteramin
cadmium anthranilate
cadmium oxide
di-N-butyltin dilaurate
2,2¹ dihydroxy-5,5¹ dichlorodiphenyl-methane
dinitrophenylsulfonylethylenediamine
dried rumen bacteria
dynafac
erythromycin thiocyanate
furazolidone
iodinated casein
menadione sodium bisulfite
nicotine
3-nitro-4-hydroxyphenyl arsonic acid
nitrofurazone
nitrophenide
4-nitrophenyl-arsonic acid
oxytetracycline
para aminobenzoic acid
pepsin
phenothiazine
piperazine
piperazine dihydrochloride & monohydrochloride
piperazine hexahydrate
piperazine phosphate monohydrate
piperazine sulfate
sodium arsanilate
sodium fluoride
sodium or potassium salt of para aminobenzoic acid
sodium propionate
sulfaquinoxaline

T-8. Feed or food additive refers to any substance which becomes a component of or affects the characteristics of a feed or food if such substance is not generally recognized, among experts qualified by scientific training and experience to evaluate its safety, as having been adequately shown through scientific procedures to be safe under the conditions of its intended use. Excepted are substances having "prior sanction" and pesticide chemicals under certain conditions.

UREA

The following information may be of some help to manufacturers and feeders using urea.

Urea is a white crystalline powder made by combining ammonia and carbon dioxide under pressure in equipment that will withstand high temperature.

Urea contains 46.5% nitrogen, which is equivalent to 291% protein. The commercial product "262" Feed Compound, is urea which has been diluted with other materials to prevent caking, and contains 42% nitrogen which is equivalent to 262% protein. The addition of 1 percent of this material to a dairy feed is equivalent to adding 2.62% protein. Besides urea's protein equivalent value, one must also consider its lack of energy value as compared to the common high protein feeds. An example of this, if the nitrogen in urea is used as efficiently as the nitrogen in high protein feeds, it will require approximately 14 pounds of urea, plus 100 pounds of grain to replace 100 pounds of soybean oilmeal.

Urea, when used as an ingredient in feeds sold in Kentucky is shown in the guaranteed analysis as follows: Crude Protein _____%. This includes not more than _____% equivalent crude protein from non-protein nitrogen. Crude Fat _____%. Crude Fiber _____%. One percent of "262 Feed Compound" would be 2.62% equivalent protein from non-protein nitrogen. Urea should be shown as an ingredient under "Ingredients".

Cattle, sheep, and goats are able to convert urea to a usable form through the action of micro-organisms in the rumen. The organisms convert the nitrogen of urea to protein in their cell bodies which are in turn digested by the animal.

Horses, swine, dogs, and other single-stomach animals are unable to utilize urea.

The Association of American Feed Control Officials has a regulation to the effect that urea be used in such limited quantities as to insure the total amount present shall not exceed 3 percent of the (grain) ration or 1/3 of the total protein. If a feed contains more than 3 percent of urea, the label shall bear a statement of proper usage and the following in type of such conspicuousness as to render it likely to be read and understood by ordinary individuals under customary conditions of purchase and use.

WARNING: This feed should be used only in accordance with directions furnished on the label.

METHOD OF CALCULATING THE ANALYSIS OF
A FEED MIXTURE

Requests are often received for a method of calculating the analysis of a given feed mixture. Examples are given of two classes of feed most commonly mixed by the feeder, in 1,000-pound batches, for his stock.

Example 1. 20-percent protein dairy feed.

1	2	3	4
Ingredients	Percentage of protein, or pounds in 100	Hundreds of pounds of each ingredient	Pounds of protein from each ingredient
150 pounds wheat bran	15	1.5	22.5
200 pounds ground shelled corn	9	2	18.0
150 pounds hominy meal	11	1.5	16.5
150 pounds cottonseed meal	41	1.5	61.5
150 pounds soybean meal	41	1.5	61.5
100 pounds ground oats	11	1	11.0
100 pounds alfalfa meal	14	1	14.0
1000 pounds		10	205.0

Then 205.0 divided by 10 = 20.5, the percentage of protein in this feed.

Example 2. 20-percent protein laying mash.

1	2	3	4
Ingredients	Percentage of protein, or pounds in 100	Hundreds of pounds of each ingredient	Pounds of protein from each ingredient
150 pounds wheat bran	15	1.5	22.5
200 pounds wheat middlings	16	2	32.0
200 pounds ground yellow corn	9	2	18.0
100 pounds ground oats	11	1	11.0
150 pounds meat scraps	50	1.5	75.0
100 pounds alfalfa meal	14	1	14.0
100 pounds soybean meal	41	1	41.0
1000 pounds		10	213.5

Then 213.5 divided by 10 = 21.35, the percentage of protein in this feed.

Explanation of Method used in Table 1.

1. List the number of pounds and ingredients in column 1.
2. Get from the guaranty on the official tag or from the average analysis the protein content of each ingredient and put it in column 2.
3. Place the hundreds of pounds of each ingredient in column 3. For example, 150 pounds of an ingredient is listed as 1.5 hundred pounds.
4. Multiply the figure for each ingredient in column 2 by that in column 3 to get the figure in column 4. This is multiplying the number of pounds of protein in a hundred, by the number of hundred pounds of each ingredient, to get the total pounds of protein furnished by each ingredient.
5. Add column 3, which gives the total weight of the mixture, in hundred pounds.
6. Add column 4, which gives the total weight of protein in the mixture.
7. Divide the sum of column 4 by the sum of column 3. This gives the percentage of protein in the mixture.

The percentages of other substances such as fat or fiber can be calculated in a similar way.

AVERAGE COMPOSITION OF THE MORE COMMON FEEDSTUFFS

Feedstuff	Protein	Fats	Carbohydrates		Water	Ash
			Fiber	N. F. Extract		
Alfalfa Leaf Meal	21.0	2.8	16.0	40.5	7.7	12.0
Alfalfa Meal	14.0	2.0	30.0	36.0	9.0	9.0
Barley	12.0	2.0	5.4	67.3	10.6	2.7
Barley Feed	13.5	3.5	8.7	60.9	9.3	4.9
Beet Pulp, Dried	9.2	0.5	19.8	47.2	9.9	3.4
Blood, Dried	84.5	1.1	1.0	0.7	8.2	4.5
Bone Meal, Raw	26.0	5.0	1.0	2.5	6.4	59.1
Bone Meal, Steamed	7.5	1.2	1.5	3.2	5.7	81.3
Brewers Dried Grains	25.0	6.4	16.0	41.0	7.7	3.9
Buckwheat	10.8	2.5	10.5	62.3	12.0	1.9
Buttermilk, Dried	33.0	6.0	0.3	43.1	7.6	10.0
Buttermilk, Semi-Solid	13.4	3.0	0.0	15.9	65.0	2.7
Citrus Meal	5.9	3.1	11.5	62.7	9.9	6.9
Coconut Oil Meal	20.5	8.0	10.0	45.0	9.5	6.5
Corn	8.0	3.9	2.0	69.9	15.0	1.2
Corn Bran	9.7	7.3	9.2	62.0	9.4	2.4
Corn and Cob Meal	7.0	3.5	8.0	66.1	14.1	1.5
Crushed Ear Corn & Shucks	7.0	3.0	10.6	69.2	11.0	1.8
Corn Chop	8.0	3.5	2.0	71.0	14.0	1.5
Corn Feed Meal	8.0	4.5	3.0	71.0	11.4	2.0
Corn Germ Meal	21.0	9.0	9.0	50.7	7.0	3.3
Corn Gluten Feed	25.5	2.7	7.6	48.8	9.1	6.3
Corn Gluten Meal	43.1	2.0	4.0	39.8	8.6	2.5
Cottonseed Meal	41.5	6.3	10.4	28.1	7.2	6.5
Cottonseed Meal Solvent	41.1	2.1	11.0	31.1	9.2	6.8
Cottonseed Feed	34.6	6.3	14.1	31.5	7.6	5.9
Distillers Dried Grains, Corn	26.1	8.8	12.8	44.2	7.1	2.5
Distillers Dried Grains, Rye	24.4	5.6	11.5	48.3	6.1	22.4
Distillers Dried Solubles	28.5	9.6	4.4	42.5	7.0	7.4
Fish Meal	60.9	6.8	0.9	5.0	7.1	17.6
Flaxseed	24.0	35.9	6.3	24.0	9.2	4.3
Flaxseed Screenings Oil Feed	25.0	7.1	11.7	40.3	8.1	7.8
Hominy Feed	11.2	6.9	5.2	64.2	9.6	2.9
Lespedeza Seed	36.6	7.6	9.6	32.8	8.3	5.1
Linseed Oil Meal	35.4	5.8	8.2	36.0	9.0	5.6
Linseed Oil Meal Solvent	36.6	1.0	9.3	38.3	9.6	5.6
Malt Sprouts	26.8	1.3	14.2	44.3	7.4	6.0
Meat Scraps 55%	55.8	9.3	2.1	1.3	6.1	25.4
Meat & Bone Scraps, 50%	51.0	10.1	2.1	1.6	6.1	29.1
Molasses, Cane	3.0	0.0	0.0	61.7	25.7	6.1
Molasses, Beet	7.8	0.0	0.0	62.1	22.0	7.0
Oats	12.0	4.6	11.0	58.6	10.4	3.4
Oat Kernels	16.0	6.4	1.6	66.0	8.0	2.0
Oat Middlings	15.9	5.2	3.3	64.6	8.6	2.4
Peanut Kernels	30.4	47.7	2.5	11.7	5.4	2.3
Peanut Oil Meal	43.5	7.6	13.3	23.4	7.0	5.2
Peanut Oil Meal, Solvent	51.5	1.4	5.7	27.2	8.4	5.8
Peanut Skins	15.9	22.4	10.6	42.2	6.2	2.7
Rice Bran	12.5	12.5	12.5	44.0	9.0	9.5
Rye	11.8	1.8	1.8	73.2	9.4	2.0
Rye Middlings	16.6	3.4	5.2	61.2	9.8	3.8
Skimmed Milk, Dried	34.0	1.0	0.0	51.0	6.0	8.0
Sorghum Grains	9.5	3.4	2.0	72.2	12.0	1.9
Soybean (Seed)	36.5	17.5	4.3	26.5	9.9	5.3
Soybean Oil Meal	44.3	5.3	5.7	29.6	9.1	6.0
Soybean Oil Meal, Solvent	46.1	1.0	5.9	31.8	9.4	5.8

Average Composition of the More Common Feedstuffs, Continued

Feedstuff	Protein	Fats	Carbohydrates		Water	Ash
			Fiber	N.F. Extract		
Tankage, 60%	60.6	8.5	2.0	1.8	6.9	20.2
Tankage with Bone 50%	51.3	11.5	2.3	2.3	6.2	26.1
Wheat	10.5	1.7	2.8	72.9	10.2	1.9
Wheat Bran	14.0	3.5	9.5	56.9	10.1	6.0
Wheat Mixed Feed	13.5	3.5	7.5	60.2	10.1	5.2
Wheat Brown Middlings or Shorts	15.0	3.5	7.0	58.7	10.3	5.4
Wheat Gray Middlings or Shorts	15.0	3.5	6.0	60.6	10.5	4.4
Wheat Flour, Red Dog	16.0	3.5	3.0	66.4	8.5	2.6
Wheat Flour, Patent	10.9	1.3	0.4	74.7	12.3	0.5
Wheat Germ Meal	27.8	9.2	3.3	44.4	8.9	4.5
Grain Screenings (From Wheat)	10.5	1.7	2.8	70.8	9.6	4.6
Whey, Dried	12.2	0.8	0.2	70.4	6.5	9.9
Yeast Brewers, Dried	44.9	0.7	2.7	38.8	6.2	6.9
Yeast, Irradiated, Dried	48.7	1.1	5.5	32.2	6.4	6.4

ROUGHAGES

Alfalfa Hay	14.5	2.3	29.7	36.3	8.6	8.6
Blue Grass Hay	8.2	2.5	29.8	42.5	10.5	6.5
Clover Hay, White	14.4	2.4	22.5	40.9	12.0	7.8
Clover Hay, Red	11.8	2.6	27.3	40.1	11.8	6.4
Corn Stover, without ear	5.9	1.6	30.8	46.5	9.4	5.8
Corn Stover, with ear	7.8	2.2	27.1	47.6	8.9	6.4
Cowpea Hay	18.6	2.6	22.5	35.1	9.9	11.3
Fescue Hay	7.0	1.9	30.3	43.2	11.8	6.8
Lespedeza Hay	13.5	2.5	28.0	40.1	10.5	5.4
Soybean Hay	15.5	2.8	26.5	38.7	9.2	7.3
Timothy Hay	6.2	2.5	29.8	45.0	11.6	4.9

FILLERS

Alfalfa Stem Meal	11.5	1.3	36.3	34.8	9.0	7.1
Corn Cob	2.3	0.4	32.1	54.0	9.6	1.6
Corn Husk or Shuck	3.4	0.9	28.2	49.6	15.0	2.9
Cottonseed Hulls	3.9	1.0	45.5	37.2	9.7	2.7
Flax Plant By-Products	6.4	2.1	44.4	33.1	8.1	5.9
Oat Mill By-Product	5.6	1.8	27.9	50.8	7.6	6.3
Oat Hull Feed	3.5	1.5	32.5	49.3	7.6	5.6
Oat Hulls	3.0	1.0	35.0	47.7	6.8	6.5
Screenings*						
Chaff and dust**						

* Varies in quality from fair.

** Varies in quality from poor to worthless and even dangerous.

Miscellaneous Samples Analyzed in 1947-60

Feedstuff	Protein	Fat	Fiber
Activated Sewer Sludge	29.2	6.0	6.7
Alfalfa Silage	4.0	0.9	9.5
Barley Bran	15.2	5.2	14.9
Bluegrass Chaff	7.1	1.9	28.5
Bluegrass Screenings	6.7	2.0	26.1
Blackberry Seeds	9.6	---	----
Bread	12.5	5.3	0.7
Brewers Wet Grains	10.3	1.0	3.4
Buckwheat Feed & Hulls	9.6	2.9	22.4
Cake, Ground	4.8	9.9	1.5
Cob & Shuck Meal	3.2	0.6	31.6
Cookie Meal	7.7	8.6	0.8
Corn Blowings	8.7	1.9	15.7
Corn Fodder & Soybean Plant	10.1	3.9	17.0
Cracklings, Edible	67.1	28.1	1.1
Cracklings, Inedible	44.1	22.2	3.0
Distillers Thin Slop	1.4	---	----
Fescue Silage	2.8	1.3	8.9
Honey Suckle	2.8	0.02	6.0
Ice Cream Cones, Ground	9.2	1.5	0.7
Johnson Grass	7.8	0.8	37.6
Kale Seed	24.3	40.0	9.6
Korean Hay	13.9	---	----
Korean Screenings	21.9	3.6	20.8
Lespedeza Screenings	19.8	15.7	26.2
Lima Beans, Ground	21.5	1.5	6.1
Malt Hulls, Ground	10.3	1.8	22.5
Osage Orange Apple	2.5	4.3	1.7
Peanut Vine Meal	10.1	2.3	34.0
Popcorn, Ground	9.4	2.5	2.7
Popcorn, Popped and Crushed	8.4	12.8	2.9
Potato Flour	2.0	---	----
Potato Flakes	9.0	---	----
Rag Weed Seed	17.2	16.2	34.4
Sorghum, Ground (Stalk & Leaves)	4.1	2.9	19.6
Ground Unthreshed Heads of Grain Sorghum	6.4	2.1	10.5
Fescue & Clover Silage	2.0	1.0	8.0
Oat Silage	1.9	1.5	9.8
Straw Silage	6.5	3.0	19.5
Sudan Grass Silage	5.9	1.1	14.0
Sudan & Soybean Silage	2.4	0.6	7.9
Vetch Seed	26.4	0.7	7.6
Walnut Shells & Meats	13.2	24.2	27.1
Walnut Meat Skins & Small Amount of Shell	21.5	45.5	12.0
Wheat Toast, Ground	12.6	4.9	0.5
Wild Onions	6.7	0.2	1.0
Wheat Silage	4.4	1.4	22.7

TABLE 1 REPORT OF OFFICIAL FEED SAMPLES ANALYZED, 1960

For samples not passed see Table 2

NAME AND ADDRESS OF MANUFACTURER	Number of Samples Analyzed and Examined	Number of Samples Passed	Number of Samples Not Passed
The Abilene Flour Mills Co., Abilene, Kansas	3	3	
Albany Mills, Albany, Kentucky	4	3	1
Albers Milling Company, Los Angeles, Calif.	9	8	1
All-In-One Feeds, Inc., Portland Michigan	1		1
Allen Products Co., Inc., Allentown, Pa.	1	1	
Allied Food Distributors, Inc., Atlanta, Ga.	4	2	2
Allied Mills, Inc., Chicago, Illinois	94	89	5
Amber Milling Co., St. Paul, Minnesota	1	1	
American Crystal Sugar Company, East Grand Fork, Minnesota	1	1	
Anderson & Spilman, Danville, Kentucky	4	4	
Anderson Co. Farm Service, Lawrenceburg, Ky.	1	1	
Andrew Mills, Russellville, Kentucky	1	1	
Anglo Sweet Feed Mills, Inc., Owensboro, Ky.	12	11	1
Archer-Daniels-Midland Co., Minneapolis, Minn.	8	8	
Archer Products Co., Inc., Fort Worth, Texas	1	1	
Armour & Company, Chicago, Illinois	5	4	1
Atkinson Milling Co., Minneapolis, Minnesota	1	1	
Aubrey Feed Mills, Louisville, Kentucky	179	153	26
The Auburn Mills, Inc., Auburn, Kentucky	18	14	4
Aylor & Mever Co., Aurora, Indiana	7	7	
B. G. & V. Rendering Co., Mayfield, Kentucky	2	1	1
Bagdad Roller Mills, Bagdad, Kentucky	52	44	8
Baltic Mills, Inc., Vincennes, Indiana	5	5	
Banner Feed Mills, Huntington, West Virginia	10	6	4
Bardstown Mills, Bardstown, Kentucky	8	8	
Bardwell Milling Co., Bardwell, Kentucky	3	3	
Barrett Company, Harrodsburg, Kentucky	1	1	
Barry-Carter Milling Co., Lebanon, Tenn.	1	1	
Barton Distilling Co., Bardstown, Kentucky	11	11	
Bates Farm Supply, Dry Ridge, Kentucky	3	2	1
Battle Creek Dog Food Co., Battle Creek, Mich.	2	1	1
Baughman Milling Co., Stanford, Kentucky	39	30	9
Bay State Milling Co., Winona, Minnesota	2	2	
James B. Beam Distilling Co., Clermont, Ky.	1	1	
The Beardstown Mills Co., Beardstown, Ill.	1	1	
B. A. Bernard & Co., Inc., Camden, New Jersey	6	6	
Bethany Industries, Inc., Mason, Ohio	1	1	
Bi-County Farm Bureau Coop., Florence, Ky.	15	14	1
Birmingham Milling Co., Benton, Kentucky	3	2	1
Bissett Farm Supply, Harrodsburg, Kentucky	1	1	
Blue Ribbon Milling Co., Jackson, Tennessee	1	1	
Bobb Bros., Leesburg, Ohio	3	2	1
The Boswell Company, Atlanta, Georgia	3	1	2
Boyle Packing Company, Danville, Kentucky	2	2	
Bremco Alfalfa Mills, Inc., New Bremen, Ohio	4	4	
Brennan Packing Co., Inc., Chicago, Illinois	2	2	
Brock Grain Co., Maysville, Kentucky	1	1	
The Brode Corp., Memphis, Tennessee	2	2	
Browder Milling Co., Fulton, Kentucky	16	11	5
Buckeye Cellulose Corp., Cincinnati, Ohio	5	5	
The Buckeye Cellulose Corp., Memphis, Tenn.	1	1	
Buhler Mills, Inc., Buhler, Kansas	2	2	
Buhner & Company, Louisville, Kentucky	22	19	3
Bundy Bros. Mill Co., Medora, Indiana	7	6	1

TABLE 1 REPORT OF OFFICIAL FEED SAMPLES ANALYZED, 1960

For samples not passed see Table 2

NAME AND ADDRESS OF MANUFACTURER	Number of Samples Analyzed and Examined	Number of Samples Passed	Number of Samples Not Passed
Burgess Bros. Feed Mill, Sadieville, Kentucky	1	1	
Bush Bros. & Company, Clinton, Tennessee	10	10	
A. C. Butts & Sons, Fulton, Kentucky	2	1	1
Cadiz Milling Company, Cadiz, Kentucky	18	7	11
Campbell's Feed Mill, Kevil, Kentucky	1	1	
Campbells Wholesale Co., Combs, Kentucky	1	1	
Caneyville Roller Mills, Caneyville, Kentucky	18	13	5
The A. B. Caple Co., Toledo, Ohio	1	1	
Cardinal Food Products, Inc., St. Louis, Mo.	3		3
Cargill, Inc., Minneapolis, Minnesota	2	2	
Carroll County Farm Bureau Cooperative, Carrollton, Kentucky	3	3	
Carson Food Company, Danville, Illinois	1	1	
Cat Life Packing Co., Chicago, Illinois	1	1	
Central Soya Company, Fort Wayne, Indiana	15	12	3
Check-R-Board Store, Ashland, Kentucky	2	1	1
Chestnut & Anderson Feed & Supply Company, Hopkinsville, Kentucky	4	1	3
Cincinnati Grain & Hay Co., Cincinnati, Ohio	1	1	
Citizens Milling Co., Somerset, Kentucky	18	10	8
City Roller Mills, Vevay, Indiana	2	2	
Clarkson Feed Store, Clarkson, Kentucky	2	2	
Clary Molasses Co., College Grove, Tennessee	1	1	
Clifty Falls Mills, Madison, Indiana	39	31	8
Clinton Corn Processing Co., Clinton, Iowa	3	1	2
Clinton Hatchery, Clinton, Kentucky	8	6	2
Clinton Milling Co., Clinton, Kentucky	34	26	8
Coast Fisheries, Chicago, Illinois	5	5	
Colby Milling Co., Colby Wisconsin	3	2	1
H. C. Cole Milling Co., Chester, Illinois	12	11	1
Clell Coleman & Sons, Burgin, Kentucky	35	24	11
Collier Bros. Feed Mill, Hickory, Kentucky	2	2	
The Colorado Milling & Elevator Company, Denver, Colorado	9	9	
Comet Rice Mills, Stuttgart, Arkansas	3	3	
Commander-Larabee Milling Company, Minneapolis, Minnesota	2	2	
Community Mills, Belton, Kentucky	2	2	
Community Milling Co., Irvington, Kentucky	16	8	8
The Consolidated Blenders, Inc., Nebraska City, Nebraska	1	1	
The Consolidated Flour Mills Co., Wichita, Kansas	1	1	
Corn Products Co., New York, New York	1	1	
Cooperative Mills, Inc., Cincinnati, Ohio	232	215	17
Crestwood Farmers Supply Center, Crestwood, Kentucky	6	5	1
Crescent Roller Mills, Taylorsville, Kentucky	11	10	1
The Crete Mills, Crete, Nebraska	1	1	
Custom Feed Mills, Morganfield, Kentucky	10	9	1
Cypress Land Farm Co., Carrollton, Illinois	1	1	
Dearborn Mills, Aurora, Indiana	39	37	2
Deaton Brothers, Jackson, Kentucky	2	2	
Decatur Cotton Oil Co., Decatur Alabama	2	1	1
Decatur Elevator Co., Decatur, Illinois	4	4	

TABLE 1 REPORT OF OFFICIAL FEED SAMPLES ANALYZED, 1960

For samples not passed see Table 2

NAME AND ADDRESS OF MANUFACTURER	Number of Samples Analyzed and Examined	Number of Samples Passed	Number of Samples Not Passed
Deep Run Packing Co., Inc., Dublin, Pa.	3		3
Des Moines Oat Products Co., Des Moines, Iowa	1	1	
W. C. Dicken, Mentor, Kentucky	13	13	
Dixie Mills Company, East St. Louis, Illinois	4	4	
Dixie-Portland Flour Co., Chattanooga, Tenn.	3	3	
Dixie-Portland Flour Mills, Inc., Arkansas City, Kansas	2	2	
Dixie Treat Sales Co., McKenzie, Tennessee	3	3	
Dixie Treat Sales Co., Jackson, Tennessee	3	2	1
Doggie Dinner, Bedford, Ohio	1		1
Doyle Packing Co., Chicago, Illinois	1	1	
Duncan's Farm Service, Lawrenceburg, Ky.	9	9	
Dyersburg Oil Mill Co., Dyersburg, Tenn.	15	15	
The Early & Daniel Co., Cincinnati, Ohio	109	87	22
Emge Packing Co., Fort Branch, Indiana	1	1	
The F. L. Emmert Co., Cincinnati, Ohio	2	2	
Empire Distributing Co., St. Louis, Missouri	1	1	
Empire Rice Mills, Inc., Fair Oaks, Arkansas	1	1	
John W. Eshelman & Son, Lancaster, Pa.	17	15	2
Eshelman Grain Inc., Columbus, Ohio	21	19	2
Ewing Mill Co., Brownstown, Indiana	6	4	2
Ewing Mill Co., Ewing, Indiana	3	2	1
Evans Milling Co., Inc., Indianapolis, Indiana	1	1	
Fabro of Georgia, Inc., Atlanta, Georgia	1	1	
Fabro, Inc., Athens, Georgia	15	11	4
Famous Feed Mills, Nashville, Tennessee	30	25	5
Farmers Elevators, Inc., Owensboro, Kentucky	15	9	6
Farmers Feed Mill, Lexington, Kentucky	1	1	
Farmers Feed Store, Central City, Kentucky	6	6	
Farmers & Merchants Milling Company, Brooksville, Kentucky	6	6	
Farmers Milling Co., Somerset, Kentucky	15	8	7
Farmers Supply & Produce Co., Monticello, Ky.	1		1
Farmers Supply Co., Roadfork, Kentucky	1	1	
Farmers Supply Co., Springfield, Kentucky	1	1	
Farmers Supply Co., Beaver Dam, Kentucky	2	1	1
Farmers Tankage Co., Henderson, Kentucky	1	1	
Farmers Union Mill, Versailles, Kentucky	2	2	
Farmington Sweet Feed Mill, Farmington, Ky.	2	2	
J. H. Fedders, Inc., Covington, Kentucky	15	14	1
Federal Grain Co., Inc., Bell City, Missouri	2	2	
Ferncliff Feed & Grain Co., Louisville, Ky.	39	38	1
Fischer Packing Co., Louisville, Kentucky	11	10	1
Field Packing Co., Owensboro, Kentucky	3	2	1
Flambeau Milling Co., Phillips, Wisconsin	6	2	4
Folsomdale Milling Co., Boaz, Kentucky	5	5	
Food Products Co. of America, Chicago, Illinois	1		1
Fortune Feed Mills, Lebanon, Tennessee	1	1	
Fortune Feed Mills, Huntington, West Virginia	1	1	
Francis Wholesale Co., Prestonsburg, Ky.	3	2	1
French Sardine Co., Terminal Island, California	5	4	1
Frosty Morn Meats, Clarksville, Tennessee	6	5	1
Henry Fruechtenicht Co., Inc., Louisville, Ky.	122	112	10
Fruen Milling Co., Minneapolis, Minnesota	1	1	

TABLE 1 REPORT OF OFFICIAL FEED SAMPLES ANALYZED, 1960

For samples not passed see Table 2

NAME AND ADDRESS OF MANUFACTURER	Number of Samples Analyzed and Examined	Number of Samples Passed	Number of Samples Not Passed
Fuhrer-Ford Milling Co., Mt. Vernon, Indiana	16	11	5
Funk Brothers Seed Co., Bloomington, Illinois	1	1	
Gallatin County Farm Supply, Warsaw, Kentucky	2	2	
Garden Street Mill & Elevator Co., Louisville, Ky.	11	11	
Garrard Mills, Lancaster, Kentucky	14	13	1
General Distributors, South Ft. Mitchell, Ky.	5	5	
General Foods Corp., Battle Creek, Michigan	5	5	
General Mills, Inc., Minneapolis, Minnesota	33	32	1
General Packing Co., Waynesville, Ohio	3	2	1
Germantown Milling Co., Germantown, Kentucky	4	3	1
Giant Wholesale Co., Johnson City, Tennessee	1	1	
Gilster Milling Co., Chester, Illinois	4	1	3
Glenmore Distilleries Co., Owensboro, Ky.	3	3	
Gold Seal Products Co., Inc., Birmingham, Ala.	1	1	
Goldenrod Oil Meal Sales Co., Memphis, Tenn.	3	2	1
Great Atlantic & Pacific Tea Co., New York, N. Y.	4	4	
Green County Milling Co., Greensburg, Kentucky	5	5	
Gwinn Bros. & Co., Huntington, West Virginia	27	22	5
Hales & Hunter Co., Chicago, Illinois	36	30	6
Hardin County Milling Co., Elizabethtown, Ky.	5	3	2
Hardin Feed Mill, Hardin, Kentucky	1	1	
Hardy Bros. Mill, Walton, Kentucky	5	5	
Harlan Farmers Supply Co., Harlan, Kentucky	2		2
Harpeth Mill, Nashville, Tennessee	6	1	5
Harrison's Farm Supply, Berea, Kentucky	2	2	
The P. H. Harsha Milling Co., Portsmouth, Ohio	7	5	2
Harvest Brand, Inc., Pittsburg, Kansas	2	1	1
G. M. Haycraft & Son, Leitchfield, Kentucky	2	1	1
Haydon Mill & Grain Co., Springfield, Kentucky	20	19	1
Heaven Hill Distilleries, Inc., Bardstown, Ky.	9	7	2
Burch Hester Feed Store, Hustonville, Ky.	8	7	1
Dr. Heinz Co., Inc., Washington C. H., Ohio	19	15	4
Hermitage Feed Mill, Nashville, Tennessee	1	1	
Hi-Life Packing Co., Chicago, Illinois	1	1	
Hickman County Feed Mill, Clinton, Kentucky	4	1	3
Highland Products, Inc., Minneapolis, Minn.	1	1	
Hill Packing Co., Topeka, Kansas	3	3	
Hodgenville Roller Mill, Hodgenville, Kentucky	2	2	
Holmes & Randolph Feed Mill, Mayfield, Ky.	1		1
Home Milling Co., Greenville, Kentucky	37	20	17
Honegger & Co., Fairbury, Illinois	2	2	
Hopkinsville Milling Co., Hopkinsville, Kentucky	16	10	6
Hudson's Farm Service, Franklin, Kentucky	3	3	
Hulmar & Company, Evansville, Kentucky	1	1	
Humphrey's-Godwin Co., Memphis, Tennessee	2	2	
Hygrade Food Products Corp., Indianapolis, Ind.	4	4	
Igleheart Brothers, Evansville, Indiana	15	13	2
Illinois Cereal Mills, Inc., Paris, Illinois	5	5	
Illinois Soy Products Co., Springfield, Kentucky	4	4	
J. F. Imbs Milling Co., Belleville, Illinois	7	5	2
Independent Oil Mill Co., Jackson, Tennessee	7	6	1
International Milling Co., Minneapolis, Minn.	4	4	
International Salt Co., Avery Island, Louisiana	1	1	
Interstate Foods of America, Bedford, Ohio	3	2	1

TABLE 1 REPORT OF OFFICIAL FEED SAMPLES ANALYZED, 1960

For samples not passed see Table 2

NAME AND ADDRESS OF MANUFACTURER	Number of Samples Analyzed and Examined	Number of Samples Passed	Number of Samples Not Passed
Jet Products, Inc., Columbus, Mississippi	1		1
Jones Packing Company, Paducah, Kentucky	3	3	
The Kansas Milling Co., Wichita, Kansas	2	2	
Keller Hay & Grain Co., Newport, Kentucky	9	6	3
Kellogg Company, Battle Creek, Michigan	1	1	
Spencer Kellogg & Sons, Inc., Kansas City, Mo.	26	20	6
Kentucky By-Products Corp., Louisville, Ky.	14	6	8
Kentucky Chemical Industries, Inc., Cincinnati, Ohio	5	2	3
Keynes Brothers, Logan, Ohio	18	10	8
F. W. Kibler Milling Co., Mt. Orab, Ohio	2	2	
Kingan Division - Hygrade Food Products Corp., Detroit, Michigan	4	4	
The Klarer Company, Louisville, Kentucky	10	9	1
Knifley Feed & Supply Company, Elkhorn, Ky.	3	1	2
Krey Packing Co., St. Louis, Missouri	5	5	
LaCrosse Milling Co., Cochrane, Wisconsin	4	4	
Ladish Malting Co., Milwaukee, Wisconsin	1	1	
Lake County Oil Mill, Tiptonville, Tennessee	13	11	2
Lauhoff Soya Company, Danville, Illinois	10	10	
Lauhoff Grain Company, Danville, Illinois	1		1
Lee Dog Food Company, Lagrange, Kentucky	3	3	
Lewisburg Roller Mills, Lewisburg, Kentucky	5	3	2
Lexington Roller Mills, Lexington, Kentucky	30	29	1
Life Guard Feeds, Columbus, Ohio	9	8	1
Lilly Brothers Seed Co., Hopkinsville, Ky.	1	1	
Lipscomb Farm Supply, Walton, Kentucky	3	3	
Lofton's Feed & Grain, Clay, Kentucky	2	2	
London Feed & Milling Co., London, Kentucky	1	1	
Louisa Supply Company, Louisa, Kentucky	7	7	
Lovelaceville Feed Mill, Lovelaceville, Ky.	5	5	
L. B. Lovitt & Co., Memphis, Tennessee	7	6	1
Lowe's Feed & Hatchery, Bowling Green, Ky.	8	2	6
Loy's Mill, Brooksville, Ohio	1	1	
Lyon & Greenleaf Co., Inc., Ligonier, Indiana	1	1	
Magic Feed Mills, Paoli, Indiana	3	3	
Major-Burres Seed Co., Wilkerson, Indiana	1		1
Marhoefer Packing Co., Inc., Muncie, Indiana	1		1
Marianna Sales Co., Memphis, Tennessee	4	4	
Markin Feed Company, Ironton, Ohio	1		1
Marnat Packing Co., Bennettsville, S. C.	1		1
Martin Sales Co., Toledo, Ohio	1	1	
Mayfield Milling Co., Mayfield, Kentucky	46	43	3
Mayfield Sweet Feed Mill, Mayfield, Kentucky	22	22	
Mayflower Mills, Fort Wayne, Indiana	2	2	
McCauley Bros. Seed Co., Versailles, Kentucky	6	1	5
J. E. McGahan Co., Paintsville, Kentucky	5	3	2
McKnight-Keaton Grocery Co., Sikeston, Mo.	4	2	2
McMillen Feed Mills, Ft. Wayne, Indiana	85	73	12
McRedmond Bros., Inc., Nashville, Tennessee	4	4	
McWhorter Bros., Albany, Kentucky	1	1	
Meadows Feed & Building Supply, Clay City, Ky.	4	3	1
The Mennel Milling Co., Fostoria, Ohio	3	3	

TABLE 1 REPORT OF OFFICIAL FEED SAMPLES ANALYZED, 1960

For samples not passed see Table 2

NAME AND ADDRESS OF MANUFACTURER	Number of Samples Analyzed and Examined	Number of Samples Passed	Number of Samples Not Passed
Metzger Bros., Paducah, Kentucky	3	2	1
Mid-American Milling Co., Omaha, Nebraska	1	1	
Middlesboro Milling Co., Middlesboro, Ky.	10	8	2
Midget Mill, Somerset, Kentucky	6	2	4
The Midland Grocery Co., Portsmouth, Ohio	1	1	
S. E. Mighton Co., Bedford, Ohio	3	2	1
Carlyle Miller, Bowling Green, Kentucky	1		1
Miller Milling Service, Bowling Green, Ky.	3	2	1
Milliken Sweet Feed Mill, Franklin, Kentucky	5	2	3
Mineral Products Co., Indianapolis, Indiana	1		1
Minnesota Linseed Oil Co., Minneapolis, Minn.	1	1	
Mohawk Roller Mills, Mohawk, Tennessee	3	2	1
Monroe Bros. Sweet Feed Mill, Cave City, Ky.	2	2	
Moorman Manufacturing Co., Quincy, Illinois	2	2	
Morgan Packing Co., Inc., Austin, Indiana	1	1	
Morgantown Feed Mill, Morgantown, Kentucky	5	5	
John Morrell & Co., Chicago, Illinois	1	1	
Morton Salt Co., Chicago, Illinois	1	1	
Mt. Vernon Milling Co., Mt. Vernon, Indiana	6	6	
Munfordville Milling Co., Munfordville, Ky.	2	2	
Murphy Grain & Milling Co., Owensboro, Ky.	6	5	1
Myers & Clark Milling Co., Ashland, Kentucky	19	18	1
Nashville Cotton Oil Mill Corp., Nashville, Tenn.	9	8	1
National Alfalfa Dehydrating & Milling Company, Lamar Colorado	5	5	
National Biscuit Company, Toledo, Ohio	5	5	
National Molasses Co., Oreland, Pennsylvania	1	1	
National Molasses Co., Cincinnati, Ohio	1	1	
National Oats Company, East St. Louis, Illinois	23	23	
National Oats Company, Cedar Rapids, Iowa	2	2	
Neuhoff Packing Co., Nashville, Tennessee	4	1	3
Neumond, Inc., St. Louis, Missouri	2	1	1
The New Era Milling Co., Arkansas City, Kansas	5	5	
Chas. Nunn & Sons Milling Co., Evansville, Ind.	22	20	2
Nutrena Mills Inc., Minneapolis, Minnesota	7	7	
Ohio Valley Soybean Coop., Henderson, Ky.	34	31	3
Orleans Canning Co., Chicago, Illinois	4	4	
Orleans Dog Candy Co., Chicago, Illinois	1		1
Owensboro Grain Co., Inc., Owensboro, Ky.	17	13	4
Owensboro Milling Co., Owensboro, Kentucky	31	27	4
Pan American Mills, Bowling Green, Kentucky	10	7	3
Patterson & Guthrie, Harrodsburg, Kentucky	3	3	
Pedrick Laboratories, Sand Springs, Oklahoma	3	3	
Pembroke Roller Mills, Pembroke, Kentucky	5	5	
Stanley Penn & Sons, Lexington, Kentucky	1	1	
Pennington Milling Co., Pennington Gap, Va.	3	3	
Perk Dog Food Company, Chicago, Illinois	3	2	1
Pet Food Packers, Washington C. H., Ohio	5	5	
Pierce & Williams, Hopkinsville, Kentucky	7	5	2
The Pillsbury Company, Minneapolis, Minnesota	104	88	16
Pittsburg Plate Glass Co., Redwing, Minnesota	2	2	
Pratt Laboratories, Inc., Junction City, Ky.	1	1	
Princeton Mills, Princeton, Kentucky	8	5	3

TABLE 1 REPORT OF OFFICIAL FEED SAMPLES ANALYZED, 1960

For samples not passed see Table 2

NAME AND ADDRESS OF MANUFACTURER	Number of Samples Analyzed and Examined	Number of Samples Passed	Number of Samples Not Passed
Provico Food Co., Botkins, Ohio	1	1	
Provico Feed & Concentrates, Cincinnati, Ohio	1	1	
The Purcell Seed Co., Evansville, Kentucky	2	2	
The Quaker Oats Co., Chicago, Illinois	30	26	4
C. B. Ragland Company, Nashville, Tennessee	3	3	
Ralston Purina Company, St. Louis, Missouri	221	210	11
Randolph Milling Company, Bandana, Kentucky	3	3	
Red Comb Pioneer Mills, Lexington, Kentucky	2	2	
Red Heart Division, Jorn Morrell Company, Chicago, Illinois	2	2	
Reelfoot Alfalfa Mill, Tiptonville, Tennessee	11	5	6
Loyd Reiterman, Kingston, Ohio	1	1	
Rhodes Sweet Feed Mill, Mayfield, Kentucky	2	1	1
Ringgold Milling Co., Clarksville, Tennessee	1	1	
Riteway Milling Co., Otway, Ohio	2		2
Rival Packing Company, Chicago, Illinois	2	2	
River Brand Rice Mills, Inc., Memphis, Tenn.	2	1	1
Riverside Molasses Co., Cincinnati, Ohio	2	2	
Robbins Bros., Auburn, Kentucky	4	1	3
Robinson Grain Co., Union City, Tennessee	1	1	
Robinson Milling Co., Inc., Somerset, Kentucky	21	12	9
Rodney Milling Company, Kansas City, Missouri	6	6	
Rogers Feed Store, Corinth, Kentucky	3	3	
Rome Oil Mill, Rome Georgia	1	1	
G. P. Rose & Co., Nashville, Tennessee	4	4	
Ross Feed Co., Murray, Kentucky	10	9	1
Russell-Miller Milling Co., Minneapolis, Minn.	3	2	1
Russell Springs Milling Co., Russell Springs, Ky.	2	2	
Russells Company, Hilliards, Ohio	2	2	
Russellville Feed Co., Russellville, Kentucky	6	2	4
Salyersville Wholesale Co., Salyersville, Ky.	3	1	2
Sandusky Bros., Harrodsburg, Kentucky	6	4	2
J. F. Schneider & Son, Middlesboro, Kentucky	3	2	1
Chas. H. Schenk & Sons, Vincennes, Indiana	3	2	1
Schenley Distillers, Frankfort, Kentucky	2	2	
John Schlemmer, Harrison, Ohio	4	1	3
The Scott County Milling Co., Sikeston, Mo.	21	16	5
Scottsville Feed Mill, Scottsville, Kentucky	1	1	
Joseph E. Seagram & Sons, Inc., New York, N. Y.	3	3	
Security Mills, Inc., Knoxville, Tennessee	1		1
Shurfine Foods, Inc., Chicago, Illinois	1	1	
J. Allen Smith & Co., Knoxville, Tennessee	7	6	1
Smithfield Milling Co., Smithfield, Kentucky	1	1	
Southern Canning Sales, Inc., Highland, Texas	2	2	
Southern Cotton Oil, Memphis, Tennessee	4	3	1
Southern Rendering Co., Shelbyville, Tenn.	7	5	2
Southern States Cooperative, Richmond, Virginia	5	5	
S. S. Campbellsville Coop., Campbellsville, Ky.	1	1	
S. S. Frankfort Coop., Frankfort, Kentucky	1	1	
S. S. Hopkinsville Coop., Hopkinsville, Ky.	7	6	1
S. S. LaGrange Coop., LaGrange, Kentucky	2	2	
S. S. Leitchfield Coop., Leitchfield, Kentucky	2	2	
S. S. Louisville Coop., Louisville, Kentucky	1	1	

TABLE 1 REPORT OF OFFICIAL FEED SAMPLES ANALYZED, 1960

For samples not passed see Table 2

NAME AND ADDRESS OF MANUFACTURER	Number of Samples Analyzed and Examined	Number of Samples Passed	Number of Samples Not Passed
S. S. Owenton Coop., Owenton, Kentucky	1	1	
S. S. Shelbyville Coop., Shelbyville, Kentucky	2	2	
Spears-Kiser Co., Paris, Kentucky	1	1	
Woodford Spears & Sons, Paris, Kentucky	5	5	
Spen-Well Feed Co., Winchester, Kentucky	18	14	4
Spreckles Molasses Co., San Francisco, Calif.	1	1	
A. E. Staley Manufacturing Co., Decatur, Ill.	9	9	
Staley Milling Co., Kansas City, Missouri	7	5	2
Standard Mills, Huntington, W. Virginia	3	1	2
Sturgis Milling Co., Sturgis, Kentucky	23	18	5
Sun-Ray Feed Mills, Bowling Green, Kentucky	7	6	1
Sun-Ray Feed Mills, Lexington, Kentucky	3	3	
Sunshine Biscuits, Inc., Grafton, Ohio	2	2	
Sunshine Molasses Co., Somerset, Kentucky	1	1	
Supreme Mills, Glasgow, Kentucky	38	27	11
D. B. Sutherland & Sons, Bloomfield, Kentucky	23	21	2
Sweet Feeds, Hopkinsville, Kentucky	4	4	
Sweet Feed Mills, Bowling Green, Kentucky	2	1	1
Swift & Co., Chicago, Illinois	24	23	1
Swift & Co., Memphis, Tennessee	1	1	
T & H Feed Service, Lebanon, Kentucky	3	3	
Tabby, Boston, Massachusetts	1	1	
Tabor Hatchery & Building Supply, Columbia, Ky.	8	7	1
Taylor County Implement & Feed Company, Campbellsville, Kentucky	3	3	
Tennessee Packers, Inc., Clarksville, Tenn.	1	1	
Thomerson Milling Co., Glasgow, Kentucky	1	1	
The Thorobred Co., Inc., Cincinnati, Ohio	1		1
The Thorobred Co., Inc., Waynesville, Ohio	4	4	
Louis Tobian & Company, Dallas, Texas	1	1	
Todd County Grain Co., Elkton, Kentucky	4	3	1
Topeka Flour Mills Corp., Salina, Kansas	3	3	
Trenton Cotton Oil Company, Trenton, Tenn.	23	20	3
Trenton Milling Co., Trenton, Illinois	4	4	
Tri-State Mills, Kenova, West Virginia	6	4	2
Unique Feed Mills, Hebron, Kentucky	2	2	
Usen Canning Company, Boston, Massachusetts	2	2	
Vet's Div. of Perk Foods Co., Chicago, Illinois	3	2	1
Vylactos Laboratories, Inc., Des Moines, Iowa	2	2	
The Weber Flour Mills Co., Salina, Kansas	1	1	
Weisenberger Mills, Midway, Kentucky	8	6	2
Ralph Wells & Co., Monmouth, Illinois	1	1	
Wenning Packing Co., New Salisburg, Indiana	1	1	
Western Grain Co., Birmingham, Alabama	1	1	
West Tennessee Soya Mills, Inc., Tiptonville, Tennessee	7	7	
Gardner White, Princeton, Kentucky	1	1	
Martha White Mills of West Virginia, Huntington, West Virginia	20	17	3
The Whitewater Flour Mills Company, Whitewater, Kansas	3	2	1
The George Wiedemann Brewing Company, Newport, Kentucky	1	1	

TABLE 1 REPORT OF OFFICIAL FEED SAMPLES ANALYZED, 1960

For samples not passed see Table 2

NAME AND ADDRESS OF MANUFACTURER	Number of Samples Analyzed and Examined	Number of Samples Passed	Number of Samples Not Passed
Williamstown Roller Mills, Williamstown, Ky.	7	5	2
Wilson & Company, Inc., Chicago, Illinois	1	1	
Wilson Soya Company, Wilson, Arkansas	1	1	
Winchester Canning Co., Canal Winchester, Ohio	1	1	1
Wingo Feed & Supply Company, Wingo, Kentucky	3	3	
Winn Milling Co., Greensbrug, Kentucky	7	5	2
Winn & Tobin Milling Company, Leitchfield, Ky.	4	2	2
Winn & Tobin Milling Company, Marion, Ky.	4	4	
Woodford Feed Company, Versailles, Kentucky	4	4	
Woolcott Mills, Inc., Lexington, Kentucky	3	3	
TOTALS	3,699	3,112	587
		84%	16%

TABLE 2 SAMPLES CLASSIFIED AS "NOT PASSED"

MANUFACTURER, ADDRESS AND BRAND	GUARANTEED	FOUND
Albany Mills, Albany, Kentucky Clinton 20% Dairy Feed	Crude Fat 3.5%	2.6%
Albers Milling Company, Los Angeles, California Friskies Dog Food	Crude Fat 2.5%	1.9%
All-In-One Feeds, Inc., Portland, Michigan All-In-One Feeding Compound	Calcium 5.0%	3.9%
Allied Food Distributors, Inc., Atlanta, Georgia Streak Dog Food	Ash 3.5%	5.0%
Jo-Bo Dog & Cat Food	Crude Fat 2.0%	1.4%
Allied Mills, Inc., Chicago, Illinois Wayne Poultry Mixer Medicated M-29 Arab Horse Feed	Arsanilic Acid 0.02%	0.01% Unground weed seeds
Wayne Roughage Supplement	N.P.N. (Urea) 12.0%	14.7%
Wayne Roughage Supplement	N.P.N. (Urea) 12.0%	14.4%
Wayne Roughage Supplement	N.P.N. (Urea) 12.0%	14.5%
Anglo Sweet Feed Mills, Inc., Owensboro, Kentucky Ace Perfection 16% Dairy Feed	Crude Protein 16.0%	15.0%
Armour & Co., Chicago, Illinois Armour 50% Meat & Bone Scraps	Crude Fiber 3.0%	3.8%
Aubrey Feed Mills, Louisville, Kentucky Red A Cage Layer Ration	Crude Protein 16.0%	15.4%
Red A Super High Energy Broiler Ration	Crude Protein 22.5%	21.2%
Red A Super High Energy Broiler Ration	Crude Protein 22.5%	21.8%
Red A Commercial Layer	Crude Fiber 5.0%	5.7%
Red A Commercial Layer	Crude Protein 16.0%	15.0%
Red A 42% H.E. Broiler Concentrate Medicated	Crude Protein 42.0%	40.7%
Aubrey's Special 16 1/2% Dairy Feed	3-Nitro-4 0.0125%	0.0039%
Aubrey's Special 16 1/2% Dairy Feed	Crude Protein 16.5%	15.5%
Aubrey's Special 16 1/2% Dairy Feed	Crude Protein 16.5%	14.7%
Aubrey's Special 16 1/2% Dairy Feed	Crude Protein 16.5%	15.4%
Aubrey's Special 16 1/2% Dairy Feed	Crude Protein 16.5%	15.9%
Aubrey's Special 16 1/2% Dairy Feed	Crude Protein 16.5%	15.6%
Aubrey's Special 16 1/2% Dairy Feed	Crude Protein 16.5%	15.9%
Aubrey's Special 16 1/2% Dairy Feed	Crude Protein 16.5%	15.3%
Aubrey's Special 16 1/2% Dairy Feed	Crude Protein 16.5%	15.7%
Red A 24% Dairy Feed	Crude Protein 24.0%	23.1%
Red A 24% Dairy Feed	Crude Protein 24.0%	22.8%
Red A 24% Dairy Feed	Crude Protein 24.0%	22.8%
Red A Calf Starter-Grower	Crude Protein 18.5%	16.8%
Red A Calf Starter-Grower	Crude Protein 18.5%	15.5%
Red A Calf Starter-Grower	Crude Protein 18.5%	16.4%
Red A 35% Sow & Pig Supplement Medicated	3-Nitro-4 0.19%	0.0078%
Aubrey's Special 40% Hog Supplement Medicated	3-Nitro-4 0.0125%	0.0061%
Aubrey's Special 40% Hog Supplement Medicated	3-Nitro-4 0.0125%	0.0058%
Aubrey's Special 40% Hog Supplement Medicated	Crude Protein 40.0%	38.9%
Aubrey's Special 40% Hog Supplement Medicated	Crude Protein 40.0%	36.6%
Red A 50% Protein Meat Scraps	Crude Fiber 5.5%	6.2%
The Auburn Mills, Inc., Auburn, Kentucky Leader Mixed Feed	Crude Protein 50.0%	49.2%
Leader Mixed Feed	Crude Protein 14.0%	12.5%
Leader Mixed Feed	Crude Fat 3.5%	2.7%
Leader Mixed Feed	Crude Protein 14.0%	13.2%
Leader Mixed Feed	Crude Fat 3.5%	2.5%
Leader Mixed Feed	Crude Fat 3.5%	2.9%
Leader Mixed Feed		Contained mixed Screenings Unground weed seeds

TABLE 2 SAMPLES CLASSIFIED AS "NOT PASSED"

MANUFACTURER, ADDRESS AND BRAND	GUARANTEED	FOUND
B. G. & V. Rendering Co., Mayfield, Kentucky Meat Scraps & Poultry By-Product	Crude Protein 50.0%	45.7%
Bagdad Roller Mills, Bagdad, Kentucky Rocket Age Lay Ration	Crude Protein 16.0%	15.2%
Rocket Age Lay Ration Medicated	Crude Protein 16.0%	15.1%
Rocket Age 32% Dairy Concentrate	Crude Fat 3.0%	2.0%
Rocket Age 40% Hog Concentrate	Crude Protein 40.0%	35.7%
	Crude Fiber 6.0%	7.2%
Rocket Age Pig Starter Medicated	Arsanilic Acid 0.01%	0.0%
Harrison's 20% Sow & Pig Feed	Crude Fiber 6.0%	7.2%
Rocket Age Pig & Sow Feed	Crude Fiber 7.0%	7.9%
Rocket Age 16% Shoa Grower Medicated	Arsanilic Acid 0.01%	0.0056%
Banner Feed Mills, Huntington, West Virginia Banner 24% Dairy	Crude Protein 24.0%	23.4%
16% Yellow Tag Sweet Mixing Feed	Crude Protein 16.0%	14.0%
	Crude Fiber 15.0%	15.6%
16% Yellow Tag Sweet Mixing Feed	Crude Protein 16.0%	14.4%
16% Yellow Tag Sweet Mixing Feed	Crude Protein 16.0%	15.4%
Bates Farm Supply, Dry Ridge, Kentucky Bates Special 16% Dairy Feed	Crude Protein 16.0%	14.9%
Battle Creek Dog Food Co., Battle Creek, Michigan Miller's Kibbles Dog Food	Crude Fat 4.0%	3.0%
Baughman Milling Co., Stanford, Kentucky Big B 24% Dairy Feed	Crude Protein 24.0%	22.5%
Big B 24% Dairy Feed		Unground weed seeds
Banner Hen Feed		Unground weed seeds
Banner Hen Feed		Unground weed seeds
Banner Hen Feed		Unground weed seeds
Banner Hen Feed		Unground weed seeds
Banner Hen Feed		Unground weed seeds
Banner Hen Feed		Unground weed seeds
Banner Mixed Feed		Corn cobs
Banner Mixed Feed		Unground weed seeds
Bi-County Farm Bureau Coop., Florence, Kentucky Co-op Pailfiller 20% Dairy Feed	Crude Protein 20.0%	18.4%
Birmingham Milling Company, Benton, Kentucky Ground Corn	Crude Fat 4.0%	3.4%
Bobb Bros., Leesburg, Ohio Screened Chick'n Scratch		Unground weed seeds
The Boswell Company, Atlanta, Georgia Pure Gold 41% Cottonseed Meal	Crude Protein 41.0%	39.4%
Pure Gold 41% Cottonseed Meal	Crude Protein 41.0%	39.3%
Browder Milling Company, Fulton, Kentucky Big 16% Dairy Feed	Crude Fat 3.0%	2.2%
Big 16% Dairy Feed	Crude Fat 3.0%	2.4%
Browder's Calf Grower		Unground weed seeds
Browder's 35% Pig & Hog Supplement Medicated	Crude Protein 35.0%	33.9%
	Arsanilic Acid 0.03%	0.02%
	Crude Protein 14.0%	12.1%
Browder's Special Hog Ration Medicated		
Buhner & Company, Louisville, Kentucky Happy Farmer Chick Starter & Grower Med.	Nicarbazin 0.0125%	0.0005%
Happy Farmer 40% Breeder Layer	Crude Protein 40.0%	39.0%

TABLE 2 SAMPLES CLASSIFIED AS "NOT PASSED"

MANUFACTURER, ADDRESS AND BRAND	GUARANTEED	FOUND
Buhner & Co., Louisville, Kentucky (Cont'd.) Happy Farmer 35% Sow Supplement	Crude Fat 2.5%	1.9%
Bundy Bros. Mill Company, Medora, Indiana Hominy Feed	Crude Protein 10.0%	9.2%
A. C. Butts & Sons, Fulton, Kentucky Butts Special 16% Dairy Feed	Crude Protein 16.0%	15.1%
Cadiz Milling Company, Cadiz, Kentucky Sugar Sweet Dairy Feed 16.0%	Crude Protein 16.0%	15.2%
Sugar Sweet Dairy Feed 16.0%	Crude Fat 3.0%	2.3%
Sugar Sweet Dairy Feed 16.0%		Unground weed seeds
Sunbeam Cattle Supplement A	Crude Fiber 8.0%	8.8%
Sunbeam Cattle Supplement A	Crude Fat 3.0%	1.6%
Sunbeam Cattle Supplement A	Crude Fat 3.0%	1.6%
Sunbeam Jr. 40% Hog Supplement	Calcium 4.5%	2.3%
Sunbeam Jr. 40% Hog Supplement	Calcium 4.5%	2.5%
Sunbeam Jr. 40% Hog Supplement	Calcium 4.5%	2.9%
Sunbeam 40% Hog Supplement	Crude Fat 3.0%	2.2%
Sunbeam 40% Hog Supplement	Crude Fat 3.0%	1.9%
Caneyville Roller Mills, Caneyville, Kentucky Kentucky Farm 20% Layer & Breeder	Crude Protein 20.0%	19.1%
Kentucky Farm 40% Dairy Supplement	Crude Protein 40.0%	38.9%
	Calcium 5.0%	2.9%
Kentucky Farm 40% Dairy Supplement	Calcium 5.0%	2.9%
Kentucky Farm 40% Dairy Supplement	Crude Protein 40.0%	37.9%
	Calcium 5.0%	3.4%
Kentucky Farm 12.5% Hog Feed Medicated	Arsanilic Acid 0.005%	0.002%
Cardinal Foods Products, Inc., St. Louis, Mo. Pointer Dog Food	Crude Fat 2.0%	0.8%
Pointer Dog Food	Crude Fat 2.0%	1.1%
Pointer Dog Food	Crude Fat 2.0%	1.0%
Central Soya Company, Fort Wayne, Indiana Master Mix 50% Dairy Concentrate	Crude Protein 50.0%	48.6%
Central Flaked Soybean Hulls	Crude Fat 2.0%	1.4%
Central Flaked Soybean Hulls	Crude Fat 2.0%	1.3%
Check-R-Board Store, Ashland, Kentucky Check-R-Mix 16% Dairy CM	Crude Protein 16.0%	14.7%
Chestnut & Anderson Feed Supply, Hopkinsville, Ky. Little River 40% Dairy Supplement	Calcium 4.0%	2.3%
Little River 40% Dairy Supplement	Calcium 4.0%	2.5%
Little River 40% Dairy Supplement	Calcium 4.0%	2.4%
Citizens Milling Co., Somerset, Kentucky Cumberland 24% Dairy Feed	N. P. N. (Urea) 8.3%	12.8%
Cumberland 24% Dairy Feed	Crude Protein 24.0%	17.4%
	Crude Fat 3.0%	2.3%
Cumberland 24% Dairy Feed	Crude Protein 24.0%	23.0%
Cumberland 24% Dairy Feed	Crude Protein 24.0%	22.3%
Cumberland 24% Dairy Feed	Crude Protein 24.0%	22.9%
Cumberland 16% Dairy Feed	Crude Fat 3.0%	2.4%
Cumberland 16% Dairy Feed	Crude Fat 3.0%	2.3%
16% Cumberland Mixed Feed	Crude Protein 16.0%	15.2%
Clifty Falls Mills, Madison, Indiana Clifty Falls 44% Pusher Dairy Concentrate	N. P. N. (Urea) 7.86%	17.4%
Clifty Falls 44% Pusher Dairy Concentrate	N. P. N. (Urea) 7.86%	22.8%
Clifty Falls 44% Pusher Dairy Concentrate	N. P. N. (Urea) 7.86%	12.1%
	Calcium 3.5%	1.6%
	Phosphorus 2.5%	0.7%
Clifty Falls 16% Cow Feed	Crude Fat 2.5%	1.9%
Clifty Falls 16% Cow Feed	Crude Fat 2.5%	1.8%

TABLE 2 SAMPLES CLASSIFIED AS "NOT PASSED"

MANUFACTURER, ADDRESS AND BRAND	GUARANTEED	FOUND
Clifty Falls Mills, Madison, Indiana (Cont'd.)		
Clifty Falls 10% Horse Feed	Crude Protein 10.0%	9.3%
Hominy Feed	Crude Protein 10.0%	8.3%
	Crude Fat 5.0%	2.0%
	Crude Protein 10.0%	9.3%
Hominy Feed	Crude Fat 5.0%	3.1%
Clinton Corn Processing Company, Clinton, Iowa		
Dex-Mo-Lass	Sugar 45.0%	41.4%
Dex-Mo-Lass	Sugar 45.0%	40.7%
Clinton Hatchery, Clinton, Kentucky		
New Deal 17% Cow Feed	Crude Fat 3.5%	2.6%
New Deal 44% Hog Supplement	Crude Protein 44.0%	41.8%
Clinton Milling Co., Clinton, Kentucky		
Masco 21% Starter & Grower Medicated	3-Nitro-4 0.005%	Trace
Masco 20% Layer Medicated	3-Nitro-4 0.0075%	0.0046%
Climco 22% Layer Medicated	Arsanilic Acid 0.01%	0.0023%
Masco 42% Protein & Mineral Dairy Mixing Conc.	N.P.N. (Urea) 14.0%	16.9%
Climco Pig Pre-Starter Medicated	Crude Fat 4.0%	2.9%
Climco Pig Pre-Starter Medicated	Crude Fat 4.0%	3.4%
Climco Pig Pre-Starter Medicated	Crude Fat 4.0%	3.0%
Masco Dog Food	Crude Protein 25.0%	24.2%
Colby Milling Company, Colby, Wisconsin		
Marathon Pulverized White Oats	Crude Protein 10.5%	9.0%
	Crude Fiber 15.0%	16.4%
H. C. Cole Milling Co., Chester, Illinois		
Omega Winter Wheat Bran	Crude Fiber 10.5%	11.6%
Clell Coleman & Sons, Burgin, Kentucky		
Favorite Feed	Crude Fat 3.5%	2.7%
Coleman's Farm Feed	Crude Fat 4.0%	3.2%
Coleman's Farm Feed	Crude Fat 4.0%	3.3%
Coleman's Farm Feed	Crude Fat 4.0%	3.3%
Coleman's Farm Feed	Crude Protein 16.5%	15.6%
Big Blue Stock Feed	Crude Fat 4.0%	3.4%
	Crude Fat 4.0%	3.2%
Big Blue Stock Feed	Crude Fat 4.0%	2.9%
Big Blue Stock Feed	Crude Protein 3.5%	2.9%
Wheat Mill Run with Screenings	Crude Protein 16.5%	15.5%
Coleman's Pig & Hog Feed	Crude Fat 4.0%	2.4%
	Crude Fat 4.0%	3.3%
	Crude Fat 4.0%	3.2%
Community Milling Co., Irvington, Kentucky		
Our Pride 32% Dairy Supplement	Crude Fat 3.0%	2.4%
Our Pride 20% Dairy Feed	Crude Fat 2.5%	1.9%
Our Pride 20% Dairy Feed	Crude Fat 2.5%	1.9%
Our Pride 16% Dairy Feed	Crude Fat 2.5%	1.9%
Our Pride 18% Pig & Sow Feed	Crude Fat 3.0%	2.3%
Our Pride 18% Pig & Sow Feed	Crude Protein 18.0%	16.8%
Scratch Feed		Unground weed seeds
Scratch Feed		Unground weed seeds
Cooperative Mills Inc., Cincinnati, Ohio		
40% Poultry Supplement	Phosphorus 2.5%	1.6%
40% Poultry Supplement	Phosphorus 2.5%	1.6%
40% Poultry Supplement	Phosphorus 2.5%	1.5%
40% Poultry Supplement	Phosphorus 2.5%	1.6%
Starting & Growing Mash Medicated (TR)	Bithinal 0.05%	0.039%
Starting & Growing Mash Medicated (TR)	Bithinal 0.05%	0.039%
Starting & Growing Mash Medicated (TR)	Bithinal 0.05%	0.032%
Egg Producer	Crude Protein 20.0%	19.1%

TABLE 2 SAMPLES CLASSIFIED AS "NOT PASSED"

MANUFACTURER, ADDRESS AND BRAND	GUARANTEED	FOUND
Cooperative Mills Inc., Cincinnati, Ohio (Cont'd.)		
Turkey Pre-Starter Medicated	Furazolidone 0.011%	0.0093%
Turkey Developer (4N) Medicated	4 Nitro Acid 0.025%	0.0404%
Pro-Blend 50	Salt 4.0%	6.7%
Pro-Blend 50	Crude Protein 50.0%	49.2%
32% Milk Maker	Crude Protein 32.0%	30.2%
Pig Starter Medicated	Arsanilic Acid 0.01%	0.006%
38% Sow & Pig Supplement Medicated	Arsanilic Acid 0.044%	0.02%
38% Sow & Pig Supplement Medicated	Arsanilic Acid 0.044%	0.0097%
Rabbit Maker Medicated	Furazolidone 0.0055%	0.0031%
Crescent Roller Mills, Taylorsville, Kentucky		
Crescent Stock Feed	Crude Protein 14.0%	13.0%
Crestwood Farmers Supply Center, Crestwood, Ky.		
Crestwood 36% Hog Balancer Medicated	Arsanilic Acid 0.0125%	0.0056%
Custom Feed Mills, Morganfield, Kentucky		
CM 50 125 Mixing Concentrate	Arsanilic Acid 0.05%	0.027%
Dearborn Mills, Aurora, Indiana		
Dearborn Dog Food	Crude Protein 26.0%	24.6%
Dearborn Dog Food	Crude Protein 26.0%	23.2%
Decatur Cotton Oil Company, Decatur, Alabama		
41% Cottonseed Meal	Crude Fiber 13.0%	13.9%
Deep Run Packing Company, Dublin, Pennsylvania		
Big Bet Cat Food	Crude Fat 2.0%	1.0%
Big Bet Cat Food	Crude Protein 10.0%	8.8%
	Crude Fat 2.0%	0.5%
Big Bet Cat Food	Crude Protein 10.0%	8.3%
	Crude Fat 2.0%	0.5%
Dixie Treat Sales Co., Jackson, Tennessee		
Dixie Treat 16% Dairy		Unground weed seeds
Doggie Dinner, Div. S. E. Mighton Co., Bedford, O.		
Doggie Dinner Dog Food	Crude Fat 2.0%	0.6%
The Early & Daniel Co., Cincinnati, Ohio		
Tuxedo Starter & Developer Mash Bitty Bits Med.	Nitrofurazone 0.0055%	0.0028%
Tuxedo Starter & Developer Mash Bitty Bits Med.	Nitrofurazone 0.0055%	0.0032%
Tuxedo Starter & Developer Mash Bitty Bits Med.	Nitrofurazone 0.0055%	0.0031%
Tuxedo Starter & Developer Mash Bitty Bits Med.	Nitrofurazone 0.0055%	0.0031%
Tuxedo Chick Starter Medicated	3-Nitro-4 0.005%	0.0022%
Tuxedo Turkey Grower & Developer Medicated	Crude Protein 22.0%	20.5%
Tuxedo Eggmash	Crude Fat 5.0%	4.3%
Tuxedo Eggmash	Crude Fat 5.0%	4.3%
Tuxedo Eggmash	Crude Fat 5.0%	3.8%
Tuxedo 44% Dairy Supplement	Crude Protein 44.0%	43.1%
Tuxedo 44% Dairy Supplement	Crude Protein 44.0%	40.7%
Tuxedo 33% Dairy Supplement	Crude Protein 33.0%	32.0%
Tuxedo 24% Coarse Dairy	Crude Protein 24.0%	23.4%
Tuxedo 24% Coarse Dairy	Crude Protein 24.0%	22.2%
Tuxedo 24% Coarse Dairy	Crude Protein 24.0%	21.1%
Tuxedo 24% Coarse Dairy	Crude Protein 24.0%	20.1%
Tuxedo 20% Coarse Dairy	Crude Protein 20.0%	17.9%
Tuxedo 32% Big A Steer Supplement	Crude Protein 32.0%	29.5%
Tuxedo 32% Big A Steer Supplement	Crude Protein 32.0%	30.5%
Tuxedo Big Pig Starter	Crude Protein 18.0%	16.8%
Tuxedo All Beef Dog Food	Crude Protein 14.0%	11.1%
	Crude Fat 6.0%	22.0%
Tuxedo Wheat Shorts with Ground Wheat Screenings	Crude Fiber 6.0%	7.6%

TABLE 2 SAMPLES CLASSIFIED AS "NOT PASSED"

MANUFACTURER, ADDRESS AND BRAND	GUARANTEED	FOUND
John W. Eshelman & Son, Lancaster, Pa. Red Rose Cage Layer Ration	Crude Fiber 5.0%	5.6%
Red Rose Worming Pellets	Crude Fat 4.0%	3.7%
Eshelman Grain Inc., Columbus, Ohio 52% Hi-Pro Cattle Supplement	Crude Protein 52.0%	49.5%
Life Guard Hog Supplement	Crude Fat 2.5%	1.4%
Ewing Mill Company, Brownstown, Indiana Triple-R-Dog Food	Crude Protein 11.0%	9.7%
	Crude Fat 2.0%	0.8%
	Crude Protein 25.0%	23.8%
Triple-R-Dog Food (Meal & Pellets) Ewing Mill Company, Ewing, Indiana Triple-R-Dog Food	Crude Protein 11.0%	8.8%
Fabro Inc., Athens, Georgia Henny Pen Dog Food	Crude Protein 11.0%	9.8%
	Crude Fat 2.0%	0.9%
Henny Pen Dog Food	Crude Protein 11.0%	8.9%
	Crude Fat 2.0%	1.0%
Henny Pen Dog Food	Crude Protein 11.0%	8.9%
	Crude Fat 2.0%	0.7%
Henny Pen Dog Food	Crude Protein 11.0%	8.8%
	Crude Fat 2.0%	0.7%
Famous Feed Mills, Nashville, Tennessee Uncle Dan 18% Dairy Feed	Crude Protein 18.0%	16.9%
Golden Gain 40% Hog Supplement	Crude Protein 40.0%	37.6%
Famous Calf Fitting Feed	Crude Protein 15.0%	10.5%
Famous Calf Fitting Feed	Crude Protein 15.0%	12.2%
41% Cottonseed Meal	Crude Protein 41.0%	40.2%
	Crude Fiber 14.0%	16.4%
Farmers Elevators, Inc., Owensboro, Kentucky Feeders Friend Chick Grower Medicated	Arsanilic Acid 0.01%	0.0%
Feeders Friend 35% Hog Balancer	Crude Fat 5.0%	2.6%
Feeders Friend 35% Hog Balancer	Crude Fat 5.0%	2.5%
Feeders Friend 16% Complete Layer Medicated	Crude Fat 5.0%	3.6%
Feeders Friend 30% Hi-Lass Supplement A	Crude Fat 3.0%	1.9%
Feeders Friend 30% Hi-Lass Supplement A	Crude Fiber 8.0%	8.7%
	Phosphorus 2.5%	0.5%
Farmers Milling Co., Somerset, Kentucky Farmers 20% Mixed Feed	Crude Protein 20.0%	19.2%
Farmers 20% Mixed Feed		Unground weed seeds
Farmers Scratch Feed		Unground weed seeds
Farmers Scratch Feed		Unground weed seeds
Farmers Scratch Feed		Unground weed seeds
Farmers Hog Feed	Crude Fiber 8.0%	9.1%
Farmers XXX Stock Feed	Crude Protein 12.5%	11.6%
Farmers Supply & Produce Co., Monticello, Ky. Ground Barley	Crude Protein 12.0%	9.8%
Farmers Supply Company, Beaver Dam, Kentucky Farmers Supply 35% Hog Supplement Medicated	Calcium 4.5%	3.5%
J. H. Fedders Inc., Covington, Kentucky Fedco Horse Feed	Crude Protein 10.0%	9.3%
Ferncliff Feed & Grain Co., Louisville, Kentucky Ferncliff 24% Dairy Feed	Crude Protein 24.0%	22.9%
Field Packing Co., Owensboro, Kentucky Field's 60% Digester Tankage	Crude Protein 60.0%	58.7%
Fischer Packing Company, Louisville, Kentucky Kentucky 60% Digester Tankage	Crude Protein 60.0%	59.0%

TABLE 2 SAMPLES CLASSIFIED AS "NOT PASSED"

MANUFACTURER, ADDRESS AND BRAND	GUARANTEED	FOUND
Flambeau Milling Company, Phillips, Wisconsin		
Flambo Pulverized White Oats & Mixed Screenings	Crude Fat 4.5%	3.2%
Flambo Pulverized White Oats & Mixed Screenings	Crude Fat 4.5%	3.3%
Flambo Pulverized White Oats & Mixed Screenings	Crude Fat 4.5%	3.6%
Pulverized Feed Barley & Mixed Screenings	Crude Protein 11.0%	9.7%
	Crude Fiber 15.0%	16.2%
Food Products Co. of America, Chicago, Illinois		
Dog House Dog & Cat Food	Crude Fat 2.0%	1.3%
Francis Wholesale Co., Prestonsburg, Kentucky		
Francis 24% Dairy Feed	Crude Protein 24.0%	23.3%
	Crude Fat 2.5%	1.8%
French Sardine Co., Terminal Island, California		
9-Lives Cat Food	Crude Fat 2.0%	0.9%
Frosty Morn Meats, Clarksville, Tennessee		
50% Meat & Bone Meal	Crude Protein 50.0%	47.0%
Henry Fruechtenicht Co., Inc., Louisville, Kentucky		
Producer 44% Dairy Concentrate	N. P. N. (Urea) 18.34%	21.0%
Producer 24% Dairy Feed	Crude Protein 24.0%	23.0%
Producer 16% Special Dairy Feed	N. P. N. (Urea) 5.24%	7.9%
Producer 16% Special Dairy Feed	Crude Fat 2.5%	1.9%
Producer Calf Grower	Crude Fiber 8.0%	8.7%
Producer 18% Pig & Sow Feed Medicated	Arsanilic Acid 0.01%	0.0016%
Producer 18% Pig & Sow Feed Medicated	Arsanilic Acid 0.01%	0.0015%
Producer 18% Pig & Sow Feed Medicated	Arsanilic Acid 0.01%	0.002%
Producer Pig Grower Medicated	Arsanilic Acid 0.01%	0.0019%
Producer Pig Grower Medicated	Arsanilic Acid 0.01%	0.0068%
Fuhrer-Ford Milling Co., Mt. Vernon, Indiana		
Wheat Bran	Crude Fat 3.5%	2.9%
Wheat Bran	Crude Fat 3.5%	2.7%
Wheat Bran	Crude Fat 3.5%	2.5%
Wheat Bran	Crude Fat 3.5%	2.9%
Wheat Bran	Crude Fat 3.5%	2.5%
Garrard Mills, Lancaster, Kentucky		
Big G Horse & Mule Feed	Crude Protein 10.0%	9.1%
General Mills, Inc., Minneapolis, Minnesota		
Larro Surepork Super 40	Calcium 4.5%	3.8%
General Packing Company, Waynesville, Ohio		
Your Pal Dog Food	Crude Protein 10.0%	8.5%
Germantown Milling Co., Germantown, Kentucky		
Mixed Feed	Crude Protein 14.0%	13.1%
Gilster Milling Co., Chester, Illinois		
Gilster's Wheat Bran	Crude Fat 3.5%	2.3%
Gilster's Wheat Bran	Crude Fat 3.75%	2.3%
Gilster's Wheat Bran	Crude Fat 3.75%	2.6%
Goldenrod Oil Meal Sales Co., Memphis, Tenn.		
Goldenrod 41% Cottonseed Meal	Crude Protein 41.0%	39.6%
Gwinn Bros. & Company, Huntington, W. Va.		
Merit Starter & Grower Medicated	Medicants 0.0063%	0.0028%
Merit Starter & Grower Medicated	Medicants 0.0063%	0.0031%
Merit Starter & Grower Medicated	Medicants 0.0063%	0.0044%
	Crude Fiber 5.0%	5.8%
Gwinn's Dairy Crunch 24%	Crude Protein 24.0%	21.8%
Hominy Feed	Crude Fiber 5.68%	6.4%
Hales & Hunter Co., Chicago, Illinois		
Pioneer Hog Balancer	Crude Fiber 6.0%	6.6%
Big-R-Buy Hog Balancer	Crude Fat 2.5%	1.9%
Pioneer Pig Gro-Pel H Medicated	Arsanilic Acid 0.01%	0.0075%
Pioneer Pig Gro-Pel H Medicated	Arsanilic Acid 0.01%	0.005%
Pioneer Hog Balancer	Crude Protein 36.0%	34.6%
Pioneer Sow Balancer	Crude Protein 35.0%	33.2%

TABLE 2 SAMPLES CLASSIFIED AS "NOT PASSED"

MANUFACTURER, ADDRESS AND BRAND	GUARANTEED	FOUND
Hardin County Milling Co., Elizabethtown, Kentucky		
Emerson's 20% Chick Starter	Crude Protein 20.0%	18.4%
Emerson's 20% Egg Mash	Crude Protein 20.0%	18.7%
Harlan Farmers Supply Co., Harlan, Kentucky		
Turkey Developer Medicated	3-Nitro-4 0.005%	0.0011%
Turkey Developer Medicated	3-Nitro-4 0.005%	0.0026%
Harpeth Mills, Nashville, Tennessee		
Peerless 16% Dairy Feed		Rice hulls
Peerless 16% Dairy Feed	Crude Fat 3.0%	1.2%
	Crude Fiber 15.0%	16.4%
		Rice hulls
Peerless 16% Dairy Feed	Crude Fiber 15.0%	19.3%
		Rice hulls
Peerless 16% Dairy Feed	Crude Fiber 15.0%	16.0%
Peerless 16% Dairy Feed	Crude Fat 3.0%	1.1%
	Crude Fiber 15.0%	16.6%
The P. H. Harsha Milling Co., Portsmouth, Ohio		
Harsha's Dixie-Sweet 16% Dairy Feed	Crude Fat 3.0%	1.3%
Harsha's Dixie-Sweet 16% Dairy Feed	Crude Fat 3.0%	2.3%
Harvest Brand, Inc., Pittsburg, Kansas		
Stockade Protein	Crude Protein 39.0%	38.2%
G. M. Haycraft & Son, Leitchfield, Kentucky		
Haycraft's Scratch Feed		Unground weed seeds
Haydon Mill & Grain Co., Springfield, Kentucky		
Magic Super All Mash Laying Mash	Crude Protein 16.0%	14.1%
Heaven Hill Distilleries, Inc., Bardstown, Kentucky		
Corn Distillers Dried Grains	Crude Protein 26.0%	25.0%
Corn Distillers Dried Grains	Crude Fat 8.0%	7.0%
Burch Hester Feed Store, Hustonville, Kentucky		
Big Chief 14% Dairy Feed (To be used with high protein legume pasture, hay or ensilage)	Crude Protein 14.0%	12.7%
Dr. Heinz Co., Inc., Washington C. H., Ohio		
Heinz Nu Way 40% Hog Supplement	Crude Protein 40.0%	39.3%
Heinz Nu Way Special Pig & Sow Supplement	Crude Fat 2.5%	1.8%
Heinz Nu Way Pig & Sow Ration	Crude Fiber 7.0%	8.0%
Heinz Nu Way 22% Sweet Flo Mixing Feed	Crude Fiber 8.5%	9.4%
Hickman County Feed Mill, Clinton, Kentucky		
Standard 16% Dairy Feed	Crude Protein 16.0%	14.5%
Standard 16% Dairy Feed	Crude Fat 2.5%	1.9%
Standard 17% Pig & Sow Feed	Crude Fiber 6.0%	6.6%
Holmes & Randolph Feed Mill, Mayfield, Kentucky		
H & R 16% Dairy Feed	Crude Protein 16.0%	14.9%
Home Milling Co., Greenville, Kentucky		
Happy Home 24% Dairy Feed	Crude Protein 24.0%	20.7%
	Crude Fat 4.0%	2.8%
		Unground weed seeds
Happy Home 24% Dairy Feed	Crude Protein 24.0%	20.2%
Happy Home 24% Dairy Feed	Crude Protein 24.0%	22.0%
	Crude Fat 4.0%	2.5%
Happy Home 24% Dairy Feed	Crude Protein 24.0%	21.8%
	Crude Fat 4.0%	2.7%
Happy Home 16% Sweet Dairy Feed	Crude Fat 2.5%	1.8%
Happy Home 16% Sweet Dairy Feed	Crude Protein 16.0%	15.2%
	Crude Fat 2.5%	1.8%
Happy Home 16% Sweet Dairy Feed		Unground weed seeds
Happy Home 16% Sweet Dairy Feed	Crude Fat 2.5%	1.5%
		Unground weed seeds

TABLE 2 SAMPLES CLASSIFIED AS "NOT PASSED"

MANUFACTURER, ADDRESS AND BRAND	GUARANTEED	FOUND
Home Milling Co., Greenville, Kentucky (Cont'd.) Happy Home 16% Sweet Dairy Feed	Crude Fat 2.5% Crude Fiber 15.0% N.P.N. (Urea) 5.24%	1.5% 15.7% 7.5%
Farm-Wa Dairy Feed 16%	Crude Protein 16.0% Crude Fat 4.0%	15.1% 3.1%
Farm-Wa Dairy Feed 16%		Unground weed seeds
Farm-Wa Dairy Feed 16%	Crude Fat 4.0%	3.0%
Champion 40% Hog Supplement	Crude Protein 40.0%	39.4%
Champion 40% Hog Supplement	Crude Fat 3.0%	2.2%
Champion Pig Developer Medicated	Crude Protein 40.0%	36.9%
Champion Pig Developer Medicated	Crude Fiber 6.0%	8.6%
Happy Home Crushed Ear Corn & Shuck	Crude Fiber 6.0%	7.0%
Hopkinsville Milling Co., Hopkinsville, Kentucky	Crude Protein 7.5%	6.6%
Sunflower Pig Starter	Crude Fiber 6.0%	6.9%
Sunflower Pig Starter	Crude Fiber 6.0%	6.9%
Sunflower Pig Starter	Crude Fiber 6.0%	6.6%
Sunflower Pig Starter	Crude Fiber 6.0%	6.9%
Sunflower Pig Starter	Crude Fiber 6.0%	6.7%
Sunflower Pig Starter	Crude Fiber 6.0%	6.9%
Igleheart Brothers, Evansville, Indiana		
Wheat Bran	Crude Fat 3.5%	2.7%
Wheat Bran	Crude Fat 3.5%	2.2%
J. F. Imbs Milling Co., Belleville, Illinois		
Charm Wheat Mixed Feed	Crude Fat 4.0%	3.2%
Charm Wheat Bran	Crude Fat 3.75%	2.9%
Independent Oil Mill Co., Jackson, Tennessee		
Independent 41% Cottonseed Meal	Crude Protein 41.0%	40.1%
Interstate Foods of America, Bedford, Ohio		
New ABC 3 Flavors Dog Food	Crude Fat 2.0%	1.46%
Jet Products Inc., Columbus, Mississippi		
Bonus Dog & Cat Food	Crude Protein 8.0%	7.1%
Keller Hay & Grain Co., Newport, Kentucky		
Big K Pig & Sow Ration	Crude Fat 6.0%	7.1%
Big K Pig & Sow Ration	Crude Fat 6.0%	7.2%
Big K Pig & Sow Ration	Crude Fat 6.0%	7.4%
Spencer Kellogg & Sons Inc., Kansas City, Mo.		
Professional Milk Check 16% Dairy	Crude Fat 3.0%	2.3%
Professional Milk Check 16% Dairy	Crude Protein 16.0%	14.9%
Professional Pro-Lass Hog Supplement	Salt 1.0%	2.6%
Professional Pig Mama (Pig & Sow Feed) Med.	3-Nitro-4 0.005%	0.003%
Professional Pig Mama (Pig & Sow Feed) Med.	3-Nitro-4 0.005%	0.0037%
Professional Pig Mama (Pig & Sow Feed) Med.	3-Nitro-4 0.005%	0.0028%
Professional Pig Mama (Pig & Sow Feed) Med.	Crude Protein 20.0%	17.3%
Kentucky By-Products Corp., Louisville, Kentucky		
Dri-Molass	Crude Protein 10.0%	9.4%
Dri-Molass	Sugar 40.0%	37.3%
Dri-Molass	Sugar 40.0%	38.7%
Dri-Molass	Sugar 40.0%	35.6%
Dri-Molass	Sugar 40.0%	36.3%
Dri-Molass	Sugar 40.0%	37.3%
Dri-Molass	Sugar 40.0%	38.8%
24% Brewers Dried Grains	Crude Protein 24.0%	23.4%
24% Brewers Dried Grains	Crude Fat 6.0%	4.6%
24% Brewers Dried Grains	Crude Fat 6.0%	4.8%

TABLE 2 SAMPLES CLASSIFIED AS "NOT PASSED"

MANUFACTURER, ADDRESS AND BRAND	GUARANTEED	FOUND
Kentucky Chemical Industries Inc., Cincinnati, Ohio		
50% Meat & Bone Scraps	Crude Protein 50.0%	48.7%
60% Digester Tankage	Crude Protein 60.0%	57.6%
60% Digester Tankage	Crude Protein 60.0%	56.8%
Keynes Brothers, Logan, Ohio		
Mayflower 24% Dairy Feed	Crude Fat 2.5%	1.8%
Check Mark 24% Dairy Feed	Crude Protein 24.0%	20.3%
Logan 24% Dairy Feed	Crude Protein 24.0%	22.8%
Logan 24% Dairy Feed	Crude Fat 2.5%	1.9%
Logan 16% Dairy Feed	Crude Protein 16.0%	15.0%
Logan 16% Dairy Feed		Mixed
Logan 16% Dairy Feed	Crude Protein 16.0%	Screenings
Check Mark Cracked Corn	Crude Protein 9.0%	14.9%
The Klarer Company, Louisville, Kentucky		7.4%
Klarer 60% Digester Tankage	Crude Protein 60.0%	56.9%
Knifley Feed & Supply Company, Elkhorn, Kentucky		
Elk Brand 16% Dairy - Yellow Tag	Crude Protein 16.0%	14.5%
Elk Brand Hominy Feed	Crude Fiber 6.0%	6.9%
Lake County Oil Mill, Tiptonville, Tennessee		
Solvent Extracted 41% Protein Cottonseed Meal	Crude Protein 41.0%	38.6%
	Crude Fiber 14.0%	14.6%
	Crude Fiber 14.0%	15.0%
Solvent Extracted 41% Protein Cottonseed Meal		
Lauhoff Grain Company, Danville, Illinois		
Vermillion Hominy Feed	Crude Fat 5.0%	4.1%
Lewisburg Roller Mills, Lewisburg, Kentucky		
Economy 16% Dairy Feed	Crude Protein 16.0%	14.5%
Pay Master 40% Hog Supplement	Crude Protein 40.0%	38.1%
Lexington Roller Mills, Lexington, Kentucky		
Thoroughbred Starter & Grower 20%	Crude Fiber 6.0%	7.0%
Life Guard Feeds, Columbus, Ohio		
Life Guard 42% Broiler Concentrate Medicated	Crude Protein 42.0%	40.8%
L. B. Lovitt Company, Memphis, Tennessee		
Lovit 41% Cottonseed Meal	Crude Protein 41.0%	40.3%
Lowe's Feed and Hatchery, Bowling Green, Ky.		
Milk Flo 16%	Crude Protein 16.0%	14.9%
Milk Flo 16%	Crude Protein 16.0%	15.2%
Milk Flo 16%	Crude Protein 16.0%	14.8%
Lowe's Sweet Mix Feed	Crude Protein 12.5%	10.9%
Lowe's Sweet Mix Feed	Crude Protein 12.5%	11.1%
Lowe's Sweet Mix Feed	Crude Protein 12.5%	11.6%
Major-Burres Seed Co., Wilkerson, Indiana		
Feeders Choice Mineral Compound	Phosphorus 4.0%	2.8%
Marhoefer Packing Co., Inc., Muncie, Indiana		
Marhoefer's 60% Tankage	Crude Protein 60.0%	57.8%
Markin Feed Company, Ironton, Ohio		
Markin 16% Milk Maker	Crude Fiber 15.0%	18.6%
Marnat Packing Company, Bennettsville, S. C.		
Big Time Dog Food	Crude Protein 15.0%	14.4%
Mayfield Milling Company, Mayfield, Kentucky		
Double M Broiler Starter Medicated	Crude Protein 23.0%	21.6%
	Crude Fiber 2.5%	3.8%
	Crude Protein 40.0%	39.4%
	Crude Fat 4.0%	3.4%
40% Hog Supplement		
Double M C cracked Corn		
McCauley Bros. Seed Company, Versailles, Ky.		
McCauley's 16% Dairy	Crude Protein 16.0%	14.9%
McCauley's 16% Dairy	Crude Protein 16.0%	14.5%
Sheep Feed	Crude Fat 2.5%	1.8%
Sheep Feed	Crude Fat 2.5%	1.9%

TABLE 2 SAMPLES CLASSIFIED AS "NOT PASSED"

MANUFACTURER, ADDRESS AND BRAND	GUARANTEED	FOUND
McCauley Bros. Seed Co., (Cont'd.) Ground Barley	Crude Fiber 6.0%	7.4% Unground weed seeds
J. E. McGahan Company, Paintsville, Kentucky Corn & Cob Meal	Crude Protein 8.7%	7.9%
	Crude Fiber 5.8%	6.6%
	Crude Fiber 5.8%	6.9%
Corn & Cob Meal		
McKnight-Keaton Grocery Co., Sikeston, Missouri Radio 40% Hog Pellets	Crude Fat 3.0%	1.6%
Radio Chick Starter Medicated	Medicants 0.0063%	0.0044%
McMillen Feed Mills, Fort Wayne, Indiana Master Mix Pullet Grower	Crude Fiber 3.5%	5.8%
Master Mix Hi-Calorie Breeder Concentrate	Calcium 4.1%	3.4%
Master Mix 50% Dairy Concentrate	Crude Protein 50.0%	49.1%
Master Mix Sweet 16% Dairy	Crude Fat 2.5%	1.9%
Master Mix 32% Cattle Mixer	Crude Fiber 13.0%	13.6%
Master Mix 40% Hog Concentrate	Crude Protein 40.0%	39.2%
Master Mix 40% Hog Concentrate	Crude Protein 40.0%	38.8%
Master Mix Pig-ets Medicated	Arsanilic Acid 0.01%	0.0086%
Master Mix Sweet Flakes	Crude Fiber 25.0%	28.5%
Master Mix Sweet Flakes	Crude Fiber 29.0%	29.6%
Master Mix Sweet Flakes	Crude Fiber 29.0%	30.8%
Master Mix Hound Pack Dog Food	Crude Protein 22.0%	20.2%
Meadows Feed & Building Supply, Clay City, Ky. Meadow's Check-R-Mix 16% Dairy Feed	N. P. N. (Urea) 3.0%	6.2%
Metzger Bros., Paducah, Kentucky 43% Tankage with Bone	Crude Fiber 2.0%	2.7%
Middlesboro Milling Co., Middlesboro, Kentucky Hard-to-Beat Feed	Crude Protein 13.0%	12.1%
Premium Scratch Feed		Unground weed seeds
Midget Mills, Somerset, Kentucky White Rose 24% Dairy Feed	Crude Fat 3.0%	2.4%
White Rose 24% Dairy Feed	Crude Fat 3.0%	2.2%
	Crude Protein 24.0%	22.8%
White Rose 24% Dairy Feed	Crude Protein 24.0%	21.9%
	Crude Fat 3.0%	2.2%
13% Stock Feed		Unground weed seeds
S. E. Mighton Co., Bedford, Ohio Doggie Dinner Dog Food	Crude Fat 2.0%	1.2%
Carlyle Miller, Bowling Green, Kentucky Lespedeza Meal	Crude Fiber 28.0%	34.0%
Miller Milling Service, Bowling Green, Kentucky Lespedeza Meal	Crude Fiber 28.0%	31.8%
Milliken Sweet Feed Mill, Franklin, Kentucky Milliken's 36% Hog Concentrate	Crude Fat 13.5%	12.5%
Milliken's 36% Hog Concentrate	Crude Fat 13.5%	11.3%
Milliken 36% H. E. Hog Supplement Medicated	Arsanilic Acid 0.02%	0.0023%
Mineral Products Co., Indianapolis, Indiana 3-Way All Purpose Mineral	Salt 11.0%	17.5%
Mohawk Roller Mills, Mohawk, Tennessee Mohawk Scratch Feed		Unground weed seeds
Murphy Grain & Milling Co., Owensboro, Ky. Aiolite Hominy Feed	Crude Fat 6.0%	4.6%
Myers & Clark Milling Co., Ashland, Kentucky Ideal 24% Dairy Feed	N. P. N. (Urea) 5.9%	8.2%

TABLE 2 SAMPLES CLASSIFIED AS "NOT PASSED"

MANUFACTURER, ADDRESS AND BRAND	GUARANTEED	FOUND
Nashville Cotton Oil Mill Corp., Nashville, Tenn. Nasco Super Swine Concentrate	Crude Fiber 8.0%	8.6%
Neuhoff Packing Co., Nashville, Tennessee Neuhoff's 60% Tankage	Crude Fat 8.0%	5.5%
Neuhoff's 60% Tankage	Crude Fat 8.0%	7.3%
Neuhoff's 60% Tankage	Crude Fat 8.0%	6.3%
	Crude Protein 60.0%	58.8%
Neumond, Inc., St. Louis, Missouri Neumond's 13% Sure Cured Alfalfa Meal	Crude Fiber 33.0%	34.9%
Chas. Nunn & Sons Milling Co., Evansville, Ind. Nunn Better 17% All Mash	Crude Protein 17.0%	16.2%
Nunn Better Dog Food	Crude Protein 10.0%	8.9%
Ohio Valley Soybean Cooperative, Henderson, Ky. Cardinal 44% Soybean Oil Meal	Crude Fiber 7.0%	7.8%
Cardinal Finishing Fare Hog Supplement	Crude Protein 40.0%	38.1%
Cardinal 13% Market Topper Complete Hog Feed	Crude Protein 13.0%	12.4%
Orleans Dog Candy Co., Chicago, Illinois Lolli-Pups	Crude Fat 2.5%	1.6%
Owensboro Grain Co., Owensboro, Kentucky Ograco 44% Soybean Meal	Crude Fiber 7.0%	7.8%
Ograco 44% Soybean Meal	Crude Fiber 7.0%	8.5%
Ograco 44% Soybean Meal	Crude Fiber 7.0%	7.6%
Ograco 44% Soybean Meal	Crude Protein 44.0%	41.4%
Ograco 44% Soybean Meal	Crude Fiber 7.0%	9.9%
Owensboro Milling Company, Owensboro, Ky. TruTesT 40% Hog Supplement	Crude Protein 40.0%	38.9%
TruTesT 40% Hog Supplement	Crude Protein 40.0%	39.4%
TruTesT Pig & Sow Concentrate	Crude Fiber 9.0%	9.6%
TruTesT 18% Pig & Sow Feed	Crude Fat 3.0%	2.3%
Pan American Mills, Bowling Green, Kentucky Booster 40% Hog Supplement	Crude Fiber 7.0%	8.3%
Green Valley 35% Hog Supplement	Crude Fiber 7.0%	8.5%
18% Booster Pig Starter	Crude Fat 4.0%	3.2%
Perk Dog Food Co., Chicago, Illinois Peak Horsemeat with Fresh Bone Dog Food	Crude Protein 15.0%	14.4%
Pierce & Williams, Hopkinsville, Kentucky Check-R-Mix Hog Grower (SA) 3-N	3-Nitro-4 0.0055%	0.0043%
Check-R-Mix Hog Grower (SA) 3-N	3-Nitro-4 0.0055%	0.0026%
Pillsbury Mills, Minneapolis, Minnesota Pillsbury's Best Starter & Grower (FZ4) Med.	Medicants 0.0067%	0.0047%
Pillsbury's Best Starter & Grower (F1) Med.	Furazolidone 0.0011%	0.0005%
Pillsbury's Best Dairy Mixer 44	Salt 3.5%	5.43%
Pillsbury's Best Dairy Mixer 44	Crude Protein 44.0%	43.1%
Pillsbury's Best Dairy Mixer 44	Crude Protein 44.0%	42.0%
Pillsbury's Best Dairy Mixer 44	Crude Protein 44.0%	42.8%
Pillsbury's Best Dairy Mixer 44	Crude Protein 44.0%	43.3%
Pillsbury's Dutch Maid 16% Dairy Feed		Rice Hulls
Pillsbury's Dutch Maid 16% Dairy Feed		Rice Hulls
Pillsbury's Best Hog Concentrate	Crude Protein 40.0%	39.3%
Pillsbury's Best Hog Concentrate	Crude Protein 40.0%	39.2%
Pillsbury's Best Hog Concentrate	Crude Protein 40.0%	39.0%
Pillsbury's Best Hog Concentrate	Crude Protein 40.0%	39.2%
Pillsbury's XX Daisy	Crude Fiber 4.0%	4.7%
Pillsbury's Soft Wheat Bran	Crude Fiber 11.0%	11.7%
Ballard's Pure Wheat Bran	Crude Fat 3.5%	2.8%
Princeton Mills, Princeton, Kentucky Chow Mix Sow & Pig Feed	Crude Protein 16.0%	14.3%
Chow Mix Sow & Pig Feed	Crude Protein 16.0%	14.5%
Check-R-Mix Hog Feed E	Crude Protein 14.0%	13.0%

TABLE 2 SAMPLES CLASSIFIED AS "NOT PASSED"

MANUFACTURER, ADDRESS AND BRAND	GUARANTEED	FOUND
The Quaker Oats Company, Chicago, Illinois Ful-O-Pep Super Layer Concentrate L Ful-O-Pep Super Layer Concentrate L Ful-O-Pep Medicated Pig Bracery (D2K) L Mixed Screenings	Crude Protein 40.0%	37.7%
	Crude Protein 40.0%	39.0%
	Arsanilic Acid 0.01%	0.007%
	Crude Fiber 19.0%	19.6%
Ralston Purina Co., St. Louis, Missouri Purina Custom Broiler Finisher Chowder UN Med. Purina Layena Purina Cow Chow Concentrate K 50% Purina 40% Hog Chow Supplement K Purina 40% Hog Chow Supplement K Purina 40% Hog Chow Supplement Purina 40% Hog Chow Supplement Purina Hog Chow 3N Medicated Purina Hog Chow 3N Medicated Purina Hog Chow 3N Medicated Purina Pig Growena T Medicated	Crude Fat 8.0%	7.4%
	Crude Protein 16.0%	15.4%
	Calcium 4.0%	2.6%
	Crude Protein 40.0%	38.6%
	Crude Protein 40.0%	39.0%
	Crude Protein 40.0%	36.3%
	Crude Protein 40.0%	39.1%
	3-Nitro-4 0.025%	0.0126%
	3-Nitro-4 0.025%	0.0163%
	3-Nitro-4 0.025%	0.0184%
	Crude Protein 16.0%	14.6%
Reelfoot Alfalfa Mill, Tiptonville, Tennessee 17% Alfalfa Meal Dehydrated 17% Alfalfa Meal Dehydrated 17% Alfalfa Meal Dehydrated 17% Alfalfa Meal Dehydrated 17% Alfalfa Meal Dehydrated 17% Alfalfa Meal Dehydrated	Crude Fiber 27.0%	30.6%
	Crude Protein 17.0%	15.3%
	Crude Fiber 27.0%	29.9%
	Crude Protein 17.0%	15.2%
	Crude Protein 17.0%	15.1%
	Crude Fiber 27.0%	30.2%
	Crude Protein 17.0%	15.9%
	Crude Fiber 27.0%	31.6%
	Crude Protein 17.0%	16.4%
	Crude Fiber 27.0%	28.5%
	Rhodes Sweet Feed Mill, Mayfield, Kentucky Feeders Choice 16% Dairy Feed	Crude Fat 2.5%
Riteway Milling Co., Otway, Ohio Jim Dandy 16% Dairy Feed		Unground weed seeds
Jim Dandy 16% Dairy Feed	Crude Fat 2.5%	1.2%
	Crude Fiber 12.0%	13.0%
River Brand Rice Mills, Inc., Memphis, Tenn. Rice Bran	Crude Protein 12.0%	11.3%
	Calcium 2.0%	7.25%
Robbins Bros., Auburn, Kentucky Hominy Feed Hominy Feed Hominy Feed	Crude Fat 7.0%	6.2%
	Crude Fat 7.0%	5.7%
	Crude Protein 10.0%	8.7%
	Crude Protein 10.0%	9.3%
	Crude Fat 7.0%	6.1%
Robinson Milling Co., Inc., Somerset, Kentucky Sun-Ray 40% Booster Hog Supplement Medicated Sun-Ray 40% Booster Hog Supplement Medicated Sun-Ray 40% Booster Hog Supplement Medicated Happy Home 16% Sweet Dairy Feed Happy Home 16% Sweet Dairy Feed Happy Home 16% Sweet Dairy Feed Happy Home 16% Sweet Dairy Feed Happy Home 16% Sweet Dairy Feed Happy Home 16% Sweet Dairy Feed Happy Home 16% Sweet Dairy Feed	Arsanilic Acid 0.04%	0.021%
	Arsanilic Acid 0.04%	0.0%
	Arsanilic Acid 0.04%	0.003%
	Crude Protein 16.0%	13.7%
	Crude Fat 3.0%	2.4%
	Crude Protein 16.0%	12.5%
	Crude Fat 3.0%	1.9%
	Crude Fat 3.0%	2.2%
	Crude Fat 3.0%	1.9%
Ross Feed Company, Murray, Kentucky Standard Brand Poultry Mash Concentrate	Crude Protein 34.0%	32.6%
Russell-Miller Milling Co., Minneapolis, Minn. Occident Wheat Bran	Crude Fat 4.0%	3.2%
Russellville Feed Co., Russellville, Kentucky Burchett's 35% Pig & Sow Medicated	Arsanilic Acid 0.05%	0.01%

TABLE 2 SAMPLES CLASSIFIED AS "NOT PASSED"

MANUFACTURER, ADDRESS AND BRAND	GUARANTEED	FOUND
Russellville Feed Co., (Cont'd.)		
Burchetts 35% Poultry Concentrate Medicated	Arsanilic Acid 0.0375%	0.023%
Burchetts 14% Sweet Dairy Feed (To be used with high protein legume pasture, hay or ensilage)		Unground weed seeds
Burchetts 14% Sweet Dairy Feed (To be used with high protein legume pasture, hay or ensilage)		Unground weed seeds
Salyersville Wholesale Co., Salyersville, Ky.		
Quick Chick Starter-Grower Medicated	Crude Fiber 5.0%	5.8%
Quick Chick Starter-Grower Medicated	Medicants 0.0063%	0.0037%
Sandusky Bros., Harrodsburg, Kentucky		
Winner Scratch Feed		Unground weed seeds
Cracked Corn	Crude Protein 9.0%	8.2%
J. F. Schneider & Son, Middlesboro, Kentucky		
Cudjo 48% Tankage	Crude Protein 48.0%	46.0%
Chas. H. Schenk & Sons, Vincennes, Indiana		
Dehydrated Alfalfa	Crude Protein 17.0%	15.8%
	Crude Fiber 27.0%	28.4%
John Schlemmer, Harrison, Ohio		
Zippy Stride Dog Food	Crude Protein 27.0%	26.4%
Zippy Stride Dog Food	Crude Protein 27.0%	26.0%
Zippy Stride Dog Food	Crude Protein 27.0%	23.7%
The Scott County Milling Co., Sikeston, Missouri		
Gristo Chick Starter	Medicants 0.0063%	0.0043%
Gristo Economy Dairy 16%	Crude Fat 2.5%	1.9%
Gristo 40% Hog Pellets	Crude Fat 3.0%	1.9%
Gristo 40% Hog Pellets	Crude Fat 3.0%	1.6%
Gristo Pure Wheat Bran	Crude Fat 3.5%	2.7%
Security Mills, Inc., Knoxville, Tennessee		
Big S Dog Food	Crude Protein 22.0%	21.2%
J. Allen Smith & Co., Knoxville, Tennessee		
Peerless Feed	Crude Fat 3.5%	2.9%
Southern Cotton Oil, Memphis, Tennessee		
Sco-Co 41% Cottonseed Meal	Crude Protein 41.0%	40.2%
Southern Rendering Co., Shelbyville, Tennessee		
Southern 60% Mixture Meat & Bone Meal Hydrolyzed Poultry Feathers	Crude Protein 60.0%	56.7%
Southern 60% Mixture Meat & Bone Meal Hydrolyzed Poultry Feathers	Crude Protein 60.0%	58.5%
S. S. Hopkinsville Cooperative, Hopkinsville, Ky.		
Ground Barley	Crude Protein 12.0%	10.7%
Spen-Well Feed Co., Winchester, Kentucky		
Newco Feeds 24% Dairy	Crude Protein 24.0%	22.0%
Newco Lamb Fattener	Crude Protein 12.0%	11.2%
Newco Sheep Feed	Crude Fat 3.5%	2.7%
Newco Pig Grower	Crude Protein 14.0%	13.2%
Staley Milling Co., Decatur, Illinois		
Broiler Finisher Atoms Medicated	Nicarbazin 0.0125%	0.0093%
	3-Nitro-4 0.005%	0.0037%
Pro Lass Hog Supplement	Crude Protein 35.0%	34.1%
Standard Mills, Huntington, West Virginia		
Rainbow 24% Dairy Feed	Crude Protein 24.0%	22.4%
Rainbow 24% Dairy Feed	Crude Protein 24.0%	22.3%
Sturgis Milling Co., Sturgis, Kentucky		
Hoppy's 20% Pig & Sow Meal	Crude Fiber 6.0%	8.2%
Hoppy's 20% Pig & Sow Meal	Crude Fiber 6.0%	7.7%
Hoppy's 20% Pig & Sow Meal	Crude Fiber 6.0%	7.0%
Hoppy's 20% Pig & Sow Meal	Crude Fiber 6.0%	7.7%
Hoppy's 20% Pig & Sow Meal	Crude Fiber 6.0%	7.0%
Sun-Ray Feed Mills, Bowling Green, Kentucky		
Sun-Ray 24% Sweet Dairy Feed	Crude Protein 24.0%	22.5%

TABLE 2 SAMPLES CLASSIFIED AS "NOT PASSED"

MANUFACTURER, ADDRESS AND BRAND	GUARANTEED	FOUND
Supreme Mills, Glasgow, Kentucky		
Supreme 45% Dairy Concentrate	Crude Protein 45.0%	41.9%
Premo 24% Dairy Feed	Crude Protein 24.0%	22.7%
Premo 24% Dairy Feed	Crude Protein 24.0%	21.0%
Premo 24% Dairy Feed	Crude Protein 24.0%	21.9%
Premo 24% Dairy Feed	Crude Protein 24.0%	22.5%
Premo 24% Dairy Feed	Crude Protein 24.0%	22.2%
Supreme Special 16% Dairy Feed	Crude Fiber 10.0%	10.7%
Premo 20% Calf Developer Medicated	Crude Fat 3.0%	2.3%
Premo 40% Hog Supplement	Crude Protein 40.0%	39.4%
	Crude Fiber 7.0%	8.1%
Drummer Boy 40% Hog Supplement	Crude Protein 40.0%	37.5%
Premo Hominy Meal	Crude Fat 5.0%	4.1%
D. B. Sutherland & Sons, Bloomfield, Kentucky		
Kentucky Kernel Hominy Feed	Crude Fat 7.0%	5.0%
Kentucky Kernel Hominy Feed	Crude Fat 7.0%	5.9%
Sweet Feed Mills, Bowling Green, Kentucky		
Good Fresh Grains 16% Dairy Feed		Unground weed seeds
Swift & Co., Chicago, Illinois		
Digester Tankage 60%	Crude Protein 60.0%	58.2%
Tabor Hatchery & Building Supply, Columbia, Ky.		
Tabor Layer-Grower Concentrate	Crude Fat 3.0%	2.2%
The Thorobred Co., Inc., Cincinnati, Ohio		
Thorobred Dog Food	Crude Protein 10.5%	9.5%
	Crude Fat 2.5%	1.7%
Todd County Grain Co., Elkton, Kentucky		
Ground Milo	Crude Protein 11.0%	8.2%
Trenton Cotton Oil Co., Trenton, Tennessee		
Trenton 41% Cottonseed Meal	Crude Protein 41.0%	38.7%
Trenton 41% Cottonseed Meal	Crude Protein 41.0%	39.5%
Trenton 41% Cottonseed Meal	Crude Protein 41.0%	40.0%
Tri-State Mills, Kenova, West Virginia		
24% Daisy Dairy	Crude Protein 24.0%	23.0%
24% Daisy Dairy	Crude Protein 24.0%	23.2%
Vet's Div. of Perk Foods Co., Chicago, Illinois		
Vets Cat Food	Crude Fat 3.0%	2.4%
Weisenberger Mills, Midway, Kentucky		
Hominy Feed	Crude Fiber 6.0%	6.7%
Hominy Feed	Crude Fat 5.0%	4.3%
Martha White Mills of W. Va., Huntington, W. Va.		
Liberty 24% Dairy Feed	N. P. N. (Urea) 7.86%	10.4%
Reliable Scratch Grains		Unground weed seeds
Fortune Hen Scratch Feed		Unground weed seeds
The Whitewater Flour Mills, Inc., Whitewater, Kan.		
Wheat Shorts with Wheat Screenings	Crude Fiber 6.0%	6.7%
Williamstown Roller Mills, Williamstown, Kentucky		
Our Own 20% Egg Mash	Crude Fat 3.5%	2.9%
Our Own 16% Pig & Sow Meal	Crude Protein 16.0%	15.4%
Winchester Canning Co., Canal Winchester, Ohio		
Romp Dog Food	Crude Protein 10.0%	8.7%
Winn Milling Co., Greensburg, Kentucky		
Daisy 16% Dairy Feed (White Tag)	Crude Fat 2.5%	1.7%
	Crude Fiber 10.0%	14.4%
Daisy 16% Dairy Feed	Crude Fat 2.5%	1.7%
	Crude Fiber 15.0%	15.7%

TABLE 2 SAMPLES CLASSIFIED AS "NOT PASSED"

MANUFACTURER, ADDRESS AND BRAND	GUARANTEED	FOUND
Winn & Tobin Milling Co., Leitchfield, Kentucky Scratch Feed Scratch Feed	Crude Fat 3.0% Crude Fat 3.0%	2.3% 2.2%

4.5M--4-61